



Knight of Reckoning

Century High School
355 Ronsdale Road
Sykesville, MD 21784
Saturday, September 22nd, 2018



EVENT HOST CONTACTS

Jeremy Cooper
(301 471-2644
Jeremycooper2009@hotmail.com

Stan Jones
(410 386-4400
shjones@carrollk12.org

USBANDS CONTACTS

Mike Trehey
(484)-387-1136
mtrehey@usbands.org

Eric James
(484)-387-1142
ejames@usbands.org

**THIS PAGE WILL BE
COMPLETED BY
USBANDS**

**THIS PAGE WILL BE
COMPLETED BY
USBANDS**



IMPORTANT EVENT INFORMATION

Parking: Band bus parking is at the front of the school on the north side of the school. There is easy access from the High School and stadium. Please see the map to know where they will be parked. Pit/Equipment truck parking will be on the side of the school closest to the field entrance located on the east side of the school. This lot is for Equipment Trucks only as space is limited. Please encourage your band parent volunteers to park in the spectator lot as they won't be granted access to the lot with the trucks.

Restrooms: Restrooms will be available for your students to use upon arrival. We will have spot-a-pots located in the pit parking area and full restrooms inside the stadium.

Member Re-Entry: Students with a hand stamp can access the stadium restrooms at any time. We will not have access to the school itself, per CCPS regulations.

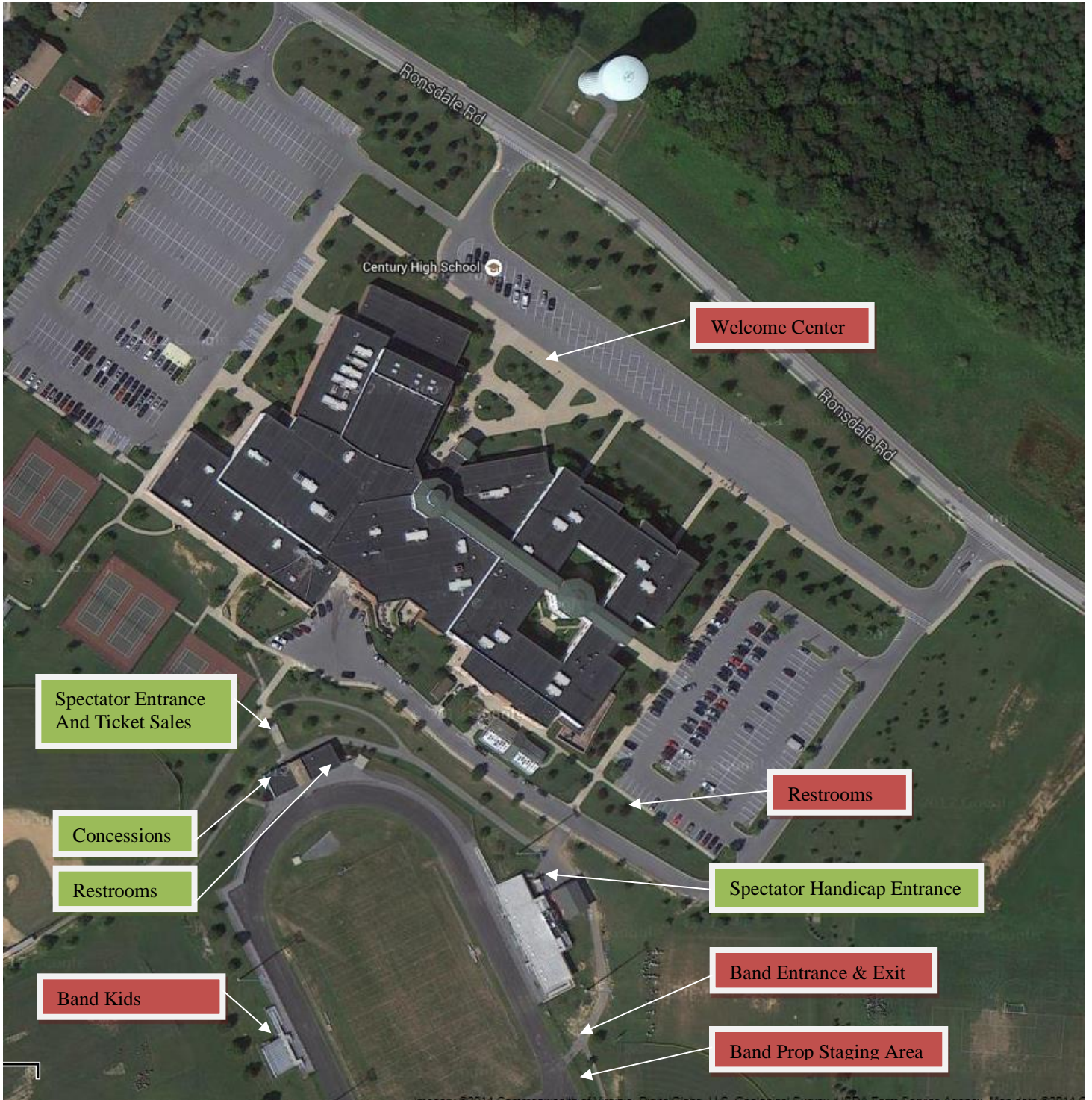
Warm Up: See the attached maps for the warm-up areas. These will be assigned by CHS personnel at check-in. Please note that some of the warm-up areas are a distance from the field. Please plan ahead for travel time.

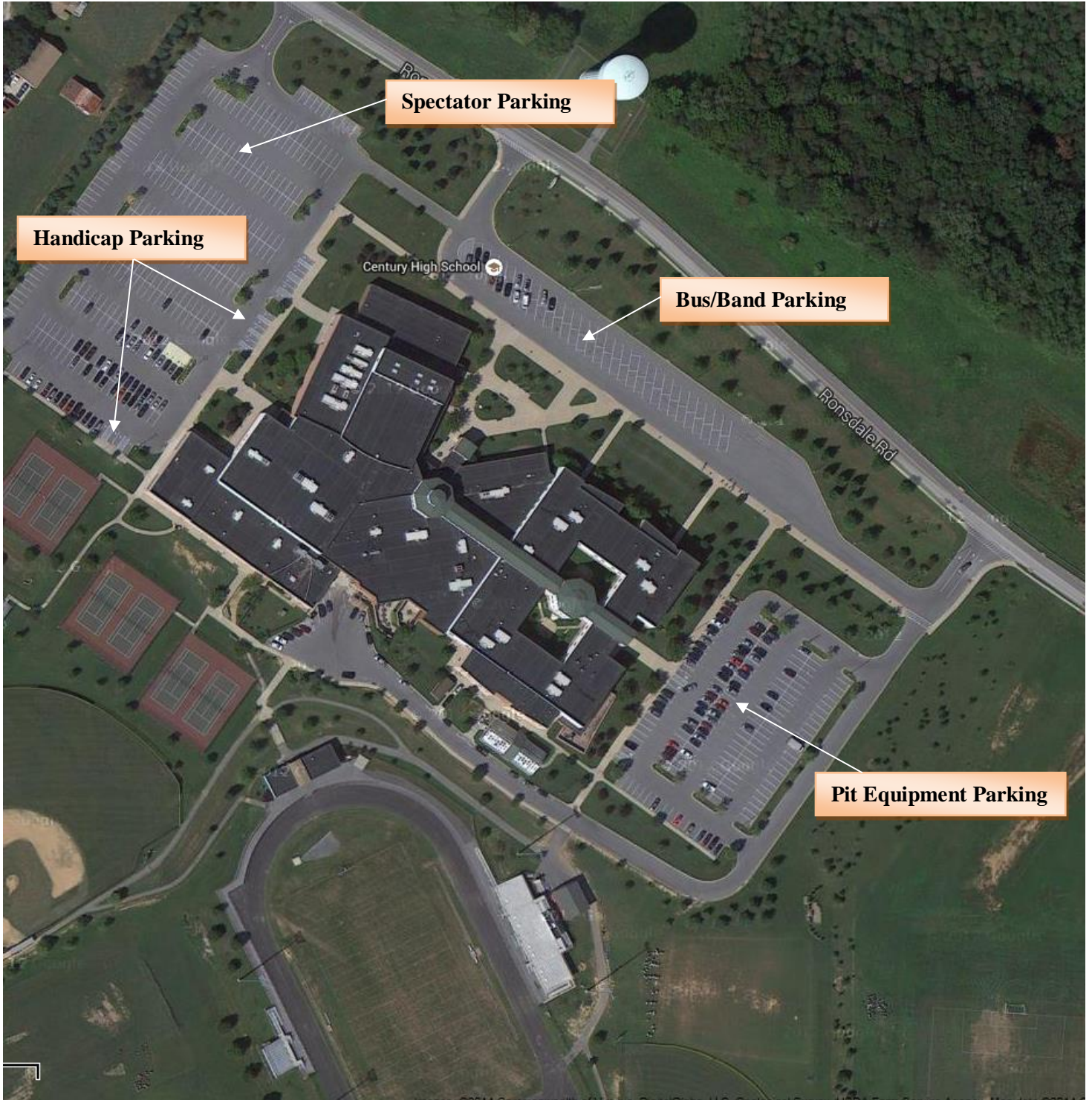
Field Surface: Grass field. High School hashes are painted

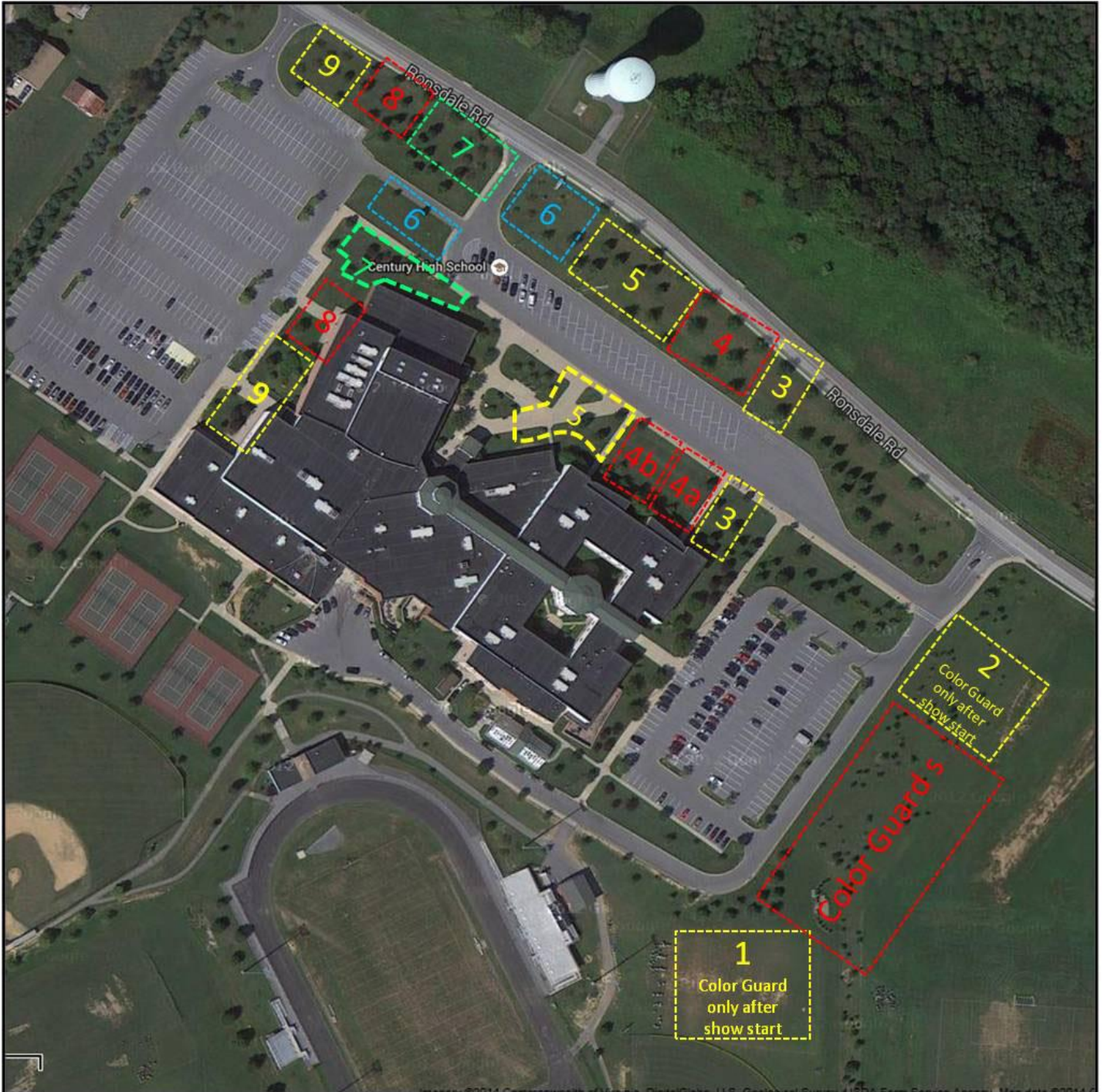
Competition Suite: Adjudicator commentary for all USBands ensembles can be located in Competition Suite shortly after the conclusion of each ensemble's performance. Directors may grant access to the ensemble's portal with staff/instructors, and may request help from USBands representatives to resolve any issues accessing Competition Suite.

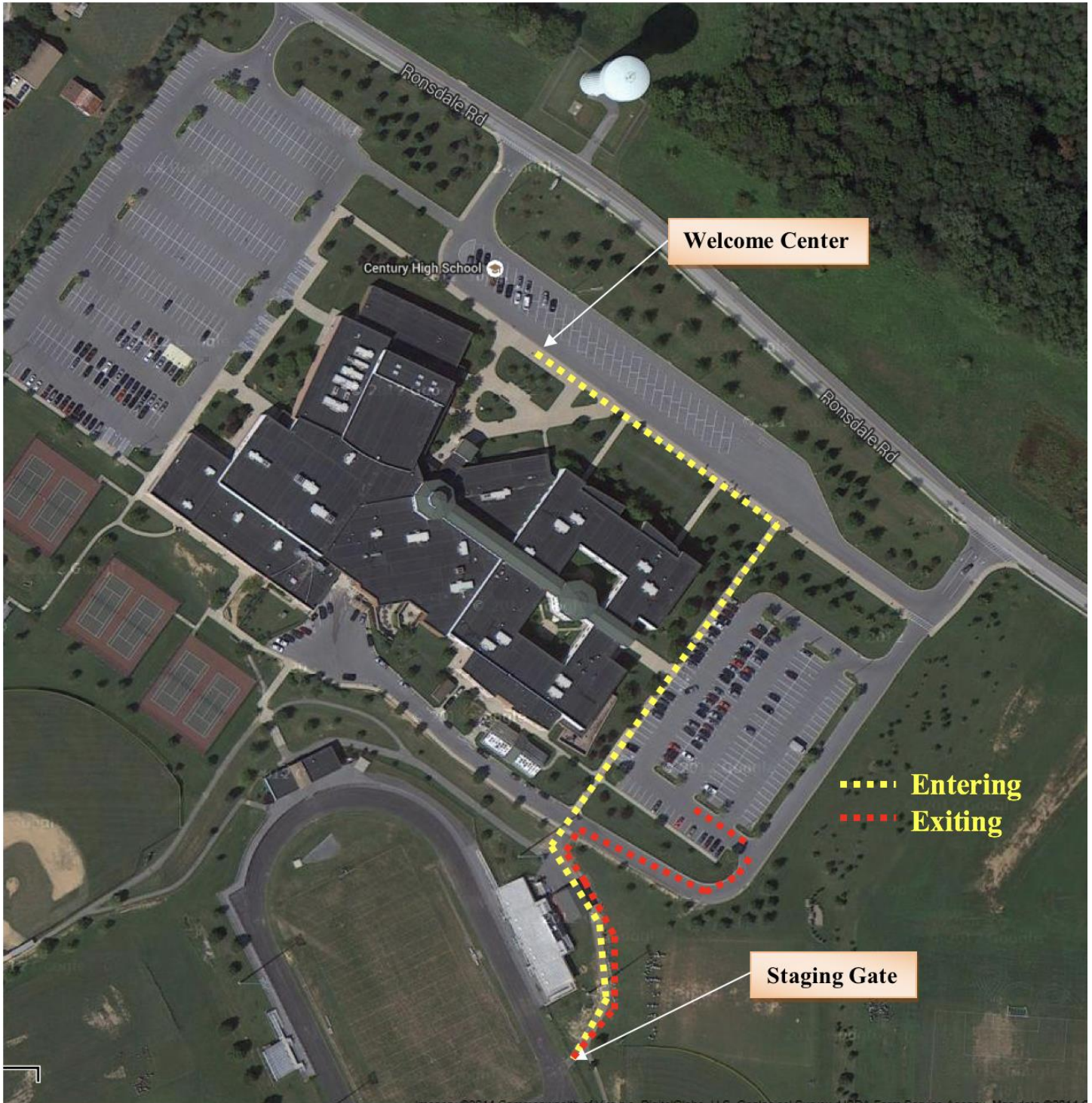
Retreat/Critique: Designated band representative's retreat. Critique will be in the school cafeteria.

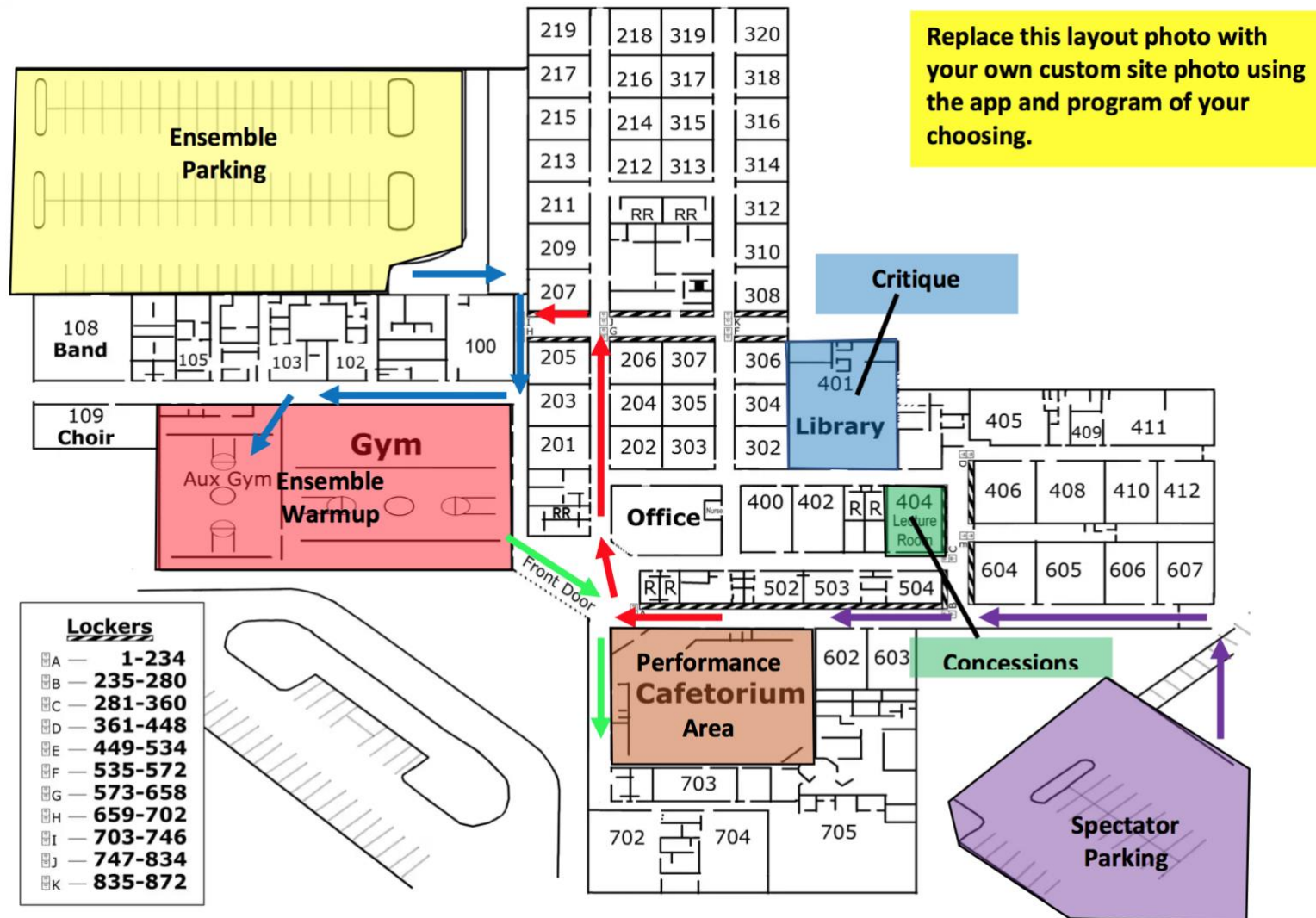
Souvenirs/Concessions: Concessions, air grams, candy grams, baked goods and other items for sale will be located on the west end of the stadium, on the right side as you enter the stadium.











Arrival: Should buses/trucks enter from a certain street/road? Are there any obstacles vehicles should avoid on arrival? (low clearance bridge, narrow streets, dead ends)

Parking: Where will buses/spectators park? Is there a fee to park? If so, how much?

Restrooms: Are restrooms available for ensembles? If so, where?

Member Re-entry: How will ensembles re-enter the venue after performing?

Warm-up: Where will ensembles warm-up? Will they receive a guide?

Performance Area: Will the performance be in an auditorium, gym, other area? Will there be power available? How will groups get in/out of area? Will the color guard be able to perform?

Retreat/Critique: Where should drum majors/officers report to before awards? Where will critique be located?

Tickets: What is the price of tickets? Where can they be purchased?

Concessions: Where will concessions be located? (if you would like include a menu, please provide a separate attachment)