



35rd Annual MOHS Competition

Mount Oliver High School

18 Cory Rd

Flanders, NJ 07836

Saturday, October 12, 2019



EVENT HOST CONTACTS

Michael Seelman
(908) 413-4764

Mseelman@ferreiraconstruction.com

Earl Bream
(973) 986-4580
ebream23@gmail.com

USBANDS CONTACTS

Jim Sheeley
JSheeley@yea.org

Amanda Ehst
Aehst@yea.org



EVENT SCHEDULE



ADJUDICATION PANEL & EVENT STAFF



Directions

Parking: Buses and Spectators will park in the front of the school. Once filled, spectators will be directed to remote parking where shuttle bus service will be provided. Pit vehicles will park in the rear of the school through a separate entrance. (see maps). Note: tailgating is permitted in the parking lots.

Restrooms: There are the restrooms for ensemble members/volunteers/spectators behind the concession stand and in the High School

Member Re-Entry: Band members will be differentiated from spectators in order to be allowed into the stadium via hand stamp.

Tickets: Tickets cost \$15 for an adult and \$10 for students or seniors. Children 5 and under are free. Tickets can be purchased at the main gate.

Warm Up: Ensembles will be led to a warmup location. There be two guides monitoring the warmup and leading the ensemble from location to location.

Field Surface: The field is artificial turf with high school hashes.

Power on field: A power cord will be located at the 50-yard line.

Competition Suite: Adjudicator commentary for all USBands ensembles can be located in Competition Suite shortly after the conclusion of each ensemble's performance. Directors may grant access to the ensemble's portal with staff / instructors and may request help from USBands representatives to resolve any issues accessing Competition Suite.

Retreat/Critique: Drum majors only, report to the scoreboard before the final band performs.
Critique for the first half will be conducted in reverse performance order.

Awards: Trophies will be awarded to all participating bands. Certificates will be awarded for caption awards: Color Guard, Music, Overall Effect, Percussion, and Visual Performance

Concessions: An outdoor concession stand is located adjacent to the performance field.

Credentials/Access: Band Directors and staff will be issued 8 VIP wristbands for entrance to the hospitality room and the competition. The Pit Crew/Chaperones will be issued 10 wristbands for entrance into the competition. If additional wristbands are required due to larger staff and/or pit crews, please send an email request to mseelman@ferreiraconstruction.com.

Video/Audio Recording: One member from each band be allowed to record the performance for archive-purposes only. The recording area will be in the stadium announcers' box.

Mt. Olive High School
18 Corey Rd
Flanders, NJ 07836

Directions from the East:

1. Route 80 West to Exit 27A (Route 206 South - Somerville)
2. Route 206 South to Drakesdale Road – Approx. 2 miles (Traffic Light - Exxon on Right)
3. Turn right and proceed on Drakestown Road.
4. Make right turn onto Corey Road.
5. Make quick Right into Mt. Olive High School.

Directions from South:

1. Route 287 (North) to Route 206 North (Netcong)
2. Route 206 North to Drakestown Road – Approx. 15.1 miles (Traffic Light – Exxon on Left)
3. Turn left and proceed on Drakestown Road.
4. Make right turn onto Corey Road.
5. Make quick Right into Mt. Olive High School.

Directions from West (Route 80):

1. Route 80 East to Exit 27 (Route 206 South – Somerville)
2. Route 206 South to Drakesdale Road – Approx. 2 miles (Traffic Light - Exxon on Right)
3. Turn right and proceed on Drakestown Road.
4. Make right turn onto Corey Road.
5. Make quick Right into Mt. Olive High School.

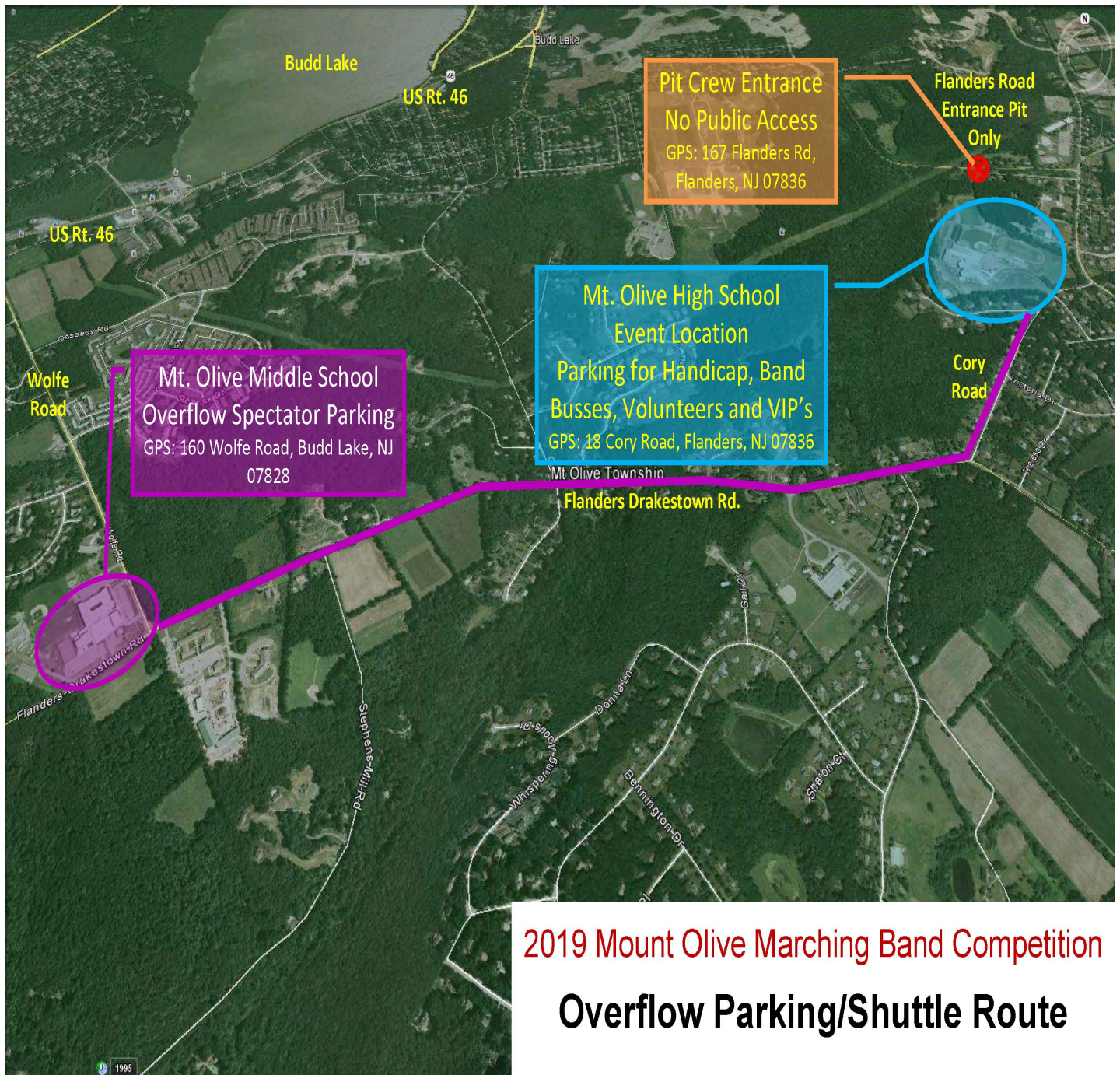
Directions from West (Route 46):

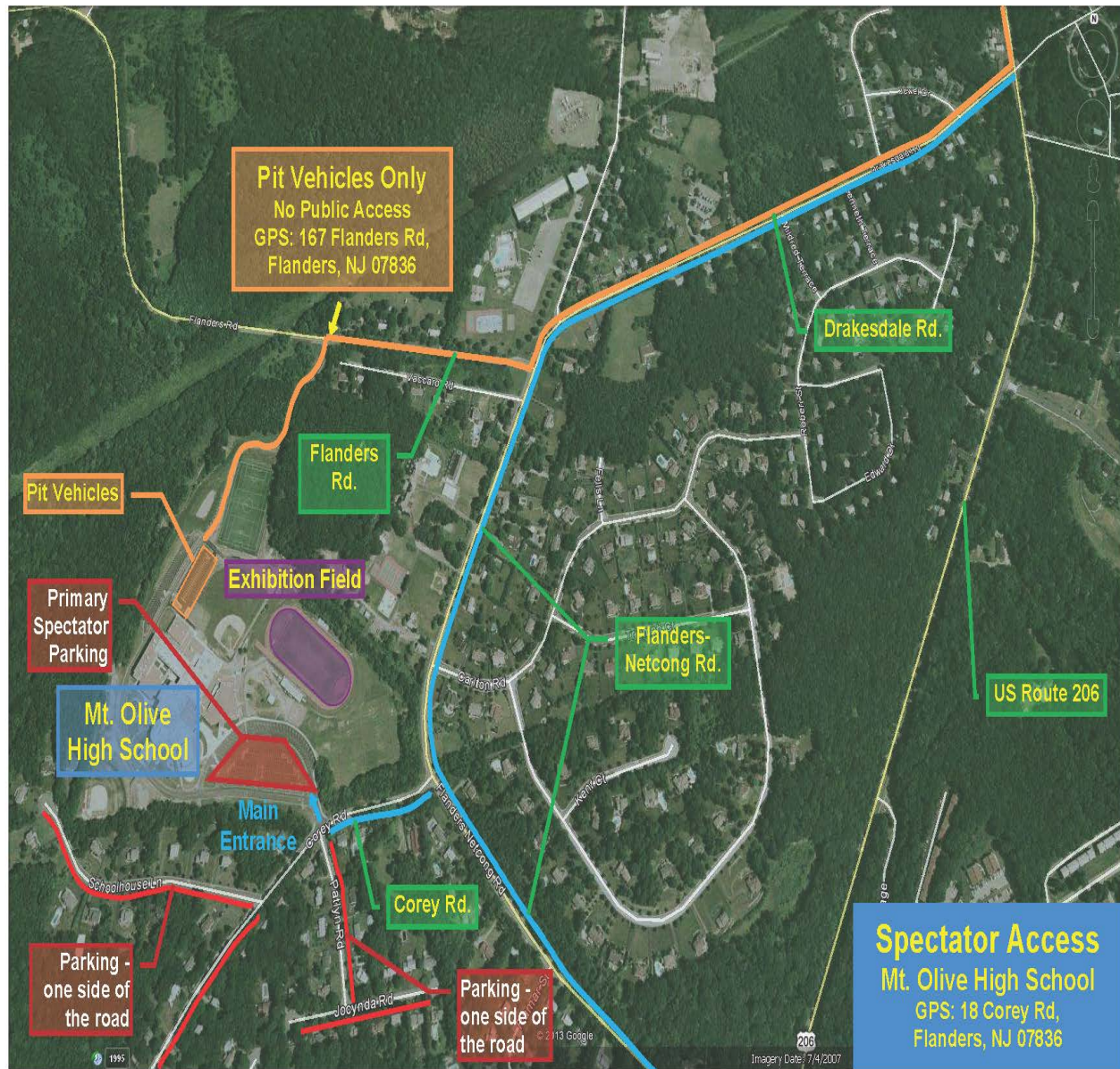
1. Route 46 East to Wolfe Road
2. Turn Right onto Wolfe Road.
3. Wolfe Road to Stop sign
4. Turn Left on Flanders - Drakestown Road (proceed approx. 1.6 miles)
5. Turn Left on Corey Road. - MOHS on Left (Approx. 4 miles)

Overflow Spectator Parking Directions (Shuttle service provided) (see MOHS Overflow Parking/Shuttle Route Diagram)

To Mt. Olive Middle School from Mt. Olive High School

1. Make a Right out of Mt. Olive High School lot and go to the Stop sign (approx. .4 miles).
2. Make Right turn onto Flanders - Drakestown Road (approx. 1.6 miles)
3. The Mt. Olive Middle School will be on your right (Wolfe Road)
4. Parking available off Flanders - Drakestown and Wolfe Road.



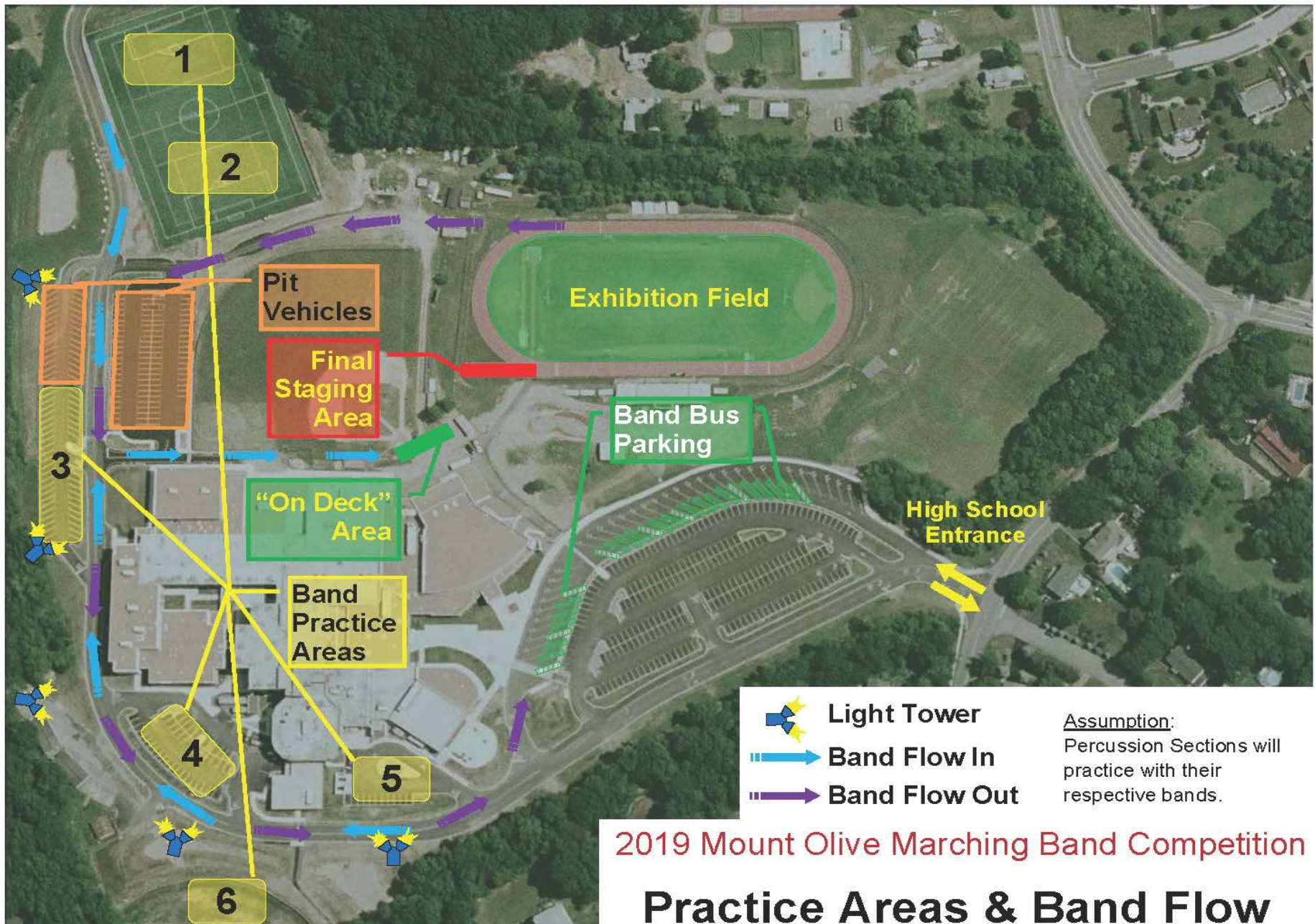


- Spectator Access
- Pit Vehicle Access
- Street Parking (one side only)

2019 Mount Olive Marching Band Competition Access and Primary Parking

SITE OVERVIEW MAP

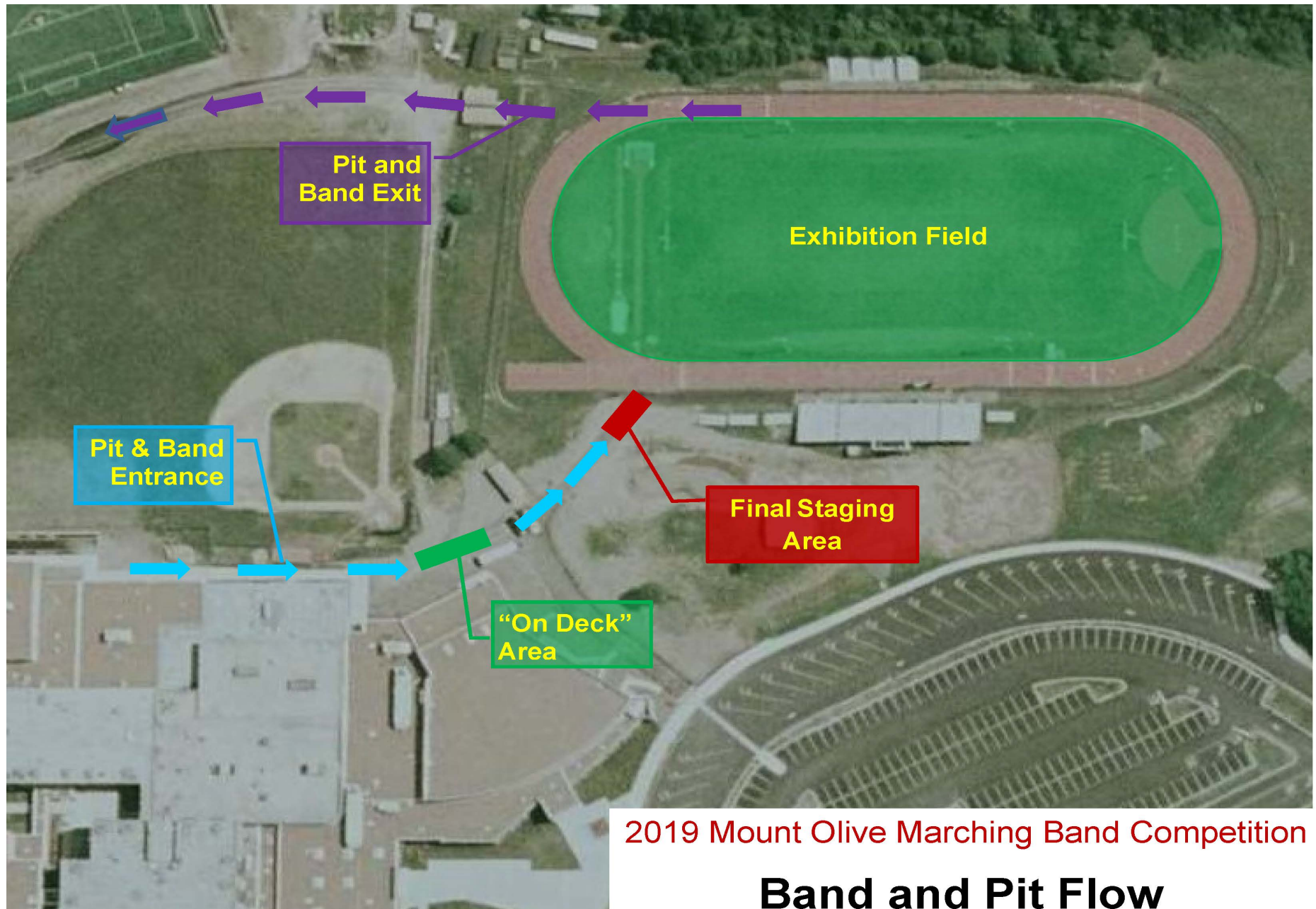




2019 Mount Olive Marching Band Competition

Practice Areas & Band Flow

ENSEMBLE FLOW MAP





SEVERE WEATHER MAP

In the event of rain in the forecast, a
separate packet will be sent by Thursday,
October 10th, 2019

Parking: Buses and Spectators will park in the front of the school. Once filled, spectators will be directed to remote parking where shuttle bus service will be provided. Pit vehicles will park in the rear of the school through a separate entrance. (see maps)

Restrooms: There are the restrooms for ensemble members/volunteers/spectators in the High School.

Member Re-Entry: Band members be differentiated from spectators in order to be allowed into the stadium via hand stamp.

Tickets: Tickets cost \$15 for an adult and \$10 for students or seniors. Children 5 and under are free. Tickets can be purchased at the main entrance to the school.

Unloading Area: Each warmup area has its own unloading area. Upon arrival, each band will be paired with guides to direct them to the correct area.

Warm Up: Ensembles be led to a warmup location. There be two guides monitoring the warmup and leading the ensemble from location to location.

Performance Location: The performances will take place in the main gym.

Power: A power cord will be provided in the front of the performance area.

Retreat/Critique: Drum majors only, report to the scoreboard before the final band performs. **Critique for the first half will be conducted in reverse performance order.**

Concessions: Concessions will be located in the main lobby.

Video/Audio Recording: One member from each band be allowed to record the performance for archive-purposes only. The recording area will be in the bleachers.