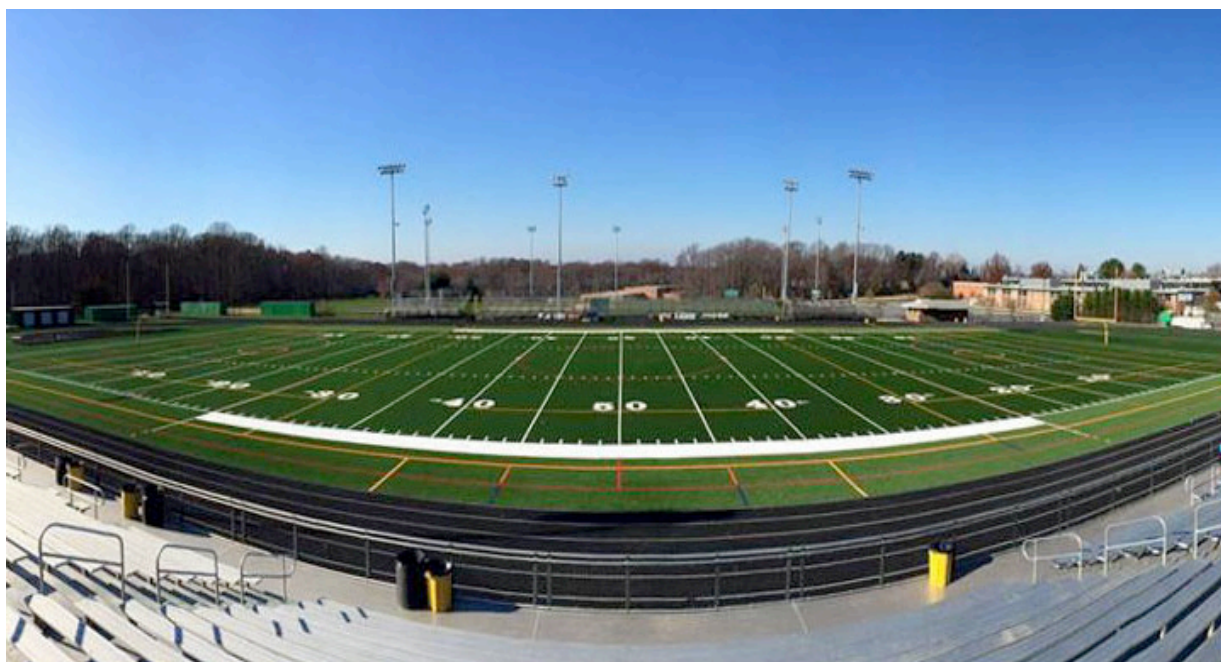




## Mid-Atlantic Regional Championships

Carroll Field, Arundel High School  
1001 Annapolis Road, Gambrills, MD  
Saturday, November 2<sup>nd</sup>, 2019

Updated 10/29/19



### EVENT HOST CONTACTS

JR Suter  
(443) 867-7736  
jrsuter@me.com

Ian Burns  
(410) 440-9012  
iburns@aacps.org

### USBANDS CONTACTS

Jim Sheeley  
(908) 442-1360  
jsheeley@yea.org

Carissa Bryant  
(410) 350-1014  
cbryant@yea.org

## EVENT SCHEDULE

See Director Packet for Prelims and Finals Schedule.



## ADJUDICATION PANEL & EVENT STAFF

See Director Packet for Prelims and Finals Adjudicators and Event Staff.

Your onsite contact is Ben Regalado, who can be reached at 410-428-9101 or [bregalado@yea.org](mailto:bregalado@yea.org).

# IMPORTANT EVENT INFORMATION

**Parking:** Busses will park on the side of the main entrance drive and in the lot near the main entrance. Trucks will be parked in the 1<sup>st</sup> left once on the main entrance. Please see the provided attachment.

**Restrooms:** for participating bands (students and accompanying adults) will be inside the Gymnasium entrance of the high school. There are also restrooms available in the stadium.

**Member Re-Entry:** Greeters will provide band members with wristbands for re-entry into the stadium. Accompanying parents should have a valid USBands provided credential. Accompanying adults who wish to re-enter the stadium will be required to show their credential or they must pay for a ticket to enter the stadium.

**Tickets:** Tickets will be \$20 for an all-day pass and \$12 for a single session and can be purchased at the gate. Children under 6 are free. **Please note that the ticket booth is now located opposite the arrow direction as the construction is now complete.**

**Registration:** All directors should check in at the designated Registration area to pick up wristbands and event information.

**Updated PLEASE NOTE: Prelims Scores:** To allow students to have the best experience and yet bring their competitive best performance to prelims, *all bands will have a chance to perform “under the lights”*. As a result, during the prelims awards ceremonies only placement within class will be announced. A Class bands should remind students, staff and parents that scores may vary from prior experience as adjudication will be on Open Class sheets.

**NEW PLEASE NOTE: Finals Qualification:** While ALL bands will have a performance in the evening, the 10 *adjudicated* finalists will be the winner of each class plus the next 6 highest scoring bands, regardless of class. These 10 finalists will be randomly assigned a performance order among the five highest and five lowest scoring groups based on the draw procedure below.

The remaining non-finalist bands will perform in exhibition for adjudicator comments only (no score).

**Updated PLEASE NOTE: Finals Performance Order Draw:** Upon arrival each director will be asked to draw a number that will be used to determine the finals (or exhibition) performance order. *If a band elects to NOT perform during finals or exhibition, they should notify USBands at registration.*

Using the prelims scores for all Bands will be grouped into 3 pools – the five highest scoring bands, the next 5, and then the 3 exhibition bands. The number drawn will be used to determine the performance order *in that pool*, with the highest number performing first. (For example, if the 5 highest scoring bands (A-E) drew these numbers, A=13, B=7, C=2, D=5, and E=9, they would performing in the first group of 5 with the highest number performing first, and so on. In this example, the bands would perform as follow: A, E, B, D, and C.)

**Warm Up:** Bands may use the athletic fields at the front of the school for warm-ups (see map below). Rest rooms will be open just inside the entrance to the gym.

# IMPORTANT EVENT INFORMATION

**Field Surface:** Synthetic turf. High school hashes.

**Power on field:** There will be a power line with four outlets located at the 50-yard line.

**Competition Suite:** Adjudicator commentary for all USBands ensembles can be located in Competition Suite shortly after the conclusion of each ensemble's performance. Directors may grant access to the ensemble's portal with staff/instructors and may request help from USBands representatives to resolve any issues accessing Competition Suite.

**Awards Retreat:** Retreat is for Drum Majors/Student Leaders only. Drum Majors/Student Leaders should report in front of the concession stand on the track as the last band is setting up to perform. To facilitate the prelims awards ceremony, we ask that **ONLY** drum majors and guard captains be present for the prelims awards unless the band has determined it will not stay for the evening finals or exhibition performance. During the finals awards bands may send all the student leaders.

**Critique:** There will be no critique.

**Awards:** Trophies will be given to all participating bands by class (prelims) and overall (finals) with certificates for Best Music, Best Visual, Best Overall Effect, Best Color Guard and Best Percussion.

**Souvenirs/Merchandise:** There will be vendors and food trucks near the concession stand including a USBands tent.

**Concessions:** Concessions are located by the main gate in the stadium area.

**Credentials/Access:** Please make sure your staff and volunteers have their USBands credentials when they are entering the stadium audience areas. Students will be provided wrist bands upon arrival for stadium access. All staff should have the USBands credentials when they are inside accessing the hospitality room.



## SITE OVERVIEW MAP





## ENSEMBLE PARKING & WARMUP

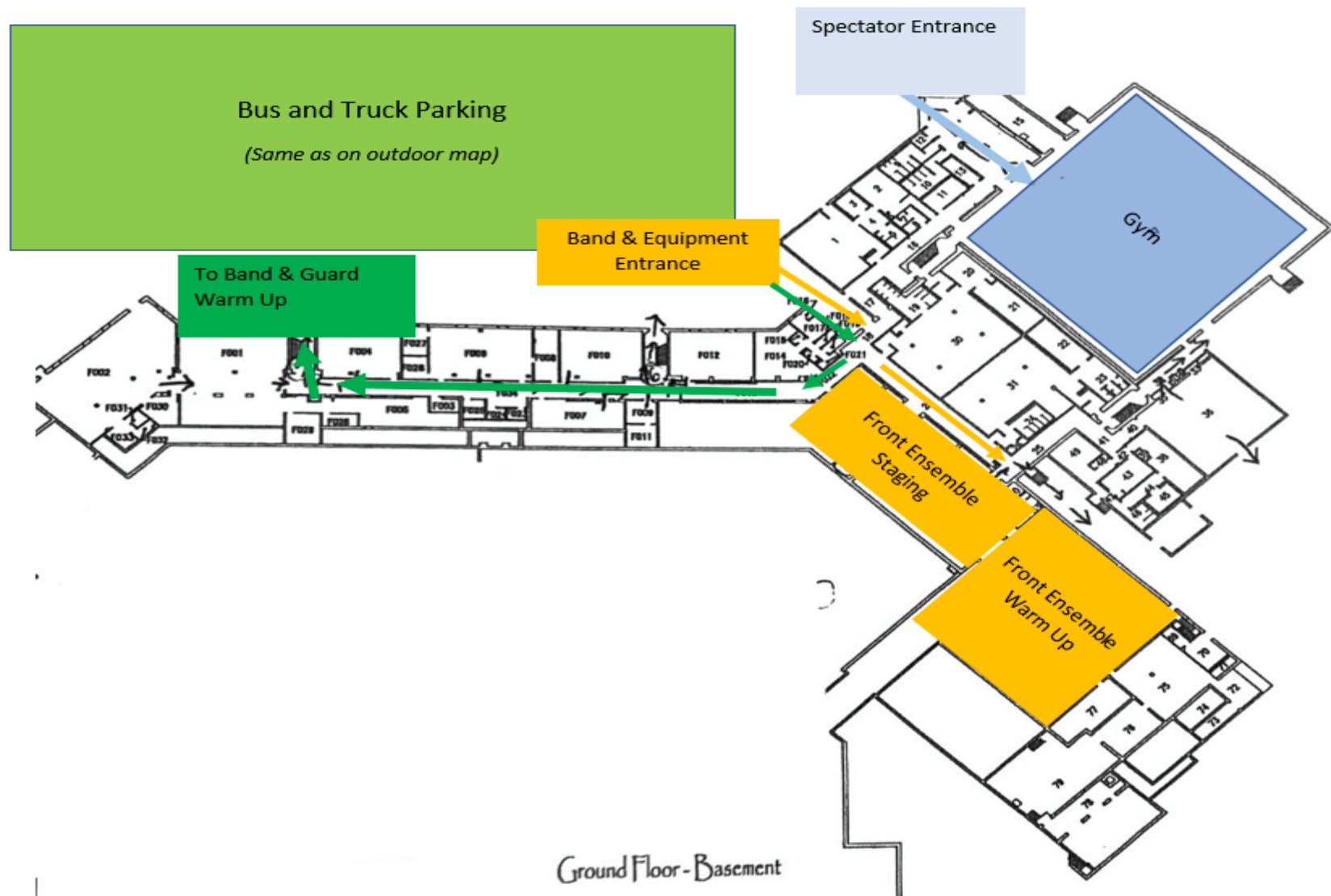


## ENSEMBLE FLOW MAP





# SEVERE WEATHER MAP



**Arrival:** Buses and trucks should enter from Route 175

**Parking:** All Buses will be parked in the front lot of the high school and along the bus lanes in front of Arundel High School when entering off of the Route 175 entrance. All Buses and equipment trucks will be assisted by parking staff to their spaces as they arrive. Volunteers will park in the lot next to the stadium, at the rear of the school. Spectator parking will be in the lot adjacent to the Arundel High School stadium, as well as the lower fields. Volunteers will be at the main entrances of the school to direct spectators to open parking spaces.

**Restrooms:** Restrooms are located inside of the gym and auditorium entrances. At check-in each band will be assigned a host volunteer who will direct them to open facilities. Restrooms for volunteers will be located down the hall and to the left of the hospitality room. Restrooms for spectators are located to the right on the gym concession stand.

**Member Re-entry:** All band members will receive a wristband at the check-in station. Band members will enter the indoor performance area through the spectator entrance by presenting their wristband.

**Warm-up:** In the event of rain, ensembles will be warming up in the cafeteria, auditorium or auxiliary gym. Hosts will be assigned to each ensemble and will assist in showing each ensemble to their designated warm up space/time.

**Performance Area:** In the event of rain, a performance will be held in the main gym. Groups will enter the gym through the main gym entrance. Please see map for exterior door where pit equipment will be stored. Color guard will have space to perform on either side of performing bands. A power strip will be provided at the "50" in the gym performance space.

**Tickets:** Tickets will be \$20 for an all-day pass and \$12 for a single session and can be purchased at the gate. Children under 6 are free.

**Concessions:** Concessions for the gym area are located immediately inside of the gym entrance.