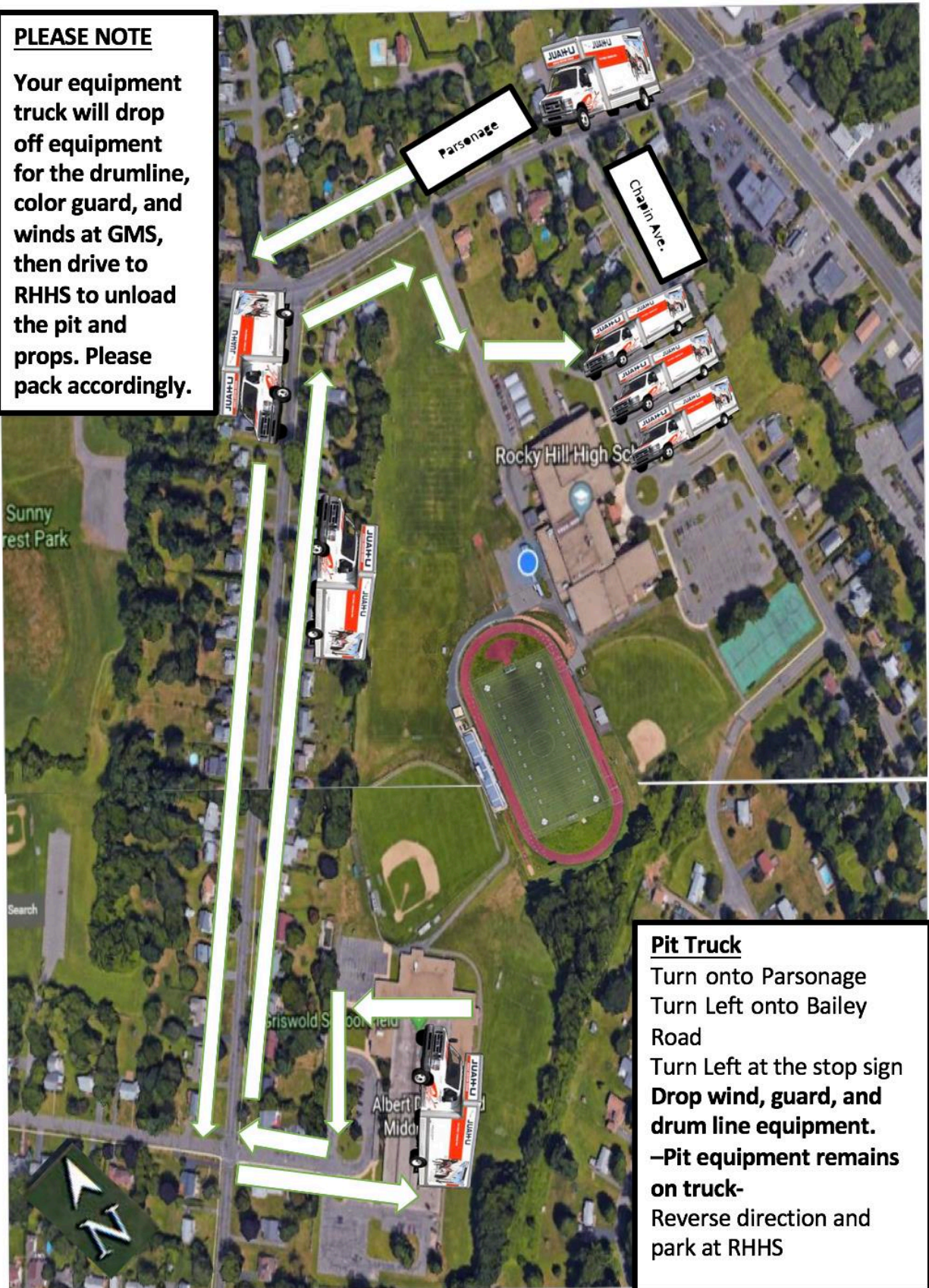


# ENSEMBLE PARKING & WARMUP (PIT TRUCK PARKING)

## PLEASE NOTE

Your equipment truck will drop off equipment for the drumline, color guard, and winds at GMS, then drive to RHHS to unload the pit and props. Please pack accordingly.



## Pit Truck

Turn onto Parsonage  
Turn Left onto Bailey Road  
Turn Left at the stop sign  
**Drop wind, guard, and drum line equipment.**  
–Pit equipment remains on truck–  
Reverse direction and park at RHHS