



Rocky Hill High School Showcase

Rocky Hill High School
50 Chapin Ave.

Rocky Hill, CT 06067

Saturday, September 29th, 2018



Notes from the Director, Jim Shuman:

1) Parking- Please note the new pattern this year

Handicapped parking will be at Rocky Hill High School (50 Chapin Ave)

Spectator parking will be at Elm Ridge Park (located on Elm Street). There will be a shuttle that will bring all spectators to and from the stadium.

2) Pit truck critical packing information

Your equipment truck will drop off equipment for the drum line, color guard, and winds at Griswold Middle School, then it will be directed to RHHS to unload the pit and props. Please pack accordingly.

EVENT HOST CONTACTS

Jim Shuman
(513) 255-5255
shumanj@rockyhillps.com

USBANDS CONTACTS

Mike Trehey
(484)-387-1136
mtrehey@usbands.org

Eric James
(484)-387-1142
ejames@usbands.org

**THIS PAGE WILL BE
COMPLETED BY
USBANDS**

**THIS PAGE WILL BE
COMPLETED BY
USBANDS**



IMPORTANT EVENT INFORMATION

Parking: Handicap parking will be located at Rocky Hill High School. Spectator parking will be at Elm Ridge Park. There will be a shuttle service to take people from Elm Ridge to RHHS.

Restrooms: Performing members will have access to the restrooms inside Griswold Middle School during warm up, which is where the students are dropped off from the buses.

Member Re-Entry: Students will have their hands stamped upon arrival.

Tickets: General Admission is \$10. Students and Senior Citizens cost \$5. Tickets can be purchased upon entry to the event.

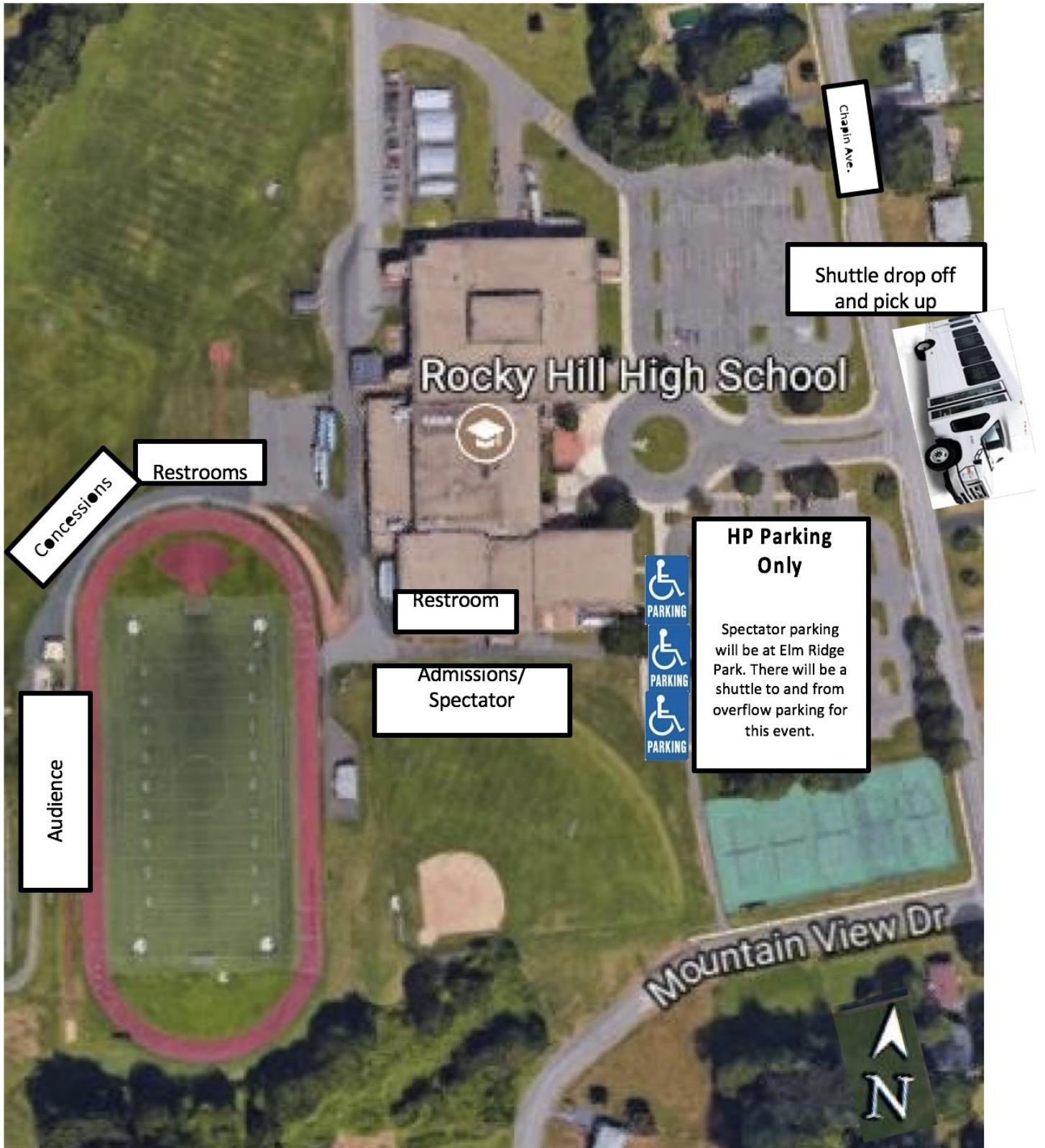
Warm Up: Warmups will be at Albert D. Griswold Middle School

Field Surface: The field surface is Turf. Power will be available located at the 50 yard line.

Competition Suite: Adjudicator commentary for all USBands ensembles can be located in Competition Suite shortly after the conclusion of each ensemble's performance. Directors may grant access to the ensemble's portal with staff/instructors, and may request help from USBands representatives to resolve any issues accessing Competition Suite.

Retreat/Critique: Drum majors should report under the scoreboard for retreat. Critique will take place inside the High School Cafeteria.

Concessions: Concessions will be located at the tent to the right of the viewing stands.



Handicapped Parking

Follow Silas Deane Hwy

Turn right on Parsonage

Turn Left on Chapin Ave

Park at RHHS

Spectator Parking (Elm Ridge)

Follow Silas Deane Hwy

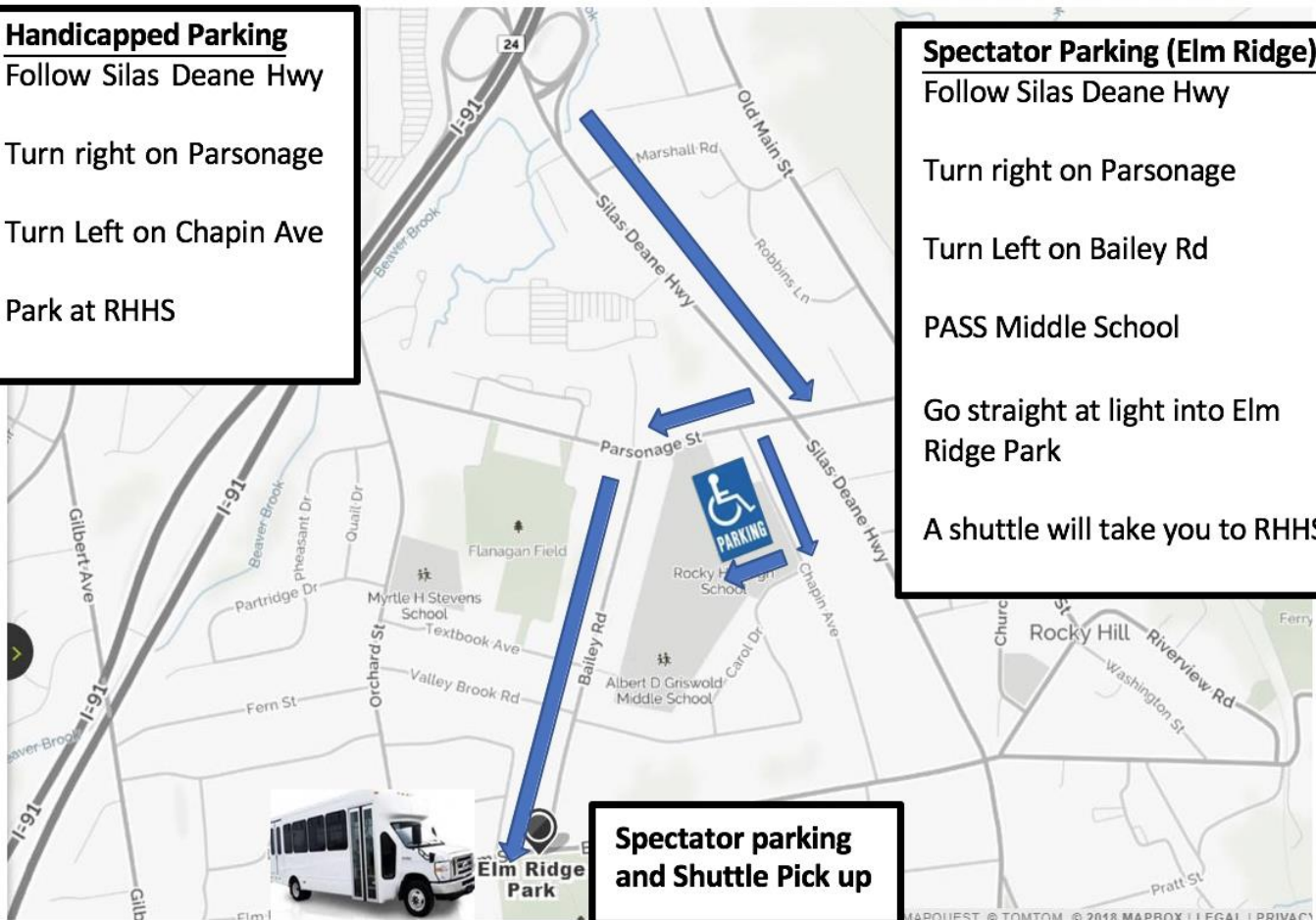
Turn right on Parsonage

Turn Left on Bailey Rd

PASS Middle School

Go straight at light into Elm Ridge Park

A shuttle will take you to RHHS

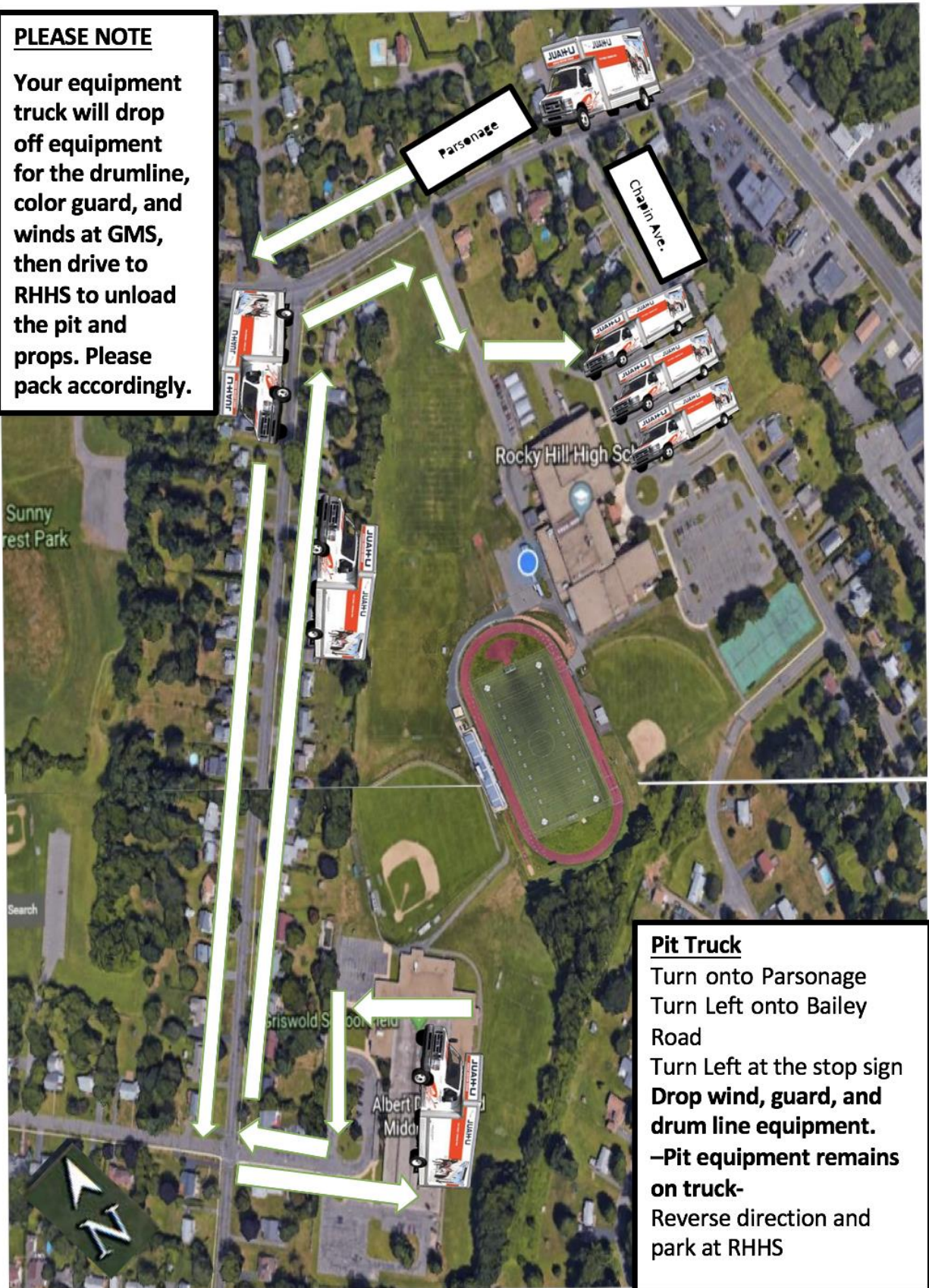


**Spectator parking
and Shuttle Pick up**

ENSEMBLE PARKING & WARMUP (PIT TRUCK PARKING)

PLEASE NOTE

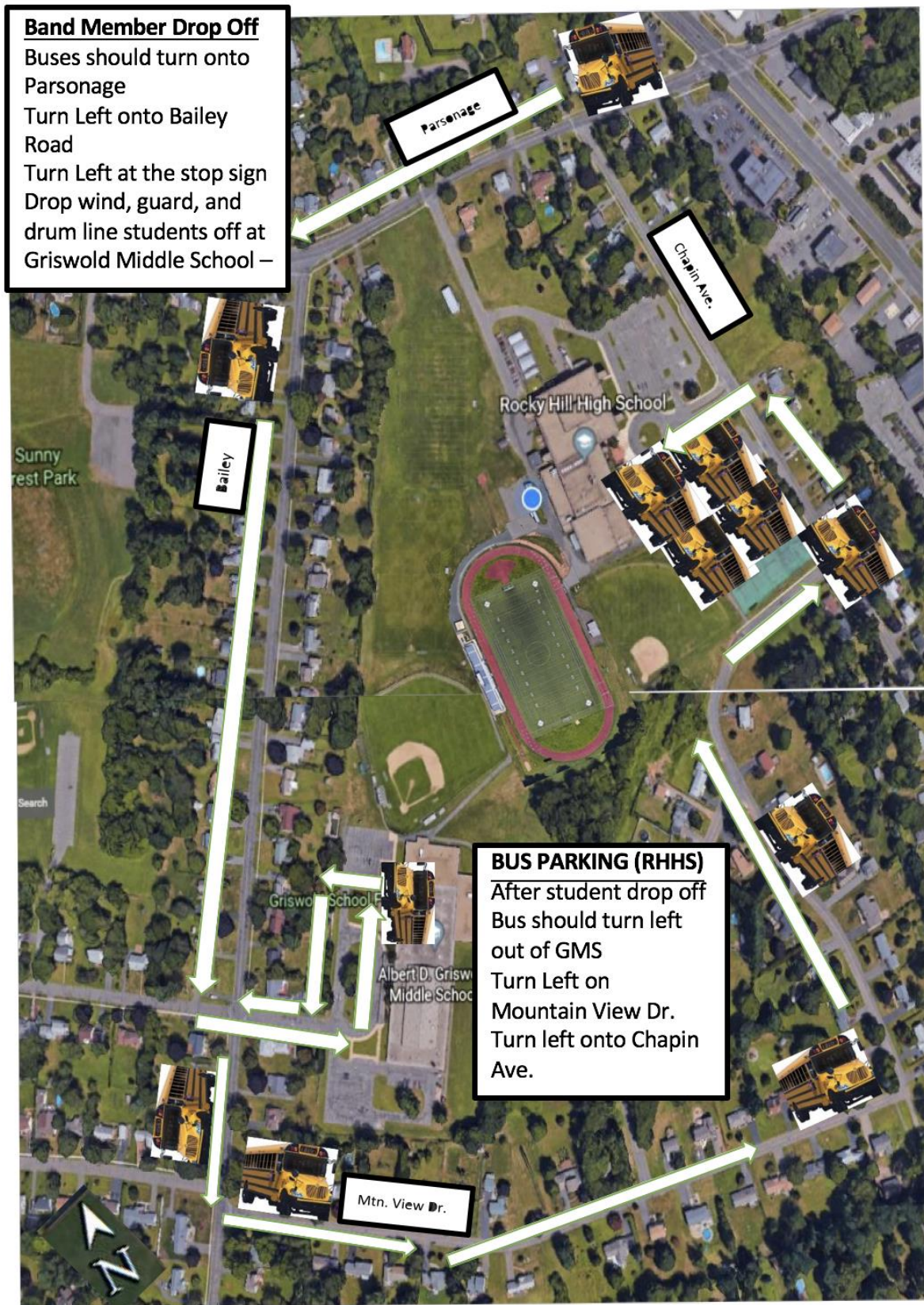
Your equipment truck will drop off equipment for the drumline, color guard, and winds at GMS, then drive to RHHS to unload the pit and props. Please pack accordingly.



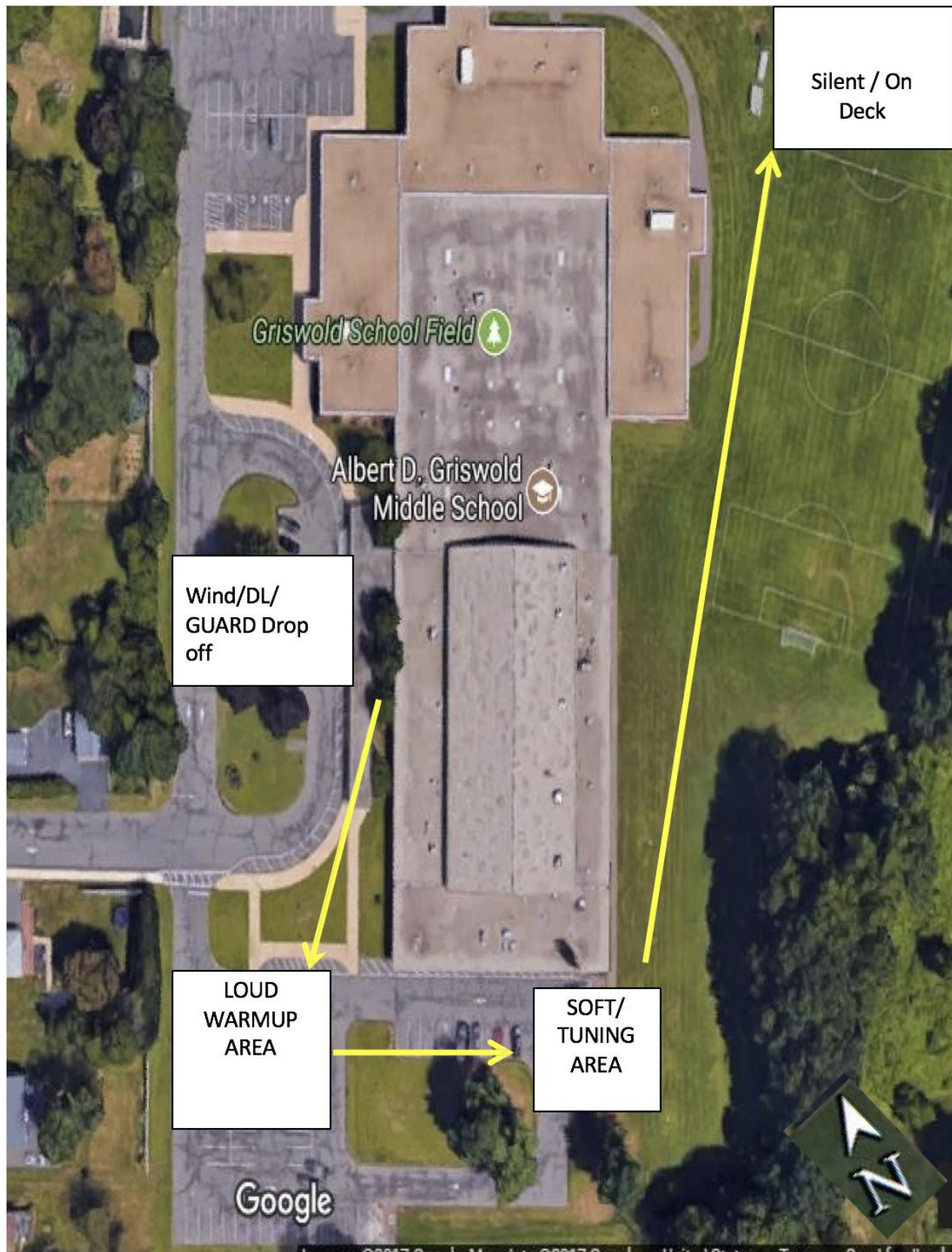
Pit Truck

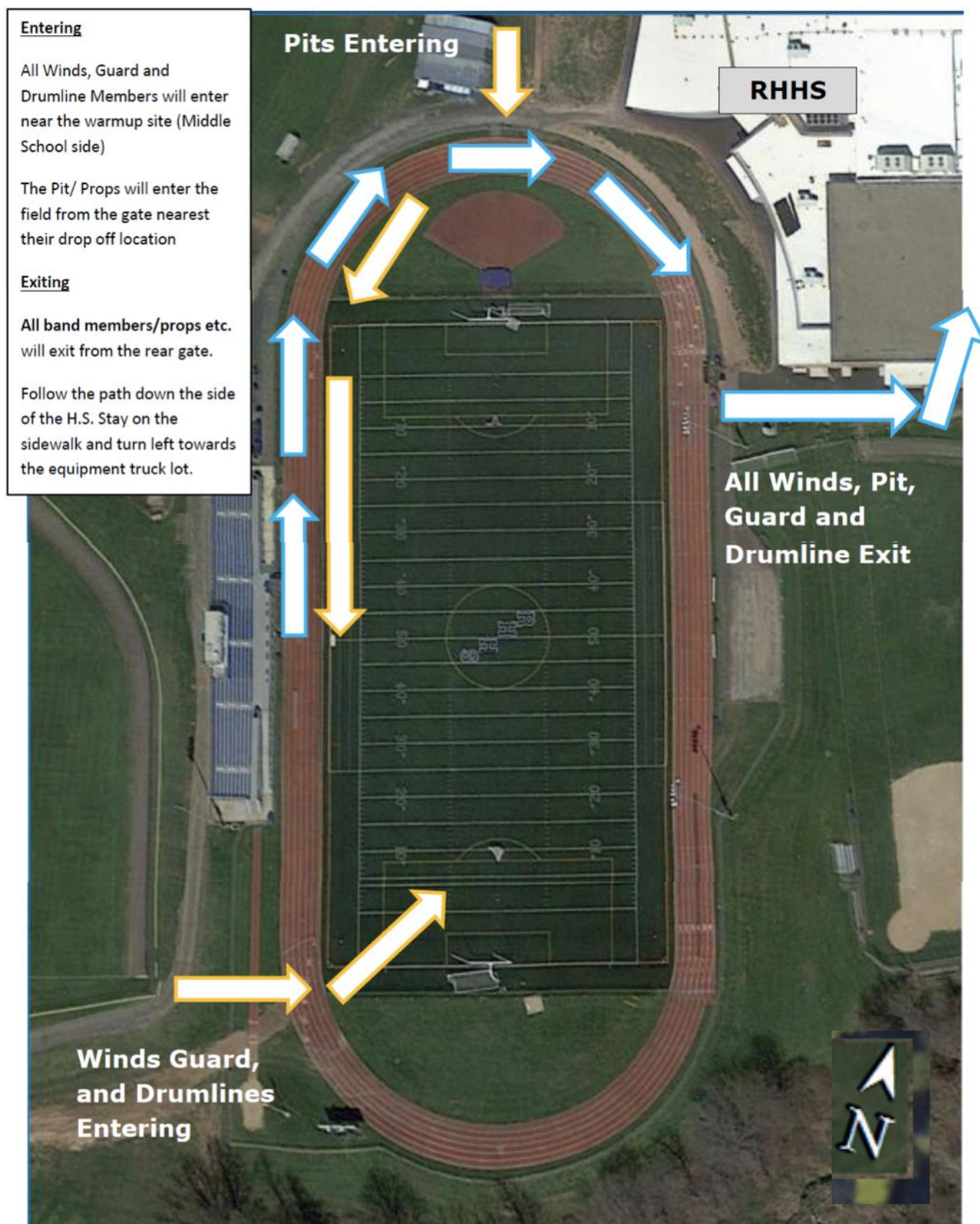
Turn onto Parsonage
Turn Left onto Bailey Road
Turn Left at the stop sign
Drop wind, guard, and drum line equipment.
–Pit equipment remains on truck–
Reverse direction and park at RHHS

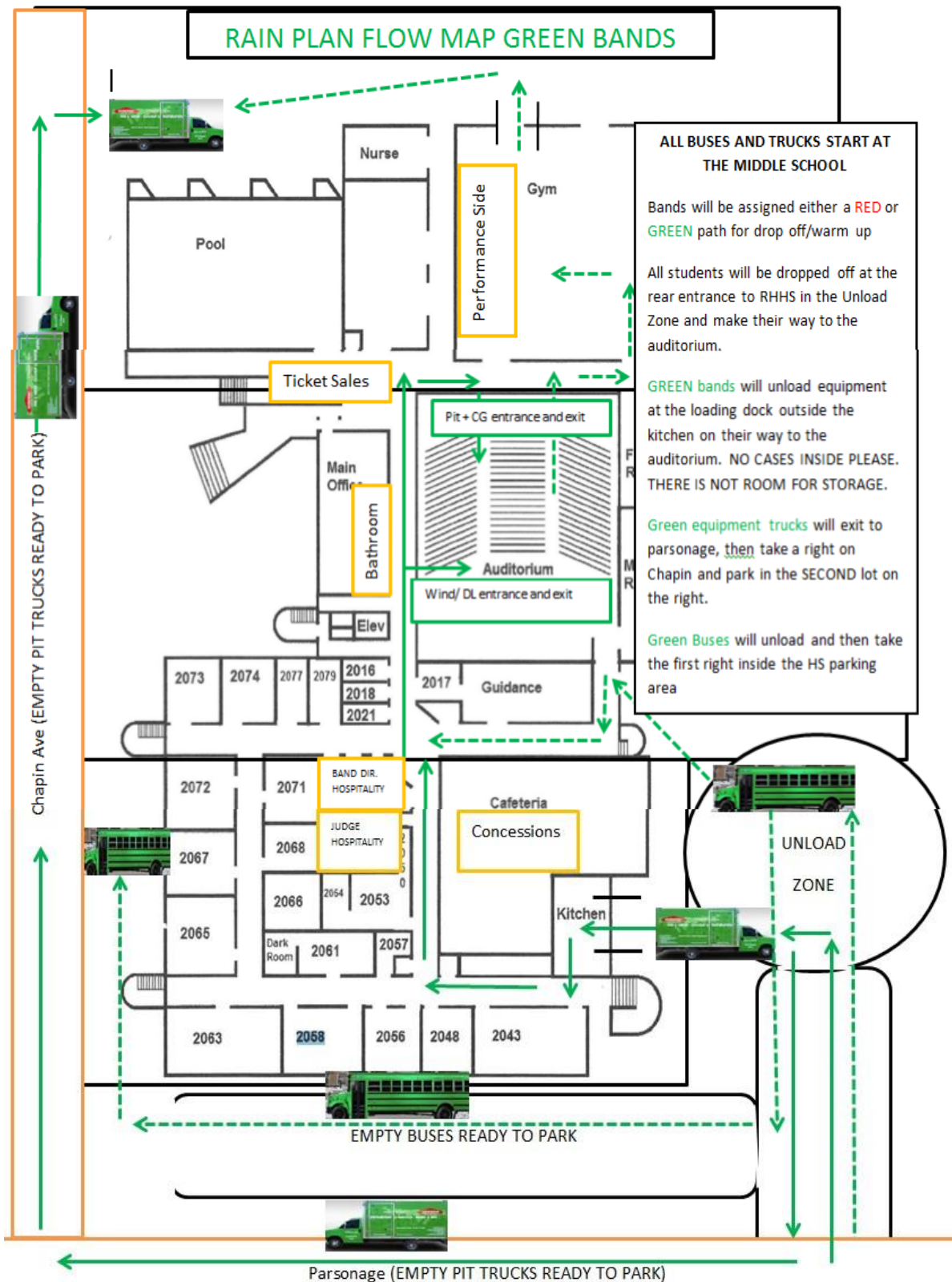
ENSEMBLE PARKING & WARMUP (BUS PARKING)

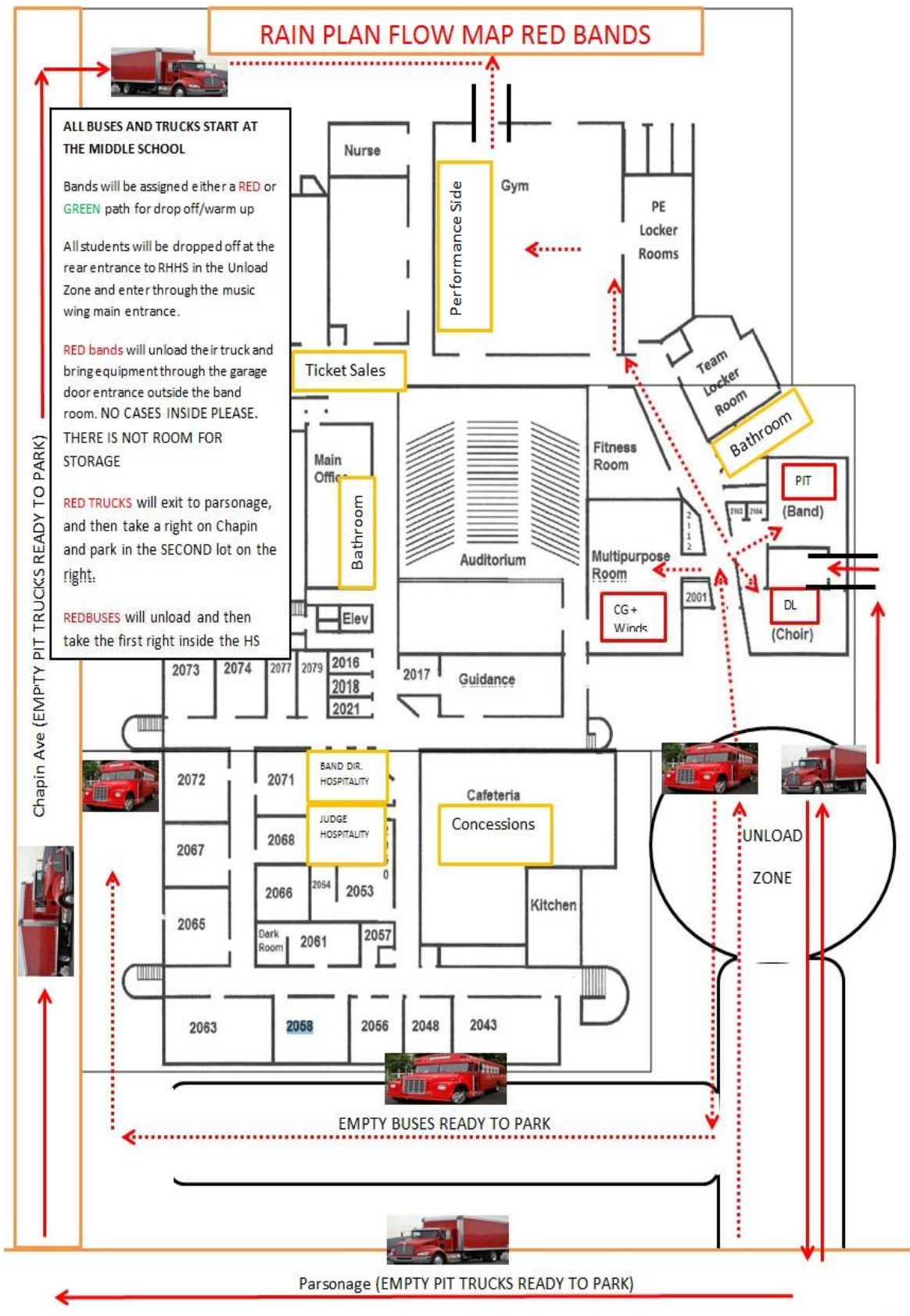


ENSEMBLE PARKING & WARMUP (WARMUP – MIDDLE SCHOOL)









In the event of moderate to severe bad weather, the host band director and the show coordinator from US Bands will meet make a decision regarding the on how the show is to proceed. There are two options for the marching band show:

- 1- If there is medium to heavy amounts of rain, and there is an increased chance of injury to marchers, the show will proceed as a standstill. Groups will perform as scheduled and the “on Field Retreat” and awards ceremony will be replaced with a reading of scores over the PA system.
- 2- In the event that there is severe rain, and or thunder / lightning, the show will be moved indoors. If a group is performing on the field when the decision to relocate is made, their band director and drum major will be instructed to stop the show when it can be done safely. There will then be a 40 minute pause in the schedule to allow reset for an indoor show.

Procedure for an indoor show:

- 1- Bands will report with buses and equipment trucks to Griswold Middle school
 - 2- Bands will be assigned a color (red or green) which will dictate what path they follow for unload/warmup
 - 3- Buses and trucks will be moved to RHHS in order of performance
 - 4- All students will be dropped off at the rear entrance to RHHS in the Unload Zone
 - 5- **RED bands** will unload their truck and bring equipment through the garage door entrance outside the band room
 - 6- **GREEN bands** will unload equipment in the loading dock outside the kitchen on their way to the auditorium
 - 7- No cases will be allowed in the school
- 8- Bands will exit out of the gym after their performance and meet their trucks in the parking lot.