



Marching Titans Showcase

Mark T. Sheehan High School
142 Hope Hill Road
Wallingford, CT 06492
September 22nd, 2018



EVENT HOST CONTACTS

David Giardina
(860) 604-3283
dgiardina@wallingfordschool.org

USBANDS CONTACTS

Mike Trehey
(484)-387-1136
mtrehey@usbands.org

Eric James
(484)-387-1142
ejames@usbands.org

Sheehan High School
September 22, 2018**Contact:** David Giardina**Location:** Sheehan High School - John Riccitelli Field
142 Hope Hill Rd.
Wallingford CT 06492**Schedule (Performance times are subject to change)**

Performance Class	Unit/Director	Location
5:00 PM	**THIS IS A PRELIMINARY SCHEDULE- SUBJECT TO CHANGE**	
5:00 PM	NATIONAL ANTHEM	
5:10 PM	Group I Festival Branford High School (CT) Mallory Legman	Branford CT
5:25 PM	Group I A East Lyme High School Angelica Fadrowski	East Lyme CT
5:40 PM	Group V A Francis T. Maloney High School Brian Cyr	Meriden CT
5:55 PM	Group V A Lyman Hall High School Dean DellaVecchia	Wallingford CT
6:10 PM	INTERMISSION	
6:40 PM	Group II A East Haven High School Co-op Marching Band Matt Laudano	East Haven CT
6:55 PM	Group IV A Berlin High School Christopher Dresko	Berlin CT
7:10 PM	Group IV A Sheehan High School David Giardina	Wallingford CT
7:25 PM	SENIOR RECOGNITION Sheehan High School David Giardina	Wallingford CT
7:30 PM	Exhibition University of New Haven Jason DeGross	West Haven CT
7:45 PM	AWARDS	

Sheehan High School
September 22, 2018**Contact:** David Giardina**Location:** Sheehan High School - John Riccitelli Field
142 Hope Hill Rd.
Wallingford CT 06492**Adjudicators**

Position	Name
Fall 1.1 Chief Adjudicator	Barry Janicula (Carrollton, TX)
Fall 1.1 - Music Individual 1	Steven Fasoli (Trumbull, CT)
Fall 2.1 - Music Ensemble 1	Barry Janicula (Carrollton, TX)
Fall 3.1 - Visual Performance 1	Gerard Glover (Burlington, MA)
Fall 4.1 - Overall Effect 1	Richard McCarty (Hughesville, PA)

Staff

Position	Name
1.1 - Event Coordinator	Kevin Hassan (Stamford, CT)
2.1 - Assistant Event Coordinator	Bill Flaker (Manchester, CT)
3.1 - Tabulator	



IMPORTANT EVENT INFORMATION

Parking: Volunteers will park in the rear of the school. Spectators will park in the rear, side and front of the school.

Restrooms: Upon arrival, members may use the restrooms in the school. Facilities are located by the stadium for volunteers and spectators.

Member Re-Entry: Members will be given a wristband. They can re-enter at the main gate.

Tickets: Tickets are \$10 general admission and \$5 students and seniors

Warm Up: Warm ups will occur in the rear of the school. There will be guides to lead ensembles from location to location.

Field Surface: The field is artificial turf and will have high school hashes. There is a slight slope as ensembles enter and exit the field, and a portion of the walkway is gravel.

Power on field: There will be a power source by the 50 yard line.

Competition Suite: Adjudicator commentary for all USBands ensembles can be located in Competition Suite shortly after the conclusion of each ensemble's performance. Directors may grant access to the ensemble's portal with staff/instructors, and may request help from USBands representatives to resolve any issues accessing Competition Suite.

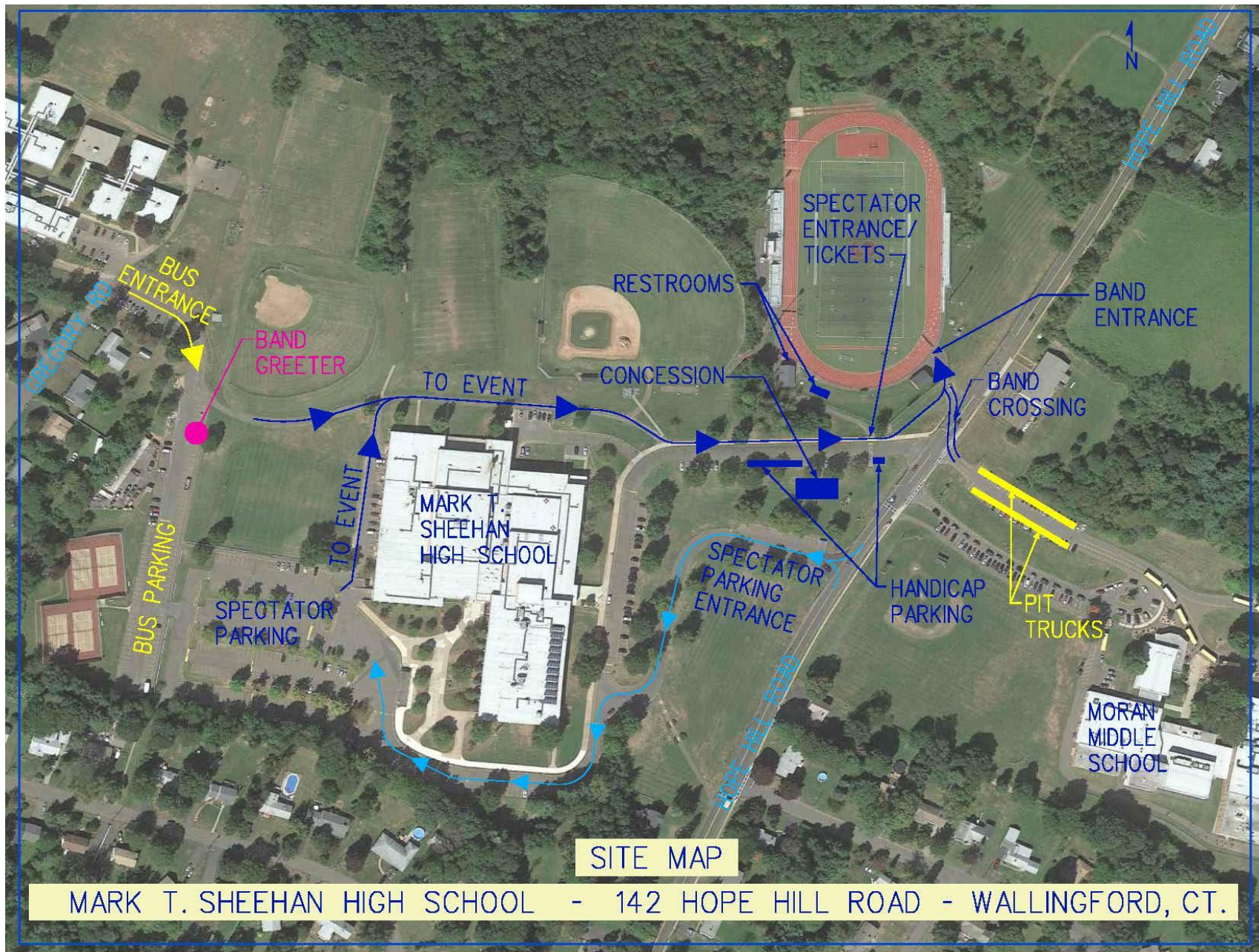
Retreat/Critique: For retreat, Drum majors only will report to shed/garage near field entrance. Critique will be in the teachers' lounge, located off of the main cafeteria.

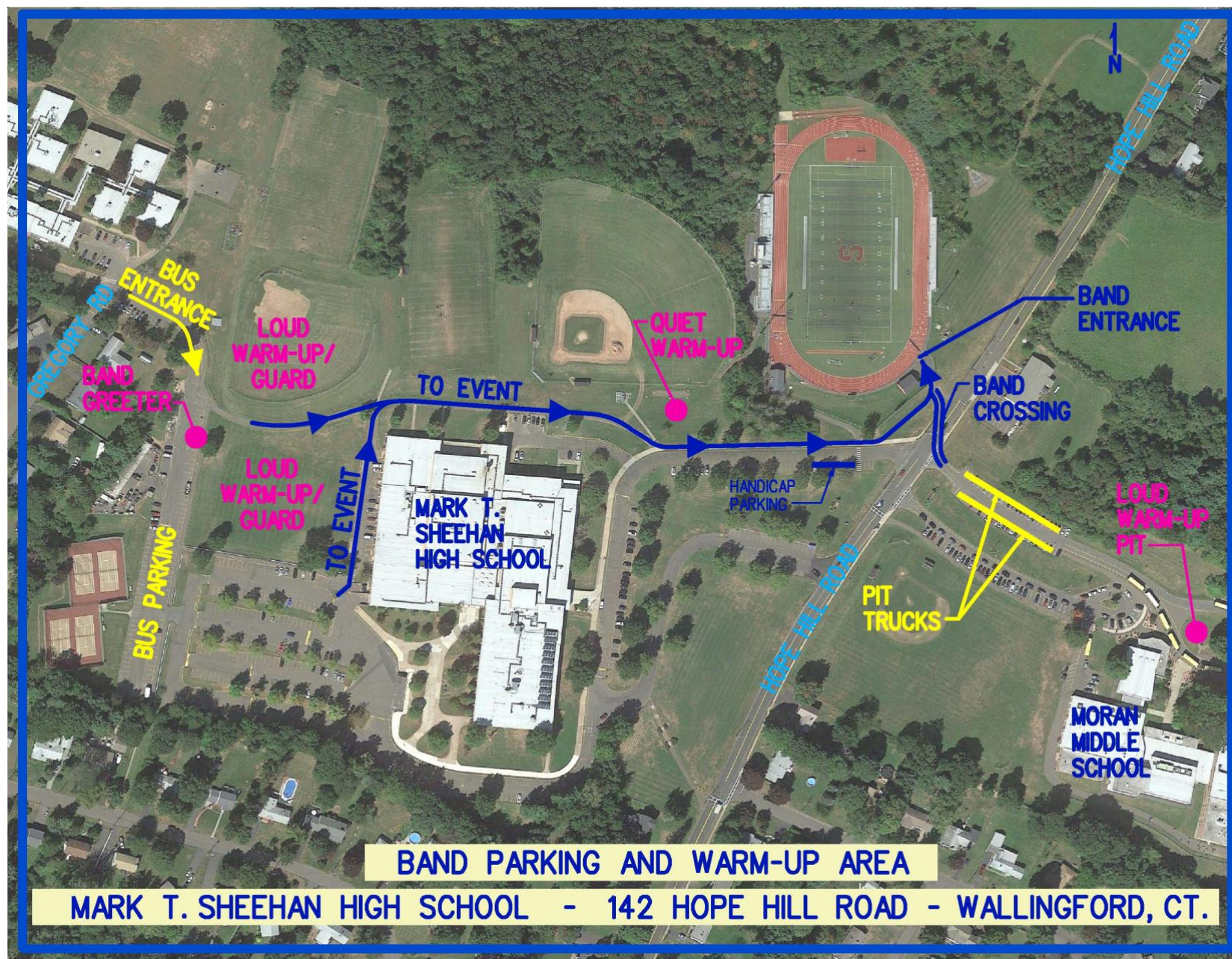
Awards: Trophies will be given for placement and certificates will be given for captions.

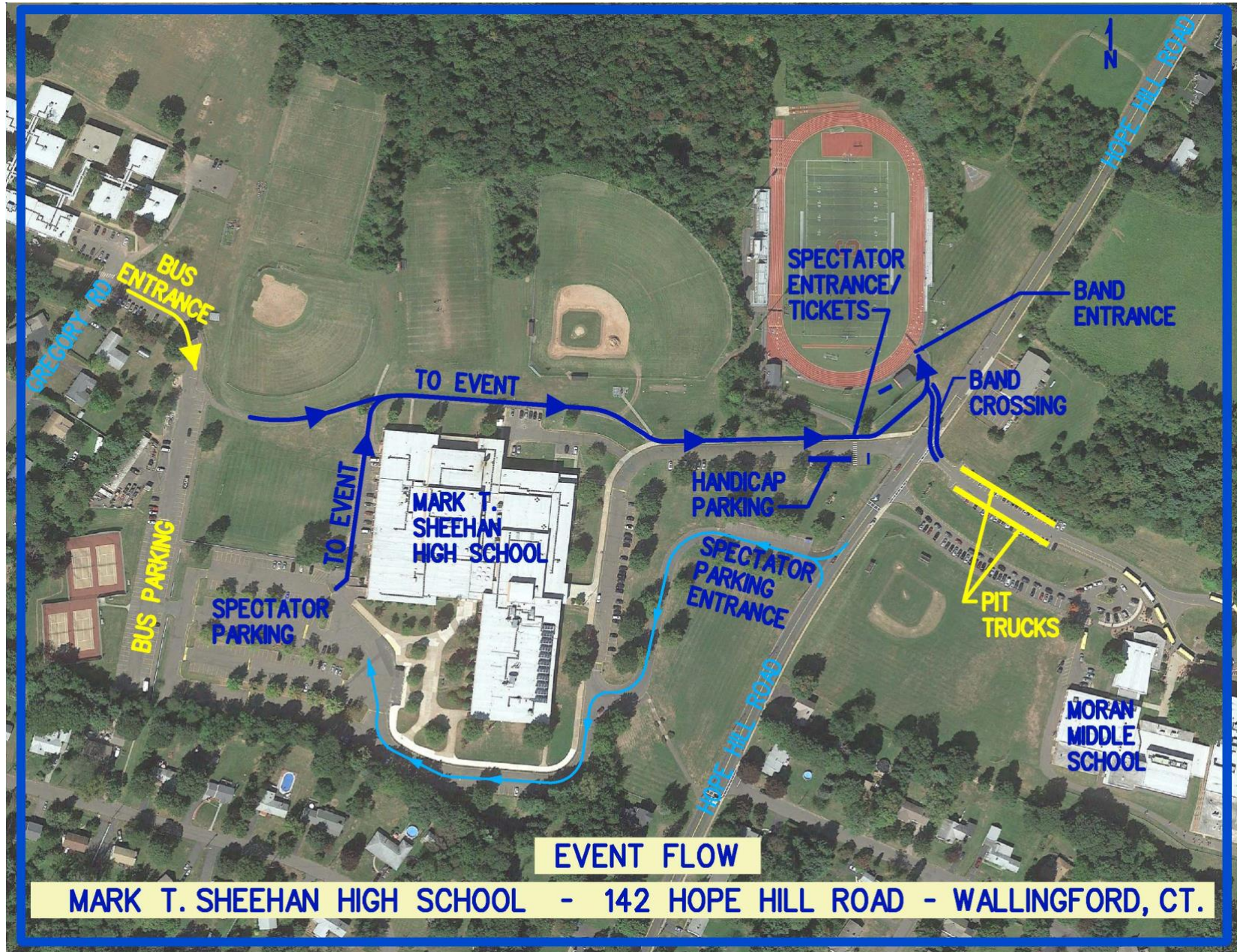
Souvenirs/Merchandise: None

Concessions: Concessions will be located outside the stadium on the front lawn of the school under an outdoor tent.

Credentials/Access: Adjudicators, USBands Staff, Directors and Band Staff members may enter the hospitality room with a USBands badge.







SHEEHAN HIGH SCHOOL RAIN PLAN

Branford

East Lyme

Berlin

UNHMB

Maloney High School

Lyman Hall High School

UNHMB

East Haven

A123, A124

A122, A110

A108, A109, A120, A121

A119, A104, A105, A106, A107

A110, A122, A123, A124

A107, A108, A109, A119, A104, A105, A106, A134, A135, A143

A123, A124

A122, A110

A108, A109, A120, A121

A119, A104, A105, A106, A107

A110, A122, A123, A124

A107, A108, A109, A119,

A104, A105, A106,

A134, A135, A143

**MARK T. SHEEHAN HIGH SCHOOL
MARCHING BAND COMPETITION
RAIN PLAN 9/22/18**

If we need to hold the competition indoors due to inclement weather, bands will be dropped off by bus in the front of the school and enter from the front doors. Bands will be directed to their respective classroom locations in either the first or second hallway closest to the front entrance as outlined on the map. Sheehan band students will remain in their band classroom. Moran students will be directed to the chorus room. Loud warm ups may be conducted in the classrooms.

Pit trucks will unload pit instruments/equipment in the E wing hallway adjacent to Cafe B. If they are ready for soft warm up they will proceed to the auditorium. If they have not been called to the soft warm up, they will remain in this hallway. This is a holding area only - no instrument playing. Any loud warm ups for pit/battery may be conducted outside, adjacent to the pit equipment entrance.

In order of performance, bands will be directed one at a time to the auditorium for the quiet warm up. Bands will enter the auditorium through the left set of double doors (closest to senior court) and will exit the auditorium through the right set of double doors (closest to school entrance). Bands will proceed through the hallway past the administrative offices, turn left past art rooms, straight through to gym entrance across from the pool to perform. Bands will exit the gym to the right, and follow the left side of the hallway straight towards the exit.

Drum majors will assemble for the Retreat in the auditorium, then proceed to the gym using the same entrance as the bands.

Spectators will arrive in senior court through both sets of doors. Spectators would enter the door, pay, and then may enter the gym to view performances or Café A for concessions and grams.

Food concessions would be moved to Café A for guests.

Judges/Directors will be moved to Café B for food and computer/printer/copier availability.

First Aid or holding of any medication needed will be located in the Teacher's Lounge off of Café A.

Pit trucks drop equipment to rear of school by the loading dock near the pit equipment entrance. Once unloaded, pit trucks will park in the last parking lot lane near the grassy area.

Busses drop off band students/staff at front entrance of the school. Busses will proceed around to the rear of the school and park along the tennis courts.

Air grams will still be honored indoors.

No show props/sets will be used. Color guard flags are allowed.

Traffic directional signs will be relocated.

The bankers will be relocated from their original location to the Band Director's office.