



North Warren Regional High School

10 Noe Road

Blairstown, NJ 07825

Saturday, October 20th, 2018



EVENT HOST CONTACTS

Chrissy Romano
(973) 214-0130
gianick33@yahoo.com

Stephen Zuccheri (Director)
(973) 919-9823
szuccher@northwarren.org

USBANDS CONTACTS

Mike Trehey
(484)-387-1136
mtrehey@usbands.org

Eric James
(484)-387-1142
ejames@usbands.org

**THIS PAGE WILL BE
COMPLETED BY
USBANDS**

**THIS PAGE WILL BE
COMPLETED BY
USBANDS**



IMPORTANT EVENT INFORMATION

Parking: The buses will park in the parking lot entrance in the front of the school. Volunteers will park in the same lot as the buses. The spectators will park in the back of the school near the football stadium.

Restrooms: Upon arrival, band members can use restrooms inside the school on the side entrance closest to the stadium. For spectators and volunteers, there are 2 porta potties outside the fenced area of the football field. They can also use the restrooms inside the school on the side entrance closest to the stadium.

Member Re-Entry: Band members will be identified by their uniforms. They will be allowed into the stadium area without paying, and can enter through the entrance gate of the stadium. No stamps or wristbands will be handed out.

Tickets: Tickets are \$10 for adults, \$5 for students K-12. Children under 5 and senior citizens are free. Tickets can be purchased at the ticket booth at the entrance gate of the stadium.

Warm Up: Bands will warm up in the parking lots as well as open fields near the front of the school and local church.

Field Surface: The field surface is grass and will have high school hashes.

Power on field: There is a power source by the fifty yard line near the stadium seating.

Competition Suite: Adjudicator commentary for all USBands ensembles can be located in Competition Suite shortly after the conclusion of each ensemble's performance. Directors may grant access to the ensemble's portal with staff/instructors, and may request help from USBands representatives to resolve any issues accessing Competition Suite.

Retreat/Critique: The retreat will be Drum Major only. The critique will take place in the high school faculty lounge, which will also be the Adjudicators' Room. Please see the location on this following map.

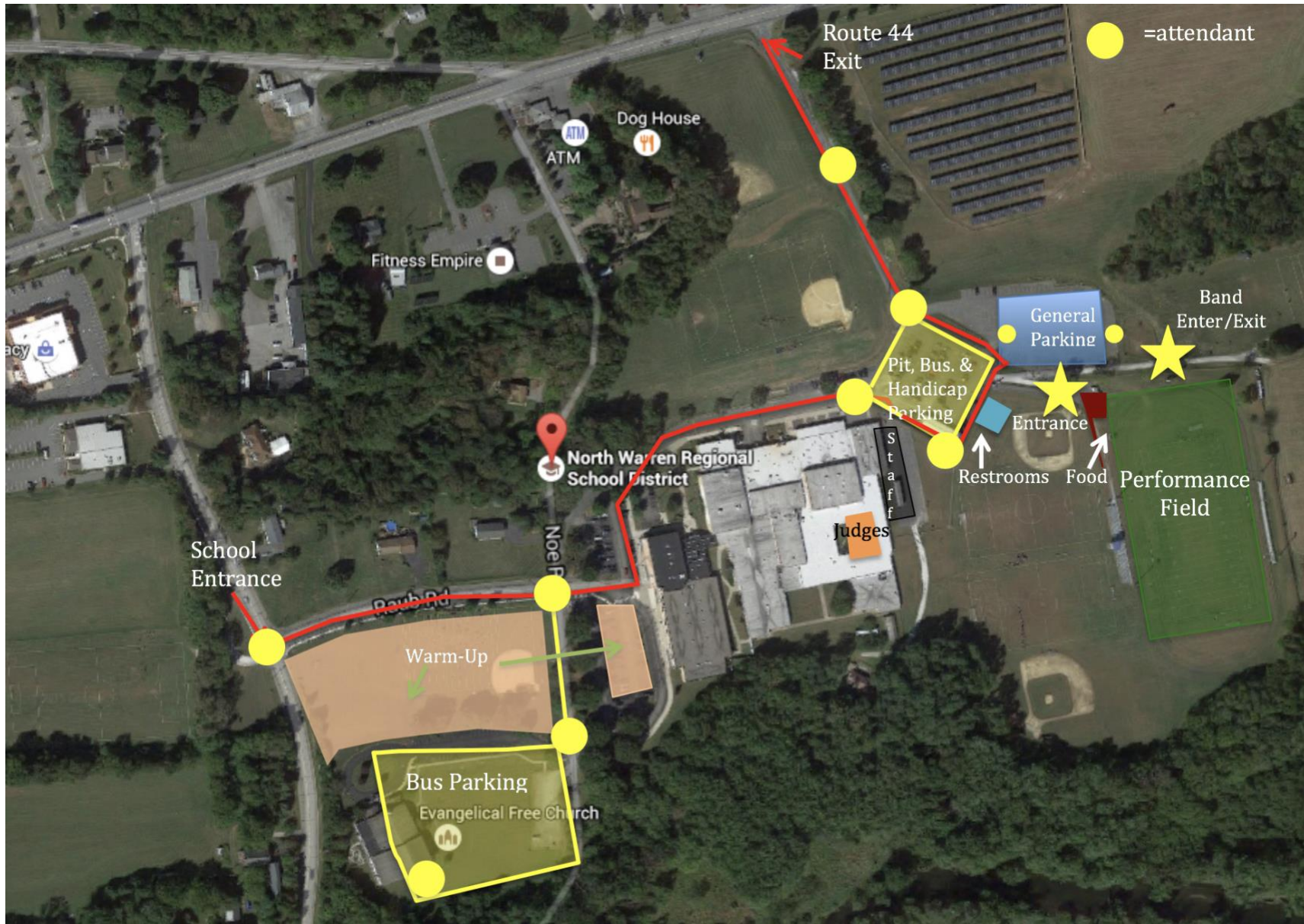
Awards: Trophies will be given out at the awards ceremony.

Souvenirs/Merchandise: Souvenirs and merchandise will be available under the tent next to the stadium seating and concession stand.

Concessions: Concessions will be available at the concession stand, located directly past the admissions both entrance.

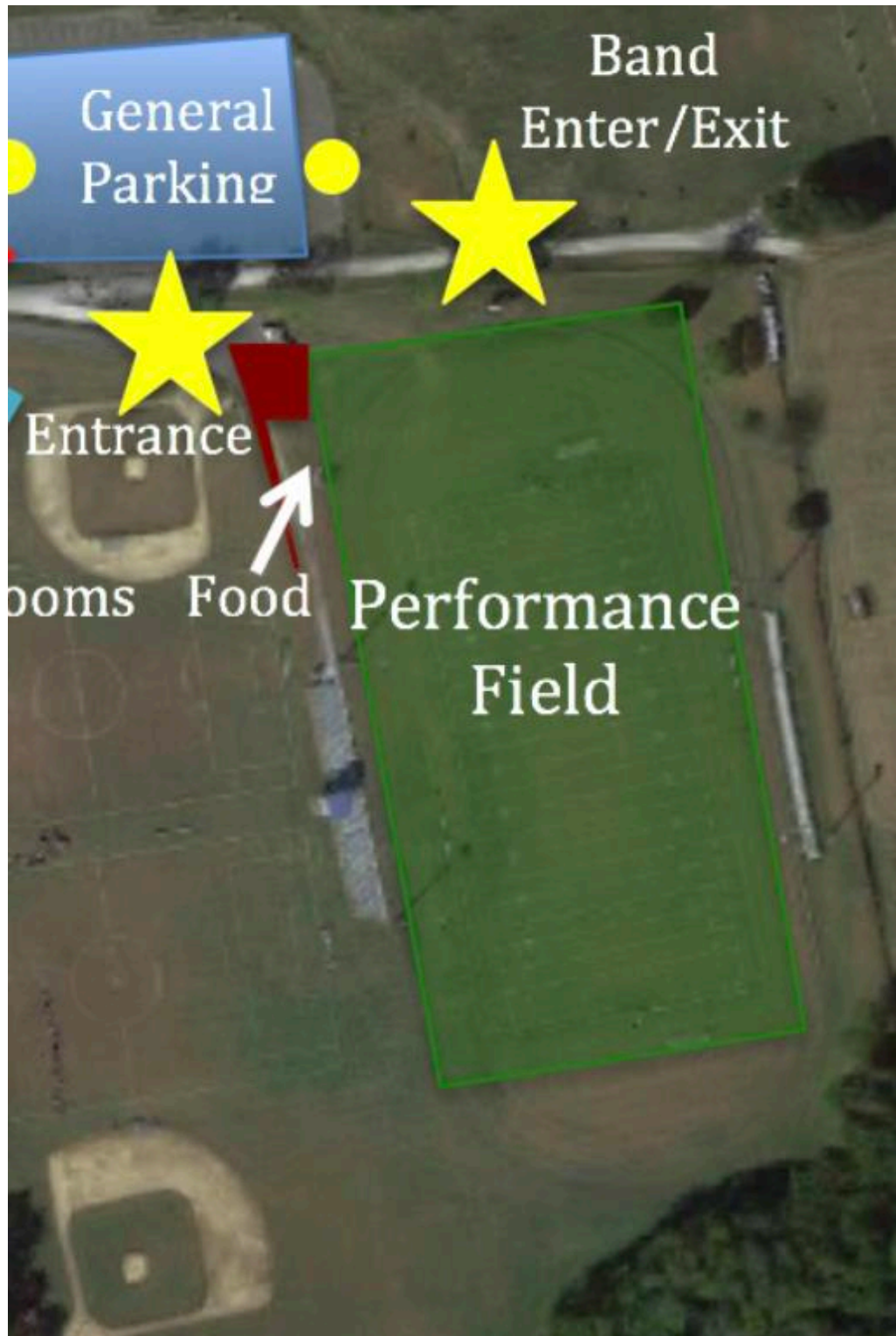
Credentials/Access: Only staff credentials will be allowed in the hospitality room. Only those with USBands Passes will be allowed in the stadium area without paying. No stamps or wristbands will be handed out.

SITE OVERVIEW MAP



ENSEMBLE PARKING & WARMUP







SEVERE WEATHER PLAN

Parking: The buses will park in the parking lot entrance in the front of the school. Volunteers will park in the same lot as the buses. The spectators will park in the back of the school near the football stadium.

Restrooms: Upon arrival, band members can use restrooms inside the school on the side entrance closest to the stadium. For spectators and volunteers, there are 2 porta potties outside the fenced area of the football field. They can also use the restrooms inside the school on the side entrance closest to the stadium. Additionally restrooms will be open throughout the school.

Member Re-Entry: Band members will be identified by their uniforms. They will be allowed into the performance area without paying. No stamps or wristbands will be handed out.

Tickets: Tickets will be purchased at a location prior to the entrance of the gym. A table will be easily identified.

Unloading Area: Unloading will be done behind the school.

Warm-Up: Bands will warm up at different locations within the school building.

Performance Location: The performances will take place in the gymnasium.

Power: There will be multiple power sources available for use in the performance area. There is one located on what would be the 50-yard line in the gym.

Retreat/Critique: The retreat will be Drum Major only. The critique will take place in the high school faculty lounge, which will also be the Adjudicators' Room. Please see the location on this following map.

Souvenirs/Merchandise: Souvenirs and merchandise will be available in the cafeteria.

Concessions: Concessions will be available in the cafeteria.

Credentials/Access: Only staff credentials will be allowed in the hospitality room. Only those with USBands Passes will be allowed in the stadium area without paying. No stamps or wristbands will be handed out.