



## IMPORTANT EVENT INFORMATION

**Parking:** Equipment trucks/trailers will be in Parking Lot #1 closest to the stadium (behind Gym 1). Buses will be parked in a Lot (#2) located in front of Gym. Volunteers will park along the local streets (west Parkway, West End, Washburn Road and Van Dyke Place). Spectators will park along the local streets (west Parkway, West End, Washburn Road and Van Dyke Place).

**Restrooms:** Restrooms are located in 2 locations: next to entrance to the rear of Gym 2 is one set and at the entrance to the front of Gym 1. There will also be a port-o-john located just outside the Pit gate entrance in the parking lot with equipment parking.

**Member Re-Entry:** Band Members, Staff and Volunteers will be given wristbands. Spectators will have their hand stamped. All spectators will be entering through the main gate. Band members, Judges, Volunteers can use the back gate.

**Tickets:** Ticket prices will be \$12 General admission, \$8 for Seniors and \$5 for Students with School ID, Free for children under age 5. Tickets can be purchased near entrance to stadium at visitor entrance.

**Warm Up:** Each band will be assigned 2 student guides. Warm up areas will be located in 7 locations: 2nd turf field (Area A), grounds in front of the school (Area B), School Lot in front of main entrance (Area C), School Lot on the far east of the school (Area D), Northeast corner of School Field (Area D) Church Lot across from the school (Area E), Along the east side of the School field (Area F) and at the southeast corner of the school property (near Kinney Place and Washburn Rd, Area G).

**Field Surface:** Field is artificial turf. High School hashes will be present.

**Power on field:** The Field has power including lights. Power is available in the Press Box as well as an outlet located nearest to the 50-yard line across the track from edge of the actual field (approximately 35 feet from the front sideline).

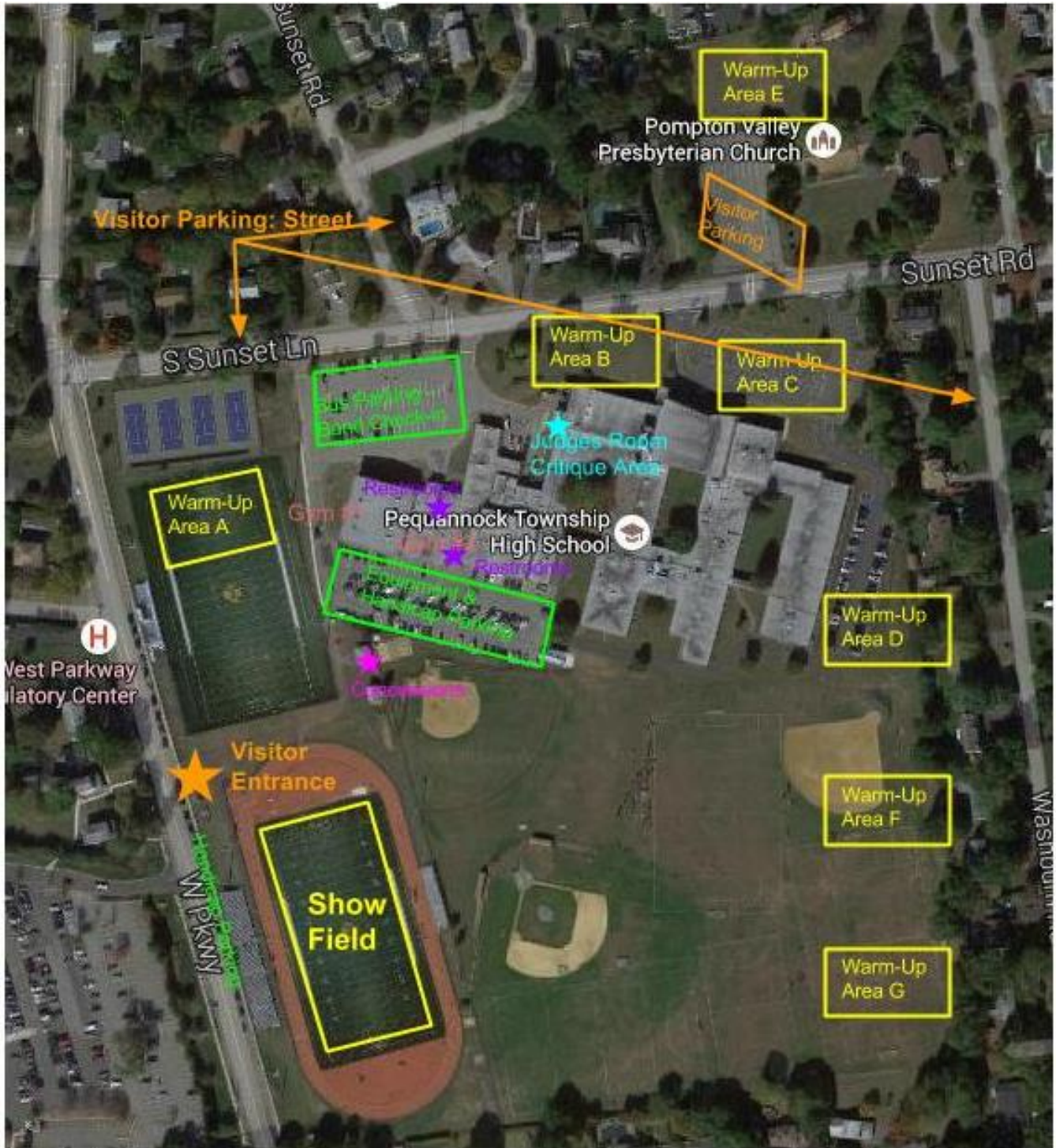
**Competition Suite:** Adjudicator commentary for all USBands ensembles can be located in Competition Suite shortly after the conclusion of each ensemble's performance. Directors may grant access to the ensemble's portal with staff/instructors, and may request help from USBands representatives to resolve any issues accessing Competition Suite.

**Retreat/Critique:** Retreat will be located in the Judges Room (Faculty Dining Room in High School). Signs will be posted. Critique will be located in the Judges Room (Faculty Dining Room in High School). Signs will be posted.

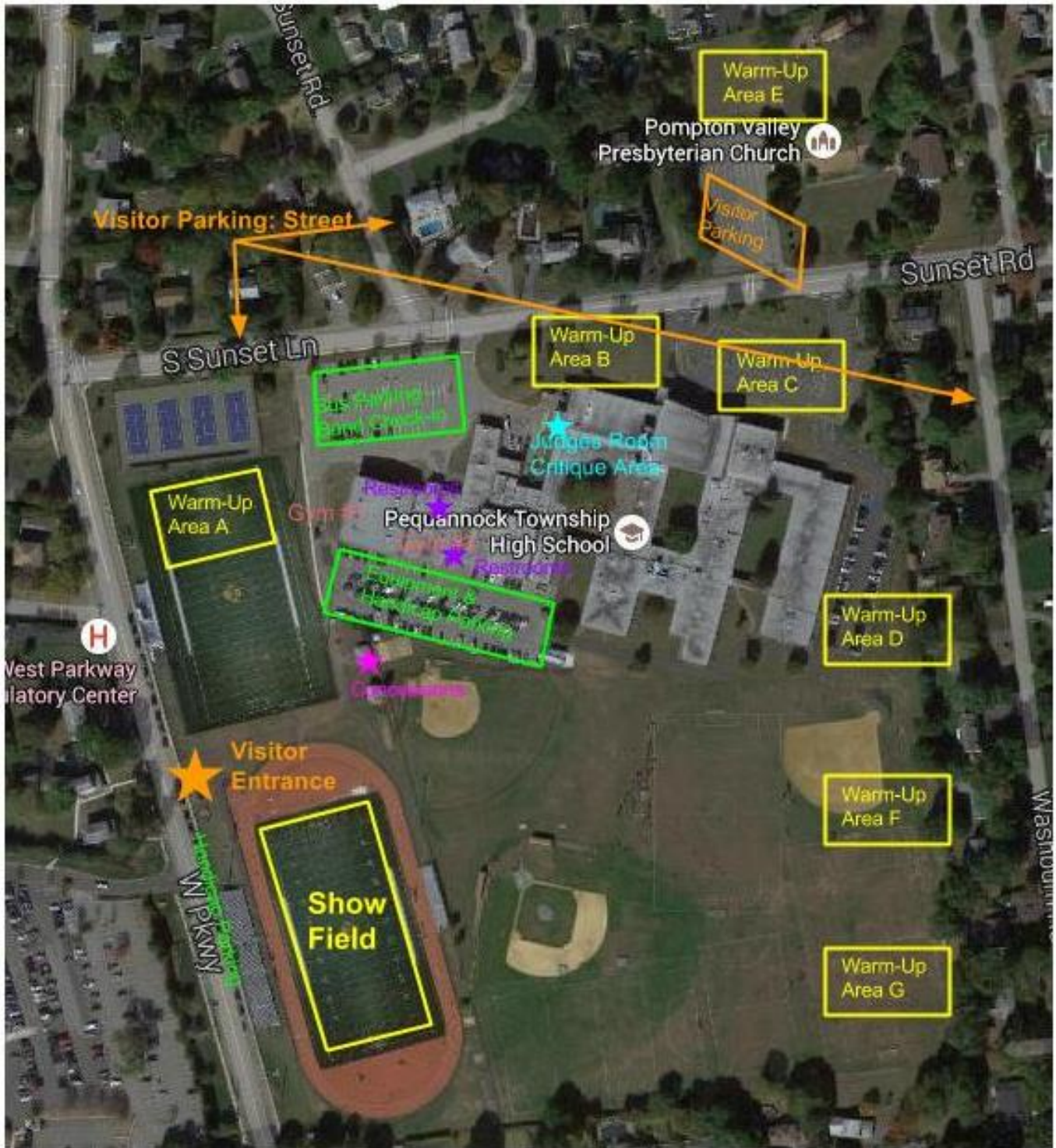
**Souvenirs/Merchandise:** Yes, Misc T-Shirts, pins etc.

**Concessions:** The field contains an outdoor concession stand in the northeast corner of the stadium; this will be in use during the event for the purchase of hot and cold foods and beverages. Additional baked goods and beverages will be available near stands.

**Credentials/Access:** Only judges and staff can enter hospitality room. Wristbands will be provided for performers, Pit Crew and Staff of competing bands.



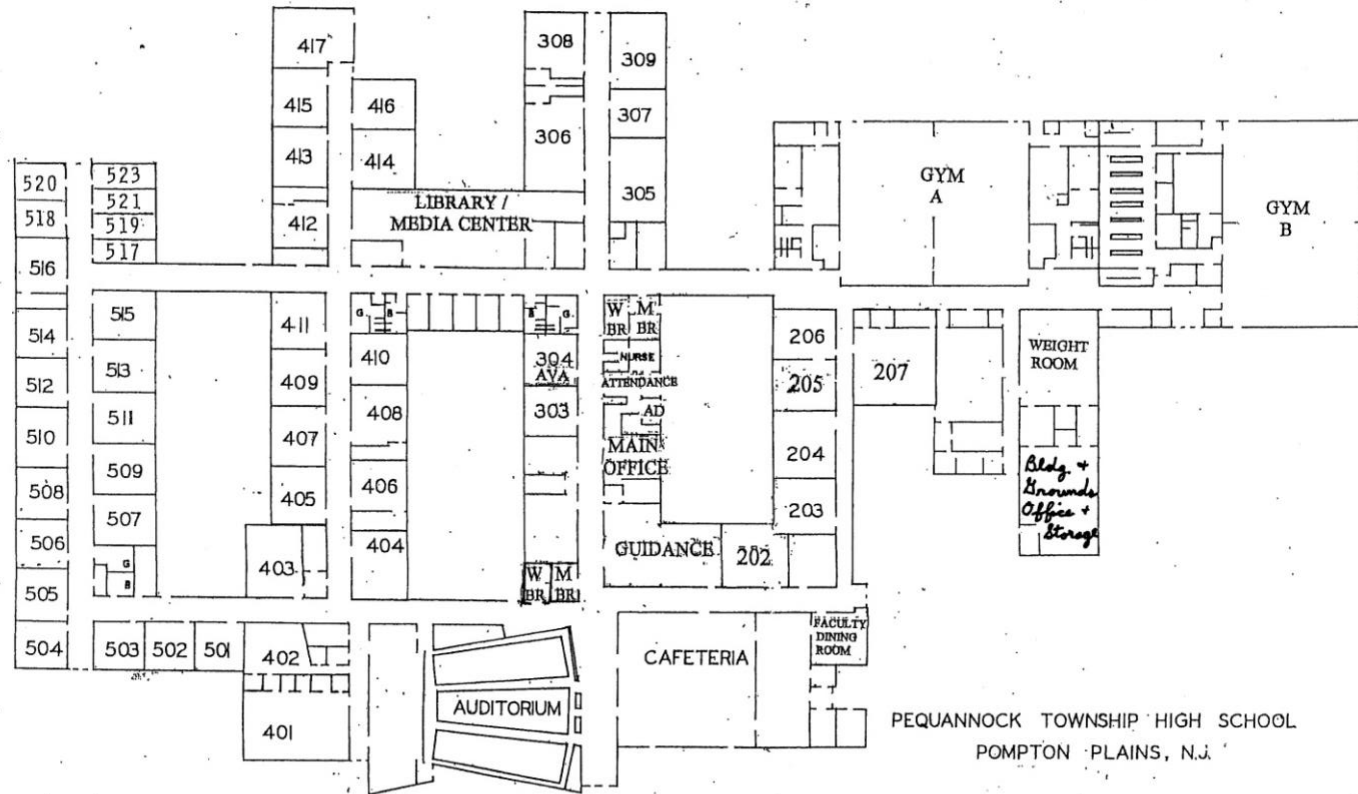








# SEVERE WEATHER MAP



SUNSET ROAD

**Parking:** Equipment trucks/trailers will be Parking Lot #1 closest to the stadium (behind Gym A). Buses will be parked in a Lot (#2) located in front of Gym. Volunteers will park along the local streets (west Parkway, West End, Washburn Road and Van Dyke Place). Spectators will park along the local streets (west Parkway, West End, Washburn Road and Van Dyke Place).

**Restrooms:** Restrooms are located in 2 locations: next to entrance to the rear of Gym 2 is one set and at the entrance to the front of Gym 1. There will also be a port-o-john located just outside the Pit gate entrance in the parking lot with equipment parking.

**Member Re-entry:** Band Members, Staff and Volunteers will be given wristbands. Spectators will have their hand stamped. All spectators will be entering through the main gate. Band members, Judges, Volunteers can use the back gate.

**Warm-up:** Warm Up areas will be provided in the School Hallways, Band Room, the Auditorium and Gym 2. Each individual Band will have a guide.

**Performance Area:** The performance will take place in Gym 1.

**Retreat/Critique:** Retreat will be located in the Judges Room (Faculty Dining Room in High School). Signs will be posted. Critique will be located in the Judges Room (Faculty Dining Room in High School). Signs will be posted

**Tickets:** Tickets prices will be \$12 General admission, \$8 for Seniors and \$5 for Students with School ID, Free for children under age 5. Tickets can be purchased near entrance to stadium at visitor entrance.

**Concessions:** Concessions will be located in the cafeteria.