



Celebration of Sound
Brien McMahon High School
Jack Casagrande Field
300 Highland Avenue
Norwalk, CT 06854
Saturday, September 15, 2018



EVENT HOST CONTACTS

Ron Secchi (director)
(203) 858-5434
Secchir@norwalkps.org

Eileen Secchi
(203) 984-2059
esecchi@scholastic.com

USBANDS CONTACTS

Mike Trehey
(484) 387-1136
mtrehey@usbands.org

Eric James
(484)-387-1142
ejames@usbands.org

Brien McMahon High School
September 15, 2018**Contact:** Ron Secchi**Location:** Brien McMahon High School
300 Highland Ave
Norwalk CT 06854**Schedule (Performance times are subject to change)**

Performance	Class	Unit/Director	Location
5:00 PM	**THIS IS A PRELIMINARY SCHEDULE- SUBJECT TO CHANGE**		
5:00 PM	NATIONAL ANTHEM		
5:05 PM	Group III A	Bethel High School (CT) Manny Arboleda	Bethel CT
5:20 PM	Group III A	Westhill High School Michael Wyatt	Stamford CT
5:35 PM	Group V A	Bunnell-Stratford High School Jim Miller	Stratford CT
5:50 PM	Group VI A	New Milford High School (CT) David Syzdek	New Milford CT
6:05 PM	INTERMISSION		
6:35 PM	Group IV Open	Newtown High School Kurt Eckhardt	Sandy Hook CT
6:50 PM	Group V Open	Naugatuck High School Robert Hughes	Naugatuck CT
7:05 PM	Group VI Open	Trumbull High School Peter Horton	Trumbull CT
7:20 PM	Group VI Open	Norwalk High School Chris Rivera	Norwalk CT
7:35 PM	Judged Exhibition (V A)	Brien McMahon High School Ron Secchi	Norwalk CT
7:50 PM	AWARDS		

Brien McMahon High School
September 15, 2018**Contact:** Ron Secchi**Location:** Brien McMahon High School
300 Highland Ave
Norwalk CT 06854**Adjudicators**

Position	Name
Fall 1.1 Chief Adjudicator	Todd James (Oklahoma City, OK)
Fall 1.1 - Music Individual 1	Patrick Garrett (Glen Dale, WV)
Fall 2.1 - Music Ensemble 1	Ronald Fussell (Omaha, NE)
Fall 3.1 - Visual Performance 1	David Caravella (Paramus, NJ)
Fall 4.1 - Overall Effect 1	Todd James (Oklahoma City, OK)

Staff

Position	Name
1.1 - Event Coordinator	Kevin Hassan (Stamford, CT)
2.1 - Assistant Event Coordinator	Bill Flaker (Manchester, CT)
3.1 - Tabulator	Linda Flaker (Manchester, CT)



IMPORTANT EVENT INFORMATION

Arrival: Busses and Trucks will be arriving via Highland Avenue. BMHS personnel and signs will indicate entrance areas

Parking: Busses will first drop off students at Brookside Elementary School. After all students are dropped off, busses will go directly to BMHS and park on the side parking lot next to the tennis courts. Volunteers will park in front of the school in a specific parking lot/section. Spectators will park right in front of the school. Once the front parking lot reaches full capacity, spectators will be directed to Roton Middle School parking lot down the street and will then be shuttled to and from Brien McMahon High School

Restrooms: Upon arrival, members may use the restrooms at the drop-off area (Brookside Elementary School). Volunteers may use the restrooms in the BMHS Sports Complex as well as BMHS. Spectators may use the restrooms in the BMHS Sports Complex as well as BMHS.

Member Re-entry: Students will be allowed back into the sports complex as long as their hands were stamped when they first came off the bus at Brookside School.

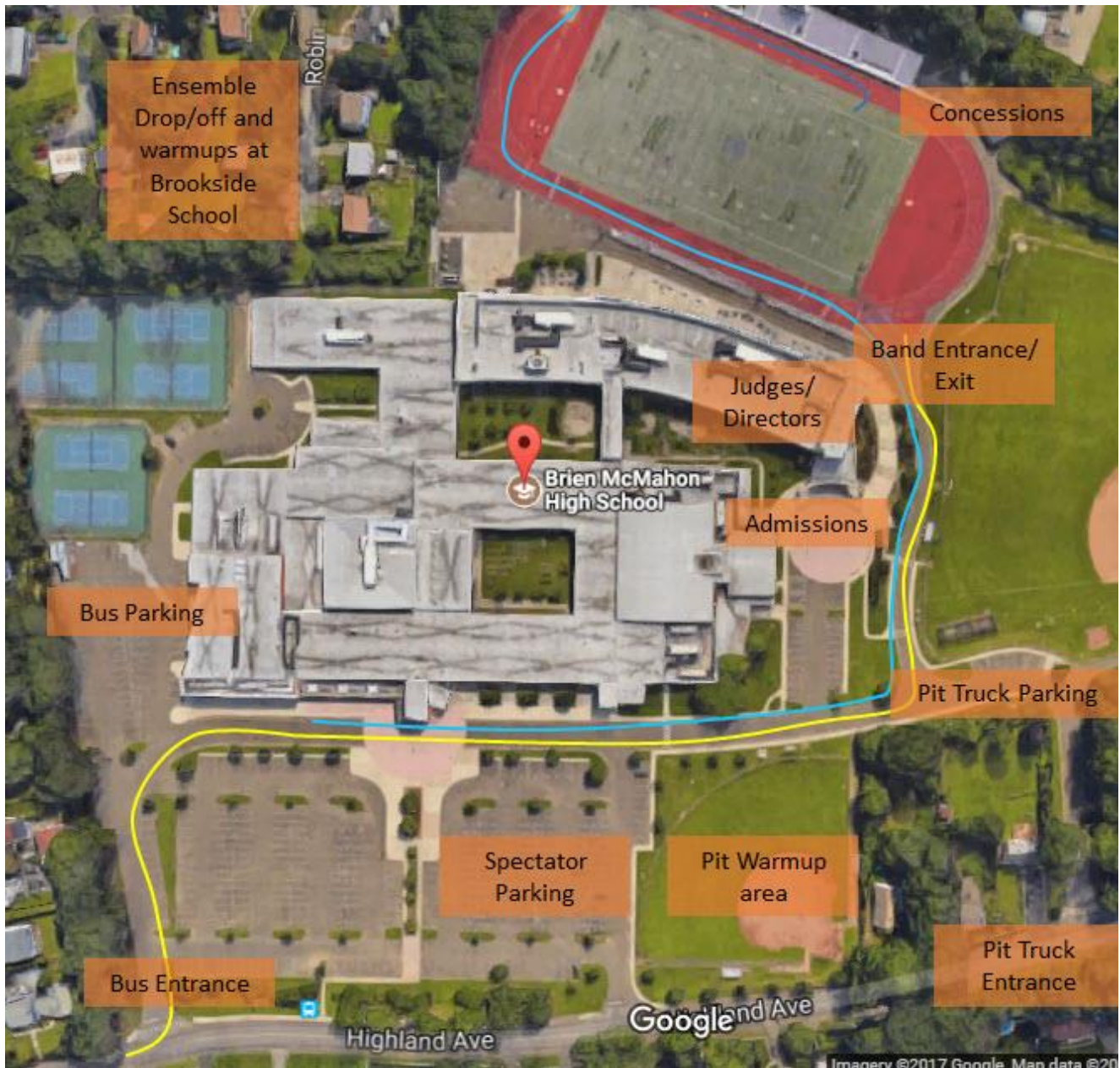
Warm-up: Bands will warm up Behind Brookside Elementary School. There will be guides to lead the bands from location to location.

Field surface: The field is artificial turf and will have high school hashes.

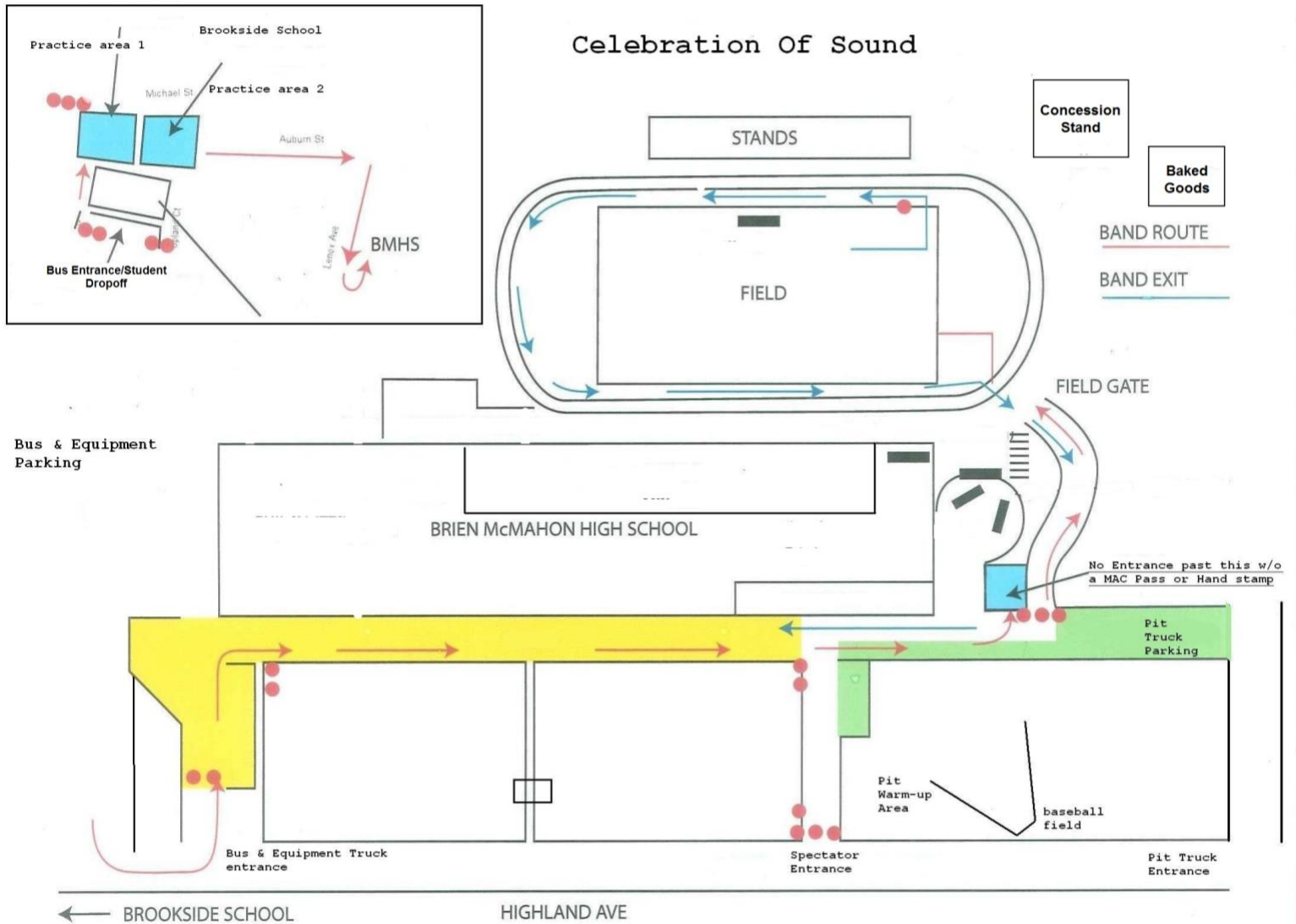
Retreat/Critique: Retreat will be drum majors only. Report to the scoreboard before the final band performs. Critique will be held in the adjudicators' room, which will be right next to the field entrance.

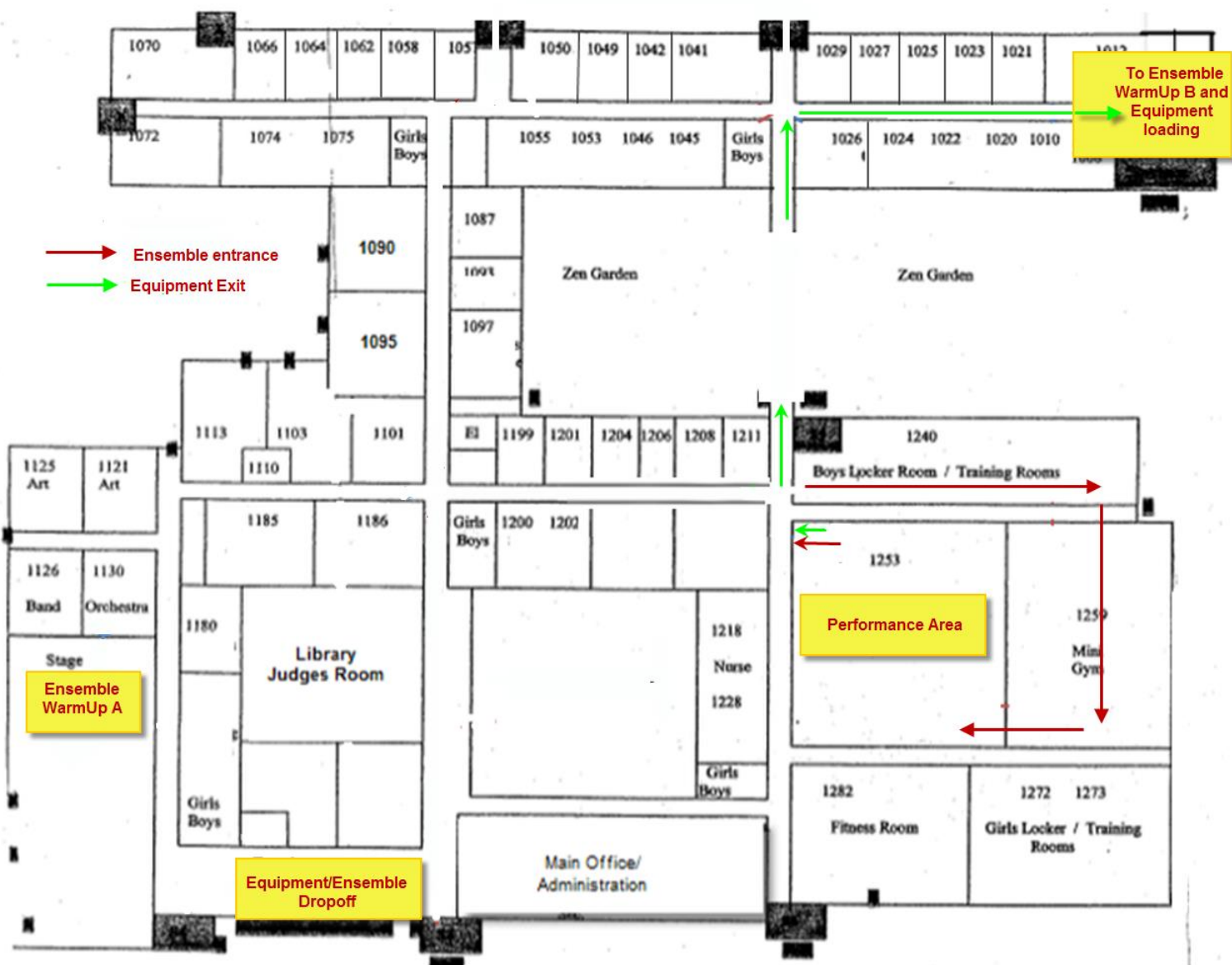
Tickets: Tickets will be \$12 for adults and \$7 for students and seniors. These can be purchased at the top of the stairs leading down to the field.

Concessions: Concessions will be sold at the concessions stand, which is located right next to the stands.



— Band Route
— Band Exit







SEVERE WEATHER PLAN

Arrival: Busses and Trucks will be arriving via Highland Avenue. BMHS personnel and signs will indicate entrance areas

Parking: Busses will first drop off students at main entrance to Brien McMahon High School. After all students are dropped off, busses will go directly to BMHS and park on the side parking lot next to the tennis courts. Volunteers will park in front of the school in a specific parking lot/section. Spectators will park right in front of the school. Once the front parking lot reaches full capacity, spectators will be directed to Roton Middle School parking lot down the street and will then be shuttled to and from Brien McMahon High School

Restrooms: Upon arrival, members may use the restrooms at the drop-off area . Restrooms are also available near ensemble warmup areas and immediately outside the gymnasium.

Member Re-entry: Students will be allowed back into the sports complex as long as their hands were stamped when they first came off the bus at Brookside School.

Warm-up: Bands will warm up in either the auditorium or in the Center for Global Studies community room. There will be guides to lead the bands from location to location.

Retreat/Critique: Retreat will be drum majors only. Report to the mini-gym after the last group has performed.

Tickets: Tickets will be \$12 for adults and \$7 for students and seniors. These can be purchased at the top of the stairs leading down to the field.

Concessions: Concessions will be sold in the cafeteria, located on the first floor of the building. Signs will be posted indicating directions to the cafeteria.