



Robbinsville Rhapsody

Robbinsville High School
155 Robbinsville-Edinburg Road
Robbinsville, NJ 08691
Saturday, September 29th, 2018



EVENT HOST CONTACTS

Birch Wilson (Director)
(609) 575-2059
wilson@robbinsville.k12.nj.us

USBANDS CONTACTS

Mike Trehey
(484)-387-1136
mtrehey@usbands.org

Eric James
(484)-387-1142
ejames@usbands.org



Order of Performance

EVENT SCHEDULE WILL BE ENTERED HERE



Adjudication Panel and Event Staff

Adjudicators

- Music Individual –**
- Music Ensemble –**
- Visual Performance –**
- Overall Effect –**
- Color Guard –**
- Percussion –**

* - Chief Adjudicator

Event Staff

- Event Coordinator –**
Coordinator contact –

Assistant Coordinator –

Tabulator –



Important Event Information

Parking: Buses will park at Pond Road Middle School (150 Pond Rd., Robbinsville, NJ 08691). Volunteers and spectators will park at Robbinsville High School (155 Robbinsville-Edinburg Rd., Robbinsville, NJ 08691).

Restrooms: Restrooms for band members are located in the main entrance of Pond Middle School. Volunteers can use the restrooms inside the main entrance of Pond Middle School, or outside at the Stadium. There are porta-pottys located at the Stadium.

Member Re-Entry: Band members will receive a hand stamp. When entering the stadium, members can enter through the band entrance gate behind the home stands.

Tickets: Tickets to the event will be \$10, and can be purchased at the gate by the visitors' stands.

Warm Up: Bands will be warming up at the fields behind Pond Road Middle School.

Field Surface: The field is artificial turf, and has high school hashes.

Power on field: There will be a power source located near the 50 yard line.

DropBox: Adjudicator commentary for all USBands can be located via DropBox, shortly after the conclusion of each ensemble's performance. Directors may share this folder access with staff/instructors, and may request help from USBands representatives to resolve any issues accessing DropBox folders.

Retreat/Critique: For the retreat, drum majors should report to the track by the scoreboard before the final band. The critique will take place in the culinary arts room, located in the front hallway of the high school. This can be accessed through the back doors of the high school.

Awards: Trophies will be given out for overall placement and participation. Framed certificates will be given out for caption awards.

Souvenirs/Merchandise: Souvenirs and merchandise will be available by the home stands.

Concessions: Concessions will be located near the home stands.

Credentials/Access: Inside the high school building and hospitality room, staff credentials are required. Hand stamps and staff credentials are allowed inside the middle school for bathrooms and through band entrance gate.

Robbinsville High School

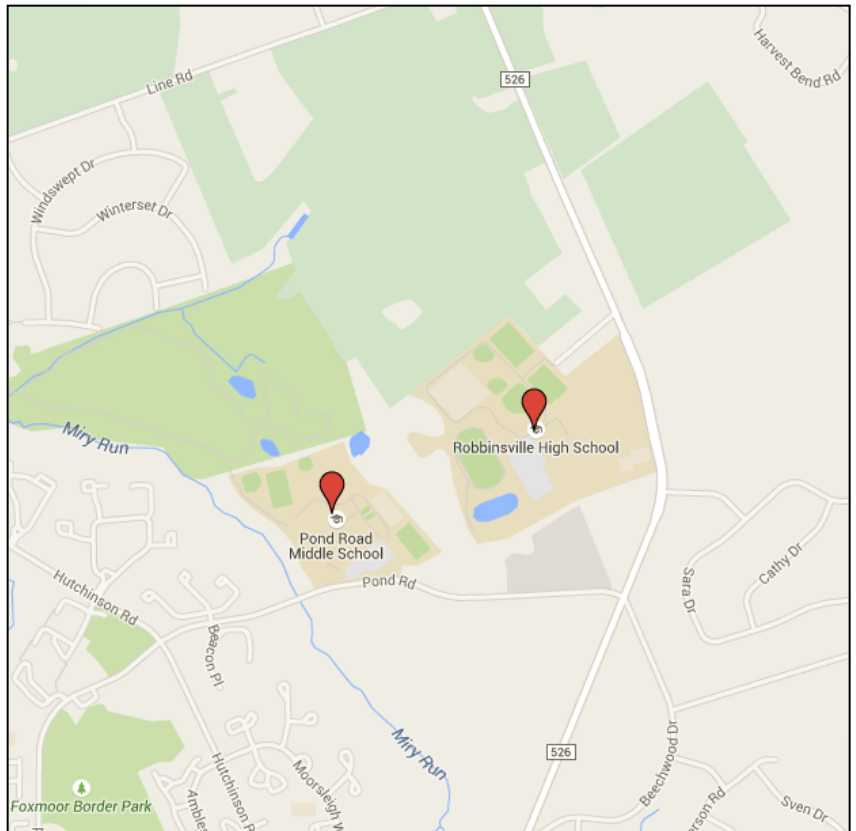
155 Robbinsville-Edinburg Road
Robbinsville, NJ 08691

From the North:

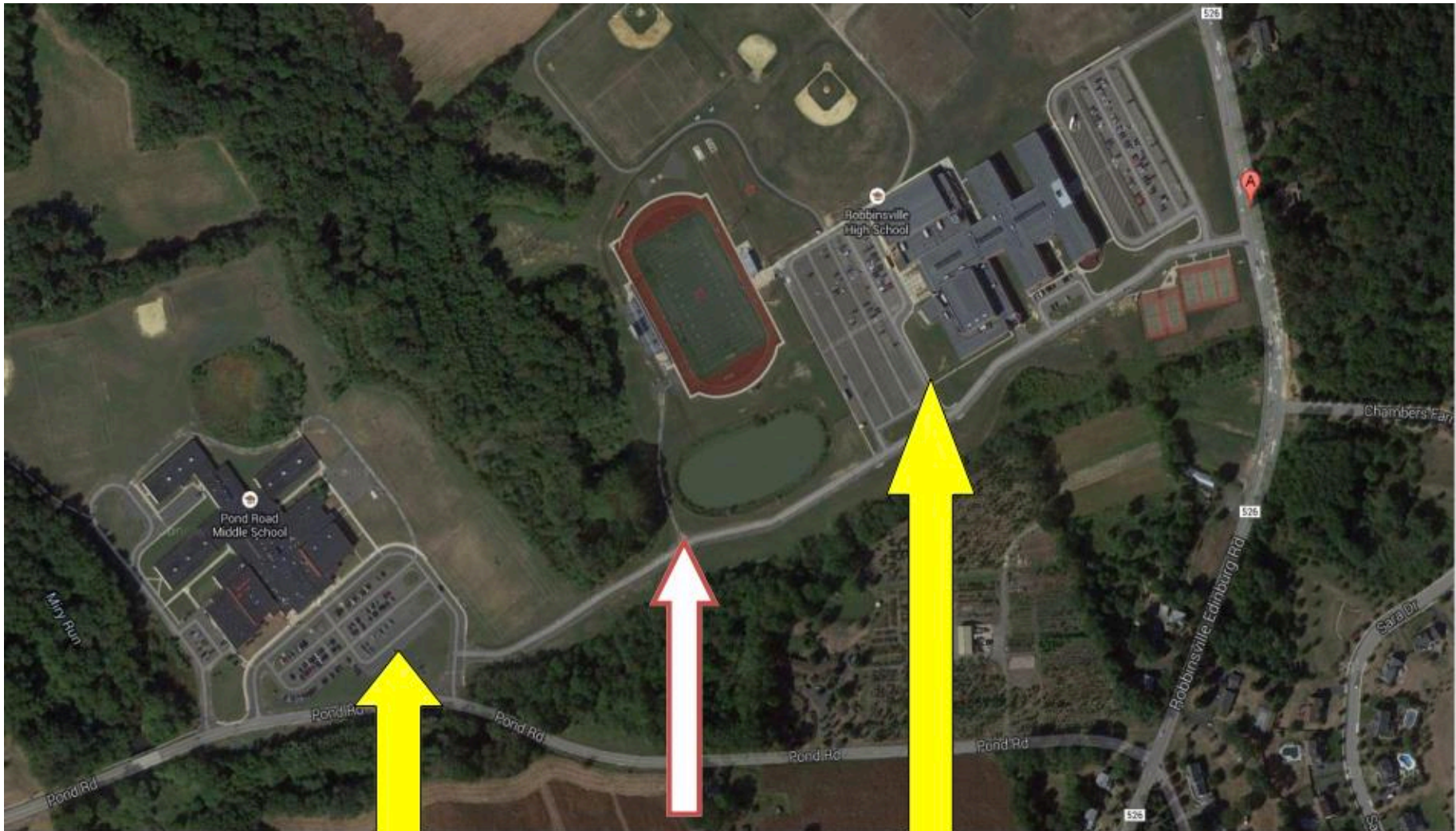
Take NJ turnpike South to exit 7A. Take 195 West to exit 5 (Rt. 130 N). Go through the second traffic light and take the jug handle located on the right hand side (sign reads "All Turns"). Cross over Rt. 130. At the next traffic light, make a right hand turn onto Robbinsville-Edinburg Rd. (County Rt. 526). At the next traffic light, make a left onto Pond Rd for busses and equipment, or go straight and Robbinsville High School will be about a half mile up on your left hand side.

From the South:

Take NJ turnpike North to exit 7A. Take 195 West or take 295 North to 195 East. Take 195 to exit 5 (Rt. 130 N). Go through the second traffic light and take the jug handle located on the right hand side (sign reads "All Turns"). Cross over Rt. 130. At next traffic light make a right hand turn onto Robbinsville-Edinburg Rd. (County Rt. 526). At the next traffic light, make a left onto Pond Rd for busses and equipment, or go straight and Robbinsville High School will be about a half mile up on your left hand side.



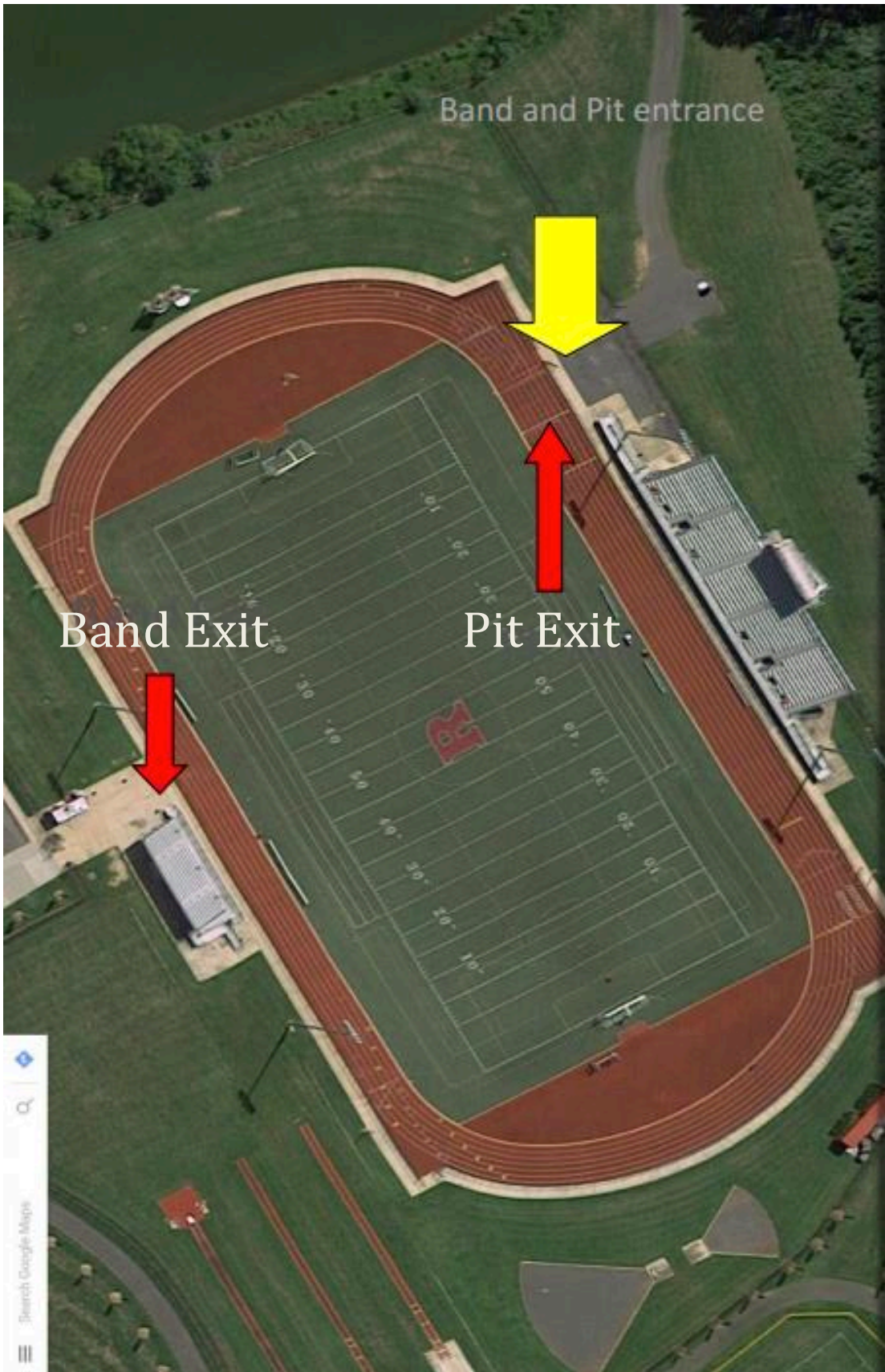
Band Parking and Warm-Up Areas



Equipment vehicles and buses please go to
Pond Rd. Middle School @ 150 Pond Rd.
Robbinville, NJ 08691

Bands and Equipment will
follow this access road to
reach the stadium.

Spectators should go directly to Robbinville High School@
155 Robbinville-Edinburg Rd. Robbinville, NJ 08691
Hospitality room for all band staff is directly through the back
doors.



Rain Plan Event Information

Parking: Busses will unload equipment and disembark students in front of Robbinsville High School. Then buses will be directed to either park in front of Robbinsville H.S. or be directed to relocate to Pond Road Middle School (150 Pond Rd. Robbinsville, NJ 08691). Volunteers and spectators can park at Robbinsville High School.

Restrooms: Upon entry, band members can use the restrooms in the front hallway of Robbinsville High School. Restrooms for spectators and volunteers are located near the commons area in the rear of the school.

Member Re-Entry: Band members will receive hand stamps.

Tickets: Tickets can be purchased at the ticket table located at the rear entrance of RHS.

Unloading Area: Bands can unload at the front entrance of RHS. No loading dock or ramps are available. The bar can be removed from center of doorways to accommodate larger equipment.

Warm-Up: Bands will warm up in either the Band Room (E104), Black Box Theater (E10), or the auditorium. All color guards will warm up in the Auxiliary Gym. Pits will warm up in the hallways located in the front half of the building where equipment is also stored. Batteries may warm up with Pits or with Horn Line.

Performance Location: The performances will take place in the main gym.

Power: A power source will be available at half court line on the sideline.

Retreat/Critique: Drum majors should report to the hallway immediately outside the gym before the final band. Critique is located in the Culinary Arts room located in the front hallway of RHS.

Souvenirs/Merchandise: Tables will be set up in the commons area.

Concessions: Concessions will be located in the commons area.

Credentials/Access: Only staff credentials can enter the hospitality room. Hand stamps and staff credentials can enter the front half of the building and warm-up areas.