



Bethel's Quest for the Best

Bethel High School
300 Whittlesey Drive
Bethel, CT 06095
Saturday, September 8th, 2018



EVENT HOST CONTACTS

Manny Arboleda
(203) 641-8386
arboleda003@gmail.com

USBANDS CONTACTS

Mike Trehey
(484)-387-1136
mtrehey@usbands.org

Eric James
(484)-387-1142
ejames@usbands.org

**Bethel High School
September 08, 2018**

Contact: Manny Arboleda
Location: Bethel High School
 300 Whittlesey Dr
 Bethel CT 06801

**Schedule (Performance times are subject to change)**

Performance	Class	Unit/Director	Location
6:00 PM	THIS IS THE FINAL SCHEDULE		
6:00 PM	NATIONAL ANTHEM		
6:05 PM	Group II A	Danbury High School Edward Adams	Danbury CT
6:20 PM	Group II A	New Fairfield High School Deanna Rivers	New Fairfield CT
6:35 PM	Group IV Open	Newtown High School Kurt Eckhardt	Sandy Hook CT
6:50 PM	Group IV Open	Blackstone-Millville High School Todd Shafer	Blackstone MA
7:05 PM	Group V Open	Naugatuck High School Robert Hughes	Naugatuck CT
7:20 PM	INTERMISSION		
7:50 PM	Group VI A	New Milford High School (CT) David Syzdek	New Milford CT
8:05 PM	Judged Exhibition (III A)	Bethel High School (CT) Manny Arboleda	Bethel CT
8:20 PM	Exhibition	Sacred Heart University Keith Johnston	Fairfield CT
8:35 PM	AWARDS		

Bethel High School
September 08, 2018

Contact: Manny Arboleda
Location: Bethel High School
300 Whittlesey Dr
Bethel CT 06801

**Adjudicators**

Position	Name
Fall 1.1 Chief Adjudicator	Judy Ulchinsky (Branchville, NJ)
Fall 1.1 - Music Individual 1	Jason Varga (Schenectady, NY)
Fall 2.1 - Music Ensemble 1	Rich Guillen (Poughkeepsie, NY)
Fall 3.1 - Visual Performance 1	Thomas Beresford (Poughquag, NY)
Fall 4.1 - Overall Effect 1	Judy Ulchinsky (Branchville, NJ)

Staff

Position	Name
1.1 - Event Coordinator	Kevin Hassan (Stamford, CT)
2.1 - Assistant Event Coordinator	Bill Flaker (Manchester, CT)
3.1 - Tabulator	Linda Flaker (Manchester, CT)



IMPORTANT EVENT INFORMATION

Parking: Spectator parking is available at Berry School and in the lot directly across from the football field opposite the grandstand. Overflow parking is available at Johnson School and Rockwell School. Check-in, student drop-off and instrument unloading will take place in front of Bethel Middle School, 600 Whittlesey Drive, Bethel, CT. Pit equipment will not be unloaded at Bethel Middle School. Once students and instruments are dropped off, pit trucks will move to the parking lot behind the high school and buses will move to the front of the high school. Drivers should follow directions provided onsite by traffic control volunteers.

Restrooms: Restrooms are available at the student drop-off point for anyone getting off the bus. Portable restrooms are available near the stadium for spectator use. Authorized staff members (staff with USBands credentials) will have access to the restrooms in the high school.

Member Re-Entry: All students coming off the bus will be stamped. Bus drivers will be stamped as well. Chaperones, who ride the bus will be stamped as well. All other staff members without a valid USBands pass will need to pay the appropriate fee. Anyone without a valid USBands pass will not be admitted into the competition.

Tickets: The tickets can be purchased at the main gate.

Warm Up: Warm-up areas are located in various areas at the middle school. Adult and student escorts will direct each to their assigned area.

Field Surface: The field is a grass field lined with high school hash marks.

Power on field: The extension cord for power will be located at the 50 on the front side.

Competition Suite: Adjudicator commentary for all USBands ensembles can be located in Competition Suite shortly after the conclusion of each ensemble's performance. Directors may grant access to the ensemble's portal with staff/instructors, and may request help from USBands representatives to resolve any issues accessing Competition Suite.

Retreat/Critique: While Bethel is performing, all drum majors and student leaders should meet at the scoreboard for further instructions. Critique will take place after the final performance in Bethel High School in the teacher's lounge.

Awards: Trophies will be given for placement and certificates will be given for caption awards.

Souvenirs/Merchandise: Various vendors will be available for you to see.

Concessions: Concessions will be located at the main stadium.

Credentials/Access: Only staff members with USBands passes are allowed in the high school. No visiting students are allowed in the school at any time.



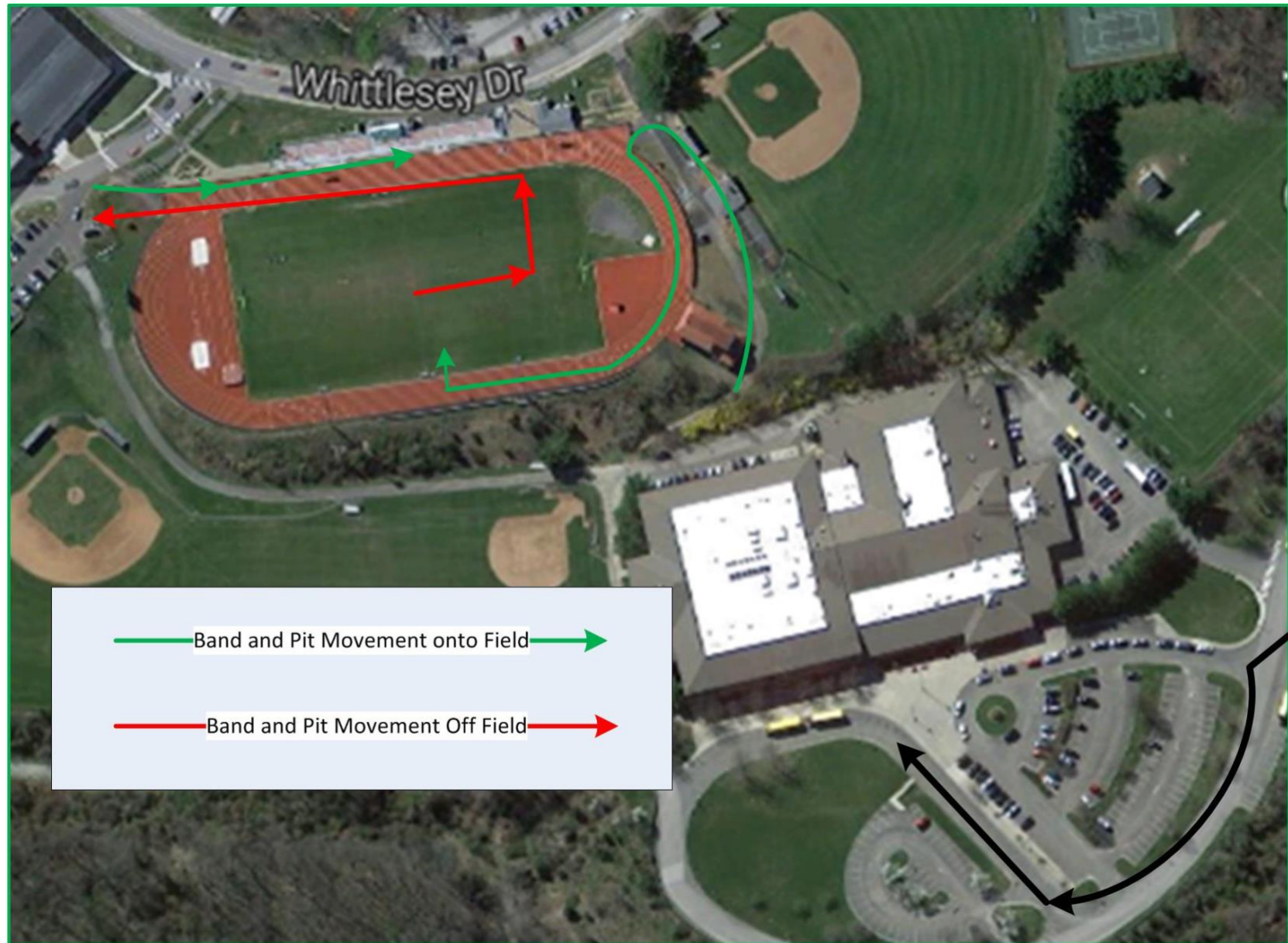
Bethel Middle School Flagpole
Band Check-in,
Student and Student Instrument Dropoff

Do not unload pit instruments here!

- A** Warm-up Area A
- B** Warm-up Area B
- C** Warm-up Area C
- D** Overflow (Early Arrivals)
- E** Pit Truck Parking and Loading
- F** School Bus Parking



- Bethel Middle School Flagpole**
 Band Check-in,
 Student and Student Instrument Dropoff
 Do not unload pit instruments here!
- A** Warm-up Area A
 - B** Warm-up Area B
 - C** Warm-up Area C
 - D** Overflow (Early Arrivals)
 - E** Pit Truck Parking and Loading
 - F** School Bus Parking



Parking: Please see the attached map for information on parking (same as the standard plan).

Restrooms: Restrooms are located throughout the school.

Member Re-Entry: Hands will be stamped for re-entry to the stadium.

Tickets: Tickets can be purchased at the ticket booth outside of the stadium.

Unloading Area: Equipment trucks will enter the parking lot located closest to the stadium. There will be signs for truck parking.

Warm-Up: Ensembles will warm up in classrooms throughout the school.

Performance Location: Performances will take place in the gym.

Power: There will be a power source located in the gymnasium.

Retreat/Critique: Retreat will be in the gym. Critique will be in the adjudicators' room, room 004.

Concessions: Concessions will be available in the cafeteria.

Credentials/Access: Only adjudicators with USBands credentials will be allowed to enter the hospitality room.