



## Magic Valley Classic

Burley High School  
2100 Parke Ave.  
Burley, ID 83318  
Nov. 3 2018



### EVENT HOST CONTACTS

Tim Wood  
(208) 819-9292  
wootimot@cassiaschools.org

### USBANDS CONTACTS

Mike Trehey  
(484)-387-1136  
mtrehey@usbands.org

Eric James  
(484)-387-1142  
ejames@usbands.org

**THIS PAGE WILL BE  
COMPLETED BY  
USBANDS**

**THIS PAGE WILL BE  
COMPLETED BY  
USBANDS**



## IMPORTANT EVENT INFORMATION

**Parking:** Buses will be directed to unloading and parking areas. Equipment vehicles will follow buses. Volunteer parking is in near the HS Building between Skaggs Event Center and the HS. Spectator Parking will be in Skaggs Event Center Lot. No Charge for Parking

**Restrooms:** Restrooms are provided for spectators, band members and volunteers near the concession stand.  
(USBands staff and judges may use the facilities in the HS building if necessary).

**Member Re-Entry:** All band members, staff and spectators will receive a hand stamp for re-entry.

**Tickets:** Tickets are \$10.00 at the gate.

**Warm Up:** Student guides will accompany bands to Warm-up areas in front of the HS building. They will then guide bands to the staging area and to the performance field.

**Field Surface:** The performance venue is turf with HS hashes. Every effort has been made to remove obstacles from entry and exit locations. There are speed bumps in the parking lot that props and pit instruments may need to negotiate.

**Power on field:** Power is provided on both the Home and Visitor side of the field at the 50 Yd sideline.

**Competition Suite:** Adjudicator commentary for all USBands ensembles can be located in Competition Suite shortly after the conclusion of each ensemble's performance. Directors may grant access to the ensemble's portal with staff/instructors, and may request help from USBands representatives to resolve any issues accessing Competition Suite.

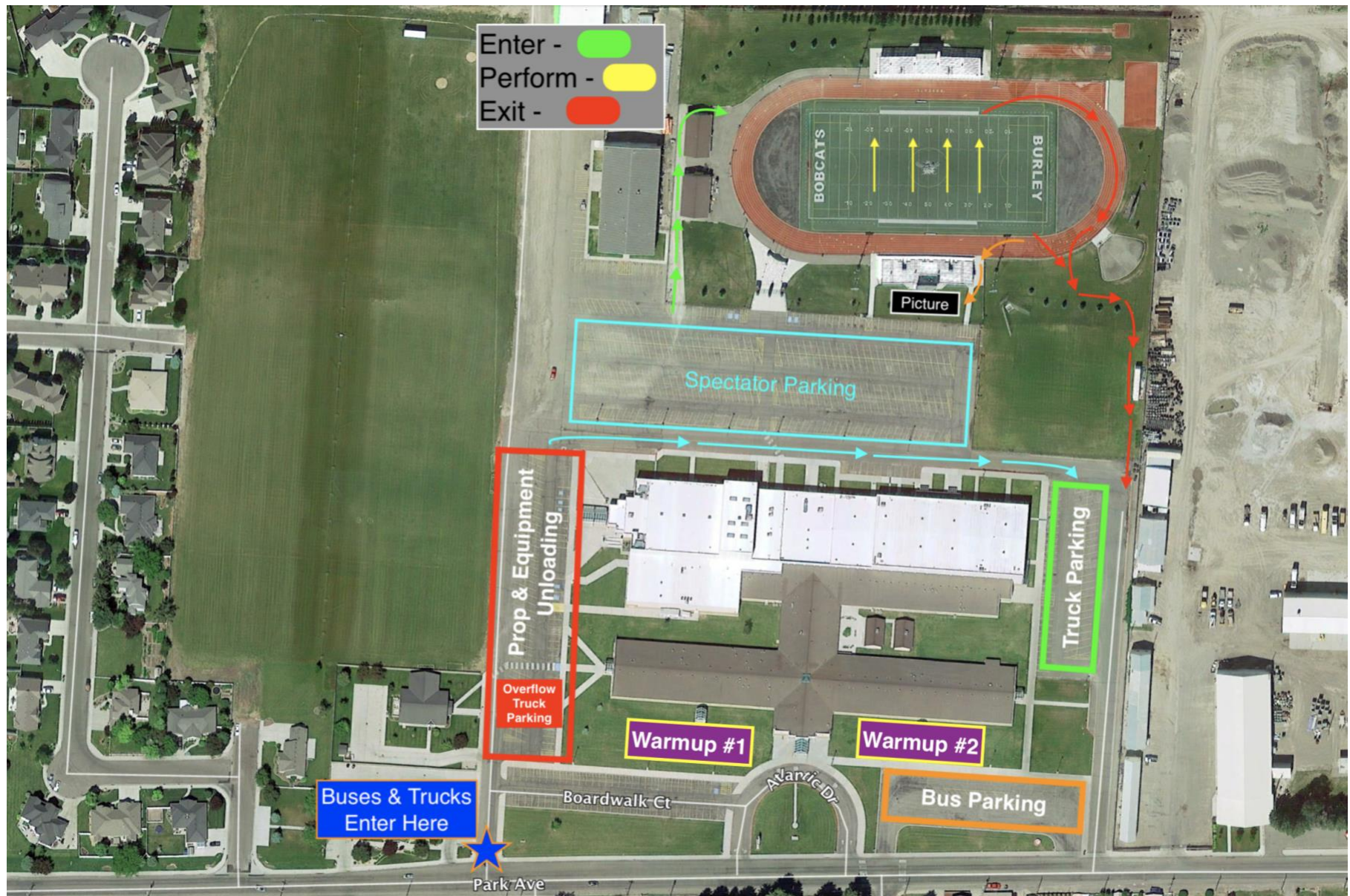
**Retreat/Critique:** Drum Majors and division captains may report to the entry endzone for retreat. We have the library reserved for critique. Sufficient tables and chairs are available.

**Awards:** Trophies will be presented for 1<sup>st</sup>, 2<sup>nd</sup>, 3<sup>rd</sup> place in each class, and for caption awards.

**Souvenirs/Merchandise:** Souvenirs are not scheduled for this year.

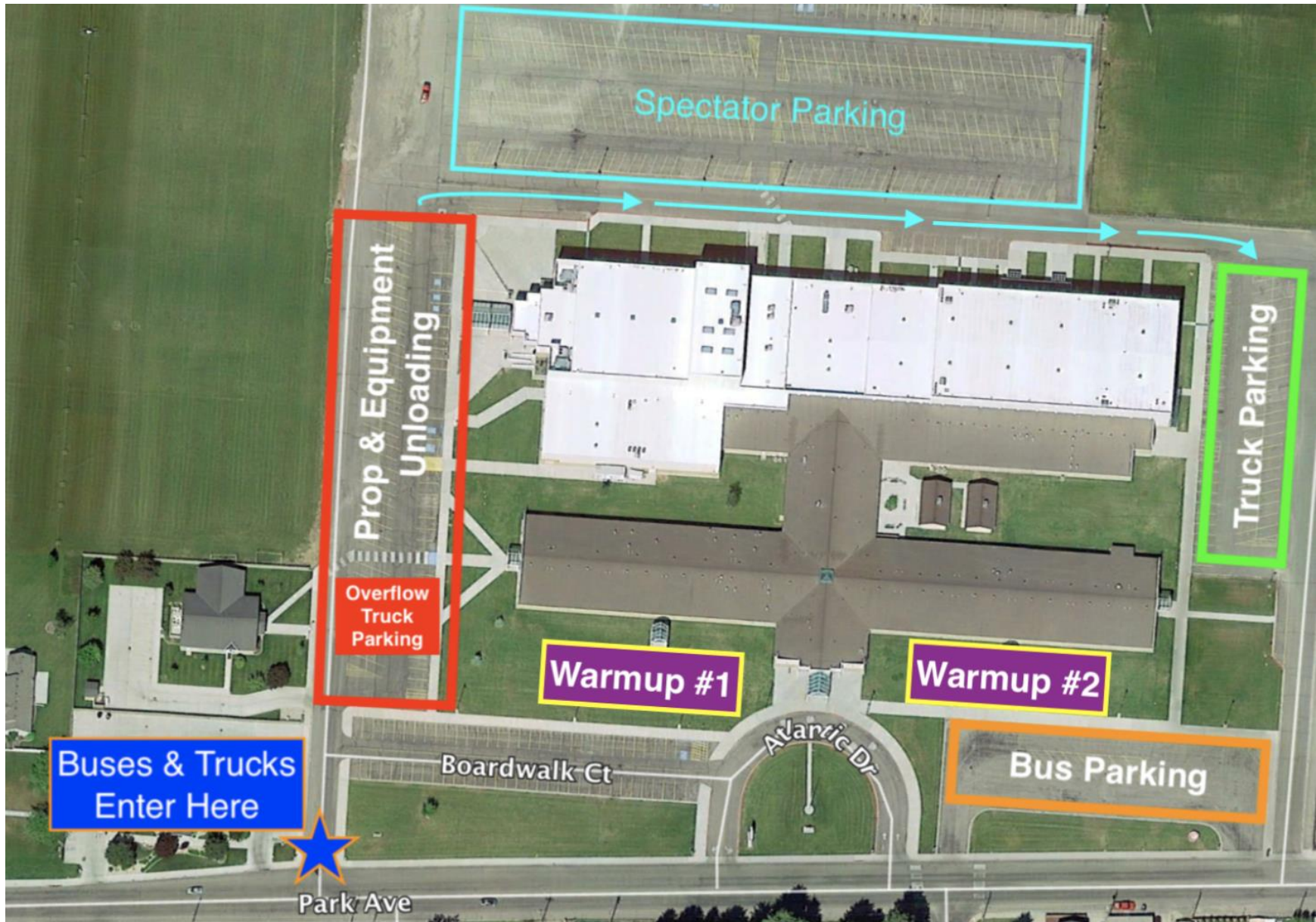
**Concessions:** Concessions will be outdoors in the concession building.

**Credentials/Access:** USBands Credentials will admit the wearer to any and all locations for the event. Students and spectators will receive stamps or marks at the bus or gate and will be granted access to the event center. The hospitality room and critique areas will be available to those with USBands credentials.

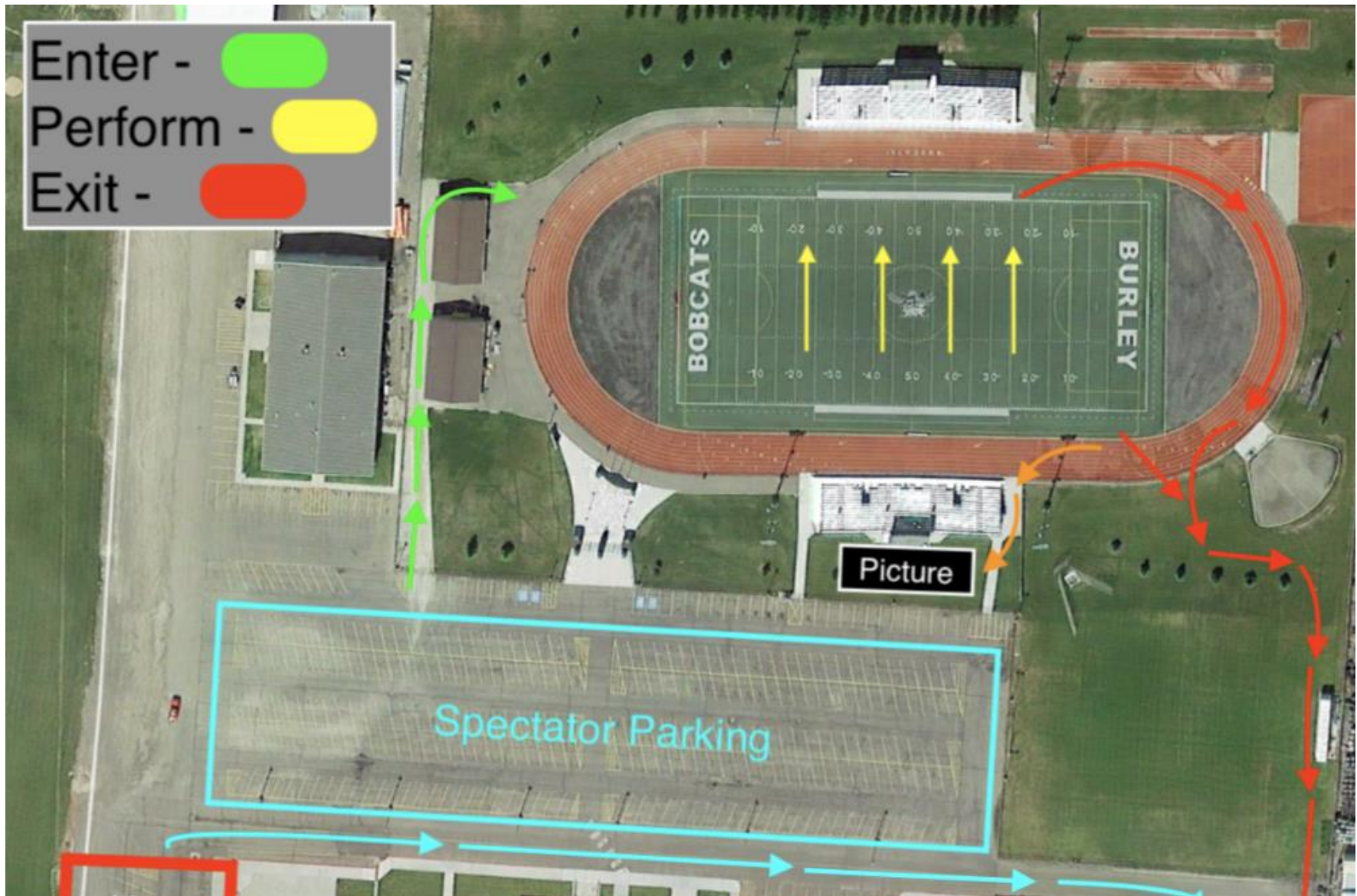




## ENSEMBLE PARKING & WARMUP









## SEVERE WEATHER MAP





## SEVERE WEATHER PLAN

**Arrival:** Buses should enter the Burley High School lot from the South entrance, (drive past the HS and turn right into the lot near the King Fine Arts Center). Buses and equipment vehicles will be met and directed to parking.

**Parking:** Buses will unload near the warm-up areas. Drivers will be directed to move around to the exit area for the event. Loading will be simplified through this process.

Spectators may park in the Skaggs Event Center lot between the HS building and Skaggs Event Center, (Stadium).

**Restrooms:** Restrooms for all participants and staff are located near the concession stand.

**Member Re-entry:** Ensemble members will be marked before leaving buses. That mark will allow them re-entry to the stadium for watching the other Bands perform.

**Warm-up:** Each Band will have guides assigned to them. They will be escorted to the warm-up and performance areas as well as the loading area.

**Performance Area:** The performance will happen in the stadium and power is provided on both the Home and Visitor 50 Yard sideline.

**Retreat/Critique:** Retreat will be staged at the entry end zone. Critique will be in the HS library.

**Tickets:** Tickets are \$10.00 and purchased at the gate.

**Concessions:** Concessions will be in the Concession building.