

Job Name:

System Reference:

Date:

SGN SERIES
 SGN-1
 SGN-2
 SGN-3

 SGN-4
 SGN-5


SHK-1 and SHN-1

**GENERAL FEATURES**

- Protects outdoor unit fan guard and coil surfaces from hail damage and snow build-up in severe climates
- 20-gauge, hot-dipped galvanized G-90 steel construction
- Heavy-duty polyester-based powder paint finish to match equipment
- SGN installs easily using existing wire guard fasteners
- SHK and SHN installs easily using existing fasteners and provided brackets and screws

NOTES:

- Outdoor unit must be mounted at least 12" off the ground or 12" above the highest average snow depth, whichever is greater
- For SGN clearances for the sides and back of the outdoor unit must be at least 9" greater than standard installation guidelines
- For best coil protection, two and three module units must be mounted with the minimum 1-3/16" separation
- If you exceed the 1-3/16" module separation listed above, additional SGN-1, SGN-2, SGN-3, SGN-4, and SGN-5 assemblies may be required or when installing Heater Panel Kits which requires reference back to the Heater Panel submittal for minimum clearance allowed
- For best snow and hail protection use SHK-1 or SHN-1 with SGN series snow/hail guards.

SPECIFICATIONS

Kit Number	Description	Net Weight (lbs.)	Ship Weight (lbs.)	Carton Dimensions
SGN-1	Side snow/hail guards (2 per kit) 25.1" wide (All ODUs)	31	35	3" H x 40" L x 23" W
SGN-2	Front and Rear snow/hail guard (2 per kit) 32" wide (Small and XL ODU)	37	41	3" H x 40" L x 23" W
SGN-3	Front and Rear snow/hail guard (2 per kit) 21.9" wide (Large ODU)	27	31	3" H x 40" L x 23" W
SGN-4	Side snow/hail guards (2 per kit) 25.25" wide (EXL ODU)	40	48	3" H x 57" L x 23" W
SGN-5	Rear snow/hail guard (2 per kit) 32.25" wide (EXL ODU)	50	58	3" H x 57" L x 23" W
SHK-1	Snow Hood for Snow/Hail Protection 33.38" wide (Small and XL ODU)	41	47	30-1/2" H x 34" L x 32" W
SHN-1	Snow Hood for Snow/Hail Protection 24.3" wide (Large ODU)	33	41	32" H x 33" L x 26-1/4" W

COMPONENTS REQUIRED PER OUTDOOR UNIT

PURY-P-T(S)NU-A(-BS) SERIES

Unit model	Module Size				Component Qty						
	S	L	XL	EXL	SGN-1	SGN-2	SGN-3	SGN-4	SGN-5	SHK-1	SHN-1
PURY-P72(T,Y)NU-A(-BS)	1				1	1				1	
PURY-P96(T,Y)NU-A(-BS)		1			1		2				2
PURY-P120(T,Y)NU-A(-BS)		1			1		2				2
PURY-P144(T,Y)NU-A(-BS)		1			1		2				2
PURY-P168(T,Y)NU-A(-BS)			1		1	2				2	
PURY-P192(T,Y)SNU-A(-BS)		2			1		4				4
PURY-P216(T,Y)SNU-A(-BS)		2			1		4				4
PURY-P240(T,Y)SNU-A(-BS)		2			1		4				4
PURY-P264(T,Y)SNU-A(-BS)		2			1		4				4
PURY-P288(T,Y)SNU-A(-BS)		2			1		4				4
PURY-P312(T,Y)SNU-A(-BS)		1	1		1	2	2			2	2
PURY-P336(T,Y)SNU-A(-BS)			2		1	4				4	

PURY-(E)P-T(S)NU-A(-BS) SERIES

Unit model	Module Size				Component Qty						
	S	L	XL	EXL	SGN-1	SGN-2	SGN-3	SGN-4	SGN-5	SHK-1	SHN-1
PURY-EP72(T,Y)NU-A(-BS)	1				1	1				1	
PURY-EP96(T,Y)NU-A(-BS)		1			1		2				2
PURY-EP120(T,Y)NU-A(-BS)		1			1		2				2
PURY-EP144(T,Y)NU-A(-BS)		1			1		2				2
PURY-EP168(T,Y)NU-A(-BS)			1		1	2				2	
PURY-EP192(T,Y)NU-A(-BS)				1		1		1	1	2	
PURY-EP192(T,Y)SNU-A(-BS)		2			1		4				4
PURY-EP216(T,Y)NU-A(-BS)				1		1		1	1	2	
PURY-EP216(T,Y)SNU-A(-BS)		2			1		4				4
PURY-EP240(T,Y)NU-A(-BS)				1		1		1	1	2	
PURY-EP240(T,Y)SNU-A(-BS)		2			1		4				4
PURY-EP264(T,Y)SNU-A(-BS)		2			1		4				4
PURY-EP288(T,Y)SNU-A(-BS)		2			1		4				4
PURY-EP312(T,Y)SNU-A(-BS)		1	1		1	2	2			2	2
PURY-EP336(T,Y)SNU-A(-BS)			2		1	4				4	
PURY-EP384(T,Y)SNU-A(-BS)				2		2		1	2	4	
PURY-EP432(T,Y)SNU-A(-BS)				2		2		1	2	4	

PURY-HP-T(S)NU-A SERIES

Unit model	Module Size				Component Qty						
	S	L	XL	EXL	SGN-1	SGN-2	SGN-3	SGN-4	SGN-5	SHK-1	SHN-1
PURY-HP72(T,Y)NU-A		1			1		2				2
PURY-HP96(T,Y)NU-A		1			1		2				2
PURY-HP120(T,Y)NU-A		1			1		2				2
PURY-HP144(T,Y)SNU-A		2			1		4				4
PURY-HP192(T,Y)SNU-A		2			1		4				4
PURY-HP240(T,Y)SNU-A		2			1		4				4

COMPONENTS, contd.

PUHY-P-T(S)NU-A(-BS) SERIES

Unit model	Module Size			Component Qty						
	S	L	XL	SGN-1	SGN-2	SGN-3			SHK-1	SHN-1
PUHY-P72(T,Y)NU-A(-BS)	1			1	1				1	
PUHY-P96(T,Y)NU-A(-BS)		1		1		2				2
PUHY-P120(T,Y)NU-A(-BS)		1		1		2				2
PUHY-P144(T,Y)NU-A(-BS)		1		1		2				2
PUHY-P168(T,Y)NU-A(-BS)			1	1	2				2	
PUHY-P192(T,Y)SNU-A(-BS)		2		1		4				4
PUHY-P216(T,Y)SNU-A(-BS)		2		1		4				4
PUHY-P240(T,Y)SNU-A(-BS)		2		1		4				4
PUHY-P264(T,Y)SNU-A(-BS)	1	2		1	1	4			1	4
PUHY-P288(T,Y)SNU-A(-BS)	1	2		1	1	4			1	4
PUHY-P312(T,Y)SNU-A(-BS)	1	2		1	1	4			1	4
PUHY-P336(T,Y)SNU-A(-BS)		3		1		6				6
PUHY-P360(T,Y)SNU-A(-BS)		3		1		6				6
PUHY-P384(T,Y)SNU-A(-BS)		3		1		6				6
PUHY-P408(T,Y)SNU-A(-BS)		3		1		6				6
PUHY-P432(T,Y)SNU-A(-BS)		3		1		6				6

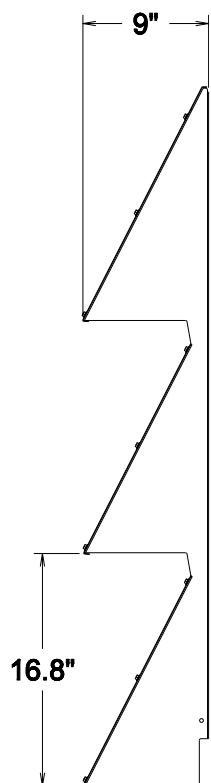
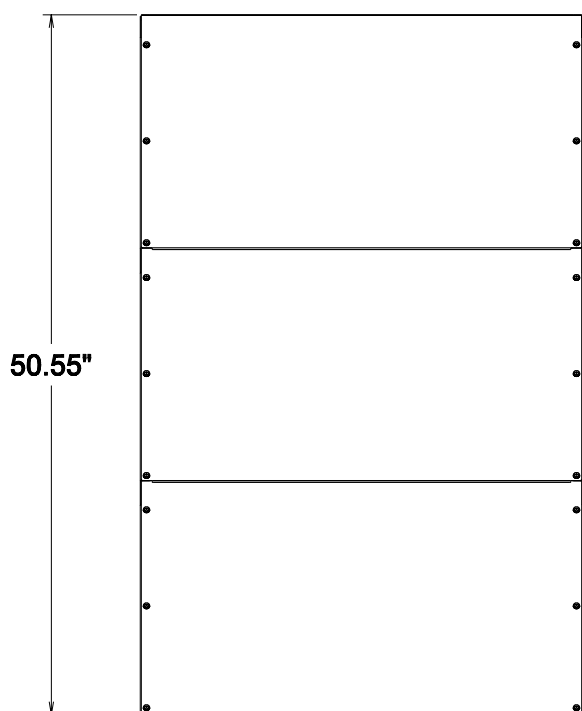
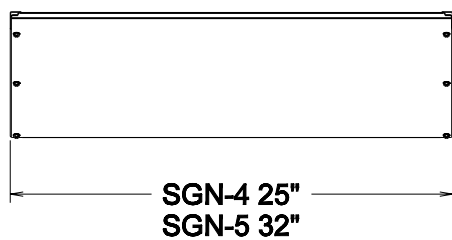
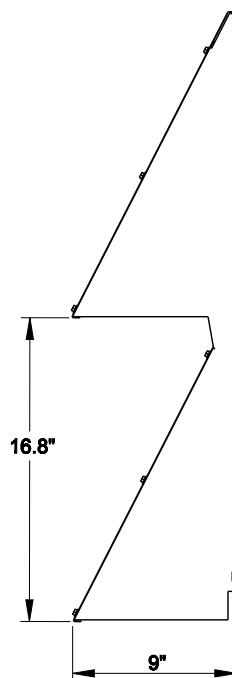
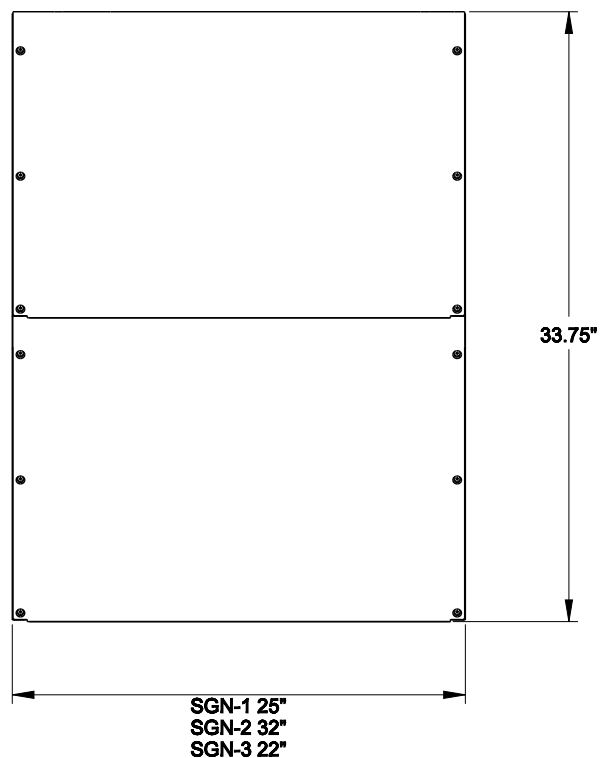
PUHY-(E)P-T(S)NU-A(-BS) SERIES

Unit model	Module Size				Component Qty						
	S	L	XL	EXL	SGN-1	SGN-2	SGN-3	SGN-4	SGN-5	SHK-1	SHN-1
PUHY-EP72(T,Y)NU-A(-BS)	1				1	1				1	
PUHY-EP96(T,Y)NU-A(-BS)		1			1		2				2
PUHY-EP120(T,Y)NU-A(-BS)		1			1		2				2
PUHY-EP144(T,Y)NU-A(-BS)		1			1		2				2
PUHY-EP168(T,Y)NU-A(-BS)			1		1	2				2	
PUHY-EP192(T,Y)NU-A(-BS)			1		1	2				2	
PUHY-EP192(T,Y)SNU-A(-BS)		2			1		4				4
PUHY-EP216(T,Y)NU-A(-BS)				1		1		1	1	2	
PUHY-EP216(T,Y)SNU-A(-BS)		2			1		4				4
PUHY-EP240(T,Y)NU-A(-BS)				1		1		1	1	2	
PUHY-EP240(T,Y)SNU-A(-BS)		2			1		4				4
PUHY-EP264(T,Y)SNU-A(-BS)	1	2			1	1	4			1	4
PUHY-EP288(T,Y)SNU-A(-BS)	1	2			1	1	4			1	4
PUHY-EP312(T,Y)SNU-A(-BS)	1	2			1	1	4			1	4
PUHY-EP336(T,Y)SNU-A(-BS)		3			1		6				6
PUHY-EP360(T,Y)SNU-A(-BS)		3			1		6				6
PUHY-EP384(T,Y)SNU-A(-BS)		3			1		6				6
PUHY-EP408(T,Y)SNU-A(-BS)		3			1		6				6
PUHY-EP432(T,Y)SNU-A(-BS)		3			1		6				6

PUHY-HP-T(S)NU-A SERIES

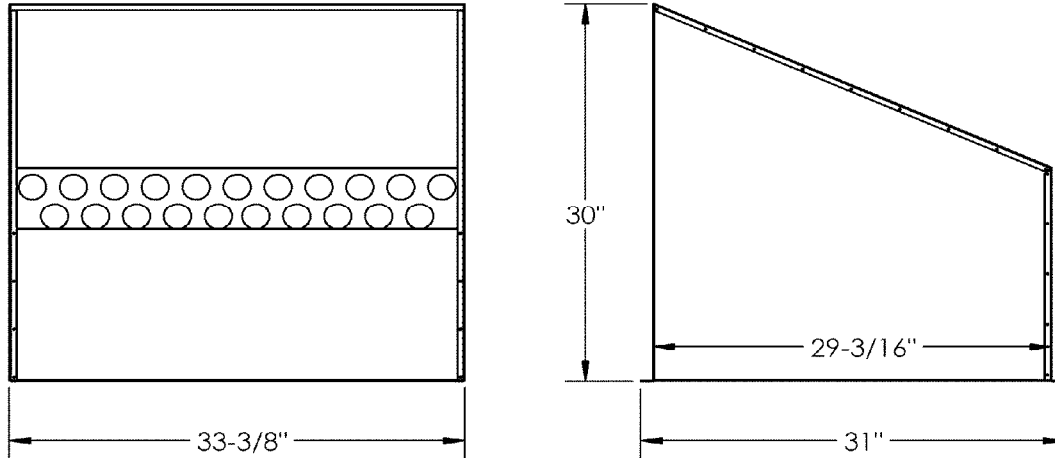
Unit model	Module Size				Component Qty						
	S	L	XL	ELX	SGN-1	SGN-2	SGN-3	SGN-4	SGN-5	SHK-1	SHN-1
PUHY-HP72(T,Y)NU-A		1			1		2				2
PUHY-HP96(T,Y)NU-A		1			1		2				2
PUHY-HP120(T,Y)NU-A		1			1		2				2
PUHY-HP144(T,Y)SNU-A		2			1		4				4
PUHY-HP192(T,Y)SNU-A		2			1		4				4
PUHY-HP240(T,Y)SNU-A		2			1		4				4

SGN-1, SGN-2, SGN-3, SGN-4, and SGN-5: EXTERNAL DIMENSIONS

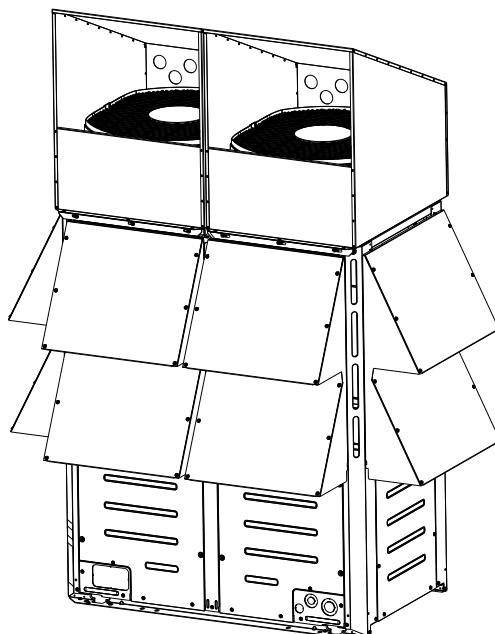
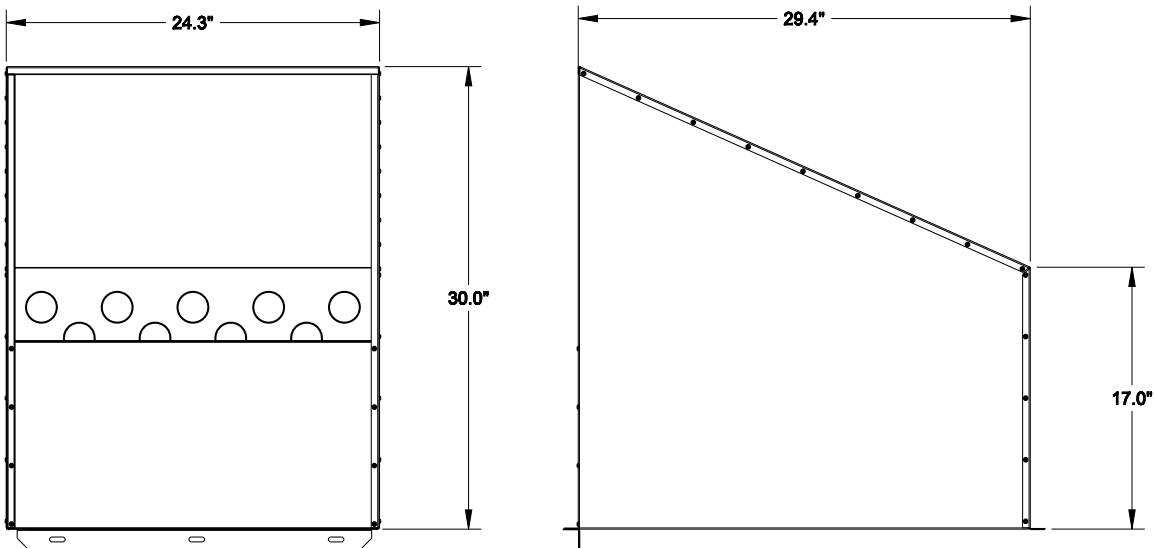


EXTERNAL DIMENSIONS: SHK-1 and SHN-1

SHK-1



SHN-1



1340 Satellite Boulevard, Suwanee, GA 30024
Toll Free: 800-433-4822 www.mehvac.com