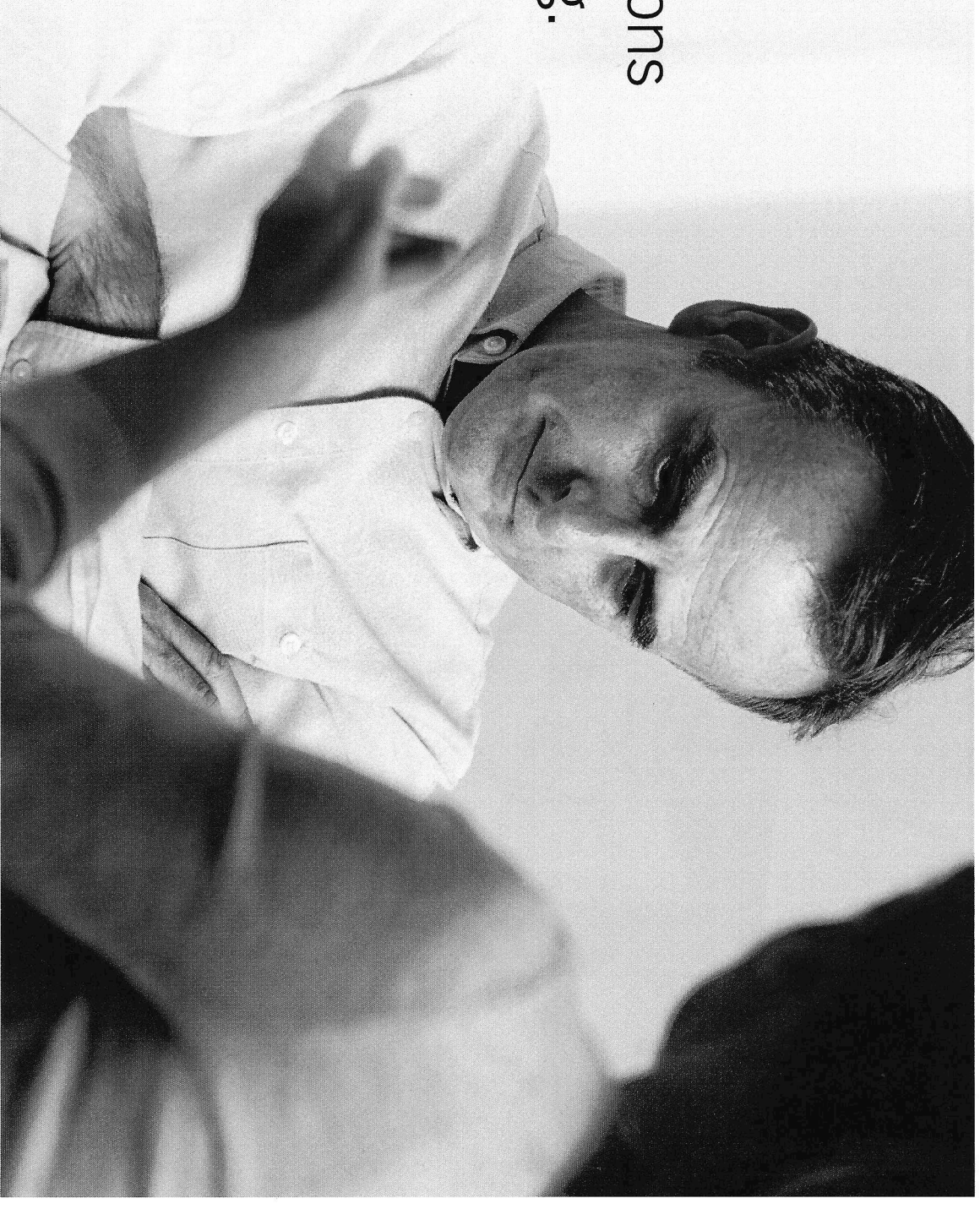


Hard conversations  
are worth having.

One-Eighty™



A collage of diverse human faces of various ages and ethnicities, arranged in a grid-like pattern. The faces are shown from the chest up, with some looking directly at the camera and others slightly off-center. The text "The face of a drug or alcohol user does not have a 'look.'" is overlaid in a white, sans-serif font, centered horizontally and slightly tilted upwards. The background is a light, textured grey. In the bottom right corner, there is a small, faint logo that reads "One-Eighty™".

The face of a drug or alcohol user does not have a "look."

One-Eighty™

A collage of diverse human faces of various ages and ethnicities, arranged in a grid-like pattern. The faces are shown from the chest up, with some looking directly at the camera and others slightly off-center. The text "The face of a drug or alcohol user does not have a 'look.'" is overlaid in a white, sans-serif font, centered horizontally and slightly above the middle vertically. The text is enclosed in a thin white rectangular border. The overall image conveys a message of inclusivity and the universality of substance use.

The face of a drug or alcohol user does not have a "look."

One-Eighth™

# Who does addiction affect?

Children, parents, co-workers, neighbors, spouses

1 in 3 women are affected

88,000 deaths occur each year

23 million Americans age 12 and older suffer from  
Substance Use Disorder

12 - 18 year olds are increasing the fastest

One-Eighty™



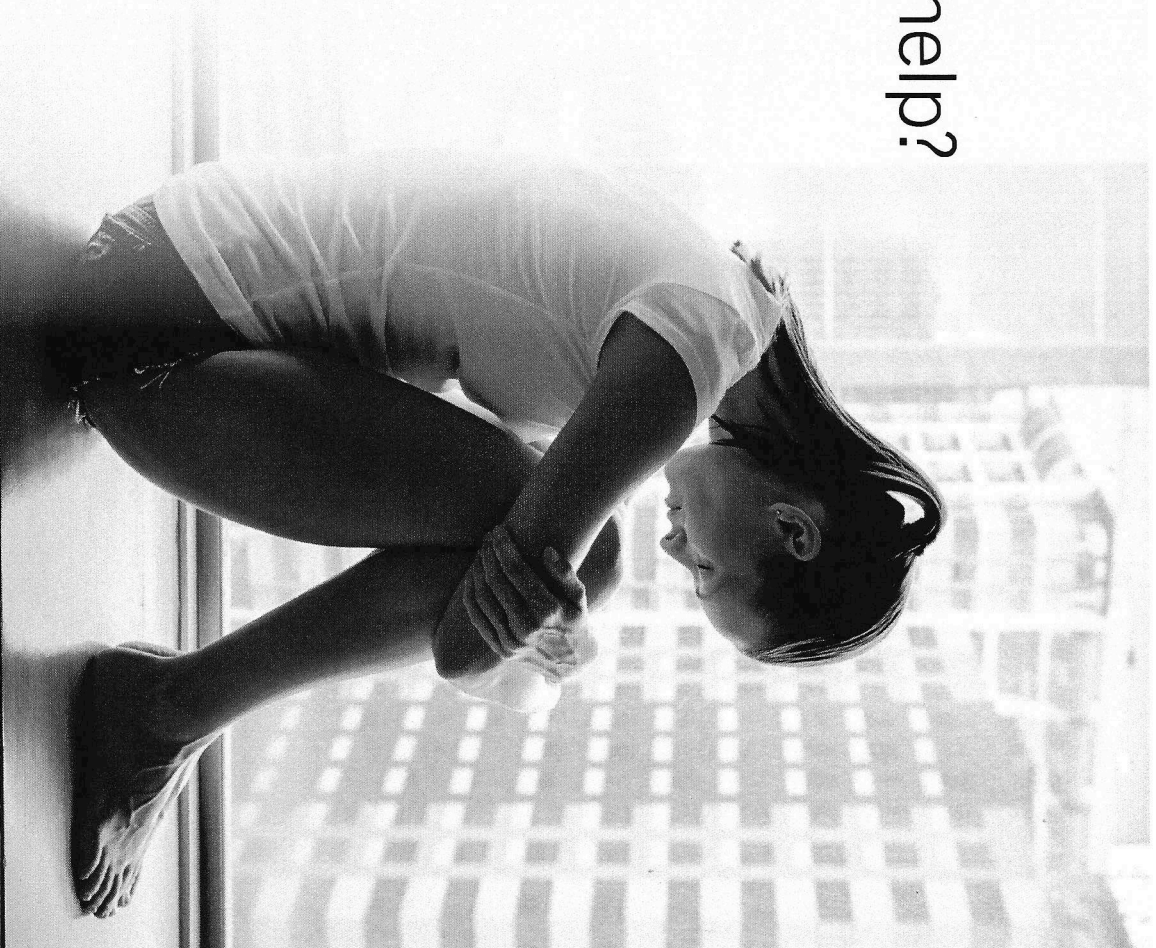


# When do you know you need help?

**You or family members may begin to notice:**

- Social and/or recreational sacrifices**
- Taking risks**
- Secrecy and solitude**
- Denial**
- Excess consumption**
- Dropping hobbies and activities**
- Having stashes**
- Financial difficulties**
- Relationship problems**

**One-Eighty™**



# What is One-Eighty?

Voluntary, hospital-based, medical withdrawal management service

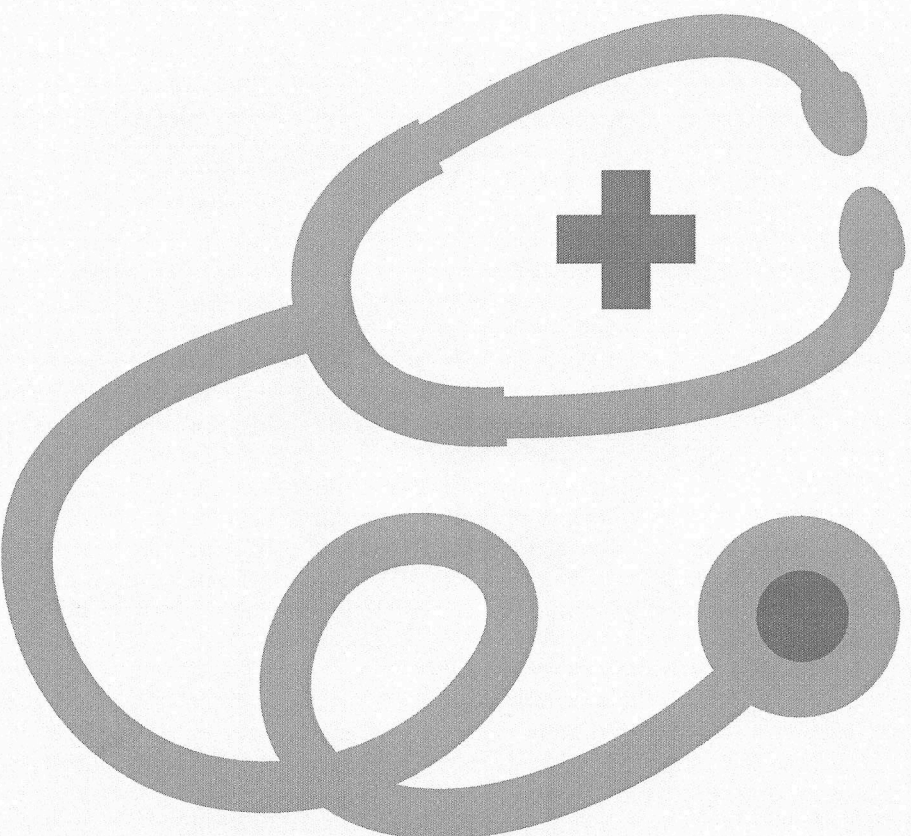
Confidential, medical environment

Not a psychiatric or behavioral care service

Average length of stay is 3 days

Discharge plan for appropriate after-care

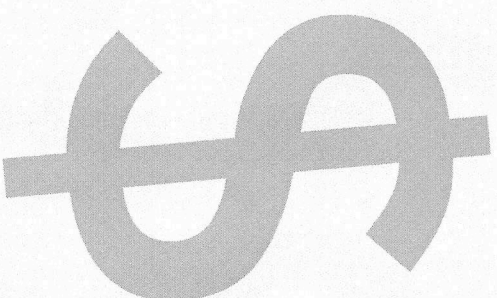
**One-Eighty**<sup>TM</sup>



# How do I pay for this help?

Covered by most insurances including Medicare and Medicaid

Cash pay is also an option



**One-Eighty™**

# What support is available to the patient and family?

Newly remodeled patient rooms are designed for healing and comfort.

Recliners and sofas are available for family and overnight guests.

Chaplains are available for spiritual care.



One-Eighty™



# What after-care is available?

Outpatient counseling

Residential program

Alcoholics Anonymous or similar support

Discharge planning will direct the patient to this next level of care.

**One-Eighty**<sup>TM</sup>





# Questions?

For questions, referrals and assistance,  
contact the One-Eighty office.

**(844) HCM-QUIT**

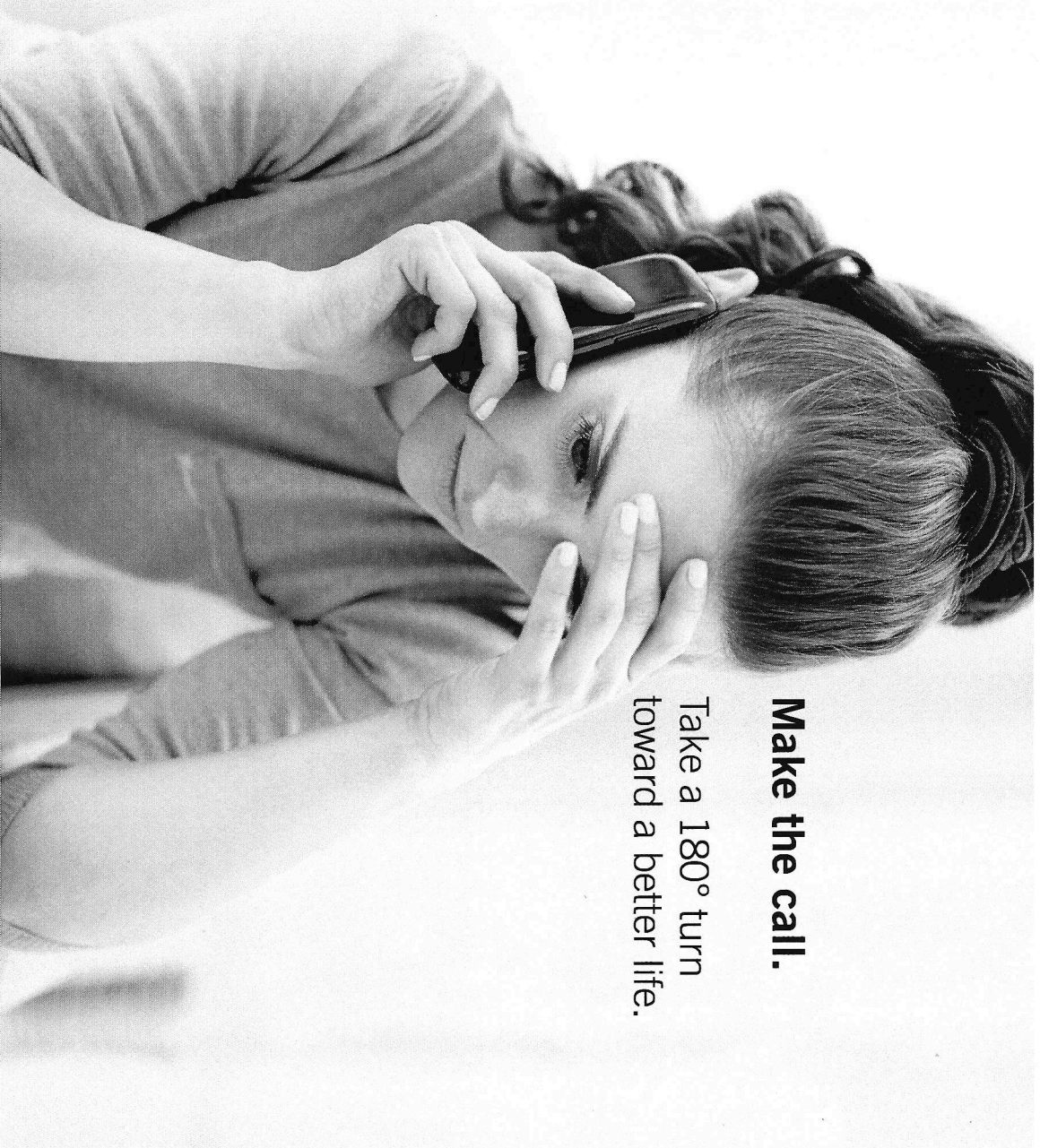
**(844) 426-7848**

[hillcountrymemorial.org/one-eighty](http://hillcountrymemorial.org/one-eighty)

**One-Eighty™**

**Make the call.**

Take a 180° turn  
toward a better life.



*"I came here sad, afraid, feeling little value or purpose.*

*Your staff turned me around, helped me believe again in  
the fundamental good in those around us, restored my hope  
and belief in my worthiness.*

*This is the best I have felt in fifteen years."*

*One-Eighty Patient*

**One-Eighty™**