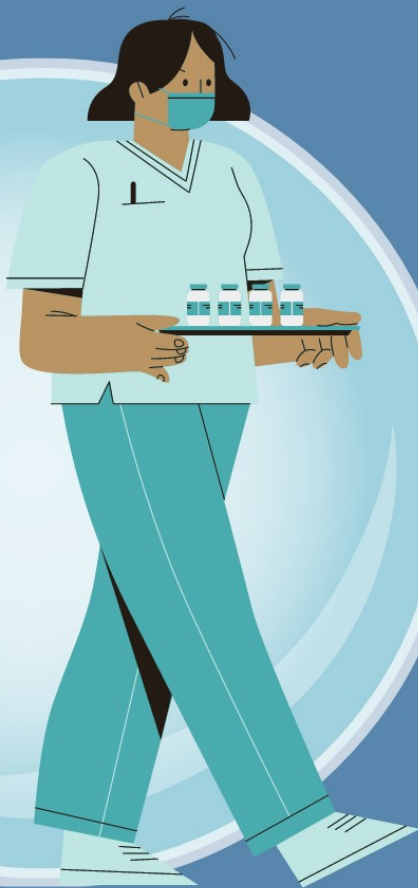


# From Symptom to Diagnosis: Enhancing Diagnostic Reasoning Through Case Studies

## UNFOLDING CASE STUDIES



If you have an interesting case to share, please email [tholdaway@fgcu.edu](mailto:tholdaway@fgcu.edu)

School of Nursing DNP Program (50-719) CEUs available pending approval.

"This project is supported by the Health Resources and Services Administration (HRSA) of the U. S. Department of Health and Human Services (HHS) as part of an award totaling \$2,599,174 with zero percentage financed with nongovernmental sources. The contents are those of the author(s) and do not necessarily represent the official views of, nor an endorsement, by HRSA, HHS or the U.S. Government."

Monthly presentation of a case study

Audience: preceptors, faculty, and students

Identify clinical pearls

Collectively address challenges, share innovative solutions, and ultimately reduce clinical errors

Improve patient outcomes through collaborative learning and discussion

Register to attend by scanning the QR code or go to:

<https://fgcu-edu.zoom.us/join/tJ0ldeyqqjkjHdd2QC6LKo8QQGI9vAsCgrEe#/registration>



**FGCU**

MARIEB COLLEGE OF  
HEALTH & HUMAN SERVICES  
School of Nursing