

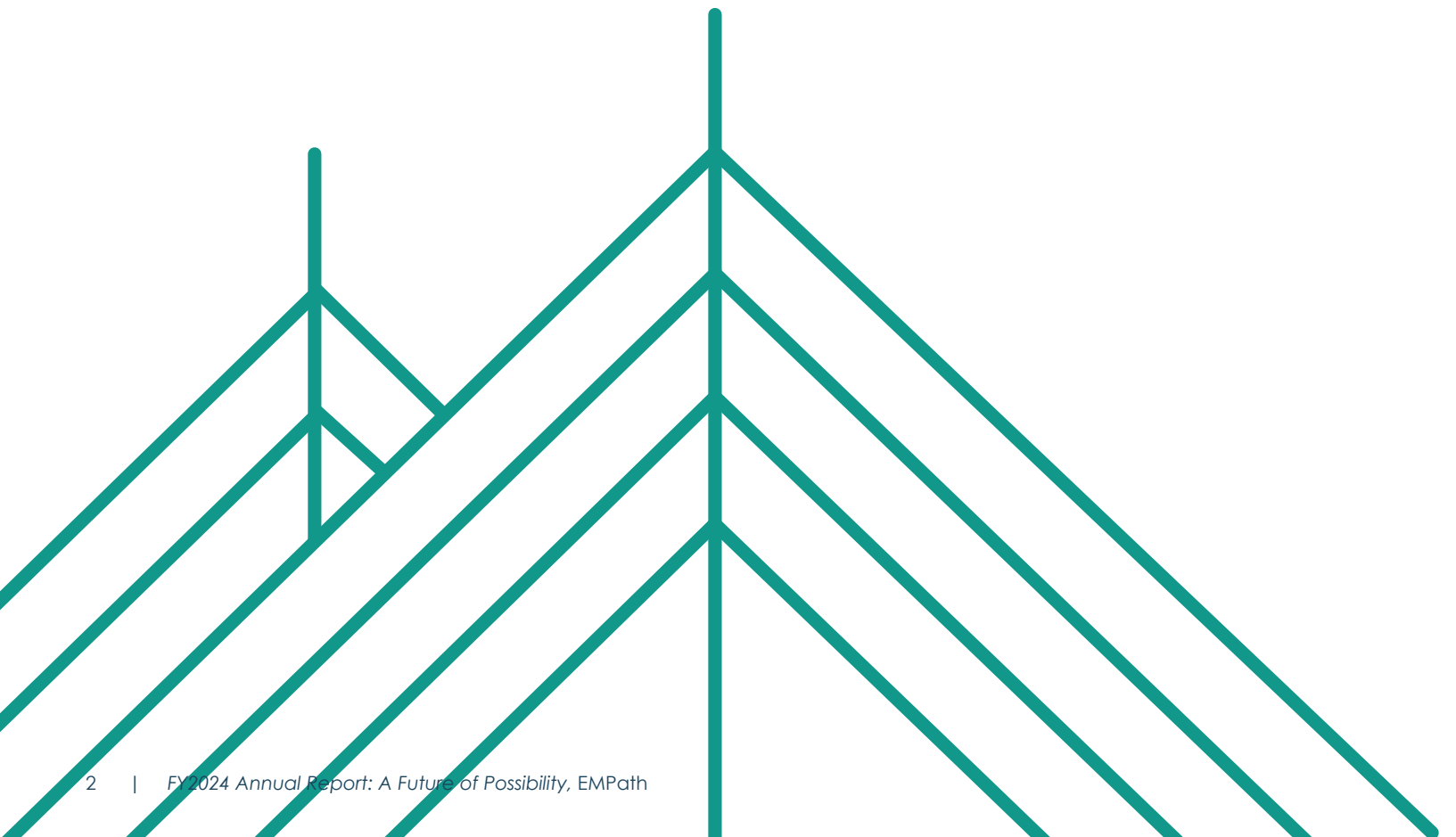


Future of Possibility

2024 Annual Report



EMPath
Economic Mobility Pathways



Hello From Our President & CEO

Dear **EMPath** community,

It has been an incredible year. Together, we embarked on a season of celebration; commemorating 200 years of EMPath, 100 years of Hastings House, 15 years of Mobility Mentoring®, our economic mobility coaching model, and 10 years of our international learning network, the Economic Mobility Exchange. We are delighted to share some highlights of our past year with you in this report – we have much to be grateful for.

EMPath continues to be on the frontlines of supporting people in crisis. In the past year, we directly served more than 1,100 people in the Greater Boston area, 431 of whom were children – a **10 percent increase in people served** in just one year. We've worked with families forced to make impossibly tough choices between food, housing, diapers, transportation, childcare, and healthcare costs. We've advocated for change in deep-rooted systemic issues, like housing affordability and accessible childcare, that put barriers between families and their ability to move towards economic prosperity.

In March, we hosted our biennial Disrupting Poverty Conference, with **keynote sessions from TIME Magazine 2024 100 Next awardee, Aisha Nyandoro**, and many more incredible leaders in the field. We contributed meaningful research to the field with multiple publications this year; one focused on the potential of pairing guaranteed income with economic mobility coaching, and another an overview of the impacts of poverty on youth and young families, and the benefits of promoting family economic stability. And EMPath kicked off our bi-centennial year of celebration with our highest-fundraising gala of all time, honoring a trio of trailblazing women, Mayor Michelle Wu, Sandy Edgerley and Shellee Mendes.

And still, the need for economic mobility coaching has not abated. In the United States, there has been an increase in the national poverty level for the second year in a row and people across the globe continue to struggle in systems that are not designed for them to succeed.¹ In Massachusetts, a new nine-month cap on shelter stays has put undue stress on our participants and staff as they do their best to achieve economic and housing stability on an unrealistic timeline. Through all of this, our participants have shown us what resilience looks like in action, continuing to strive for more.

At EMPath, we are fortunate to see a future full of possibilities for our participants. Time and time again, families prove that with access to supports that work, like Mobility Mentoring, it is possible to disrupt poverty. **This year our participants broke barriers and accomplished over 80% of the goals they set out to achieve.**

We can only do this work with the support of our donors, staff, board of directors, ambassadors, volunteers, and community champions. We hope that we can continue to count on your advice, generosity, and feedback as together, we move forward into another year of service, advocacy, and transformational change.

With gratitude,

Kim Janey
President & CEO, EMPath





ABOUT EMPATH



EMPath

Economic Mobility Pathways

Economic Mobility Pathways (EMPath)

is a 200-year-old Boston-based nonprofit that disrupts poverty through direct services, advocacy, research, and a global learning network. Our mission is to transform people's lives by helping them move out of poverty and to provide other institutions with the tools to systematically do the same.

Our previous names include Crittenton Women's Union, the Women's Educational and Industrial Union, and Crittenton, Inc. The organization has been continuously operating in one or more capacities since 1824. While our name has changed over the decades, our focus on economic empowerment has not.

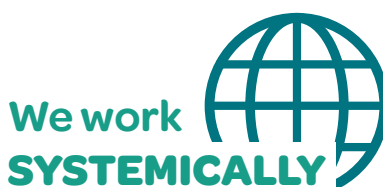
EMPath is known worldwide for our economic mobility coaching approach, which is founded on the belief that each pathway out of poverty is different. We are at the helm of a movement to shift thinking from human services to human development, and to create lasting pathways to economic mobility for all.



In the Greater Boston Area, we directly serve over 1,100 people each year, 1/3 of them children, through housing-based and other economic mobility programs. All program participants receive one-on-one Mobility Mentoring coaching, our research-backed method for helping people in poverty climb the economic ladder.



Over 400,000 people have received Mobility Mentoring through our global learning network, the Economic Mobility Exchange™. Our 1000+ member organizations include publicly and privately-funded nonprofits, philanthropic organizations, human service agencies, educational institutions and more.



We refine our practice through evaluation and translate the latest research into action. Then we use what we've learned to advocate at the state and federal levels to advance policy change that will ultimately transform systems.



(L) EMPATH CEO Kim Janey, U.S. Congresswoman Katherine Clark, and EMPATH VP of Public Policy Ruthie Liberman (R) EMPATH Conference

A Letter From Our Board Chair

Dear friends of **EMPath**,

As I began my tenure as the Chair of the EMPath Board of Directors, it's been wonderful to see our community come together to celebrate our 200th anniversary year! This season of celebration has been an important moment for EMPath to not only continue to build on our long history of supporting families in their path to economic mobility, but also explore new ways to have an even greater impact on families and the sector through our own direct service programs and the hundreds of members of our Exchange network.

Our shared commitment to disrupt poverty and empower families here in Boston, across the country, and around the world to climb the economic ladder has never been more important. Our participants have accomplished so much in the last twelve months at a time when it is increasingly difficult to get ahead. From buying homes in a period of historically high interest rates to securing permanent housing when facing a limit on how long families can stay in shelter, EMPath participants are working harder than ever to make ends meet and create the future they want for themselves and their children.

It has been an incredible year. Some highlights include:

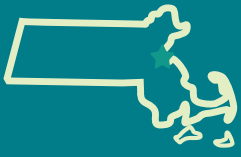
- ✦ AMP Up, our randomized control trial, completed enrollment in January 2024. Participants are already seeing remarkable outcomes.
- ✦ 90% of participants who exited our shelter programs (and did not go to another, non-EMPath shelter) moved into stable housing. For context: nationally, 57% of families exiting shelter with a known exit destination went into permanent housing.
- ✦ We marked 10 years of the Exchange, which has grown from a handful of organizations in 2014 to a network of 1,000+ organizations across the U.S. and globally – all of which adapt Mobility Mentoring in their own work to support families.

In this report, you will read details about the outcomes that are possible when people have access to Mobility Mentoring. Our approach to disrupt poverty works, and I am so grateful to have you as our partners in this work. EMPath's finances are strong, and we continue to operate efficiently and responsibly. While we have been in operation for 200 years, I believe the future is wide open for EMPath and the families we serve. Thank you for coming with us on the journey.

Best,

D'Arcy Goldman
Chair, Board of Directors





WE WORK LOCALLY

EMPath's legacy of empowering low-income people dates to 1800s Boston. Staying true to our mission, EMPath's Mobility Mentoring approach meets the challenges of poverty today. We are committed to helping families achieve long-term success.

Shelter and Housing Programs

Hastings House, the longest running of EMPath's programs, is an emergency congregate shelter that accommodates 58 families.

The Hosmer Co-Shelter program consists of three multi-unit apartment buildings for 34 single moms and their child in 17 units in Mattapan.

Horizons is an emergency congregate shelter that currently houses 8 families.

Striving Toward Economic Progress and Stability (STEPS), provides 60 homeless families emergency housing in apartments throughout Boston, offering flexibility to shelter two-parent families, larger families, and those with special needs.

The **Abbot Massachusetts Rental Voucher Program (MRVP)**, located in the Dorchester neighborhood, is a residential program serving 11 families. Abbot MRVP uses Mobility Mentoring to support participants in achieving the program goal of full-time employment, with an annual salary of at least \$35,000 – on track to a Smart Start Job.

EMPath participants have diverse backgrounds and lived experiences

1,142
individuals total

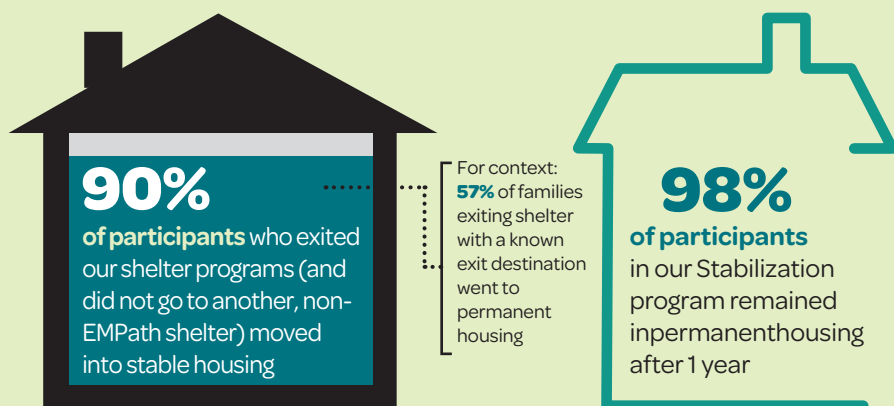
711
adults

431
children

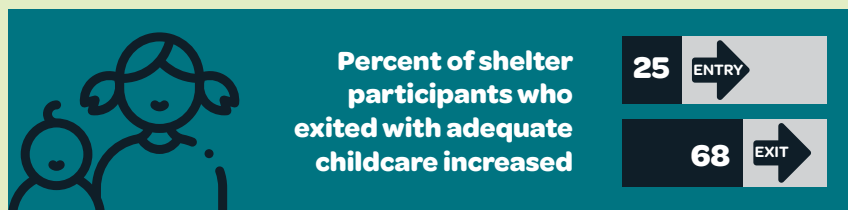
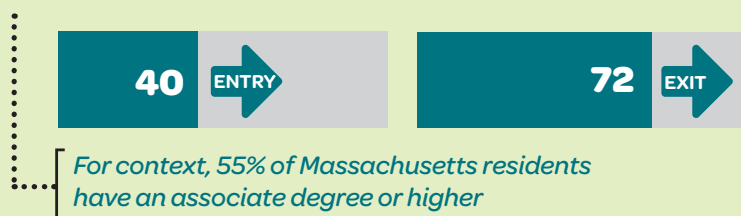


680 households impacted

- 89%** identify as female
- 94%** identify as BIPOC
- 45%** have a primary language other than English
- 56%** of participants were born outside the U.S.
- 38%** reported having a disability or chronic health condition
- 39%** of participants were homeless at one point during the year



Flagship program participants advanced their education % with a college degree (associate, bachelor's, or post-graduate)



EMPath CEO Kim Janey and City of Newton Mayor Ruthanne Fuller

Long Term Economic Mobility Programs

EMPath's **Stabilization** program works aggressively to assist families who have recently moved out of an EMPath emergency shelter into permanent housing in neighborhoods throughout Boston.

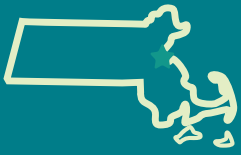
Career Family Opportunity (CFO) is EMPath's groundbreaking five-year Mobility Mentoring program that partners with low-income families to develop their individualized pathways to economic mobility. To successfully graduate from CFO, participants must earn at least 60% of Area Median Income (\$78,360 for a family of 2 in 2024) and save \$3,425 of their own money (which EMPath matches 2 to 1, so that graduates have over \$10,000 saved as an asset).

AMP Up is a randomized control trial operated by EMPath with support from the Boston Housing Authority (BHA) and Cambridge Housing Authority (CHA). EMPath is partnering with researchers at Harvard University and the Massachusetts Institute of Technology (MIT) to better understand the impact of Mobility Mentoring® and how it can evolve. The AMP Up study has enrolled 610 participants, who are all residents of BHA and CHA public or leased housing, between the ages of 18 and 55, and willing, able, and legally authorized to work in the U.S.

In **Newton Thrive**, EMPath provides two years of Mobility Mentoring to 50 Newton residents who are at or below 50% of the area median income (AMI), have children under 18 years old (or are pregnant), and are interested in working and increasing their income. In addition, Newton Thrive participants receive monthly cash assistance payments of \$250 over 24 months.

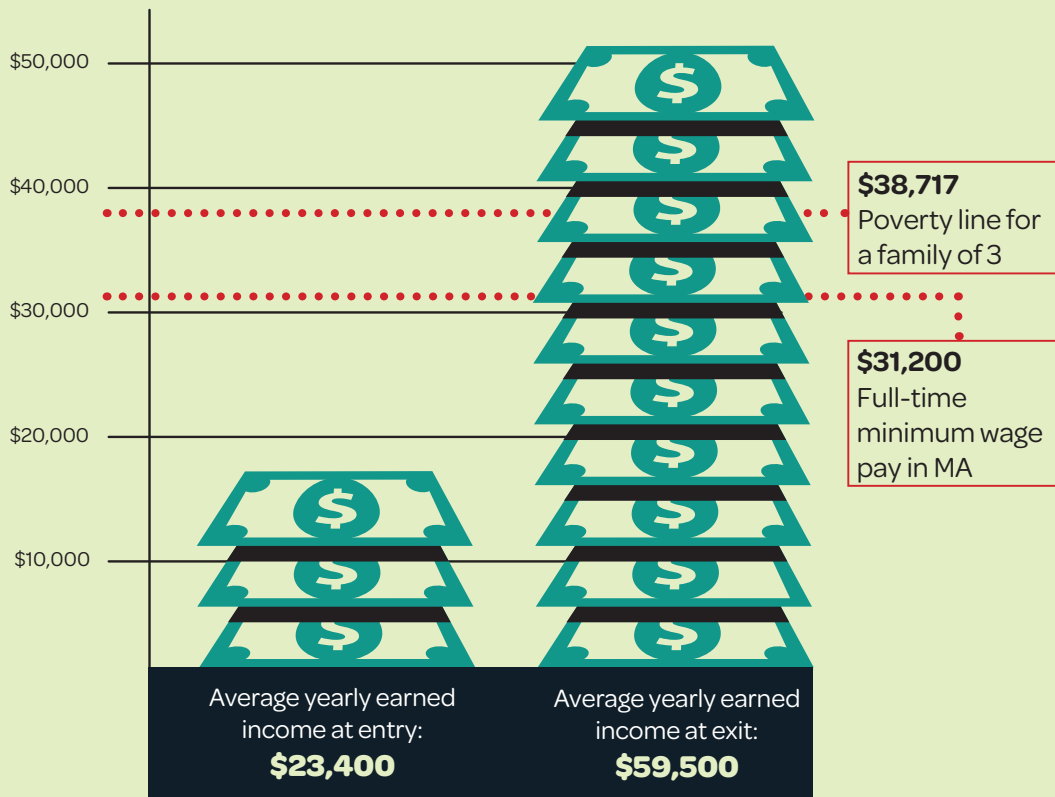
The Center for Learning & Practice (CLP)

is led by Economic Mobility Specialists with expertise in career management, financial literacy, higher education, well-being, and other skills help low-income families set and attain individualized goals that will help them get moving along the pathway to economic independence.

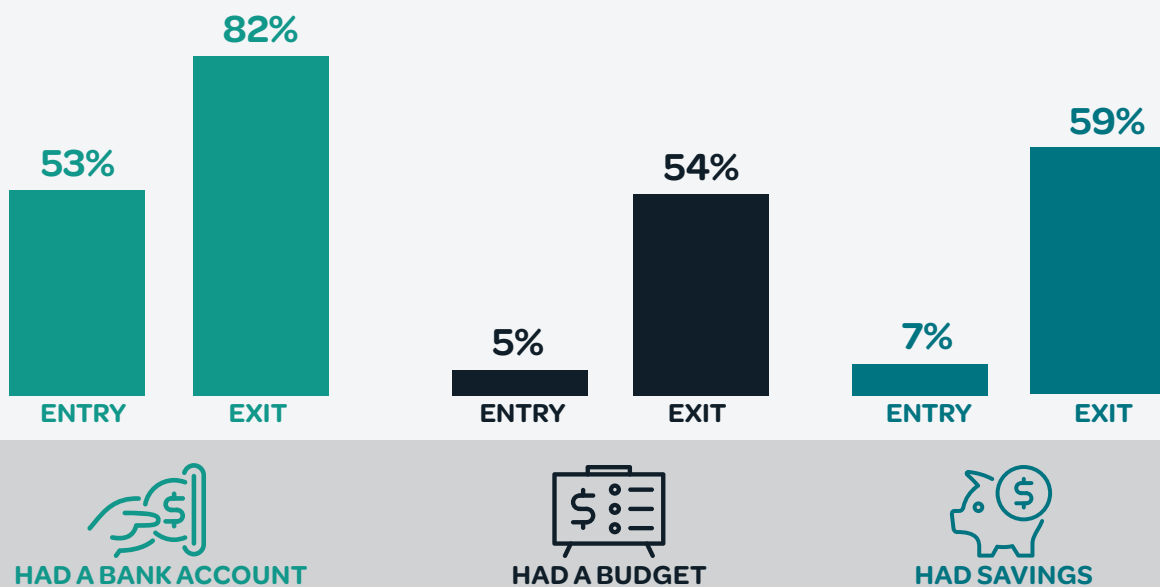


WE WORK LOCALLY

Flagship program participants more than doubled their income



Shelter participants made big strides with their finances



For context: Only 51% of all Americans have savings of at least one month's expenses⁴



PARTICIPANT PERSPECTIVE

When Brenda arrived at Hastings House in 2022 with her three-month-old daughter, she brought hope and determination with her, too. She faced many challenges, like being a single mother in a country where she didn't speak the language and had no family support. Brenda also lives with a disability, which makes it hard for her to hear and means that she's had many surgeries. "I'm here living as a single parent, in a country that I don't know anything about," she reflects. "It's been hard, but I never imagined I'd be where I am right now."

Brenda has achieved remarkable milestones. She has obtained her driver's license, purchased a car, and began taking English for Speakers of Other Languages (ESOL) Classes. Her dedication earned her special recognition from the community at Hastings House, where she received a certificate for improving her score on the Economic Mobility Bridge. Though there are many things that she is proud of, Brenda has sometimes struggled to stay positive. Adapting to life in the shelter was difficult. "Sometimes the food was so different from what I was used to, I would cook three days' worth of meals for me and my daughter at once just to have something familiar," she explains.

Eventually, Hastings became more than just a temporary home – it became a place of acceptance and growth. "I felt more secure, more comfortable, and more free once I entered the shelter," she shares. Having faced bullying and discrimination in her home country, Brenda was worried that the staff and other participants at Hastings would treat her the same way. Instead, she found a supportive community. Through a close relationship with her Mobility Mentor, Brenda was able to share her story. "Venting helped lift the weight off

my shoulders," she says, noting how she's learned to be content with what she has and not complicate her life by worrying what other people think.

Today, Brenda is living in permanent housing and setting her sights on big dreams. She hopes to attend college when the time is right.

When asked what she would want others to know about her experience, Brenda shared: "Everyone's situation is different, but you have to keep moving forward." She particularly emphasizes the importance of building community, which she found at Hastings House. "Even though I had some bad experiences, I never thought I'd meet such good people or that I'd be driving my own car," Brenda reflects.

"I learned to be independent and do things on my own with my daughter. I am more mature and have grown stronger during my time with EMPATH."





For a decade, EMPath's global learning network, which is now 1,000+ organizations strong, has adapted our Mobility Mentoring model and is working to re-envision the systems that support people experiencing poverty.

Types of Exchange members:

- ✦ Government agencies
- ✦ Housing providers
- ✦ Head Start & early childhood programs
- ✦ Child welfare organizations
- ✦ Colleges
- ✦ Healthcare providers
- ✦ Philanthropic organizations
- ✦ Workforce development organizations

1000+

organizations in our global
learning network in FY24

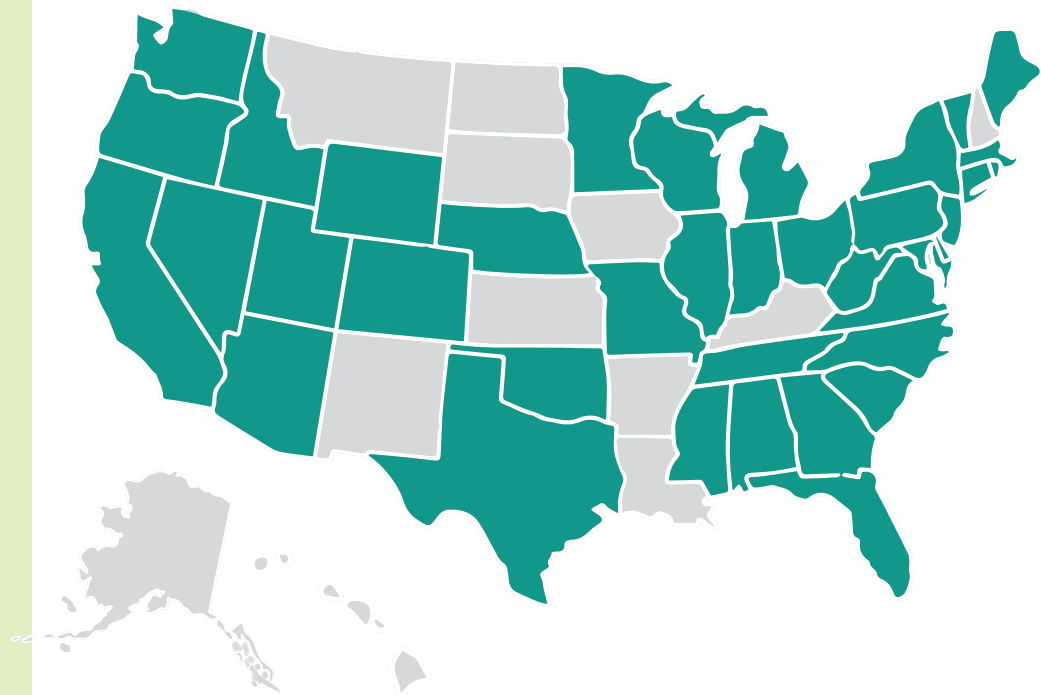
Exchange members are located nationwide, and even globally.

400,000+ total individuals served through the network since 2014

6,000+ individuals
trained on our
Mobility Mentoring
model in FY24

98% of organizations
would recommend the
Exchange to others

UNITED STATES



INTERNATIONAL



Australia



Cameroon



El Salvador



Guatemala



Ivory Coast



Kenya



Nigeria



The Philippines



Singapore



Uganda



United Kingdom

2024 Disrupting Poverty Conference

In March 2024, EMPath held our biennial Disrupting Poverty Conference, gathering more than 450 practitioners, policy makers, philanthropists, and academics from more than 35 states and five countries to discuss new strategies in disrupting poverty. Filling the conference center at Boston University, speakers and attendees engaged in powerful and thought-provoking discussions around a wide variety of topics related to advancing economic mobility – from guaranteed income and closing the racial wealth gap, to affordable housing and centering lived experience in policy and program design.

Members of EMPath’s global learning network, the Economic Mobility Exchange™, gathered ahead of the Public Conference for a members-only Convening, which served as an exciting opportunity to mark 10 years since the global network launched.



Speakers at the Public Conference included:

- ✦ New School Professor Darrick Hamilton
- ✦ Boston Foundation President and CEO Lee Pelton
- ✦ U.S. Representative Ayanna Pressley (MA-07)
- ✦ Dr. Ibram X. Kendi, *Boston University*
- ✦ Dr. Kathryn Edin and, Luke Schaefer of Princeton University, and Timothy Nelson of the University of Michigan – authors of the book, *The Injustice of Place*
- ✦ MA Housing Secretary Edward M. Augustus
- ✦ Aisha Nyandoro of Springboard to Opportunities and creator of the Magnolia Mother’s Trust

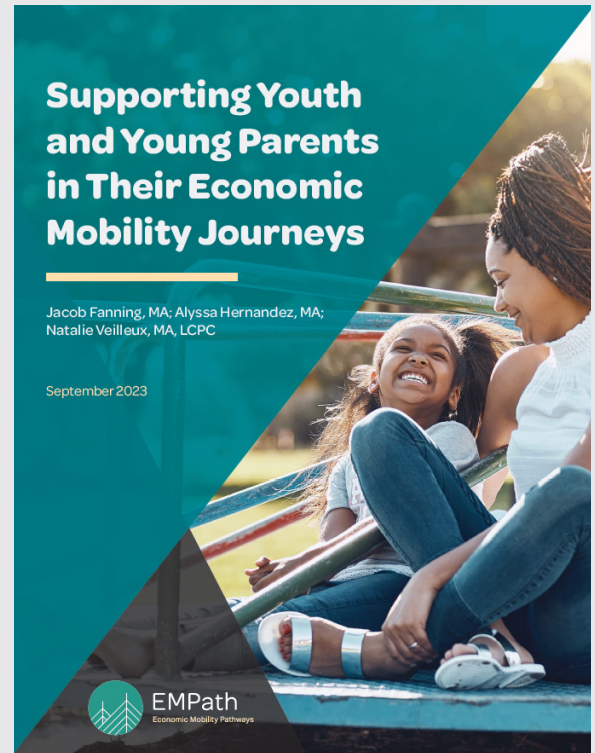


WE WORK SYSTEMICALLY

Two New Papers

In September 2023, EMPath published **“Supporting Youth and Young Parents in Their Economic Mobility Journeys,”** with support from the Annie E. Casey Foundation. The publication provides an overview of the evidence surrounding the impacts of poverty on youth and young families, and the benefits of promoting family economic stability and mobility for these populations.

While there are a variety of ways to structure direct cash programs to address poverty, EMPath’s latest paper looks at guaranteed income, a meaningful, monthly infusion of cash that comes with no restrictions. Published in June 2024, **“What Works: Guaranteed Income,”** is the third edition of our “What Works” series. The paper is particularly focused on the increased interest in the potential of pairing guaranteed income with another proven intervention—economic mobility coaching.



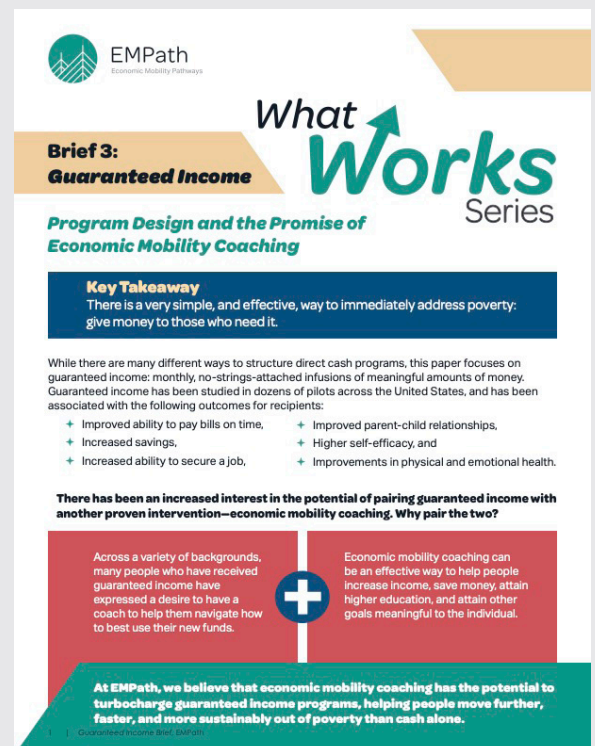
Supporting Youth and Young Parents in Their Economic Mobility Journeys

Jacob Fanning, MA; Alyssa Hernandez, MA;
Natalie Veilleux, MA, LCPC

September 2023



EMPath
Economic Mobility Pathways



EMPath
Economic Mobility Pathways

Brief 3: Guaranteed Income

What Works Series

Program Design and the Promise of Economic Mobility Coaching

Key Takeaway

There is a very simple, and effective, way to immediately address poverty: give money to those who need it.

While there are many different ways to structure direct cash programs, this paper focuses on guaranteed income: monthly, no-strings-attached infusions of meaningful amounts of money. Guaranteed income has been studied in dozens of pilots across the United States, and has been associated with the following outcomes for recipients:

- + Improved ability to pay bills on time,
- + Increased savings,
- + Improved parent-child relationships,
- + Higher self-efficacy, and
- + Improved ability to secure a job,
- + Improvements in physical and emotional health.

There has been an increased interest in the potential of pairing guaranteed income with another proven intervention—economic mobility coaching. Why pair the two?

Across a variety of backgrounds, many people who have received guaranteed income have expressed a desire to have a coach to help them navigate how to best use their new funds.

Economic mobility coaching can be an effective way to help people increase income, save money, attain higher education, and attain other goals meaningful to the individual.



At EMPath, we believe that economic mobility coaching has the potential to turbocharge guaranteed income programs, helping people move further, faster, and more sustainably out of poverty than cash alone.

EMPath's Policy and Advocacy Agenda

EMPath's policy agenda is designed to support sweeping changes that will result in more equitable access to housing, higher education, quality affordable childcare, and training programs. We also seek to ensure that families in need can provide basic necessities for their families.

Through our Voices Advocacy Council (VAC), EMPath engages families in our programs across all stages of our advocacy efforts: from setting policy priorities, to speaking at lobby days, to testifying before legislators.

Together with EMPath staff and our coalition partners, VAC advocacy has resulted in some great policy wins this year.



EMPath Program and Advocacy Staff meet with MA State Senator Nick Collins

Our FY24 Advocacy Wins:	
	✦ Increase cash assistance for families <ul style="list-style-type: none"> • 20M increase in HOME BASE Funding • 7M increase in Funding for Residential Assistance for Families in Transition (RAFT)
	✦ Increased Child and Earned Income Tax Credits <ul style="list-style-type: none"> • Tax credit increase of 72% per dependent child, disabled adult, or senior • Earned Income Tax Credit increase from 30% to 40% of the federal credit for people with income under \$60,000.
	✦ New resources for higher education <ul style="list-style-type: none"> • \$93.5M for Mass Educates which provides free tuition, fees, and up to \$1200 per academic year for books and supplies to students of any age who do not already have a bachelor's degree • \$4M in new funding for Mass Reconnect
	✦ Investments in quality childcare <ul style="list-style-type: none"> • \$475 million for Child Care C3 Grants, which provide monthly operational grants to childcare providers for salaries, compensation, workforce training, and facilities improvements



EMPath participant, Meshell, speaks at the Massachusetts State House in support of increasing cash assistance grants for families



CELEBRATING WITH OUR COMMUNITY

200 Anniversary Gala

In FY24, EMPath hosted our 200-year Anniversary Gala at the historic BCA Cyclorama. Emceed by NBC10 Boston's Latoyia Edwards, this gala was the most successful fundraising event ever held by EMPath, raising over \$400,000. Hundreds were in attendance to help us celebrate the impressive history of EMPath and our two legacy organizations, Crittenton, Inc., and the Women's Education and Industrial Union.

At the gala, we were honored to recognize some of our biggest supporters with the EMPower Award. We celebrated trio of trailblazing women – philanthropic leader and community champion Sandy Edgerley, entrepreneur and philanthropist Shellee Mendes, and Boston Mayor Michelle Wu.

The night would not have been such a success without the support of our community. Thank you to our sponsors, all those who joined us, donated, or spread the word about our event. We can't wait to see you again next spring!



From Left to Right: EMPath Board Chair, D'Arcy Goldman; EMPower Awardees Shellee Mendes and Sandy Edgerley, EMPath President and CEO, Kim Janey; EMPower Awardee Boston Mayor Michelle Wu; Gala Emcee Latoyia Edwards

Shellee's White Party



EMPath was honored to be the beneficiary of Shellee Mendes's Annual White Party in August 2024. As the featured nonprofit, we were able to introduce ourselves and the incredible work of our staff and participants with 100+ attendees. Shellee, her co-host Rhondella Richardson of WCVB 5, EMPath staff and guests all donned crisp all white outfits and enjoyed a sunny afternoon in Braintree, MA, raising over \$15,000. There was delicious food and drinks, dancing, a raffle for original art, gift cards to local restaurants, and gift baskets from Uncle Nearest. Guests were also in the front row of the runway for a fashion show, fittingly put on by a local wedding dress designer.

BOARD OF DIRECTORS

Kim Janey,
*President and Chief Executive
Officer of EMPath*

D'Arcy Goldman, Board Chair
*Former Principal, Humboldt Storage
and Moving*

Pamela Murray, Vice Chair
Consultant

Jennifer Gaudet, Treasurer
Partner, PricewaterhouseCoopers

Sharon Niles, Clerk
Deloitte

Steven R. Argentieri, Director
Counsel, Goodwin Procter LLP

Eileen Casey
*Senior Vice President - Tax and
Finance, The Kraft Group*

Sonia Chang-Diaz*
*Former Massachusetts State
Senator, Second Suffolk*

Mary L. Churchill, PhD
*Associate Dean and Professor of
the Practice, Boston University's
Wheelock College of Education and
Human Development*

Katharine Delaney, CFA
Portfolio Manager, Brown Advisory

Stephanie Garrett-Stearns
*Vice President, Communications
and Fund Development, The
Community Builders*

Donna Jeffers^
Managing Trustee, Edgewood Trust

William Mantzoukas^
President, Platinum Care

Alistair Martin, MD
*Faculty, Center for Social Justice
and Health Equity, Massachusetts
General Hospital*

Shellee Mendes*
Owner and Stylist, Salon Monet

Patricia Jones Mullin, CCM^
Finance

Sharon Niles^
Managing Director, Deloitte

Robert K. Reilly
*Former Senior Vice President of
Fidelity Real Estate Company*

Melissa Tansey
*Director, Women Investors, Fidelity
Investments*

Eddie Walker
*Vice President of Medicare,
Point 32 Health*

LaShauna Walker
*Assistant Director, Class & Affinity
Giving, Massachusetts Institute of
Technology*

Executive Team

Kim Janey
President and Chief Executive Officer

Mary D. Coleman, PhD
*Senior Vice President and Chief
Operating Officer*

Richard Gair
Chief Financial Officer

Ruthie Liberman, MPA
Vice President of Public Policy

Jennifer Lowe, PhD
*Vice President of Shared Learning and
Member Networks*

Tara O'Neill-Rosales, Esq.
*Vice President of Housing and
Innovative Economic Programs*

Ashley Winning, MPH, ScD
*Vice President of Research and
Evaluation*

^Term concludes November 2024

*Term begins November 2024

THANK YOU TO OUR GENEROUS SUPPORTERS

\$250,000+

D'Arcy Goldman

\$100,000+

Anonymous

Sandy & Paul Edgerley

\$50,000 - \$99,999

Donna A. Jeffers

\$20,000 - \$49,999

Steve Barnes

Carson Biederman

Elizabeth S. Boveroux

Eileen Casey

David & Nina Fialkow

Theresa & Nathan Roy

Brian & Stephanie Spector

\$10,000 - \$19,999

John Connaghton

Ami Kuan Danoff

Karen Hale

Jonathan Kraft

Mindy & Reuben Munger

Anne F. St. Goar & Shippen Page

\$5,000 - \$9,999

Anonymous

Kathleen & Kevin Beatty

Anne Covert

Jennifer Gaudet

Kim Janey

Melissa Weiner Janfaza

& Andy Janfaza

Laurence Kantor

William Mantzoukas

Robert A. Moeser

Claire Newton & Ted Maloney

Rob & Erin Reilly

Melissa Tansey

Peter Zane

\$1,000 - \$4,999

Priya Achaibar

Anonymous

Dorothy Ahle

& Christian Kreilkamp

Steven Argentieri

Rachael Bradley

Heidi Brooks & Javit Drake

Susan O. Bush

Rachel D. Chagnon

Edmond Charrette

Courtney Church-Goldthwait

Mary Churchill

Mary Coleman

Lisa Davis

Katie and Tim Delaney

Wynter Duncanson

Mary Jean F. Farrington

Richard Geoffroy

Patricia Harris

Carolyn Hayes

Dotty Hayes

Peggy & Dick Issenberg

Nancy Keating

Sandra Larson

Gregory Lewis

Helene Lieb

Jennifer Lowe

Luis de Luzuriaga

Dolores Martin

Richard McCready

Shellee Mendes

Ben Allen & Anna Mudd

Louise Murray

Pam Murray & Jay MacLaughlin

Sharon Niles

Karen Osborn

David O'Sullivan

Eric Paley

Fatima E. Penrose

Audrey E. Reny

Gordon & Barbara Russell

John Schiffmann

Benson Shapiro

Lauren Smith

Kostas Splagounias

Eric Tencer

Wendy & Wallace Watson

Mary Werler

\$500 - \$999

Louise Todd Ambler

Katie Amoro

Anonymous

Anonymous

Marsha Cargill

Hannah Carliner

Linda J. Felter

Nicole Frattura

Stephanie Garrett-Stearns

Julia Gittleman

Andrew Goodale

Mackenzie Hall

Carl Hatfield

Adam Hinds & Alicia Christoff

John Kain

Brian Kearns

Saumya & Vishal Khanduja

Kerry Lear

Zaks Lubin

Christina Marchand

Betty Morningstar

John H. Mudd

Barbara S. O'Connell

Susan Osborn

Chris Osgood

Edward H. Pendergast

Tamara Sitkoff

Edward Walker

Barbara Freedman Wand

\$250 - \$499

Linda Ayers

Roseanne & Kevin Barney

Rose Carpenter

Lisa Coll

Suzanne Cooper & Stuart Jacobson

Judith Felton

Maya Grevatt

Joanne K. Hilferty

Anne Kirby

Katherine F. Kopp

THANK YOU TO OUR GENEROUS SUPPORTERS

Ruthie Liberman & Danny Watt
M. Chrysa Long
Brickman Malham
Alison McAlear
Lance McBrayer
Constance Otradovec
Nick Panagiotopoulos
Camay Pascucci
Richard Platt
Nicholas Sirianni
Michael & Kate Sutphin
Susan M. Tracy
Michael Treisman
Anne Turner
Edward J. Walker
Pamela Kading Webb
Linda Whitlock
Jennifer Whitney
Anna Xia

\$0 - 249

Anonymous
Julie Arnheiter
Robert I. Bechek
Curtis Below
Pamela Borkowski
Dorothy E. Bourassa
Carol Bowen
Bernice E. Bradin
Dana Bradley
Lillian Brandao
Nancy V. Brown
Lauren Doty Brown
Holly & Dan Burnes
Eleanor S. Butler
Kerry Cabral
Naomi L. Cameron
Leon Cantor
Rose Carpenter
Danielle Casavant
Sonia Chang-Díaz & Bryan Hirsch
Carole Charnow
Michelle Christian
Karen Coley Christiansen
Diane Clark

Caren Connelly
Sharon Cooper
Mary Jeanne Coughlan
Deborah Cox
Tuere Crawford
Cynthia Dantas
Calee de'Loach
Susan E. Foster
Marvin Fralish
Richard Gair
Heather Gelchion
Jennifer Girvin
Liz Gomes
Milena Gostanian & Gerard Cox
Amy Graham
Michael Granger
Marissa Graziano
James Grevatt
Brian Hale
Lisa Hasko
Kym Barrett Howard
Liza Hubbard
Nomin Jargalsaikhan
Dan Kurzberg
Arlene Lieberman
Glenn Lucas
Nicki Ruiz de Luzuriaga
Betty Sweaney Lykins
Sheila Magee
Katherine M. Mainzer
Paul Makris
Christopher Marx
Cara Mattaliano
Christine McCormick
Judith B. McDonough
Susan Miskell
Patricia Jones Mullin
Alexandra Natsis
Kymie Nichols
Judith H. Obermayer
Barbara E. Ogden
Caroline Pacewicz
Linda Richardson Pass
Gabrielle Peabody
David Pilbeam

Alkia Powell
Adele Pressman
William F. Ray
Katrina Raysor
Collin Reik
Stephen L. Richter
Tonya Riggins
Aron Roberts
Denise Robinson
Vernon Robinson
Brenda Rodriguez
Mike Ross
Carol Savage
Robert Seifert
Jonnette Simmons
Ellie Sullivan
Kimberly Sutherland
Jay Tansey
Lisa Theoharides
Catherine K. Tice
Sharon Tully
Jonah Watt
Noam Watt & Shaina Morrel
Gretchen Weismann
Kathryn Winning
Jialan Z.
Khatantuul Zorig

THANK YOU TO OUR CORPORATE AND FOUNDATION DONORS

\$250,000+

Michael & Susan Dell Foundation
Rappaport Family Foundation
The Kini Fund

\$100,000+

John Hancock Financial Services, Inc.
Kellogg Foundation
Nordblom Family Foundation
United Way of Massachusetts Bay
and Merrimack Valley

\$50,000 - \$99,999

Annie E. Casey Foundation
Mabel Louise Riley Foundation
State Street Corporation
Women's Foundation of Boston

\$20,000 - \$49,999

Suffolk Cares
Lincoln & Therese Filene Foundation
Liberty Mutual Foundation
G. Gorham Peters Trust
Richard and Susan Smith Family Foundation

\$10,000 - \$19,999

Frederick A. Bailey Trust
Cambridge Community Foundation
James F. Casey Fund
Deloitte Consulting, LLP
Alice Willard Dorr Foundation
Eastern Bank Foundation
Highland Street Foundation
Kempenstein Family Charitable Fund
New England Patriots Foundation
One8 Foundation
Pearson Foundation Fund
Point32 Health
PricewaterhouseCoopers LLP
Samuels & Associates
Charles Sanders Trust
The Carl and Ruth Shapiro Foundation

Anna B. Stearns Charitable Foundation

\$5,000 - \$9,999

Bushrod H. Campbell & Adah F. Hall Charity Fund
Citizens Bank Charitable Foundation
The Elizabeth Grant Fund
Hastings-Plummer Fund
One Digital
The Workforce Solutions Group
Webster Bank

\$1,000 - \$4,999

Boston Estate Planning Council
Boston Help Desk
Brown Advisory
Cambridge Savings Bank
Cambridge Trust Charitable Foundation
The Davis System
Employee Benefit Solutions
Laura Sibbel Fiske Trust
Give with Liberty
Hecht-Sabin Family Fund
Maebe Foundation
Red Sox Foundation
Amelia Silliman Rockwell & Carlos Perry Rockwell Fund
Silver Cloud Fund
The People Helping People Network
Town Fair Tire Foundation

\$500 - \$999

Alchemy Foundation
First Baptist Church of Poughkeepsie
Liberty Square Group
Massachusetts Institute of Technology
Social Ventures Partners Boston

0 - \$499

Amb Associates LLC
Inclusive Eats
J.P Licks* In-Kind gift
Nurtury Early Education
Pledgling Foundation



ECONOMIC MOBILITY BRIDGE®

FAMILY STABILITY		WELL-BEING		FINANCIAL MANAGEMENT		EDUCATION & TRAINING	EMPLOYMENT & CAREER	
Housing	Family	Physical & Mental Health	Networks	Debts	Savings	Educational Attainment	Earned Income*	Job Quality
At least four of the following are true: <input type="checkbox"/> I have good living conditions <input type="checkbox"/> My name is on a lease/mortgage <input type="checkbox"/> My home is unsubsidized <input type="checkbox"/> My home costs 30% or less of my income <input type="checkbox"/> I own my home	My family needs are supported enough for me to... ...fully engage in work, school, and home life [Or I have no children or dependent family members]	My physical and mental health needs are met enough for me to... ...fully engage in work, school, and home life	The networks I can rely on for resources, guidance, and support are... ...strong and diverse	I pay down all balances monthly and have no outstanding debt other than mortgage or education loans [Or I have no debt balances]	I have savings of more than 3 months' expenses; I am building for my future	I have earned a Bachelor's degree or higher and/or professional license	I earn more than 80% AMI Household Size of: 2: ≥ \$104,200 3: ≥ \$117,250 4: ≥ \$130,250	My (main) job offers: <input type="checkbox"/> benefits <input type="checkbox"/> predictable hours <input type="checkbox"/> opportunities to advance
Three of the above are true	...mostly engage in work, school, and home life	...mostly engage in work, school, and home life	...good	I am current on all payments and am paying more than minimum on at least one account	I have savings of up to 3 months' expenses	I have earned an Associate's degree or industry-recognized credential	I earn 50-79% AMI Household Size of: 2: \$65,300-\$104,199 3: \$73,450-\$117,249 4: \$81,600-\$130,249	My job offers two of the above
Two of the above are true	...partly engage in work, school, and home life	...partly engage in work, school, and home life	...adequate	I am current on all payments by paying the minimum on all my accounts	I have savings of 1-2 months' expenses	I have completed a job training or training certificate (after high school)	I earn 30-49% AMI Household Size of: 2: \$39,200-\$65,299 3: \$44,100-\$73,449 4: \$48,950-\$81,599	My job offers one of the above
One or none of the above are true	...barely engage in work, school, and home life	...barely engage in work, school, and home life	...limited	I am behind on one or more payments by 1 to 3 months	I have savings of less than 1 month's expenses	I have earned a High School Diploma or GED/HISET	I earn less than 30% AMI Household Size of: 2: < \$39,200 3: < \$44,100 4: < \$48,950	My job offers none of the above
I am not permanently housed at this time	My family needs are not supported enough for me to engage in work, school, and home life at this time	My physical and mental health needs are not met enough for me to engage in work, school, and home life at this time	I feel alone and/or my networks are unhelpful at this time	I am behind on one or more payments by over 3 months [Or I do not know my debt situation at this time]	I have no money saved at this time.	I have earned less than a High School Diploma or GED/HISET at this time	I do not have a job, or I am unable to work, at this time	

*Income ranges from HUD's FY2024 Income Limits for the Boston-Cambridge-Quincy, MA-NH HUD Metro FMR Area

THINKING ABOUT THE FUTURE

MAKING DECISIONS IN CONTEXT



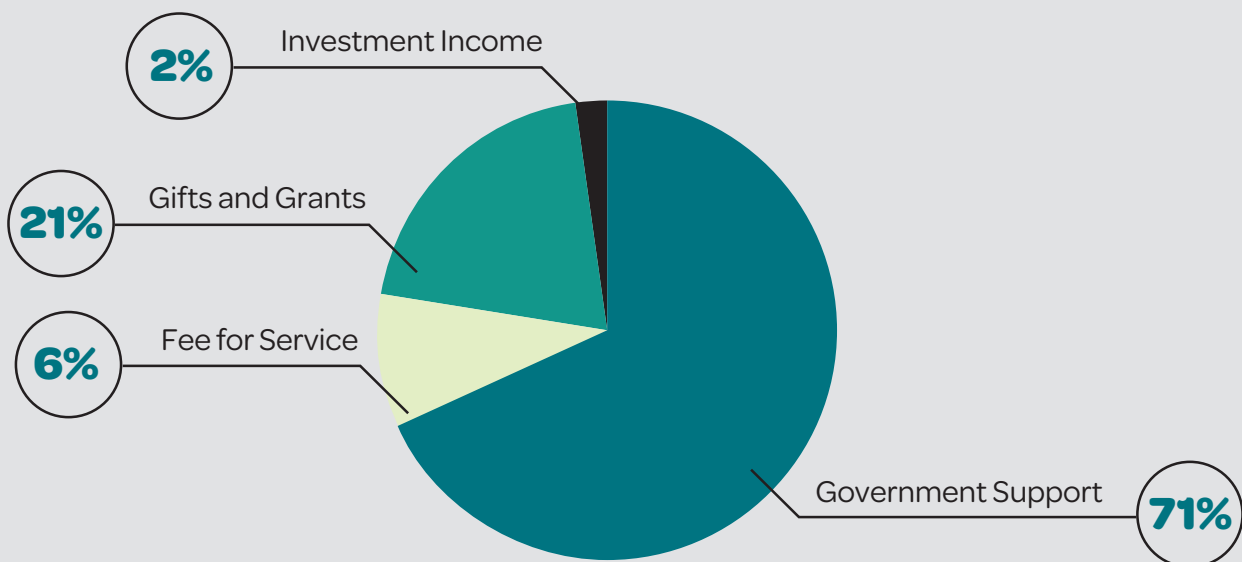
In FY25, our Bridge to Self-Sufficiency is evolving to become the Economic Mobility Bridge®. This Bridge includes several new updates, including a new focus on asset development and the addition of a new sub-pillar to capture the importance of job quality for upward mobility. Keep an eye out on our website in early 2025 for additional details and resources related to this latest iteration of the Bridge: EMPathways.org/Bridge



STATEMENT OF ACTIVITIES

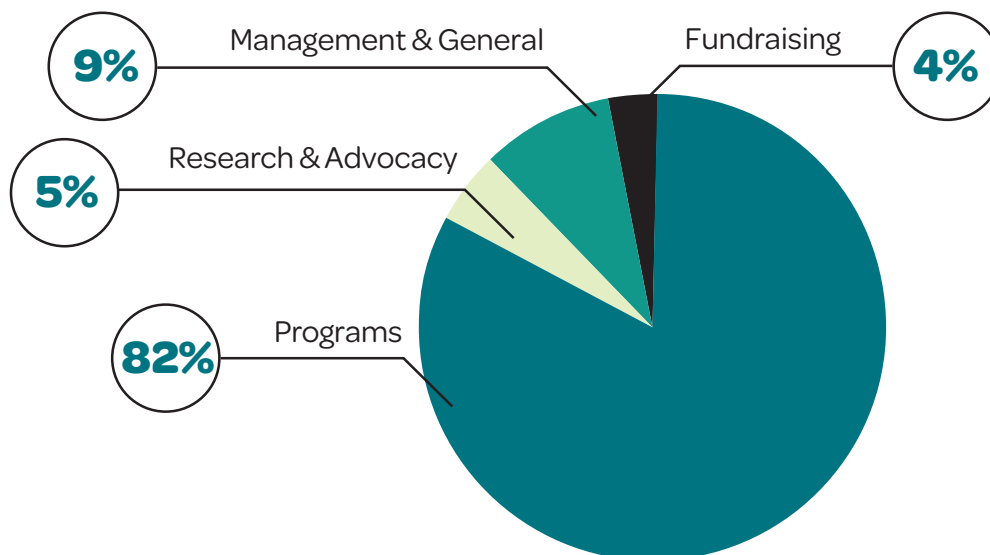
ASSETS	6/30/2024	6/30/2023
Current Assets	\$ 2,741,711	\$ 2,660,415
Investments	\$ 7,864,699	\$ 7,763,034
Other Assets	\$ 2,286,855	\$ 2,698,185
Property, Plant and Equipment, Net	\$ 2,543,129	\$ 2,618,148
TOTAL ASSETS:	\$ 15,436,394	\$ 15,739,782
LIABILITIES AND NET ASSETS		
Current Liabilities	\$ 1,568,463	\$ 1,388,680
Other Liabilities	\$ 2,473,105	\$ 2,874,435
TOTAL LIABILITIES	\$ 4,041,568	\$ 4,263,115
Without Donor Restrictions	\$ 6,939,842	\$ 7,125,691
With Donor Restrictions	\$ 4,454,984	\$ 4,350,976
TOTAL NET ASSETS	\$ 11,394,826	\$ 11,476,667
TOTAL LIABILITIES AND NET ASSETS	\$ 15,436,394	\$ 15,739,782

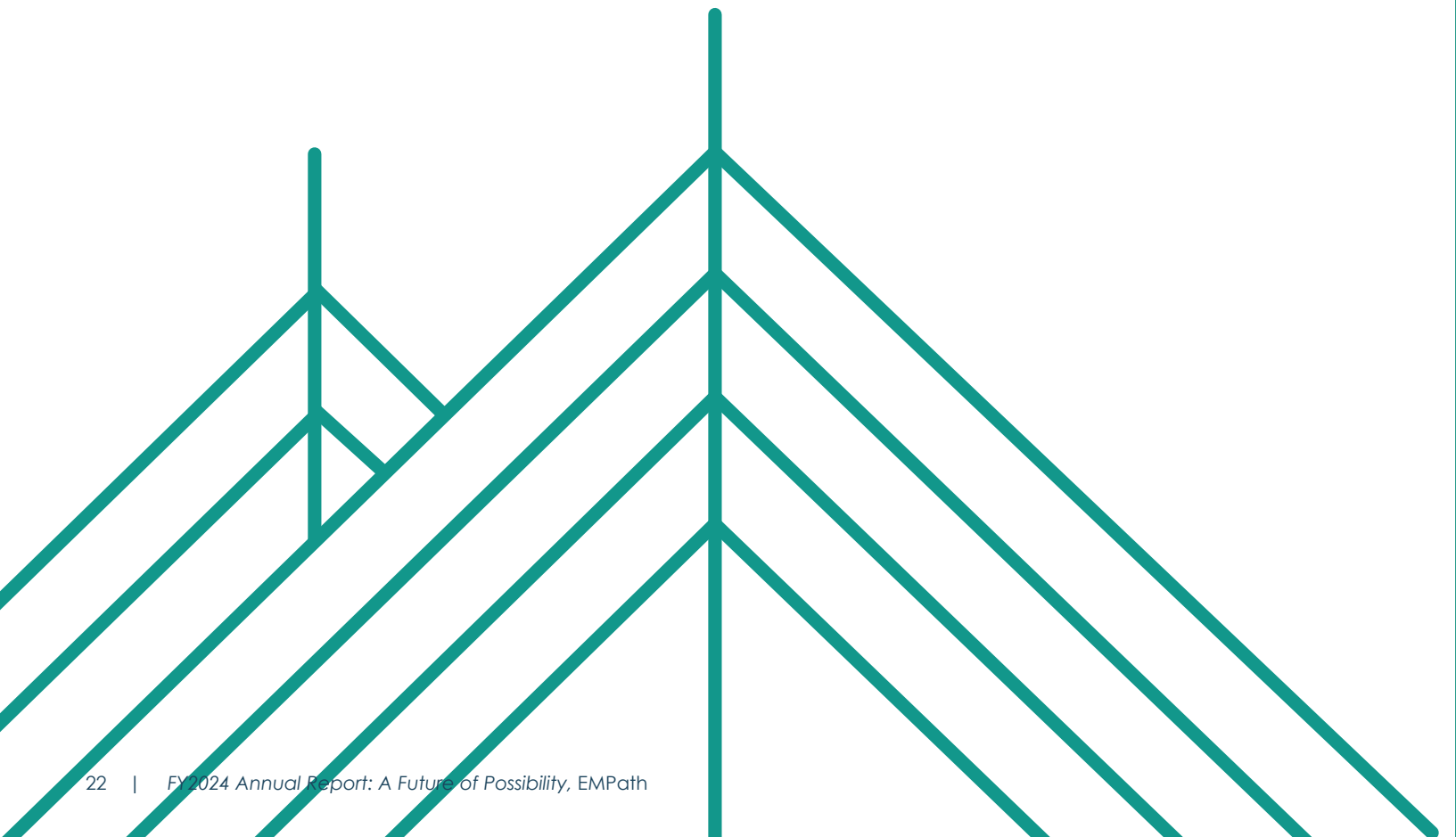
Sources of Operating Funds: \$16,721,689



OPERATING REVENUE		FY24	FY23
Program Service Fees		\$ 12,095,040	\$ 11,324,277
Gifts and Grants		\$ 3,272,348	\$ 2,994,020
In-kind Gifts		\$ 256,501	\$ 188,603
Investment Income Appropriated		\$ 332,000	\$ 294,000
Other Income		\$ 765,800	\$ 755,917
TOTAL OPERATING REVENUE		\$ 16,721,689	\$ 15,556,817
OPERATING EXPENSES			
Program Services		\$ 15,051,772	\$ 14,502,034
Management and General		\$ 1,592,354	\$ 1,449,705
Fundraising		\$ 773,067	\$ 497,962
TOTAL OPERATING EXPENSES		\$ 17,417,193	\$ 16,449,701
Change In Net Assets From Operating Activities		\$ (695,504)	\$ (892,884)
Change In Net Assets From Non-Operating Activities		\$ 613,663	\$ 438,512
TOTAL CHANGE IN NET ASSETS		\$ (81,841)	\$ (454,372)
ENDING NET ASSETS		\$ 11,394,826	\$ 11,476,667

Use of Operating Funds: \$17,417,193







EMPath

Economic Mobility Pathways

Economic Mobility Pathways

308 Congress Street, Floor 5
Boston, MA 02210



@DisruptPoverty



@DisruptPoverty



@DisruptPoverty



@DisruptPoverty

Make a donation to support our work:

