

## East Memorial Christian Academy

2019-2020 High School Profile

[www.emcawildcats.org](http://www.emcawildcats.org)

### Our Community

Prattville began in 1833 when Daniel Pratt arrived on the scene. Acquiring land at the fall line of Autauga Creek, he established the town of Prattville and began manufacturing his cotton gins. Pratt's gin company became the foremost producer of cotton gins in the world. Prattville is known today as the "Birthplace of Industry in Alabama." Although ranked as one of the fastest growing areas in Alabama, Prattville maintains a quaint charm. Flowing fountains, classic older homes, and numerous new, upscale and affordable neighborhoods are all part of an eclectic blend linking Prattville's past to its future.

### Our School

East Memorial Christian Academy is composed of two divisions: elementary, which includes K4-5<sup>th</sup> grades and secondary, which includes 6<sup>th</sup>-12<sup>th</sup> grades. The secondary level is further divided into middle school (6<sup>th</sup>-8<sup>th</sup> grade) and high school (9<sup>th</sup>-12<sup>th</sup> grade) categories.

The school opened in the fall of 2003 with grades K4 through 10<sup>th</sup>, and graduated its first senior class in May of 2006. East Memorial Christian Academy **holds membership in The Alabama Independent School Association and is accredited by AdvancEd** (formerly known as the Southern Association of Colleges and Schools).



### Awards and Distinctions

AISA Blue Ribbon School 2019

AISA Blue Ribbon School 2018

2017-2018 Class 1A AISA President's Award

National Beta Club School of Distinction 2018-2019

AISA Blue Ribbon School 2017

Volunteer of the Year for Service to Persons with Disabilities, 2017 by

The Autauga-Western Elmore / The Arc Chapter

National Beta Club School of Merit 2017-2018

AISA Blue Ribbon School 2016

National Beta Club School of Distinction 2016-2017

2015-2016 Class 1A AISA President's Award

AISA Blue Ribbon School 2015

AISA Blue Ribbon School 2014

AISA Blue Ribbon School 2013

2012-2013 Class 2A AISA President's Award

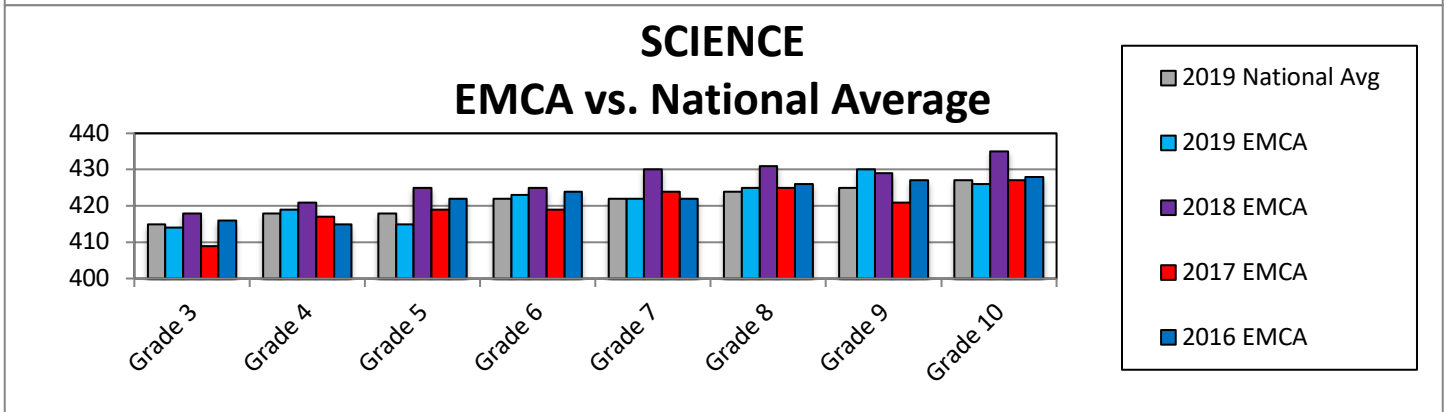
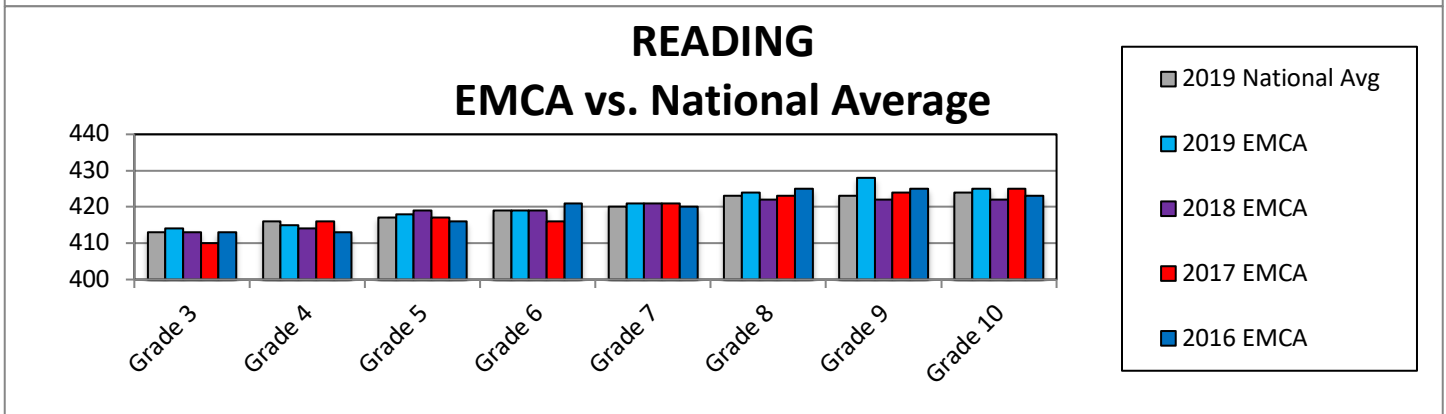
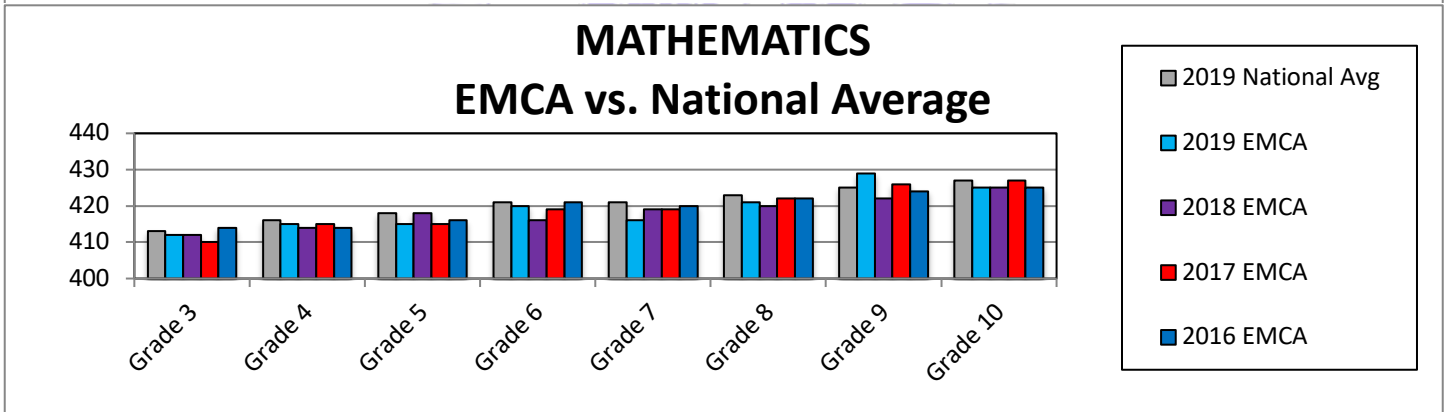
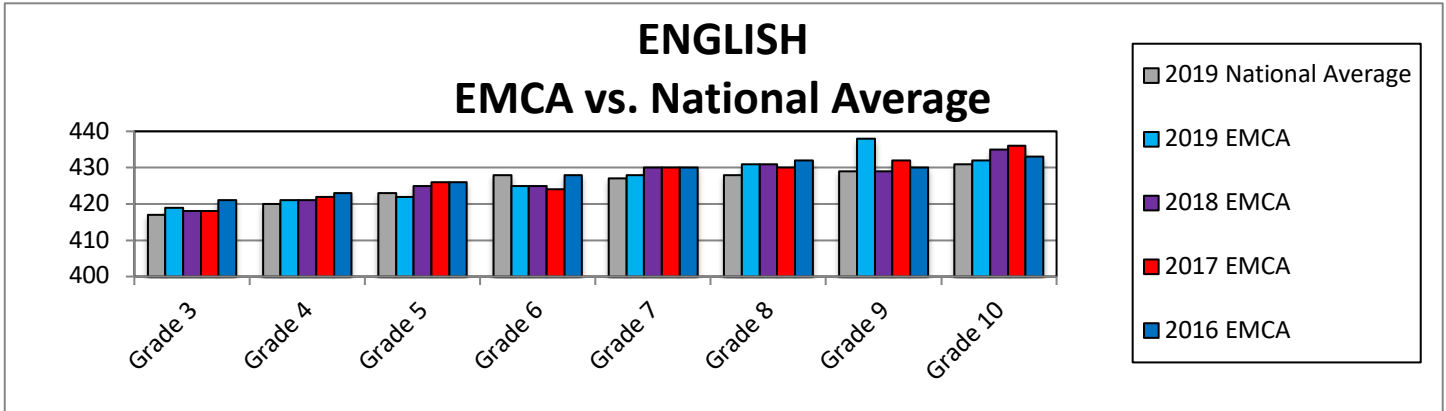
AISA Blue Ribbon School 2012

AISA Blue Ribbon School 2011

AISA Blue Ribbon School 2010

**Standardized Testing:**

EMCA administers the **ACT ASPIRE** Summative Assessment to our students. The following four charts show students' subtest scores compared with the national average for the current year, by grade. Grades 3-10 are the only summative assessments available at this time by ACT ASPIRE.



## **College Attendance History**

### **Class of 2019 – 23 students graduated in the Class of 2019.**

Of the 23 students, 21 students planned to continue their education after high school. Of the 21, 16 matriculated to 4-year institutions, 4 matriculated to community or technical colleges, one enlisted in the armed forces, one entered fire college, and one entered the workforce. Monetary value of scholarships offered to this class was greater than \$1,400,000 to 65% of the Class of 2019.

### **Class of 2018 – 19 students graduated in the Class of 2018.**

Of the 19 students, 16 students planned to continue their education after high school. Of the 16, 11 matriculated to 4-year institutions, 4 matriculated to community or technical colleges, one enlisted in the armed forces, and three entered the workforce. Monetary value of scholarships offered to this class was greater than \$680,000 to 60% of the Class of 2018.

### **Class of 2017 - 26 students graduated in the Class of 2017.**

24 students planned to continue their education after high school. Of the 24, 16 matriculated to 4-year institutions, 7 matriculated to community or technical colleges, and one enlisted in the armed forces. Monetary value of scholarships offered was greater than \$1,150,000 to 81% of the Class of 2017.

### **Class of 2016 - 14 students graduated in the Class of 2016.**

Nine students continued their education after high school. Of the 14, six matriculated to 4-year institutions, three matriculated to community or technical colleges, and two enlisted in the armed forces. Monetary value of scholarships offered was greater than \$140,000 to 43% of the Class of 2016.

### **Class of 2015 - 17 students graduated in the Class of 2015.**

15 students continued their education after high school. Of the 17, 10 matriculated to 4-year institutions, four matriculated to community colleges, two enlisted in the armed forces. Monetary value of scholarships offered was greater than \$580,000 to 59% of the Class of 2015.

### **Class of 2014 - 34 students graduated in the Class of 2014.**

26 students continued their education after high school. Of the 26, 23 matriculated to 4-year institutions, two matriculated to community colleges and one enlisted in the armed forces. Monetary value of scholarships offered was greater than \$1.5 million to 59% of the Class of 2014.

### **Combined data of the classes of 2006-2013:**

#### **Of the 211 graduates:**

- 160 matriculated to 4-year institutions
- 29 matriculated to community or technical colleges
- Eight enlisted in the armed forces

The following college list indicates those institutions attended by East Memorial Christian Academy graduates:

Alabama A&M University	Oakland University, MI
Alabama College of Osteopathic Medicine	Pensacola Christian College
Alabama State University	Samford University
Auburn University	Shelton State Community College
Auburn University Montgomery	South University
Bob Jones University	Southeastern Bible College
Briar Cliff University, IA	Southern Union State Community College
Central Alabama Community College	Southern Baptist Theological Seminary
Coastal Alabama Community College	Stetson University, FL
Clemson University	Trenholm State College
College of Coastal Georgia	Trevecca Nazarene University
Covenant College, GA	Troy University
Emmanuel College, Franklin, GA	Troy University of Montgomery
Faulkner University	University of Alabama
Grand Canyon University	University of Alabama at Birmingham
Huntingdon College	UAB Medical School
Jacksonville State University	University of Alabama at Huntsville
Jefferson State Community College	University of Mobile
Judson College	University of North Alabama
Lawson State Community College	University of South Alabama
Liberty University	University of South Dakota
Louisiana Tech University	University of Southern Mississippi
Maranatha Bible College, WI	University of West Alabama
Marine Mechanics Institute, FL	Virginia College
Mississippi College	Wallace Community College
Mississippi State University	Wartburg College, IA
Montgomery Firefighters College	West Coast Bible College, CA
Montevallo University	Word of Life Institute, FL
North Dakota State College of Science, ND	Word of Life Institute, NY



**Our Curriculum:**

The academic program is organized on the semester schedule. A maximum load is seven credits per year. The students receive 360 minutes of instruction each day.

East Memorial Christian Academy offers two diploma options for graduation: Alabama High School Diploma (Academic Diploma) and Advanced Diploma. Twenty-eight credits are required for graduation, ½ credit = 1 semester, 1 credit = 1 year.

Units (credits) toward graduation begin in Grade 9. We award an Advanced Diploma to those who successfully complete the more rigorous college preparatory track and an Academic Diploma to those who successfully complete the general studies track. These tracks are as follows:

Subject	<b><u>Advanced Diploma</u></b>		<b><u>Academic Diploma</u></b>	
	Units Required	Courses	Units Required	Courses
<b>Bible</b>	4*		4*	
<b>English &amp; Lit</b>	4	9*,10*,11*,12*	4	9*,10*,11*,12*
<b>Mathematics:</b>	4		4	
		Algebra I*		Algebra I*
		Geometry*		Geometry*
		Advanced Algebra II w/ Trig*		Algebra II
		Pre-Calculus*		Algebra III
<b>Science:</b>	4		4	
		Biology*		Biology*
		Physical Science*		Physical Science*
		Advanced Chemistry*		Chemistry
		Anatomy/Physiology*		Anatomy/Physiology
		Physics*		
<b>Social Sciences:</b>	4		4	
		World Geography*		World Geography*
		World History*		World History*
		US History to 1877*		US History to 1877*
		US History 1877 to present*		US History 1877 to present*
		American Government*		American Government*
		Economics*		Economics*
<b>Foreign Language</b>	2		1	
		Spanish I*		Spanish I*
		Spanish II*		
<b>Physical Education</b>	1	Lifetime Sports	1	Lifetime Sports
<b>Computer*</b>	½		½	
<b>Health*</b>	½		½	
<b>Service *</b>	½	(75 documented hours of service)		
<b>Electives</b>	3½	(Must include ½ Fine Arts Credit)	5	(Must include ½ Fine Arts Credit)
<b>TOTAL CREDITS:</b>	<b>28</b>		<b>28</b>	

**\* Honors Classes**

**Dual Enrollment:**

Dual Enrollment is limited to eleventh and twelfth grade students with a GPA of 3.0 or greater. A student may earn no more than two units per year in courses in which he/she has dual enrollment. Prior written approval from the administrator is required.

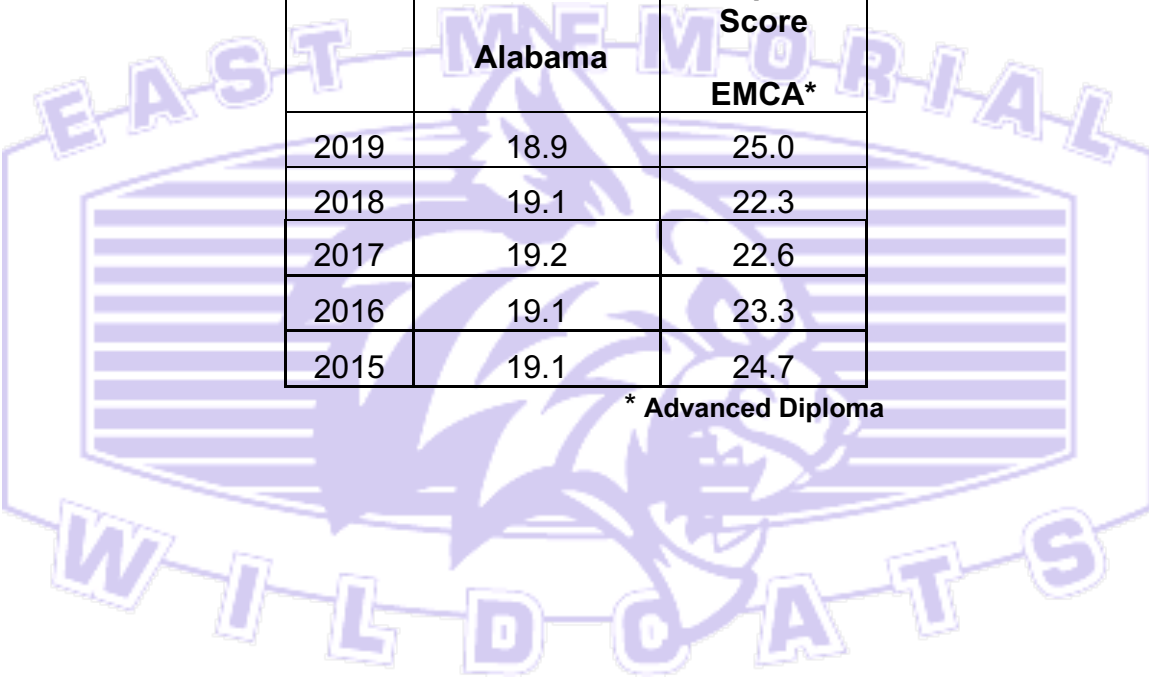
**Grading**

East Memorial Christian Academy assigns letter grades using a 4.0 system. Letter grades are assigned as follows: A= 90-100; B= 80-89; C= 70-79; D= 60-69; F= 59 and below.

**Rank**

School policy dictates that we do not rank our students. East Memorial Christian Academy determines Valedictorian(s) and Salutatorian(s) according to the un-weighted GPA of Advanced Diploma students who have attended EMCA for at least two years (during their 11<sup>th</sup> and 12<sup>th</sup> grades).

**ACT 5-year Historical Test Score data:**



<b>Class of</b>	<b>Average ACT Composite Score Alabama</b>	<b>Average ACT Composite Score EMCA*</b>
2019	18.9	25.0
2018	19.1	22.3
2017	19.2	22.6
2016	19.1	23.3
2015	19.1	24.7

\* Advanced Diploma