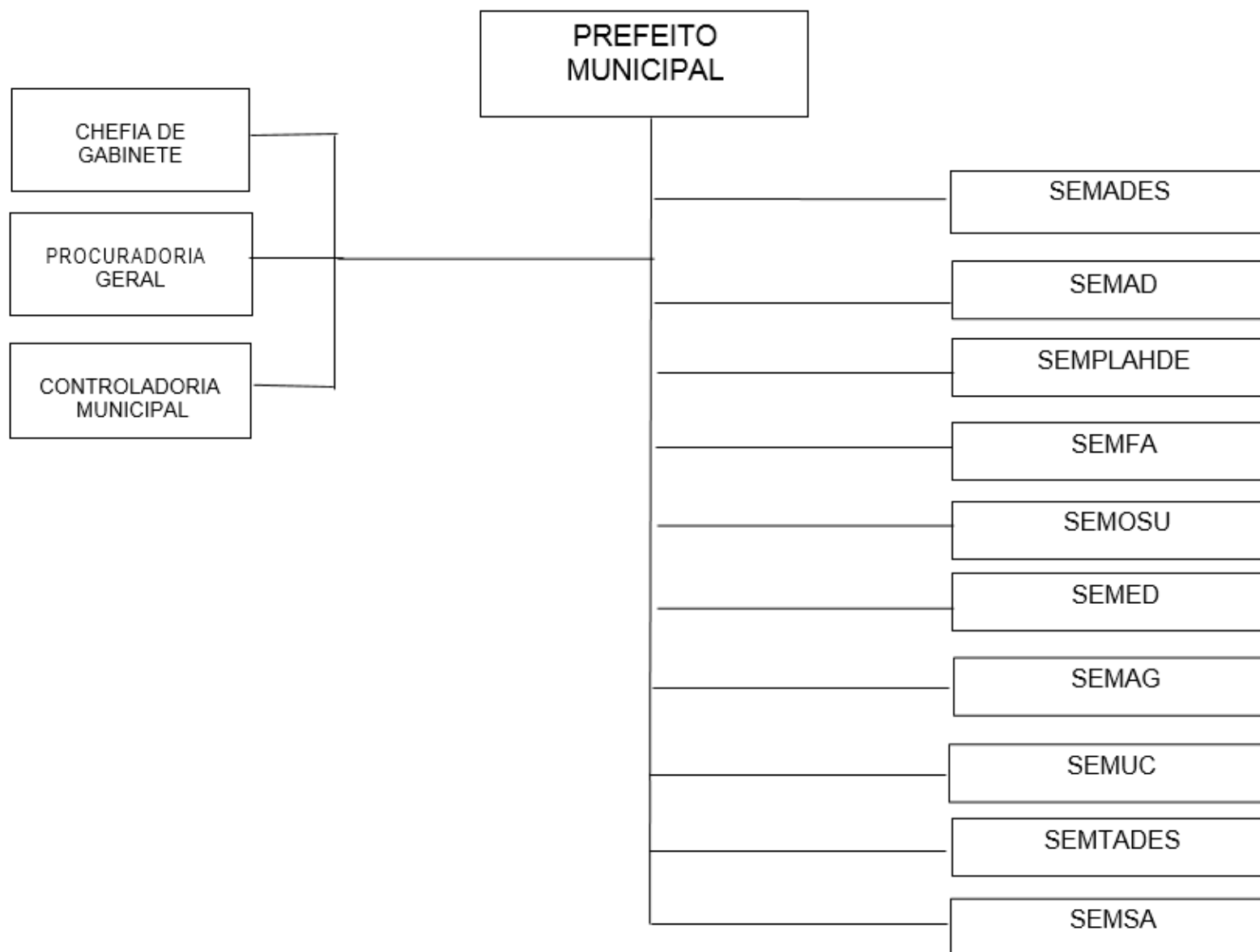


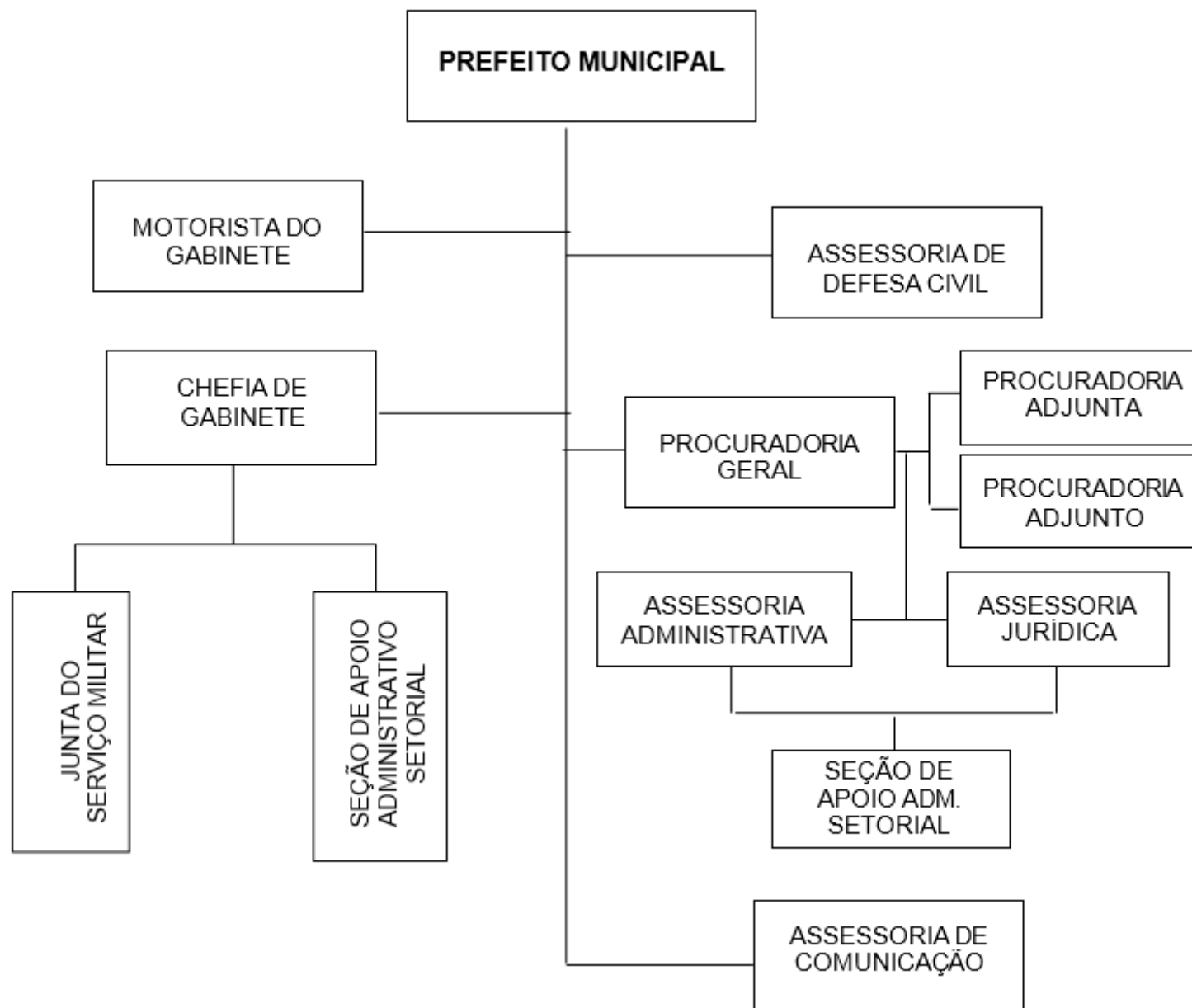


## **ESTRUTURA ADMINISTRATIVA DA PREFEITURA MUNICIPAL DE JOÃO NEIVA/ES**



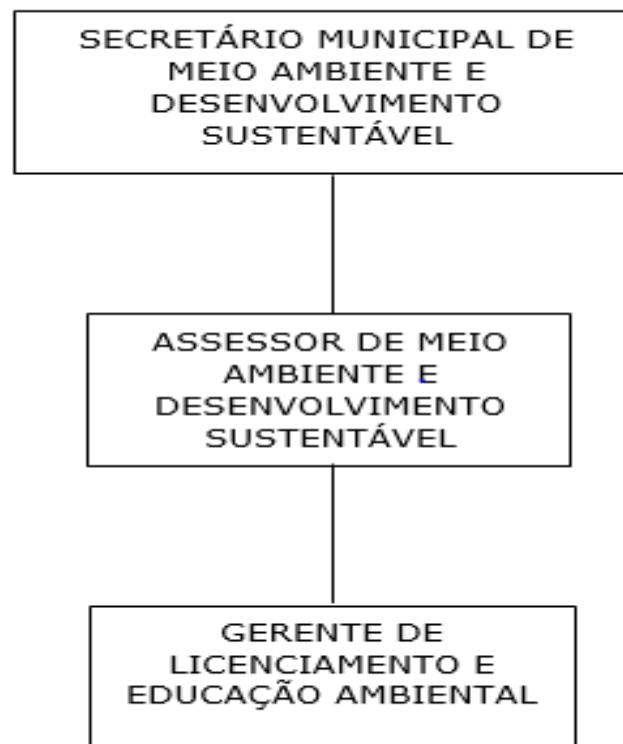


## GABINETE DO PREFEITO



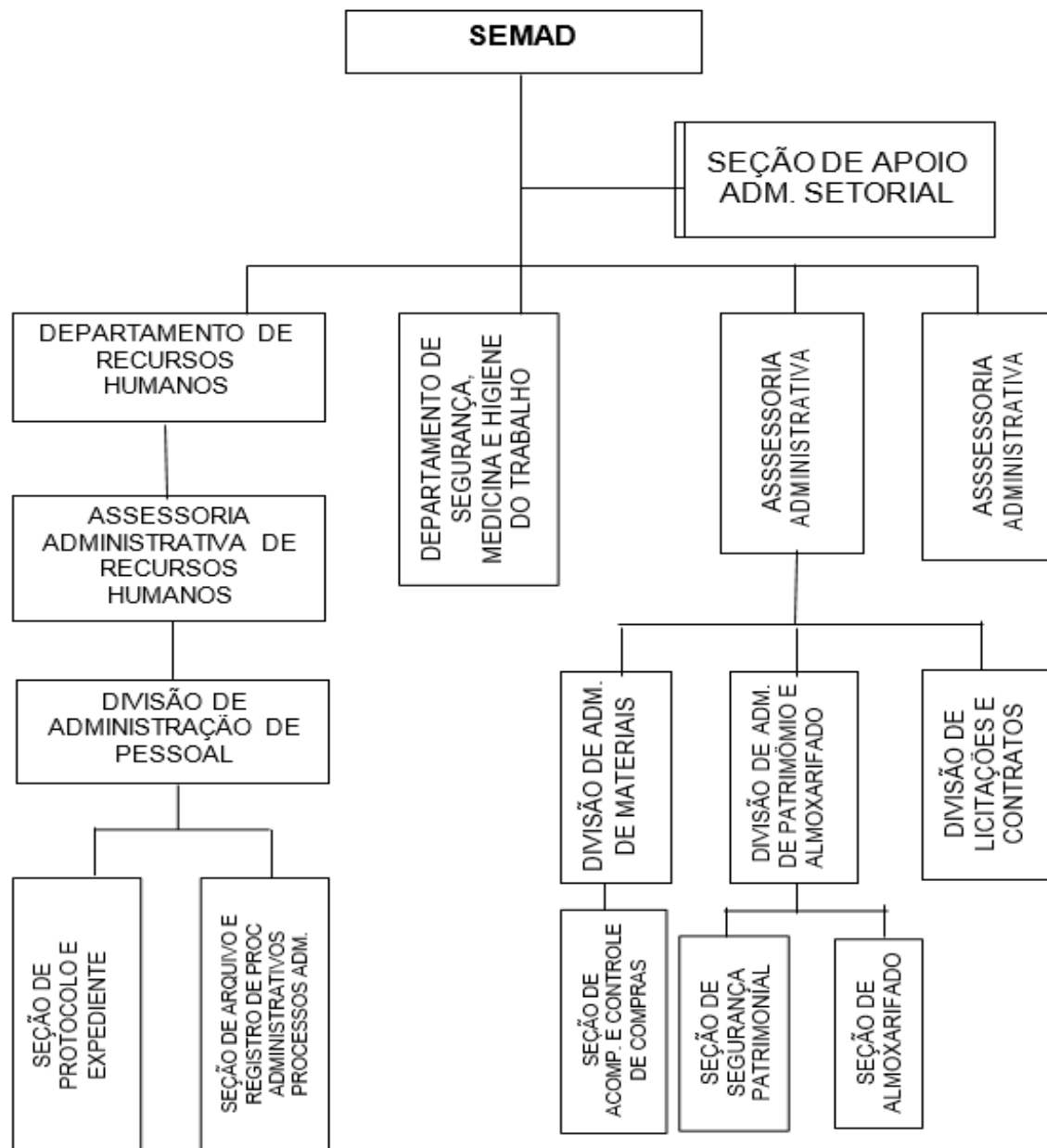


**SECRETARIA MUNICIPAL DE MEIO AMBIENTE E DESENVOLVIMENTO SUSTENTÁVEL (SEMADES)**



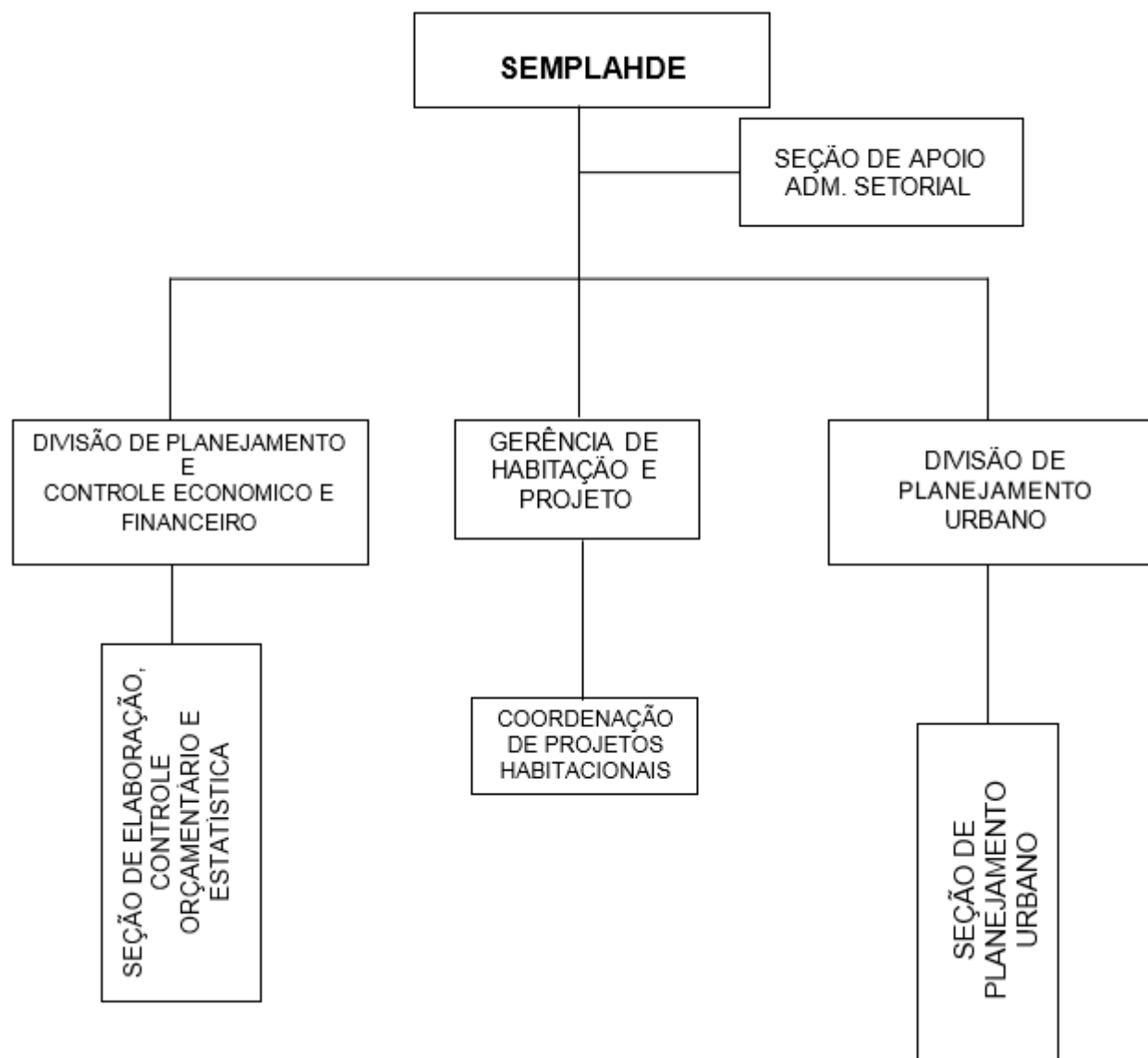


## **SECRETARIA MUNICIPAL DE ADMINISTRAÇÃO - SEMAD**



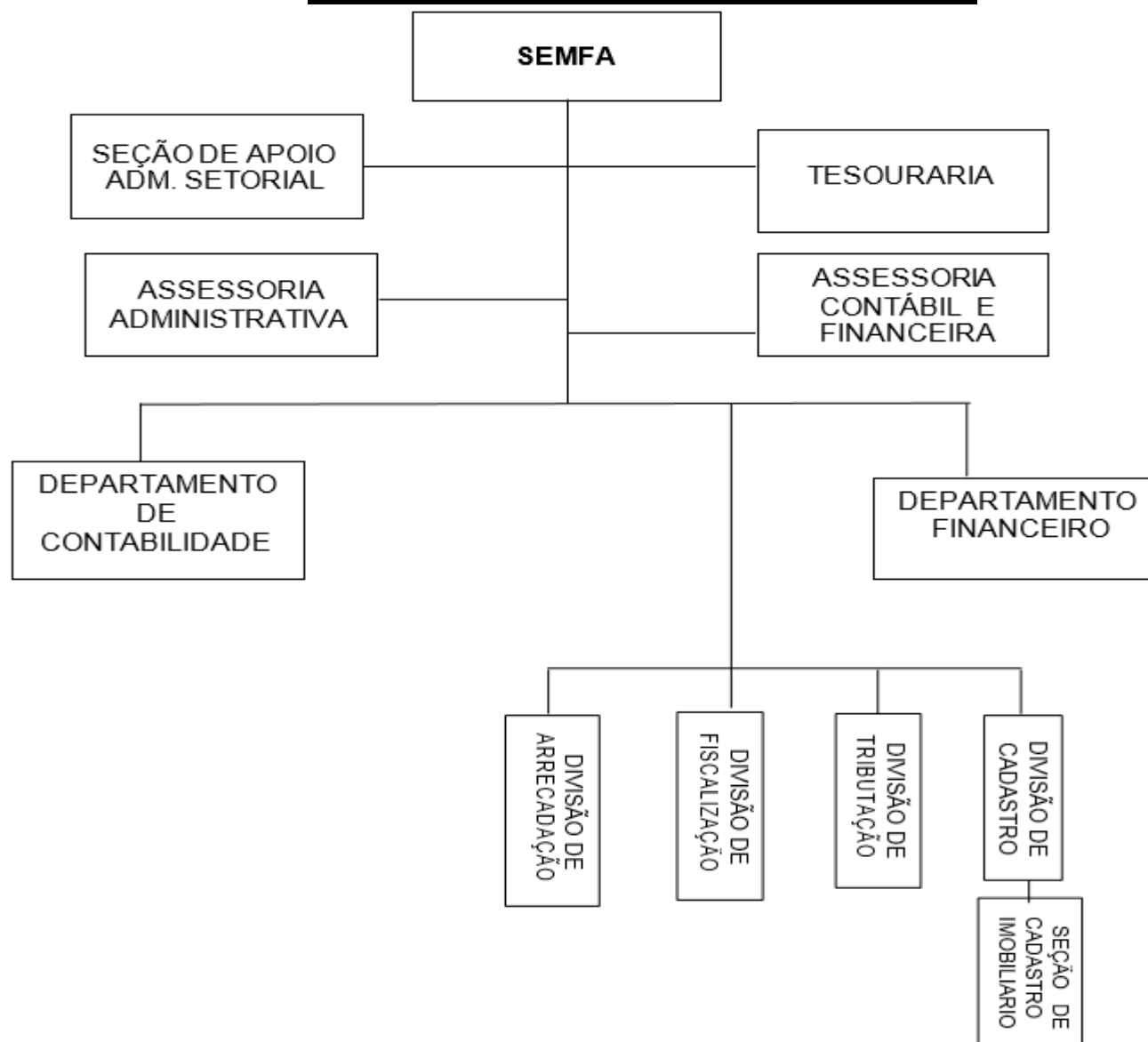


**SECRETARIA MUNICIPAL DE PLANEJAMENTO, HABITAÇÃO E DESENVOLVIMENTO SOCIAL - SEMPLAHDE**



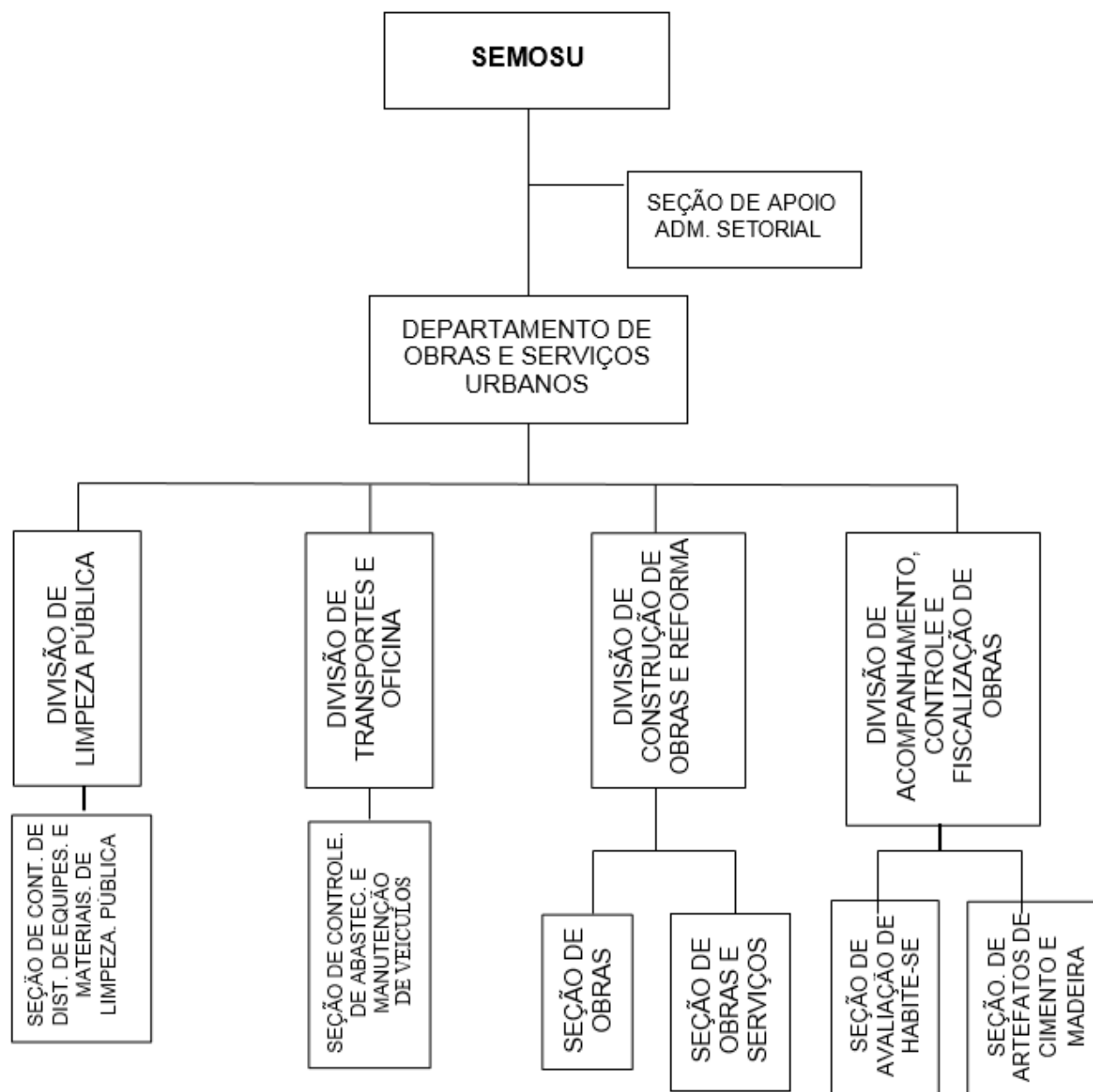


## **SECRETARIA MUNICIPAL DA FAZENDA - SEMFA**



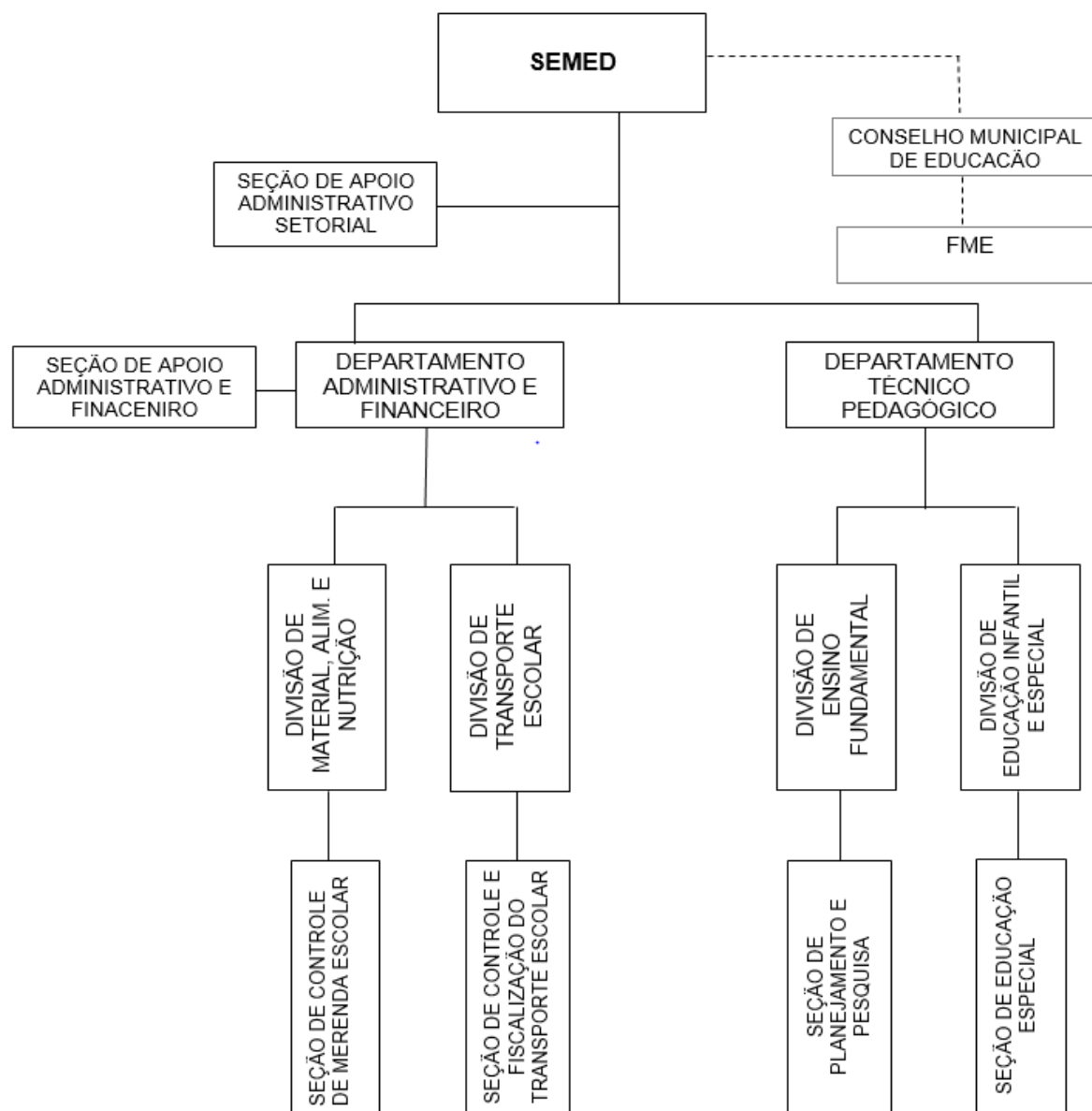


## **SECRETARIA MUNICIPAL DE OBRAS E SERVIÇOS URBANOS - SEMOSU**





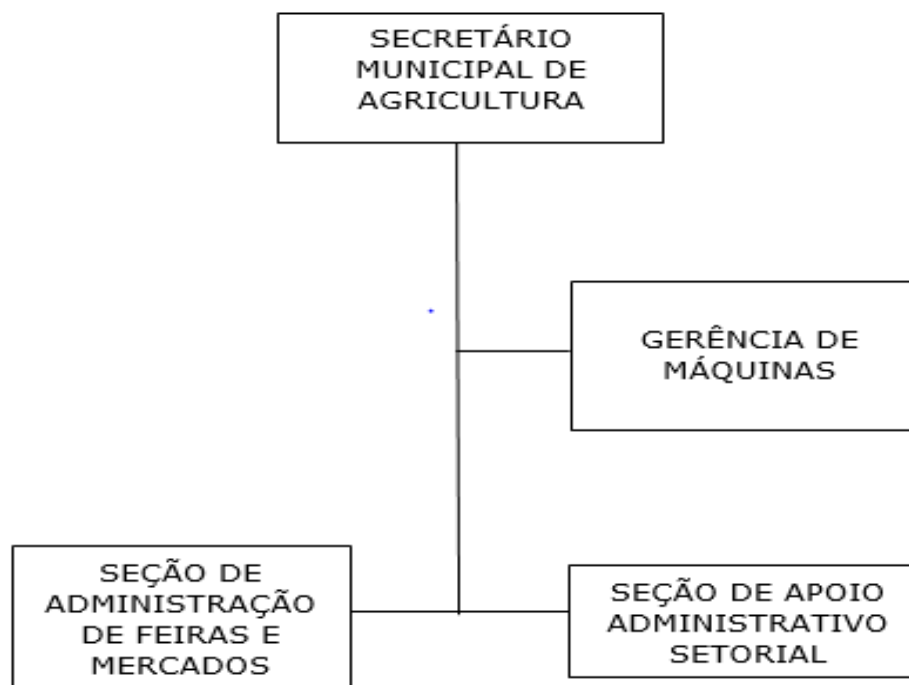
## **SECRETARIA MUNICIPAL DE EDUCAÇÃO – SEMED**





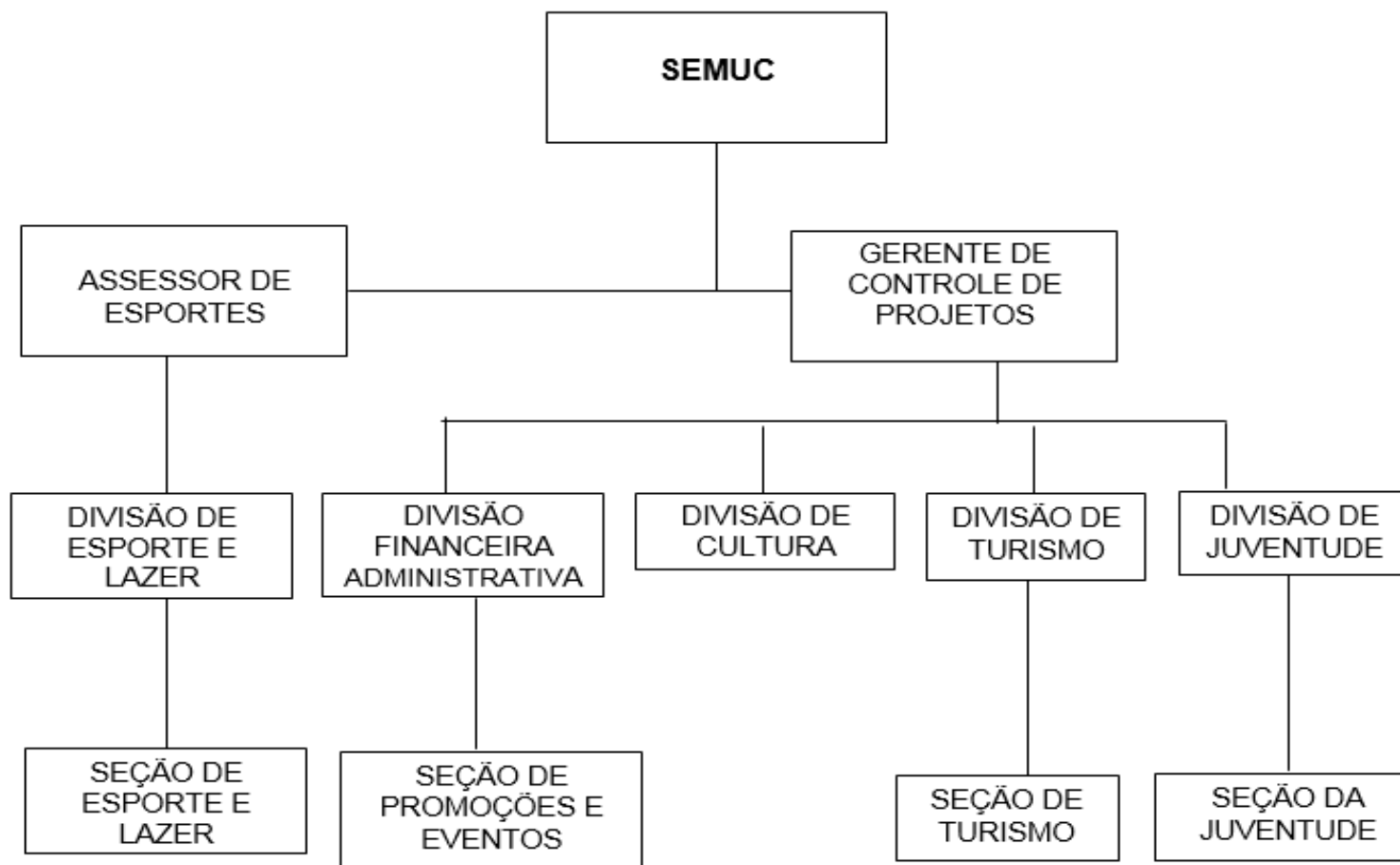


## SECRETARIA MUNICIPAL DE AGRICULTURA (SEMAG)



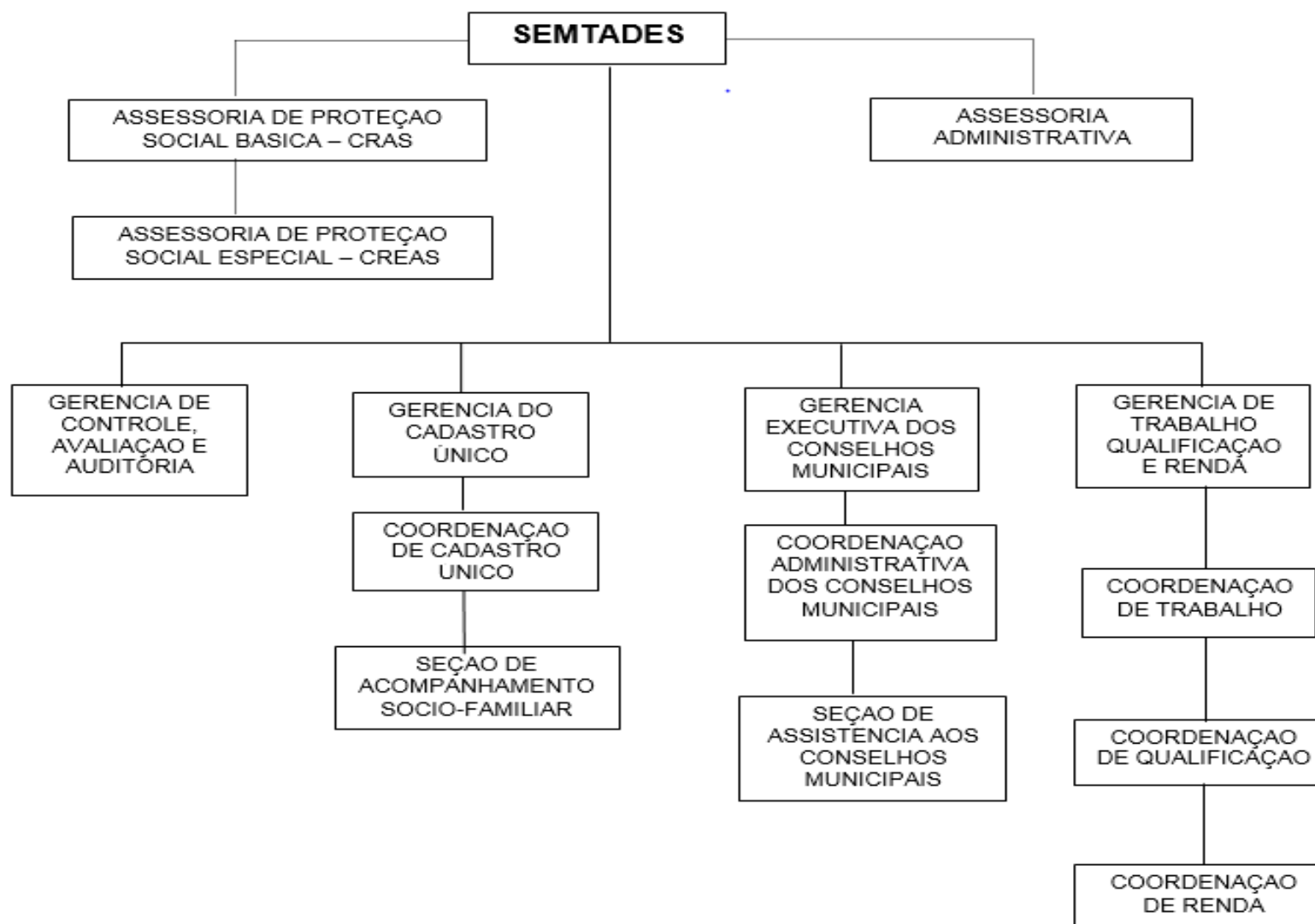


## SECRETARIA MUNICIPAL DE CULTURA - SEMUC



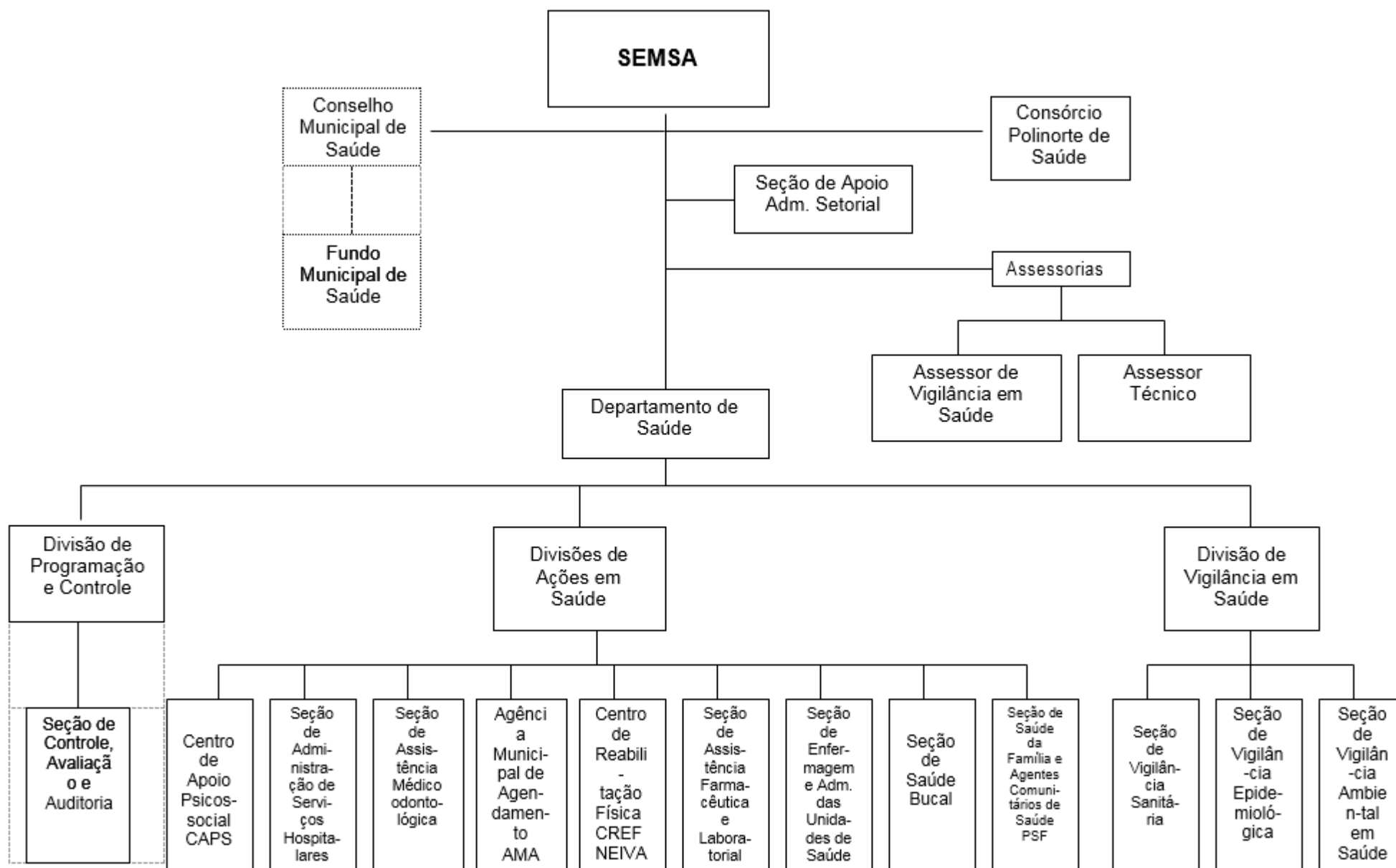


## SECRETARIA MUNICIPAL DE TRABALHO, ASSISTÊNCIA E DESENVOLVIMENTO SOCIAL - SEMTADES



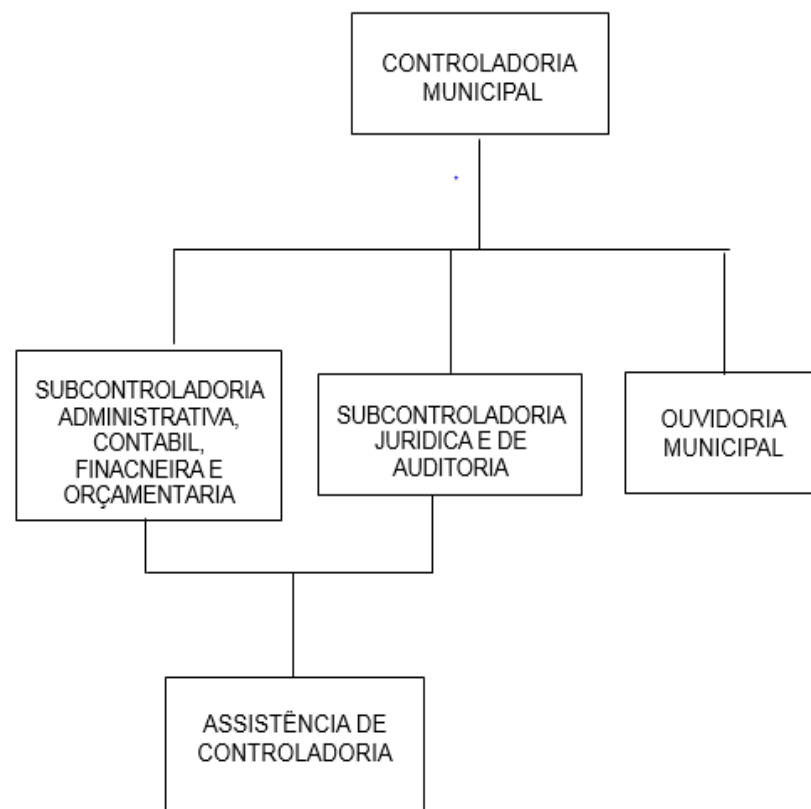


## SECRETARIA MUNICIPAL DE SAÚDE - SEMSA



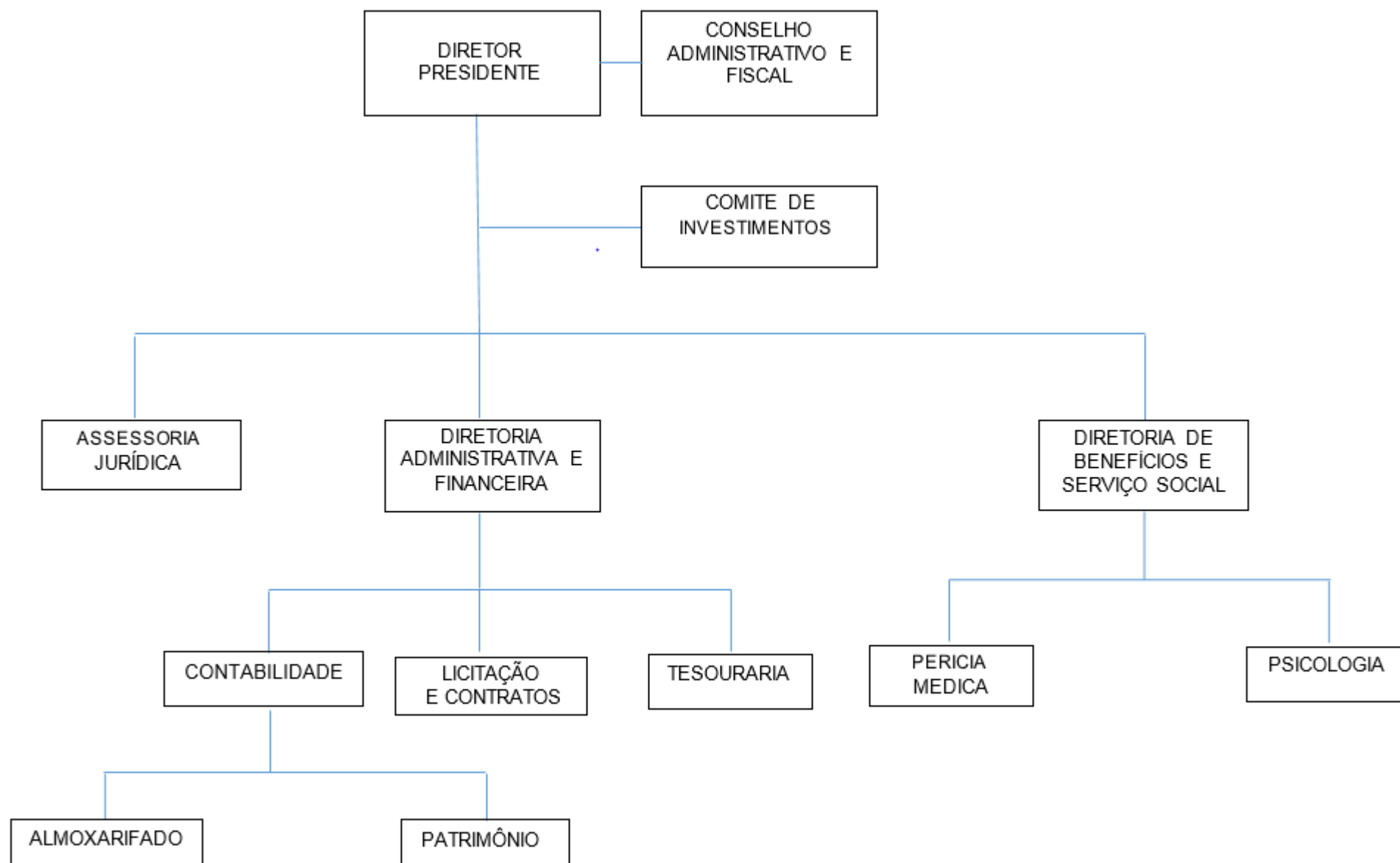


## CONTROLADORIA MUNICIPAL





## **ESTRUTURA ADMINISTRATIVA DO INSTITUTO DE PREVIDÊNCIA DOS SERVIDORES DE JOÃO NEIVA – IPSJON**





## ESTRUTURA ADMINISTRATIVA DO SERVIÇO AUTÔNOMO DE ÁGUA E ESGOTO DE JOÃO NEIVA – SAAE JN

