



April 2020 | Issue 6

Walk This Way to a Healthier You

The popular edHEALTH Walking Challenge returns June 8 - July 4, 2020.

[Learn more.](#)

COVID-19-Related Share-It Communications

edHEALTH provides employee engagement communications to help member school employees navigate and maximize their healthcare benefits. A number of COVID-19-related communications are particularly helpful during these trying times:

- Tips for Navigating COVID-19
- Take Advantage of Telehealth Convenience
- Telehealth Benefit Details

Access edHEALTH's Share-It Communications

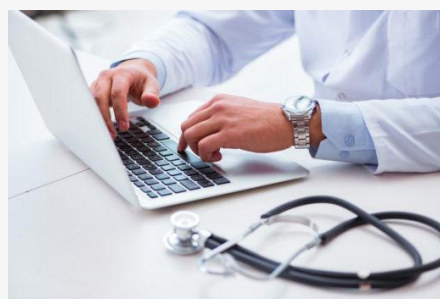
2021 Plan Design Updates

To date, we've received the following plan design requests:

- Higher deductible plan of \$3,000/\$6,000
- Closed provider networks
- 5-tier prescription drug formulary

Plan Design Deadlines

Recognizing the financial and operational



Higher Ed Institutions Facing a Bottom-Line Squeeze Should Look at Their Health Benefits

Before COVID-19, colleges and universities were already facing enormous pressures on their bottom lines. To close budget gaps, higher education institutions should not only boost student recruitment efforts, but also look at cost-curbing strategies, especially in compensation and benefits.

Health insurance for faculty, staff and family members comprises as much as two-thirds of an HEI's budget, and taking a hard look at health insurance costs for faculty, staff and family members is a winning tactic.

Learn
More

impacts of COVID-19, we've extended the plan design option deadline from May 1 to **June 1**. We use these for the rate renewal process; schools do not need to select their plan design options until **September 2020**.

Plan Design Process is Collaborative

Please attend the next Plan Design meeting on Wednesday, May 27 at 1:30 PM.

- Invite your broker/consultant
- Meeting will be virtual

RSVP for Plan Design Meeting



Resources for Potential Member Schools and Their Brokers/Consultants

If you have questions about the expected COVID-19-related impact to claims and stop-loss coverage, see the [Financial FAQs](#) on our website. You must register your name, organization name, and email address to access this information.

Rate quotes for 2021 are available using the [Simple Savings Calculator](#).

Who Should You Contact?

edHEALTH



edHEALTH

- Membership
- Plan Design Changes via Plan Design Committee
- Structure of edHEALTH
- Access to Online Portal
- Elevated Service Issues
- KnovaSolutions/HCMS
- Stability Health – Diabetes Management



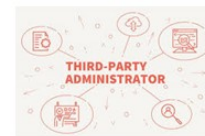
Spring Consulting Group

- High Level COVID-19 Claims Projections
- Working Rates
- Claims Projections
- Actuarial/Underwriting Modeling RE: Plan Designs
- High-Level edHEALTH Budgeting



Your Broker/Consultant

- Plan/Claims-Specific Questions about COVID-19
- SPDs
- School-Specific Reporting
- Setting EE/ER Contributions
- Choosing School-Specific Plan Design
- School-Specific Health Care Budgeting



HPHC/Tufts/
Trustmark/OptumRx

- COVID-19 Claims Options
- Access to Online Reporting (for schools and Consultants)
- Service Issues

Visit Our Website Portal

See edHEALTH's member portal for contact details.

10

www.educatorshealth.org

edHEALTH's Population Health Program Provides Critical Resource During COVID-19

The COVID-19 crisis is driving demand for help from edHEALTH's population health vendor. With a focus on the 5% of the population that comprises 53% of claims, these patients are at high risk for COVID-19. Our partner is set up to help patients during the current lock down while also protecting patient privacy. [Learn more](#).

Easy to Understand Communications

Our business partner provides communications that are easy to understand and customized for each institution. Participating schools report high employee satisfaction and comfort with the program and its protection of patient privacy.

Potential Reduction in High Cost Claims

In order to bend healthcare rate increases, it's critical to reduce claims costs. Information, education, and decision support of this program help decrease unnecessary costs and utilization. The program is currently free of charge to member institutions and we highly recommend that you take advantage of this program. For more information, and to schedule a half-hour implementation call, [contact us](#).

edHEALTH Newsletter Editor, [Cindy McGrath](#) | [Website](#)



Please add info@educatorshealth.org to your contacts so we're recognized as a safe sender.