



March 18, 2021 | Issue 14

Test Your Recall from Our Recent Newsletter

How do captives provide added value to a go-it-alone self-insured healthcare program? For the answer, scroll to the bottom of this newsletter.



Vaccine Education Tools for Employees

The National Alliance of Healthcare Purchasers Coalition produced COVID-19 Vaccines: Get the Facts videos [in English](#) and [with Spanish subtitles](#). We encourage you to share these links with your employees.



Annual Members' Meeting

September 29, 2021
11AM-6PM
Connors Center, Dover, MA

HUMAN RESOURCES

How Does HR's Role Become More Interesting and Rewarding After Joining edHEALTH?

Time – it often seems like there's not enough of it to get everything we want to do completed. College and university Human Resources departments are especially stretched thin with pandemic-related responsibilities and crises. One area where they don't have additional worries and tasks is their edHEALTH employee healthcare program.

"The amount of work HR departments do when enrolling in – or once they've joined – edHEALTH doesn't increase," said Cindy Bartelson, edHEALTH's Operations Manager. "Instead, it's just different as we assume administrative and troubleshooting tasks and they take on a more strategic role."

Member institution HR staff report high satisfaction with the multiple collaboration opportunities and becoming a more valuable resource for their institution.

Interested in Learning More About edHEALTH?

Call Nancy McConaghy at 1.866.692.7473 ext. 702 or send her [an email](#).

LEARN MORE

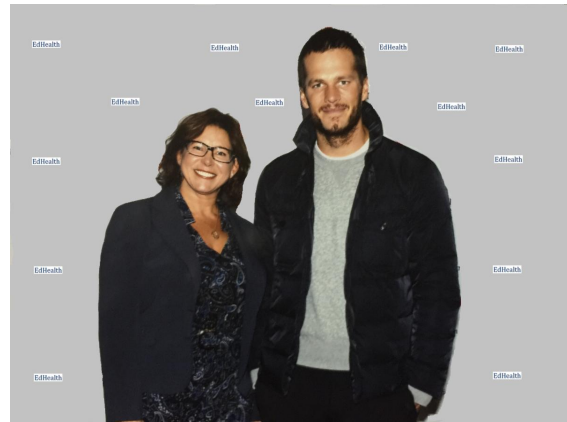


New Lunch and Learn Series Help Faculty and Staff Improve Their Own Well-being

edHEALTH recently launched a new complimentary Lunch and Learn series for member school faculty and staff. These one-hour virtual programs help employees take care of their own well-being. This is an especially critical goal now as, although levels of stress and anxiety are improving, risk of depression and attention levels are significantly worse than before COVID.

The first program provided tips for reducing stress. The next one will help faculty and staff eat well.

LEARN MORE



Passionate About Football - Tracy Hassett Shares Everyday Lessons for edHEALTH

edHEALTH's President and CEO, Tracy Hassett, has been an avid football fan since she was young. It's a sport she's shared with her dad over the years. They watched games on television together when she was a child. As an adult, they share it by phone. Every time the New England Patriots score a touchdown, they call each other. "There's a lot of aspects about football that I apply to our work at edHEALTH," said Tracy.

LEARN MORE

Why is it a Challenge to Control Rising Healthcare Costs? It's the Prices.

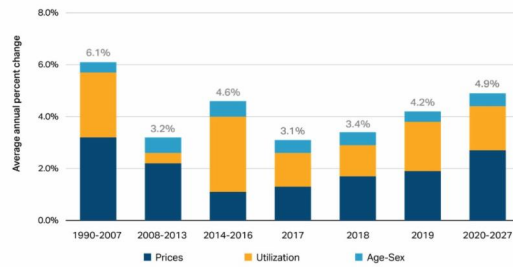
The U.S. is spending nearly 20% of its Gross Domestic Product on healthcare services, which crowds out other needed products and services. Why are

healthcare cost rising so quickly?

Stuart Altman, Ph.D.,
Sol C. Chaikin
Professor of National
Health Policy at The
Heller School for Social
Policy and
Management at
Brandeis University,
shared his insights at
edHEALTH's recent
Thought Leadership Seminar.

Price is projected to be a continued driver of future spending growth.

Factors accounting for growth in health care spending, select calendar years, 1990 - 2027



Price accounts for half of spending growth.
Thus, to meet a 3.1% benchmark, prices can only grow ~1.5% per year.

Source: Centers for Medicare and Medicaid Services, Historical and projected, February 2019.

LEARN MORE

And the Answer Is...

A captive arrangement bends the healthcare cost curve more than self-insuring on your own due to the purchasing power of the coalition. Savings include group-negotiated stop-loss premiums, administrative fees, and drug costs.

"As a captive owner, you have input in the direction of the captive including plan design, which is critically important during these challenging times," says John Burke, Boston College's Financial Vice President and Treasurer. [Learn more](#)



Forward to a Colleague

Forward this newsletter to your colleagues. They can also sign up here.

YES, SIGN ME UP FOR
EDHEALTH'S NEWSLETTER

edHEALTH Newsletter Editor, [Cindy McGrath](#) | [Website](#)



Please add cemcgrath@educatorshealth.org to your contacts so we're recognized as a safe sender.