

# SimNet and LMS Grade Sync

We are pleased to offer single sign-on (SSO) and grade sync between SimNet and your learning management system (LMS) through McGraw-Hill Campus ([www.mhcampus.com](http://www.mhcampus.com)).

McGraw-Hill Campus' free service will work with:

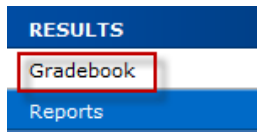
- Blackboard
- Moodle
- eCollege
- D2L
- Angel
- Sakai
- Instructor Canvas

To learn more about McGraw-Hill Campus' free service, please contact your McGraw-Hill sales representative.

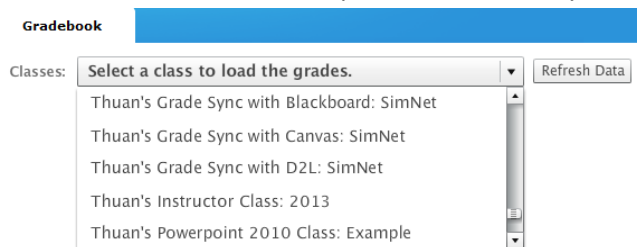
## Steps for grade sync:

**Note:** The steps below can only be completed after you have paired your course and are in SimNet.


- 1) Click on the **Gradebook** menu

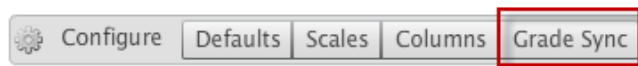


- 2) Select the class from the drop down menu that you would like to sync the grades for

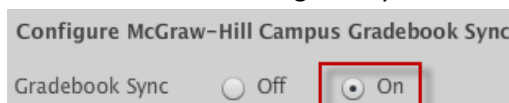


- 3) Click on the **Grade Sync** button

**Note:** If you do not see the MHCampus button, go to the Classes menu and see if this  icon is next to the class that you want to enable the grade sync. If it is not, please pair your LMS class with your SimNet class. Otherwise, please contact the McGraw-Hill Customer Experience Group at <http://mpss.mhhe.com/products-simnet.php> for additional assistance.

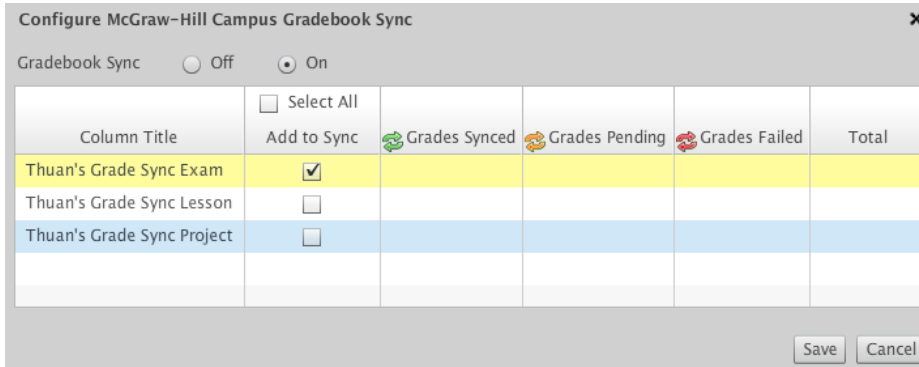


- 4) Select **On** to enable the grade sync

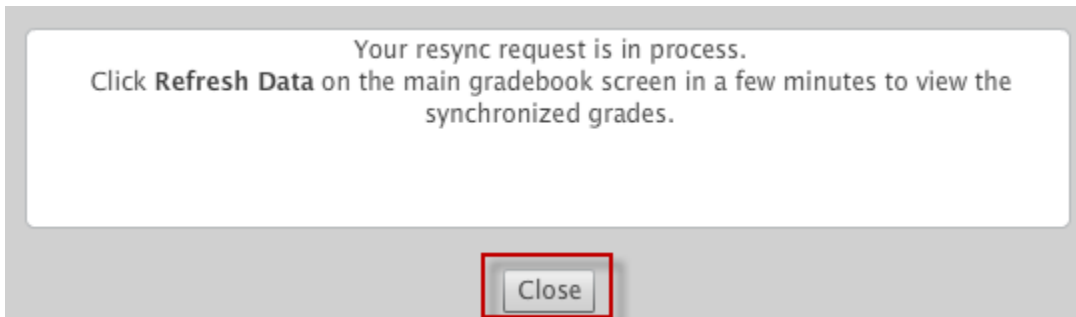


- 5) Check off the assignments to sync to your LMS under the Add to Sync column and click **Save** to proceed

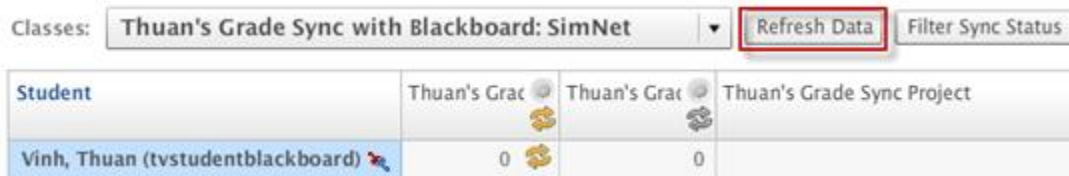
**Note:** When you do this for the very first time, it is recommended that you only select on assignment to sync and verify that it is working before proceeding with the rest of the assignments that you want to sync.



- 6) Click **Close**



- 7) Click **Refresh Data** to see the updated status of the grade sync. Once you see the green Sync Successful status, you can check your LMS gradebook to ensure that the grades have synced.



### **Additional Information:**

- For additional questions, please contact the McGraw-Hill Customer Experience Group at <http://mpss.mhhe.com/products-simnet.php>.