

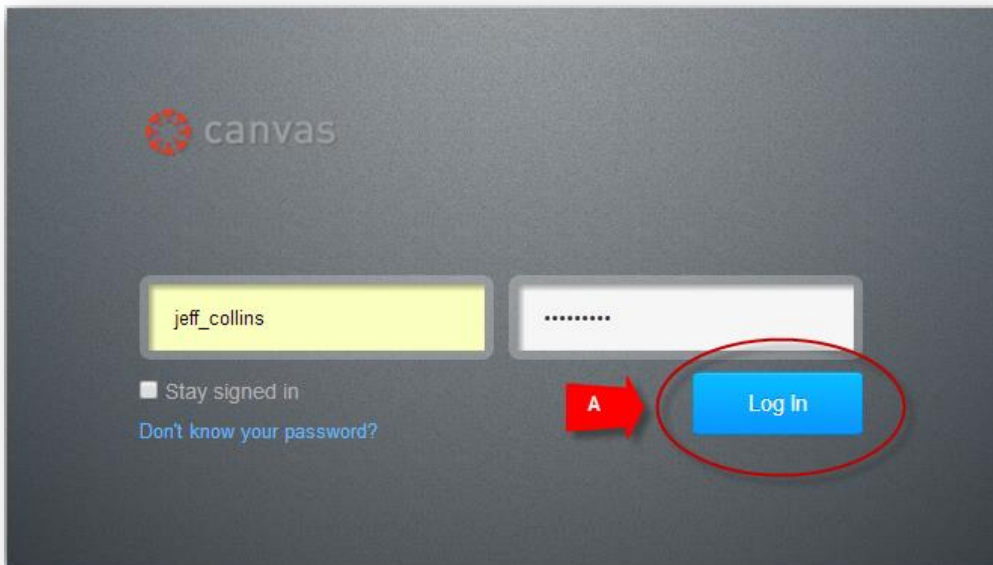
Getting Started: How to pair your Canvas LMS with SimNet

(2/27/2018)

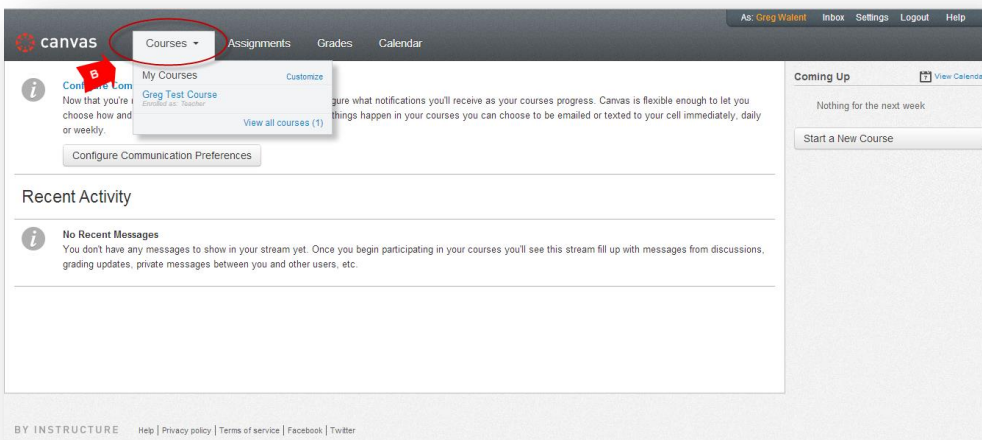
This guide will assist you with pairing your Canvas learning management system with SimNet. By pairing your Canvas account and course with SimNet you will be able to establish a single sign-on experience for your student and utilize grade sync. In order to complete this process you will need:

- A Canvas username and password (instructor)
- A Canvas course (that you are enrolled in as an instructor)
- A SimNet account (if you already have one, if not you will create one)

1. To get started, enter your Canvas username and password. Click Login **(A)**.



2. Under Courses, locate and click on your course name **(B)**.



3. Click on **McGraw-Hill SIMnet** in the left navigation pane.

The screenshot shows the Canvas LMS interface for a course titled "Thuan SIMnetInst6 Demo". On the left, a dark navigation pane contains icons for Account, Dashboard, Courses, Calendar, and Inbox. Below these icons is a list of navigation items: Home, Announcements, McGraw-Hill SIMnet (highlighted with a red box), Assignments, Discussions, Grades, People, Pages, Files, Syllabus, Outcomes, Quizzes, Modules, Conferences, Collaborations, MHCampus, McGraw-Hill Connect, Tegrity Classes, and Settings. The main content area is titled "Recent Activity in Thuan SIMnetInst6 Demo" and contains a message: "No Recent Messages You don't have any messages to show in your stream yet. Once you begin participating in your courses you'll see this stream fill up with messages from discussions, grading updates, private messages between you and other users, etc." On the right, there is a "Course Status" section with buttons for "Unpublish" and "Published", and a "Coming Up" section with a "View Calendar" link.

4. Click the **Authorize** button.

The screenshot shows the Canvas LMS interface with the McGraw-Hill Campus authorization dialog box open. The dialog box has a dark header with the Canvas logo and "McGraw-Hill Campus" text. Below the header, it says "McGraw-Hill Campus is requesting access to your account." and "You are authorizing this app as Thuan SIMnetInst6. Your email address is thuan.simnetinst6@mailinator.com." At the bottom of the dialog box, there are two buttons: "Cancel" and "Authorize" (highlighted with a red box). The background of the interface is dimmed, showing the same navigation pane as in the previous screenshot.

5. Verify the SIMnet URL associated with your school. If the pre-populated URL is incorrect, please enter the correct one. Click **Next** to proceed.



What SIMnet URL would you like to pair with?


Enter your school's SIMnet account below.

https:// _____ .simnetonline.com

Don't know your SIMnet URL?

Click [here](#) to find your McGraw-Hill Education representative.

6. Sign IN with an existing SIMnet account or Create a new SIMnet account if you do not have one.




Do you have a SIMnet login?

Yes No

Sign In with your SIMnet credentials

Username:

Password:



Do you have a SIMnet login?

Yes No

Create new SIMnet account

First Name:

Last Name:

Email:

Username:

Password:

Confirm Password:

I have read and accept the [Terms of Service](#)

7. Pair with a new or existing SIMnet class and click **Next** to proceed.

The left screenshot shows the 'Pair your class with SIMnet' form. It features the SIMnet logo at the top and two radio buttons: 'A new SimNet class' (selected) and 'An existing SimNet class'. Below are input fields for 'Class Title', 'Section Title', 'Campus' (set to 'Default'), 'Default Module (optional)' (set to 'None'), and 'Copy From (optional)' (set to 'None'). 'Cancel' and 'Next' buttons are at the bottom.

The right screenshot shows the selection screen. It has the same logo and radio buttons, but 'An existing SimNet class' is selected. It includes a 'Filter by' dropdown (set to 'All Campuses') and 'Show' radio buttons ('My Classes' selected, 'All Classes' unselected). A table lists available classes:

Paired	Class	Section
	Thuan SIMnetbbinst1	

'Cancel' and 'Next' buttons are at the bottom.

8. You have completed the pairing process. Click **Continue to SIMnet**.

