



## Installation Instructions

**S-5!® Warning!** Please use these products responsibly! Has the installation of VersaBracket™ been properly spaced and configured and the proper screws selected for your specific roof application? If not, see our Calculator and Load Table at [www.S-5.com](http://www.S-5.com) or ask your distributor.

**Notice to S-5! users:** specific layout and assembly schematics for S-5! products are the responsibility of the user or project designer. Due to the many variables involved with specific panel products, climates, snow melt phenomena and job particulars, **the manufacturer cannot and does not express any opinions as to the suitability of any S-5! assembly for any specific application and assumes no liability with respect thereto.** S-5! clamps are tested for ultimate holding strength on various seam types and materials. This information is available from the S-5! website: [www.S-5.com](http://www.S-5.com). This document is an installation guide only and the photographs and drawings herein are for the purpose of illustrating installation tools and techniques, not system designs.

## Tools Needed

- Electric Screwgun
- Rag

VersaBracket should be placed in the flat of the panel, between the ribs, and must be mounted directly over and into the supporting structure of the roof, i.e. wood decking, wood or steel purlins or trusses, NEVER into the metal roofing material alone.

To ensure brackets are installed in a straight line, install a single VersaBracket on each end of the roof at a measured, consistent distance from the bottom edge of the roof. Use a string line between the two brackets. Mount the remaining VersaBracket along the string line, directly into the supporting structure of the roof.

## To install VersaBracket:

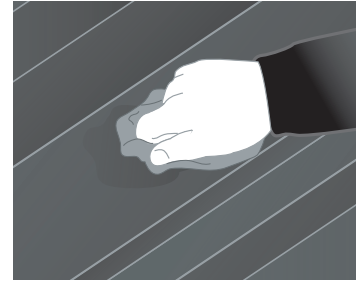
- 1) Determine the location of the supporting structure of the roof. When possible, secure the VersaBracket using all hole locations; when not possible, always use the two up-slope hole locations.
- 2) The only surface preparation necessary is to simply wipe away excess oil and debris.
- 3) Peel the release paper from the base, align and apply to roof surface.
- 4) Secure the VersaBracket directly into the supporting structure of the roof by drilling screws into the pre-punched holes directly into the supporting structure of the roof (3 holes are provided for convenience and versatility). Consult the S-5! Load Table for more information.

Copyright 2010, Metal Roof Innovations, Ltd.

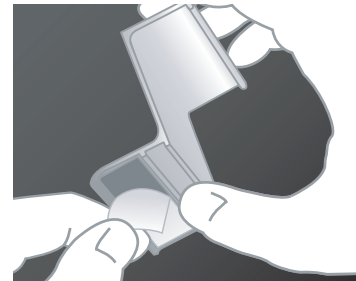
S-5! products are patent protected. S-5! aggressively protects its patents, trademarks and copyrights.

Attach almost anything to exposed-fastened roof systems,  
with no messy sealants and no chance for leaks!

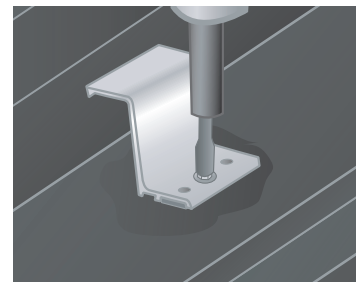
1



2



3



# S-5!<sup>®</sup>

The Right Way!

## Installation Instructions

**S-5!<sup>®</sup> Warning!** Please use these products responsibly! Has the installation of CorruBracket™ been properly spaced and configured and the proper screws selected for your specific roof application? If not, see our Calculator and Load Table at [www.S-5.com](http://www.S-5.com) or ask your distributor.

**Notice to S-5! users:** specific layout and assembly schematics for S-5! products are the responsibility of the user or project designer. Due to the many variables involved with specific panel products, climates, snow melt phenomena and job particulars, **the manufacturer cannot and does not express any opinions as to the suitability of any S-5! assembly for any specific application and assumes no liability with respect thereto.** S-5! clamps are tested for ultimate holding strength on various seam types and materials. This information is available from the S-5! website: [www.S-5.com](http://www.S-5.com). This document is an installation guide only and the photographs and drawings herein are for the purpose of illustrating installation tools and techniques, not system designs.

## Tools Needed

- Electric Screwgun
- Rag

CorruBracket must be mounted directly over and into the supporting structure of the roof, i.e. wood decking, wood or steel purlins or trusses, NEVER into the metal roofing material alone.

To ensure brackets are installed in a straight line, install a single CorruBracket on each end of the roof at a measured, consistent distance from the bottom edge of the roof. Use a string line between the two brackets. Mount the remaining CorruBracket along the string line, directly into the supporting structure of the roof.

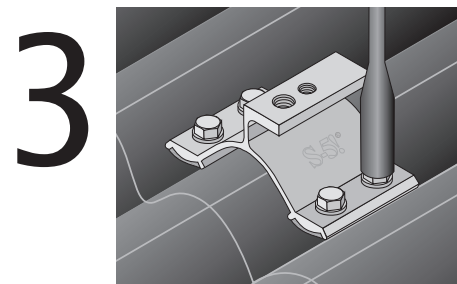
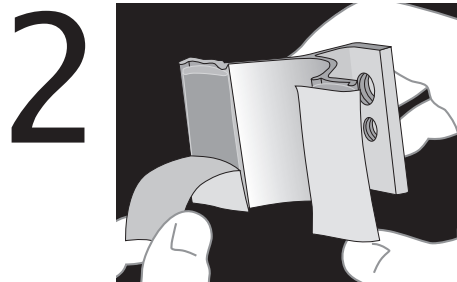
## To install CorruBracket:

- 1) Determine the location of the supporting structure of the roof. When possible, secure the CorruBracket using all hole locations; when not possible, always use the two up-slope hole locations.
- 2) The only surface preparation necessary is to simply wipe away excess oil and debris.
- 3) Peel the release paper from both bases, align and apply to the clean area.
- 4) Secure the CorruBracket directly into the supporting structure of the roof by drilling appropriate screws into the pre-punched holes and into the supporting structure.

Copyright 2010, Metal Roof Innovations, Ltd.

S-5! products are patent protected. S-5! aggressively protects its patents, trademarks and copyrights.

Attach almost anything to corrugated metal roofing, with no messy sealants and no chance for leaks!



CorruBracket™ Install