

Introduction

Stand-offs are used whenever flashed installations or increased airflow is desired. Our seamless hardware-based aluminum stand-offs allow precise placement of flashing over a secured base. IronRidge offers two styles of stand-offs: L-foot attachment stand-offs and Tilt Leg attachment stand-offs. Please note Tilt Leg attachment stand-offs are currently for 1-10 degree tilt only. Both styles are covered in the instructions below.

Stand-off, L-Foot Attachment

1. Component List

| Parts Required | Qty | Part Number |
|--|-----|-------------|
| Base Plate, 4" | 1 | 51-6000-501 |
| 5/16" EPDM Backed Washer | 1 | 25-3102-006 |
| 5/16"-18 x 3/4" Hex Head Thread Forming Bolt | 1 | 23-31HH-TR1 |
| 1/4"-20 x 1" Flat Head Thread Forming Bolt | 2 | 23-25FH-TR1 |
| Extrusion, Stand-off post (3", 4", 6" or 7" length) | 1 | 51-60X0-500 |
| L-foot (not included) | 1 | 51-6000-015 |

2. Assembly

1. Begin by creating threads in stand-off post. Select a Phillips tip for the screw gun that fits the 1/4" - 20 x 1" Flat Head Thread Forming Bolt snugly.
2. Clamp standoff post securely in a vise.
3. Align screw straight with the hole and drive the screw $\frac{3}{4}$ of the way in. Note: often a drop of oil will assist in the threading process.
4. Repeat for all holes required.
5. Remove the screws and install the base plate, reinserting and tightening the screws to 74 inch-lbs.
6. Place the 5/16" EPDM backed washer rubber side down on the top of the stand-off post, aligning the hole in the washer with the hole in the top of the stand-off post.
7. Position your L-foot on top of the washer, aligning the L-foot obround with the hole in the top of the stand-off and washer as shown in Figure 1.
8. Insert a 5/16" -18 x3/4" Hex Head Thread Forming Bolt into the obround in the base of the L-foot, and thread into the top of the stand-off post. Make sure that the EPDM washer stays properly seated on the stand-off to ensure a good seal as you torque the bolt. Tighten to 139 in-lbs.

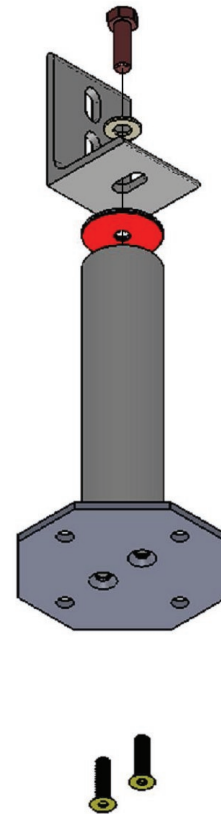


Fig. 1

Stand-off, Tilt Leg Attachment

1. Component List

| Parts Required | Qty | Part Number |
|--|-----|-------------|
| Base Plate, 4" | 1 | 51-6000-501 |
| Washer, Flat 1/4" SS | 2 | 25-2502-000 |
| 1/4" -20 x 1" Flat Head Thread Forming Bolt | 2 | 23-25FH-TR1 |
| 1/4" -20 x 1" Hex Head Thread Forming Bolt | 2 | 23-25HH-TR1 |
| Extrusion, Stand-off post (3", 4", 6" or 7" length) | 1 | 51-60X0-500 |
| Tilt Leg U-foot Bracket (not included) | 1 | 51-7100-001 |

Note: Stand-off, Tilt Leg Attachment is designed for 1-10 degree tilt only.

2. Assembly

1. Begin by creating threads in stand-off post. Select a Phillips tip for the screw gun that fits the 1/4" - 20 x 1" Flat Head Thread Forming Bolt snugly.
2. Clamp standoff post securely in a vise.
3. Align screw straight with the hole and drive the screw $\frac{3}{4}$ of the way in. Note: often a drop of oil will assist in the threading process.
4. Repeat for all holes required.
5. Remove the screws and install the base plate, reinserting and tightening the screws to 74 inch-lbs.
6. Position your Tilt Leg U-foot Bracket on top of the stand-off as shown in Figure 2.
7. Insert two 1/4" -20 x 1" Hex Head Thread Forming Bolts through the two flat washers and into the obrounds in the base of the Tilt Leg U-foot Bracket and thread into pair of outer holes on the top of the stand-off post as shown in Figure 2. Tighten to 139 in-lbs.

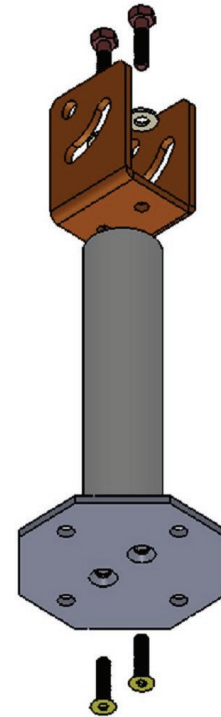


Fig. 2

For product and purchasing inquiries contact:

ecodirect

CLEAN ENERGY SOLUTIONS

www.ecodirect.com