

Multi-Pole Mount (MPM-G2) Pricing and Selection Guide



<p>Rail Set Selection Guide Instructions:</p> <ol style="list-style-type: none"> Determine Module Series by matching dimensions to size range (left column, below) Select size of Horizontal Tube (4" x 4" square or 5" x 4" rectangular) If horizontal tube size is unknown, submit a MPM Request for Quote Form found on www.DPWSolar.com. Select number of modules to mount (move across chart) Note - MPM Configuration block (to the right) includes the layout and price. Determine Multi-Pole Mount part number to order using Ordering Guidelines Block (to the right). Refer to Options block (below) for more details. <p>Prices subject to change without notice.</p>	<p>Ordering Guideline MPM4-D-4x4-AA</p>	<p>MPM-G2 Configuration Key</p> <p>4h x 1w-L ← Array Layout and Module Orientation (P=Portrait, L=Landscape)</p> <p>\$580 ← MPM Mounting Hardware List Price</p>
---	---	---

RAIL SETS (Includes Module Rails, Tilt Brackets, and Associated SS HW)	DPW MODULE Type	For 4" x 4" Square Steel Horizontal Tube Number of Modules			For 5" x 4" Rectangular Steel Horizontal Tube Number of Modules		
		2	3	4	2	3	4
MODULE SIZE RANGE (W x L)							
31-33" x 60-67"	D	2h x 1w-L \$385	3h x 1w-L \$490	4h x 1w-L \$580	2h x 1w-L \$395	3h x 1w-L \$500	4h x 1w-L \$590
38-40" x 51-56"	E	2h x 1w-L \$400	3h x 1w-L \$525	4h x 1w-L \$640	2h x 1w-L \$410	3h x 1w-L \$535	4h x 1w-L \$650
38-40" x 58-61"	F	2h x 1w-L \$400	3h x 1w-L \$525	4h x 1w-L \$640	2h x 1w-L \$410	3h x 1w-L \$535	4h x 1w-L \$650
37-42" x 61-67"	G or GL*	2h x 1w-L \$400	3h x 1w-L \$525	4h x 1w-L \$640	2h x 1w-L \$410	3h x 1w-L \$535	4h x 1w-L \$650
38-42" x 77-82"	H or HL*	2h x 1w-L \$400	3h x 1w-L \$525	N/A	2h x 1w-L \$410	3h x 1w-L \$535	N/A
50-52" x 65-79"	I	2h x 1w-L \$520	3h x 1w-L \$635	N/A	2h x 1w-L \$530	3h x 1w-L \$645	N/A

*GL or HL - Includes longer module rails for module widths greater than 39.45" (i.e. Sunpower 305, Sunpower 400)

Finish Upgrade		Price Adder
PCA	Powder Coated Aluminum Components	25%
AA	Anodized Aluminum Components	35%
HGS	Hot-dip Galvanized Steel Components	60% for Pipe Caps and 30% for Rail Sets

Multi-Pole Mount (MPM-G2) Finish Upgrades

Instructions: Add O (Option) to the end of MPM part number in the order listed below. Add Option pricing to base MPM list price

Part Suffix	Description
PCA	Powder Coated Aluminum Components (Available for Rail Sets Only)
AA	Anodized Aluminum Components (Available for Rail Sets Only)
HGS	Hot-Dip Galvanized Steel Components

Telephone: (505) 889-3585
Fax: (505) 889-3548

Toll Free: (800) 260-3792
Web Site: www.dpwsolar.com

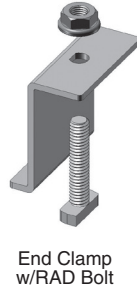
Email: info@dpwsolar.com

Multi-Pole Mount (MPM-G2) Pricing and Selection Guide

Module Clamps are Type 304 stainless steel for higher yield strength and durability. The low profile design and slim 3/8" gap between modules provide a professional appearance and higher module density.

RAD™ End Clamp with Hardware

Part #	Description	Quantity	Weight Per Unit (lbs.)	Price
EC- <input type="text"/> -RAD	Module End Clamp w/RAD Hardware	1-19	0.15	5.25
		20-39		5.05
		40-59		4.85
		60-79		4.65
		80-99		4.45
		100+		4.25



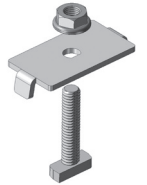
End Clamp w/RAD Bolt

Note: Replace with module depth from the Solar Module Specification Sheet.
Example: EC-46-RAD end clamp for Sharp NU-U240F1 modules

Add "B" suffix to part number for black powder coat.
Example: EC-46-RAD-B. (Add 25% to price)

RAD Mid Clamp with Hardware

Part #	Description	Quantity	Weight Per Unit (lbs.)	Price
MC-28-33-RAD	Module Mid Clamp for 28-33 mm Thick Frame	1-49	0.08	4.50
		50-99		3.75
		100+		3.25
MC-34-39-RAD	Module Mid Clamp for 34-39 mm Thick Frame	1-49	0.08	4.50
		50-99		3.75
		100+		3.25
MC-40-46-RAD	Module Mid Clamp for 40-46 mm Thick Frame	1-49	0.08	4.50
		50-99		3.75
		100+		3.25
MC-47-52-RAD	Module Mid Clamp for 47-52 mm Thick Frame	1-49	0.08	4.50
		50-99		3.75
		100+		3.25
MC-53-59-RAD	Module Mid Clamp for 53-59 mm Thick Frame	1-49	0.08	4.50
		50-99		3.75
		100+		3.25



Mid Clamp w/RAD Bolt

MULTI-POLE MOUNT PIPE CAPS (INCLUDES PIPE CAP, TOP PLATE & ASSOCIATED SS HW):

DESCRIPTION	PART #	PRICE
For connecting 3" SCH40/80 vertical steel pipe to 4" x 4" horizontal steel tube	PC-3V4x4H	\$210
For connecting 4" SCH40/80 vertical steel pipe to 4" x 4" horizontal steel tube	PC-4V4x4H	\$230
For connecting 4" SCH40/80 vertical steel pipe to 5" x 4" horizontal steel tube	PC-4V5x4H	\$240
For connecting 6" SCH40/80 vertical steel pipe to 4" x 4" horizontal steel tube	PC-6V4x4H	\$275
For connecting 6" SCH40/80 vertical steel pipe to 5" x 4" horizontal steel tube	PC-6V5x4H	\$285

Quantity and size of pipe caps are dependent on site-specific conditions and array characteristics. Please contact manufacturer for pipe sizing and pipe cap recommendations.



2716 Vassar Place NE
Albuquerque, NM 87107 USA

Telephone: 800.260.3792
Fax: 505.889.3548
Web Site: www.DPWSolar.com
E-mail: info@dpwsolar.com

© 2016 Preformed Line Products
SL-PL-1007-3
06.16.00