

ArchWell
HEALTH

APPROVED

In accordance with the terms and provisions of the Philadelphia Code,
this application satisfies the requirements of the:

PHILADELPHIA ART COMMISSION

Applied Electronically By: **KACIE LISS**

July 9, 2025

6201 Germantown Ave.
Philadelphia, PA

Exterior Permit Sign Package: 03/27/25

Scale: 1" = 20'-0"

APPROVED

In accordance with the terms and provisions of the Philadelphia Code,
this application satisfies the requirements of the:

PHILADELPHIA ART COMMISSION

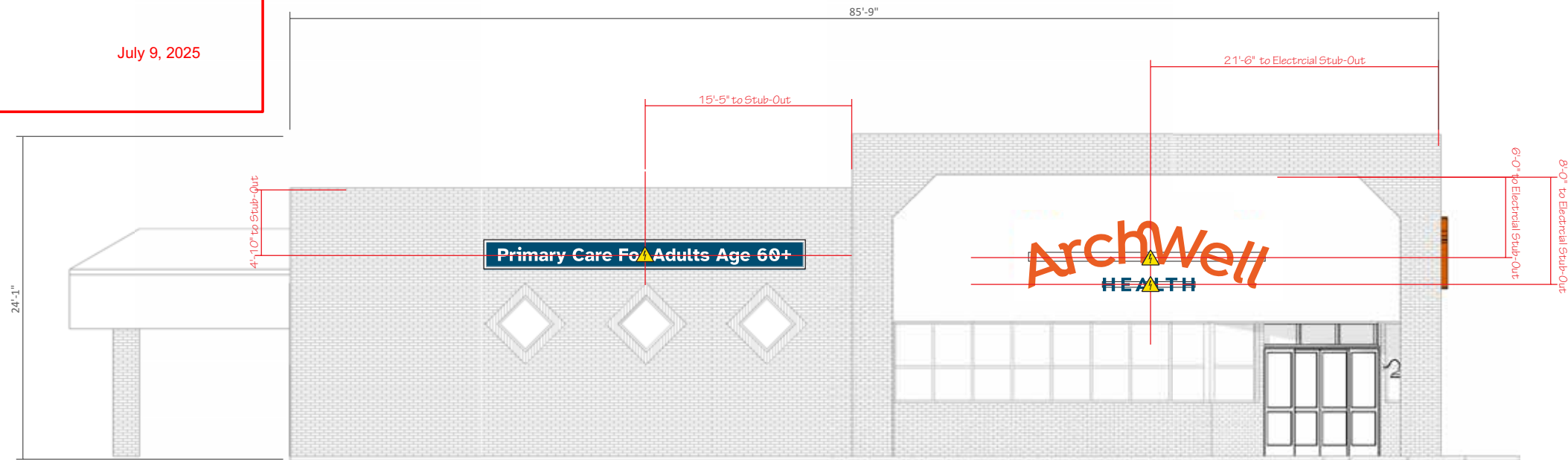
Applied Electronically By: KACIE LISS

July 9, 2025

DEPARTMENT OF
LICENSES & INSPECTIONS
APPROVED
FOR ZONING ONLY
07/12/25

WHEN YOUR PLANS CONTAIN ANY OMISSION, ERROR OR
DEVIATION FROM THESE APPROVED PLANS IT WILL
REQUIRE THE APPROVAL OF THE DEPARTMENT OF
LICENSES & INSPECTIONS.

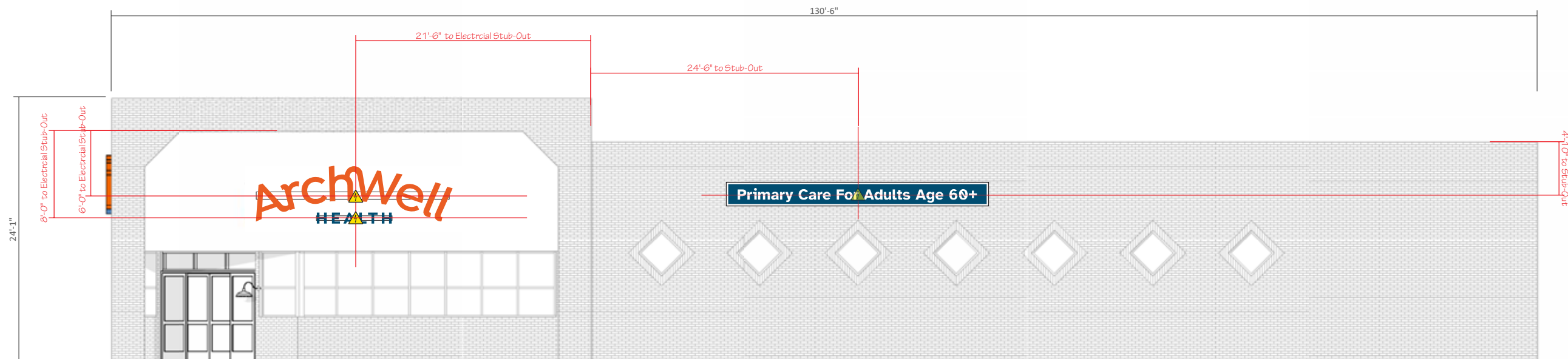
Applied by L&I: Andrew DiDonato



East Elevation

Scale: 3/32" = 1'-0"

Max Sq Ft Allowed East Elevation: 3 Sq Ft Per Linear Ft
Germantown Ave. - Facing Street - Total Linear Ft: 85'-9"
Max Sq Ft Signage Allowed: 257.25
Proposed Signage Total Sq ft: 148.09



North Elevation

Scale: 3/32" = 1'-0"

Max Sq Ft Allowed North Elevation: 2 Sq Ft Per Linear Ft
E. Tulpehocken St. - Facing Street - Elevation Total Linear Ft: 130'-6"
Max Sq Ft Signage Allowed: 261
Proposed Signage Total Sq ft: 148.09



APPROVED

In accordance with the terms and provisions of the Philadelphia Code,
this application satisfies the requirements of the:

PHILADELPHIA ART COMMISSION

Applied Electronically By: KACIE LISS July 9, 2025





Sign Type: ICL - Internally Illuminated Channel Letters

Construction Details:

- ① 5" deep Individual Aluminum Channel Letters Painted to match PMS 166c, inside of letters painted High Gloss White, 1" trimcap painted to match PMS 166c. Standard white LED internal illumination. 3/16" thick translucent White Acrylic faces with first surface applied perforated vinyl to match PMS 166c. Mounted on 8" Narrow raceway painted SW 7647 Crushed Ice to match building facade. Thru bolts to span raceway every 3 to 4' at top and bottom
- ② 5" deep Individual Aluminum Channel Letters Painted to match PMS 3025c, inside of letters painted High Gloss White, 1" trimcap painted to match PMS 3025c. Standard white LED internal illumination. 3/16" thick translucent White Acrylic faces with first surface applied perforated vinyl to match PMS 3025c. Mounted on 8" Narrow raceway painted SW 7647 Crushed Ice to match building facade. Thru bolts to span raceway every 3 to 4' at top and bottom

Caulk and seal all penetrations through building exterior with GE 50 year/100% Siliconized sealant or approved equivalent to prevent water intrusion.

Notes:

GC to provide timer if required. No photo cells. GC to provide two 20amp/120V or 277V Electrical Circuit with junction box in wall behind sign.
*ACCESS TO JUNCTION BOX IS NECESSARY FOR FINAL CONNECTIONS.

APPROVED

In accordance with the terms and provisions of the Philadelphia Code, this application satisfies the requirements of the:

PHILADELPHIA ART COMMISSION

Applied Electronically By: KACIE LISS July 9, 2025

ArchWell
HEALTH

Germantown
6201 Germantown Ave.
Philadelphia, PA

Date: 11/15/24

Revised:

Designer: RPB

Loc 01_ICL Logo_
File Name: East Elevation.ai

File Folder: A\Archwell Health\2025
Locations\Germantown - 6201
Germantown Ave - Philadelphia\Shop
Drawings

Project Manager: CR

Location 01

Internally Illuminated
Channel Letters



1301 Antioch Pike, Nashville, TN 37211
p. 615-885-2900 | f. 615-885-2989

This design is being submitted for use as a product being manufactured for you by Signcraft, Inc. It is not to be reproduced, copied or manufactured by you or given to any other manufacturer without written permission from Signcraft, Inc. Unauthorized use is subject to design charge and will include any collection fees.

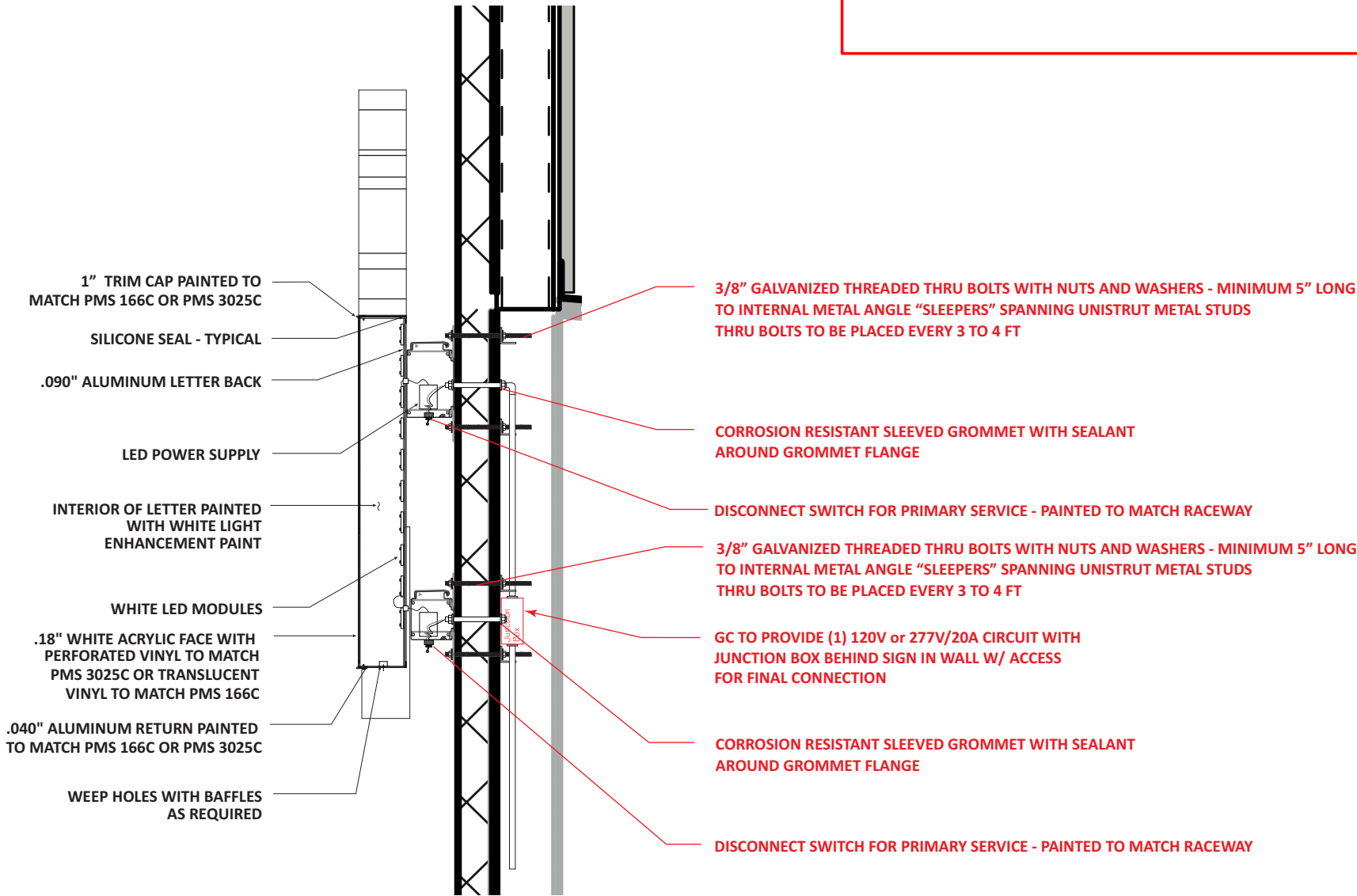
APPROVED

In accordance with the terms and provisions of the Philadelphia Code,
this application satisfies the requirements of the:

PHILADELPHIA ART COMMISSION

Applied Electronically By: KACIE LISS

July 9, 2025



Typical EIFS Section View with behind Wall Access

Scale: 3/4" = 1'-0"

ArchWell
HEALTH

Germantown

6201 Germantown Ave.
Philadelphia, PA

Date: 11/15/24

Revised:

Designer: RPB

Loc 01_ICL Logo_
File Name: East Elevation.ai

File Folder: A\Archwell Health\2025
Locations\Germantown - 6201
Germantown Ave - Philadelphia\Shop
Drawings

Project Manager: CR

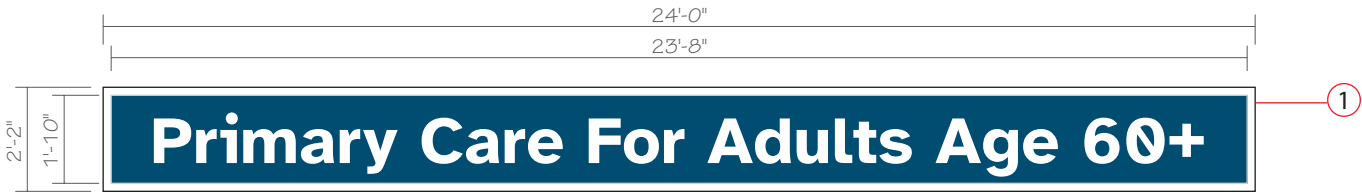
Location 01

Internally Illuminated
Channel Letters

signcraft
USA
identifying your way

1301 Antioch Pike, Nashville, TN 37211
p. 615-885-2900 | f. 615-885-2989

This design is being submitted for use as a product being manufactured for you by Signcraft, Inc. It is not to be reproduced, copied or manufactured by you or given to any other manufacturer without written permission from Signcraft, Inc. Unauthorized use is subject to design charge and will include any collection fees.



Proposed Signage

Scale: 1/4" = 1'-0"

Proposed Sq Ft 52

Approx Signage Weight: 425lb

APPROVED

In accordance with the terms and provisions of the Philadelphia Code,
this application satisfies the requirements of the:

PHILADELPHIA ART COMMISSION

Applied Electronically By: KACIE LISS

July 9, 2025

Sign Type: ICL - Internally Illuminated Wall Cabinet Sign

Construction Details:

- 1 6" Deep fabricated aluminum cabinet painted white with 2" Retainers painted white. Inside of cabinet painted white. 3/16" thick translucent polycarbonate face with applied first surface opaque vinyl to match PMS 3025c with reverse weed graphics. Standard white LED illumination.

Caulk and seal all penetrations through building exterior with GE 50 year/100% Siliconized sealant or approved equivalent to prevent water intrusion.

Notes:

GC to provide timer if required. No photo cells. GC to provide two 20amp/120V or 277V Electrical Circuit with junction box in wall behind sign.

*ACCESS TO JUNCTION BOX IS NECESSARY FOR FINAL CONNECTIONS.



Germantown

6201 Germantown Ave.
Philadelphia, PA

Date: 11/15/24

Revised:

Designer: RPB

Loc 02_PCFAA60_
File Name: North Elevation.ai

File Folder: A\Archwell Health\2025
Locations\Germantown - 6201
Germantown Ave - Philadelphia\Shop
Drawings

Project Manager: CR

Location 02

Internally Illuminated
Channel Letters



1301 Antioch Pike, Nashville, TN 37211
p. 615-885-2900 | f. 615-885-2989

This design is being submitted for use as a product being manufactured for you by Signcraft, Inc. It is not to be reproduced, copied or manufactured by you or given to any other manufacturer without written permission from Signcraft, Inc. Unauthorized use is subject to design charge and will include any collection fees.

APPROVED

In accordance with the terms and provisions of the Philadelphia Code, this application satisfies the requirements of the:

PHILADELPHIA ART COMMISSION

Applied Electronically By: KACIE LISS July 9, 2025

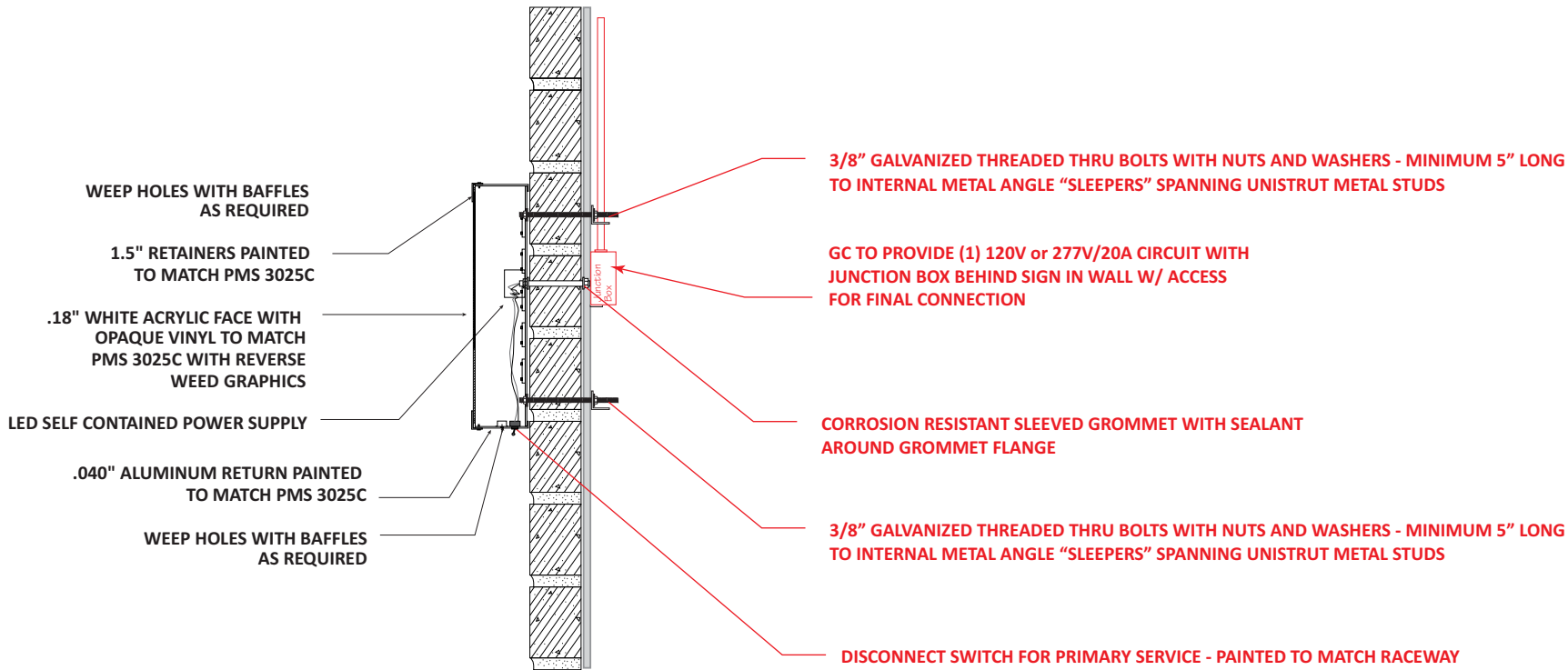
DEPARTMENT OF
LICENSES & INSPECTIONS

APPROVED
FOR ZONING ONLY

07/12/25

WHEN YOUR PLANS CONTAIN ANY OMISSION, ERROR OR
DEVIATION FROM THESE APPROVED PLANS IT WILL
REQUIRE THE APPROVAL OF THE DEPARTMENT OF
LICENSES & INSPECTIONS.

Applied by L&I: Andrew DiDonato



Typical Brick Section View with Behind Wall Access

Scale: 3/4" = 1'-0"



Germantown

6201 Germantown Ave.
Philadelphia, PA

Date: 11/15/24

Revised:

Designer: RPB

Loc 02_PCFAA60_
File Name: North Elevation.ai

File Folder: A\Archwell Health\2025
Locations\Germantown - 6201
Germantown Ave - Philadelphia\Shop
Drawings

Project Manager: CR

Location 02

Internally Illuminated
Channel Letters



1301 Antioch Pike, Nashville, TN 37211
p. 615-885-2900 | f. 615-885-2989

This design is being submitted for use as a product being manufactured for you by Signcraft, Inc. It is not to be reproduced, copied or manufactured by you or given to any other manufacturer without written permission from Signcraft, Inc. Unauthorized use is subject to design charge and will include any collection fees.



APPROVED

In accordance with the terms and provisions of the Philadelphia Code,
this application satisfies the requirements of the:

PHILADELPHIA ART COMMISSION

Applied Electronically By: KACIE LISS July 9, 2025

Sign Type: ICL - Internally Illuminated Channel Letters

- Construction Details:**
- 1 5" deep Individual Aluminum Channel Letters Painted to match PMS 166c, inside of letters painted High Gloss White, 1" trimcap painted to match PMS 166c. Standard white LED internal illumination. 3/16" thick translucent White Acrylic faces with first surface applied perforated vinyl to match PMS 166c. Mounted on 8" Narrow raceway painted SW 7647 Crushed Ice to match building facade. Thru bolts to span raceway every 3 to 4' at top and bottom
 - 2 5" deep Individual Aluminum Channel Letters Painted to match PMS 3025c, inside of letters painted High Gloss White, 1" trimcap painted to match PMS 3025c. Standard white LED internal illumination. 3/16" thick translucent White Acrylic faces with first surface applied perforated vinyl to match PMS 3025c. Mounted on 8" Narrow raceway painted SW 7647 Crushed Ice to match building facade. Thru bolts to span raceway every 3 to 4' at top and bottom

Caulk and seal all penetrations through building exterior with GE 50 year/100% Siliconized sealant or approved equivalent to prevent water intrusion.

Notes:
GC to provide timer if required. No photo cells. GC to provide two 20amp/120V or 277V Electrical Circuit with junction box in wall behind sign.
*ACCESS TO JUNCTION BOX IS NECESSARY FOR FINAL CONNECTIONS.



Germantown
6201 Germantown Ave.
Philadelphia, PA

Date: 11/15/24

Revised:

Designer: RPB

Loc 03_ICL Logo_
File Name: East Elevation.ai

File Folder: A\Archwell Health\2025
Locations\Germantown - 6201
Germantown Ave - Philadelphia\Shop
Drawings

Project Manager: CR

Location 03

Internally Illuminated
Channel Letters



1301 Antioch Pike, Nashville, TN 37211
p. 615-885-2900 | f. 615-885-2989

This design is being submitted for use as a product being manufactured for you by Signcraft, Inc. It is not to be reproduced, copied or manufactured by you or given to any other manufacturer without written permission from Signcraft, Inc. Unauthorized use is subject to design charge and will include any collection fees.

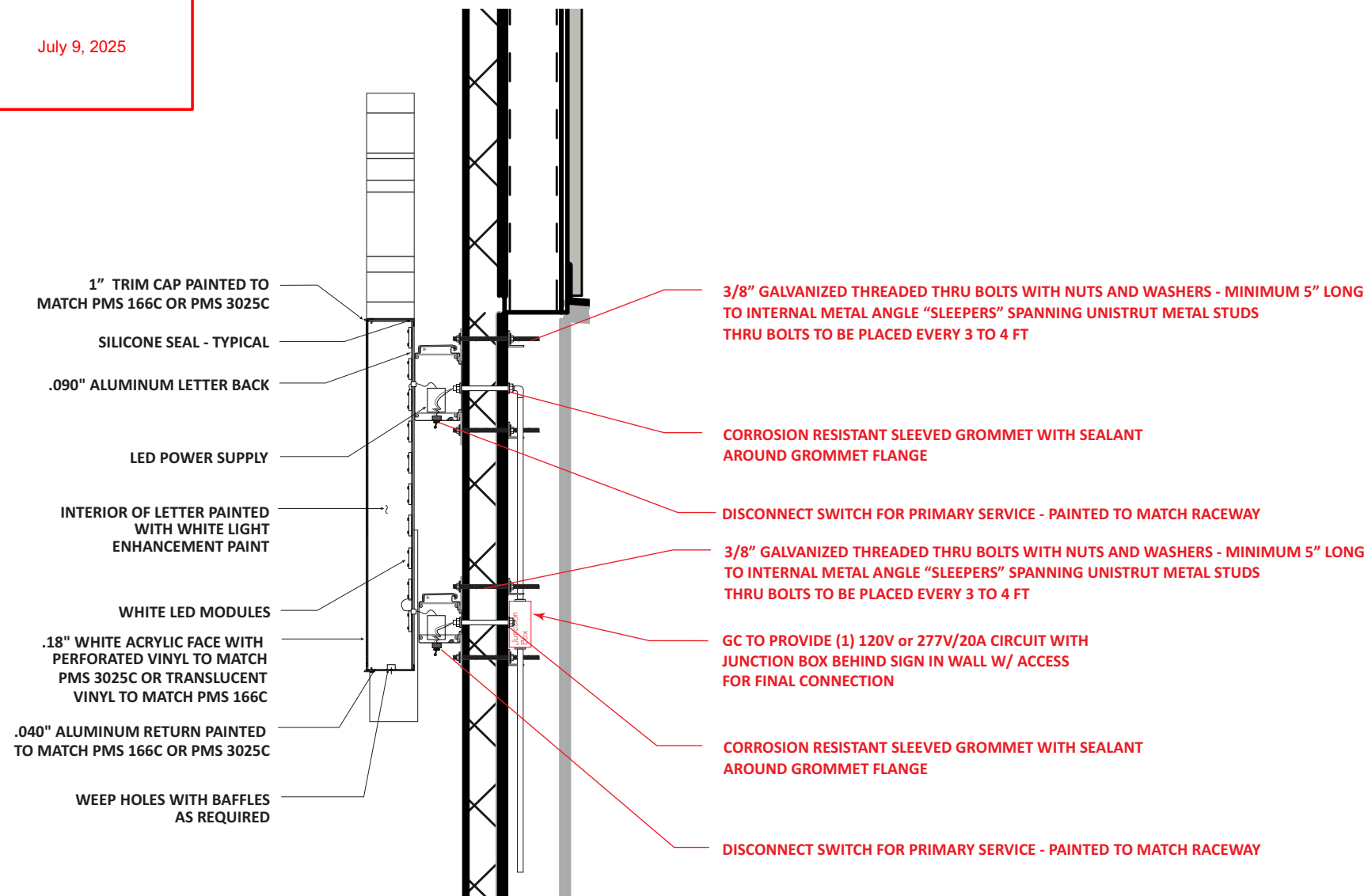
APPROVED

In accordance with the terms and provisions of the Philadelphia Code,
this application satisfies the requirements of the:

PHILADELPHIA ART COMMISSION

Applied Electronically By: **KACIE LISS**

July 9, 2025



Typical EIFS Section View with behind Wall Access

Scale: $\frac{3}{4}'' = 1'-0''$

07/12/25

WHEN YOUR PLANS CONTAIN ANY OMISSION, ERROR OR DEVIATION FROM THESE APPROVED PLANS IT WILL REQUIRE THE APPROVAL OF THE DEPARTMENT OF LICENSES & INSPECTIONS.

Applied by L&I: Andrew DiDonato



Germantown

6201 Germantown Ave.
Philadelphia, PA

Date: 11/15/24

Revised:

Designer: RPB

Loc 03_ICL Logo_
File Name: East Elevation.ai

File Folder: A\Archwell Health\2025
Locations\Germantown - 6201
Germantown Ave - Philadelphia\Shop
Drawings

Project Manager: CR

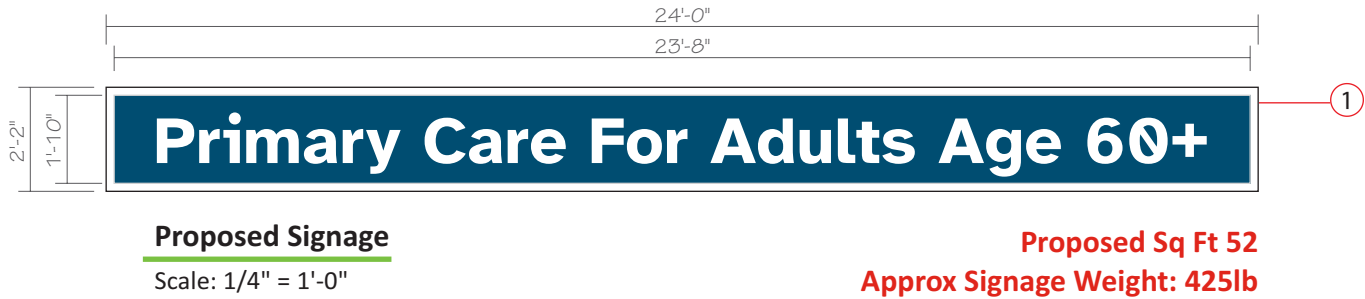
Location 03

Internally Illuminated Channel Letters



1301 Antioch Pike, Nashville, TN 37211
p. 615-885-2900 | f. 615-885-2989

This design is being submitted for use as a product being manufactured for you by Signcraft, Inc. It is not to be reproduced, copied or manufactured by you or given to any other manufacturer without written permission from Signcraft, Inc. Unauthorized use is subject to design charge and will include any collection fees.



APPROVED

In accordance with the terms and provisions of the Philadelphia Code,
this application satisfies the requirements of the:

PHILADELPHIA ART COMMISSION

Applied Electronically By: KACIE LISS
July 9, 2025

Sign Type: ICL - Internally Illuminated Wall Cabinet Sign

- 1

Construction Details:
6” Deep fabricated aluminum cabinet painted white with 2” Retainers painted white. Inside of cabinet painted white. 3/16” thick translucent polycarbonate face with applied first surface opaque vinyl to match PMS 3025c with reverse weed graphics. Standard white LED illumination.
- Caulk and seal all penetrations through building exterior with GE 50 year/100% Siliconized sealant or approved equivalent to prevent water intrusion.
- Notes:

GC to provide timer if required. No photo cells. GC to provide two 20amp/120V or 277V Electrical Circuit with junction box in wall behind sign.

*ACCESS TO JUNCTION BOX IS NECESSARY FOR FINAL CONNECTIONS.



Germantown
6201 Germantown Ave.
Philadelphia, PA

Date: 11/15/24

Revised:

Designer: RPB

Loc 04_PCFAA60_
File Name: North Elevation.ai

File Folder: A\Archwell Health\2025
Locations\Germantown - 6201
Germantown Ave - Philadelphia\Shop
Drawings

Project Manager: CR

Location 04
Internally Illuminated
Channel Letters



1301 Antioch Pike, Nashville, TN 37211
p. 615-885-2900 | f. 615-885-2989

This design is being submitted for use as a product being manufactured for you by Signcraft, Inc. It is not to be reproduced, copied or manufactured by you or given to any other manufacturer without written permission from Signcraft, Inc. Unauthorized use is subject to design charge and will include any collection fees.

APPROVED

In accordance with the terms and provisions of the Philadelphia Code, this application satisfies the requirements of the:

PHILADELPHIA ART COMMISSION

Applied Electronically By: KACIE LISS July 9, 2025

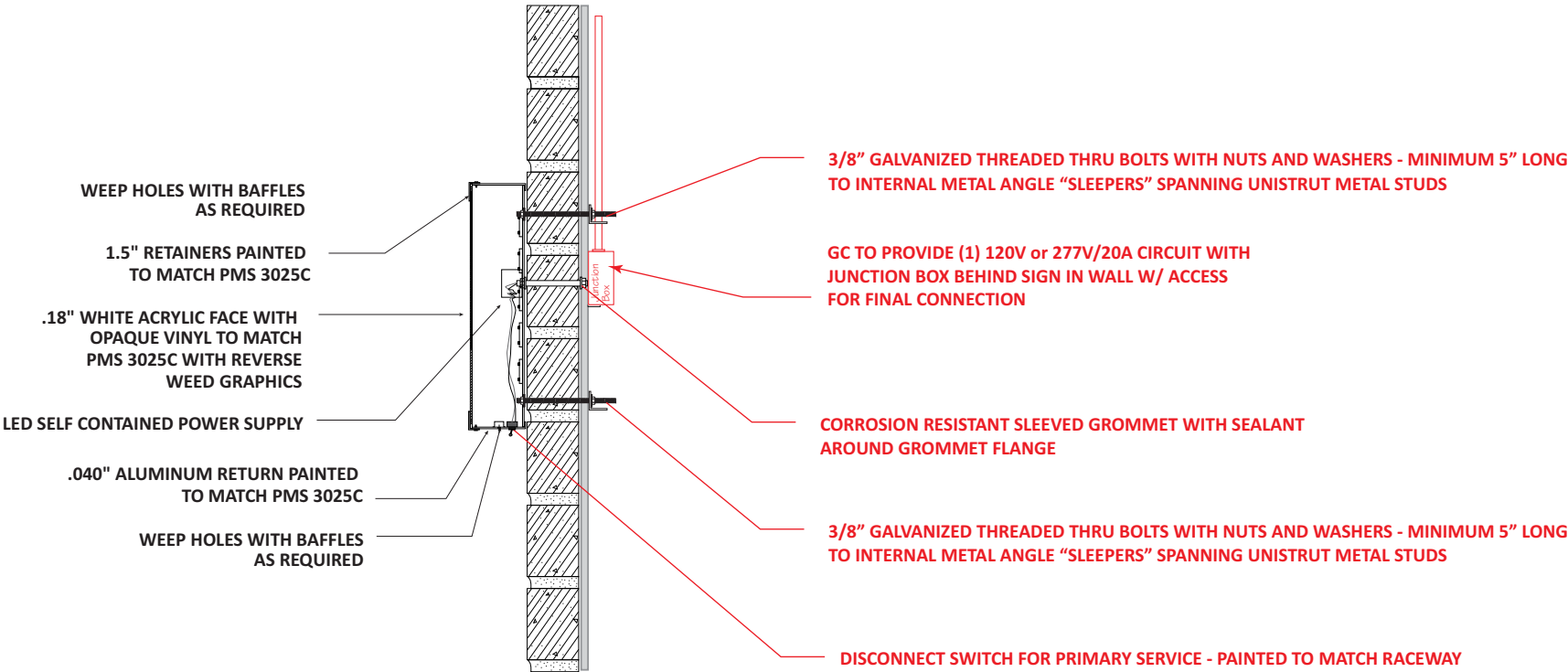
DEPARTMENT OF
LICENSES & INSPECTIONS

APPROVED
FOR ZONING ONLY

07/12/25

WHEN YOUR PLANS CONTAIN ANY OMISSION, ERROR OR
DEVIATION FROM THESE APPROVED PLANS IT WILL
REQUIRE THE APPROVAL OF THE DEPARTMENT OF
LICENSES & INSPECTIONS.

Applied by L&I: Andrew DiDonato



Typical Brick Section View with Behind Wall Access

Scale: 3/4" = 1'-0"

ArchWell
HEALTH

Germantown

6201 Germantown Ave.
Philadelphia, PA

Date: 11/15/24

Revised:

Designer: RPB

Loc 04_PCFAA60_
File Name: North Elevation.ai

File Folder: A\Archwell Health\2025
Locations\Germantown - 6201
Germantown Ave - Philadelphia\Shop
Drawings

Project Manager: CR

Location 04

Internally Illuminated
Channel Letters



identifying your way

1301 Antioch Pike, Nashville, TN 37211
p. 615-885-2900 | f. 615-885-2989

This design is being submitted for use as a product being manufactured for you by Signcraft, Inc. It is not to be reproduced, copied or manufactured by you or given to any other manufacturer without written permission from Signcraft, Inc. Unauthorized use is subject to design charge and will include any collection fees.



Proposed Signage

Scale: 1/2" = 1'-0"

Qty: 2

Change face in existing sign only.

Remove changeable copy cabinet and dispose. Repaint Posts and Cabinet to match SW 6503 Bosphorus.



Existing Signage

Scale: Not to Scale



Proposed Signage

Scale: Not to Scale



Corners to be cut to shape
at time of installation



Applied by L&I: Andrew DiDonato



Germantown

6201 Germantown Ave.
Philadelphia, PA

Date: 11/15/24

Revised: _____

Designer: RPB

File Name: Loc 05_Pylon Sign.ai

File Folder: A\Archwell Health\2025
Locations\Germantown - 6201
Germantown Ave - Philadelphia\Shop
Drawings

Project Manager: CR

Location 05

Pylon Sign



1301 Antioch Pike, Nashville, TN 37211
p. 615-885-2900 | f. 615-885-2989

This design is being submitted for use as a product being manufactured for you by Signcraft, Inc. It is not to be reproduced, copied or manufactured by you or given to any other manufacturer without written permission from Signcraft, Inc. Unauthorized use is subject to design charge and will include any collection fees.

Sign Type: Pylon Sign

Construction Details:

- 1 3/16" thick translucent white polycarbonate face with First surface applied translucent vinyl graphics to match PMS 3025c and PMS 165c.

Zoning Permit

Permit Number ZP-2025-006776

LOCATION OF WORK 6201 GERMANTOWN AVE, Philadelphia, PA 19144-2033	PERMIT FEE \$2,315.00	DATE ISSUED 7/13/2025
	ZBA CALENDAR	ZBA DECISION DATE
	ZONING DISTRICTS CMX2	

PERMIT HOLDER DIERKE'S ENTERPRISES	513 FURLONG RD SEBASTOPOL CA 95472
---	------------------------------------

OWNER CONTACT 1 John Dierke	513 Furlong Rd. Sebastopol, CA
------------------------------------	--------------------------------

OWNER CONTACT 2

TYPE OF WORK Signs (Accessory / Non-Accessory)

APPROVED DEVELOPMENT The the erection of four internally illuminated accessory wall signs (2 channel letter signs, 2 wall cabinet signs. For refacing on the existing internally illuminated freestanding sign with two faces.
--

APPROVED USE(S)

THIS PERMIT IS SUBJECT TO THE FOLLOWING PROVISIO(S) AS ESTABLISHED BY THE ZONING BOARD OF ADJUSTMENT (ZBA)
--



CONDITIONS AND LIMITATIONS:

- Permits, including Zoning Permits **not** involving development, shall expire if the authorized work or Use is not commenced within, or if work is suspended or abandoned for period of, **six (6) months from the date of issuance** with the following exceptions:
 - **30-days or 10-days** for Permits related to Unsafe or Imminently Dangerous properties respectively.
 - **3-years** from issuance or date of decision by ZBA for Zoning Permits involving development.
 - **60-days** for Plumbing, Electrical or Fire Suppression Rough-In Approvals.
 - Any Permit issued for construction or demolition is valid for no more than **five (5) years**.
- All provisions of the Philadelphia Code must be complied with, whether specified herein or not. This permit does NOT constitute approval of any Violation of such Code.
- The issuance of this CO/permit does not affirm that the subject property is federally compliant with the Americans with Disabilities Act. Owner remains responsible for ensuring property complies with all local, state and federal requirements.

Zoning Permit

Permit Number ZP-2025-006776

ADDITIONAL LOCATION(S)

See front side for primary parcel associated with this permit

PARCEL

6201 GERMANTOWN AVE, Philadelphia, PA 19144-2033

ADDITIONAL USE DETAILS

See front side for specific use(s) associated with this permit

This permit is subject to the following specific conditions.

CONDITIONS

This Zoning Permit (ZP) shall expire if construction or operation pursuant to the permit or approval has not begun within three years after the date the permit or approval was granted.

Changes of use shall be valid for a period of six months unless an application for a Certificate of Occupancy is submitted for that use within such period.

See § 14-303 of the Philadelphia Zoning Code for more information.



Tax Exemption(Abatement): Information and applications for Real Estate Tax Abatement for new construction and improvements available from the Office of Property Assessment www.phila.gov/opa, 215-686-4334, 601 Walnut St., 300W, Phila, PA 19106. Applications for new construction and commercial improvements due within 60 days of permit issuance. Residential rehab and builder/developer applications due by Dec 31 of year of permit issuance.