

FAST-SEAL

HIGH PERFORMANCE ROLLING DOOR

The Door that Revolutionized the Industry

When it was introduced with the first-ever Break-Away bottom bar, the Fast-Seal high-speed roll door changed the industry forever. Suddenly, a roll door is able to take a hit without suffering damage.

It is this concept around which the industry has grown, but no other manufacturer has matched the dependability or durability of the Fast-Seal with the original Break-Away bottom bar. This, along with its patented counterbalance and tension system, is why the Fast-Seal remains the best exterior high-speed fabric roll door on the market today.



Fast – Opens at up to 50 inches per second.

Safe – Dual electric photo eyes in side column and reversing edge in bottom bar. Optional, replaceable windows for visibility.

Takes a Hit - Patented Break-Away™ bottom bar can be reset in just seconds, without tools, virtually eliminating downtime and repair costs.

System II™ – Patented, independent design separates counterbalance from door tension permitting effective break away and the ability to handle high wind loads and negative pressure.

Full Tension – Patented System II design provides proper counterbalance and panel tension at all times.

Ry-Wi™ System - State-of-the-art wireless technology eliminates the need for a coil cord. Two-way communication and total frequency control ensure safety and eliminate interference.

Low Maintenance – System II design comes with a lifetime warranty on all counterweights and tension springs.



FAST-SEAL

HIGH PERFORMANCE ROLLING DOOR

Model Name

- Rytec® Fast-Seal® Door

Size and Dimensions

- Up to 30' W x 24' H
- 12", 14" & 17" Side Column Configurations.

Safety

- Thru-beam photo eyes
- Ry-Wi™ wireless system
- Dual-chamber pneumatic reversing edge

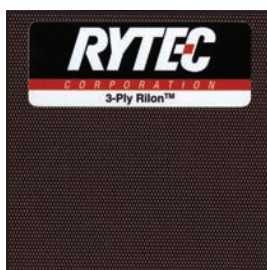
Available Options

- 17" x 17" or 24" x 24" removable windows
- Hood, flat or slant
- Wind bars
- Severe duty motor

Warranty

- One year limited warranty on materials and workmanship.
- Lifetime warranty on counterweights & tension springs.
- Five year limited warranty on 3-ply Rilon™ material.

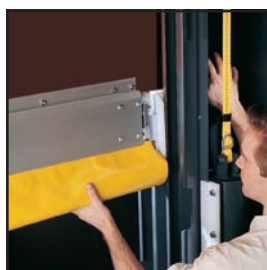
Door Panel



- 85.5 oz, 0.10" thick, 3-ply Rilon material.
- Vertically flexible, but laterally stiff material that helps the door panel remain within the guides even if there is wind or pressure.

Break-Away™ Bottom Bar

- Patented Break-Away extruded aluminum bottom bar capable of breaking away in direction without damage to the bar, reversing edge or side columns.
- Standard dual cut-off switches automatically shut off motor when bottom bar is impacted.
- Bottom bar can be reset in just seconds, without tools.



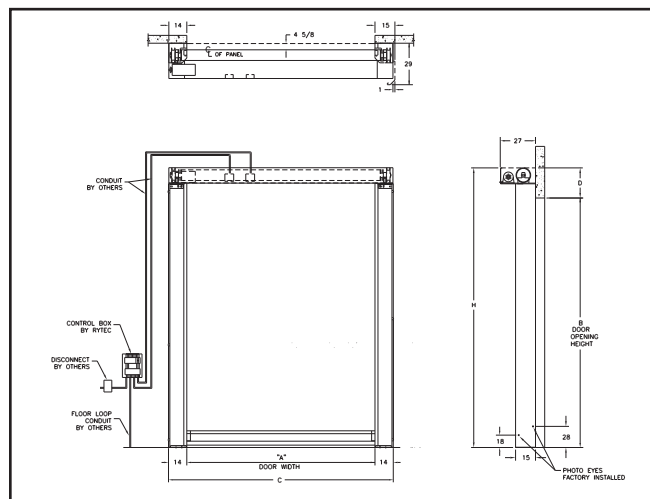
Easily resets, without the need for tools

Electrical Controls



- System 4™ controller housed in a NEMA 4X rated enclosure with factory set parameters.
- Intelligent processor monitors and controls power consumption.
- Advanced self-diagnostics for troubleshooting.

System 4 shown with optional rotary disconnect



Counterbalance & Tensioning

- Patented System II™ design separates counterbalance and fabric tension.
- Counterbalance system consists of guided counterweights custom-sized to provide proper balancing of each door.
- Independent tension system maintains constant panel tension.

Side Frames

- Fully bolt together, reinforced side frames with front and rear wind bar guides.
- Full-height vinyl weather stripping seals against fabric.
- Dual thru-beam photo eyes factory installed in standard models.

Travel Speed

- Opens at up to 50-inches per second.



Patented System II independent counterbalance and tensioning system.



888-GO-RYTEC RytecDoors.com
Tel 262-677-9046 Fax 262-677-2058
One Cedar Parkway Jackson, WI 53037-0403