

SI-450

INFLATABLE DOCK SHELTER

RIGID FRAME SPECIFICATIONS

The Serco SI-450 air inflatable dock shelter allows full, unobstructed access to a wide variety of trailers including those with hydraulic lift gates. Translucent cover panels are securely fastened to top and side frames and allow natural lighting into the dock during loading/unloading operations.

Feature Highlights:

- Side and head air chambers constructed from durable 10 oz/sq. yd. vinyl-coated fabric
- Provides full height and width access to interior of trailer
- Minimal building wall pressure exerted through dock shelter
- Inflated by a high volume, low pressure motor-blower system after the trailer is positioned at the loading dock
- Before the trailer departs, air chambers retract from contact with the trailer and store behind side and head curtains
- Can be interlocked with other dock equipment for improved performance and efficiency



Project Information

Job Name _____
Address _____
General Contractor _____
Serco Distributor _____
Quantity _____

Certified For Construction

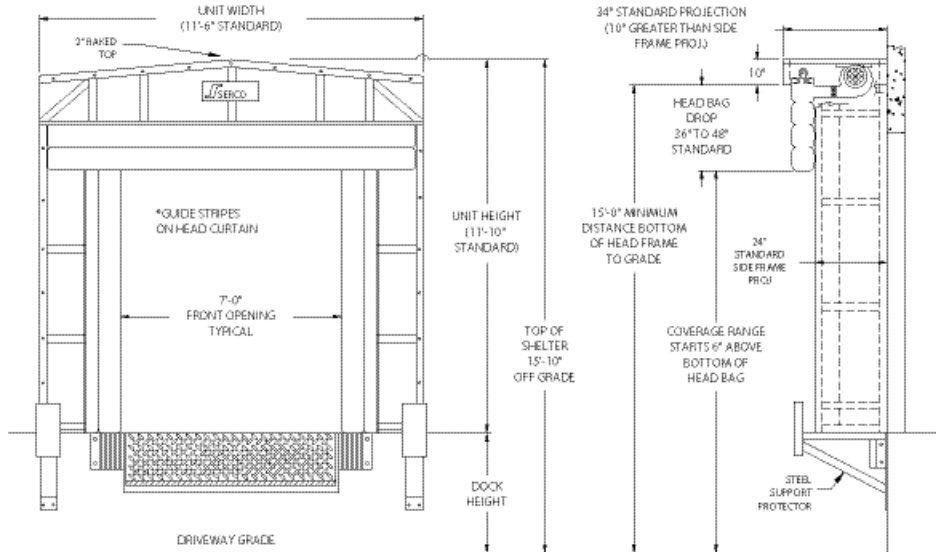
By _____
Date _____
Company _____
Address _____



SI-450

INFLATABLE DOCK SHELTER

RIGID FRAME SPECIFICATIONS



APPLICATION DATA

Door Width: _____ ft. _____ in.

Door Height: _____ ft. _____ in.

Dock Height: _____ ft. _____ in.

Bumper Protection*: _____ in.

(*Includes bumper projection and any building wall/foundation offset or cantilever)

Quantity _____

Please check box from each category

Complete Unit Parts Only (*Indicate Parts required including lefts and rights*)

Frame: Std. Pressure Treated Wood Opt. Painted Steel Tube Opt. Galvanized Steel Tube

Motor/blower: Std. 1/2 HP, 115V, 50/60 Hz, 5.5 Amps (Switch w/pilot light included) None

(Motor can be wired for 220V, 1Ph, 50/60 Hz, 2.8 Amps)

Unit Width: 11'-6" 12'-0" 12'-7" 13'-0"

Unit Height: 11'-10" 12'-6" 13'-0" 13'-6" 14'-0" 14'-6" 15'-0" 15'-6" 16'-0"
 _____" (Note: Taller sizes are typically used for grade level applications)

Head Member Style: Raked Flat

Air Bag Fabric: 10oz Vinyl 16oz Hypalon

Color Choices: Black Blue

Storage Curtain Fabric: 22oz Vinyl 40oz Vinyl 40oz Hypalon

Color Choices: Black Tan Brown Blue Green

Head Bag Drop: 36" 42" 48" 54" 60"

Head Frame/Side Frame Projection: 34"/24" 40"/30" 46"/36" 52"/42" 58"/48"
(Head frame projection is 10" greater than side frame projection)

Draft Pads: None Standard foam

Steel Supports: None 29" 35" 41" 47" 53"

(Steel support projection is 5" greater than side frame projection)

Options: Door Numbers (Specify) Electrical Interconnect (Consult Factory)

NOTE: Not all options are available with all models.

TRUCKS AND TRAILERS SERVICED

Width: _____ Max. _____ Min.

Height: _____ Max. _____ Min.

Length: _____ Max. _____ Min.

Hydraulic Tailgate: Yes No

Rear Step Section: Yes No

Tailgate/Step Section Size: _____ In.

Yard Jockeys: Yes No



Play it safe.