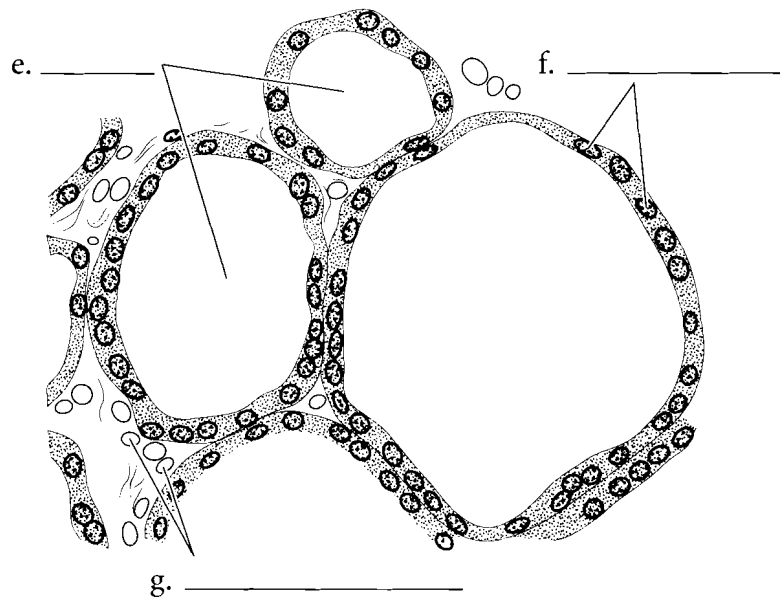
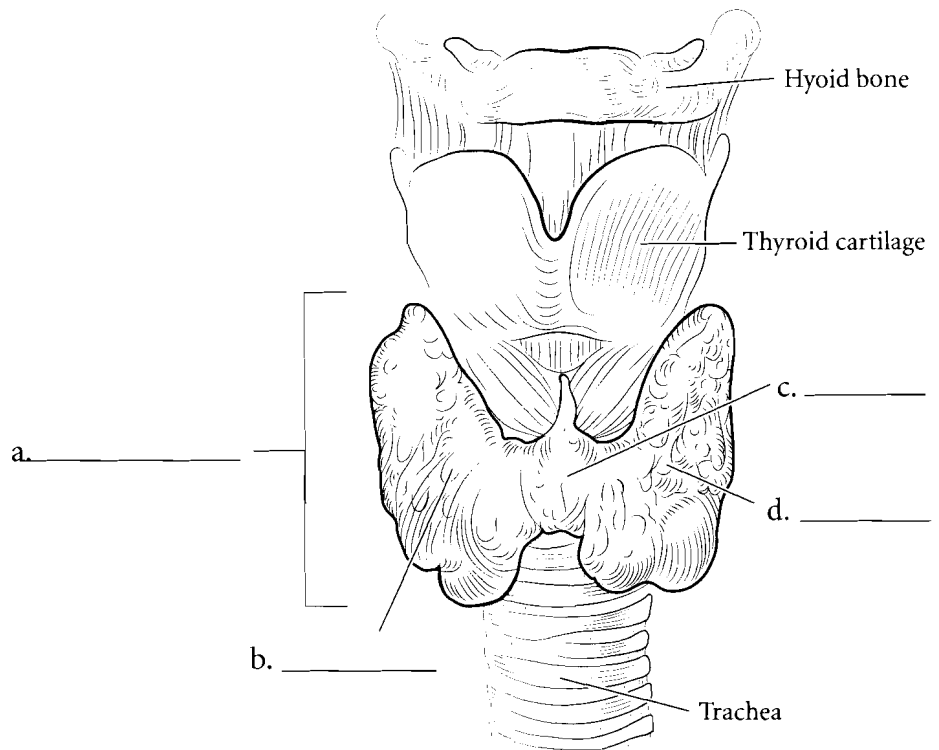


THYROID GLAND

The thyroid gland is just inferior to the thyroid cartilage of the larynx. It has two main **lobes** and a small connection between them called the **isthmus**. The histology of the thyroid is very distinctive. There are cells called **follicular cells** forming a sphere and these make up the follicle. Inside the follicle is the **colloid** where thyroid hormones are stored. The **parafollicular cells** are between the follicles. Label the main parts of the thyroid gland, the follicular cells, the parafollicular cells and the colloid and color them in.



Answer Key: a. Thyroid gland, b. Right lobe, c. Isthmus, d. Left lobe, e. Colloid, f. Follicular cells, g. Parafollicular cells