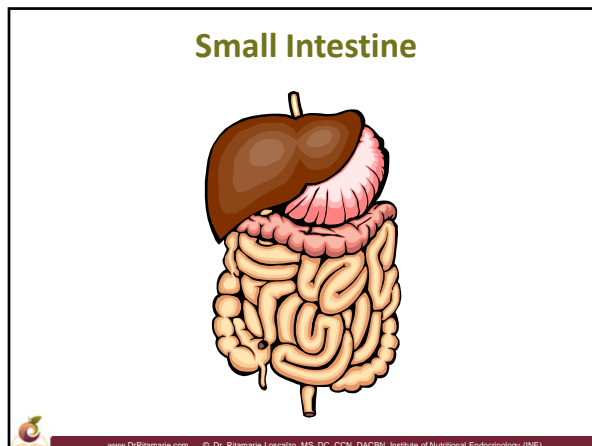
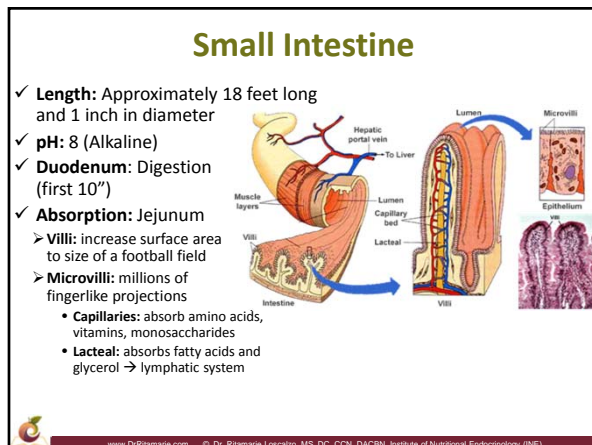
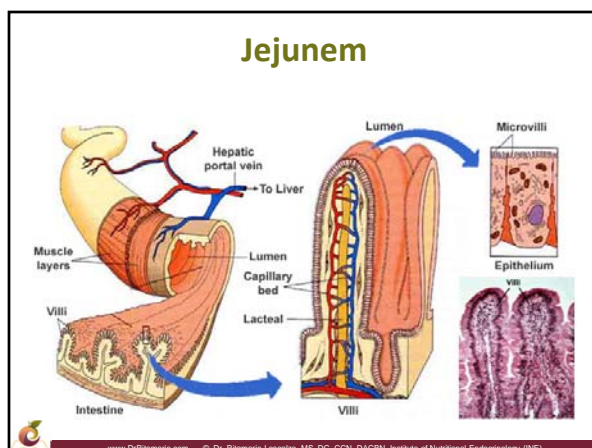


INE: Digestion - The Large and Small Intestines - Anatomy and Physiology

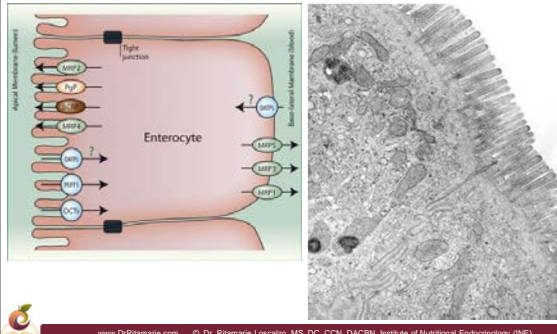






Enterocyte

✓ Basic cells lining small intestine and colon



www.DrRitamarie.com © Dr. Ritamarie Loscalzo, MS, DC, CCN, DACBN, Institute of Nutritional Endocrinology (INE)

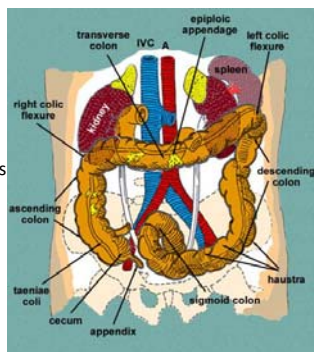
A Peek Inside the Small Intestine



www.DrRitamarie.com © Dr. Ritamarie Loscalzo, MS, DC, CCN, DACBN, Institute of Nutritional Endocrinology (INE)

Large Intestine

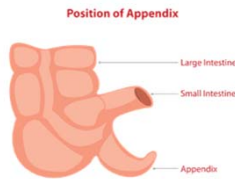
- ✓ 1.5 m in length (about 4 ½ feet)
- ✓ 5 cm in diameter (twice the diameter of SI)
- ✓ Contains bacteria that make Vitamin K and B
- ✓ Absorbs water and minerals
- ✓ Eliminates remaining material: rectum – last 7-8 inches stores feces for release



www.DrRitamarie.com © Dr. Ritamarie Loscalzo, MS, DC, CCN, DACBN, Institute of Nutritional Endocrinology (INE)

The Appendix

- ✓ Barely 4 inches long
- ✓ Controversial
- ✓ Has abundant infection-fighting lymphoid cells, which suggests immune function
- ✓ Believed to act like a bacteria factory, cultivating the good germs



www.DrRitamarie.com © Dr. Ritamarie Loscalzo, MS, DC, CCN, DACBN, Institute of Nutritional Endocrinology (INE)

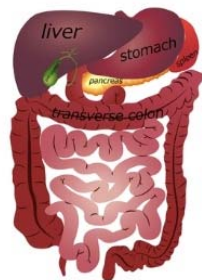
Ileocecal Valve



www.DrRitamarie.com © Dr. Ritamarie Loscalzo, MS, DC, CCN, DACBN, Institute of Nutritional Endocrinology (INE)

Large Intestine Parts

- ✓ Cecum
- ✓ Ascending colon
- ✓ Transverse colon
- ✓ Descending colon
- ✓ Sigmoid colon
- ✓ Rectum
- ✓ Anus: exit



www.DrRitamarie.com © Dr. Ritamarie Loscalzo, MS, DC, CCN, DACBN, Institute of Nutritional Endocrinology (INE)
