



INE | INSTITUTE OF
NUTRITIONAL
ENDOCRINOLOGY

**Digestion:
Endocrinology of Appetite**

Dr. Ritamarie Loscalzo

www.DrRitamarie.com © Dr. Ritamarie Loscalzo, MS, DC, CCN, DACBN, Institute of Nutritional Endocrinology (INE)

Medical Disclaimer: The information in this presentation is not intended to replace a one-on-one relationship with a qualified health care professional and is not intended as medical advice. It is intended as a sharing of knowledge and information from the research and experience of Dr. Ritamarie Loscalzo, drritamarie.com, and the experts who have contributed. We encourage you to make your own health care decisions based upon your research and in partnership with a qualified health care professional. This presentation is provided for informational purposes only and no guarantees, promises, representations or warranties of any kind regarding specific or general benefits, have been or will be made by Dr. Ritamarie Loscalzo, her affiliates or their officers, principals, representatives, agents or employees. Dr. Ritamarie Loscalzo is not responsible for, and shall have no liability for any success or failure, acts and/or omissions, the appropriateness of the participant's decisions, or the use of or reliance on this information.

www.DrRitamarie.com © Dr. Ritamarie Loscalzo, MS, DC, CCN, DACBN, Institute of Nutritional Endocrinology (INE)

Overall Control of Appetite

- ✓ Brain centers
- ✓ Neuropeptides
- ✓ Insulin
- ✓ Adipose hormones
- ✓ Other hormones



Brain Centers That Control Appetite

- ✓ Hypothalamus
- ✓ Brainstem
- ✓ Nucleus accumbens
- ✓ Ventral pallidum
- ✓ Mesolimbic dopamine system (VTA NAc)
- ✓ Other reward centers

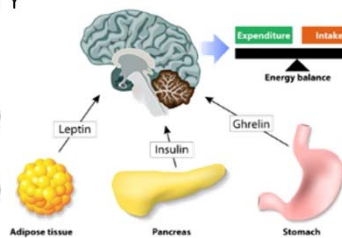


www.DrRitamarie.com © Dr. Ritamarie Loscalzo, MS, DC, CCN, DACBN, Institute of Nutritional Endocrinology (INE)

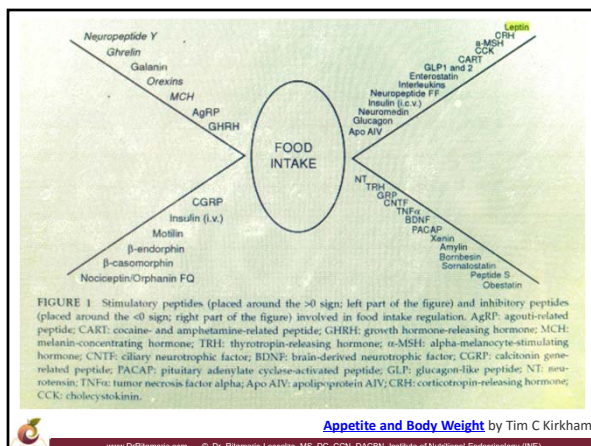
Neuropeptide Control of Appetite

Neuropeptides regulate energy homeostasis.

- Neuropeptide Y
- Leptin
- Orexin-A (hypocretin-1)
- Orexin-B (hypocretin-2)



www.DrRitamarie.com © Dr. Ritamarie Loscalzo, MS, DC, CCN, DACBN, Institute of Nutritional Endocrinology (INE)




www.DrRitamarie.com © Dr. Ritamarie Loscalzo, MS, DC, CCN, DACBN, Institute of Nutritional Endocrinology (INE)

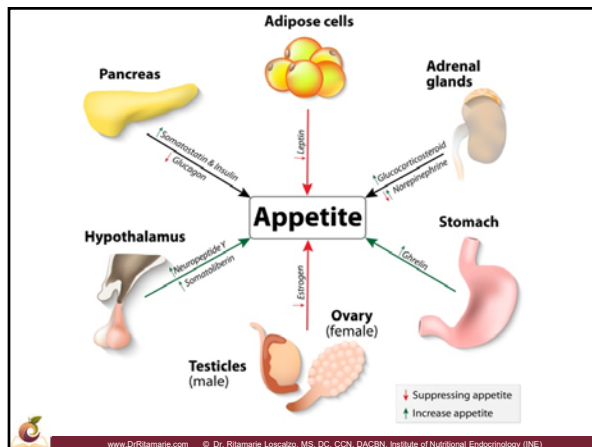
Hormonal Control of Appetite

- ✓ Insulin
- ✓ Glucagon
- ✓ Leptin
- ✓ Ghrelin
- ✓ Other hormones synthesized by adipose tissue
- ✓ Gut hormones

These reflect the long-term nutritional status of the body and are able to influence neural circuits.



www.DrRitamarie.com © Dr. Ritamarie Loscalzo, MS, DC, CCN, DACBN, Institute of Nutritional Endocrinology (INE)



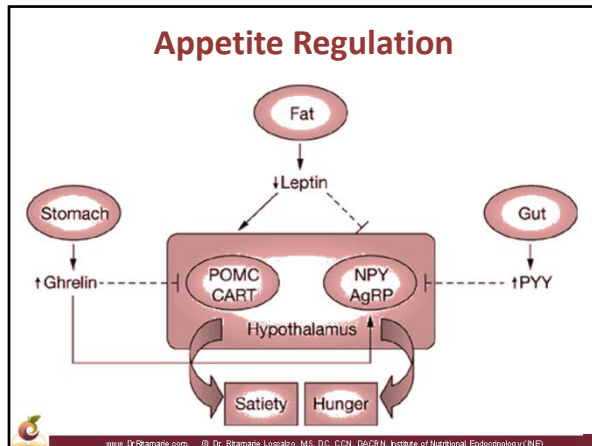
Appetite Hormones	
Hormones	Appetite Related Functions
Amylin	<ul style="list-style-type: none"> • Delays gastric emptying • Lowers blood glucose
CCK (cholecystokinin)	<ul style="list-style-type: none"> • Suppresses hunger and signals satiety • Inhibits gastric emptying • Stimulated gallbladder secretion • Influences PYY release • Stimulated by fat and protein
CRF (corticotropin-releasing factor)	<ul style="list-style-type: none"> • Reduces appetite
Dopamine	<ul style="list-style-type: none"> • Reinforces pleasure from food • Contributes to cravings
Ghrelin	<ul style="list-style-type: none"> • Triggers hunger • Increases preference for fatty and sweet foods • Increases gastric motility

www.DrRitamarie.com © Dr. Ritamarie Loscalzo, MS, DC, CCN, DACBN, Institute of Nutritional Endocrinology (INE)

Appetite Hormones	
Hormones	Appetite Related Functions
GIP (glucose-dependent insulinotropic polypeptide)	<ul style="list-style-type: none"> Stimulates insulin release while eating; diabetics become resistant to GIP
GLP-1 (glucagon like peptide 1)	<ul style="list-style-type: none"> Slows gastric emptying Promotes insulin release and inhibits glucagon Suppresses appetite
Glucagon	<ul style="list-style-type: none"> Increases satiety
Insulin	<ul style="list-style-type: none"> Lowers blood glucose Stimulates glycogen synthesis Stimulates fat synthesis and storage
Leptin	<ul style="list-style-type: none"> Decreases food intake Regulates metabolism
Adiponectin	<ul style="list-style-type: none"> Enhances fatty acid oxidation and reduces triglycerides Stimulates glucose uptake by muscle Inhibits glucose production by the liver Decreases blood glucose levels Decreases appetite

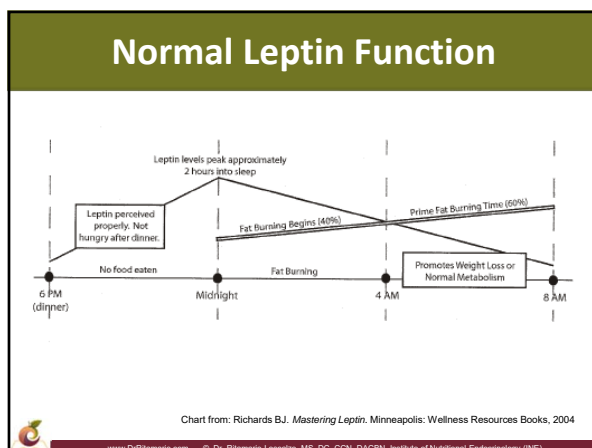
Appetite Hormones	
Hormones	Appetite Related Functions
NPY (neuropeptide Y)	<ul style="list-style-type: none"> Stimulates appetite
OXM (oxyntomodulin)	<ul style="list-style-type: none"> Inhibits ghrelin secretion Suppresses appetite Slows gastric emptying Stimulates insulin release after carbohydrate intake
PP (pancreatic polypeptide)	<ul style="list-style-type: none"> Slows gastric emptying
PYY (peptide YY)	<ul style="list-style-type: none"> Slows gastric emptying Suppresses appetite Stimulates satiety (levels are highest 90 minutes after starting a meal)
Serotonin	<ul style="list-style-type: none"> Decrease linked with carbohydrate cravings Provides calm feeling after eating sugar
Orexin	<ul style="list-style-type: none"> Promotes eating beyond satiety

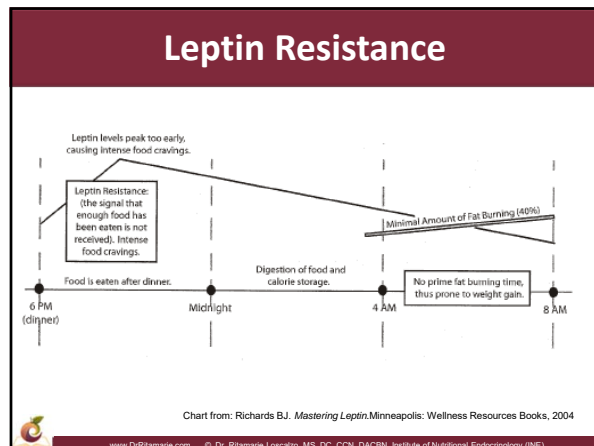
Other Hormones that Influence Appetite	
Hormones	Appetite Related Functions
Melatonin	<ul style="list-style-type: none"> Sleep deprivation decreases melatonin production, which decreases leptin and increases ghrelin production
Sex hormones	<ul style="list-style-type: none"> Estrogen suppresses appetite Imbalance estrogen /progesterone ratio can trigger intense food cravings
Cortisol	<ul style="list-style-type: none"> Sustained high levels can lead to intense cravings and binge eating



Leptin


- ✓ Secreted by the fat cells – the white adipose tissue
- ✓ Signals the hypothalamus and pancreas “we are full”
- ✓ Hypothalamus response is to turn off appetite
- ✓ Pancreas response is to stop producing insulin
- ✓ Has a 24-hour circadian rhythm and is controlled by eating
- ✓ Pancreas and hypothalamus become leptin resistant





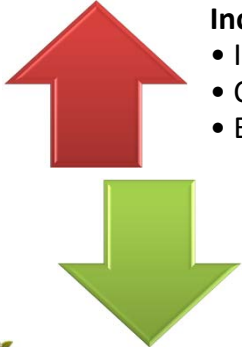
Things That Disrupt Leptin Signaling

- ✓ High carbohydrate meal in the morning
- ✓ Eating too frequently
- ✓ Insufficient sleep
- ✓ Insulin resistance
- ✓ Fungicide tolylfluanid and other endocrine disruptors
- ✓ Bisphenol A (BPA)



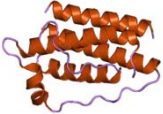
www.DrRitamarie.com © Dr. Ritamarie Loscalzo, MS, DC, CCN, DACBN, Institute of Nutritional Endocrinology (INE)

Leptin Modulation



Increase:

- Insulin
- Cortisone
- Estrogens





Decrease:

- Adrenaline
- Male hormones
- Growth hormone

www.DrRitamarie.com © Dr. Ritamarie Loscalzo, MS, DC, CCN, DACBN, Institute of Nutritional Endocrinology (INE)

Optimizing Leptin and Insulin



- ✓ Avoid eating after dinner
- ✓ Stick to three meals a day; no snacking
- ✓ Allow five to six hours between meals
- ✓ Avoid large meals
- ✓ Eat slowly
- ✓ Eat a breakfast containing protein
- ✓ Reduce intake of starchy carbohydrates



www.DrRitamarie.com © Dr. Ritamarie Loscalzo, MS, DC, CCN, DACBN, Institute of Nutritional Endocrinology (INE)

Meal Timing and Leptin



- ✓ **Avoid snacking:** Prolonged insulin curves or more frequent insulin spikes plus decreased leptin promote obesity
- ✓ **Maintain ideal body weight:** Obesity increases insulin resistance
- ✓ **Avoid eating at night:** Late eating increases insulin and decreases growth hormone and leptin
- ✓ **Avoid high-carbohydrate breakfasts:** Morning carb overdoses cause a premature spike in leptin and food cravings
- ✓ **Eat protein within an hour of waking:** Morning protein consumption promotes growth hormone and regulates insulin



www.DrRitamarie.com © Dr. Ritamarie Loscalzo, MS, DC, CCN, DACBN, Institute of Nutritional Endocrinology (INE)

Ghrelin

- ✓ Secreted by cells in the stomach wall
- ✓ Eating suppresses ghrelin
- ✓ An empty stomach secretes ghrelin freely
- ✓ Ghrelin stimulates appetite
- ✓ Ghrelin is a potent stimulator of growth hormone
- ✓ Waiting to eat until very hungry and stomach is empty stimulates fat burning and muscle sparing



www.DrRitamarie.com © Dr. Ritamarie Loscalzo, MS, DC, CCN, DACBN, Institute of Nutritional Endocrinology (INE)

Resistin

- ✓ Peptide secreted by fat cells
- ✓ Discovered in 1995
- ✓ Named for ability to resist insulin
- ✓ Links obesity, insulin resistance, and diabetes
- ✓ AKA adipose tissue-specific secretory factor (ADSF)
- ✓ Cysteine-rich adipose-derived peptide hormone encoded by the RETN gene
- ✓ Increases insulin resistance as more fat cells accumulate around the waist
- ✓ These fat cells secrete leptin

Resistin

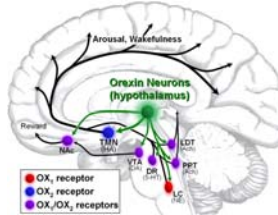


<http://www.drRitamarie.com/go/ResistinFunctionalRoles>

www.DrRitamarie.com © Dr. Ritamarie Loscalzo, MS, DC, CCN, DACBN, Institute of Nutritional Endocrinology (INE)

Orexin

- ✓ A neuropeptide released by the posterior lateral hypothalamus
- ✓ Linked to wakefulness and sleep, appetite regulation, and the motivation of sexual and addictive behaviors
- ✓ Often described as “a hormone in the brain with the effects of adrenaline and testosterone in one”
- ✓ Plays a key role in promoting eating and appetite and seems to work to signal “eat more,” beyond satiety
- ✓ Two variations identified



www.DrRitamarie.com © Dr. Ritamarie Loscalzo, MS, DC, CCN, DACBN, Institute of Nutritional Endocrinology (INE)

Neuropeptide Y (NPY)

- ✓ Most abundant neuropeptide in the brain
- ✓ Possibly stronger than ghrelin at stimulating appetite
- ✓ Rats given an NPY will crave sugar water over sex
- ✓ The primary trigger is calorie restriction and low leptin
- ✓ Primary job is to delay the feeling of fullness
- ✓ Tells the body where and how to store extra calories as either fat or muscle
- ✓ High levels will cause less fullness and calories will preferentially be stored as fat



www.DrRitamarie.com © Dr. Ritamarie Loscalzo, MS, DC, CCN, DACBN, Institute of Nutritional Endocrinology (INE)

Neuropeptide Y (NPY) Interactions

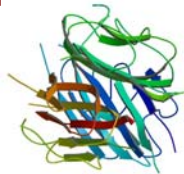
- ✓ Leptin inhibits NPY
- ✓ Hypothalamic NPY stimulates the secretion of insulin and cortisol and shifts metabolism to favor synthesis and storage of fat
- ✓ Weight loss caused by caloric restriction ("dieting") stimulates NPY release in the periventricular nucleus



www.DrRitamarie.com © Dr. Ritamarie Loscalzo, MS, DC, CCN, DACBN, Institute of Nutritional Endocrinology (INE)

Adiponectin

- ✓ 244-amino-acid-long polypeptide
- ✓ Produced by adipose
- ✓ Increases metabolic rate
- ✓ Plays an important role in the energetic capacity of skeletal muscle
- ✓ Counteracts inflammation and insulin resistance
- ✓ Important for weight loss
- ✓ Increases insulin sensitivity and effects insulin levels
- ✓ A deficiency makes it almost impossible to melt fat and stay thin - helps the body use fat to fuel muscle cells



www.DrRitamarie.com © Dr. Ritamarie Loscalzo, MS, DC, CCN, DACBN, Institute of Nutritional Endocrinology (INE)

Adiponectin Causes Weight Loss Without Affecting Appetite

- ✓ Receptors in the hypothalamus and some forms enter the cerebrospinal fluid
- ✓ Enhances fatty acid oxidation in muscle and liver, thus reduces triglyceride content in these tissues
- ✓ Stimulates glucose uptake by skeletal and cardiac muscle and inhibits glucose production by the liver
- ✓ Decreases blood glucose levels
- ✓ Needed to turn fat into energy - helps the body use fat to fuel muscle cells



www.DrRitamarie.com © Dr. Ritamarie Loscalzo, MS, DC, CCN, DACBN, Institute of Nutritional Endocrinology (INE)

Food and Adiponectin

- ✓ Daily intake of **fish or omega-3** supplementation increased adiponectin levels by 14-60%
- ✓ **Weight loss with low-calorie diet plus exercise** increased adiponectin levels in the range of 18-48%
- ✓ A 60-115% increase in adiponectin levels with **fiber supplementation**
- ✓ **High-carbohydrate meals** associated with lower adiponectin
- ✓ **Extracts of sweet potatoes** have been reported to increase levels



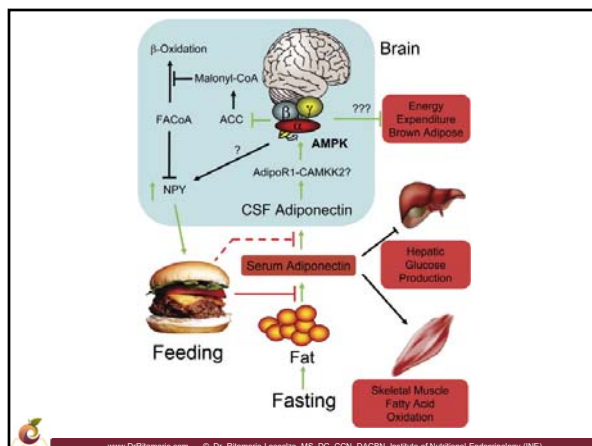
www.DrRitamarie.com © Dr. Ritamarie Loscalzo, MS, DC, CCN, DACBN, Institute of Nutritional Endocrinology (INE)

Diet and Adiponectin

- ✓ **Magnesium** associated with higher adiponectin
- ✓ **Coffee** associated with high adiponectin and low leptin
- ✓ Moderate **alcohol** intake is associated with higher adiponectin concentrations
- ✓ **Intermittent fasting** can increase adiponectin levels
- ✓ **Sleep can** increase adiponectin levels
- ✓ **Ayurvedic combination**
 - Betel - *Piper betle*
 - *Dolichos biflorus*



www.DrRitamarie.com © Dr. Ritamarie Loscalzo, MS, DC, CCN, DACBN, Institute of Nutritional Endocrinology (INE)



www.DrRitamarie.com © Dr. Ritamarie Loscalzo, MS, DC, CCN, DACBN, Institute of Nutritional Endocrinology (INE)

Adiponectin and Inflammation

✓ Study In Mice:

- Mice given TNF-alpha, which caused the release of inflammatory cytokines
- Injecting with adiponectin reversed the effects of the cytokines and inflammation



www.DrRitamarie.com © Dr. Ritamarie Loscalzo, MS, DC, CCN, DACBN, Institute of Nutritional Endocrinology (INE)

Effects of Adiponectin

- ✓ Decreases gluconeogenesis
- ✓ Increases glucose uptake
- ✓ Increases β -oxidation
- ✓ Increases triglyceride clearance
- ✓ Protection from endothelial dysfunction
- ✓ Improves insulin sensitivity
- ✓ Promotes weight loss
- ✓ Controls energy metabolism
- ✓ Reduces TNF alpha



www.DrRitamarie.com © Dr. Ritamarie Loscalzo, MS, DC, CCN, DACBN, Institute of Nutritional Endocrinology (INE)

Adiponectin Connections

- ✓ Lower levels associated with ADHD in adults
- ✓ Increased in rheumatoid arthritis
- ✓ Exercise-induced release of adiponectin increased hippocampal growth and led to antidepressive symptoms in mice



www.DrRitamarie.com © Dr. Ritamarie Loscalzo, MS, DC, CCN, DACBN, Institute of Nutritional Endocrinology (INE)

Adiponectin and Fats

✓ 10 week study with 17 healthy subjects

- Increased omega-3 intake and decreased omega-6 intake
- Result: Significant reductions in TNF-alpha and low-density lipoprotein-cholesterol along with increased adiponectin

Nutritional intervention to reduce the n-6/n-3 fatty acid ratio increases adiponectin concentration and fatty acid oxidation in healthy subjects. Eur J Clin Nutrition. 2007.



✓ Adiponectin as a marker for metabolic syndrome

Int J Clin Exp Med. 2014. Adiponectin and visfatin may serve as diagnosis markers for metabolic syndrome in Uyghur population.



www.DrRitamarie.com © Dr. Ritamarie Loscalzo, MS, DC, CCN, DACBN, Institute of Nutritional Endocrinology (INE)

Resources and References

- ✓ <http://www.drritamarie.com/go/AppetiteControl>
- ✓ <http://www.drritamarie.com/go/NeuropeptidesFoodIntake>
- ✓ <http://www.drritamarie.com/go/OrexinHypocretin>
- ✓ <http://www.drritamarie.com/go/AWeightyMatter>
- ✓ <http://www.drritamarie.com/go/PharmacologicalManagementOfAppetite>
- ✓ <http://www.drritamarie.com/go/HypothalamicAppetiteRegulation>
- ✓ <http://www.drritamarie.com/go/HormonalRegulatorsOfAppetite>
- ✓ <http://www.drritamarie.com/go/AppetiteRegulation>
- ✓ <http://www.drritamarie.com/go/BrainRewardPathway>
- ✓ <http://www.drritamarie.com/go/PMID22387882>
- ✓ <http://www.drritamarie.com/go/BPAasObesogen>



www.DrRitamarie.com © Dr. Ritamarie Loscalzo, MS, DC, CCN, DACBN, Institute of Nutritional Endocrinology (INE)

Resources and References

- ✓ <http://www.drritamarie.com/go/ShortSleepDuration>
- ✓ <http://www.drritamarie.com/go/LeptinLevelsSleepDuration>
- ✓ <http://www.drritamarie.com/go/AdiponectinCausesWeightLoss>
- ✓ <http://www.drritamarie.com/go/RoleOfAdiponectin>
- ✓ <http://www.drritamarie.com/go/OpposingEffectsOfAdiponectin>
- ✓ <http://www.drritamarie.com/go/EffectOfDietOnAdiponectin>
- ✓ <http://www.drritamarie.com/go/CoffeeAndAdiponectin>
- ✓ <http://www.drritamarie.com/go/DietaryFactorsAndAdiponectin>
- ✓ <http://www.drritamarie.com/go/AdiponectinbyRaySahelian>
- ✓ <http://www.drritamarie.com/go/AppetiteHormones>
- ✓ <http://www.drritamarie.com/go/HungerHormones>
- ✓ <http://www.drritamarie.com/go/EatingForPleasureOrCalories>



www.DrRitamarie.com © Dr. Ritamarie Loscalzo, MS, DC, CCN, DACBN, Institute of Nutritional Endocrinology (INE)
