

Epson SureColor T-3270/5270/7270



WinProfile **INSTALLATION GUIDE** Windows 8

⚠ CAUTION

DO NOT INSTALL THE EPSON (OEM) INKS OR PAPER THAT WERE PROVIDED WITH THE PRINTER.

SECTIONS:

The steps outlined below are required to complete the installation and configuration process of the Epson SC-T3270, 5270 or 7270 printer driver and SubliJet-E WinProfile on a computer running Microsoft Windows 8. For optimum results, perform the steps in the order presented.

- | | |
|---|---------|
| 1) Verify the version of the Windows operating system | Page 1 |
| 2) Download and install the Epson printer driver | Page 2 |
| 3) Configure the Epson printer driver | Page 10 |
| 4) Download, install and register the SubliJet-E WinProfile | Page 14 |
| 5) Configure your design software * (i.e. CorelDRAW, Photoshop, Illustrator, etc) | * |
| 6) Using the Sawgrass color palette * | * |

** Steps 1-4 are included in this document. Steps 5 and 6 are located on the SubliJet-E SC-T3270, 5270 and 7270 WinProfile Installation and Configuration webpage on sawgrassink.com and can be accessed by the links provided above.*

Epson SC-T3270/5270/7270

Installation and Configuration Guide - Windows 8

Step 1 of 6: Verify the Operating System Version

To begin, verify your version of the Windows operating system to download the compatible driver.

- 1) To check the version, hold down the Windows Logo key on the keyboard, then press the “Pause/Break” key (or your keyboard may only have the “Pause” key) (see *FIGURE 1*).



FIGURE 1

- 2) The screen shown below should appear. Note the **Windows Edition** and **System Type**. The example pictured below is running Windows 8 on a 64-bit operating system. Note your version and only download the driver that is compatible with that version (see *FIGURE 2*).

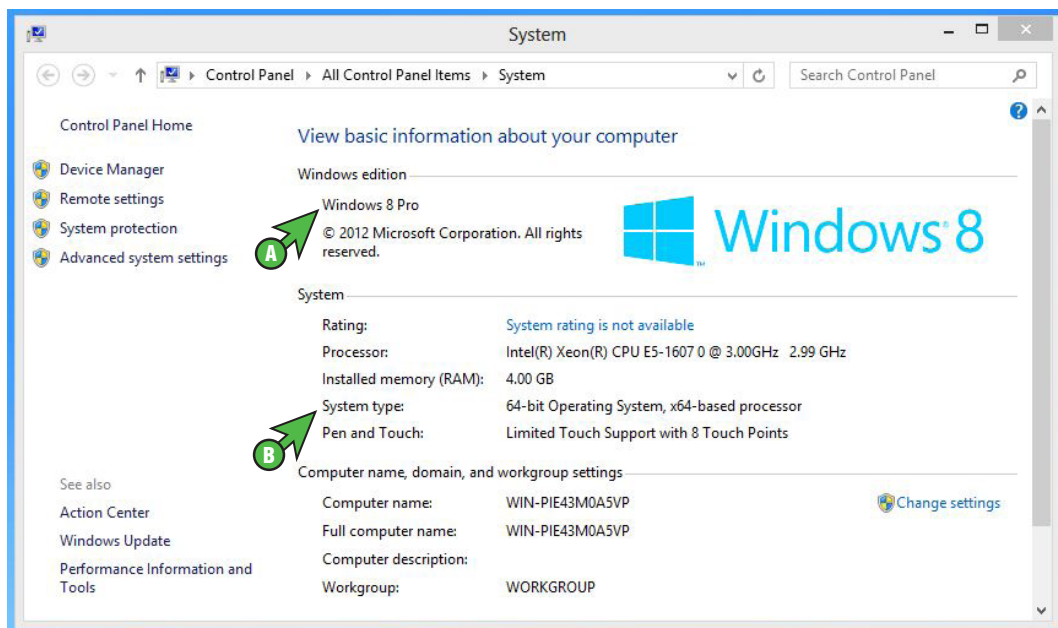


FIGURE 2

Now that the version of the Windows operating system is known, proceed to **Step 2, Epson Printer Driver Download and Installation**.

Epson SC-T3270/5270/7270

Installation and Configuration Guide - Windows 8

Step 2 of 6: Epson Printer Driver Download and Installation

The following instructions explain how to download and install the Epson printer driver on a computer running Windows. These instructions feature Windows 8 and Internet Explorer 11. Your experience may differ based on the operating system and internet browser being used.

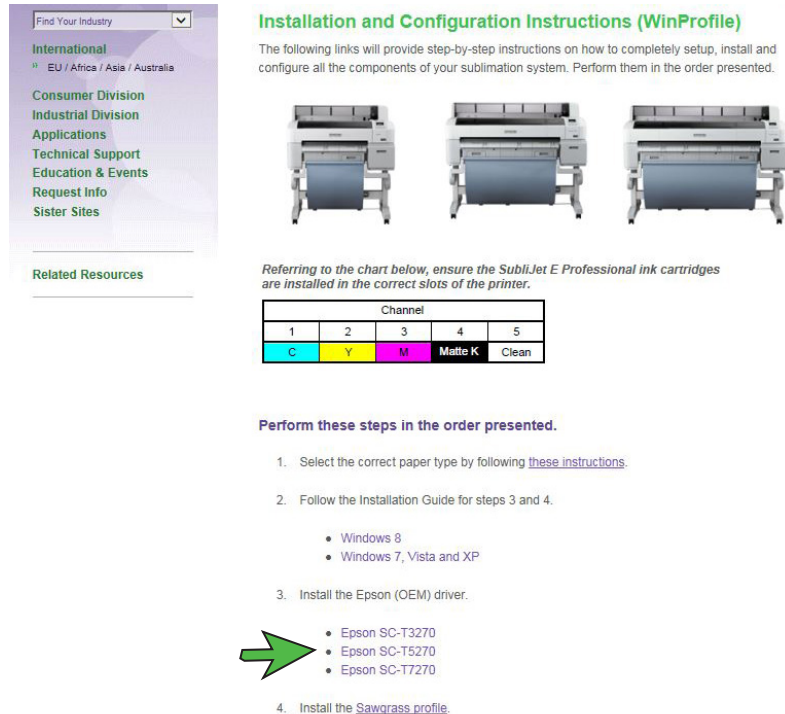
- 1) Locate the Sawgrass Technologies website by entering sawgrassink.com in the address field of your web browser. Once there, hold the mouse arrow over **Technical Support**. From the drop down list that appears select **SubliJet-E**, **Epson SC-T3270/5270/7270**, **WinProfile** then **Installation and Configuration Instructions** (see *FIGURE 1*).



FIGURE 1

Step 2 of 6: Epson Printer Driver Download and Installation

- 2) Once on the appropriate Installation and Configuration Instructions webpage for your setup, click on the link in Step 3 for your particular printer, **Install the Epson (OEM) driver**. For these instructions, we will install the Epson SC-T3270 driver but the T5270 and T7270 steps will be the same (see *FIGURE 2*).



Installation and Configuration Instructions (WinProfile)

The following links will provide step-by-step instructions on how to completely setup, install and configure all the components of your sublimation system. Perform them in the order presented.

Referring to the chart below, ensure the SubliJet E Professional ink cartridges are installed in the correct slots of the printer.

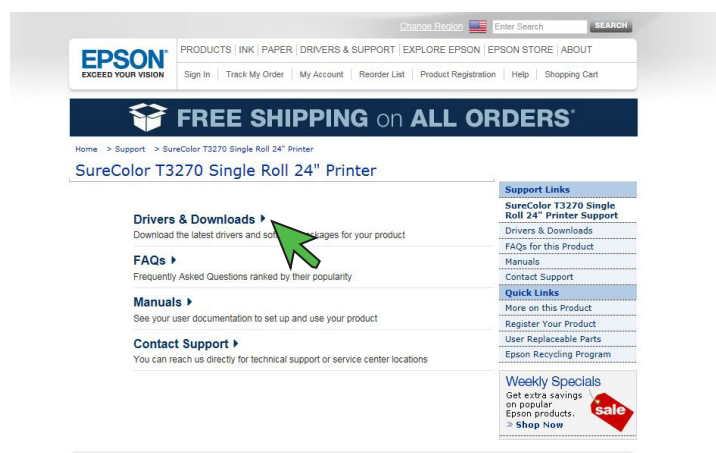
Channel				
1	2	3	4	5
C	Y	M	Matte K	Clean

Perform these steps in the order presented.

1. Select the correct paper type by following [these instructions](#).
2. Follow the Installation Guide for steps 3 and 4.
 - Windows 8
 - Windows 7, Vista and XP
3. Install the Epson (OEM) driver.
 - Epson SC-T3270
 - Epson SC-T5270
 - Epson SC-T7270
4. Install the [Sawgrass profile](#).

FIGURE 2

- 3) This will take you directly to the SC-T3270 section of Epson's website. Click on **Drivers and Downloads** (see *FIGURE 3*).



EPSON EXCEED YOUR VISION

PRODUCTS | INK | PAPER | DRIVERS & SUPPORT | EXPLORE EPSON | EPSON STORE | ABOUT

Sign In | Track My Order | My Account | Reorder List | Product Registration | Help | Shopping Cart

FREE SHIPPING on ALL ORDERS*

Home > Support > SureColor T3270 Single Roll 24" Printer

SureColor T3270 Single Roll 24" Printer

Drivers & Downloads ▶
Download the latest drivers and software packages for your product

FAQs ▶
Frequently Asked Questions ranked by their popularity

Manuals ▶
See your user documentation to set up and use your product

Contact Support ▶
You can reach us directly for technical support or service center locations

Support Links
SureColor T3270 Single Roll 24" Printer Support
Drivers & Downloads
FAQs for this Product
Manuals
Contact Support

Quick Links
More on this Product
Register Your Product
User Replaceable Parts
Epson Recycling Program

Weekly Specials
Get extra savings on popular Epson products.
Shop Now

FIGURE 3

Step 2 of 6: Epson Printer Driver Download and Installation

- 4) Verify that the correct **Operating System** is selected. If so, click on **Drivers** (see *FIGURE 4*).

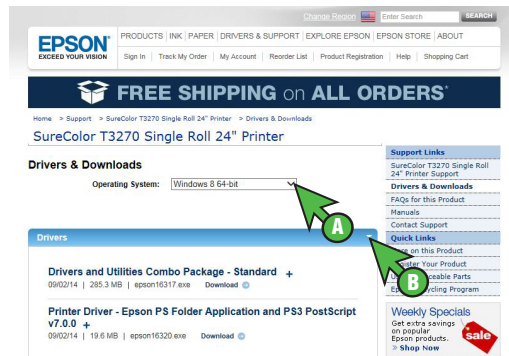


FIGURE 4

- 5) Click on the **Download** that is associated with the **Driver and Utilities combo package** only (Not the Epson PS Folder Application and PS3 PostScript) (see *FIGURE 5*).

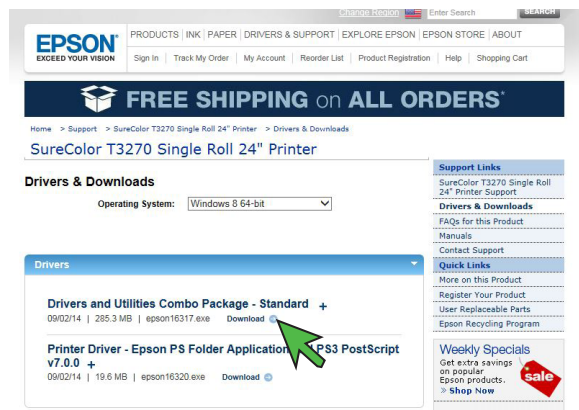


FIGURE 5

- 6) The download should begin automatically. If you do not see a download prompt within 5 seconds, click **download the file manually** (see *FIGURE 6*).

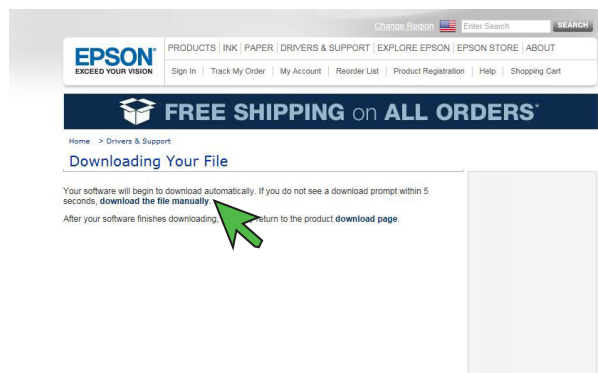


FIGURE 6

Note: At anytime during the download and installation process, your firewall or virus protection software may present warnings. Make the appropriate selections necessary to continue.

Step 2 of 6: Epson Printer Driver Download and Installation

- 7) The following window will appear asking if you want to Run, Save or Cancel. Click **Save** (see *FIGURE 7*).

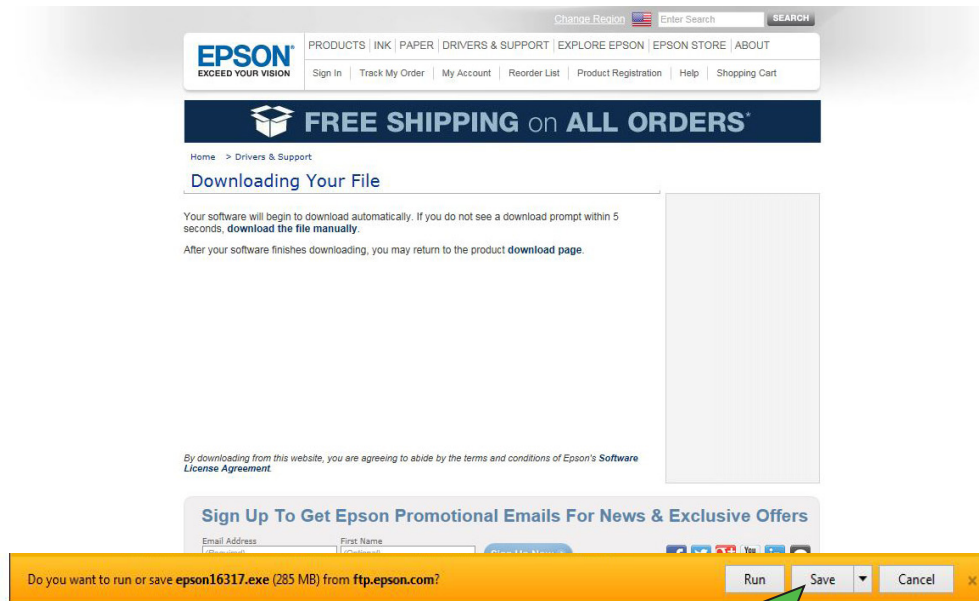


FIGURE 7

- 8) The file will begin downloading into the Downloads folder on your computer. When complete, the download message at the bottom of the screen will give you the option to **Run**, **Open Folder** or **View downloads**. Click **Run** (see *FIGURE 8*).

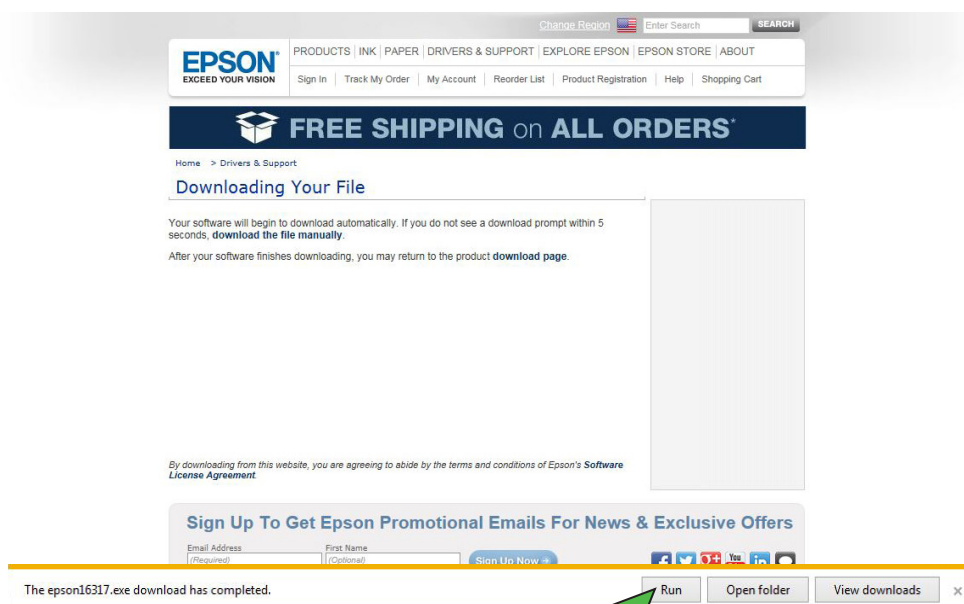


FIGURE 8

Step 2 of 6: Epson Printer Driver Download and Installation

- 9) An Epson Installer window will appear instructing you to click Ok to continue. Click **OK**. The WinZip Self-Extractor will start running (see *FIGURE 9*).

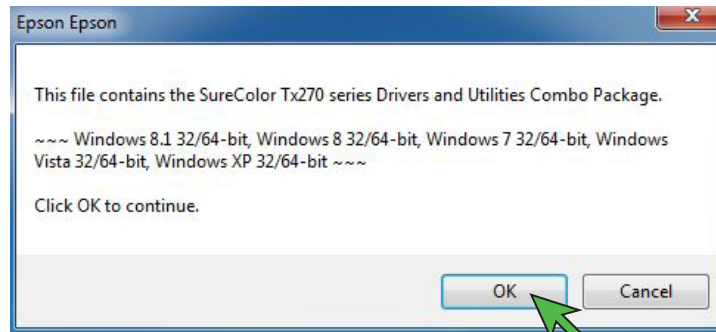


FIGURE 9

- 10) You must accept the Software License Agreement before you can install the printer driver. If you agree with the terms click **Accept** (see *FIGURE 10*).

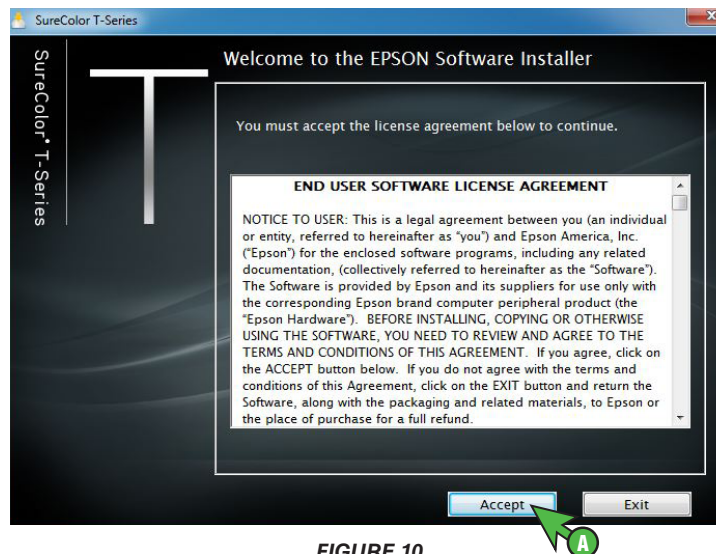
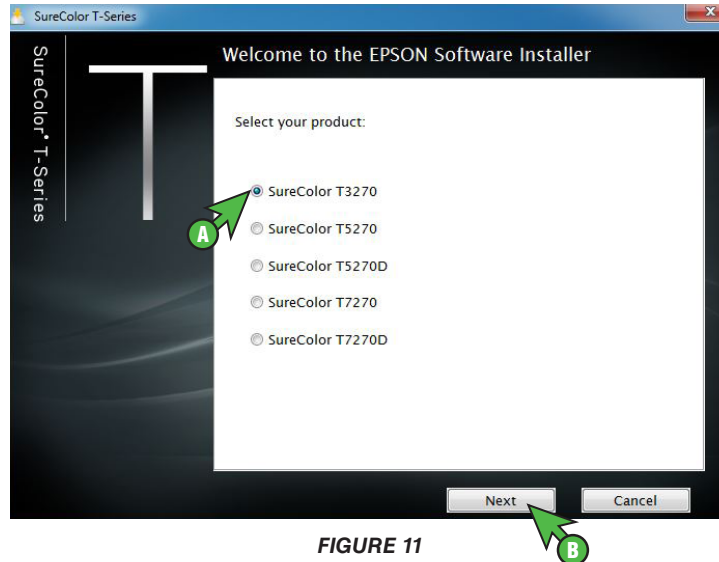


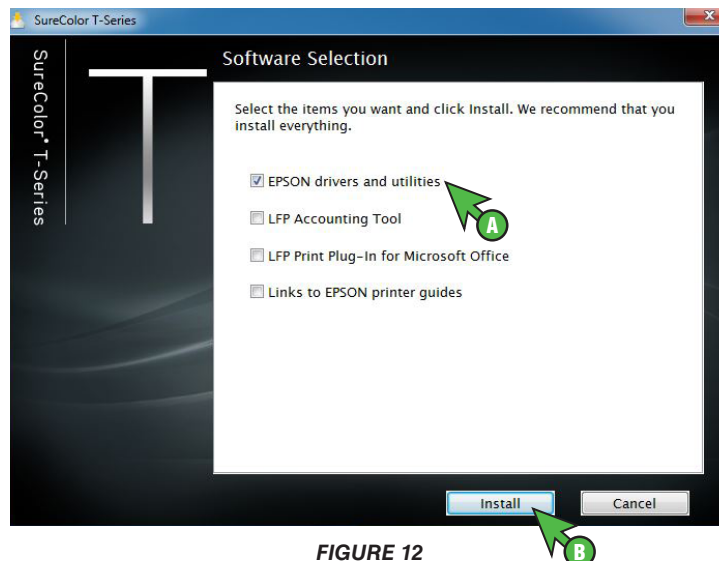
FIGURE 10

Step 2 of 6: Epson Printer Driver Download and Installation

- 11) In the Epson Software Installer screen that opens, select the printer to install. There are 5 options, select either the SureColor T3270, SureColor T5270 or SureColor T7270. Then click **Next** (see *FIGURE 11*).



- 12) Next, select the software to install. Only install the **Epson drivers and utilities**. Uncheck the other options. Click **Install** (see *FIGURE 12*).



Step 2 of 6: Epson Printer Driver Download and Installation

- 13) Select whether this printer will be connected via a network. For this instance, select **No: USB connection**. Then click **OK** (see *FIGURE 13*).

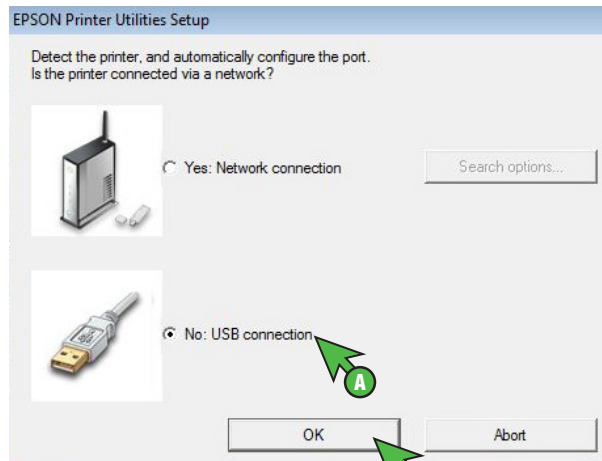


FIGURE 13

- 14) The following window will appear signifying that the installation was successful. Click **OK** to continue the installation (see *FIGURE 14*).

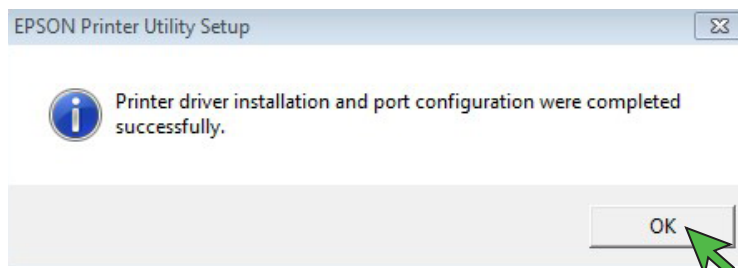


FIGURE 14

Step 2 of 6: Epson Printer Driver Download and Installation

- 15) Select the language of the software application to install. Then click **OK** (see *FIGURE 15*).

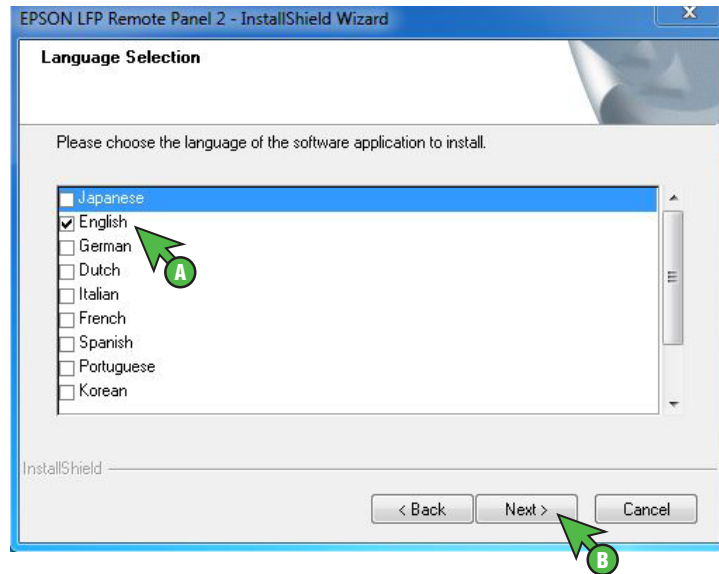


FIGURE 15

- 16) The following window will appear signifying that the installation was complete. Click **Exit** to conclude the installation (see *FIGURE 16*).

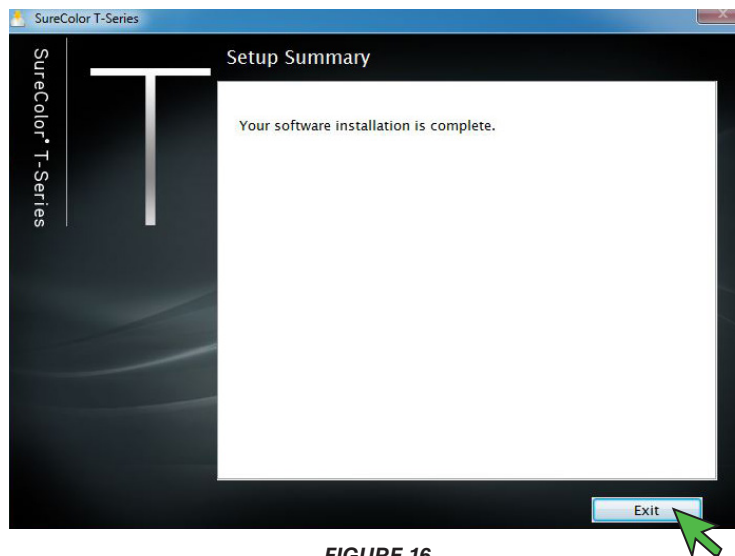


FIGURE 16

The Epson printer driver installation is complete. Proceed to **Step 3, Epson Print Driver Configuration**.

Epson SC-T3270/5270/7270

Installation and Configuration Guide - Windows 8 Step 3 of 6: Epson Printer Driver Configuration

The following instructions explain how to properly configure the Epson SC-T3270/5270/7270 printer driver to work with the SubliJet-E WinProfile.

- 1) To configure the Epson driver, hold down the Windows logo key on your keyboard, then press the letter “X”. This will open the screen below. Select **Control Panel** (see *FIGURE 1A*). Then select **Devices and Printers** in the Control Panel window (see *FIGURE 1B*).

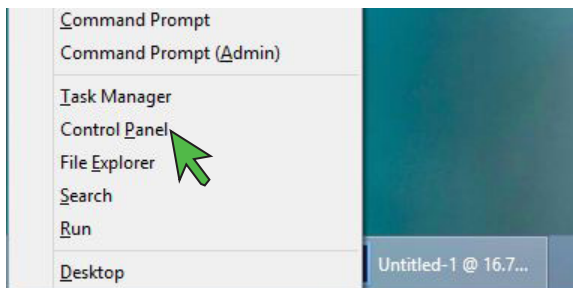


FIGURE 1A

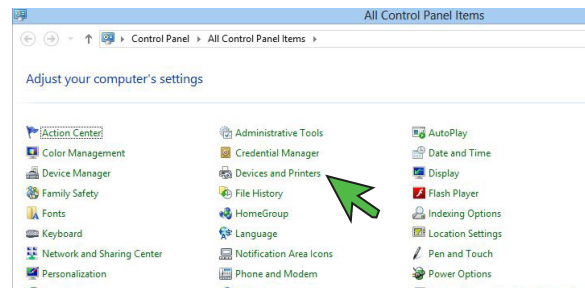


FIGURE 1B

- 2) In the **Printers** folder, right-click on the Epson SC-T3200/5200/7200 Series printer driver icon and select **Printing Preferences** (see *FIGURE 2*).

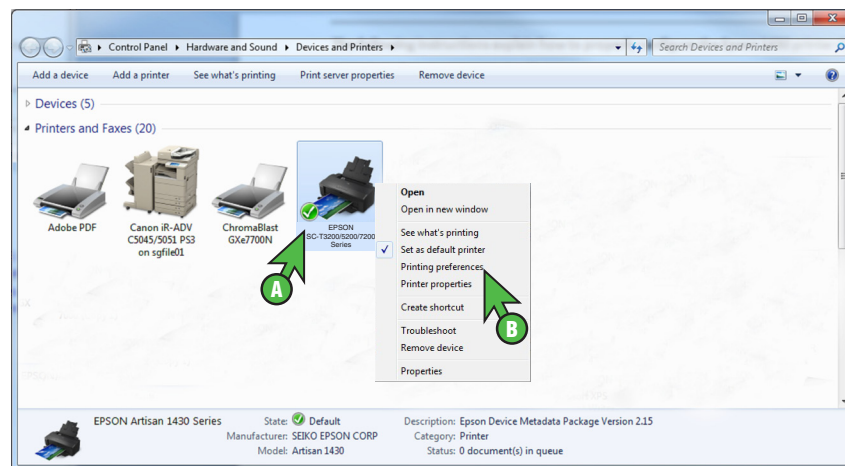


FIGURE 2

NOTE: The Epson SC-T3200/5200/7200 Printing Preferences window may also be accessed by clicking “Print Properties” or “Print Preferences” within the print window of the graphic design software. Also the 3200/5200/7200 Series shares a print driver with the 3270/5270/7270 Series.

Step 3 of 6: Epson Printer Driver Configuration

- 3) In the Epson SC-T3200/5200/7200 Series Printing Preferences window, click the **Printer Settings** tab and match your settings to those shown below: (see *FIGURE 3*)

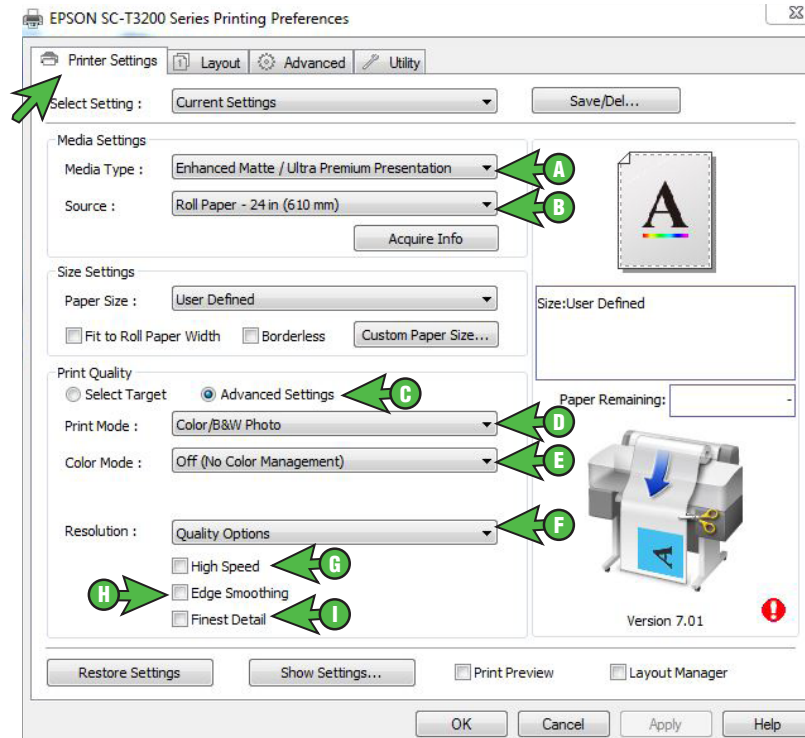


FIGURE 3

- A. Media Type: **Matte Paper - Enhanced Matte / Ultra Premium Presentation**
- B. Source: **Select the appropriate roll paper size based on your printer**
- C. Print Quality: **Advanced Settings**
- D. Print Mode: **Color/B&W Photo**
- E. Color Mode: **Off (No Color Management)**
- F. Resolution: **Quality Options - Level 5 (Max Quality)** and then click **OK** (see *FIGURE 4*)

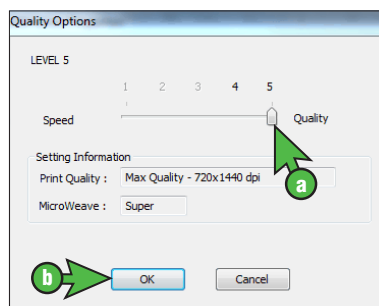


FIGURE 4

- G. Uncheck: **High Speed** (see *FIGURE 3*)
- H. Uncheck: **Edge Smoothing** (see *FIGURE 3*)
- I. Uncheck: **Finest Detail** (see *FIGURE 3*)

Step 3 of 6: Epson Printer Driver Configuration

- 4) Still in the Epson SC-T3200/5200/7200 Printing Preferences window, click on the **Layout** tab and select **Mirror Image** (see *FIGURE 5*)

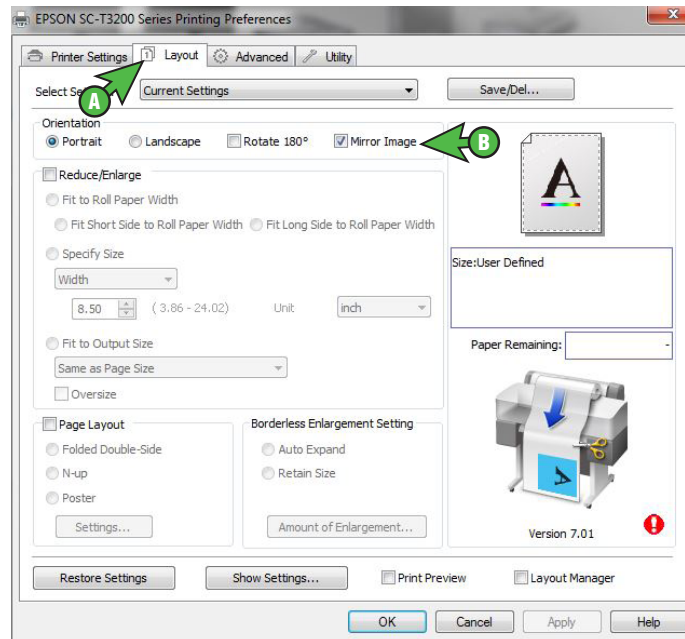


FIGURE 5

- 5) Next, click on the **Advanced** tab and confirm **Auto Rotate** is checked. Click **Save/Del...** to save the current settings (see *FIGURE 6*)

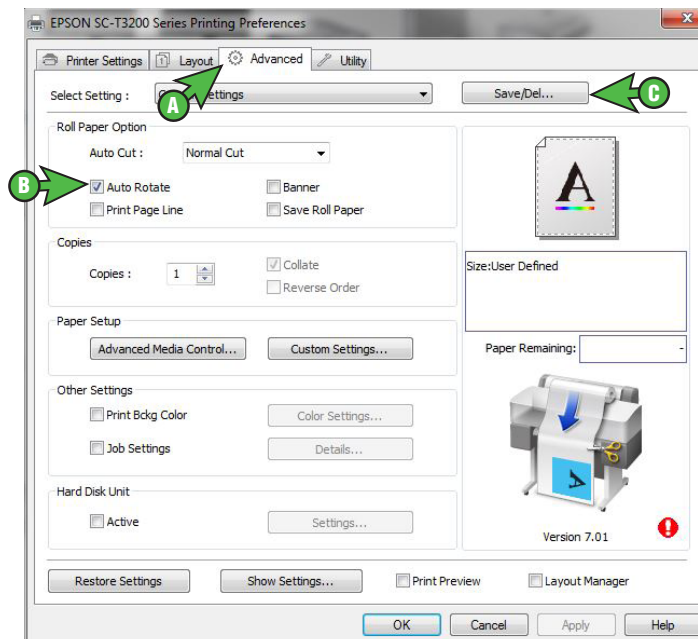


FIGURE 6

Step 3 of 6: Epson Printer Driver Configuration

- 6) In the Saves or Deletes Select Settings window which opens, name the settings **Sawgrass** and click **Save** (see *FIGURE 7*).

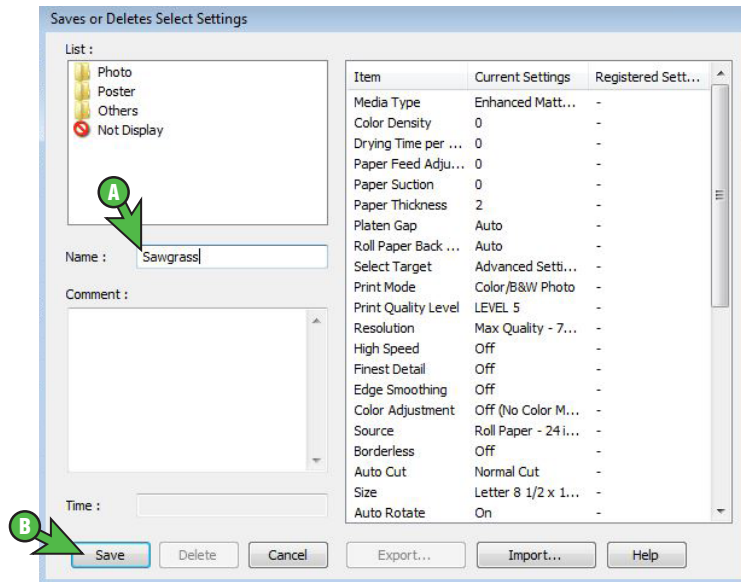


FIGURE 7

- 7) Back in the Printing Preferences window, click **OK** to complete the configuration (see *FIGURE 8*).

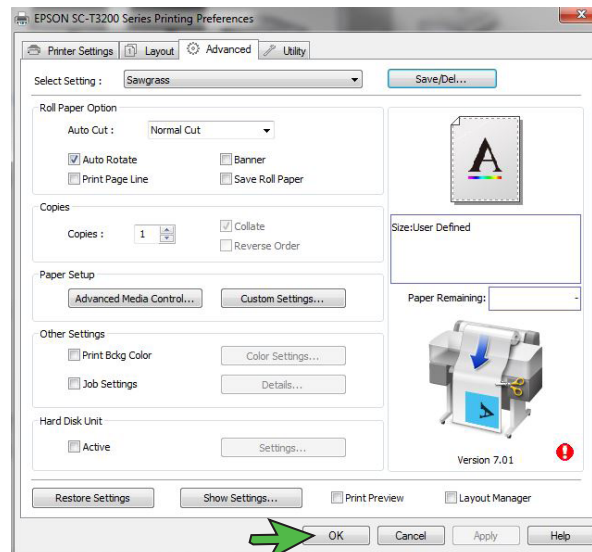


FIGURE 8

Installation and configuration of the Epson SC-T3270/5270/7270 Printer Driver is now complete. Proceed to **Step 4, SubliJet-E WinProfile Download, Installation and Registration**.

Installation and Configuration Guide - Windows 8

Step 4 of 6: SubliJet-E WinProfile Download, Installation and Registration

The following instructions explain how to download, install and register the SubliJet-E WinProfile. These instructions feature Windows 8 and Internet Explorer 11. Your experience may differ based on the operating system and internet browser being used.

- 1) Again, from the appropriate Installation and Configuration webpage for your setup, click on the link in Step 4, Install the **Sawgrass profile** (see *FIGURE 1*).

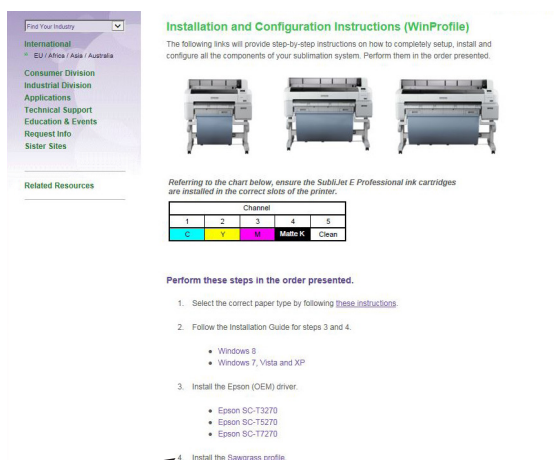
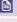


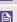



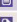




FIGURE 1

- 2) On the webpage that appears, click the link for the **WinProfile** in the Epson SC-T3270/5270/7270 section (see *FIGURE 2*).

For best results, be sure to double check that your system conforms with our [Recommended System Requirements](#).

Product	Installation Instructions	Version	XP (32b) ¹	Vista (32/64-bit) ¹	Win 7 (32/64-bit) ¹	Win 8/8.1 (32/64-bit) ¹	MAC OS ²
Epson SC-T3270/5270/7270							
WinProfile		v1.1.0	✓	✓	✓	✓	—
MacProfile		v1.0.0	—	—	—	—	✓
Epson SC-T3000/5000/7000							
PowerDriver (3000 only)		v3.6.8	✓	✓	✓	✓	—
WinProfile		v1.0.0	✓	✓	✓	✓	—
MacProfile		v1.0.0	—	—	—	—	✓
Epson Stylus Pro 7700/9700							
PowerDriver (7700 only)		v3.3.5	✓	✓	✓	—	—
WinProfile		v3.0.2	✓	✓	✓	✓	—
MacProfile		v3.0.0	—	—	—	—	✓
Epson Stylus Pro 7890/9890							
WinProfile		v3.0.2	✓	✓	✓	✓	—
MacProfile		v3.0.0	—	—	—	—	✓

Note: ¹Only Windows Professional, Business, Enterprise and Ultimate Editions have been tested and approved. ²Only

FIGURE 2

Note: At anytime during the download and installation process, your firewall or virus protection software may present warnings. Make the appropriate selections necessary to continue.

SubliJet-E: Epson SC-T3270/5270/7270 – Installation and Configuration Guide

Step 4 of 6: SubliJet-E WinProfile Download, Installation and Registration

- 3) The following window will appear asking if you want to Run, Save or Cancel. Click **Save** (see *FIGURE 3*).

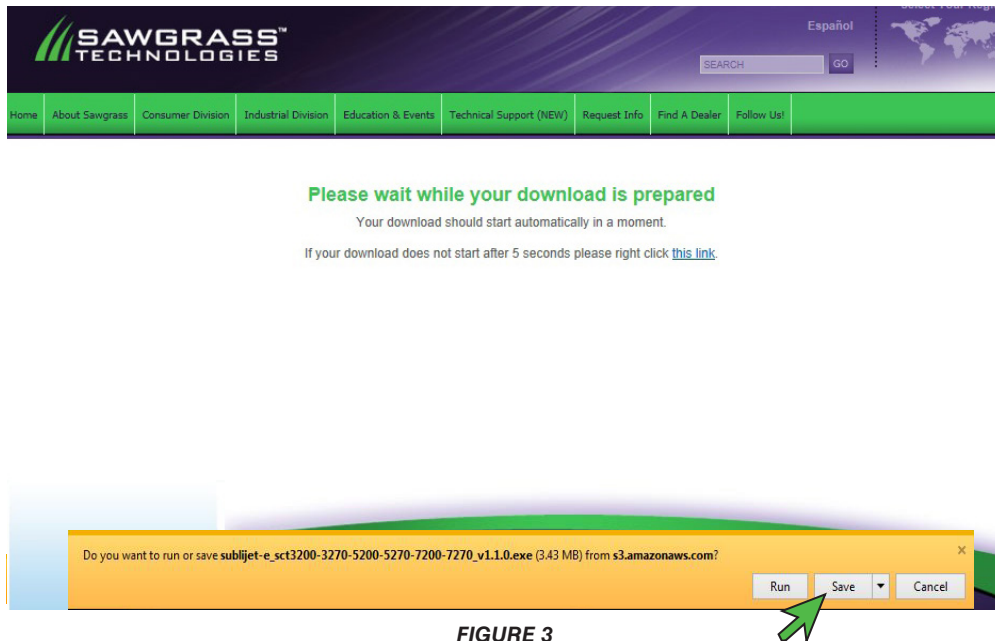


FIGURE 3

- 4) The file will begin downloading into the Downloads folder on your computer. When complete, the download message at the bottom of the screen will give you the option to **Run**, **Open** or **View downloads**. Click **Run** (see *FIGURE 4*).

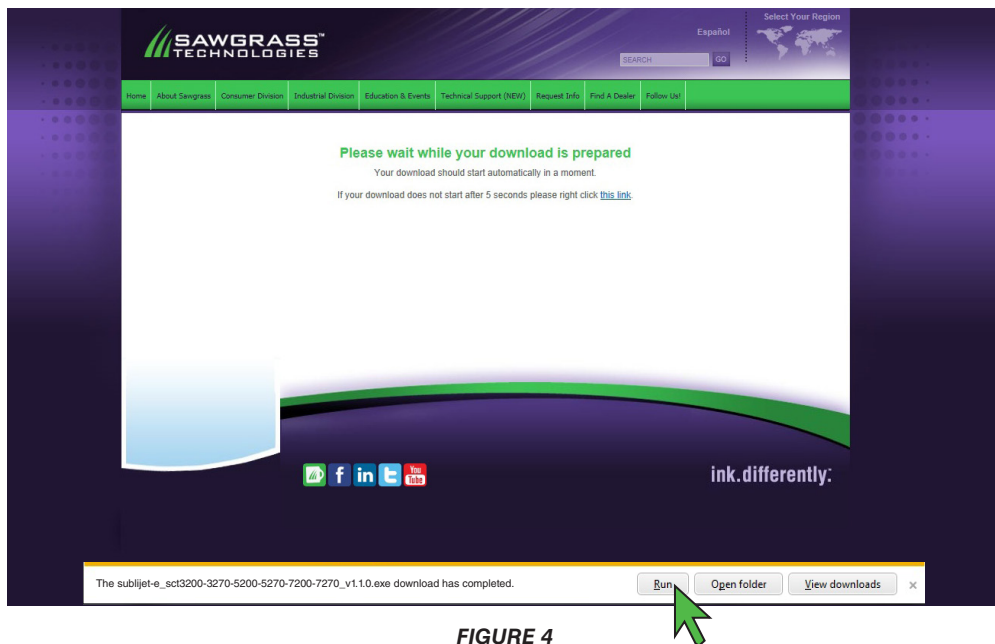


FIGURE 4

SubliJet-E: Epson SC-T3270/5270/7270 – Installation and Configuration Guide

Step 4 of 6: SubliJet-E WinProfile Download, Installation and Registration

- 5) Verify that the WinProfile is for the correct printer. If so, click **Next** (see *FIGURE 5*).

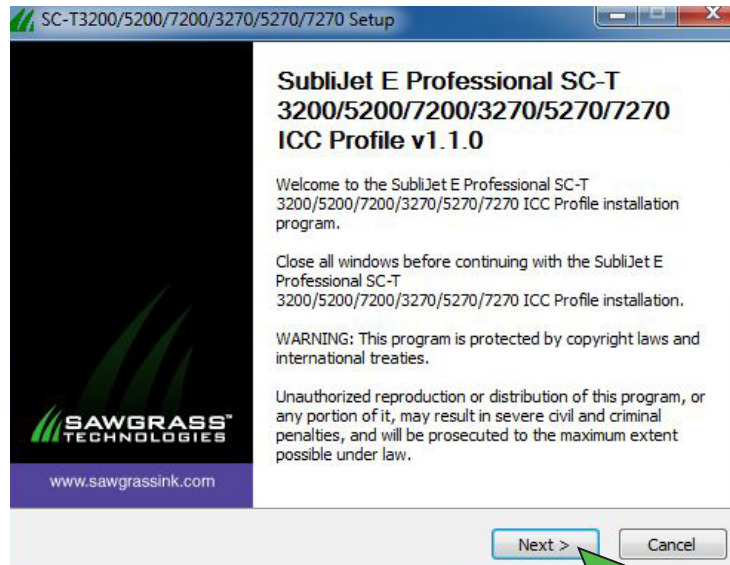


FIGURE 5

- 6) If you agree with the terms of the License Agreement, click **I Agree** (see *FIGURE 6*).

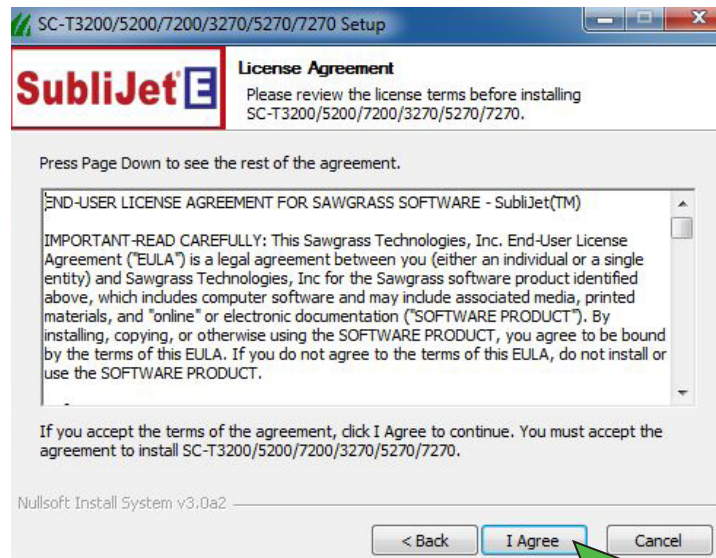


FIGURE 6

SubliJet-E: Epson SC-T3270/5270/7270 – Installation and Configuration Guide

Step 4 of 6: SubliJet-E WinProfile Download, Installation and Registration

- 7) Click **Install** to allow the WinProfile to be installed into the correct destination folder (see *FIGURE 7*).

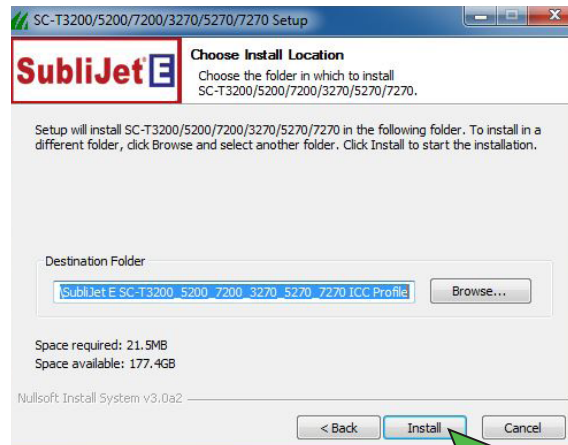


FIGURE 7

- 8) Click **Yes** when prompted to **Register the WinProfile**. A separate Profile Registration window will appear (see *FIGURE 8*).

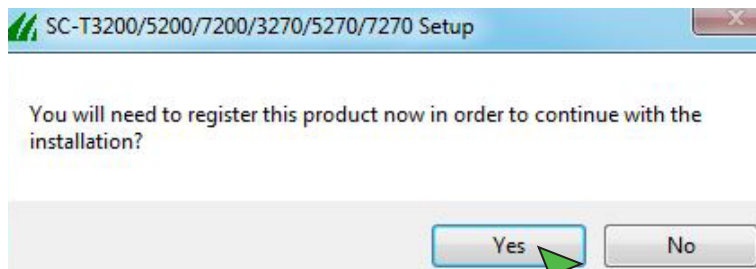


FIGURE 8

SubliJet-E: Epson SC-T3270/5270/7270 – Installation and Configuration Guide

Step 4 of 6: SubliJet-E WinProfile Download, Installation and Registration

- 9) Take note of the Product ID number, it will be needed to register your software. Click the **Obtain Registration Code** button (see *FIGURE 9*).

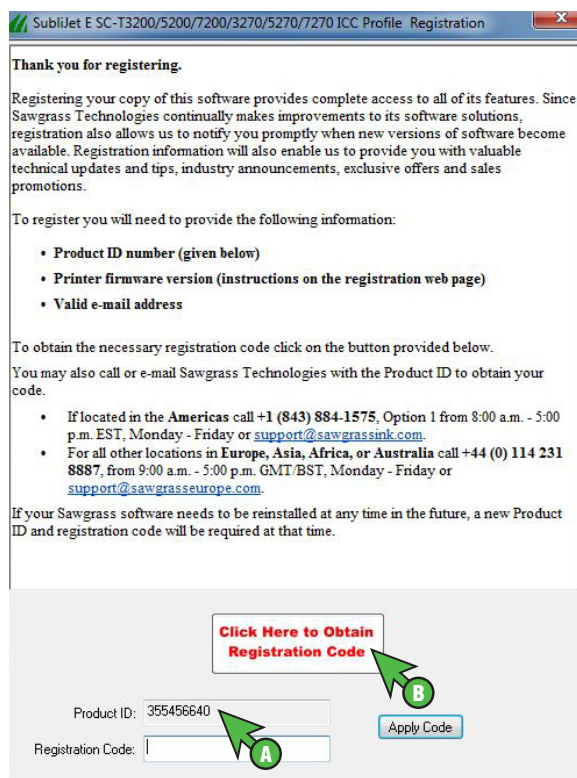


FIGURE 9

- 10) On the Product Registration web page that automatically opens, fill in the required information and click **Submit** when complete. A registration code will be sent to the email address entered on that form (see *FIGURE 10*).

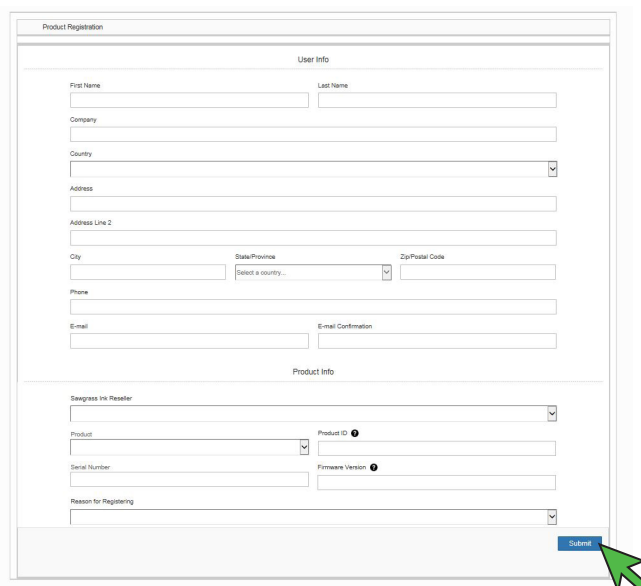


FIGURE 10

SubliJet-E: Epson SC-T3270/5270/7270 – Installation and Configuration Guide

Step 4 of 6: SubliJet-E WinProfile Download, Installation and Registration

- 11) When the email with the **Registration Code** is received, enter it into the Registration Code text box and click **Apply Code** (see *FIGURE 11*).

Thank you for registering.

Registering your copy of this software provides complete access to all of its features. Since Sawgrass Technologies continually makes improvements to its software solutions, registration also allows us to notify you promptly when new versions of software become available. Registration information will also enable us to provide you with valuable technical updates and tips, industry announcements, exclusive offers and sales promotions.

To register you will need to provide the following information:

- Product ID number (given below)
- Printer firmware version (instructions on the registration web page)
- Valid e-mail address

To obtain the necessary registration code click on the button provided below.

You may also call or e-mail Sawgrass Technologies with the Product ID to obtain your code.

- If located in the Americas call +1 (843) 884-1575, Option 1 from 8:00 a.m. - 5:00 p.m. EST, Monday - Friday or support@sawgrassink.com.
- For all other locations in Europe, Asia, Africa, or Australia call +44 (0) 114 231 8887, from 9:00 a.m. - 5:00 p.m. GMT/BST, Monday - Friday or support@sawgrasseurope.com.

If your Sawgrass software needs to be reinstalled at any time in the future, a new Product ID and registration code will be required at that time.

Click Here to Obtain Registration Code

Product ID: 355456640

Registration Code: 180096480

Apply Code

FIGURE 11

Note: If you have difficulties with registering online, note the Product ID described in step 9 above and call **843-884-1575, Option 1** or email support@sawgrassink.com. Registration codes via phone or email are provided 8:00 am – 5:00 pm EST, Monday – Friday. Also, separate registration codes are required for every machine on which the WinProfile is installed.

- 12) The message pictured below, confirming that registration was successful, will appear. Click **OK** to continue (see *FIGURE 12*).

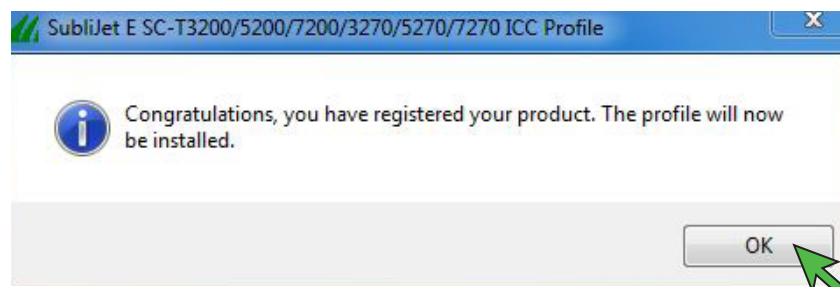


FIGURE 12

Step 4 of 6: SubliJet-E WinProfile Download, Installation and Registration

- 13) On the next screen informing you that the installation was completed successfully, click **Finish** (see *FIGURE 13*).

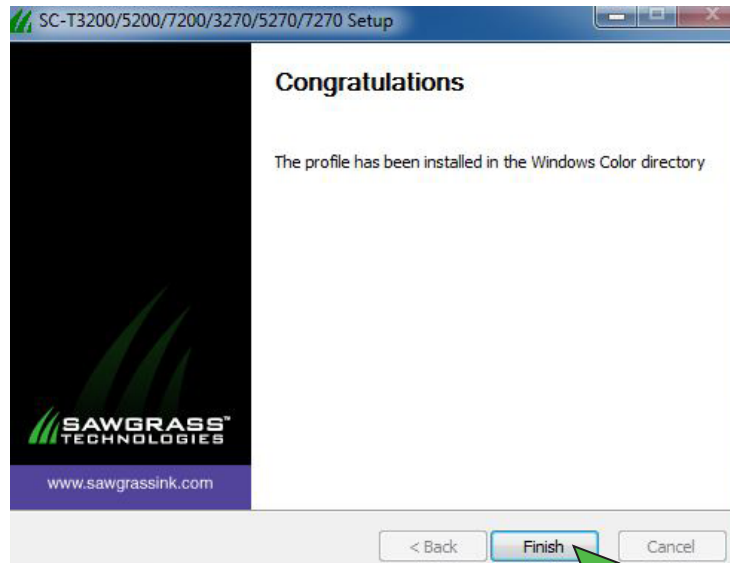


FIGURE 13

4 of the 6 steps of the installation and configuration process are now complete. It is very important to complete the last 2 steps beginning with Step 5, **Configure your design software** on the [Installation and Configuration](#) webpage.

For the absolute latest information and updates on all products, materials, processes and/or procedures relative to all offerings by or through Sawgrass Technologies, Inc., refer to our website:
www.sawgrassink.com