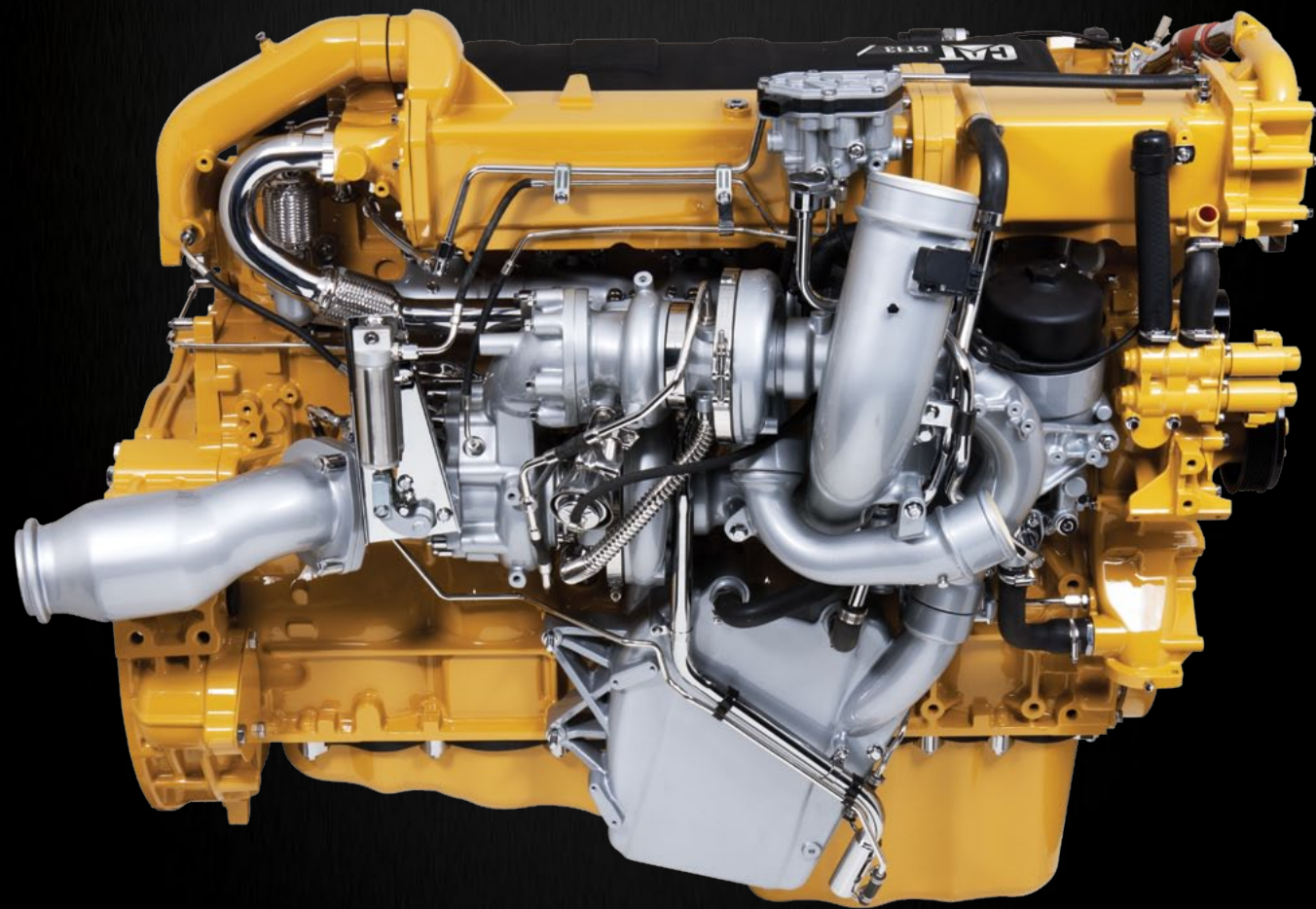


POWER FOR THE WORK YOU DO.

**CAT® CT SERIES VOCATIONAL
TRUCK ENGINES**





HEAVY-DUTY, REDEFINED.

TO GET YOUR TOUGHEST JOBS DONE, you need an engine that works even harder than you do. That's why Caterpillar is offering the new CT Series of engines in its vocational trucks to deliver every ounce of power, performance and productivity you need. They're redefining heavy-duty, with all the high-performance characteristics and rugged durability you expect from Cat® Engines.

Plus, our Vocational Truck Engines are backed by the unmatched support of the North American Cat Dealer Network, across the United States and Canada. So you're assured of superior engine quality and long-term value to help your business succeed.

THE ULTIMATE POWER MATCH.

CAT VOCATIONAL ENGINES are built with ratings specifically created for vocational truck applications. They're designed to deliver the ultimate horsepower/torque combinations to tackle the toughest jobs and harshest work environments.

You can spec your truck's engine to create an ideal match of power and performance that meets the demands of your specific job and operating conditions. So whether your next Cat vocational truck is a dump truck, concrete mixer, waste carrier or heavy hauler, it will be equipped with the right horsepower and torque to match the demands of your work.

A FULL LINE OF WORK ENGINES.

The line-up of Cat Vocational Engines includes the CT11, CT13 and CT15. The CT11 and CT13 are available now. When the CT15 joins the line in 2012, it will offer ratings from 435 bhp to 550 bhp with 1850 lb/ft Peak Torque to offer an even bigger power boost.

CAT CT11 ENGINE PERFORMANCE DATA

HORSEPOWER (BHP @ 1700 RPM)	TORQUE PEAK (LB-FT @ 1000 RPM)	GOV. SPEED (RPM)	CLUTCH-ENGAGEMENT TORQUE (LB-FT @ 800 RPM)
330	1250	2100	686
365	1250	2100	686
370	1350	2100	770
390	1450	2100	811

CAT CT13 ENGINE PERFORMANCE DATA

HORSEPOWER (BHP @ 1700 RPM)	TORQUE PEAK (LB-FT @ 1000 RPM)	GOV. SPEED (RPM)	CLUTCH-ENGAGEMENT TORQUE (LB-FT @ 800 RPM)
410	1450	2100	828
430	1550	2100	868
475	1700	2100	959

ENGINEERED FOR THE TOUGHEST JOBS.

THE CT SERIES TRUCK ENGINES are engineered to deliver peak power and performance to handle the biggest, toughest jobs you do. They are built for unprecedented reliability, durability and years of service life to help lower your operating costs.

- » **COMPACTED GRAPHITE IRON (CGI) BLOCK** is stronger than standard iron, yet it saves weight—up to 500 pounds—so you can maximize payload
- » **HIGH-PRESSURE, COMMON-RAIL FUEL SYSTEM** delivers ideal injection pressures for precise injection timing, optimized combustion and reduced exhaust emissions. With operating pressure up to 32,000 PSI, it is fuel efficient—and delivers quieter operation for increased driver comfort.
- » **30 PERCENT LESS INTERIOR NOISE** and much lower vibration reduce driver fatigue and enhance productivity
- » **ADVANCED AIR MANAGEMENT SYSTEM** achieves peak torque at 1200 rpm and holds steady to 1000 rpm to reduce gear-shifting and allows for fewer downshifts up steep grades
- » **SEPARATED GEAR TRAIN** provides smooth meshing of gears for longer life and reduced noise

- » **DUAL SEQUENTIAL TURBOCHARGERS** and high-pressure injection system deliver optimum torque for operating conditions, from faster acceleration to handling steep grades
- » **REAR POWER TAKE-OFF** offers full time live power to meet the demands of multiple vocational applications
- » **VALVE TRAIN** with low friction design increases durability and service life
- » **MAIN BEARINGS** have a large surface area for added strength and durability
- » **WET SLEEVE** design provides optimal cylinder cooling efficiency
- » **CYLINDER BLOCK COOLING SYSTEM** is designed with two separate circuits to optimize coolant flow and manage coolant temperature independently within the cylinder block and cylinder head to create the ideal engine operating temperature in all conditions

- » **DRY DECK SURFACE** at Head/Block joint eliminates the transfer of fluids between the two major components contributing to higher reliability
- » **WIRING HARNESS** is foam-molded to secure connections for enhanced reliability
- » **KEY SYSTEMS AND COMPONENTS** of the engine, from the valve cover to the oil and fuel filters, are easy to access. So maintenance is more convenient, which helps minimize downtime.
- » **SINGLE ELECTRONIC CONTROL MODULE (ECM)** and fewer electrical connections result in less diagnostic and maintenance time
- » **OPTIONAL COMPRESSION BRAKE** is available to fit your specific application



EMISSIONS TECHNOLOGY HARD AT WORK.

All Cat Vocational Engines incorporate an advanced EGR system that features the latest in fuel injection technology, air management systems, piston combustion bowl design and electronic controls.

» COMMON RAIL FUEL INJECTION TECHNOLOGY

System technology automatically injects fuel into the cylinder several times per cycle under high pressure. This extends the injection cycle, making combustion more complete, which reduces NOx emissions and improves fuel efficiency.

» PISTON COMBUSTION BOWL DESIGN

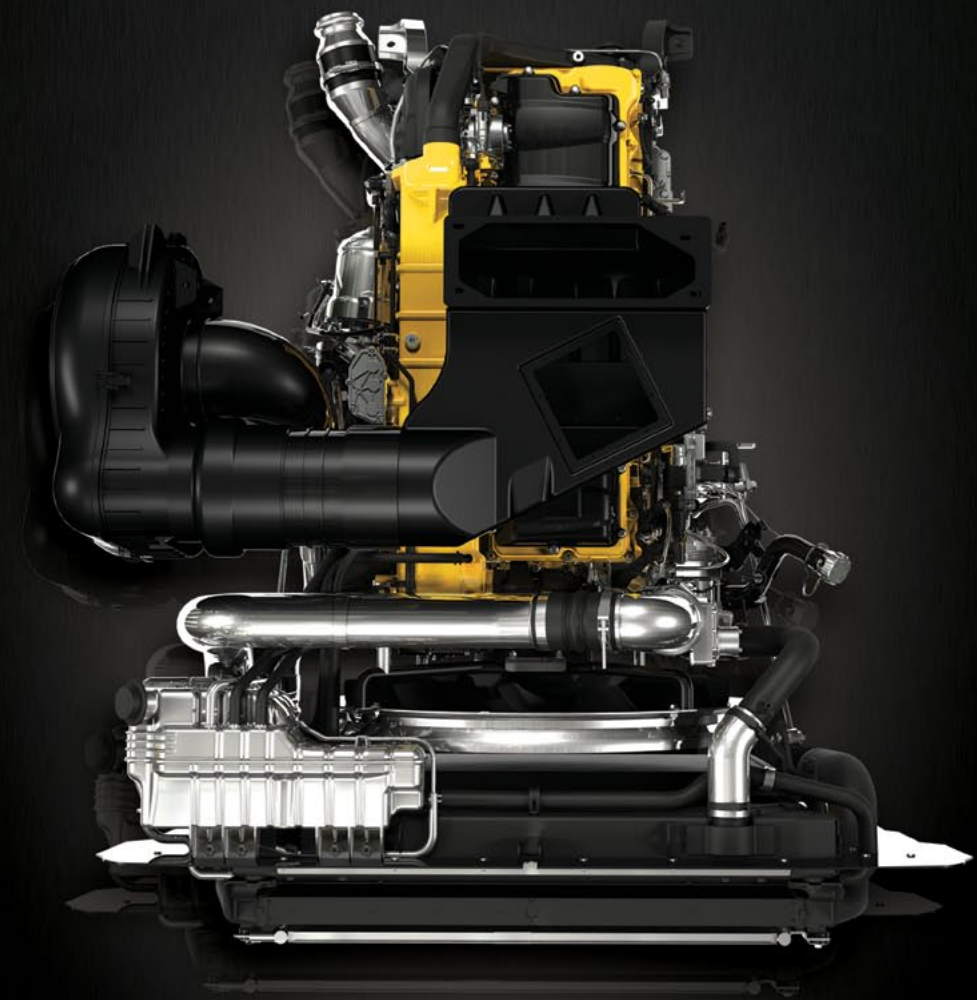
The unique design maximizes fuel swirl inside the cylinder for a more complete burn.

» AIR MANAGEMENT SYSTEM

The piston combustion bowl design and high injection pressure work in tandem to atomize fuel, so it enters the cylinder more evenly. This results in a cleaner, more complete burn that delivers added power to your truck's wheels, while reducing exhaust soot.

» ELECTRONIC CONTROLS

The computing power of the engine controller constantly determines the optimum fuel-air mix the engine requires as operating conditions change, resulting in maximized engine power and efficiency.



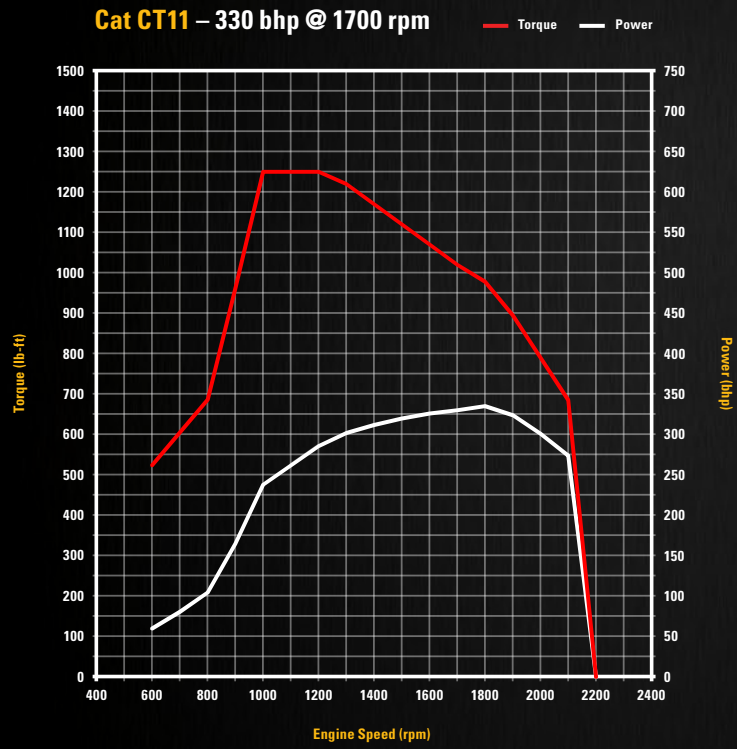
CAT VOCATIONAL TRUCK ENGINES

- Unique engine ratings created specifically for vocational applications, resulting in the ultimate horsepower/torque combinations
- Advanced EGR Emissions Control system
- High-pressure common-rail fuel system with injection pressures of 32,000 psi (approximately 2,200 bar)
- Compact graphite iron block
- Twin-series turbochargers with interstage cooler

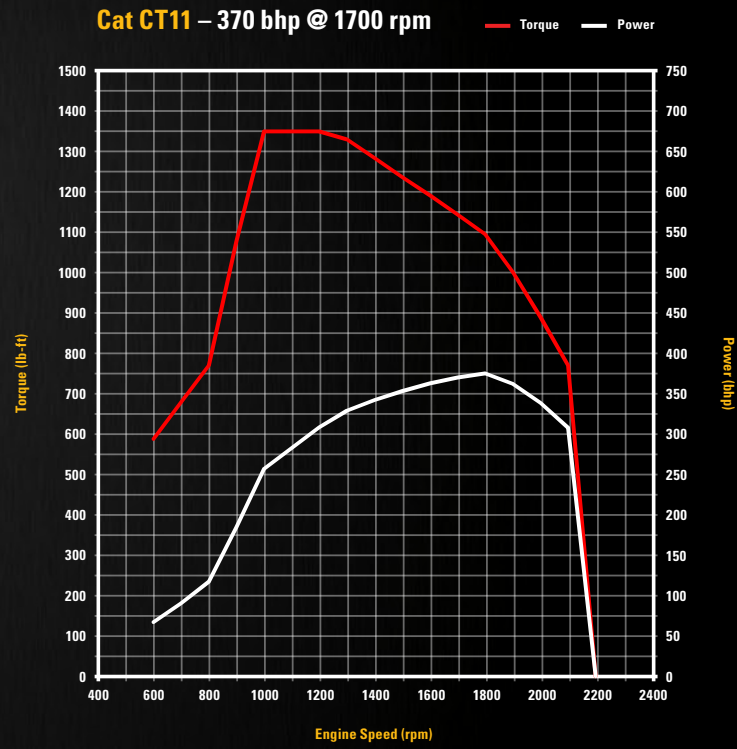
	CAT CT11	CAT CT13
ENGINE TYPE	Diesel, 4-Cycle	Diesel, 4-Cycle
CONFIGURATION	Inline 6-Cylinder	Inline 6-Cylinder
DISPLACEMENT	10.5 L (641 cu. in.)	12.4 L (758 cu. in.)
BORE AND STROKE	4.72 in. & 6.10 in. (12 cm & 15.5 cm)	4.96 in. & 6.54 in. (12.6 cm & 16.6 cm)
COMPRESSION RATIO	16.5:1	17:1
ASPIRATION	Dual Series Turbochargers, Intercooler and Aftercooler	Dual Series Turbochargers, Intercooler and Aftercooler
COMBUSTION SYSTEM	Direct Injection	Direct Injection
LUBRICATING SYSTEM CAPACITY	42 Quarts (40 L)	42 Quarts (40 L)
OIL DRAIN INTERVAL	25,000 miles (40,234 km)	25,000 (40,234 km)
FUEL FILTER SERVICE	25,000 (40,234 km)	25,000 (40,234 km)
COOLANT DRAIN INTERVAL	600,000 miles (965,606 km)	600,000 miles (965,606 km)
TOTAL ENGINE WEIGHT (DRY)	2400 lbs. (1089 kg)	2400 lbs. (1089 kg)
DIMENSIONS	L 59 in. x W 37 in. x H 49 in. (L 150 cm x W 94 cm x H 125 cm)	L 59 in. x W 37 in. x H 49 in. (L 150 cm x W 94 cm x H 125 cm)
VALVES	4 Valves per Cylinder, Overhead Cam Actuated	4 Valves per Cylinder, Overhead Cam Actuated
HORSEPOWER	330-390 hp (246 - 291 kW) @ 2100 rpm	410-475 hp (306 - 354 kW) @ 2100 rpm
PEAK TORQUE	1250-1450 lb.-ft. (1693 - 1966 Nm) @ 1000 rpm	1450-1700 lb.-ft. (1964 - 2302 Nm) @ 1000 rpm

CT11 TORQUE/POWER CURVES

Cat CT11 – 330 bhp @ 1700 rpm

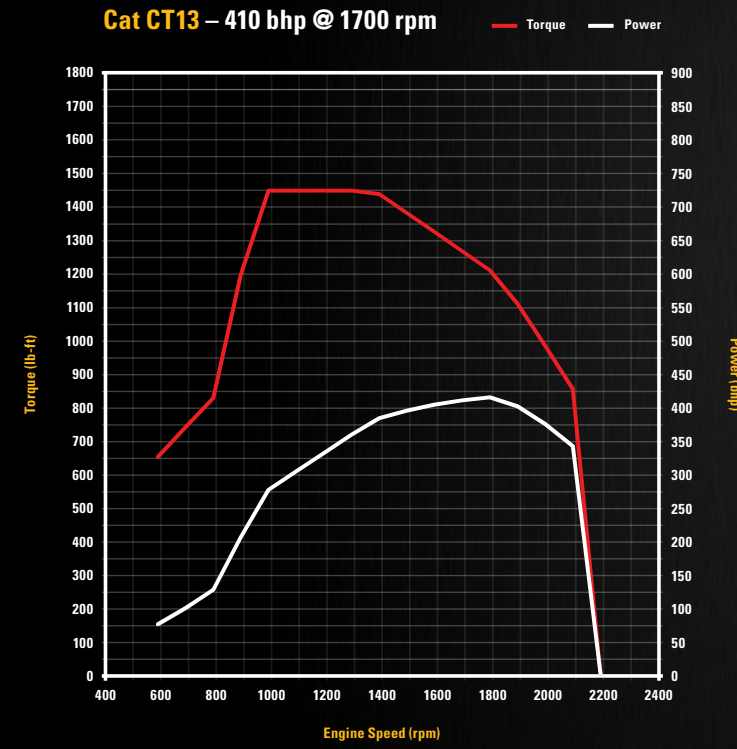


Cat CT11 – 370 bhp @ 1700 rpm

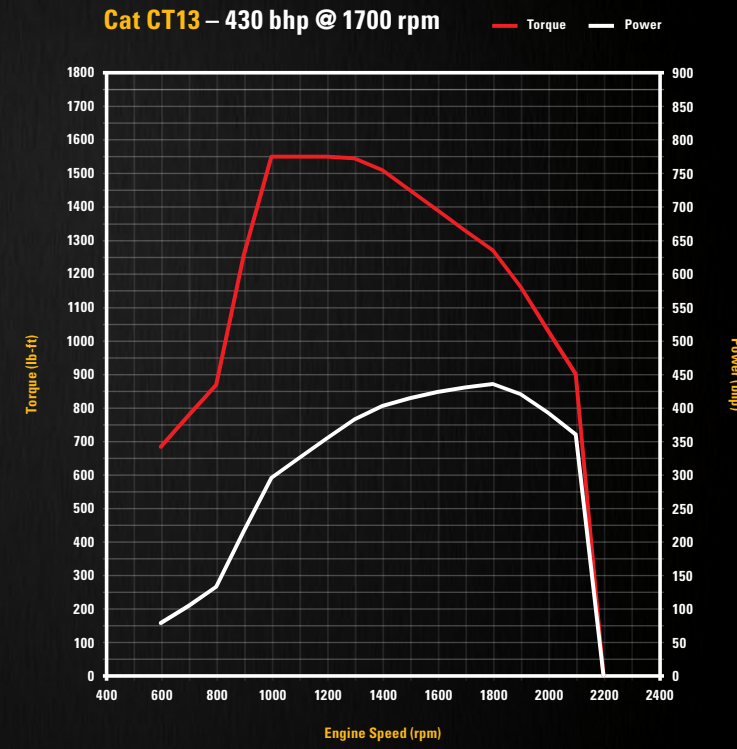


CT13 TORQUE/POWER CURVES

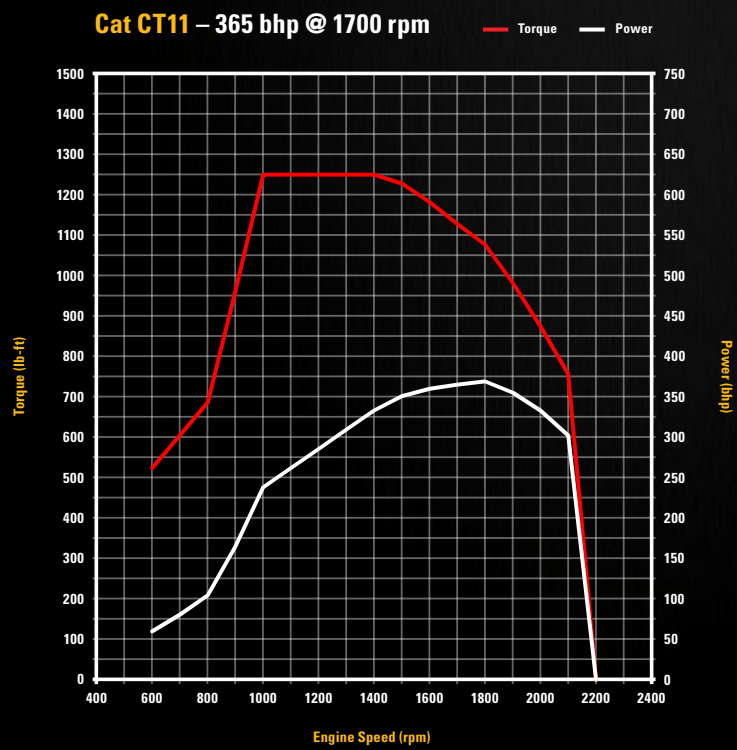
Cat CT13 – 410 bhp @ 1700 rpm



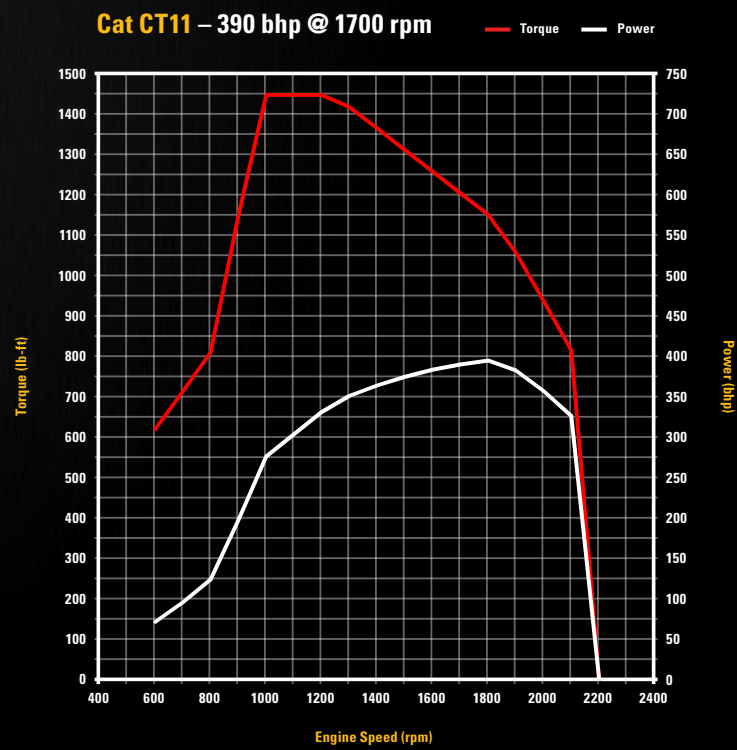
Cat CT13 – 430 bhp @ 1700 rpm



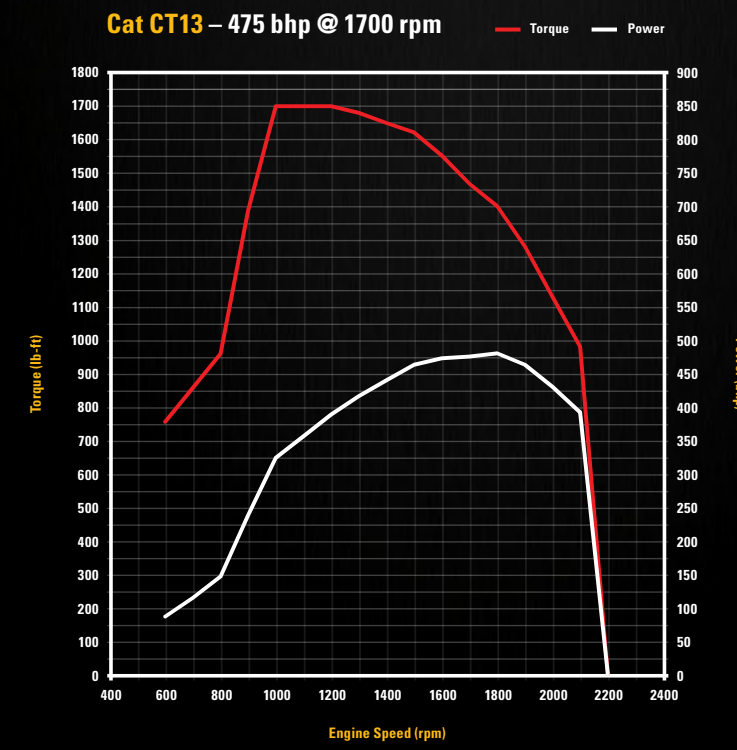
Cat CT11 – 365 bhp @ 1700 rpm



Cat CT11 – 390 bhp @ 1700 rpm



Cat CT13 – 475 bhp @ 1700 rpm





READY TO WORK FOR YOU.

CAT VOCATIONAL TRUCK ENGINES are backed exclusively by the unmatched support of the North American Cat Dealer Network, with more than 400 service locations and 2,300 service bays across the United States and Canada. Cat Dealers are ready to work for you by leveraging their more than 40 years of industry-leading service support experience with on-highway engines.

So you can count on your Cat Dealer for quality service, fast parts availability, unrivaled warranty coverage and more for your Cat Vocational Truck Engine.

- » **HIGHLY-TRAINED DEALER TECHNICIANS** are ready to quickly respond to all your engine repair needs, keeping you up and running to maximize your on-the-job productivity.
- » **24/7 ONLINE PARTS ORDERING**, combined with unmatched parts availability and timely delivery, mean you'll be up and running in no time.
- » **UNRIVALED WARRANTY AND EXTENDED SERVICE COVERAGE** for your Cat Vocational Engine delivers all the protection you need in one comprehensive package—with extended warranties and a variety of scheduled maintenance programs available.
- » **THE LARGEST NETWORK** of chassis dynamometers in North America ensures that your engine will deliver maximum performance throughout its life.

HERE TO WORK.

DESIGNED FOR UNPRECEDENTED UPTIME and low cost of ownership in dozens of applications, Cat Vocational Engines are backed by the best Dealer Network in the business.

These new engines deliver what no one else can—all the power, performance and durability you expect from a Cat Engine. They're heavy-duty redefined, and now they're here to work for you.

CAT

FOR MORE INFORMATION

VISIT DRIVECAT.COM OR TALK TO YOUR CAT DEALER TODAY TO LEARN MORE ABOUT THE LINE OF CAT CT SERIES VOCATIONAL TRUCK ENGINES.