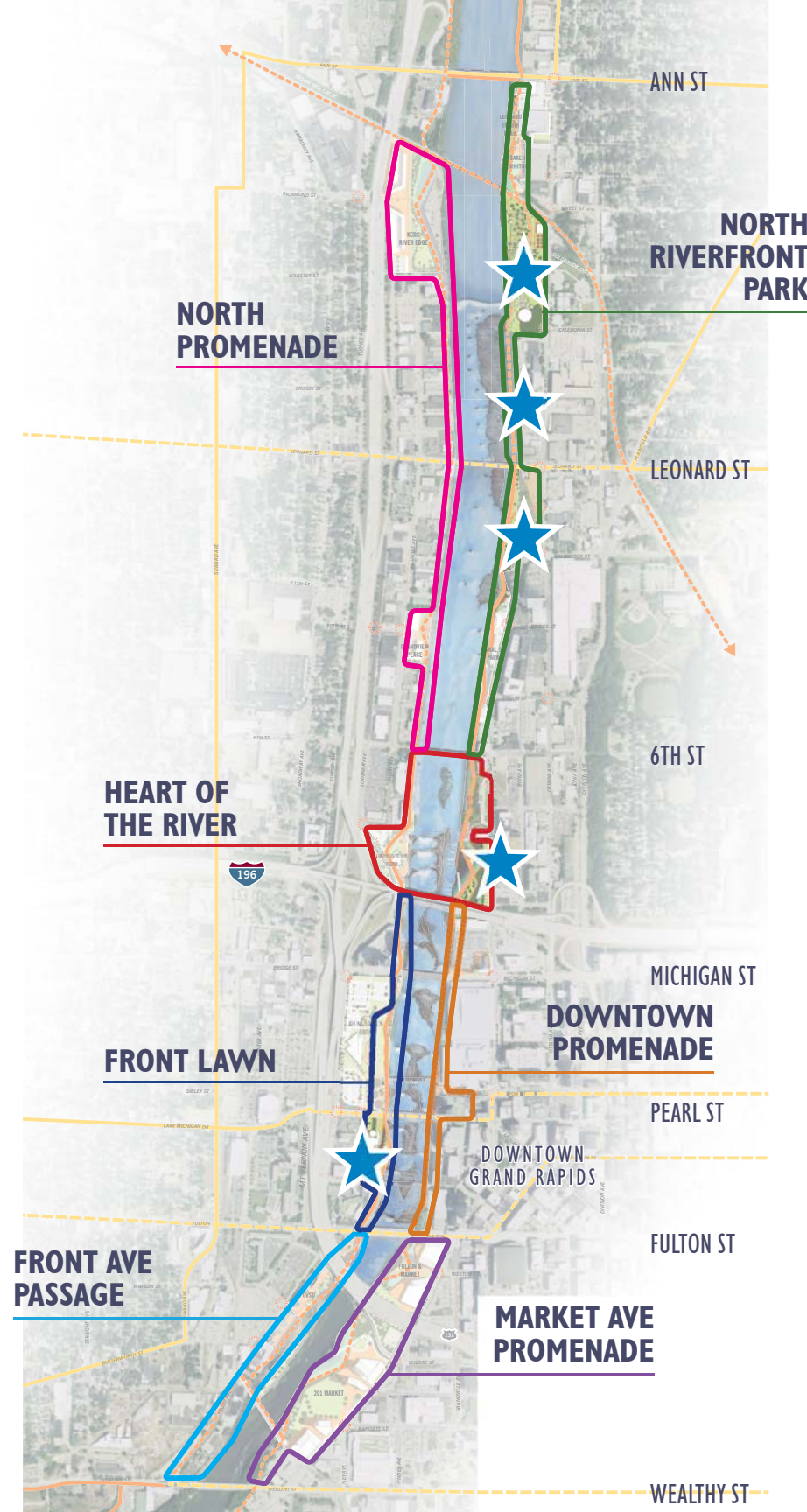




RIVER FOR ALL

# **DRAFT OPPORTUNITY SITES**



**North Riverfront Park**  
Leonard to Ann Trail  
Water Storage Yard Site  
Coldbrook Creek & Canal

**Heart of the River**  
North Monroe

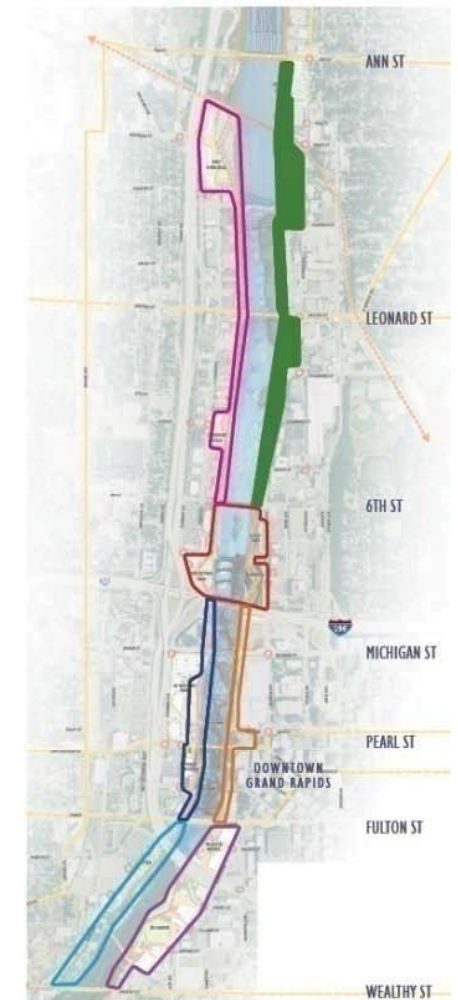
**Front Lawn**  
Grand Rapids Public Museum





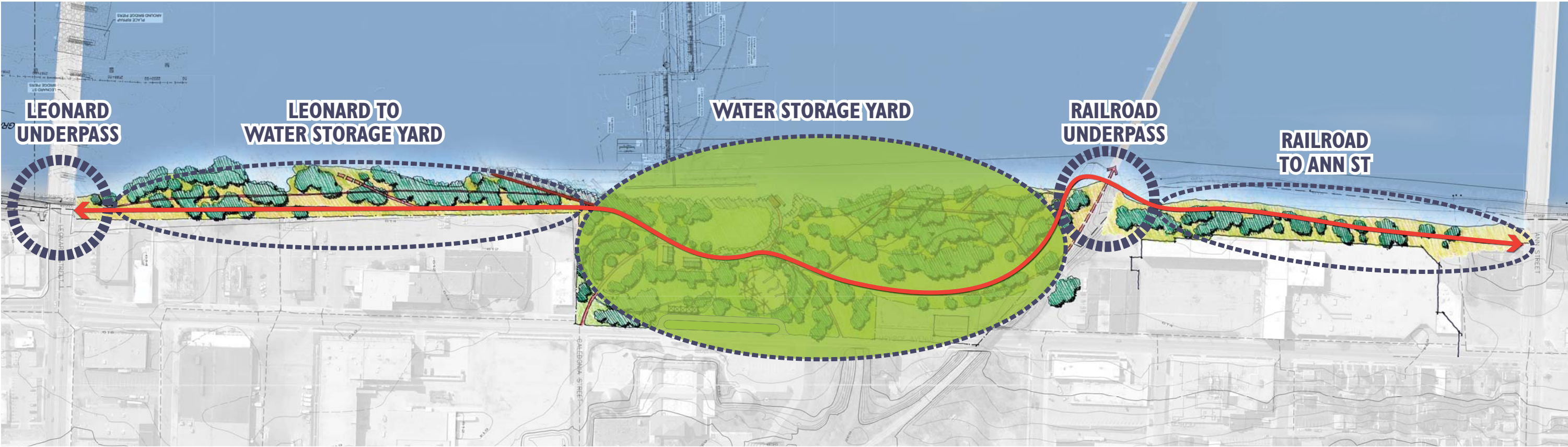
# North Riverfront Park

natural/river character  
adventure parks  
family picnics, gathering, leisure  
outdoor learning  
river recreation destination  
touch the water





# North Riverfront Park - Leonard to Ann Trail





# North Riverfront Park - Leonard to Ann Trail

## RAILROAD UNDERPASS

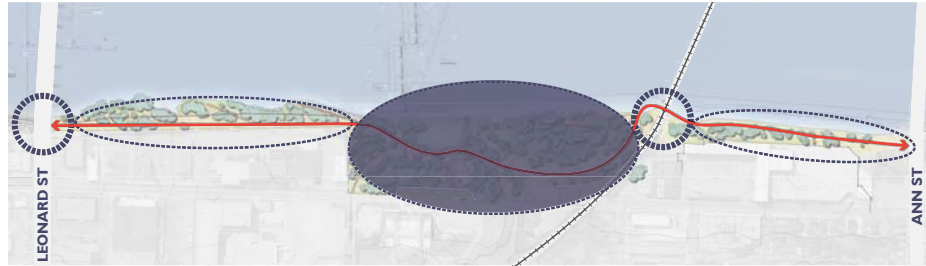


KEY MAP





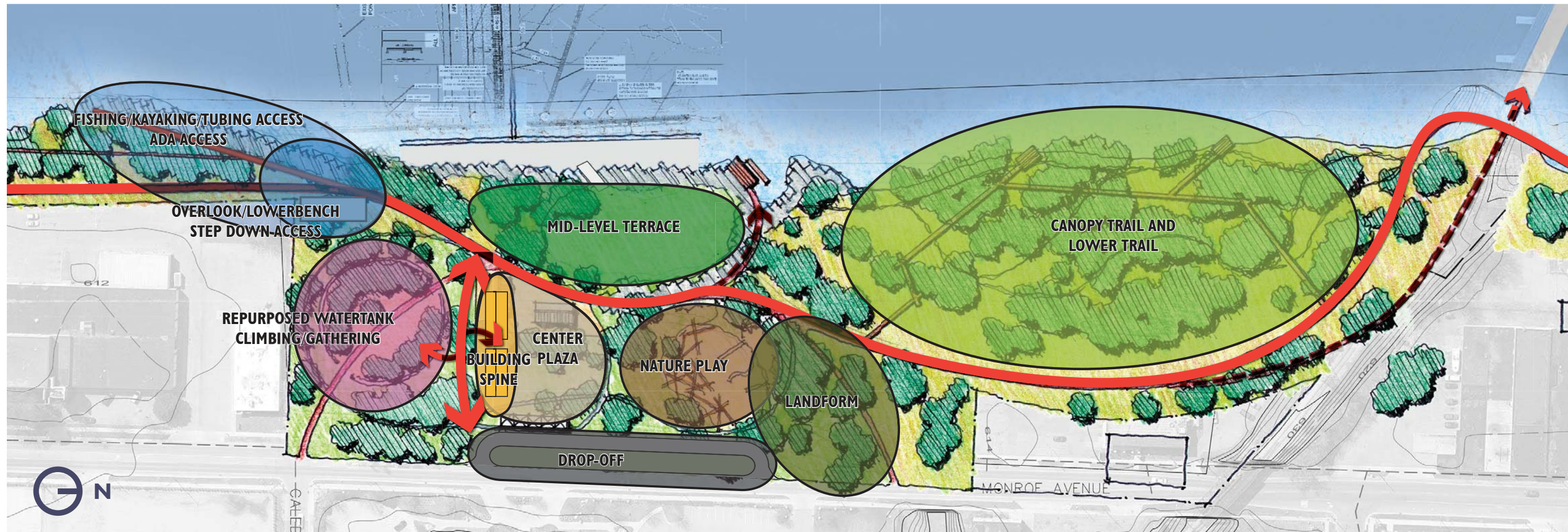
# North Riverfront Park - Water Storage Yard Site



KEY MAP

## Site Programming

- » Mid-level terrace
- » High use area downstream of barrier
- » Re-purposed water tank area
- » Building spine and center plaza
- » Drop off
- » Nature play integrated with landform
- » Canopy trail





# North Riverfront Park - Water Storage Yard Site

## CANOPY WALK





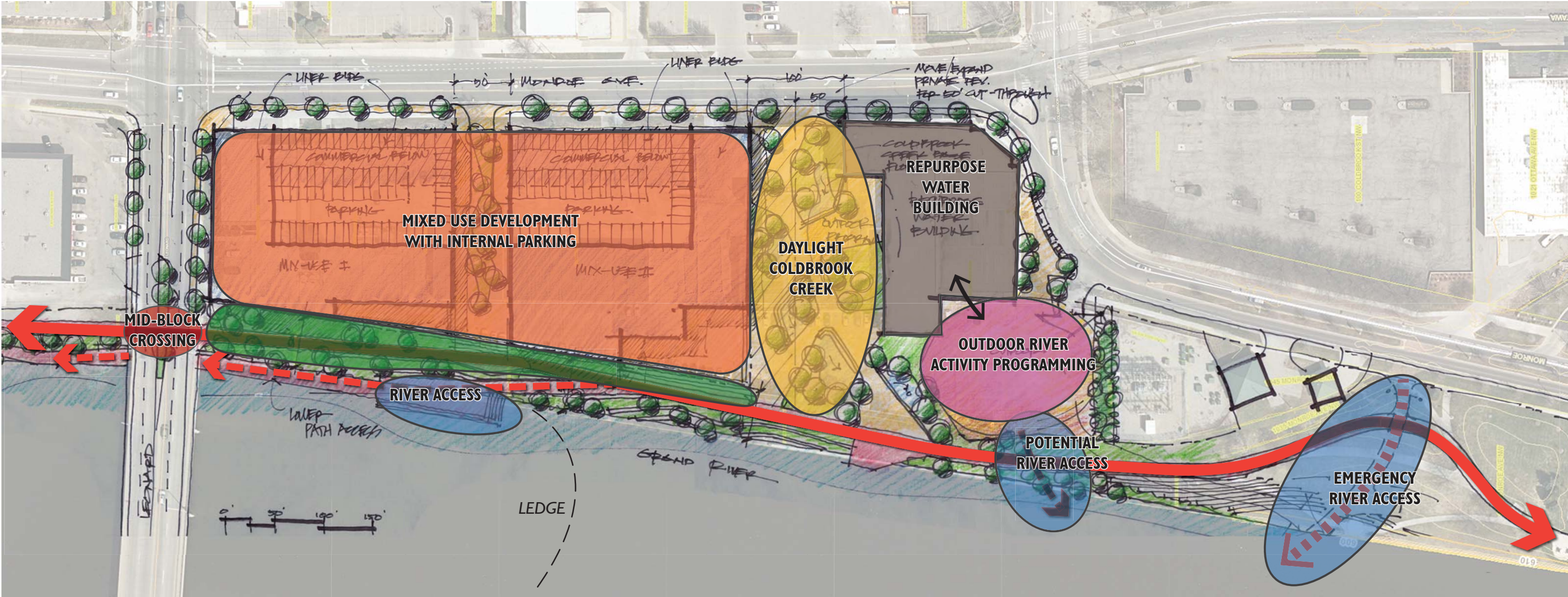
# North Riverfront Park - Water Storage Yard Site

## LOG JAM NATURE PLAY





# North Riverfront Park - Coldbrook





# North Riverfront Park - Coldbrook

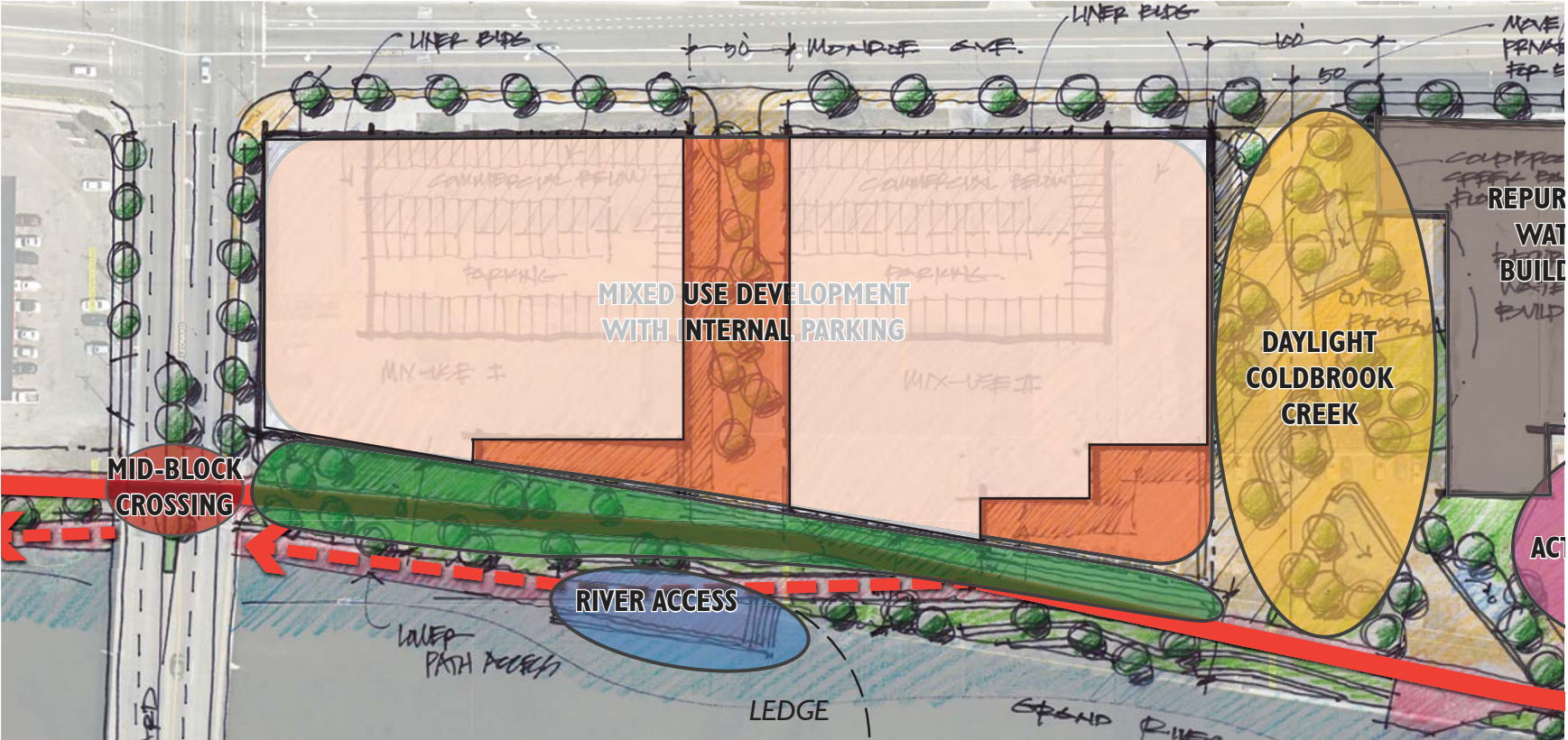
## BUILDING SCALE COMPARISON



38 COMMERCE



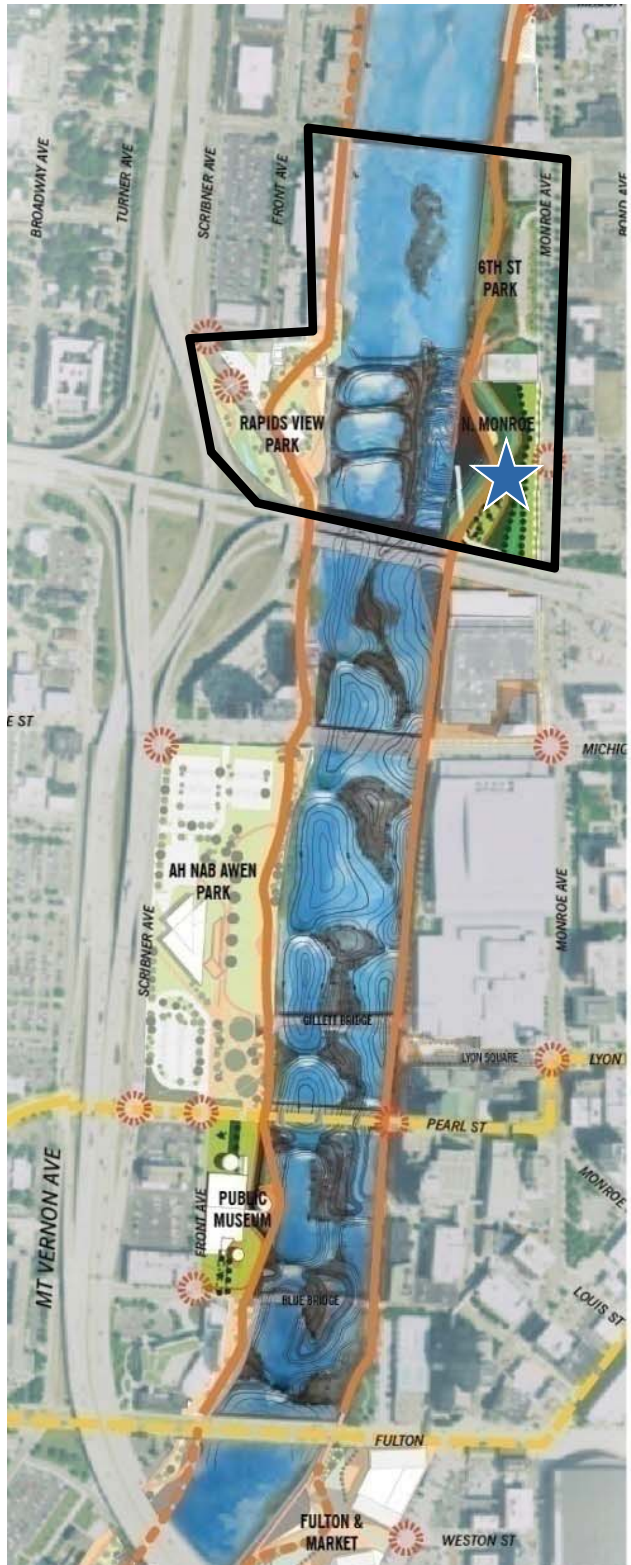
UICA BUILDING





# Heart of the River

balance of river + civic character  
river events  
festivals  
unique outdoor programming  
beach  
touch the water



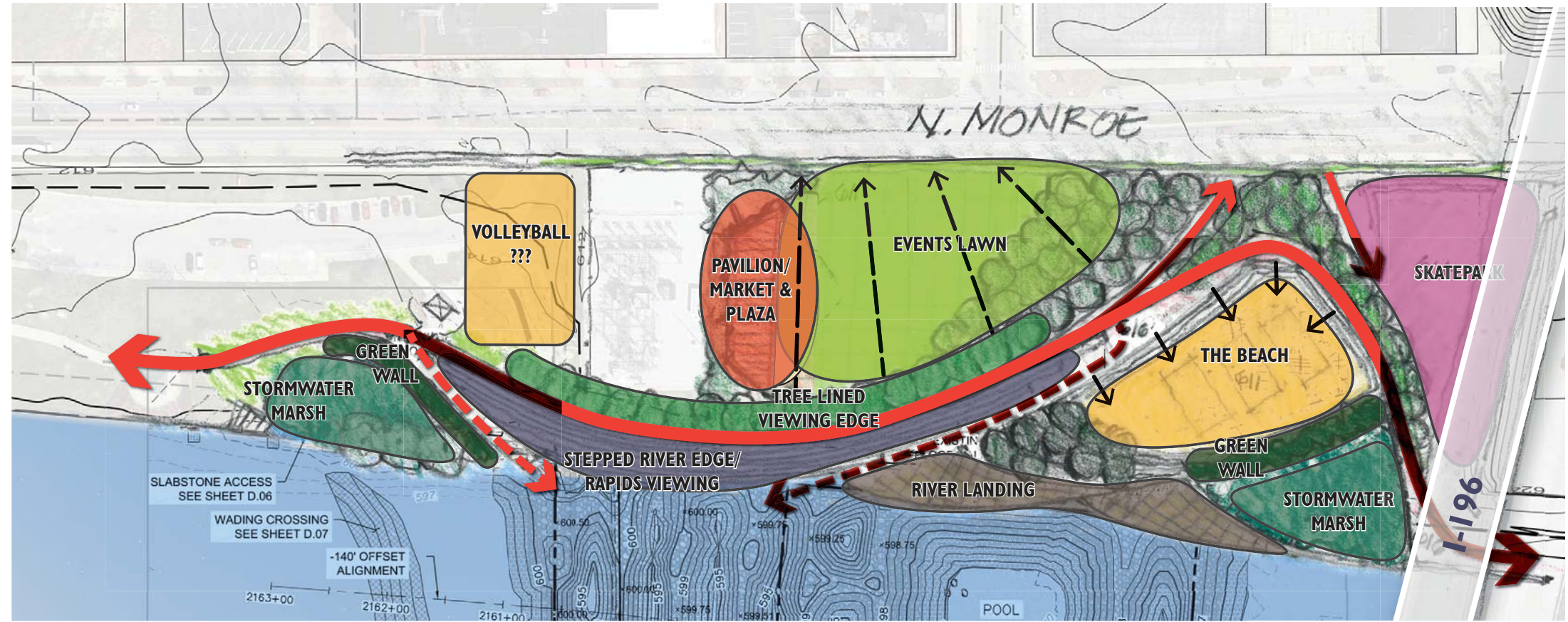


# Heart of the River - North Monroe

## Option #1

### » Site Programming

- Universal access to river
- Skate park
- 3 Sand volleyball courts
- Large multi-purpose plaza event space
- Beach
- Stormwater Marsh



Stormwater Marsh



Stepped River Edge / Rapids Viewing



River Landing



The Beach

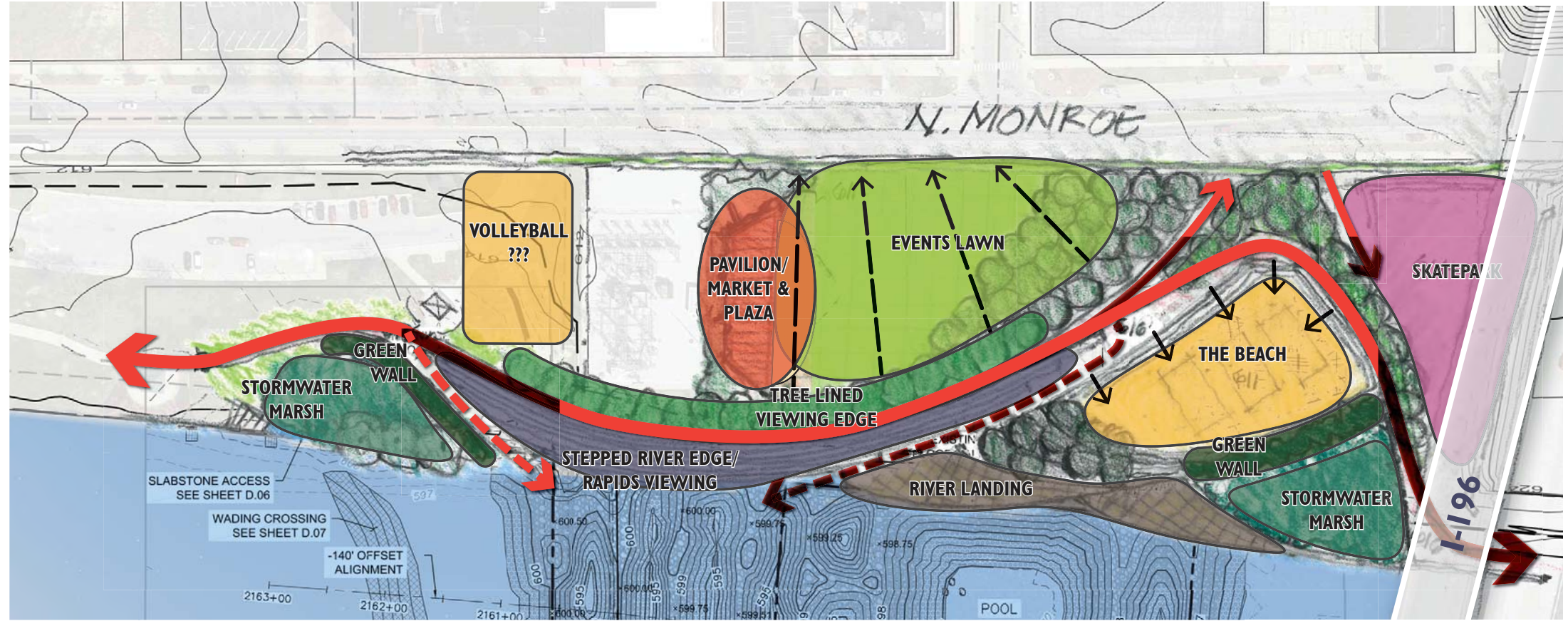


# Heart of the River - North Monroe

## Option # I

## » Site Programming

- Universal access to river
- Skate park
- 3 Sand volleyball courts
- Large multi-purpose plaza event space
- Beach
- Stormwater Marsh



## Viewing Edge



## Sand Volleyball



## Pavilion / Market & Plaza



## Skatepark

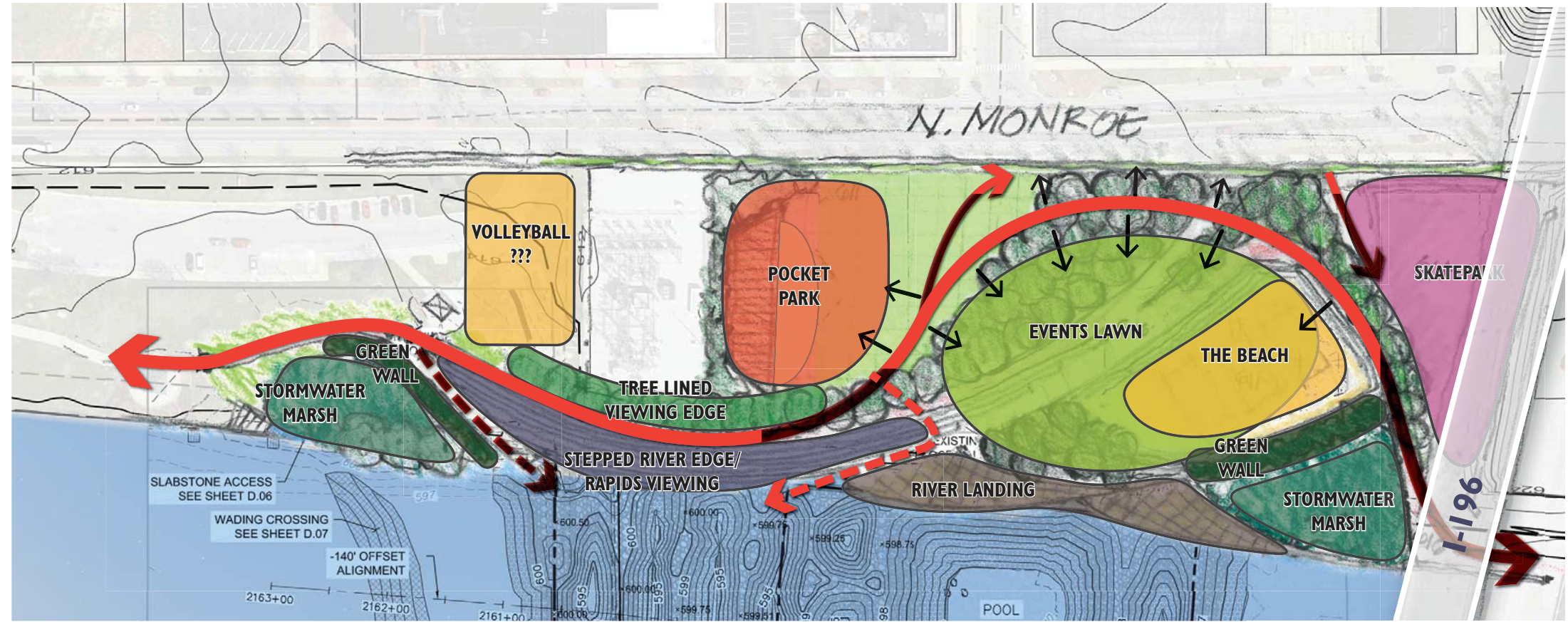


# Heart of the River - North Monroe

## Option #2

## » Site Programming

- Universal access to river
- Skate park
- 3 Sand volleyball courts
- Large multi-purpose plaza event space
- Beach
- Stormwater Marsh



## Pocket Park

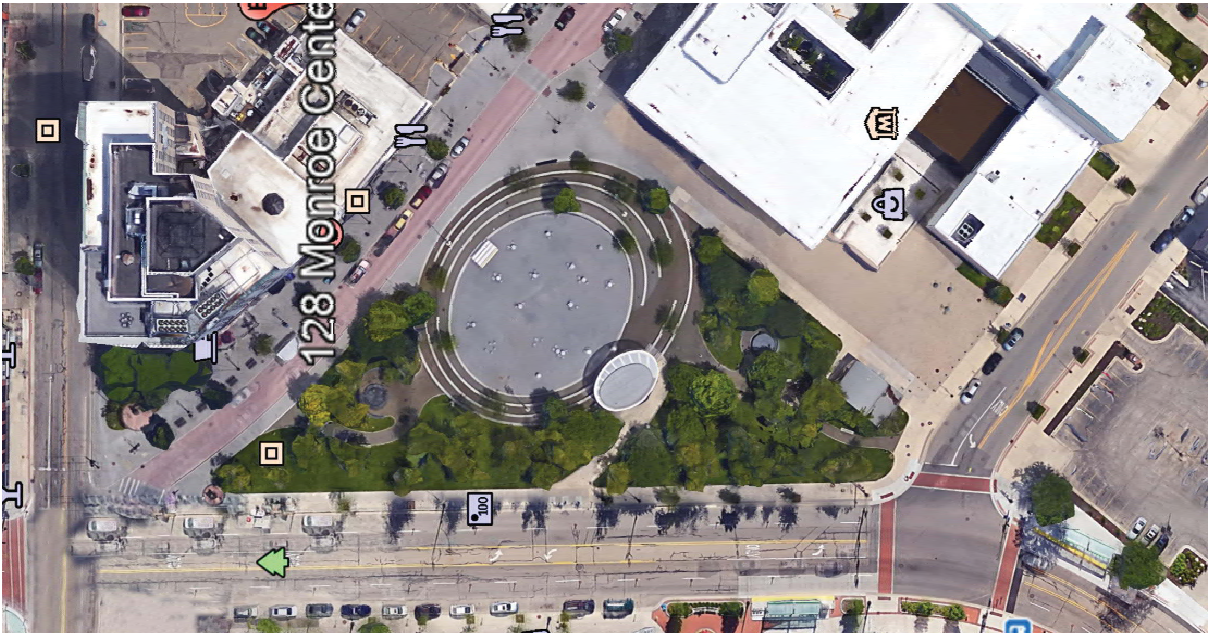
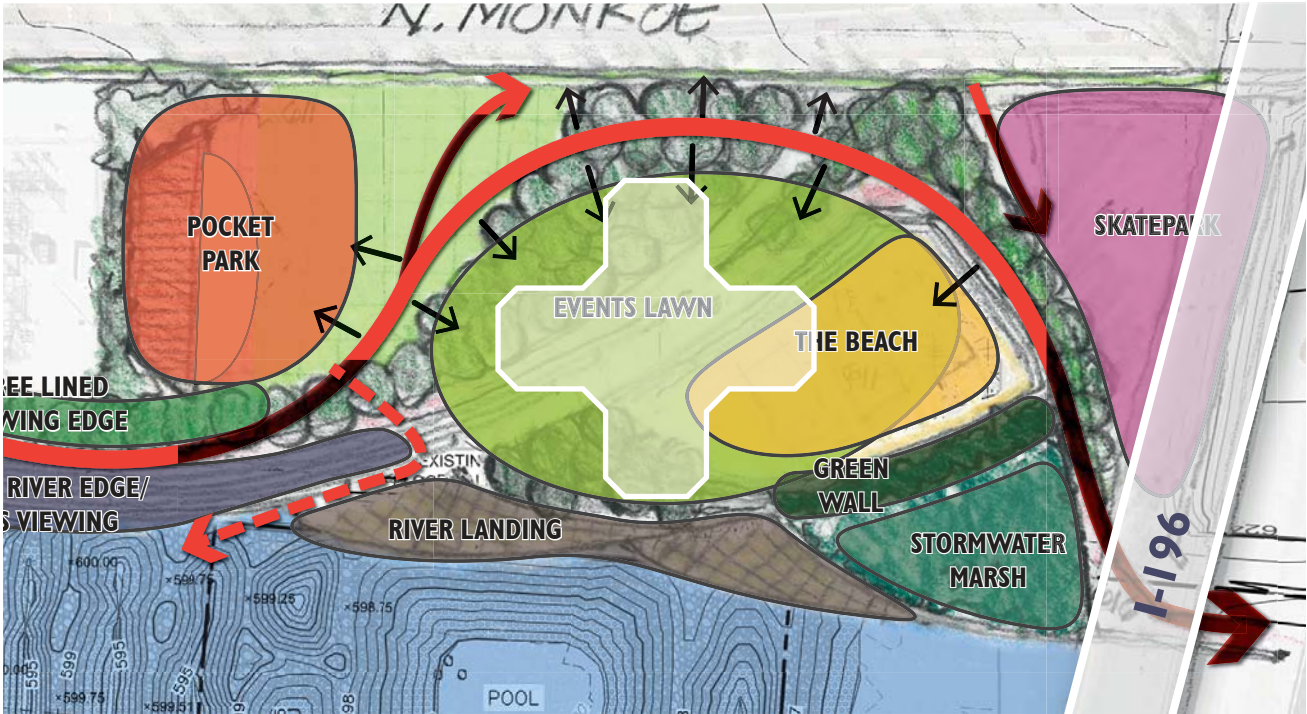


## Event Lawn



# Heart of the River - North Monroe

SCALE COMPARISONS -  
ROSA PARKS CIRCLE & THE EDDY EVENT SPACE



Rosa Parks Circle



Eddy Event Space





# Front Lawn

links a series of parks  
cultural district edge  
community/festival gathering  
outdoor education  
touch the water

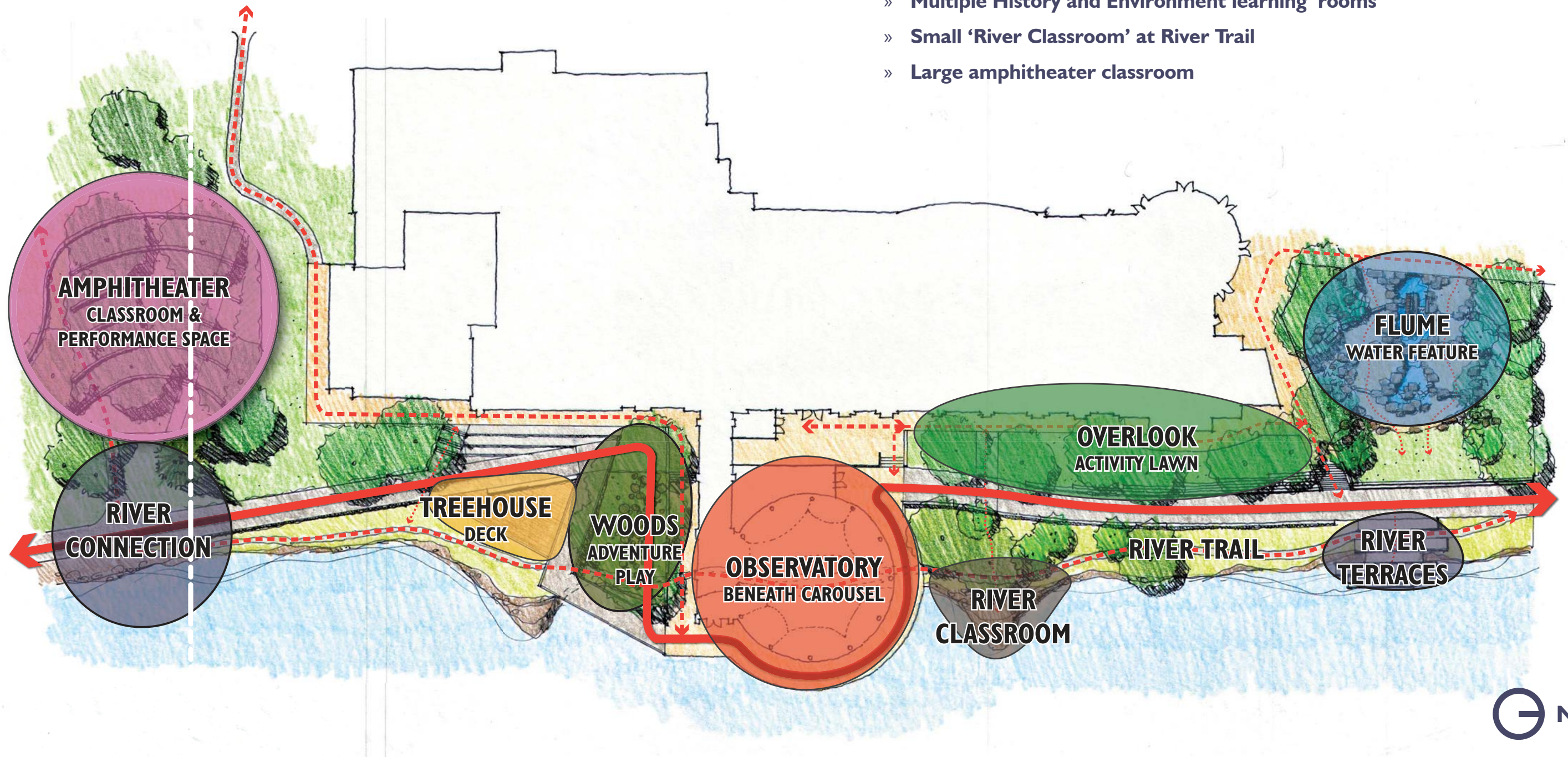




# Front Lawn - Museum Site

## Current Option

- » Utilizes existing wall on north side of site
- » Creates viewing deck on south side
- » Multiple History and Environment learning 'rooms'
- » Small 'River Classroom' at River Trail
- » Large amphitheater classroom

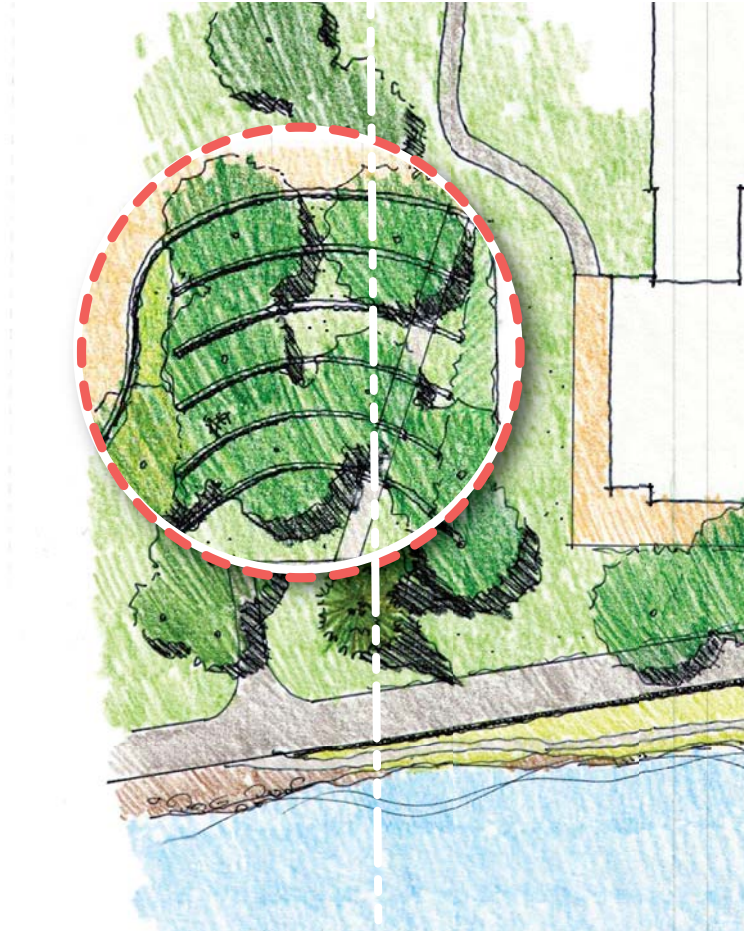




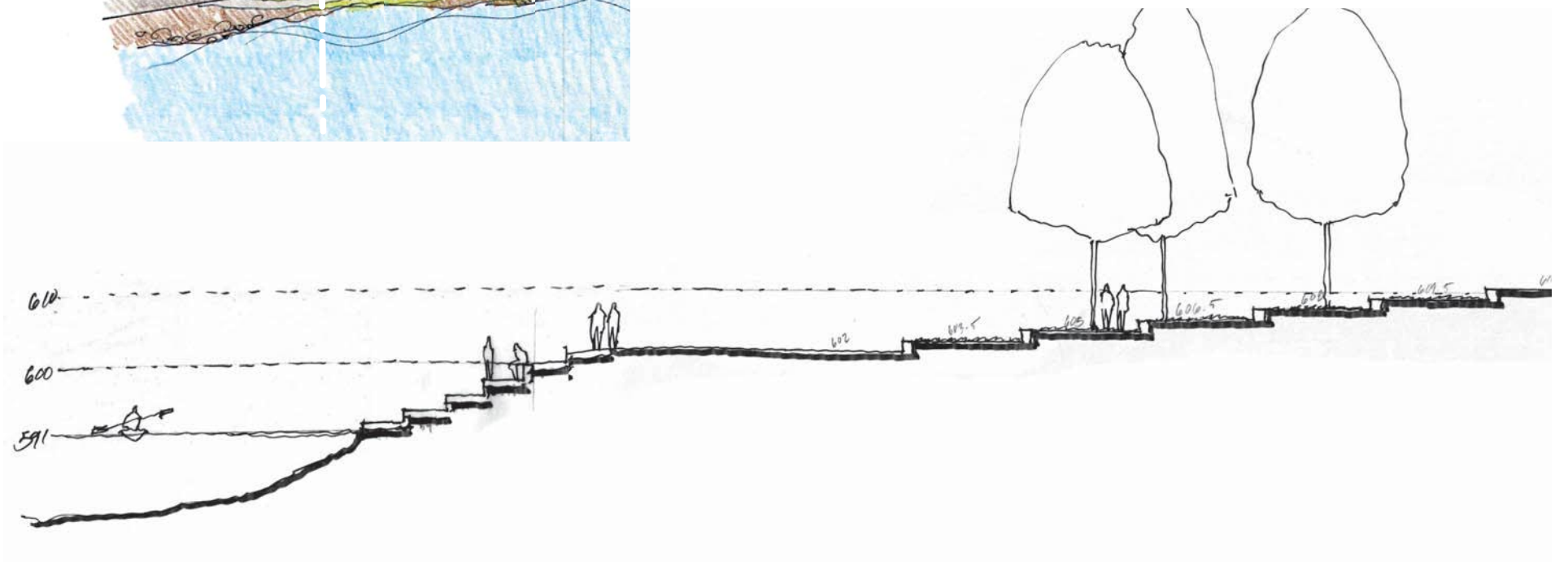
# Front Lawn - Museum Site

## AMPHITHEATER

Classroom & Performance Space



*Terraced amphitheater and architectural relic display*

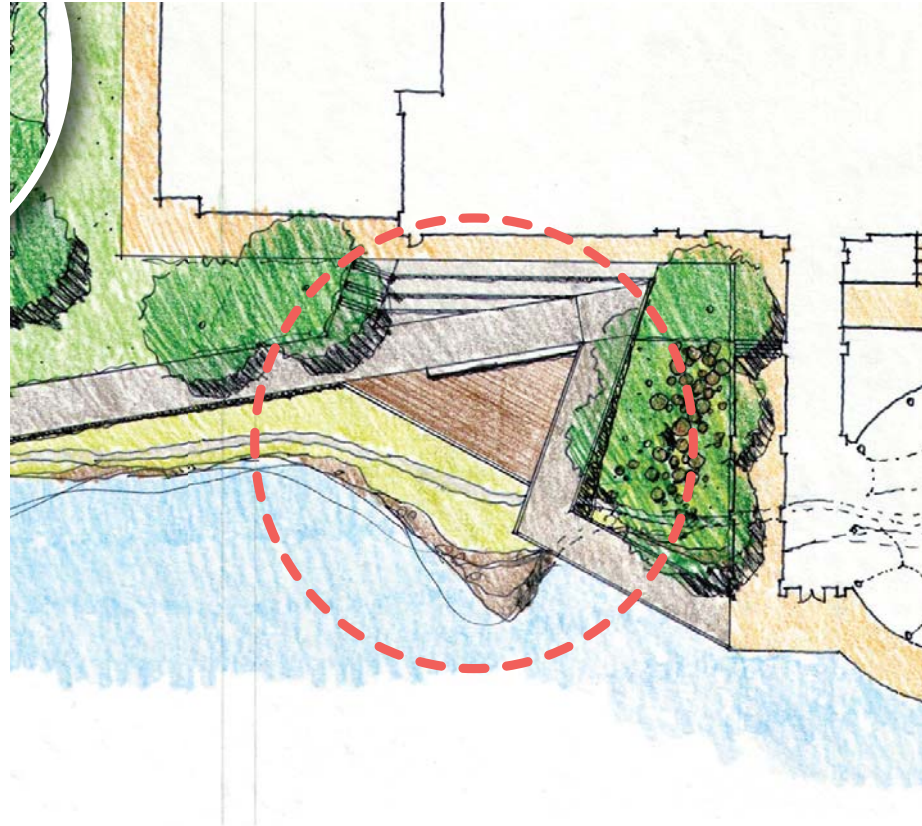




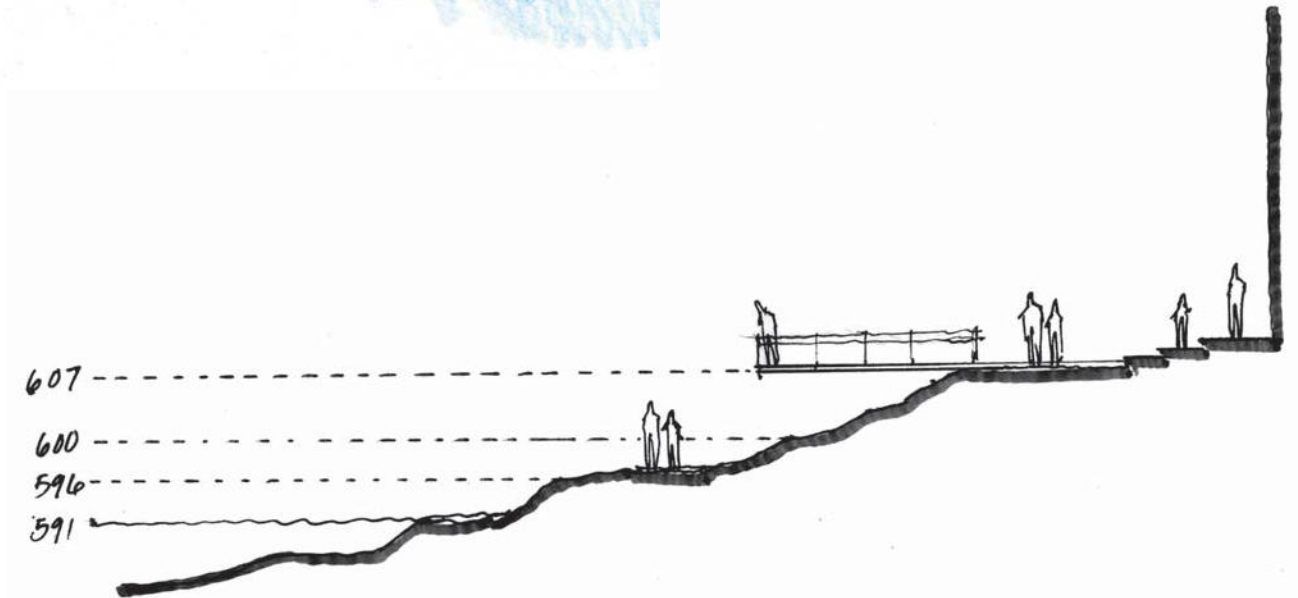
# Front Lawn - Museum Site

## TREEHOUSE

Deck



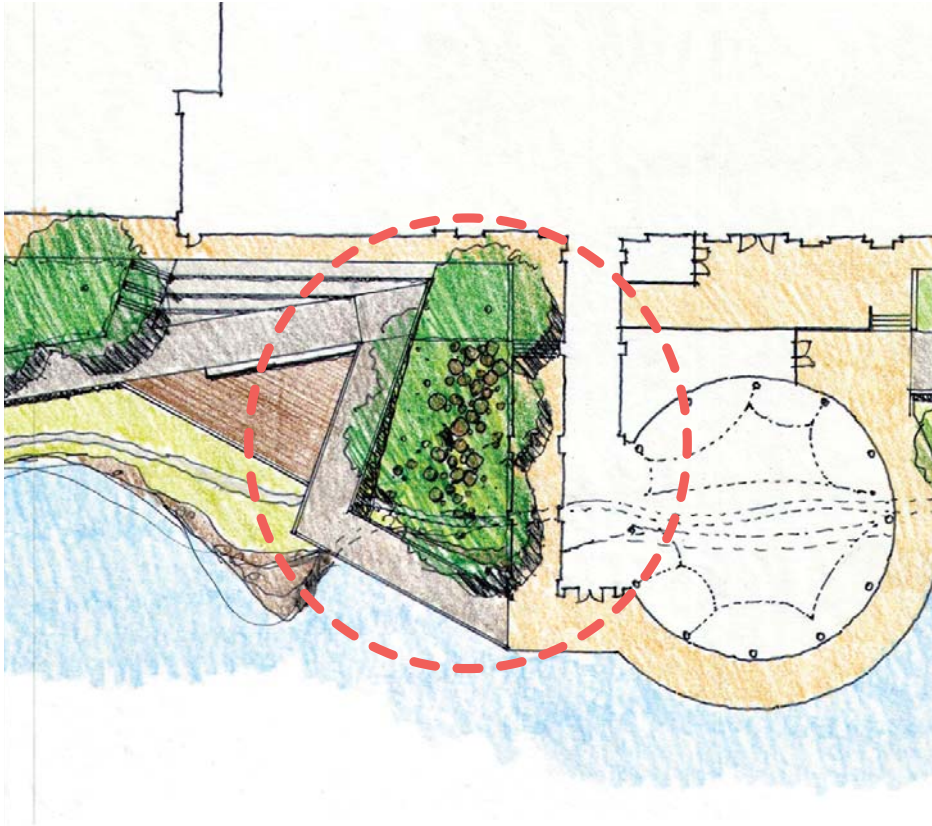
Wooden deck Blue Bridge and river overlook for events, classes and lounging



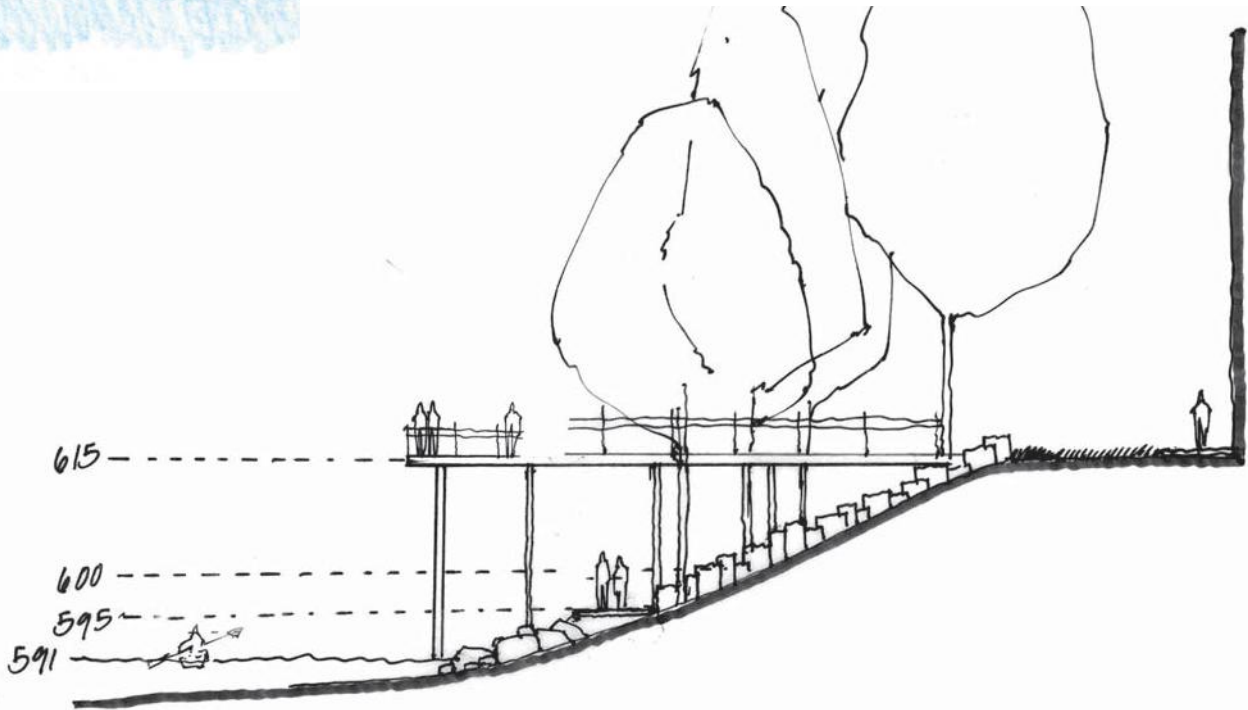


# Front Lawn - Museum Site

WOODS  
Adventure Play



*Lumber-based learning area with logging stamp displays, play areas and living grove of trees*

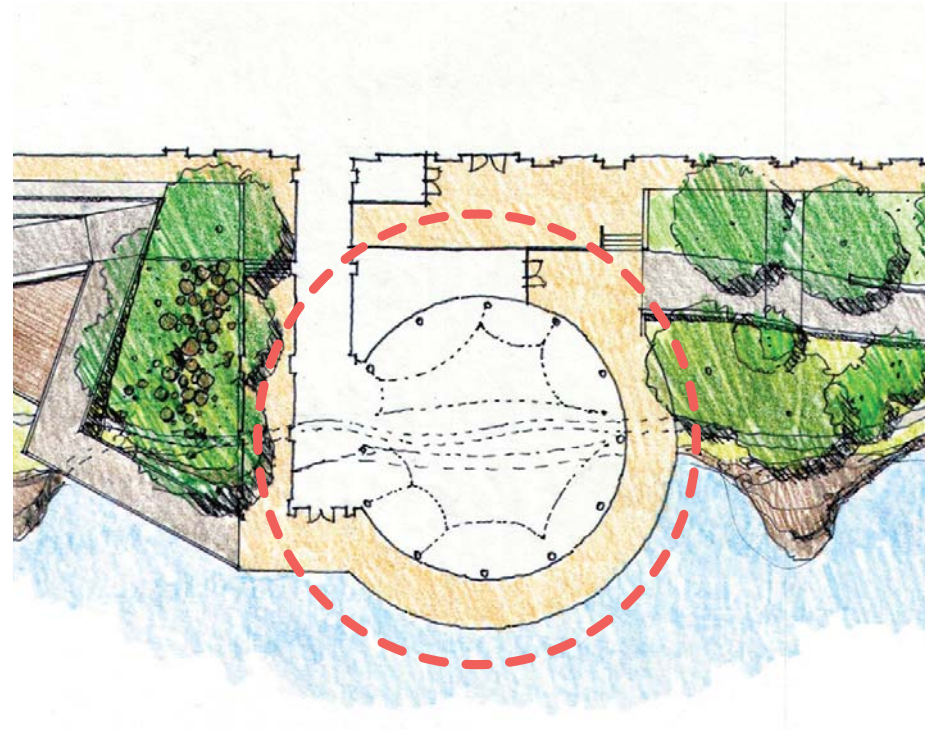
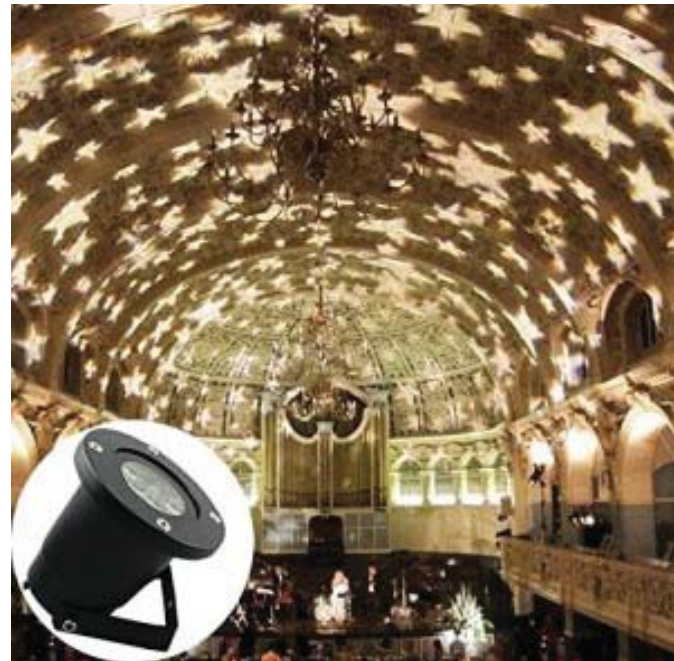




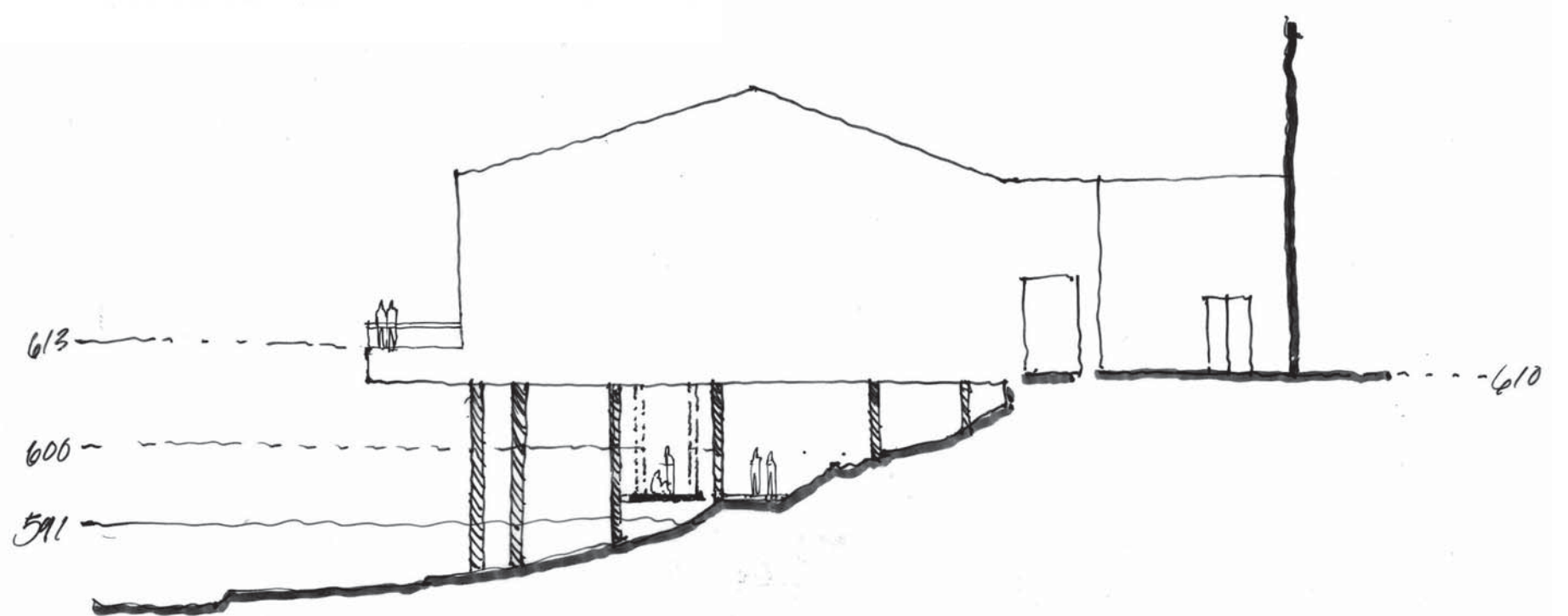
# Front Lawn - Museum Site

## OBSERVATORY

Beneath Carousel



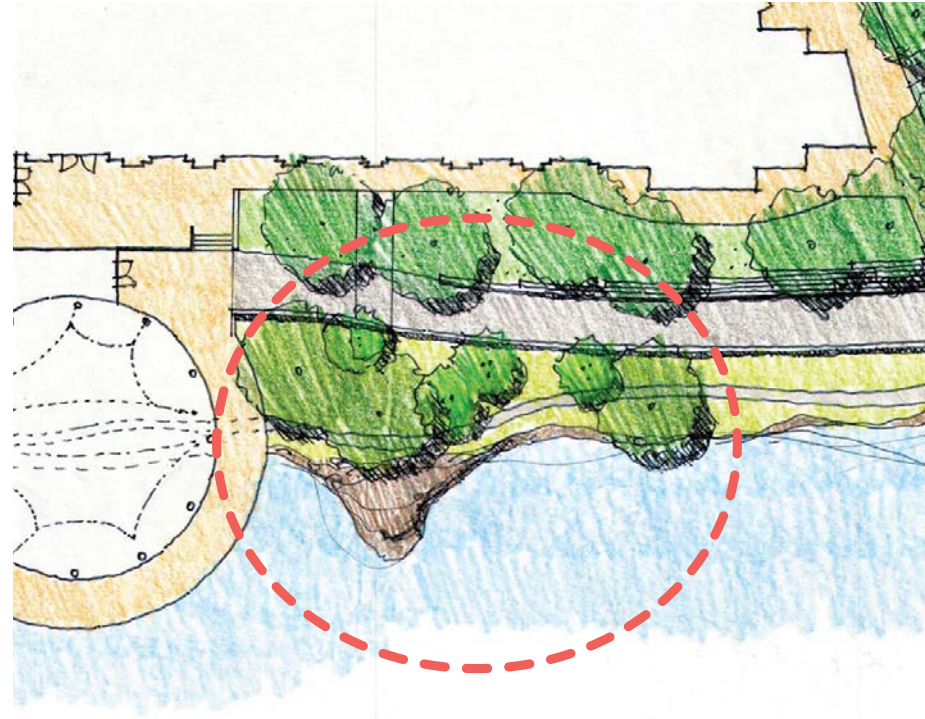
*Suspended seating platforms and overhead astronomical projection display beneath carousel*





# Front Lawn - Museum Site

## RIVER CLASSROOM



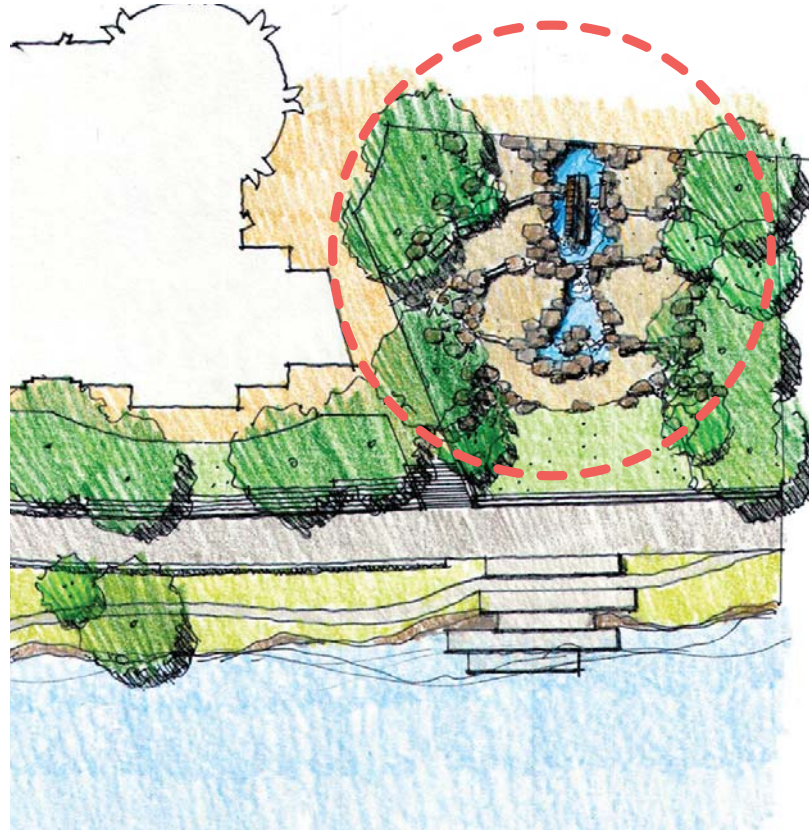
*Edible gardens are activated by outdoor kitchen classrooms and dining area*



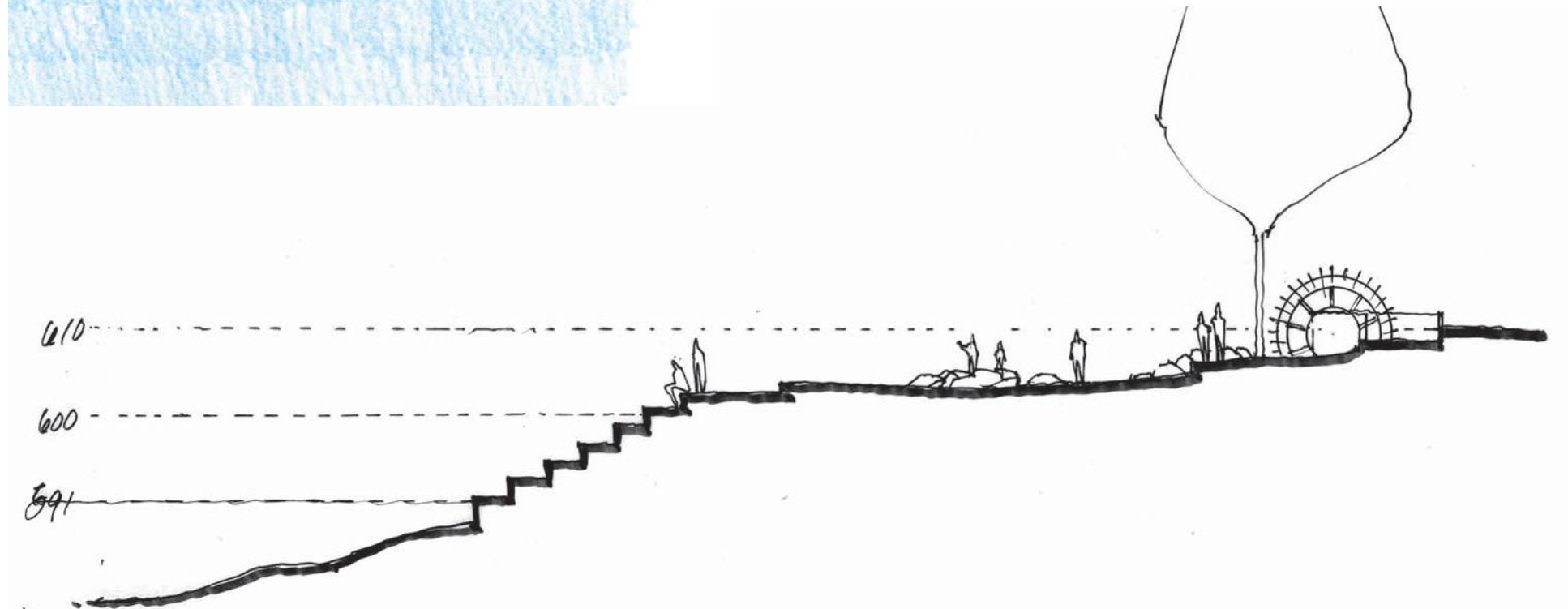
# Front Lawn - Museum Site

## FLUME

Water Feature



*Interactive water feature inspired by the historic Crescent Mill canal and flume*

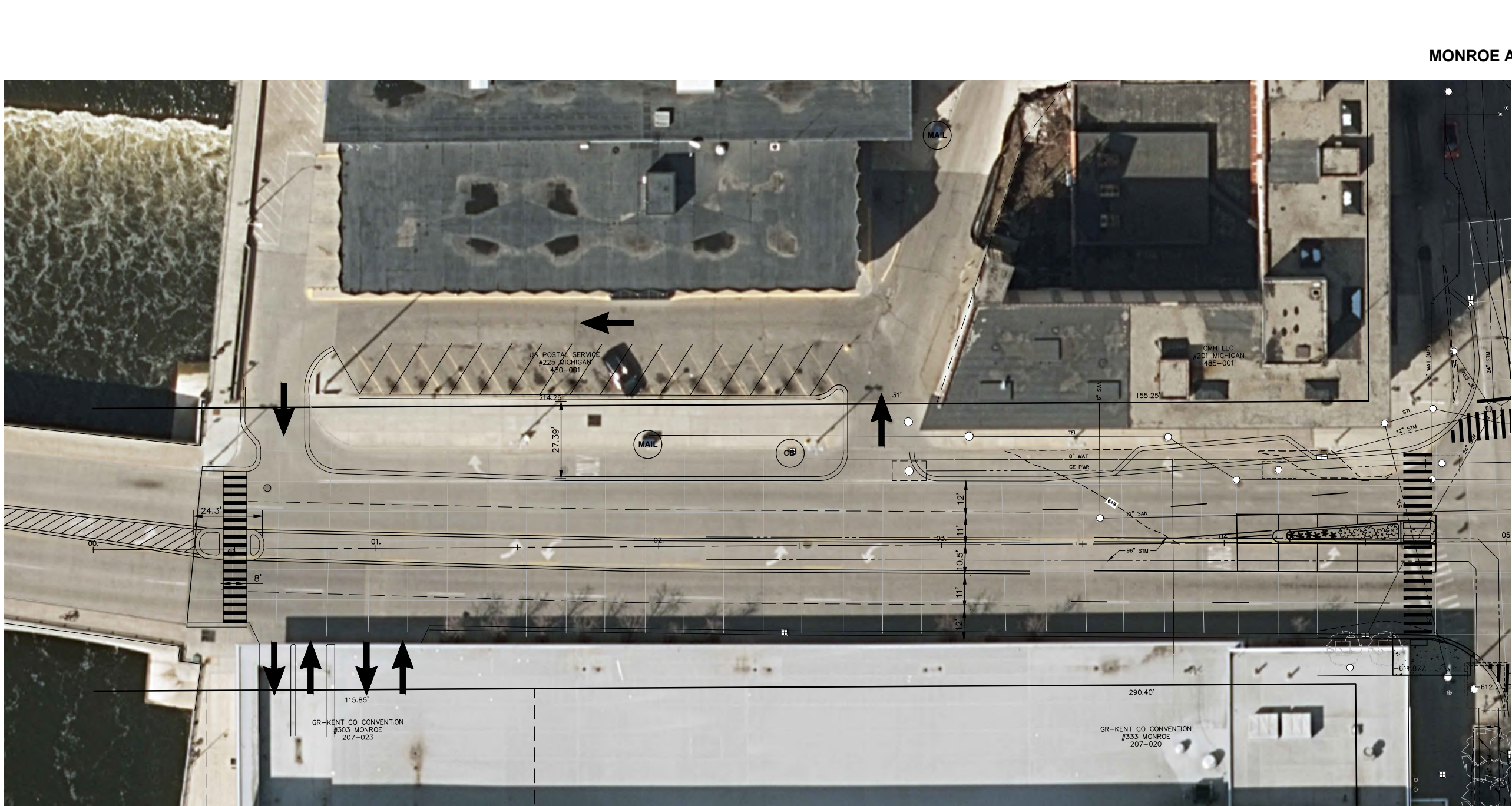






**DOWNTOWN**  
GRAND RAPIDS INC.





MONROE AVE.



SCALES  
PLAN: 1"=20'

RIVERWALK  
MICHIGAN CROSSING  
OPTION A

REV. NO.	DESCRIPTION
DESIGNED & SURVEYED BY:	fishbeck, thompson, carr & huber, inc. 1515 Arboretum Dr. SE Grand Rapids, Michigan 49546 phone (616)575-3824, fax (616)464-3996 engineers • scientists • architects • constructors
City of Grand Rapids Design, Development and Enterprise Services Engineering Department	
RECONSTRUCTION OF MICHIGAN STREET FROM THE GRAND RIVER TO MONROE AVE.	
Drawn by _____	GPF No. _____
Check: Field _____	Sheet No. _____
Check: Office _____	XX of _____