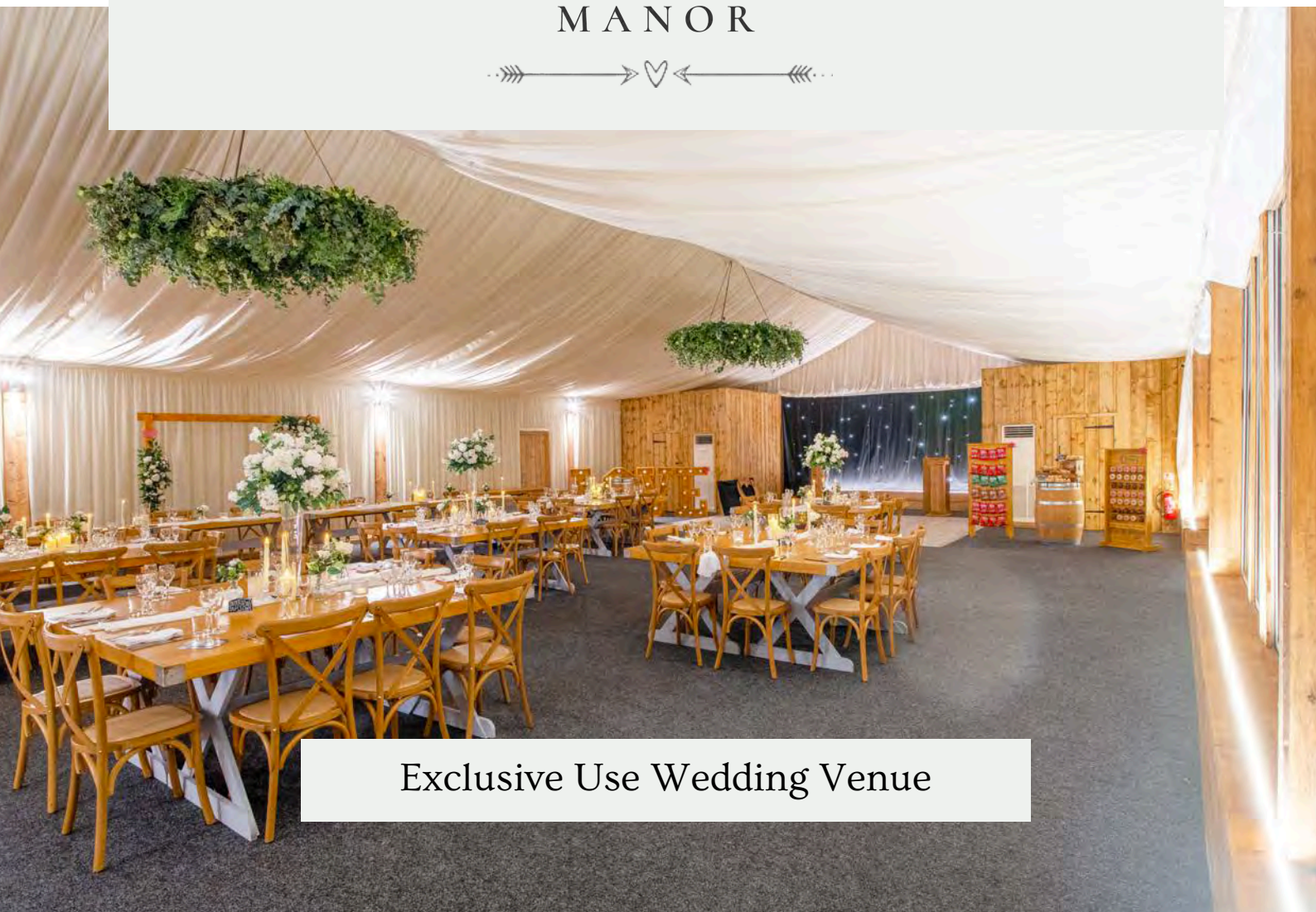


PLUM PARK

MANOR



Exclusive Use Wedding Venue

About THE VENUE



VENUE FEATURES



- | | | |
|--------------------------|-----------------------------------|-------------------------------|
| ✓ Exclusive Use | ✓ Couples Access from 9am | ✓ Licenced Bar Until Midnight |
| ✓ Civil Ceremony Licence | ✓ All Prices Include VAT | ✓ Beautiful Gardens |
| ✓ 2 Dressing Rooms | ✓ Personal Wedding Manager | ✓ LED Marquee Uplighting |
| ✓ In-House Catering | ✓ Honeymoon Suite | ✓ Free WIFI |
| ✓ Guest Accommodation | ✓ Outdoor Kitchen | ✓ Air Conditioned |
| ✓ In-House DJ | ✓ Dance Floor with Starlight Wall | ✓ Car Parking |

SEE OUR AMAZING GOOGLE REVIEWS



"From seeing the venue for the first time and being blown away, and through the planning stage, the staff could not be more accommodating and helpful.

I would highly recommend choosing Plum Park Manor for your wedding day! It was simply incredible in all areas and we couldn't have asked for a better day!

Meg Bailey

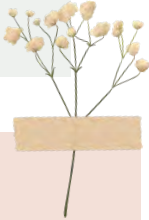


SCAN TO SEE
OUR REVIEWS

The morning OF YOUR WEDDING



Enjoy **exclusive early access to our spacious dressing room** from **9am** for you, your party, and your suppliers. **An extra dressing room is available on request.**



Did You Know?

You can order **breakfast** and **drinks** to your dressing room while you get ready!



SCAN HERE TO
SEE OUR MENU



We can accommodate up to **19 guests overnight** across **8 beautifully appointed bedrooms**, including our **romantic honeymoon suite**.

A dedicated breakfast room is available for all overnight guests the following morning.



The Bars AND LOUNGE

Our dedicated bar area can be open from **midday until midnight**, ready to keep the drinks flowing from the first toast to the final dance.



WHAT WE SERVE



Premium spirits and mixers

A selection of cocktails

Fine wines and Champagne

Draught and bottled beers

Alcohol-free alternatives

Soft drinks and hot beverages



The ORANGERY

CAPACITY



Up To 120 Guests

The Ceremony Room at Plum Park Manor which is licenced for civil ceremonies.



Did You Know?

We can help style your ceremony room with **elegant chair drapes, table runner, and a dressed arch**, all available **in-house**.



SCAN HERE TO
SEE OUR
HIRING ITEMS



The MARQUEE

CAPACITY



Seated Meal: Up To 192 Guests

Evening Guests: Up To 200 Guests

Our beautiful marquee is **fully heated** and **air-conditioned**, ensuring comfort for you and your guests all year round. We offer **in-house catering only**, with menus crafted by our talented chefs.

To elevate your celebration, we also provide **DJ & entertainment packages**, **table décor options**, and **customisable lighting**, allowing you to tailor the space perfectly to your wedding vision.



Did You Know?

You can elevate your marquee with our range of **finishing touches**, including **love letters**, **photo walls**, **lanterns**, **marquee lighting**, and even a **selfie station**!

Pair it with our **in-house table décor packages** for a beautifully styled setup that's ready to impress.



SCAN HERE TO
SEE OUR HIRING
ITEMS



The GARDENS



Did You Know?

Add a fun twist to your wedding with
fireside treats and **garden games!**

Think toasted marshmallows, s'mores, and
lawn games your guests will love.



SCAN HERE TO
SEE OUR GARDEN
HIRING ITEMS



The Venue AT DUSK

As the sun sets, Plum Park Manor lights up with a cosy glow and the terrace starts to twinkle.

It's the perfect time to grab a bite from **the Outdoor Kitchen**, enjoy a drink, and soak up the evening vibes.



Did You Know?

We offer **in-house DJ & Entertainment Packages** to keep your party going all night!

With custom playlists, lighting, and optional extras, we'll make sure your evening feels exactly how you imagined.



SCAN HERE TO
SEE OUR
ENTERTAINMENT
EXTRAS



Our FOOD & DRINK

SCAN HERE



TO VIEW OUR MENUS

What makes us truly unique is our exceptional in-house catering, with high-quality ingredients, bespoke menus, and unforgettable flavours prepared by our talented chefs.

Our tailored drinks service, from signature cocktails to personalised wine selections, ensures every celebration is distinctive and memorable.





OUR PLANNING PROCESS

VUEWING



Our CONTACTS

We'd love to help you plan your perfect wedding at Plum Park Manor.

Whether you're ready to book a viewing, have questions about our packages, or just need some friendly advice, our team is here to help every step of the way.

GET IN TOUCH WITH THE VENUE TEAM

01327 460 025

enquiries@plumparkmanor.co.uk

www.plumparkmanor.co.uk



@plumparkmanor



Towcester – 2 miles
Milton Keynes – 10 miles
Buckingham – 10 miles
Brackley – 12 miles
Northampton – 12 miles
Daventry – 14 miles
Banbury – 21 miles
Bedford – 25 miles
Rugby – 25 miles
Aylesbury – 25 miles

5K+ Weddings Hosted
20+ Years of Experience

A PART OF

THE VENUE GROUP
WEDDING VENUE MANAGEMENT

ASHTON LODGE
— COUNTRY HOUSE —

Milling  Barn

THE
GREAT BARN