



# Weddings & Venue Hire

---

[www.hallplace.org.uk](http://www.hallplace.org.uk)  
[hallplacefunctions@bexley.gov.uk](mailto:hallplacefunctions@bexley.gov.uk)  
01322 526574



# Welcome to Hall Place

Hall Place and Gardens is one of the most sought-after venues for weddings and ceremonies in the South East with over 400 years of history. Whether you are looking for a stunning venue for your wedding ceremony, a place to host your entire day's celebration, or looking for the perfect place for a family gathering or conference, our dedicated team can help you plan every single detail making it a truly memorable day.

We offer a range of packages and special touches for your celebration and your event will be the only one taking place in the venue meaning complete privacy and the flexibility to use the beautiful historic spaces in any way you choose.

This brochure gives an overview of the spaces available and the different ways they can be used so you can begin to imagine how Hall Place and Gardens could be the perfect venue for your next event.



# Great Hall

The Great Hall is the heart of Hall Place and Gardens and offers some of the most stunning features seen throughout the house. The Great Hall can accommodate wedding ceremonies for up to 100, dining also for 100 and up to 140 for evening receptions and dancing. Featuring high ceilings, wood panelled walls and chandelier lighting, the Great Hall evokes the memories of candlelit banquets, family celebrations and entertaining to impress.

Alternatively, the Great Hall can be used for a range of conferences, trade shows and other private events.







# Tudor Kitchen

The Tudor Kitchen is located directly off the Great Hall and is perfect for ceremonies for up to 100 and then as a separate area for your evening bar or buffet. Alternatively, the space can be used for breakout sessions from the main hall or as an area for lunch and refreshments during a larger conference.

Featuring a range of period features such as the stone lined walls, leaded windows and a Tudor-style beamed ceiling, this space offers the chance for more atmospheric ceremonies, brought to life with battery candles and creative lighting design.

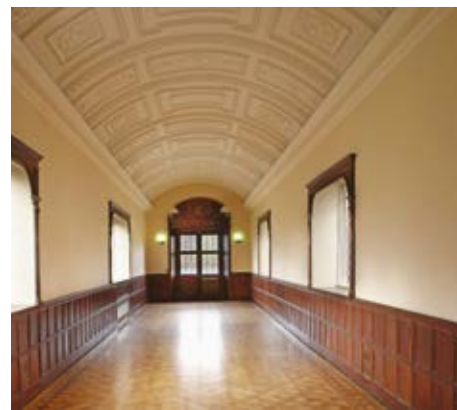




## Great Chamber and Long Gallery

The Great Chamber offers a smaller, more exclusive atmosphere for ceremonies, accommodating up to 50 guests and provides views across the West Lawns and Queen's Beasts, the famous topiary sculptures. Directly off the Great Chamber is the Long Gallery, an ideal space for daytime meetings.

Both spaces offer a wet weather option for a drinks reception after ceremonies in the Tudor Kitchen or Great Hall or can be used for smaller meetings and breakout sessions during the week.







# The North Courtyard

This private, outdoor space provides some of the best views of the oldest part of the house and its architecture. Located directly off the Great Hall and Tudor Kitchen, the North Courtyard is perfect for summer events and drinks receptions. Relax and catch up with guests as canapés and drinks are served under the imposing Great Hall windows and the beautiful stonework.





## The Gardens

The award winning gardens of Hall Place provide the perfect opportunity for a range of photographs to capture the special day. Whether it's the bride and groom or the whole wedding party, there are formal planted areas such as the rose gardens and Queen's Beasts or the more natural areas such as the river, expansive lawns and hidden clearings.





# Riverside Café

The sound of the rushing weir and views over the extensive parkland makes the Riverside Café a stunning alternative venue for smaller events. Available for set-up from 6pm each day, the café is the perfect location for a small dinner, exclusive drinks reception or a standing buffet with the option of summer BBQs.





# Ceremonies

Holding your ceremony at Hall Place and Gardens will provide an unforgettable experience, full of history and romance. This may be part of the whole day's celebration or you may wish to hold your reception at another venue.

In both cases, our team is here to provide advice and support to ensure the process is as stress free as possible.

To hold your ceremony with us here at Hall Place please complete the ceremony booking form found on our website wedding page and return it with your deposit. Once received, we can place the booking with the Registrars and will send an email or letter of confirmation.







# Wedding Packages

Our team understands how stressful planning your wedding day can be and are able to offer some fantastic wedding packages focusing on the most important elements whilst still allowing for personal touches to be added to make your day unique.

## Food and Beverage

Our on-site caterer, Relish, can provide a range of options for your wedding menu choices with many delicious dishes and hand picked seasonal ingredients. Relish are experts in professional service and have an excellent understanding of the venue. The full menus can be found on our website.

The package also covers your post-ceremony reception drink, perfectly paired wines for your meal and a glass of fizz for the toast.

Once the evening gets going and the dance floor fills up, Relish will provide a tasty evening buffet, perfect for refueling and dancing the night away.

[www.relish.co.uk](http://www.relish.co.uk)

[chris@relish.co.uk](mailto:chris@relish.co.uk)

## Flowers

Liaise with our specialist florist who can provide advice and options for table centres and top table arrangements.

## DJ

Your evening entertainment will be provided by our resident DJ. Discuss your first dance and your playlist and take advantage of his expert knowledge on how to get the party started to ensure you dance the night away with your favourite people.

*"We thoroughly enjoyed our day and was so very pleased with every aspect – it was fantastic. Thank you so much for all of your support over the last ten months, it has been super and for all of the staff's assistance on the day – it made for a wonderful experience."*





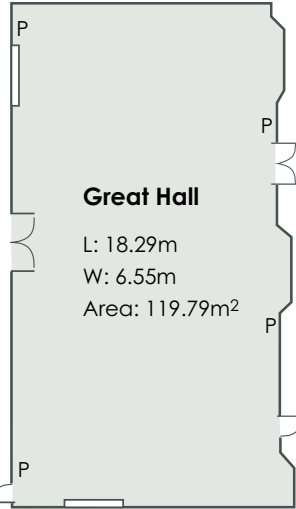
# Private and Corporate Events

As a conference venue we have a variety of historic and modern rooms available and these can be used for conferences and larger plenary sessions. Small meetings and breakout sessions can also be held in the Limerick Room, available for daytime hire during the week.

As a venue for private events you can benefit from the beautiful surroundings where your guests can admire the magnificent rooms and the sprawling gardens. Birthdays, anniversaries and christenings all work perfectly in the venue and the on-site team can suggest magical ways to dress the space and provide an unforgettable experience for your guests.







# Useful information

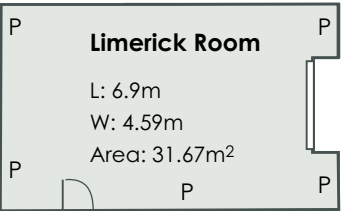
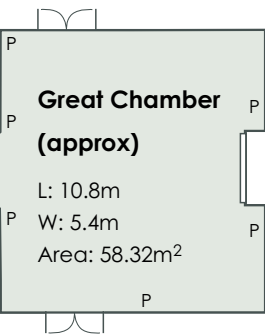
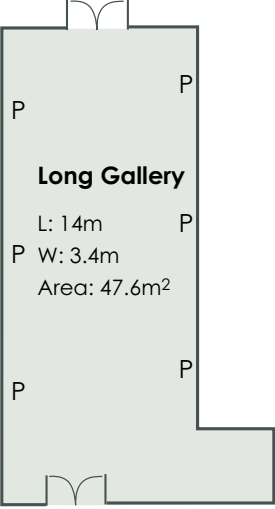
Great Hall Capacity			
Reception	Seated Dinner	Theatre/Ceremony	Boardroom
140	100	100	34

Tudor Kitchen Capacity		
Reception	Seated Dinner	Theatre /Ceremony
100	28	100

Great Chamber & Long Gallery Capacity			
Reception	Seated Dinner	Theatre/Ceremony	Boardroom
50	40	40	22

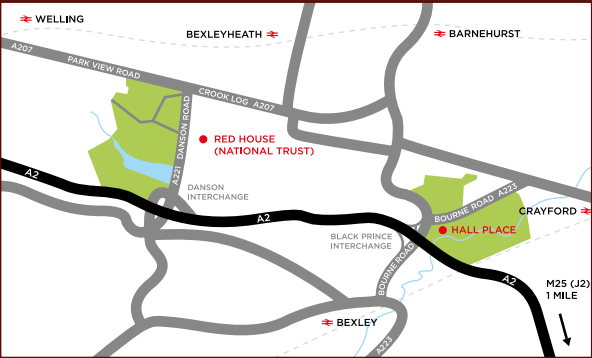
North Courtyard Capacity	
Reception	140

Limerick Room Capacity			
Reception	Seated Dinner	Theatre/Ceremony	Boardroom
N/A	12	15	12



# Contact us

Hall Place is the perfect location for weddings, conferences, celebrations and parties. Located just off the A2 close to the M25 with ample parking and direct rail links to London, Hall Place offers an inspirational venue which will impress guests and clients.



Hall Place & Gardens  
Bourne Road,  
Bexley, Kent DA5 1PQ  
[www.hallplace.org.uk](http://www.hallplace.org.uk)  
01322 526574  
[hallplacefunctions@bexley.gov.uk](mailto:hallplacefunctions@bexley.gov.uk)

## PHOTO CREDITS

Jeff Oliver: page 11 left; page 17  
[www.jeffoliver.co.uk](http://www.jeffoliver.co.uk)

The Other Day Photography:  
page 5; page 6; page 7; page 11 right;  
page 16 right; page 18; page 19  
[www.theotherday.co.uk](http://www.theotherday.co.uk)





---

Hall Place & Gardens, Bourne Road, Bexley, Kent DA5 1PQ

[www.hallplace.org.uk](http://www.hallplace.org.uk)

01322 526574

[hallplacefunctions@bexley.gov.uk](mailto:hallplacefunctions@bexley.gov.uk)