



BOARD MEMBER TRAINING MANUAL

TO LEAD EVERY COACH AND ATHLETE INTO A GROWING RELATIONSHIP WITH JESUS CHRIST AND HIS CHURCH

INTEGRITY

SERVING

TEAMWORK

EXCELLENCE



BOARD MEMBER TRAINING

MANUAL

TO LEAD EVERY COACH AND ATHLETE INTO A GROWING RELATIONSHIP WITH JESUS CHRIST AND HIS CHURCH

INTEGRITY

SERVING

TEAMWORK

EXCELLENCE



Table of Contents

Introduction

Letter From Our President Shane Williamson 6

Vision, Mission, Values, Strategy, Methods 7

Chapter 1: Fulfilling the Vision

Fulfilling the Vision 8-9

Vision, Mission, Values, Strategy, Methods

Chapter 2: Where and How We Serve

Where and How We Serve 11-15

US Field Ministry Map, US Divisional Map, US Global Map, Lanes for
Constituents, Administrative Charge

Chapter 3: Why Boards

Why Boards? 17-21

Why Boards, Seasons/Stages of Boards,
Leadership Board Structure, Board Teams, Board Recruitment, Board
Member Expectations

Chapter 4: Relationship Between Board and Staff

Relationship Between Board and Staff 22-23

Chapter 5: Action Steps

What's Next 25



Letter from the President

Dear Board Member,

Welcome to the Leadership Board of the Fellowship of Christian Athletes ministry. Since 1954, FCA has been challenging coaches and athletes on the professional, college, high school, junior high and youth levels to use the powerful medium of sports to impact the world for Jesus Christ.

I want to thank you personally for committing your time, talents and resources to this ministry!

The local Leadership Boards play a crucial role in furthering the reach of FCA and seeing the world transformed by Christ. You are one of nearly three thousand FCA volunteers across America who serves in this dynamic capacity. This year, FCA will reach approximately two million people through the ministries of FCA, including more than 50,000 coaches and athletes attending FCA Camps and more than 450,000 students and sponsors meeting regularly in FCA Huddles at their schools.

Praise God for the continued blessing He pours out on this ministry and those who are involved! It's great to have you as a part of the team!

It is our prayer that this Board Training Manual will be a resource that helps guide your team in implementing the FCA ministry in your area.

May the Lord bless your efforts to influence the lives of coaches and athletes for the Kingdom of Christ.

Teammates in Christ,

Shane Williamson

President/CEO Fellowship of Christian Athletes

Vision

To see the world transformed by Jesus Christ through the influence of coaches and athletes.

Mission

To lead every coach and athlete into a growing relationship with Jesus Christ and His church.

Values

Our relationships will demonstrate steadfast commitment to Jesus Christ and His Word through Integrity, Serving, Teamwork and Excellence.

INTEGRITY (*Proverbs 11:3*) We will demonstrate Christ-like wholeness, privately and publicly.

SERVING (*John 13:1-17*) We will model Jesus' example of serving.

TEAMWORK (*Philippians 2:1-4*) We will express our unity in Christ in all our relationships.

EXCELLENCE (*Colossians 3:23-24*) We will honor and glorify God in all we do.

Strategy

TO and **THROUGH** the Coach

We pursue our vision and mission through the strategy of to and through the coach. We seek ministry first to coaches hearts, marriages and families. Then, when ready, we minister through coaches to their fellow coaches, teams and athlete leaders.

Billy Graham said, *"A coach will impact more people in one year than the average person will in an entire lifetime."*

With the influence of a coach, FCA recognizes the most strategic way to reach more athletes is to first reach the coach.

Methods

As FCA matures, we seek to make disciples through our methods of engaging, equipping and empowering coaches and athletes to know and grow in Christ and lead others to do the same.

ENGAGE (*1 Thessalonians 2:8*) We engage coaches and athletes through genuine relationships sharing our lives and the gospel.

EQUIP (*Ephesians 4:12*) We equip coaches and athletes to grow in Christ through God's Word.

EMPOWER (*2 Timothy 2:2*) We empower coaches and athletes to engage and equip others to know and grow in Christ.

FULFILLING THE VISION

Our Vision

To see the world transformed _____ through the _____ of coaches and athletes.

Vision: a clear and _____ picture of the _____ as it should be

Vision is the _____

Fulfilling our vision produces _____ and leads to fulfilling the vision that was birthed through God in Don McClanen's heart.

Our Mission

To _____ coach and athlete into a _____ relationship with Jesus Christ and _____

Mission: a call to _____ to _____ our vision

Mission is the _____

Pursuing our mission gives: _____.

Our mission statement has three parts:

- 1.
- 2.
- 3.

Our Values

In our relationships we will _____ our steadfast commitment to Jesus Christ through

_____ and _____.

Values: core _____ that _____ and _____ our culture

Values are the _____

Living our values creates _____



INTEGRITY:

SERVING:

TEAMWORK:

EXCELLENCE:

Our Strategy

_____ and _____ the coach

Strategy is the _____ focus that ensures our mission is _____

Strategy is _____

Executing our strategy ensures _____

Our Methods

Methods are the _____ to _____
our strategy

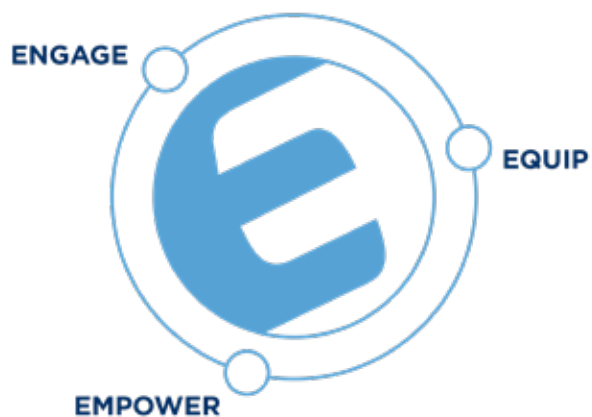
Methods are _____

_____ our methods creates

ENGAGE

EQUIP

EMPOWER



Handwriting practice lines consisting of horizontal lines on the right side of the page.



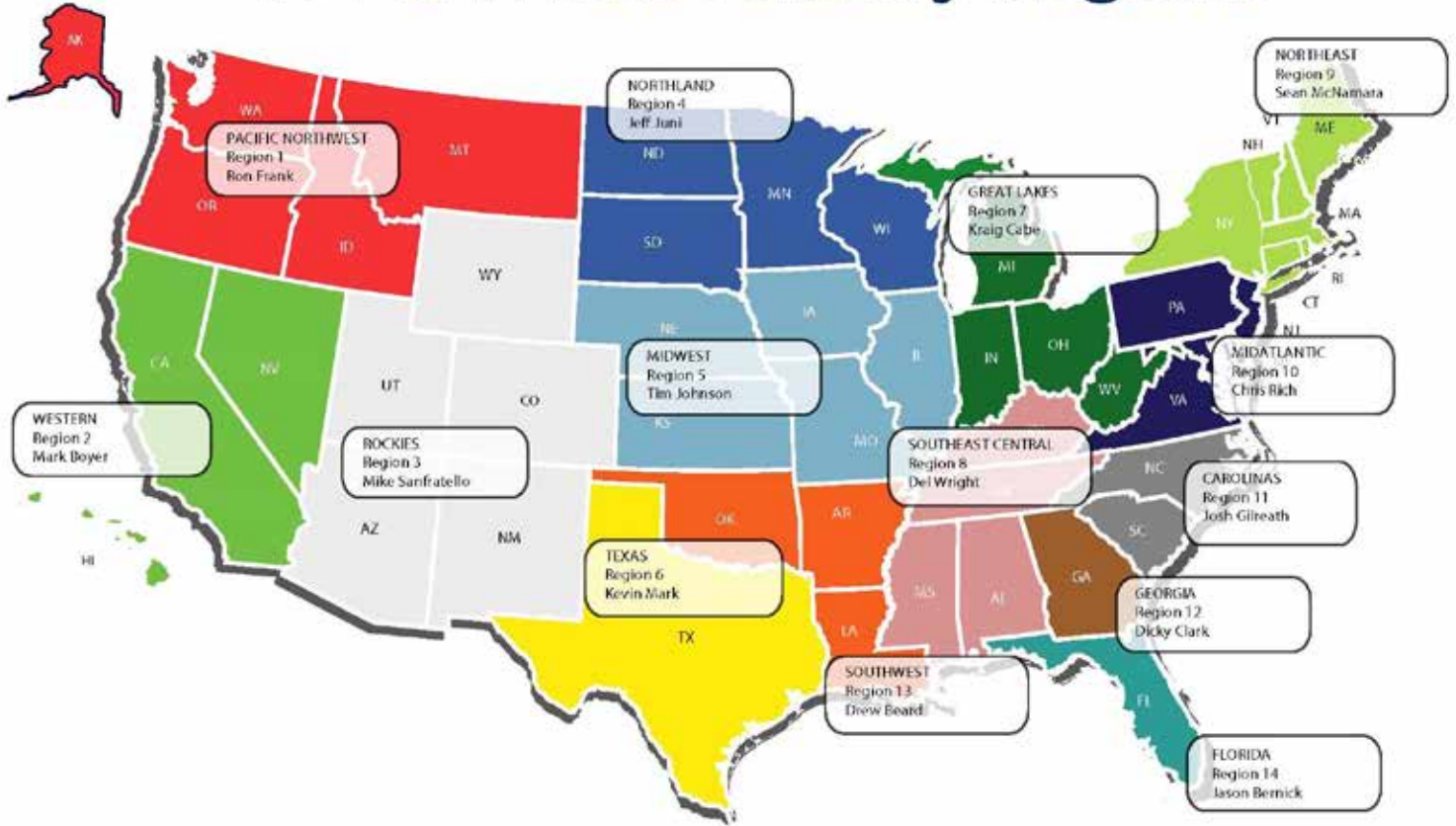


CHAPTER 2

Where and How We Serve

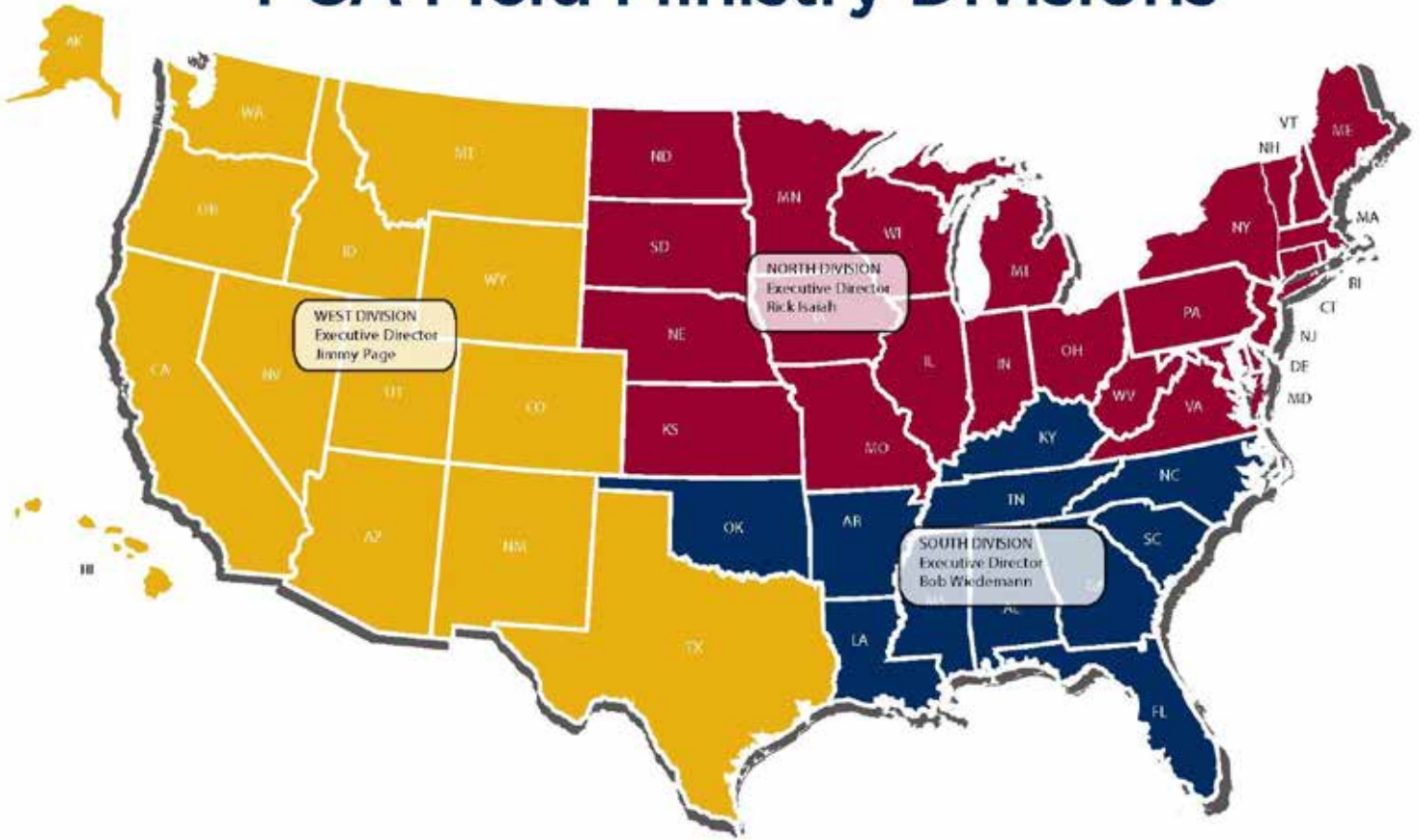


14 FCA Field Ministry Regions





FCA Field Ministry Divisions





14 FCA Global Regions



To see the WORLD...



We serve our _____ through the following
lanes:

International Ministry:

Talent Advancement:

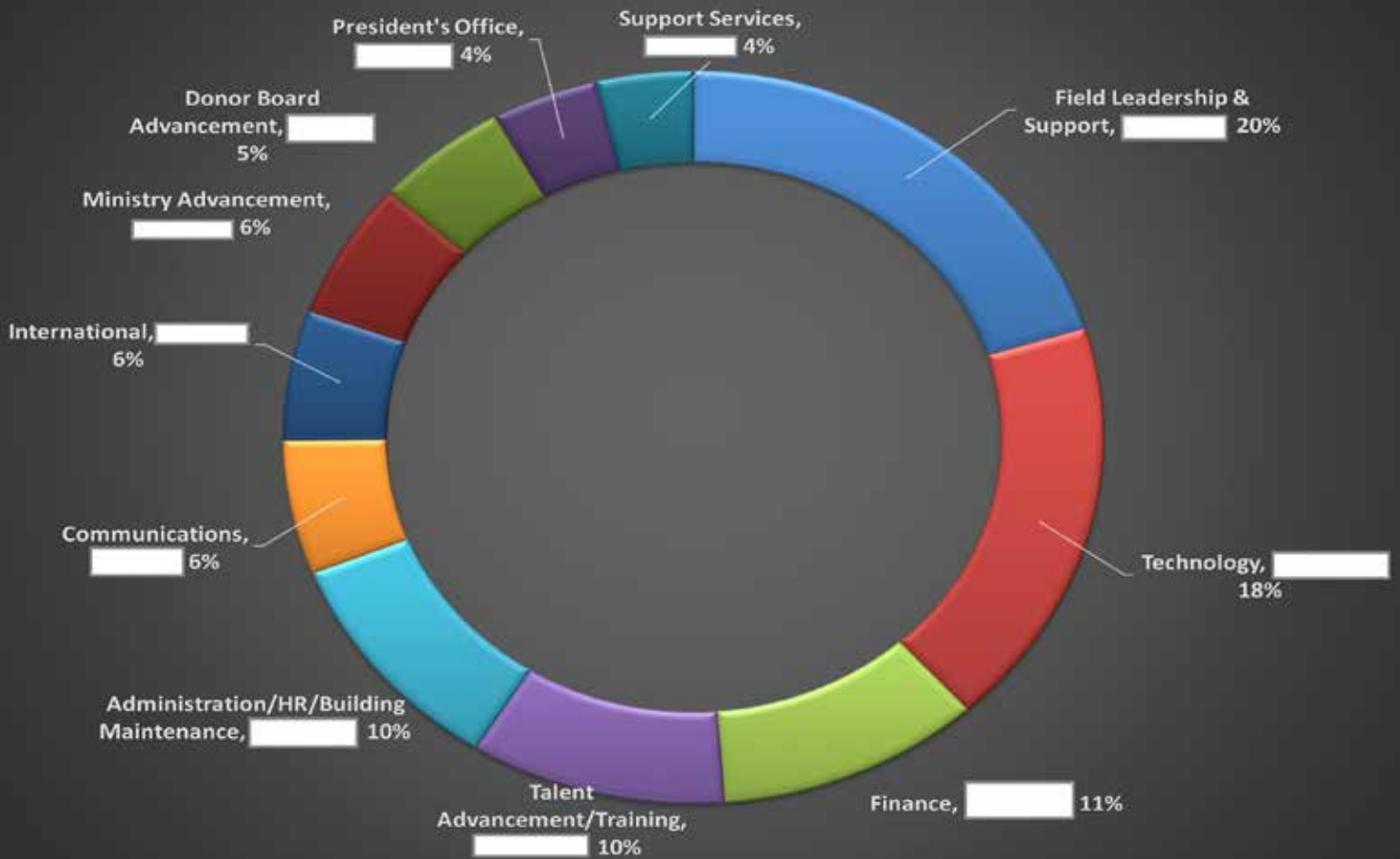
Ministry Advancement:

Board and Donor Advancement:

FCA Support Center:



What Does the Administrative Charge Pay For





JOSHUA 14
RISE



Season/Stages of a Board:

New / Start-up:

Moving & Growing:

Mature:

Leadership Board Structure:

Roles and Responsibilities



Why Board Teams?

Ministry Team:

The goal of the ministry team of the board is to help in the _____ of the ministry plan for the local area.

To _____ and help _____ that ministry plan.

Responsible for Keys To Victory (KTV's) annually / monthly ministry report.

_____, _____ and _____ the FCA Staff.

Planning:

Communications/Marketing Team:

The goal of the communication and marketing team is to _____ and _____ an effective communications plan for the FCA ministry.

This includes developing effective _____ and _____ which help in telling the story of the ministry impact and inviting people to get involved in FCA.

Planning:

Events Team:

The goal of the events team is _____ and _____.

highly effective major events in your area. These include Ministry, Donor and Staff events and experiences.

It is critical that all FCA events are run with _____

Lined writing area for notes.



and _____. Every event, whether ministry or donor, should be well planned and supported.

Planning:

Development Team:

The goal of the development team is to support donor relationships by ministering to hearts, thanking and casting vision. It is critical we _____ for our donors well, _____ ministry impact, and _____ donors directly to the ministry.

Planning:

Board Member Recruitment

Call:

Chemistry:

Character:

Capacity:

Diversity:

Relationship between Board and Area/Multi/Metro/State Director

Leading the Board

- Engage the Board Chair to refine and finalize the local vision and ministry plan for your area.
- Equip the Board Chair through regular training for their role
- Empower the Board Chair to grow the Board and organize Board Teams

Leading Board Members

- Engage with and minister to the hearts of Board Members
- Equip & Empower Team Leaders to complete key projects

Leading Board Meetings

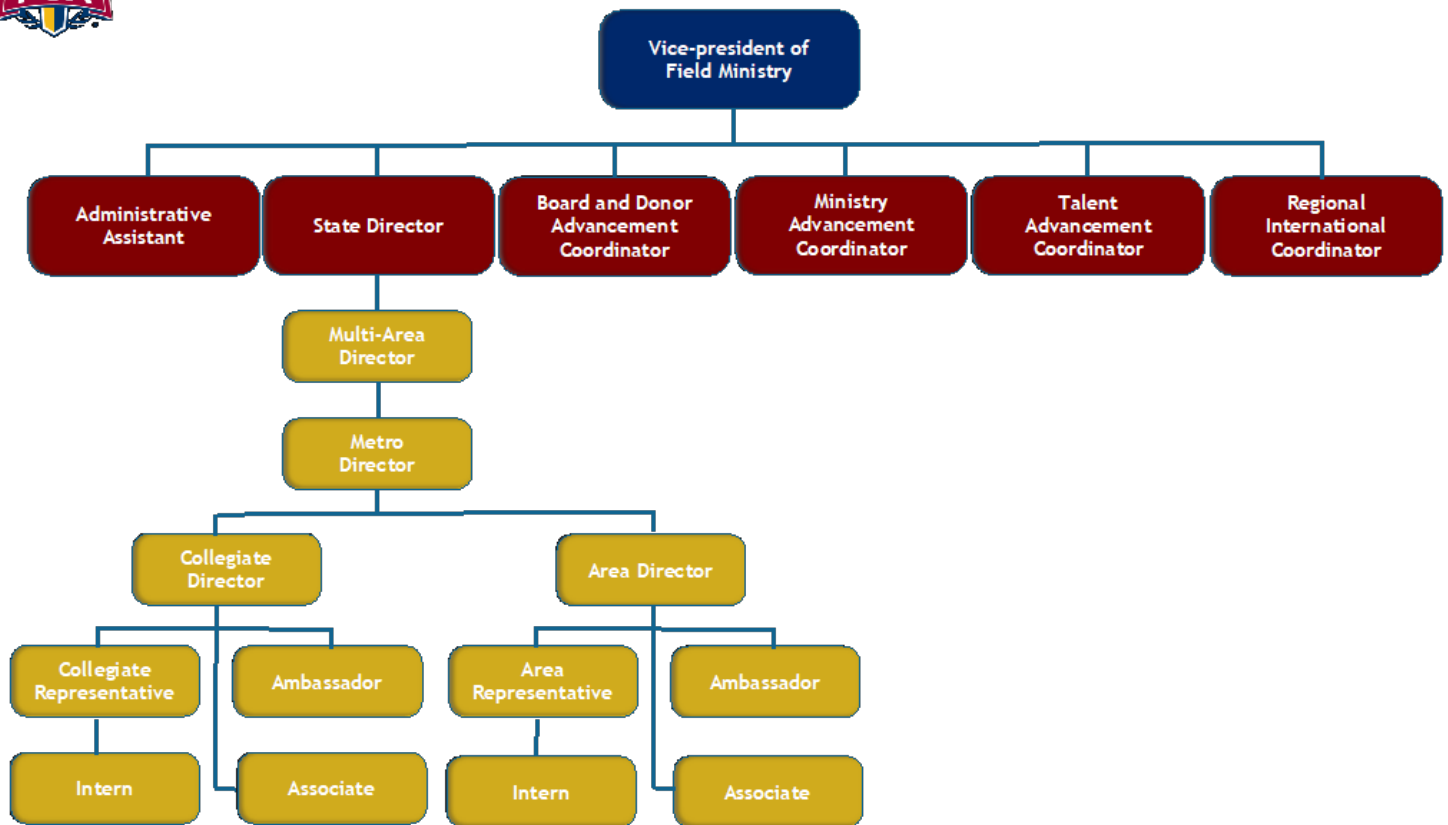
- Engage with Board Chair 2 weeks prior to the meeting to develop the agenda.
- Equip the Board Chair with all the information they need to lead (financial reports, ministry plan, etc)
- Empower them to lead the meetings and hold people accountable



Relationship between Board and Staff



U.S. Field Staff Reporting Structure







FCA SUPPORT CENTER
8701 Leeds Road
Kansas City, MO 64129
1-800-289-0909
www.fca.org



INTEGRITY

SERVING

TEAMWORK

EXCELLENCE