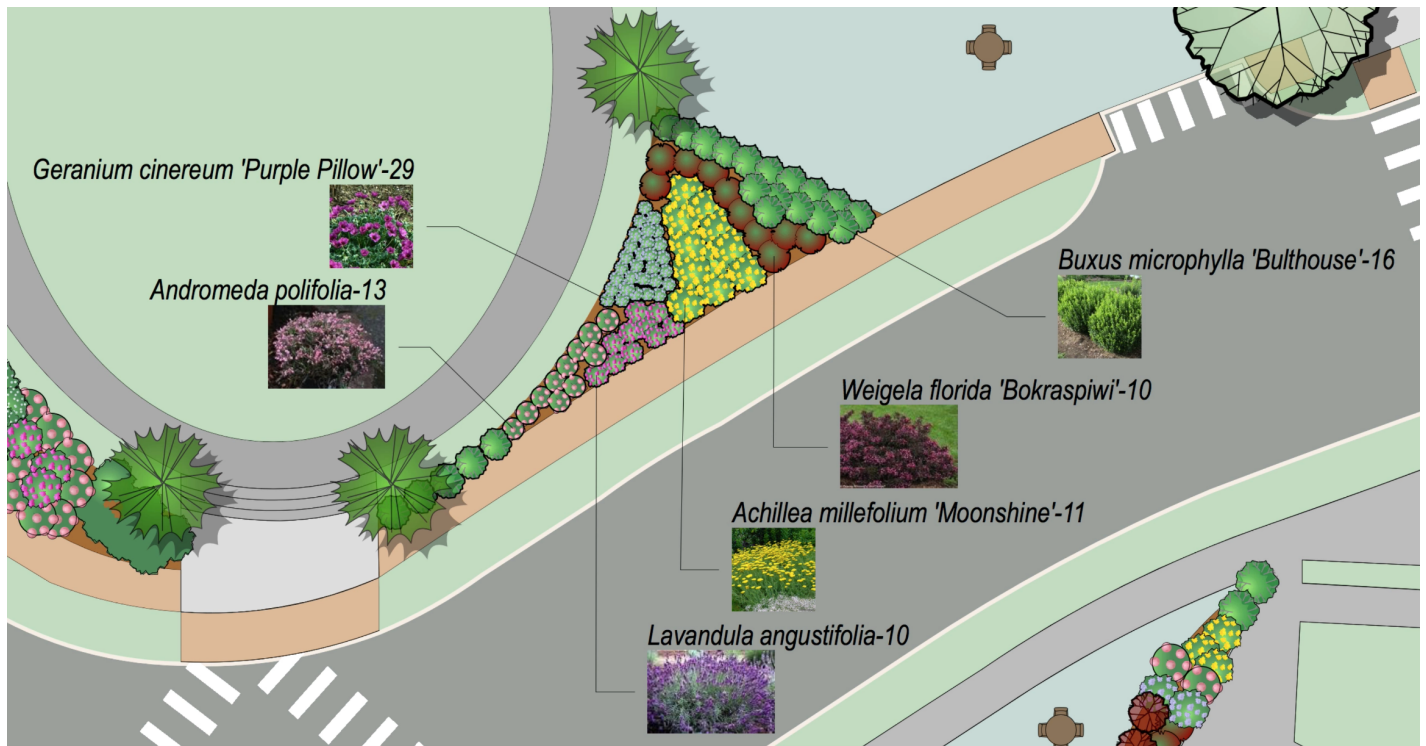


SITE DESIGN

PLANT TAG IMAGES

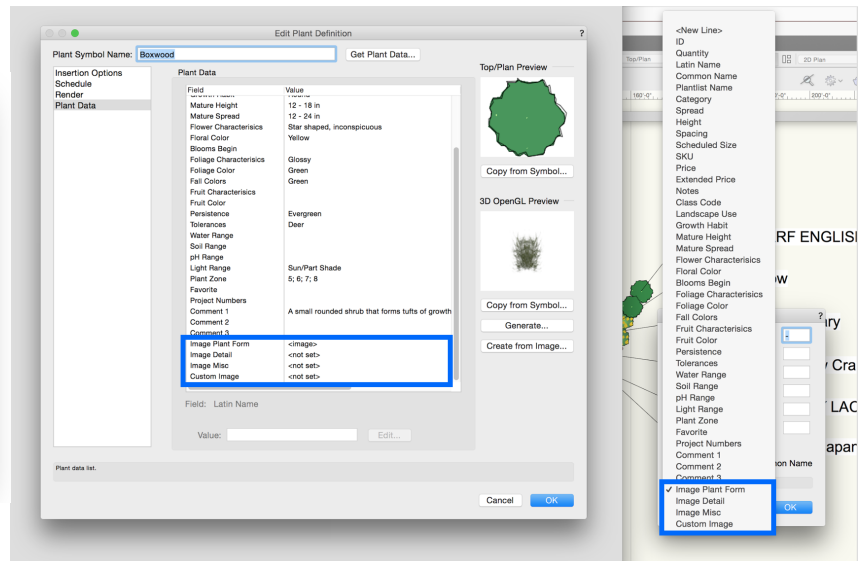
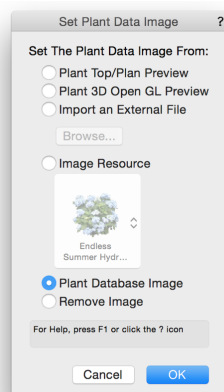
In Vectorworks 2018, you can now add detailed plant images to your plant tags. This allows for vibrant, illustrative plans for your clients or an easy to follow key for your planting plan. Utilizing the plant tagging function for plant objects, you can choose which image or images to display along with other data related to the plant.



To set one of the lines of the tag to an image, click on the tag drop down in the Object Info Palette and then choose set custom tag. At the bottom of the list, there are three new parameters for the images, which pull data from the plant definition or the plant database.

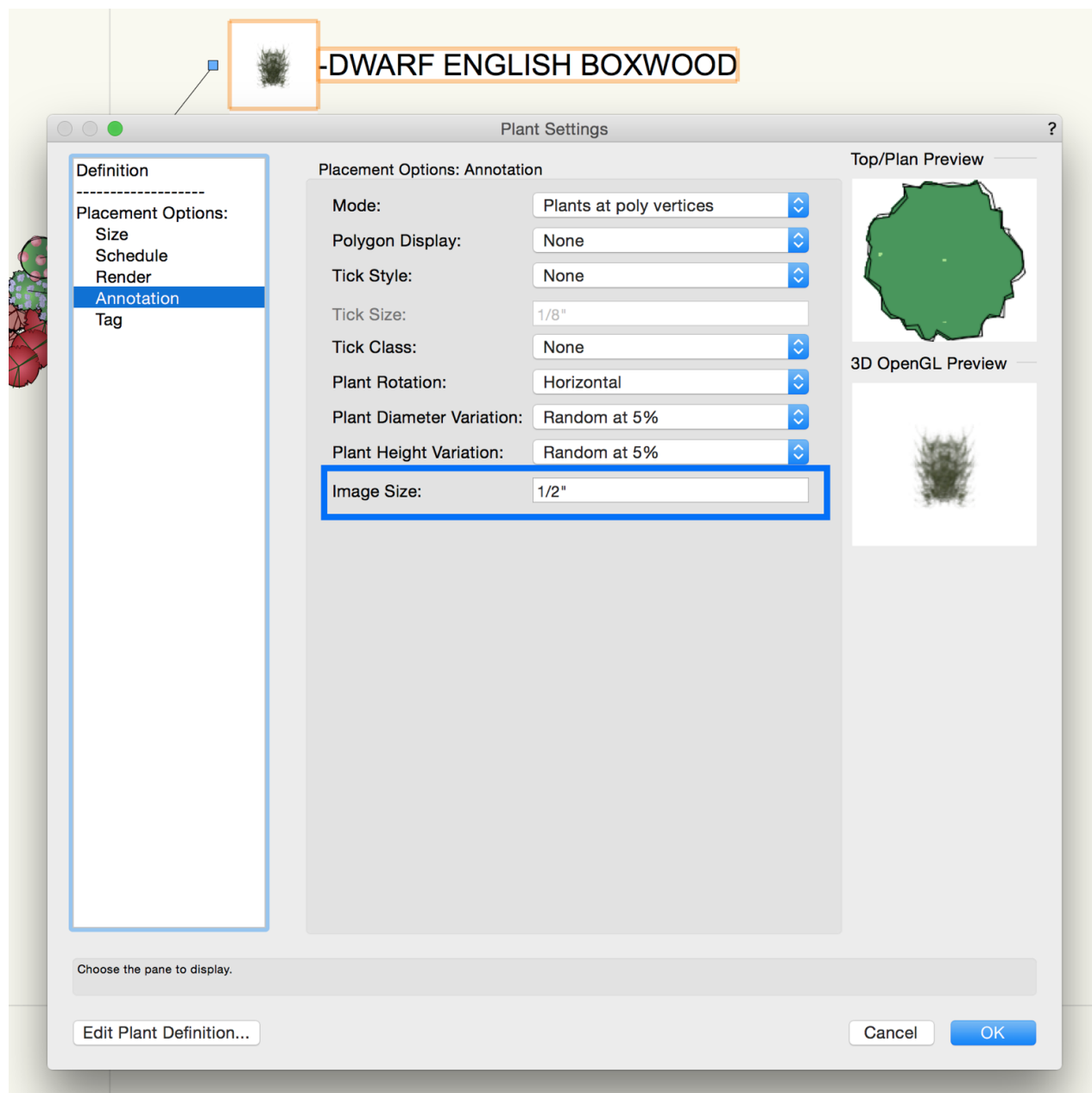
If the plant has an image or images in the database, you can choose the image. You can even choose to show a rendered 2D or 3D graphic representation to be displayed.

You can also import an external image or use an image resource from your document.



The Image value will show as Not Set if no image is available or has been selected. Click on the field and choose Set Image. By default, the plant database will update automatically when you choose an image in the plant definition. This can be turned off by unchecking the Update function in the Choose Plant Database Location dialog.

Once the image is shown on the plan, you can adjust the image size in the Plant Settings under Annotations.



If multiple images are used in the tag, they will all be the same size and be aligned appropriately. If you want to remove an image from the tag, edit the definition and choose Remove Image for the Image field.