

Quick Tips to Remember

- ◆ **The 15-50 rule:** Always stop between 15 and 50 feet before the nearest rail of a highway-rail crossing.
- ◆ **Always expect a train:** In Quiet Zones, train horns will not routinely sound.
- ◆ **If it won't fit, don't commit:** Know your truck length, and only proceed when you know you can fully clear the crossing.
- ◆ **In case of emergency:** Call the phone number on the blue Emergency Notification System (ENS) sign located on the crossbuck post or signal post and give the crossing number found on the sign to identify your location. If you cannot locate the ENS sign, call 911 or local police.



Driver Name

Driver License

Employee Number



Commercial Driver License Penalties at RR Crossings

1st conviction—driver is disqualified from driving for no less than 60 days.

2nd conviction—driver is disqualified from driving for no less than 120 days for second violation within any 3-year period.

3rd conviction—driver is disqualified from driving for no less than 1 year for third violation within any 3-year period.

1. F ; 2. T ; 3. F ; 4. T ; 5. T ; 6. F

Take the **ProDriver Challenge** - a "video game" format e-Learning program for professional drivers to make every crossing a safe one. For details, go to <http://oli.org/prodriver/>

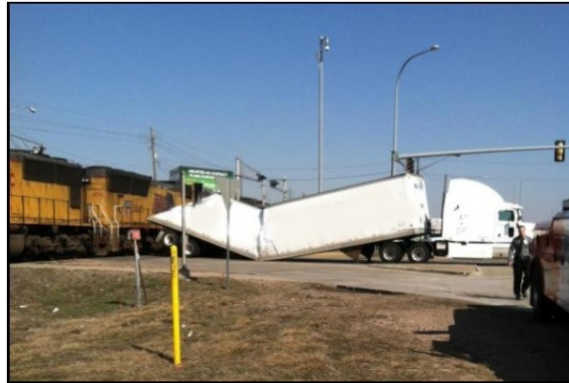
FOR PROFESSIONAL DRIVERS

Don't Lose Your License or Your Life At Railroad Crossings



As a professional driver, you violate federal regulations when:

- ◆ You are driving a commercial vehicle that is always required to stop [such as hazmat], but you fail to stop before driving onto the crossing.
- ◆ You are driving a commercial vehicle that is NOT required to always stop, but you fail to slow down and check that tracks are clear of an approaching train.
- ◆ You are driving a commercial vehicle that is NOT required to always stop, but you fail to stop before reaching the crossing if the tracks are not clear.



- ◆ You fail to have sufficient space to drive completely through the crossing without stopping.
- ◆ You fail to obey a traffic control device or the directions of an enforcement official at the crossing.
- ◆ You fail to negotiate a crossing because of insufficient undercarriage clearance.



Quick Test

Enter 'T' for true, 'F' for false

1. When driving a gasoline tanker, you don't have to stop at a RR crossing.
2. You must always obey law enforcement officers or traffic control devices at crossings.
3. Driving a non-hazmat load, you don't have to slow down and check for trains at a RR crossing.
4. It is your responsibility as a driver to ensure you can safely navigate through the crossing.
5. When the tracks at a crossing are not clear, you are always required to stop.
6. As long as your back axle is past the tracks, you are in the clear regardless of overhang.