

# PANDUIT®

building a smarter,  
united business foundation  
Connect. Manage. Automate.

May 16, 2013

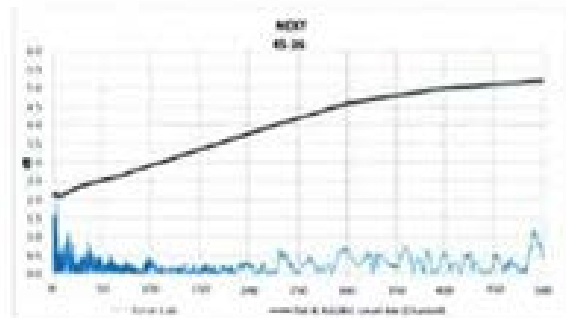
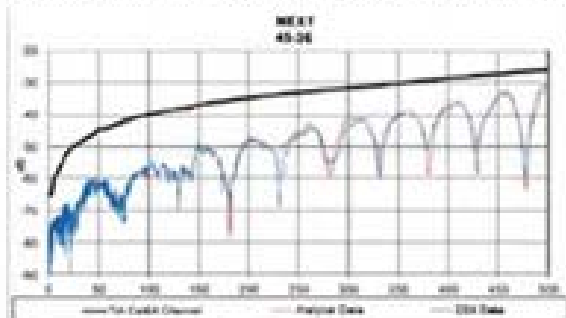
Fluke Networks  
6920 Seaway Boulevard  
Everett, WA 98203

Attention: Mr. Adrian Young  
Sr. Customer Support Engineer

Dear Adrian,

PANDUIT Corp. had completed its evaluation of the Fluke Networks Versiv DSX-5000 CableAnalyzer™.

Testing in our laboratory found a high degree of correlation between the test results obtained with this field tester and the laboratory Network Analyzer as shown below:



PANDUIT is pleased to endorse and recommend the DSX-5000 Cable Analyzer by Fluke Networks for use in field-testing for PANDUIT's copper connectivity solutions with the following requirements:

- Permanent link testing with DSX-PLA004 test leads,
- Channel testing with DSX-CHA004 test leads,
- Alien Crosstalk testing with either DSX-CHA004 or DSX-PLA004 test heads/leads
- Firmware revision 2.00 or higher.

PANDUIT also accepts the test results provided with this tester for all of PANDUIT's warranty programs.

Sincerely,

Engineering Lab Manager  
Phone (708) 460-1800 Ext: 86628