
Cable ID	Summary	Test Limit	Length	Headroom	Date / Time
FIBER SAMPLE-02A	PASS	TIA-568.3-D Multimode	51.9 m	0.35 dB (Loss Value)	04/14/2017 09:40 AM

Total Length:	51.9 m
Number of Reports:	1
Number of Passing Reports:	1
Number of Failing Reports:	0
Number of Warning Reports:	0
Documentation Only:	0



Cable ID: FIBER SAMPLE-02A

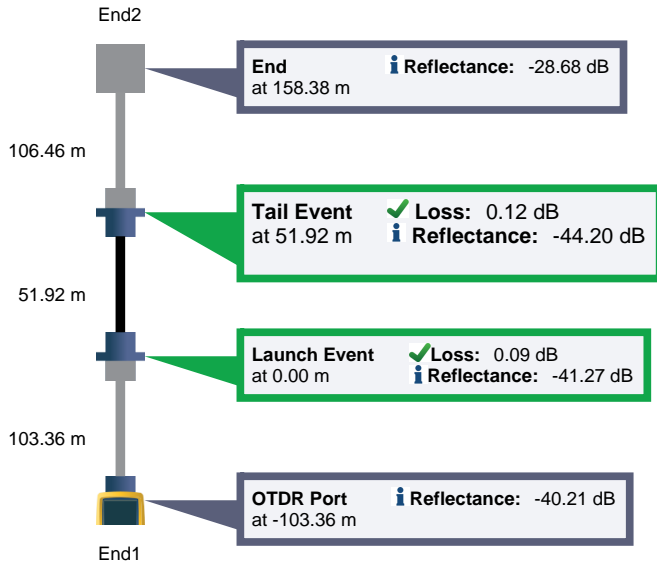
Date / Time: 04/14/2017 09:40:49 AM n = 1.482000 (850 nm)
 Cable Type: OM3 Multimode 50 n = 1.477000 (1300 nm)
 Backscatter Coefficient: -68.0dB (850 nm) Backscatter Coefficient: -75.8dB (1300 nm)

Test Summary: PASS

Modal Bandwidth: 2000MHz-km (850 nm)
 Modal Bandwidth: 500MHz-km (1300 nm)

OTDR Bidir. Avg. EventMap

Fiber Length: 51.92 m
Overall Loss: 0.34 dB



OTDR Bidir. Avg. PASS

Test Limit: ANSI/TIA-568.3-D
 Limits Version: 5.0
 Date / Time: 04/12/2017 03:26:03 PM
 Operator: FNET FIBER GURU
 Versiv
 S/N: 1846001
 Software Version: V5.0 Build 3
 Module: OptiFiber Pro (OFF-QUAD)
 S/N: 1820012
 Calibration Date: 12/01/2011

Launch + Tail
 Launch/Tail Type: Multimode
 Launch Length : 103.36 m
 Tail Length : 106.46 m
 Compensation Date: 04/12/2017 03:08 PM

SmartLoop (Auto)	850 nm	1300 nm
Range (Auto)	267 m	268 m
Resolution (Auto)	0.03 m	0.03 m
Pulse Width (Auto)	3 ns	3 ns
Averaging Time (Auto)	1 s	7 s
Loss Threshold (Auto)	0.10 dB	0.10 dB
End Threshold (Auto)	0.00 dB	0.00 dB

Measurements	Status	850 nm		1300 nm	
		Value	Limit	Value	Limit
Overall Length (m)	PASS	51.92	2000.0		
Overall Loss (dB)		0.34		0.26	
ORL (dB)		39.59		45.90	
Events					
158.38 m End					
Reflectance (dB)		-28.68		-38.48	
Attn Coeff. (dB/km)		2.43		0.40	
51.92 m Tail Event	PASS				
Loss (dB)		0.11	0.75	0.12	0.75
Reflectance (dB)		-44.20		-48.07	
Attn Coeff. (dB/km)		3.38		1.33	
0.00 m Launch Event	PASS				
Loss (dB)		0.06	0.75	0.09	0.75
Reflectance (dB)		-41.27		-47.45	
Attn Coeff. (dB/km)		2.66		0.46	



Cable ID: FIBER SAMPLE-02A

Date / Time: 04/14/2017 09:40:49 AM n = 1.482000 (850 nm)
 Cable Type: OM3 Multimode 50 n = 1.477000 (1300 nm)
 Backscatter Coefficient: -68.0dB (850 nm) Backscatter Coefficient: -75.8dB (1300 nm)

Test Summary: PASS

Modal Bandwidth: 2000MHz-km (850 nm)
 Modal Bandwidth: 500MHz-km (1300 nm)

OTDR Bidir. Avg. PASS

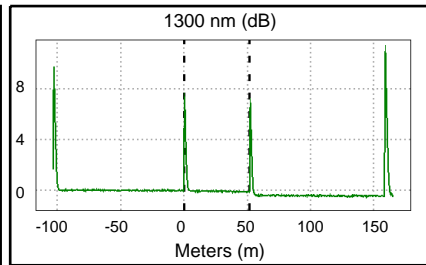
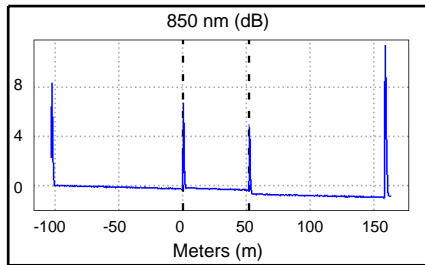
Measurements	Status	850 nm		1300 nm	
		Value	Limit	Value	Limit
Events					
-103.36 m OTDR Port Reflectance (dB)		-40.21		-43.09	

OTDR End1

Test Limit: ANSI/TIA-568.3-D
 Limits Version: 5.0
 Date / Time: 04/12/2017 03:25:37 PM
 Operator: FNET FIBER GURU
 Versiv
 S/N: 1846001
 Software Version: V5.0 Build 3
 Module: OptiFiber Pro (OFF-QUAD)
 S/N: 1820012
 Calibration Date: 12/01/2011

Launch + Tail
 Launch/Tail Type: Multimode
 Launch Length : 103.36 m
 Tail Length : 106.46 m
 Compensation Date: 04/12/2017 03:08 PM

SmartLoop (Auto)	850 nm	1300 nm
Range (Auto)	267 m	268 m
Resolution (Auto)	0.03 m	0.03 m
Pulse Width (Auto)	3 ns	3 ns
Averaging Time (Auto)	1 s	7 s
Loss Threshold (Auto)	0.10 dB	0.10 dB
End Threshold (Auto)	0.00 dB	0.00 dB

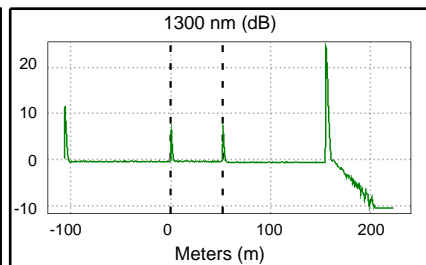
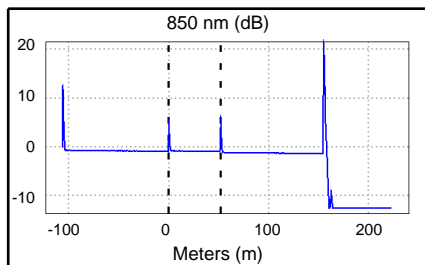


OTDR End2

Test Limit: ANSI/TIA-568.3-D
 Limits Version: 5.0
 Date / Time: 04/12/2017 03:26:03 PM
 Operator: FNET FIBER GURU
 Versiv
 S/N: 1846001
 Software Version: V5.0 Build 3
 Module: OptiFiber Pro (OFF-QUAD)
 S/N: 1820012
 Calibration Date: 12/01/2011

Launch + Tail
 Launch/Tail Type: Multimode
 Launch Length : 106.56 m
 Tail Length : 103.01 m
 Compensation Date: 04/12/2017 03:08 PM

SmartLoop (Auto)	850 nm	1300 nm
Range (Auto)	330 m	330 m
Resolution (Auto)	0.03 m	0.03 m
Pulse Width (Auto)	3 ns	3 ns
Averaging Time (Auto)	1 s	7 s
Loss Threshold (Auto)	0.10 dB	0.10 dB
End Threshold (Auto)	0.00 dB	0.00 dB





Cable ID: FIBER SAMPLE-02A

Test Summary: PASS

Date / Time: 04/14/2017 09:40:49 AM n = 1.482000 (850 nm)
 Cable Type: OM3 Multimode 50 n = 1.477000 (1300 nm)
 Backscatter Coefficient: -68.0dB (850 nm) Backscatter Coefficient: -75.8dB (1300 nm)

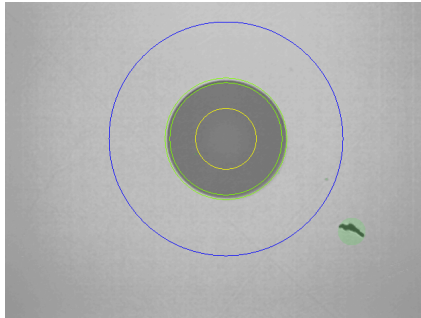
Modal Bandwidth: 2000MHz-km (850 nm)
 Modal Bandwidth: 500MHz-km (1300 nm)

Endface Image End1

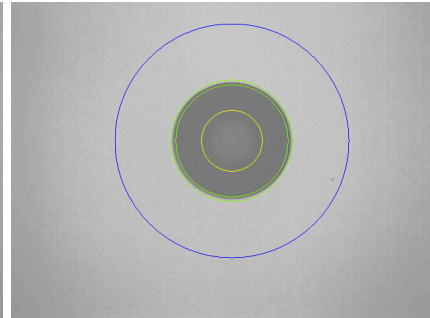
PASS

Test Limit: IEC 61300-3-35 ED.1 MM
 Limits Version: 5.0
 Date / Time: 04/12/2017 02:52:35 PM
 Operator: FNET FIBER GURU
 Versiv
 S/N: 1846001
 Software Version: V5.0 Build 3

End1



End2



Endface Image End2

PASS

Test Limit: IEC 61300-3-35 ED.1 MM
 Limits Version: 5.0
 Date / Time: 04/14/2017 07:07:15 AM
 Operator: FNET FIBER GURU
 Versiv
 S/N: 1846001
 Software Version: V5.0 Build 3

Loss (R->M)

PASS

Test Limit: TIA-568.3-D Multimode
 Limits Version: 5.0
 Date / Time: 04/14/2017 09:40:49 AM
 Operator: FNET FIBER GURU
 Main: Versiv
 S/N: 1846001
 Software Version: V5.0 Build 3
 Module: CertiFiber Pro (CFP-QUAD)
 S/N: 2416002
 Calibration Date: 09/25/2013
 Remote: Versiv
 S/N: 2335073
 Software Version: V5.0 Build 3
 Module: CertiFiber Pro Remote (CFP-QUAD)
 S/N: 2401013
 Calibration Date: 09/25/2013

Propagation Delay (ns)	263	
Length m	53.4	PASS
Limit 2000.0		
	850 nm	1300 nm
Result	PASS	PASS
Loss (dB)	0.35	0.33
Limit (dB)	0.76	0.68
Margin (dB)	0.41	0.35
Reference (dBm)	-24.42	-24.65

Connector Type: LC
 Patch Length1 (m): 2.0
 Reference Date: 04/14/2017 09:36:44 AM
 1 Jumper

Compliant Network Standards:

- | | | |
|----------------------------|-----------------------------|-----------------------------|
| 10/100BASE-SX | 1000BASE-LX | 1000BASE-SX |
| 100BASE-FX | 100GBASE-SR10 | 100GBASE-SR4 |
| 10BASE-FL | 10GBASE-LRM | 10GBASE-LX4 |
| 10GBASE-SR | 40GBASE-SR4 | ATM155 |
| ATM155SWL | ATM52 | ATM622 Fiber Optic |
| ATM622SWL Fiber Optic | FDDI Fiber Optic | Fibre Channel 100-M5-SN-I |
| Fibre Channel 100-M5E-SN-I | Fibre Channel 1200-M5-SN-I | Fibre Channel 1200-M5E-SN-I |
| Fibre Channel 133 | Fibre Channel 1600-M5E-SN-I | Fibre Channel 200-M5-SN-I |
| Fibre Channel 200-M5E-SN-I | Fibre Channel 266 | Fibre Channel 266SWL |
| Fibre Channel 400-M5-SN-I | Fibre Channel 400-M5E-SN-I | Fibre Channel 800-M5E-SN-I |