

MET/CONNECT 2.1.1 INSTALLATION GUIDE

This document includes information related to installing MET/CONNECT 2.1.1 and MET/CAL 11.0.0.

MET/CONNECT provides a way to use MET/CAL without requiring the overhead of the MET/TEAM asset management software via a simple API that allows CMMS systems to connect and extract calibration results from MET/CAL procedure runs or a direct data file export.

THINGS TO CONSIDER BEFORE INSTALLING MET/CONNECT

1. Ensure you meet the system requirements:
 1. Windows 10 or Microsoft Windows Server 2012 R2 or later, 64-bit Operating Systems
 2. SQL Server 2016 or later
2. You must have an existing SQL Server instance installed before attempting to install MET/CONNECT Server. You can download the Express versions for free from Microsoft:
 1. SQL Server 2016 Express: <https://www.microsoft.com/en-us/download/details.aspx?id=56840>
 2. SQL Server 2017 Express: <https://www.microsoft.com/en-us/download/details.aspx?id=55994>
 3. SQL Server 2019 Express: <https://www.microsoft.com/en-us/download/details.aspx?id=101064>

Note: MET/CONNECT has not been tested on SQL Server 2022 Express or later versions.

INSTALLING MET/CONNECT SERVER AND API

This release of MET/CONNECT Server can be used to set up new systems as well as update a previous release of MET/CONNECT Server. Follow the appropriate set of instructions below to complete the installation process.

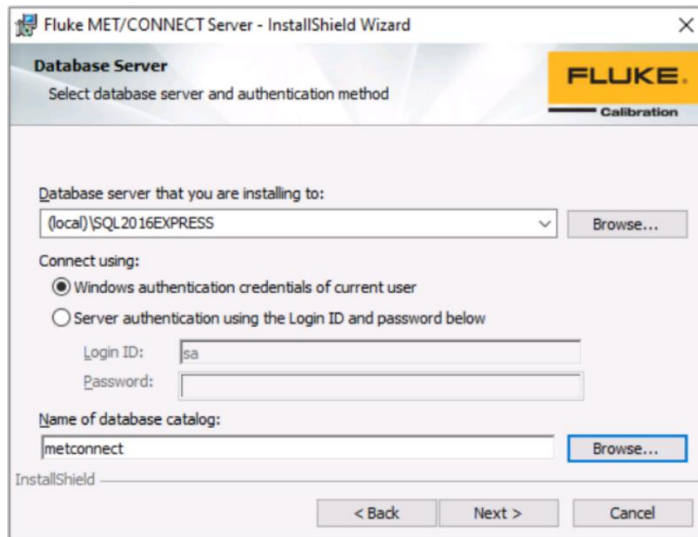
For both new installations and upgrades:

1. Extract the contents of the MET/CONNECT Server Installer zip file to a local temporary directory.
2. Review the MET/CONNECT Readme file and ensure you have all the prerequisites installed.
3. When you are ready to proceed, run the Setup.exe file.
4. Depending on your security settings, you may receive a warning about unrecognized software. Select "Run anyway"
5. You will be prompted to install prerequisites for MET/CONNECT Server. Select Install and wait for the prerequisite installations to complete.

For new installations only:

1. On the Welcome dialog, click Next.
2. Review the License Agreement, select accept, and click Next.
3. Browse for the SQL Server instance that you want to use for the main MET/CONNECT database (this should have been installed before starting the installation process). Enter credentials if required. Enter

your desired database name and click Next.



4. The installer will verify the connection to the database. Click Install.
5. The installer will configure two websites in IIS, one for the MET/CONNECT Service on port 6382 and one for the MET/CONNECT API on port 6381 (if either of these ports is already in use, a new port will be selected). It will also set up the MET/CONNECT database, configure the MET/CONNECT shared directory (which contains the Help files, the MET/CAL Client installer files and the MET/CONNECT Mobile installer files) and the MET/CAL shared directory (which contains the MET/CAL shared files). It also configures the Windows Firewall to enable connections to the two ports noted above.
6. A message is displayed indicating the location of the MET/CAL Client installer files for setting up MET/CAL workstations.
7. The installer will save a text file to the desktop of the PC/Server with the authentication key (serial number) for the MET/CONNECT API.
8. Click Finish to close the installer.

For update installations only:

1. A message is displayed indicating an upgrade will be performed. Setup will attempt to locate the existing installation of MET/CONNECT and gather some information.

NOTE: When upgrading from a previous version, you should back up the MET/CAL shared files in order to prevent losing any customized files!

2. On the Welcome dialog, click Next.
3. Review the License Agreement, select accept, and click Next.

4. Select the appropriate option and/or credentials for accessing SQL Server on the Database Server dialog and click Next.
5. Click Install to begin the update.
6. The installer will update the MET/CONNECT Service, MET/CONNECT API, MET/CAL Client installer files and MET/CAL shared files as necessary for this release and deploy the MET/CONNECT Mobile installer files.
7. A message is displayed as a reminder to run the latest MET/CAL Client installer on each MET/CAL workstation.
8. Click Finish to close the installer.

INSTALLING MET/CAL RUNTIME AND EDITOR PREREQUISITES

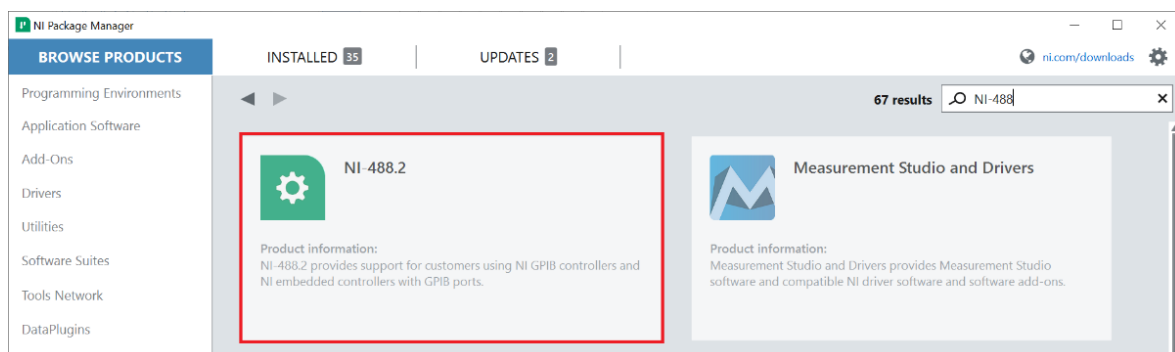
The instrument communication libraries in MET/CAL version 11.0.0 have been updated to use the National Instruments NI-488.2 and NI-VISA drivers. The MET/CAL Client installer performs a check to ensure these drivers are installed on the workstation. A warning message will appear either of these drivers is not installed. The installation is allowed to proceed but MET/CAL cannot be run until these drivers are installed. A similar check and message will be displayed by MET/CAL if these drivers are not installed, and MET/CAL will terminate immediately.

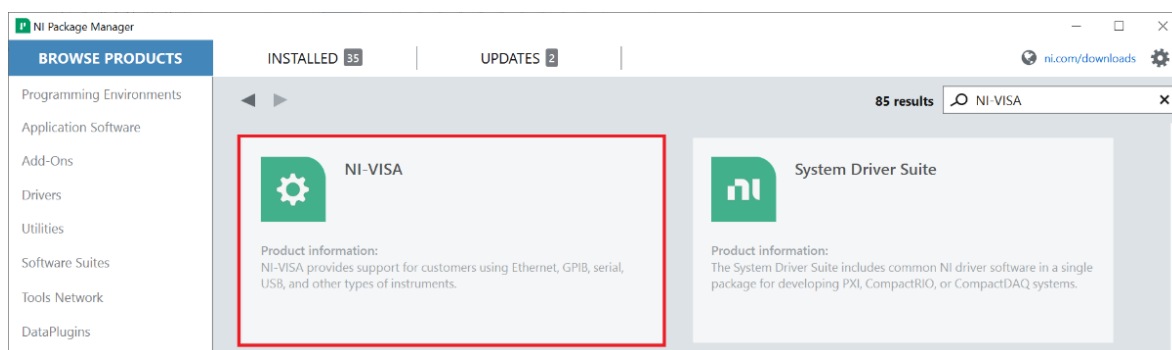
To manage the installation of the National Instruments drivers, download and install the latest NI Package Manager software:

<https://www.ni.com/en/support/downloads/software-products/download.package-manager.html#322516>

Once the NI Package Manager is installed, launch it and select the BROWSE PRODUCTS tab. Locate and select the following items using the Search feature:

- **NI-VISA** - MET/CAL requires version 17.5 or later
- **NI-488.2** – MET/CAL requires version 17.6 or later

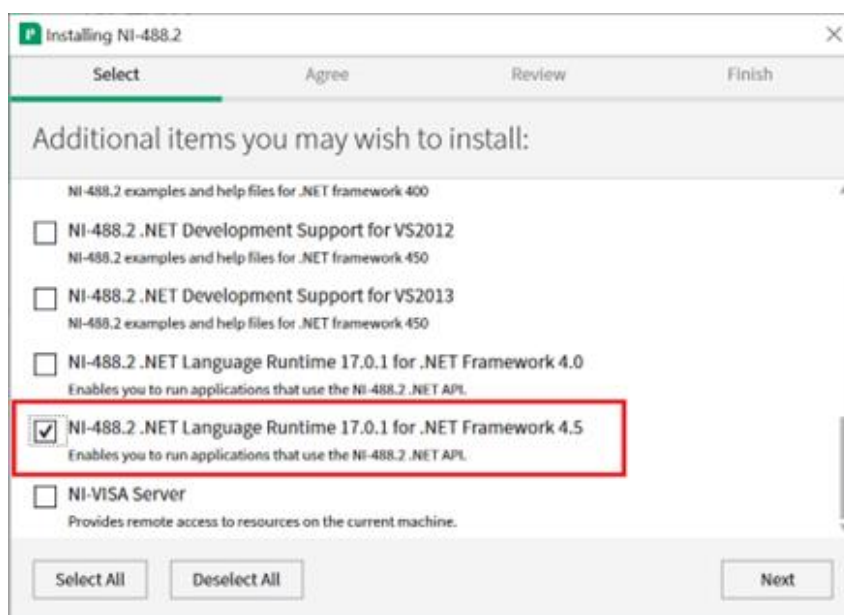




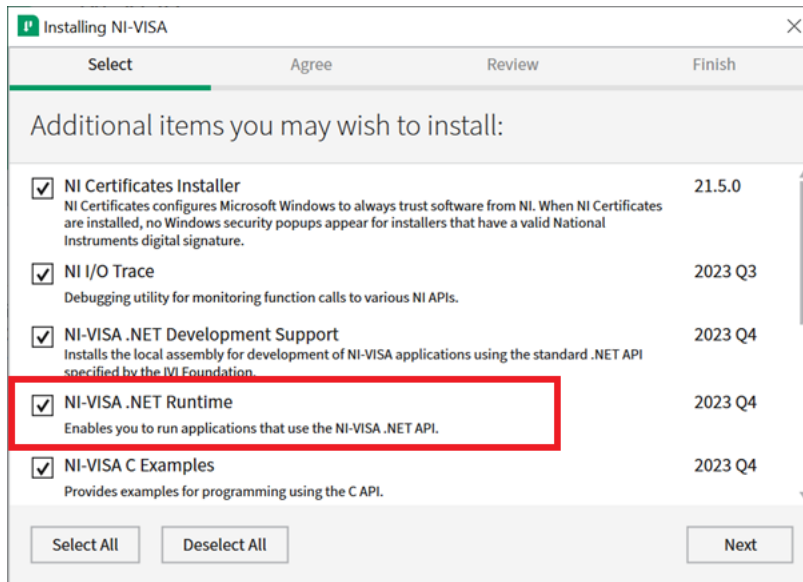
It is recommended to install the latest available version of each driver.

During driver installation, you may use the default component selections, with one exception:

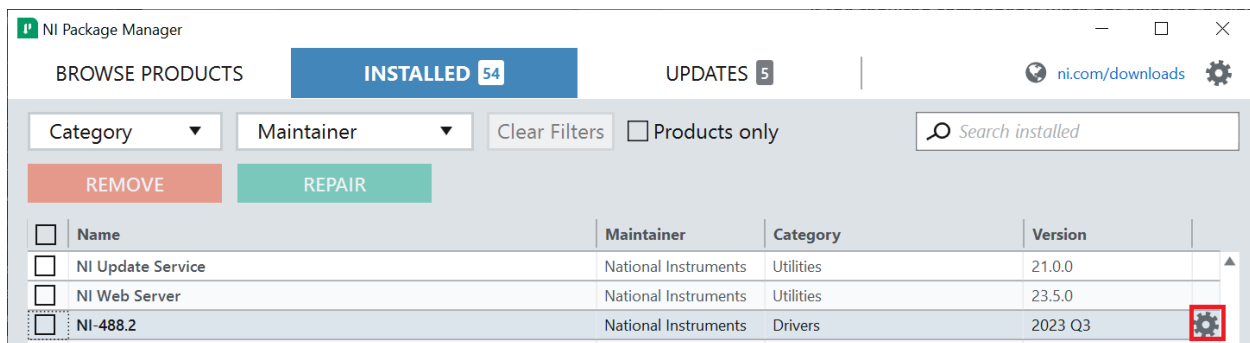
- For the NI-488.2 driver, be sure the "NI-488.2 .NET Language Runtime 17.0.1 for .NET Framework 4.5" component is selected (the name may vary slightly from one driver version to another). This component is automatically selected in the latest version, but it needs to be manually selected on most older versions. Failing to select this component will cause MET/CAL to not detect the installation of the driver, resulting in the warning message on startup. In this case, either upgrade to a newer version of the driver, or uninstall the current driver and re-install it, selecting the required component during installation.



- For the NI-VISA driver, be sure the "NI-VISA .NET Runtime" component is selected. This component should be selected by default. Failing to select this component will cause MET/CAL to not detect the installation of the driver, resulting in the warning message on startup. In this case, either upgrade to a newer version of the driver, or uninstall the current driver and re-install it, selecting the required component during installation, or add it from the NI Package Manager by clicking the gear icon on the NI-VISA item in the Installed list.

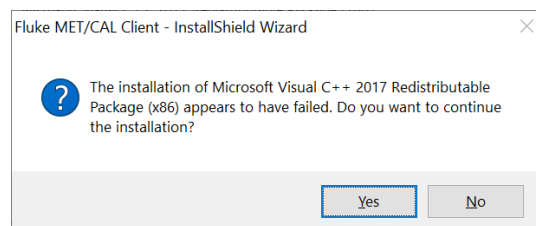


If the required components were not selected during the initial driver installation, select the INSTALLED tab and click the gear icon that appears in the right-most column when hovering over the appropriate row in the grid. This will launch the installer for that driver and allow components to be selected/deselected.

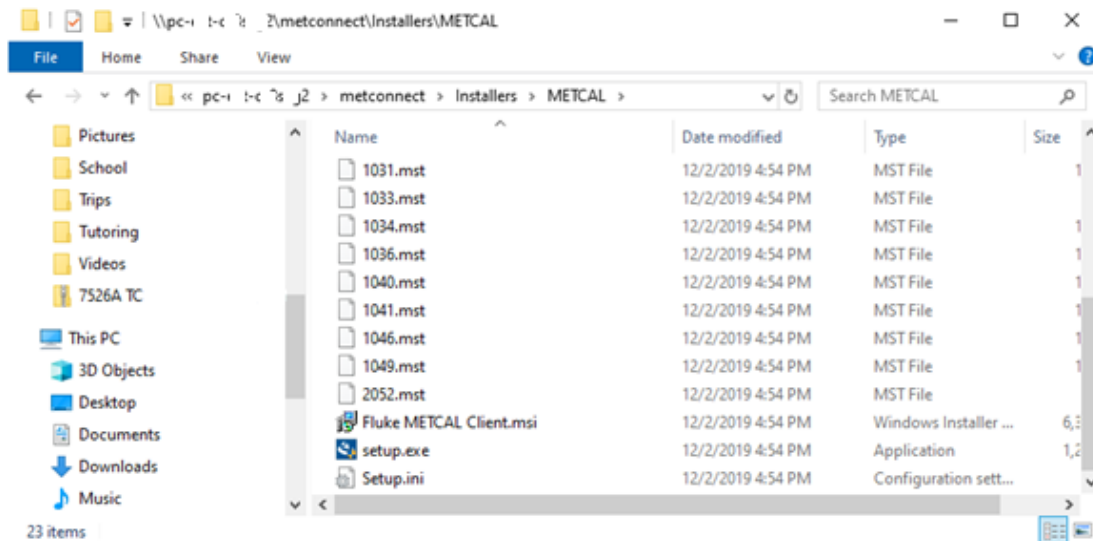


INSTALLING MET/CAL RUNTIME AND EDITOR

Note: When running the MET/CAL Client installer, you may receive a warning message regarding the Microsoft Visual C++ 2017 Redistributable Package. This message is an indication that the package has already been installed on the workstation and it may be ignored. Click **Yes** to continue.



1. Go to the MET/CAL installer directory on the MET/CONNECT share (by default under \\<server_name>\metconnect\Installers\METCAL).



2. Run setup.exe.
3. Click Yes on any Allow this app to make changes... pop-ups.
4. Choose English as the preferred language. The current version only supports English.
5. If updating a previous version of MET/CAL, simply follow the installation dialogs, and accept the License Agreement to complete the update.
6. The Fluke MET/CAL Installation Wizard will now open. Click Next.
7. On the License Agreement dialog, click I Accept, then Next.
8. On the Select Language dialog, click Next.
9. You will be prompted to select whether to install the MET/CAL Runtime and/or Editor. Make your selections and click Next.
10. On the Select Settings dialog, enter the name you would like to be listed as the procedure author in the box, then click Next.
11. On the Shared Files dialog, you have a choice:
 - a. If you are installing MET/CAL on the same computer where the MET/CONNECT Server is installed, you leave the path to the local drive and click Next.
 - b. If MET/CONNECT is on a different computer, you need to select the METCAL network share that was created on the MET/CONNECT computer. If your shared directory is not already mapped to a drive on a client PC, you can use the Map Drive Letter button to configure a mapped drive for the installer to continue.

12. On the Ready to Install the Program dialog, click Install.
13. Several dialogs may pop-up and close during the installation. This is normal.

Note: If the MET/CAL Editor was selected for installation, the Microsoft Visual Studio 2015 Shell (Isolated) and Microsoft Visual Studio 2015 Update 3 prerequisites will be installed. These prerequisites may take a significant amount of time to install.

14. Click Finish when the InstallShield Wizard Complete dialog is displayed.

When updating MET/CONNECT Server to a later version, be sure to run the MET/CAL Client installer to update MET/CAL to the latest version also. The MET/CONNECT Server installer will deploy the latest MET/CAL Client installer files to the shared folder.

INSTALLING MET/CONNECT MOBILE

If you wish to use the MET/CONNECT Mobile feature, which allows you to use MET/CAL while being disconnect from the network (offline), follow the instructions below on each MET/CAL workstation that you want to use this way.

1. Install SQL Server on the workstation. It is recommended (but not required) to use the same version of SQL Server as is being used on the server.
2. Make sure MET/CAL has been installed on the workstation.
3. Go to the MET/CONNECT Mobile installer directory on the MET/CONNECT share (by default under \\<server_name>\metconnect\Installers\Mobile).
4. Run Setup.exe.
5. Depending on your security settings, you may receive a warning about unrecognized software. Select "Run anyway"
6. You will be prompted to install prerequisites for MET/CONNECT Mobile. Select Install and wait for the prerequisite installations to complete.
7. On the Welcome dialog, click Next.
8. Review the License Agreement, select accept, and click Next.
9. Browse for the local SQL Server instance. Enter credentials if required. Enter your desired database name and click Next.
10. The installer will verify the connection to the database. Click Install.
11. The installer will configure two local websites in IIS, one for the MET/CONNECT Service Mobile on port 2836 and one for the MET/CONNECT API Mobile on port 1836 (if either of these ports is already in use, a new port will be selected). It will also set up the mobile MET/CONNECT database.

12. The installer will save a text file to the desktop of the workstation with the authentication key (serial number) for the MET/CONNECT API Mobile on this workstation.

13. Click Finish to close the installer.

When updating MET/CONNECT Server to a later version, be sure to run the MET/CONNECT Mobile installer to update the workstation to the latest version also. The MET/CONNECT Server installer will deploy the latest MET/CONNECT Mobile installer files to the shared folder.

Your installation is now complete!

Have any questions or issues?

Web support: <http://support.flukecal.com>

To submit a question, click Submit a Request on that support page.