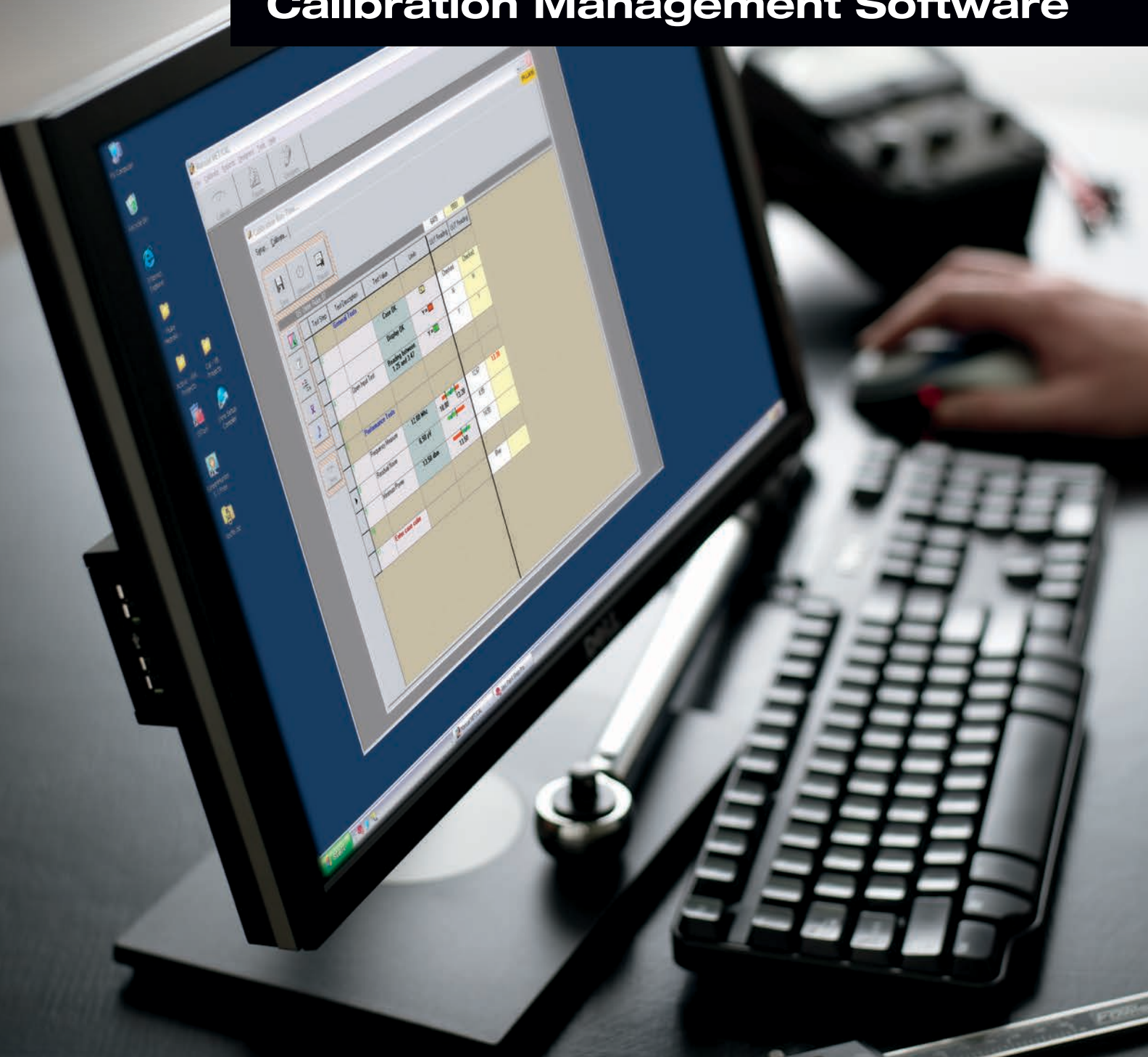


FLUKE®

Calibration

Manual MET/CAL® Calibration Management Software



**The easy, efficient way to collect,
store and report calibration data**



Customers say...

"With manual MET/CAL I can create a manifold and plug in 100 transducers if I want to, and take 100 data points at a time. So now instead of doing one cal, I'm doing ten cal's or 15 cal's or whatever I want to do. Absolutely a lot less hands-on."

"Productivity is a big deal. I have a limited staff. I have a fixed bottom-line contract. I've got to optimize."

Customers say...

"In the real world you're out in the grunge and you're doing liquid flow calibrations and gas flow calibrations and deadweight calibrations, pressure calibrations—a lot of mechanical stuff. This is where Manual MET/CAL comes into play. You're doing a multi-channel temperature calibration, and instead of having to do one channel at a time—most of them are 16-channel modules—it's one simulation, 16 outputs, 16 records. Badda boom, badda bing—you're done."



Manual MET/CAL software provides all the tools you need to calibrate:

- Dimensional and mechanical instruments
- Machine tools
- Mass, force, density, and hardness
- Torque gages and tools
- Multiple instruments at once (batch calibration)
- ...and much more

Boost cal lab productivity with Manual MET/CAL® software

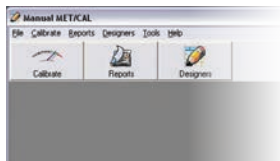
Manual MET/CAL software is an application for calibration professionals who calibrate much of their workload manually and need to collect, store and report calibration data consistently and efficiently.

This application is also useful for MET/CAL *Plus* software users who need an easy way to collect and manage calibration data for instruments that cannot be automated via IEEE connection, such as dimensional instruments.

Manual MET/CAL provides all the tools you need to:

- Quickly and easily create, edit, test and run calibration procedures
- Input calibration test data into your computer—no more spreadsheets or paper and pencil
- Capture measurement uncertainty and TUR values
- Perform batch calibrations
- Calibrate instruments which have separate input and output values, such as transducers
- Put a calibration into hibernation, then come back and finish it later
- Save calibration results into a database
- Run all calibration reports and certificates using Crystal Reports
- ...and more

Easy to learn and use



With Manual MET/CAL software you can be up and running quickly. The methodology is similar to that used in well known GIDEP (Government-Industry Data Exchange Program) and NAVAIR (Naval Air Systems Command) calibration methods, so it will be familiar to many calibration professionals.

To perform a calibration, just open a datasheet and follow the procedure. As each test step is completed, enter the test values into the datasheet. When the test is complete, save the results and, if desired, print a calibration report. It's that simple.

One asset manager for all your calibration assets

Manual MET/CAL software stores data in the same MET/BASE database used by the MET/CAL® *Plus* Calibration Management system. MET/BASE features a powerful SQL database server—SQL Anywhere from Sybase—for secure, dependable storage of calibration and asset data. It's compatible with the Microsoft Open Database Connectivity (ODBC) standard so you can exchange data to and from any ODBC-compatible application (such as Microsoft® Excel or Word) for further processing and analysis.

Manual MET/CAL is compatible with the MET/TRACK® asset management application that lets you manage inventory, calibration location, maintenance and customers. MET/TRACK delivers flexibility, power, and security that is not available in generic database applications. And it supports the traceability and record-keeping requirements of quality and accreditation standards, including ISO/IEC 17025, ISO 9000, QS 9000, EN 45000, ANSI Z540, and MIL STD 45662A.

Data security you can count on

Manual MET/CAL software is a secure system that requires both a user ID and a password for operation. Five levels of security, from “read only” to “system manager,” ensure that only authorized users gain access to the data.

Getting started is a snap

Manual MET/CAL software uses datasheets—electronic forms with rows and columns like a spreadsheet—to help you collect and record calibration readings and values during a calibration. A datasheet includes one or more rows that describe each test to be done.

Creating datasheets is easy and fast. Wizards help you perform tasks such as calculating limits or generating a sequence of tests over a range of test values. “Hotkeys” provide shortcuts for common functions such as inserting a new row, duplicating a row, duplicating a test on a new row and multiplying the values by 10, and more.

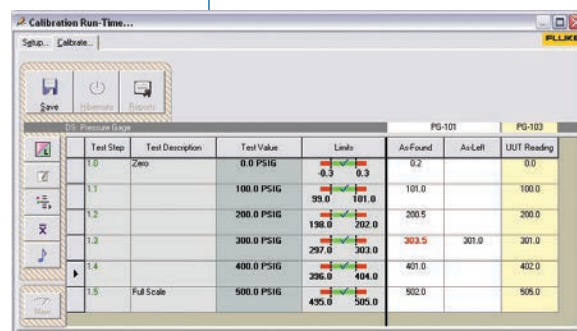
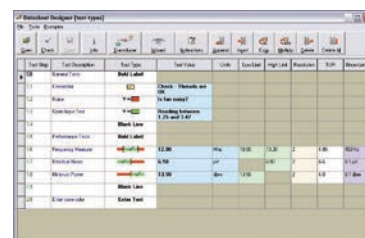
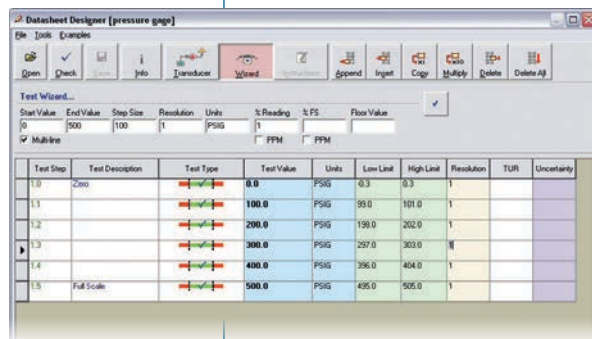
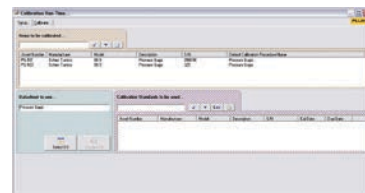
Manual MET/CAL software also includes an Instruction Designer that lets you create step-by-step instructions for a calibration procedure in a familiar word processing environment. You can also create instructions in another word processing application, such as Microsoft Word, then cut and paste the information into the Instruction Designer. Files in .txt or .rtf format can be imported directly.

A check function lets you ensure that the datasheet has been created properly before saving it to the datasheet library. Each datasheet name must be unique. An optional mode lets you require a unique name for the combination of name plus manufacture plus model. This lets you assign a generic datasheet to multiple instrument models.

Perform calibrations consistently and efficiently

Manual MET/CAL includes many features that help even less experienced technicians perform calibrations correctly. Each column in the datasheet is labeled clearly, so it's easy to see where to put the test information. It's also easy to view step-by-step instructions and checklists. You can view the instructions and even the user manual while running the calibration.

If a test reading is found to be out of tolerance, it is displayed in red. If the problem can be corrected during the calibration, Manual MET/CAL software can capture the as-left data. A Notes feature lets you record notes or comments about a test. A hibernation feature lets you pause a calibration and restart it at a later time. This feature is useful for calibrating items like thread gage sets, which may take longer than a single workday to calibrate.



Customers say...

“It’s nice being able to import the calibration procedures into the data sheet. The technician doesn’t have to pull a manual out of a bookshelf somewhere. It’s really a procedure AND data sheet generator.”

“We do approximately 19,000 cals a year. At least two thirds of it is mechanical and done using Manual MET/CAL. We don’t have very many people, so productivity is extremely important.”



Customers say...

"If you're doing ten devices per setup, you're basically saving 90 percent of the time."

"No more paper or pencil, that's big. Performing batch calibrations, that's bigger."

"Sometimes you get to the end of the day, you want to come back and finish the job tomorrow."

Create and print reports

Manual MET/CAL uses Crystal Reports, which makes it easy to create custom reports, lists, and labels. Several standard reports are included. Use them right out of the box, or use them as templates to create customized reports.

You can also use the Custom Results Viewer to view and compare calibration results data. Several standard views are included, or you can create your own custom view.

Minimum system requirements

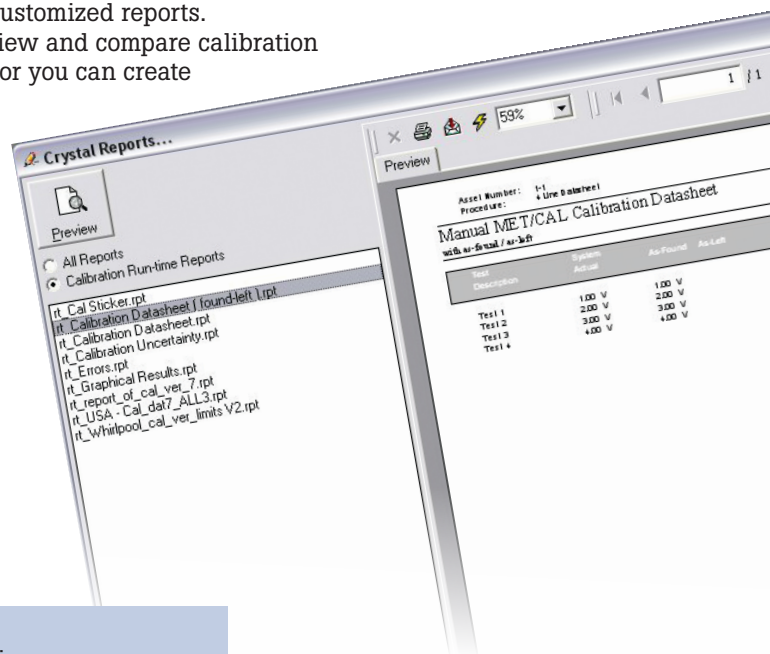
Operating System: Microsoft XP or later

Hard Disk: 5 MB of free memory or greater

Monitor: 1024 x 768 or larger recommended
MET/BASE and MET/TRACK® software need to be installed and working on the client workstation.

Additional requirements for use

Manual MET/CAL License



Ordering information

Manual MET/CAL-L Manual MET/CAL Calibration Software License

MET/BASE-7 Calibration Software Database System. One or more Manual MET/CAL licenses required for use.

MET/CAL-L License disk for MET/CAL

MET/TRACK-L License disk for MET/TRACK

Fluke Calibration. Precision, performance, confidence.™

Electrical	RF	Temperature	Pressure	Flow	Software
------------	----	-------------	----------	------	----------

Fluke Calibration
PO Box 9090, Everett, WA 98206 U.S.A.

Fluke Europe B.V.
PO Box 1186, 5602 BD
Eindhoven, The Netherlands

For more information call:
In the U.S.A. (877) 355-3225 or
Fax (425) 446-5116
In Europe/M-East/Africa +31 (0) 40
2675 200 or Fax +31 (0) 40 2675 222
In Canada (800)-36-FLUKE or
Fax (905) 890-6866

From other countries +1 (425) 446-5500 or
Fax +1 (425) 446-5116
Web access: <http://www.flukecal.com>

©2010-2013 Fluke Calibration. Specifications subject to change without notice. MET/CAL and MET/TRACK are registered trademarks of Fluke Corporation. Crystal Reports is a trademark of Seagate Technology. Microsoft, Windows, Excel and Word are trademarks of Microsoft Corporation. Information is subject to change without notice. Printed in U.S.A. 6/2013 3624356B_EN

Modification of this document is not permitted without written permission from Fluke Calibration.