

How to run a license report from MET/TRACK® software

Application Note

Applies to MET/TRACK® and MET/CAL® versions 7.X

From any version 7 installation follow these instructions:

- 1) Log in to MET/TRACK as a regular user (NOT the administrative, or MT, user).
- 2) Select the **Reports** menu.
- 3) Select **Run Any Report** and you will see an **All Reports** window like the one shown in Figure 1.
- 4) Browse through the list for the report called **License** and double-click on the title to run it.
- 5) The report will print to your screen and look something like the one shown in Figure 2.

From there you can print it or save it as a **pdf** or **RTF (rich text format)** document to a location you choose.



To print it, just click the printer icon.



To save it as a pdf document, select the Export button.

| Report Name | Size | Date | Time |
|---------------------------------------|-----------|-------------|----------|
| A2LA CERTren.rpt | 240,128 | 12 Dec 2006 | 14:18:25 |
| Annettes_Fixed_report.rpt | 3,379,712 | 7 Feb 2007 | 16:35:15 |
| Asset Label V7.rpt | 19,456 | 1 May 2007 | 16:28:41 |
| AZ-Internal Cycle Time by Period.rpt | 13,312 | 9 Jan 2007 | 15:38:47 |
| basic_inventory.rpt | 9,728 | 28 Mar 2005 | 17:25:18 |
| basic_report_template.rpt | 17,920 | 28 Mar 2005 | 17:27:06 |
| Cal_L_L_Logo_20060119.rpt | 36,864 | 7 Jul 2006 | 11:33:58 |
| cal_due_by_asset_for_xxx_days.rpt | 12,800 | 28 Mar 2005 | 17:59:54 |
| cal_due_by_asset_for_xxx_days_cust... | 15,872 | 13 Jun 2007 | 15:58:10 |
| cal_due_by_asset_for_xxx_days_with... | 15,360 | 22 Jun 2007 | 13:18:05 |
| cal_due_by_asset_through_date.rpt | 13,824 | 28 Oct 2004 | 18:26:18 |
| cal_due_by_dept_by_status_for_xxx... | 16,384 | 7 Oct 2004 | 16:29:18 |
| cal_due_by_location_by_status_thru... | 16,384 | 7 Oct 2004 | 16:29:20 |
| cal_due_by_tech_by_status_for_xxx... | 14,336 | 28 Oct 2004 | 18:26:22 |
| cal_due_by_tech_by_status_thru_dat... | 16,384 | 7 Oct 2004 | 16:29:26 |
| cal_procedures_and_revs_for_eqpt.rpt | 15,360 | 28 Mar 2005 | 16:13:40 |
| cal_summary_for_asset_number.rpt | 17,408 | 7 Oct 2004 | 16:29:28 |
| cal_summary_for_work_order.rpt | 17,408 | 7 Oct 2004 | 16:29:30 |
| Cduedday_fixed.rpt | 15,872 | 20 Jul 2006 | 09:23:24 |
| Cert_of_cal_w_sig.rpt | 1,412,608 | 3 Aug 2006 | 08:49:14 |
| Cert_of_cal_w_sig.TEST.rpt | 1,412,608 | 7 Sep 2006 | 13:41:24 |
| ctagrslt.rpt | 41,317 | 4 Oct 2002 | 10:20:52 |
| Excel Spreadsheet_new.rpt | 21,504 | 24 Jan 2007 | 15:03:38 |
| field_customization.rpt | 57,856 | 7 Oct 2004 | 16:29:32 |
| field_properties.rpt | 102,912 | 7 Oct 2004 | 16:29:40 |
| Karda.rpt | 17,408 | 10 Jan 2007 | 16:19:09 |
| license.rpt | 11,776 | 30 Mar 2005 | 14:06:10 |
| Maintenance_history_for_model.rpt | 17,920 | 14 May 2007 | 15:26:25 |
| master_inventory_for_asset_number.rpt | 14,336 | 7 Oct 2004 | 16:29:42 |
| met_lab_report_of_cal (2).rpt | 76,288 | 1 Jun 2007 | 08:33:39 |

Figure 1. All Reports window.

MET/BASE Applied Licenses
for
Fluke Corporation
6920 Seaway Blvd
Everett, WA 98208-9990

Current version of MET/CAL Plus: 7.20

| Product | Version | Serial Number | Date Applied |
|---------|---------|---------------|------------------------------|
| MET/CAL | 7 | 008114012 | Thursday, September 26, 2002 |

Total MET/CAL Licenses applied 1

Total number of all licenses applied: 1

To purchase MET-Support-Gold coverage please order :

MET/SUPPORT GOLD, 1-CLIENT,PRIORITY SUPPORT PACKAGE

Figure 2. Report screen example.

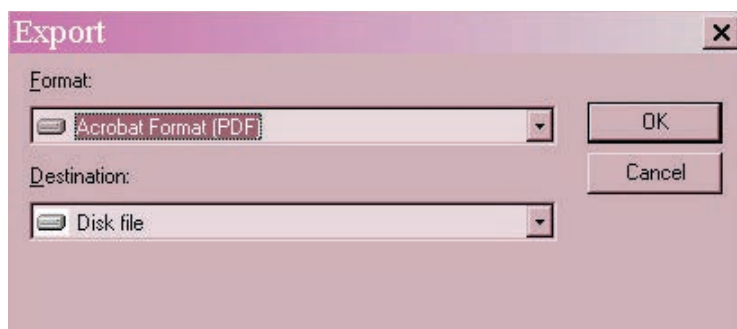


Figure 3. Export window.



Figure 4. Export Options window.

Then make sure you select **Acrobat Format (PDF)** in the **Format** field and **Disk File** in the **Destination** field, as in Figure 3.

Click the **OK** button to select **All** pages and continue the process as shown in Figure 4.

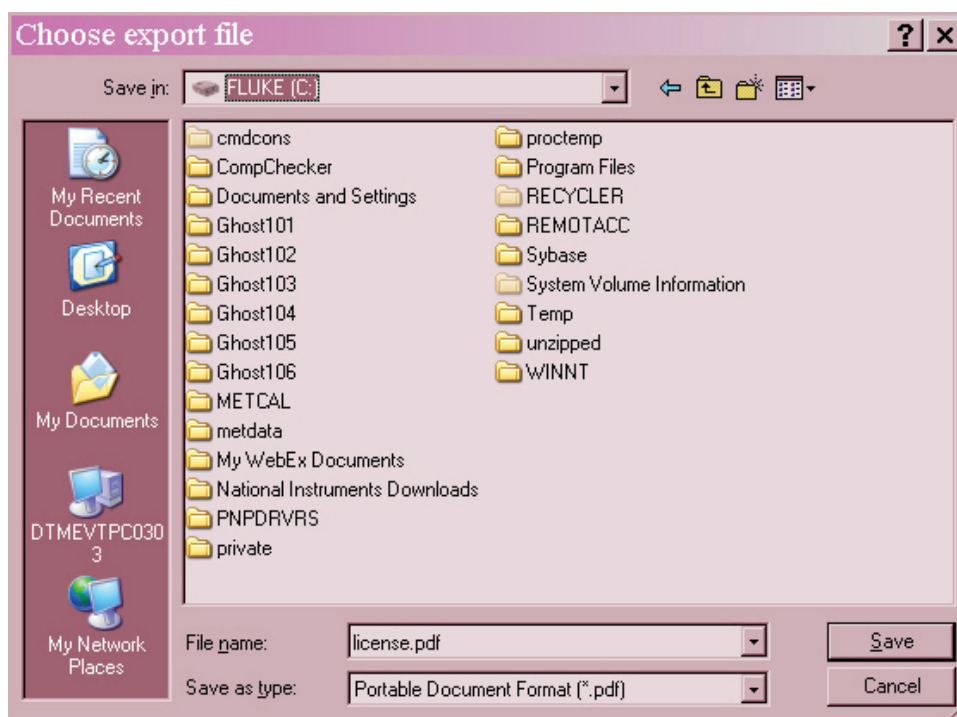


Figure 5. Export File window.

Browse to the location where you want to save the file.

From there you can attach it to an email to send with your **MET/SUPPORT Gold Software Plan Registration Form to Gold.Register@fluke.com**.

Fluke Calibration.

Precision, performance, confidence.™

- Electrical
- RF
- Temperature
- Pressure
- Flow
- Software

Fluke Calibration
PO Box 9090, Everett, WA 98206 U.S.A.

Fluke Europe B.V.
PO Box 1186, 5602 BD
Eindhoven, The Netherlands

For more information call:
In the U.S.A. (877) 355-3225 or
Fax (425) 446-5116
In Europe/M-East/Africa +31 (0) 40 2675 200 or
Fax +31 (0) 40 2675 222
In Canada (800)-36-FLUKE or
Fax (905) 890-6866
From other countries +1 (425) 446-5500 or
Fax +1 (425) 446-5116
Web access: <http://www.fluke.com>

©2008-2013 Fluke Corporation.
Specifications subject to change without notice.
Printed in U.S.A. 11/2013 3359849B_EN
Pub_ID: 11462-eng Rev 02

**Modification of this document is not permitted
without written permission from Fluke Corporation.**