

Vanta Software Manual

User Edition

Vanta 15, Vanta 15P, Vanta 30, Vanta 30P

Contents

Getting Started.....	3
How to Install the Program.....	3
Step 1: Download the software	3
Step 2: Choose your directory and click Next.....	4
Step 3: Popup window for the PDF Creator.....	4
How to Launch the Program	6
How to Connect the Scale to the Software on your PC	7
How to Connect to the Network	7
How to Connect Directly via RS-232.....	11
How to Program and Edit a PLU.....	16
Common Descriptions of PLU Settings.....	16
How to Configure a PLU	17
How to reset to the default PLU configuration.....	19
How to Enter Basic PLU Data	19
Step 1: Department tab	19
Step 2: Group tab.....	20
Step 3: Sales Message tab	20

Step 4: Origin tab.....	21
Step 5: Tare tab.....	21
Step 6: Ingredients tab.....	22
Step 7: Nutrition Facts Tab.....	22
Step 8: Traceability tab.....	23
Step 9: Extend info tab.....	23
Step 10: Barcode tab.....	24
How to Create and Edit a PLU	25
Step 1: Click the "PLU Edit" tab and then "Add" to Create.....	25
Step 2: Click on the PLU to enter information	25
Step 3: Click the "PLU Edit" tab and then click on the PLU to edit	26
How to Clone a PLU.....	26
Step 1: Select the PLU that you want to Clone (copy).....	27
Step 2: Create the new PLU.....	27
Step 3: Edit the PLU.....	28
How to Change the Unit Price.....	28
Step 1: Click on the "Change Unit Price" tab.....	28
Step 2: Input the PLU number into the "Input PLU No:" field.....	29
Step 3: Click "Search" to return the current price.....	30
Step 4: Input the new price into the "Input Unit Price" field.....	31
Step 5: press "Save" to complete the process.....	31
How to add, modify and delete a PLU Discount	31
How to set a Global Discount.....	34
How to Configure the Scale	34
Step 1: Function Key Definition tab	35
Step 2: Scale Basic Information tab.....	35
Step 3: Date & Time tab.....	36

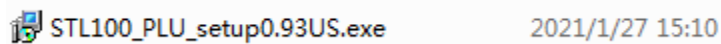
Step 4: Display tab.....	36
Step 5: User Security Config tab	37
Step 6: Serial Port Setting tab	38
Step 7: Print Setting tab	38
How to Program Speed Keys.....	39
How to Assign a PLU to a Speed Key	39
How to Print your Speed Key overlay	42
How to Upload and Download to the Scale	43
To upload from the scale to the PC, click the "Scale to PC" icon and follow the prompts in the pop-up windows.....	43
To download from the scale to the PC, click the "PC to Scale" icon and follow the prompts in the pop-up windows.....	45

Getting Started

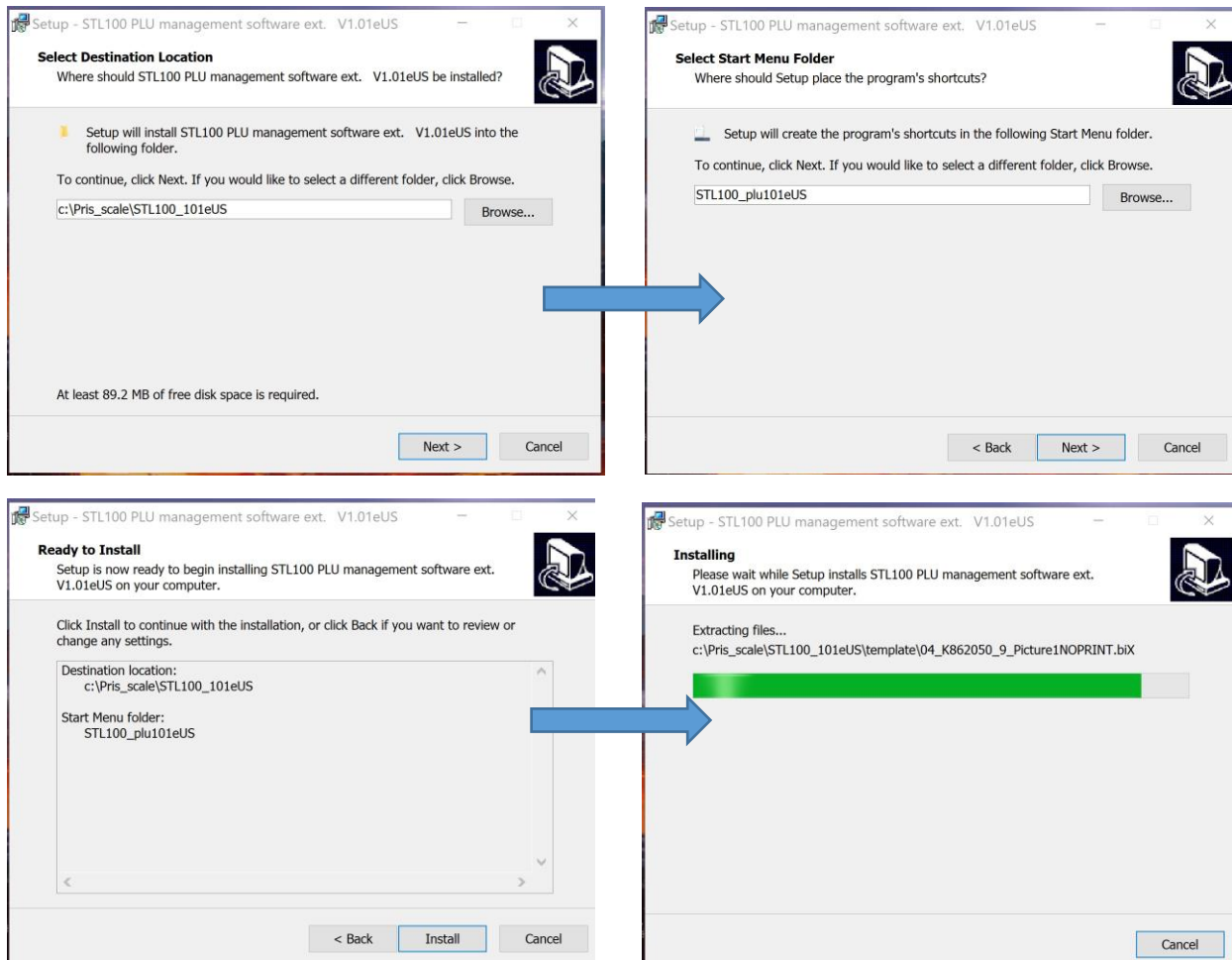
How to Install the Program

Download the latest version of the software from your Dealer or Kilotech and install it according to your organisation's policies. The following screenshots show a typical installation process.

Step 1: [Download the software](#)

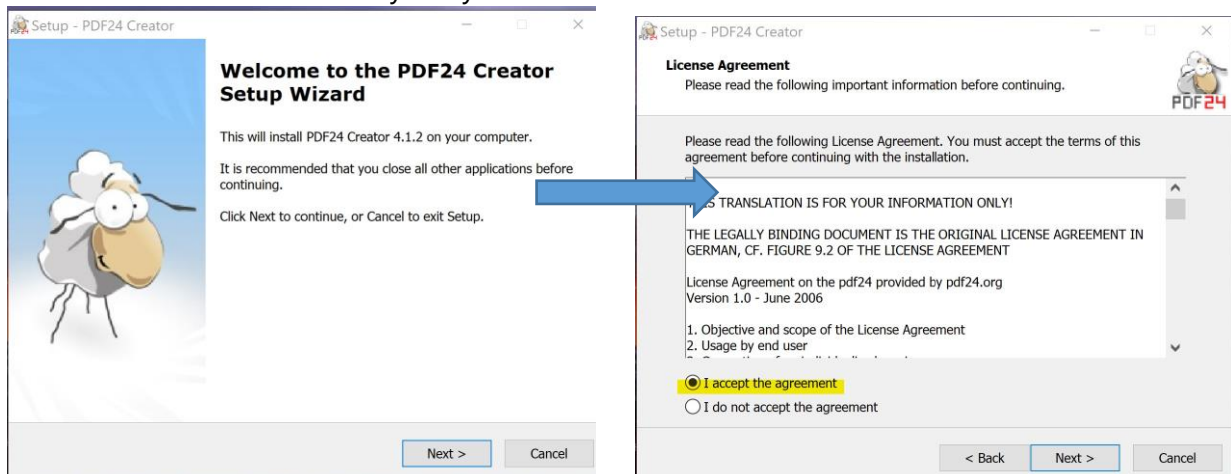


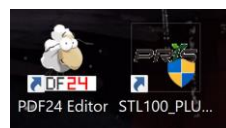
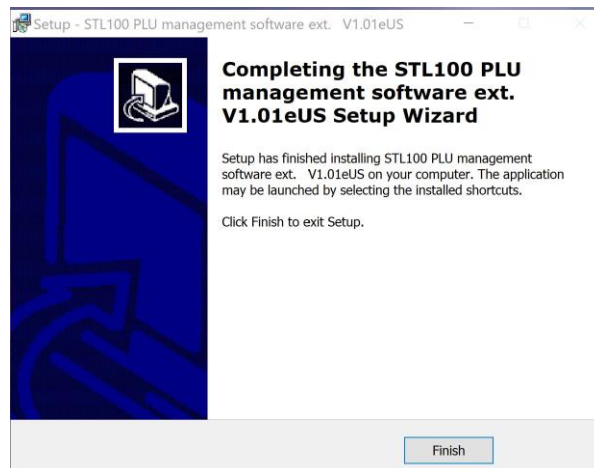
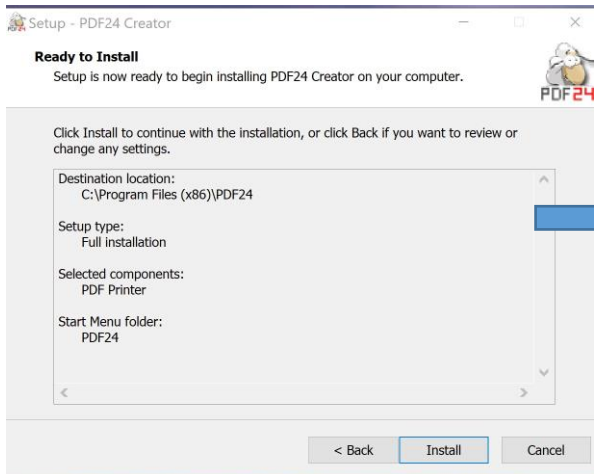
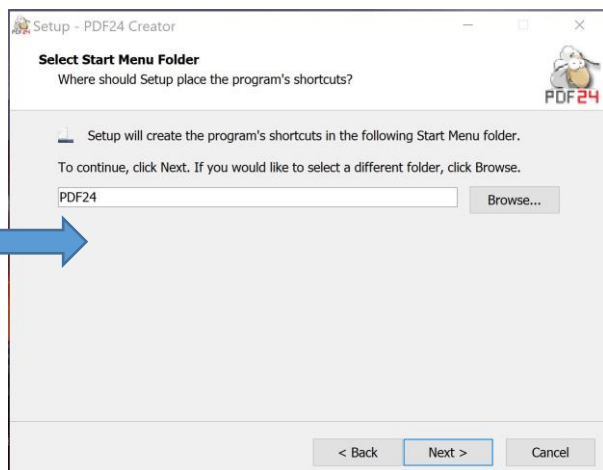
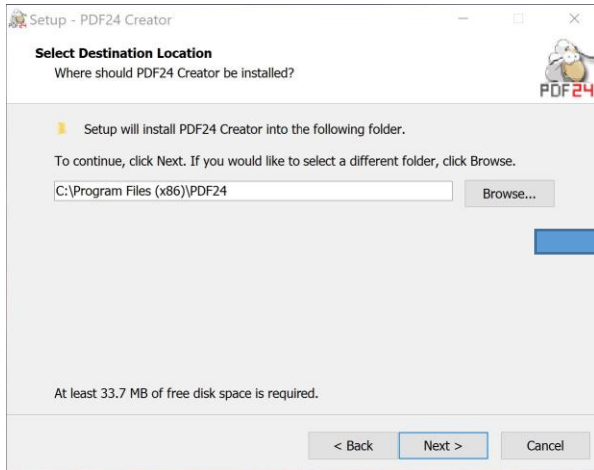
Step 2: Choose your directory and click Next



Step 3: Popup window for the PDF Creator

The software will automatically ask you to download a PDF add-in.

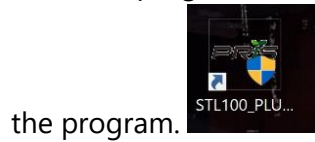




You will then see the 2 shortcut icons on your desktop:

How to Launch the Program

Once the program has been installed, simply double-click the icon on your desktop to launch



the program.

Enter you login credentials (this information may be provided by your dealer).

A login dialog box with the title 'Please input user name and password'. It contains two text input fields: 'User Name' and 'Password'. Below the fields are two buttons: 'Cancel' and 'OK'.

Your Home Screen will look like the following:

A screenshot of the 'PLU Edit Window' software interface. The window title is 'PLU Edit Window' and the menu bar includes 'File(F)', 'PLU', 'Setup', 'Scale Register', 'Label Set', and 'Help(H)'. The main area is divided into several sections: a top toolbar with 'Scale To PC', 'PC To Scale', 'Copy', 'Paste', 'Save', 'Change Group', and 'Change Department'; a left sidebar with 'Edit PLU' (Add, Delete), 'Department' dropdown, 'PLU Search' (Department, Group, PLU No. range, PLU No., PLU Name1), and 'Delete PLU File in Scale'; a central table with columns: 'All', 'PLU No.', 'Speed Key', 'PLU Type', 'Name', 'Name2', 'Name3', 'Item No.', 'Department Code', and 'Group Code'. The first row is highlighted in red. A right sidebar contains a 'PLU No.' field, 'Item No.', 'Name1', and a detailed configuration panel with fields for 'PLU No.', 'Speed Key', 'PLU Type', 'Name1', 'Name2', 'Name3', 'Item No.', 'Department', 'Group', 'Charge Unit', 'Quantity', 'Unit Price', a 'Fixed Price' checkbox, and 'Tare'.

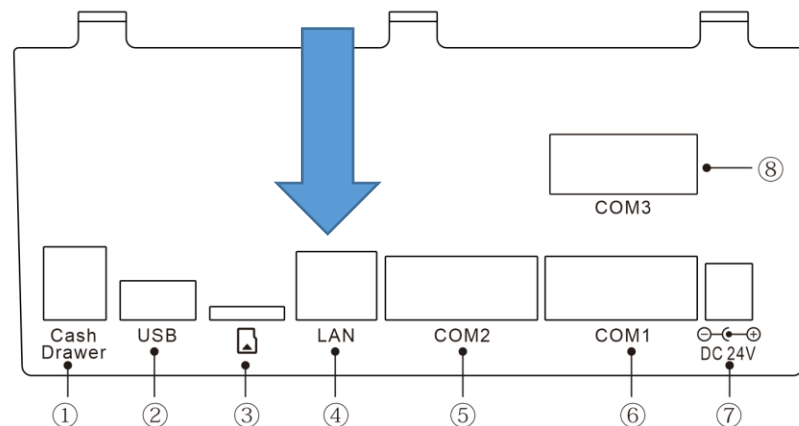
How to Connect the Scale to the Software on your PC

There are two ways to connect the scale to the software on your PC. It can communicate on the network or connect directly to your computer. To communicate on the network, use an Ethernet cable. To connect directly to your computer, use an RS-232 serial cable.

How to Connect to the Network

You will need an Ethernet cable in order to connect your scale to the network.

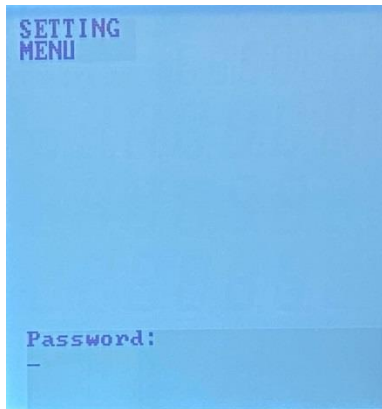
- Connect the cable to the scale and to the network router/switch.



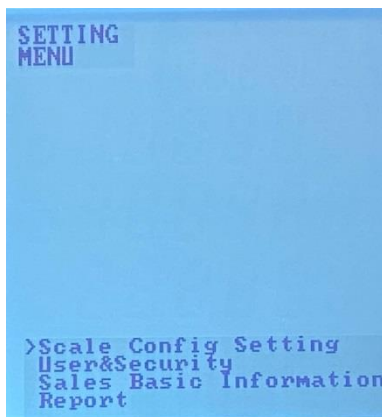
- Power on scale (switch is under the left-hand side of the scale)



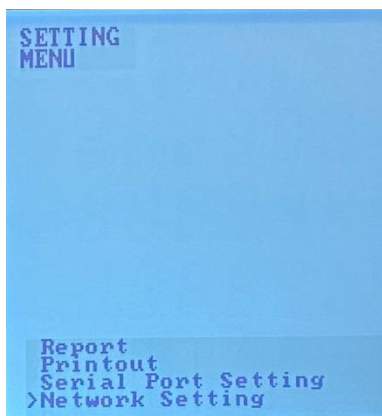
- Go to the Setting / Menu screen.
- Long press the "Setting" key to enter into the settings mode.
- Type your password and click "Enter" (this information may be provided by your dealer).



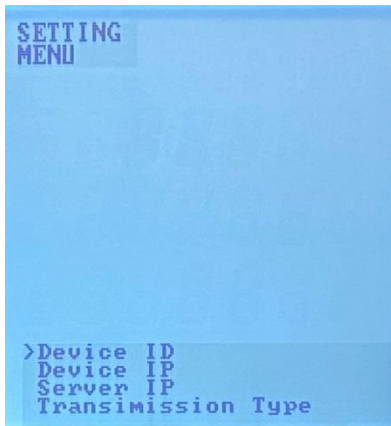
- This unlocks the following options:



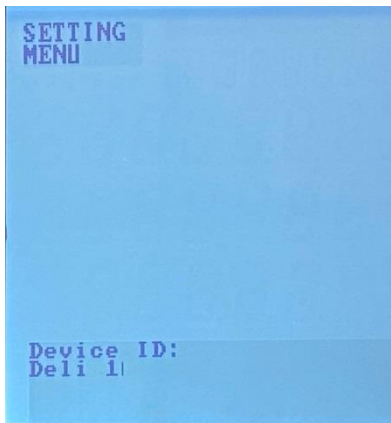
- Using the X key (down arrow), scroll down the menu to "Network Setting" and click "Enter".



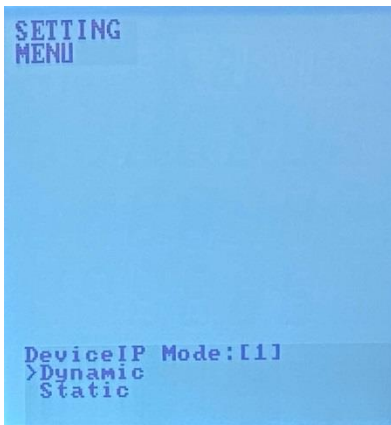
- Use "Network Settings Menu" to set up the network configuration of the scale and the IP address of your computer which will act as the server for the scale software. To access each sub-menu, click "Enter".



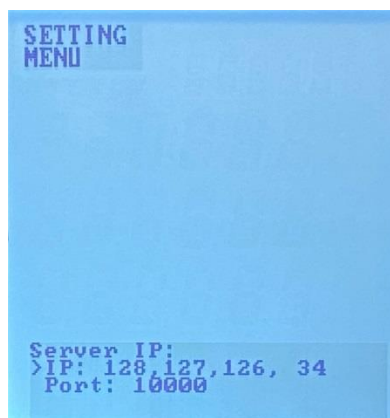
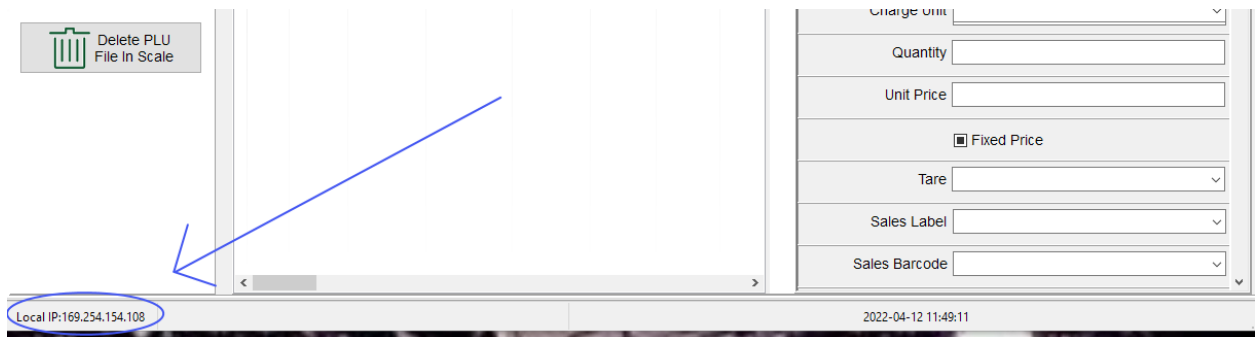
- Use "Device ID" to create an ID (name) for your scale. If there are many scales in use, identify the scale based on its location ex: Deli 1, Deli 2, Vegetable Dept., etc.



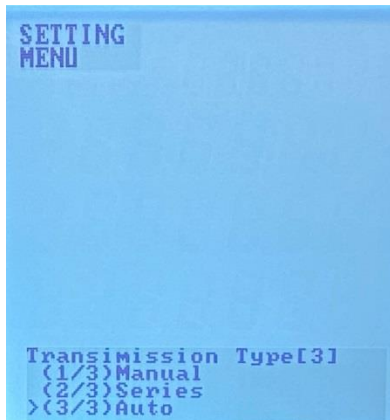
- "Device IP": The scale can work in Dynamic mode (i.e., automatic IP configuration) or in Static mode (i.e., need to enter the IP address manually). To enter the IP address manually, enter a value and then use the right arrow to enter the next value. Ex: to manually enter IP 192.168.0.5, type 192, right arrow, type 168, right arrow etc. When finished, click "Enter".



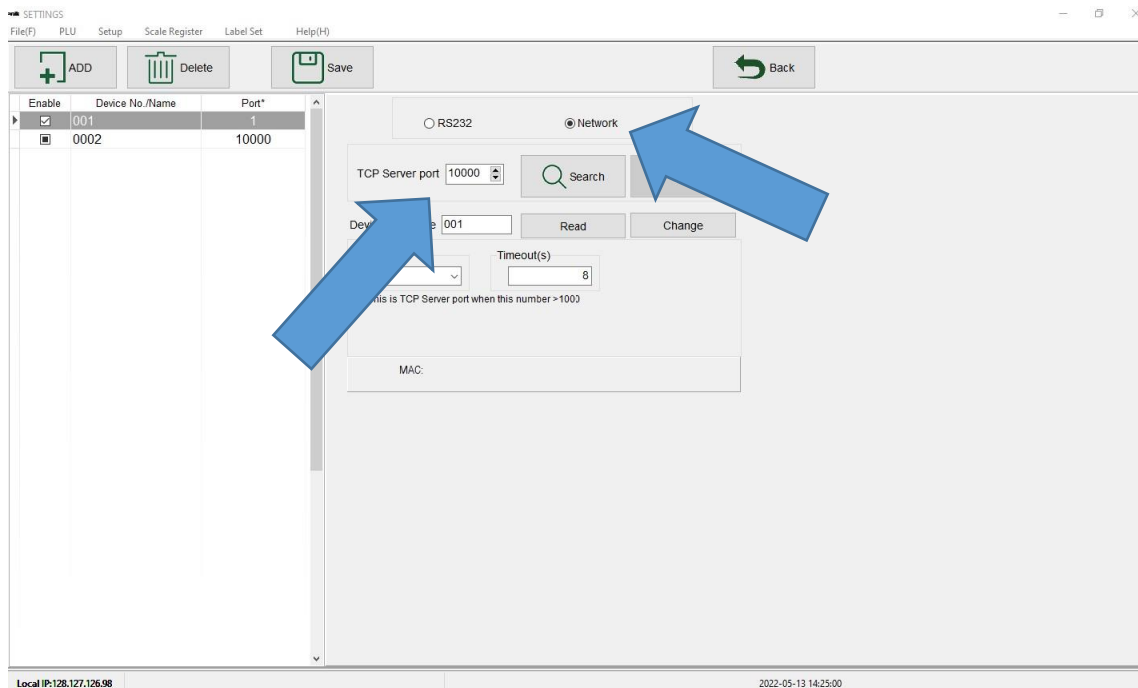
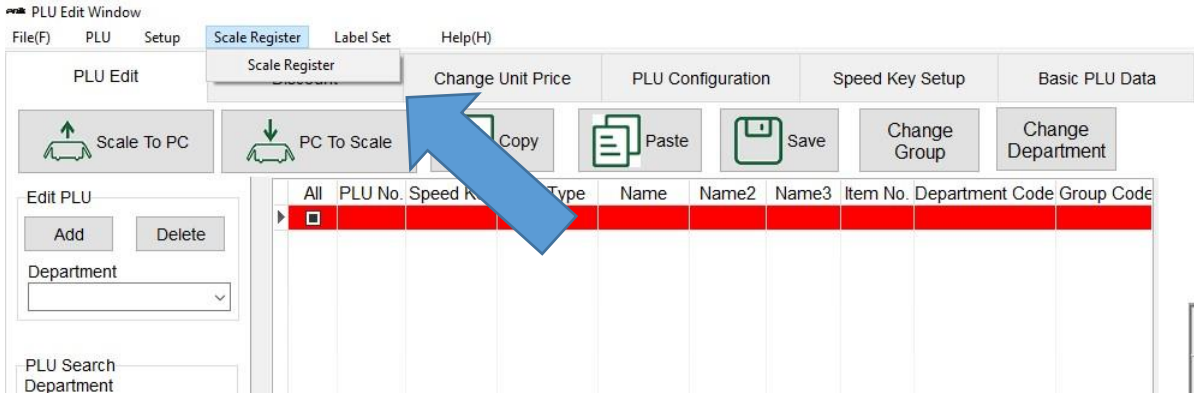
- “Server IP”: The “server” for the scale is the computer where the software was installed. Type the IP address of your computer (located at the bottom left corner of the software) and enter the Port number 10000.



- “Transmission Type”: Set the transmission type to “Auto” to avoid communication issues.



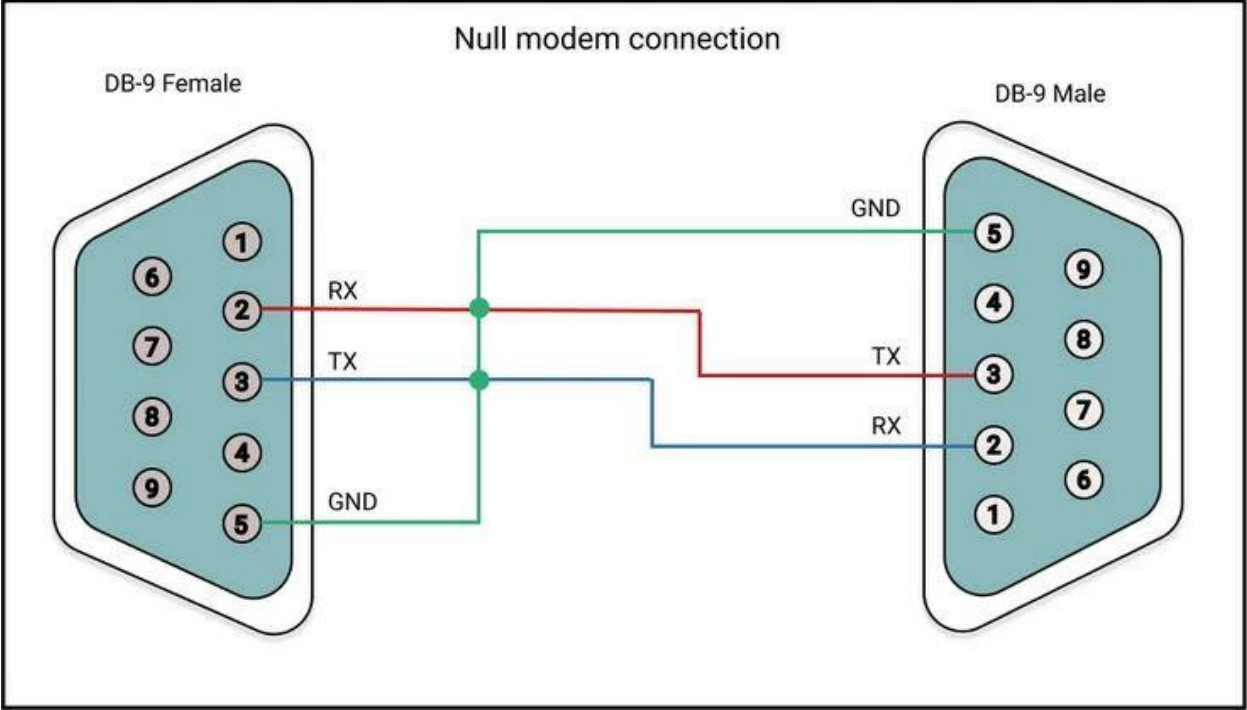
- When the settings are defined, click “ESC” until returned to the Sale window.
- Open the STL100 software on the PC.
- Click “Scale register” and then “Scale register” again.



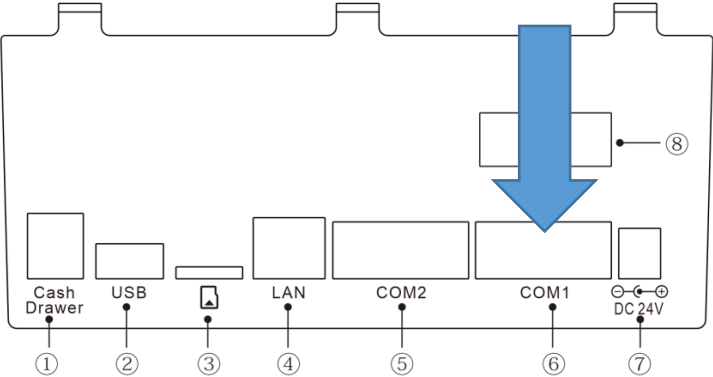
- Click on "Network" and verify that the TCP Server port value is 10000.
- Click "Search" button. The scale should automatically appear in the Scale register window in the left column.
 - Confirm that the MAC # or your device #/name of your scale appears in the list.
- Data can now be transferred to and retrieved from the scale.

How to Connect Directly via RS-232

You will need an RS-232 cable in order to connect your scale to the computer.



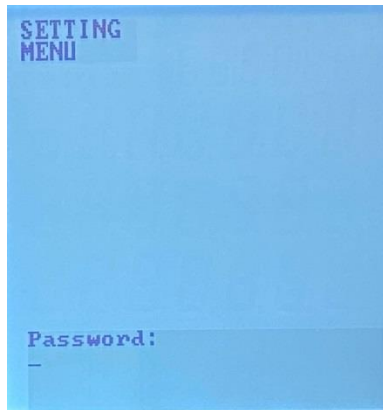
- Connect the cable to the scale and to the computer.



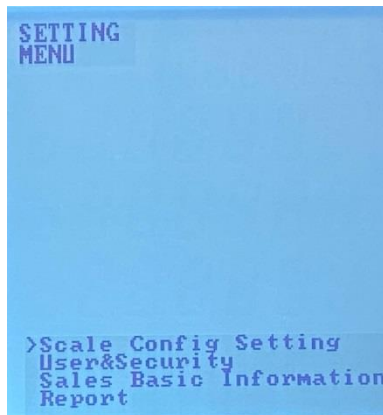
- Power on scale (switch is under the left-hand side of the scale)



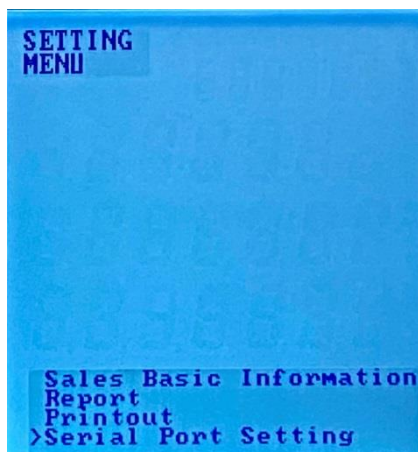
- Go to the Setting / Menu screen.
- Long press the "Setting" key to enter into the settings mode.
- Type your password (123456) and click "Enter".



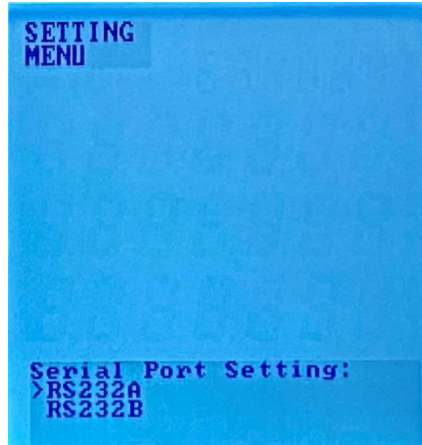
- This unlocks the following options:



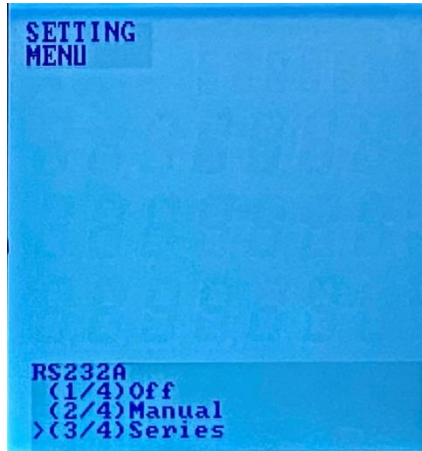
- Using the X key (down arrow), scroll down the menu to "Serial Port Setting" and click "Enter".



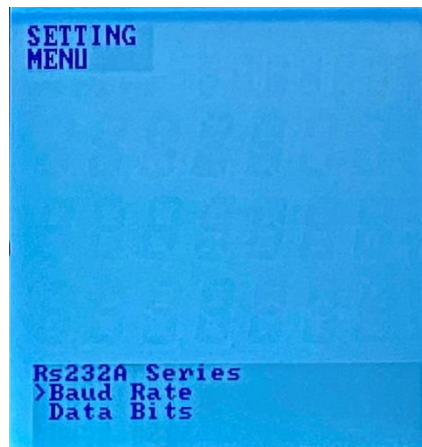
- Use "Serial Port Setting Menu" to set up the RS-232 configuration of the scale. Always select the "RS232A" setting. To access each sub-menu, click "Enter".



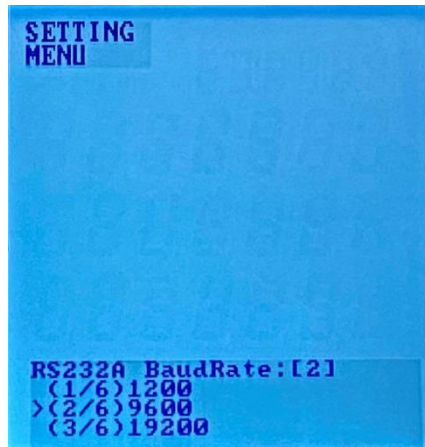
- Choose from "Off", "Manual", Series", or "Auto".



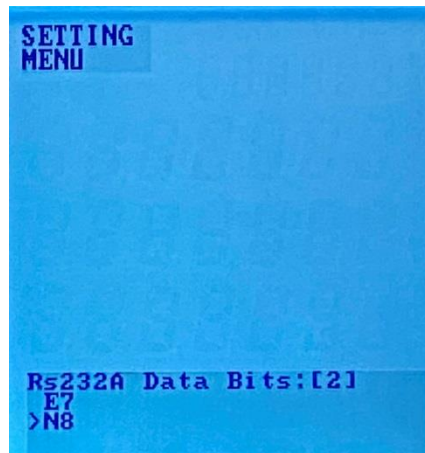
- If RS232A "Manual", Series", or "Auto" is selected, then both the "Baud Rate" and "Data Bits" need to be configured.



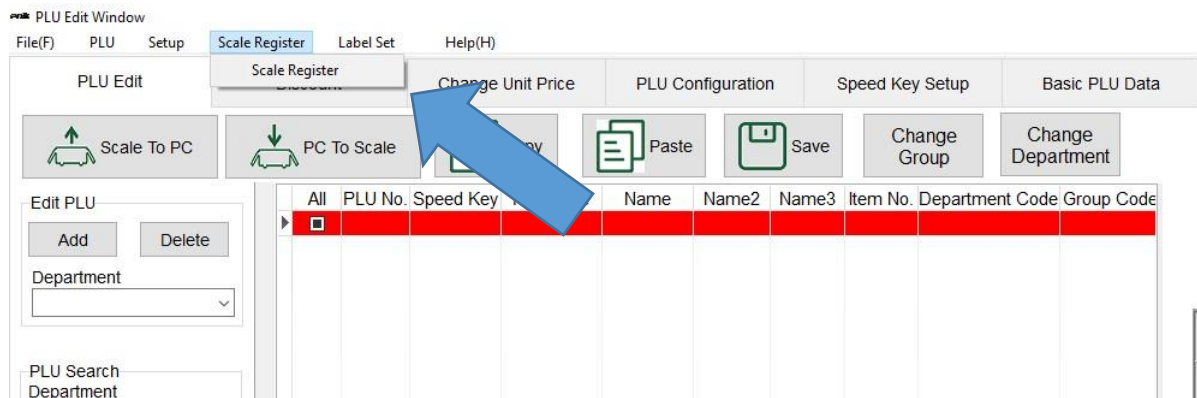
- "Baud Rate": 9600 bits per second is the recommended setting.

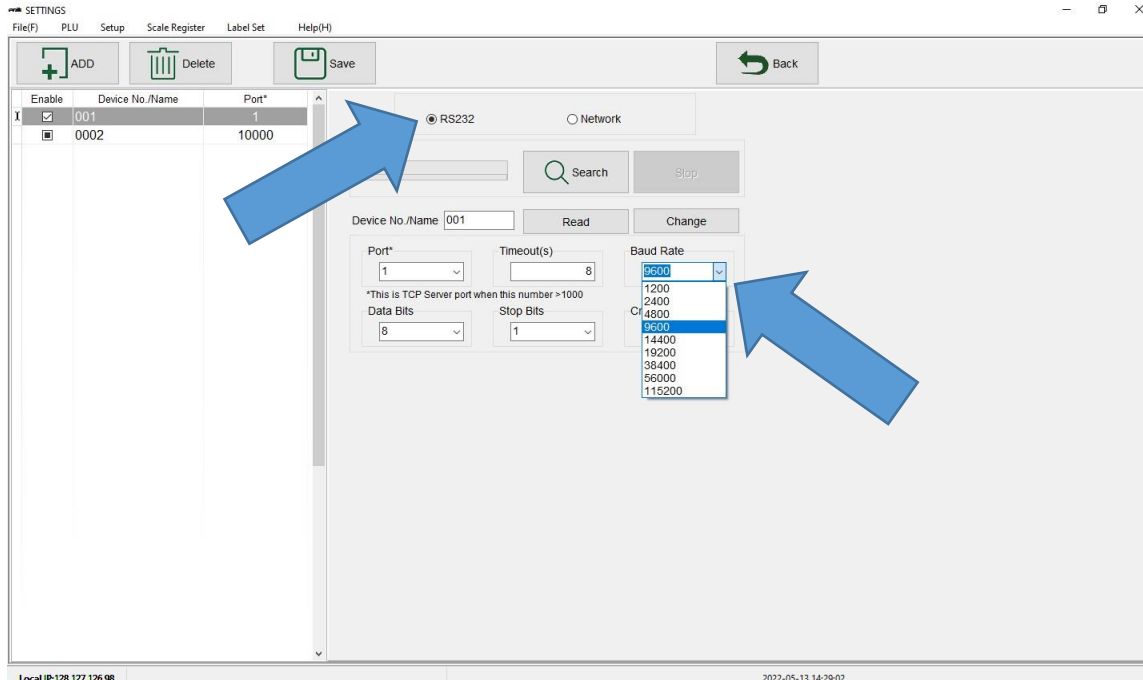


- "Data Bits": N8 is the recommended setting.



- When the settings are defined, click "ESC" until returned to the Sale window.
- Open the STL100 software on the PC.
- Click "Scale register" and then "Scale register" again.





- Click on "RS232".
- "Port": select "1".
- "Baud Rate": select "9600"
- "Data Bits": select "8".
- "Stop Bits": select "1".
- "Crc": select "None".
- "Enable": click on the box to check it on.
- Click "Search" button. The scale should automatically appear in the Scale register window in the left column.
- Data can now be transferred to and retrieved from the scale.

How to Program and Edit a PLU

Common Descriptions of PLU Settings

Below is a list of the most commonly used PLU settings and their descriptions. You can always add more information as necessary.

PLU SETTING

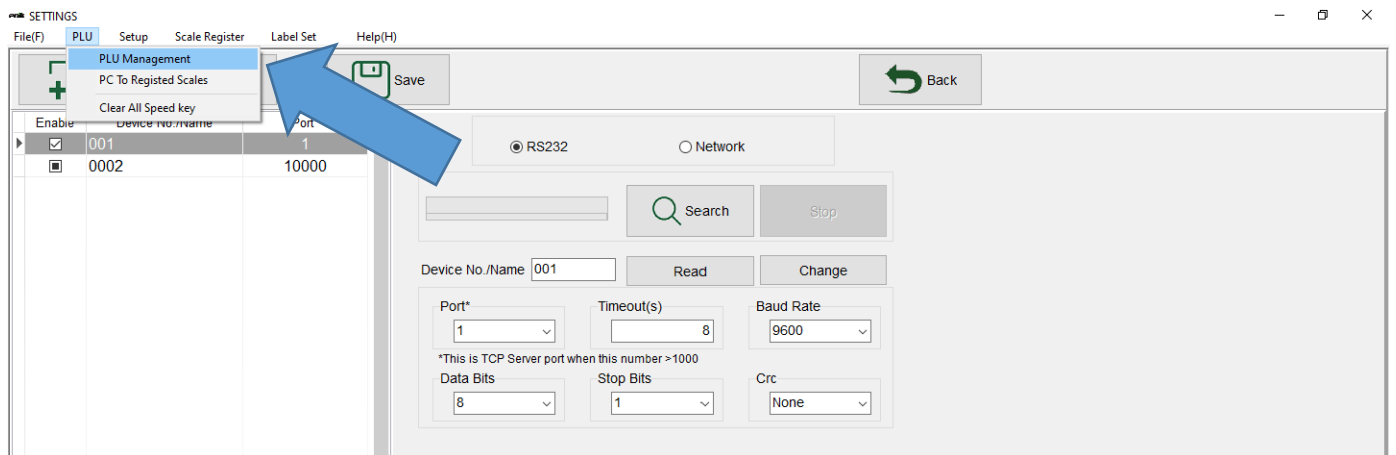
DESCRIPTION

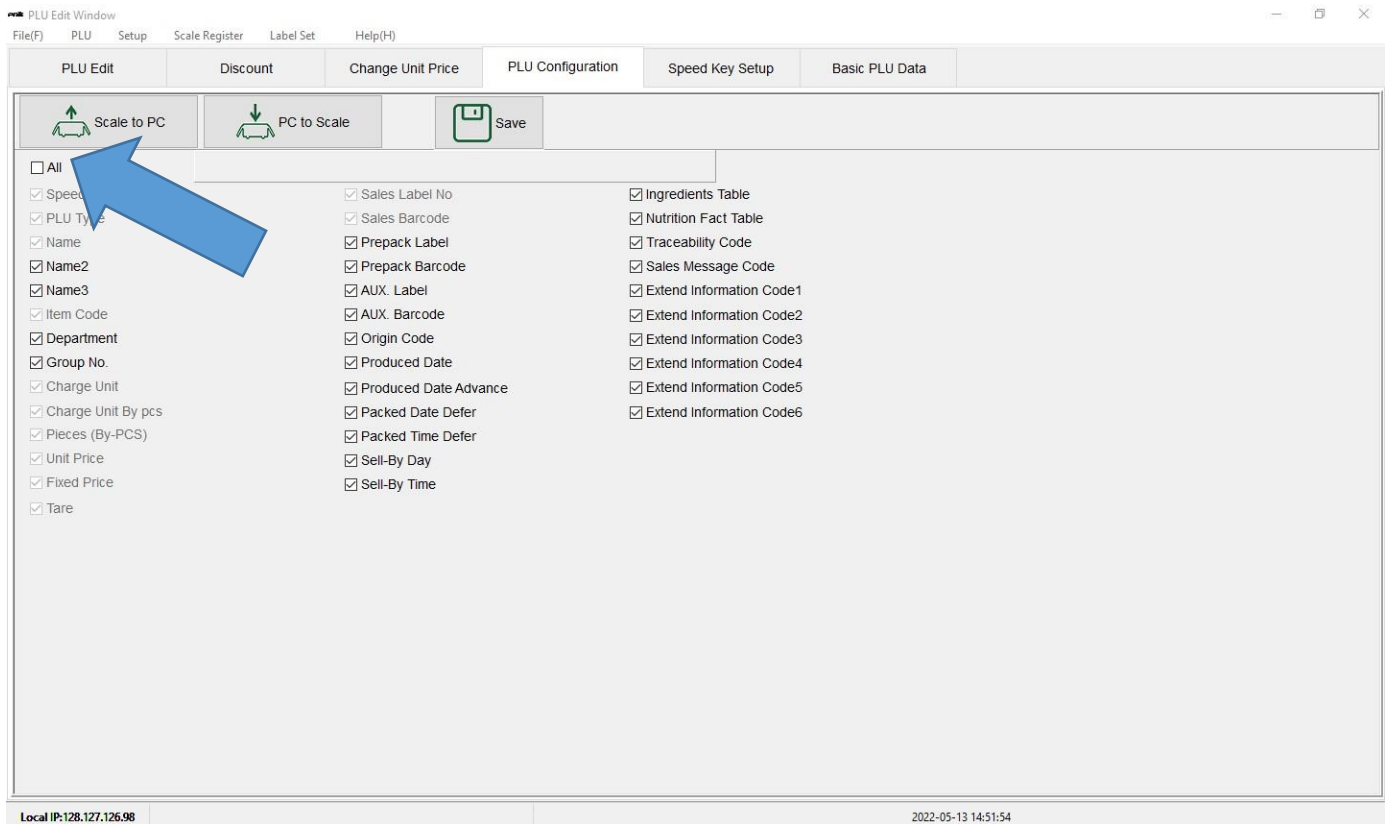
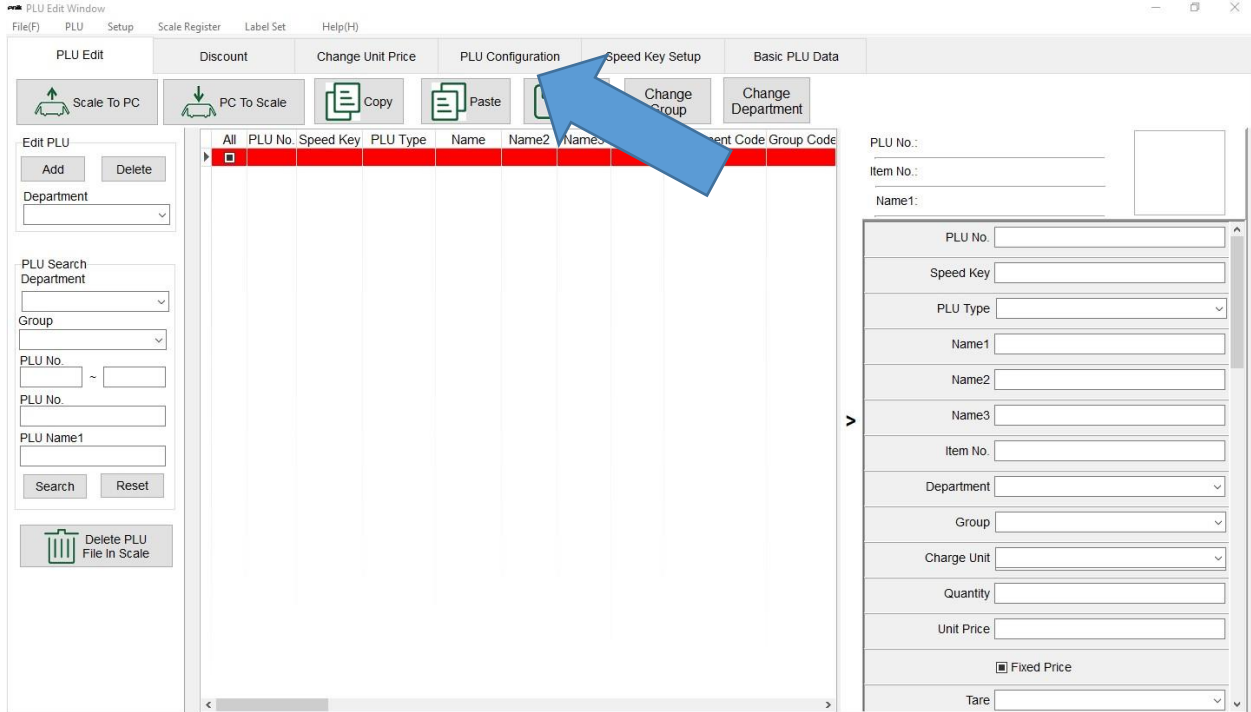
PluNo	Numerical code of the PLU
Speed Key	Preset key for a particular PLU
Name	Name of the product that the PLU represents
Item No.	Can be a different number than the PLU
Department Code	Higher level code of the PLU
Group Code	Higher level code of the Department
Charge Unit	Unit of measure for calculating the price
Quantity	Number of units / pieces
Unit Price	Price of an individual unit
Fix Price	Price of an item or group of item independent of weight
Tare	Weight of the empty container

How to Configure a PLU

Before a PLU can be created, certain fields must be selected. Certain fields are already programmed by default and are checked off in grayscale.

To access the PLU Config tab, start by selecting PLU and then PLU Management.

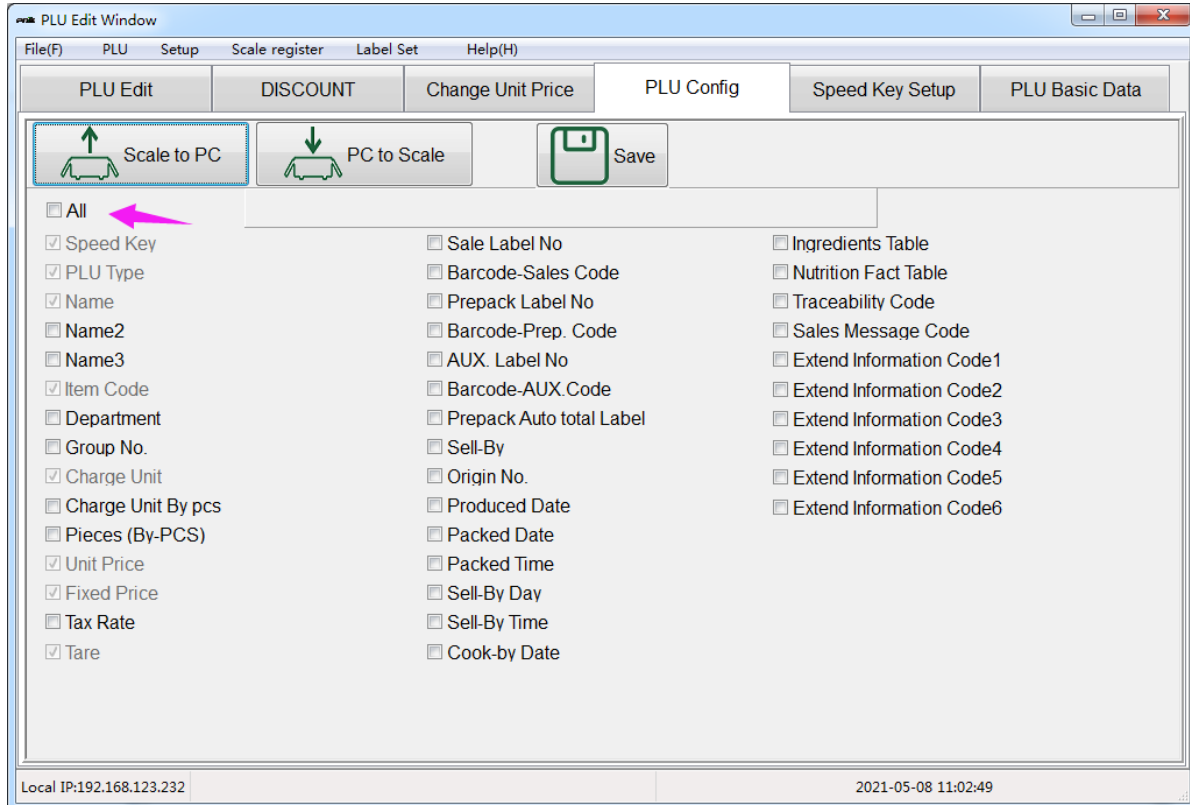




Click the "All" button and all the fields will be selected. Remove the unnecessary fields by unclicking the checkboxes. Click "Save" when completed.

How to reset to the default PLU configuration

Click on the "PLU Config" tab and then double-click the "All" checkbox. This will revert back to the default setting. Note that any fields in grey are mandatory.

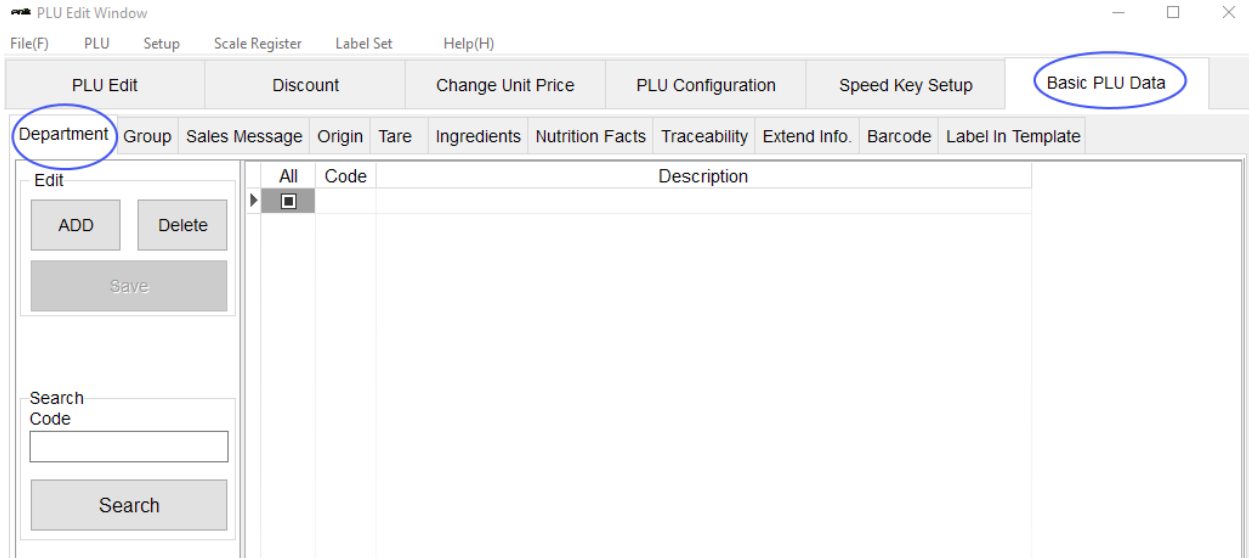


How to Enter Basic PLU Data

Start by clicking on the "Basic PLU Data" tab. This will open the window with individual tabs where you can input all the required and optional information for each PLU.

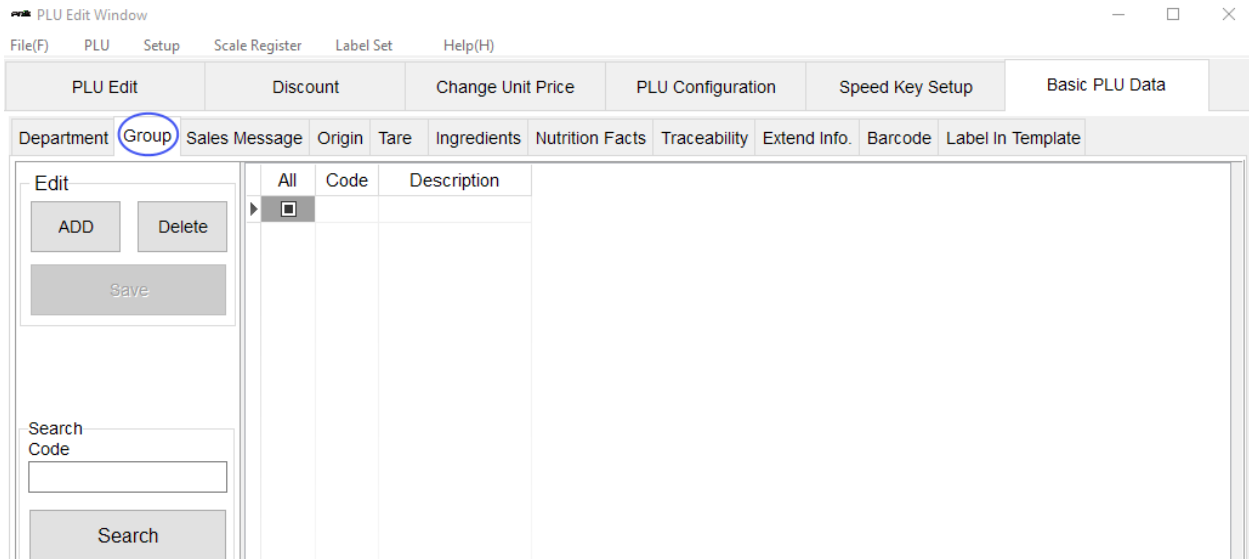
Step 1: Department tab

Individual PLU items may be organized by Departments. Click on the "Department" tab to define and edit the Departments.



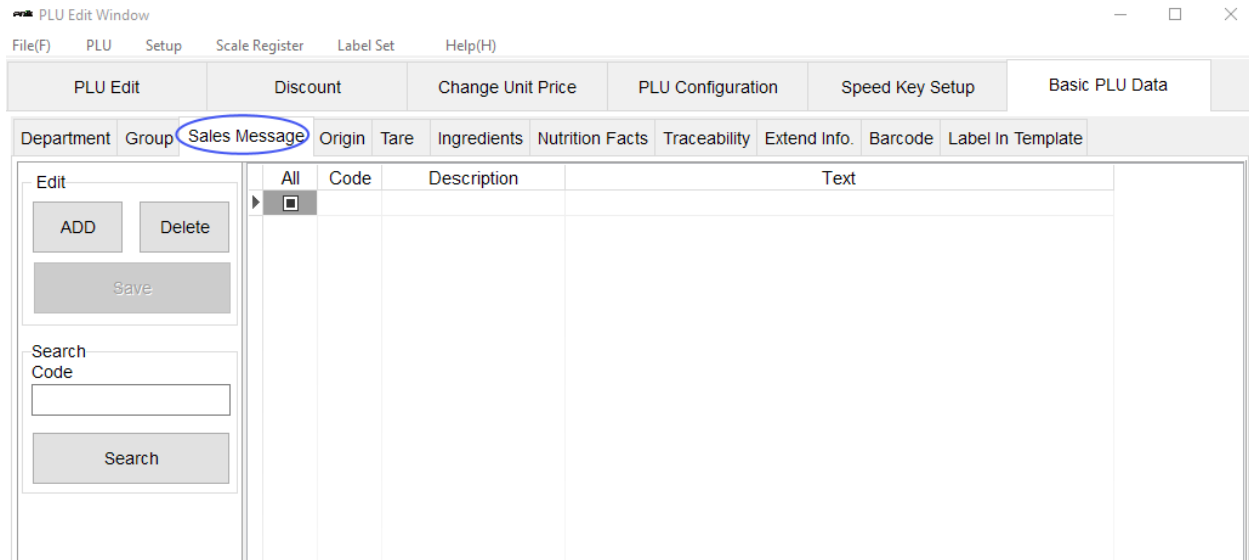
Step 2: Group tab

Individual Departments may be organized by Groups. Click on the "Group" tab to define and edit the Groups.



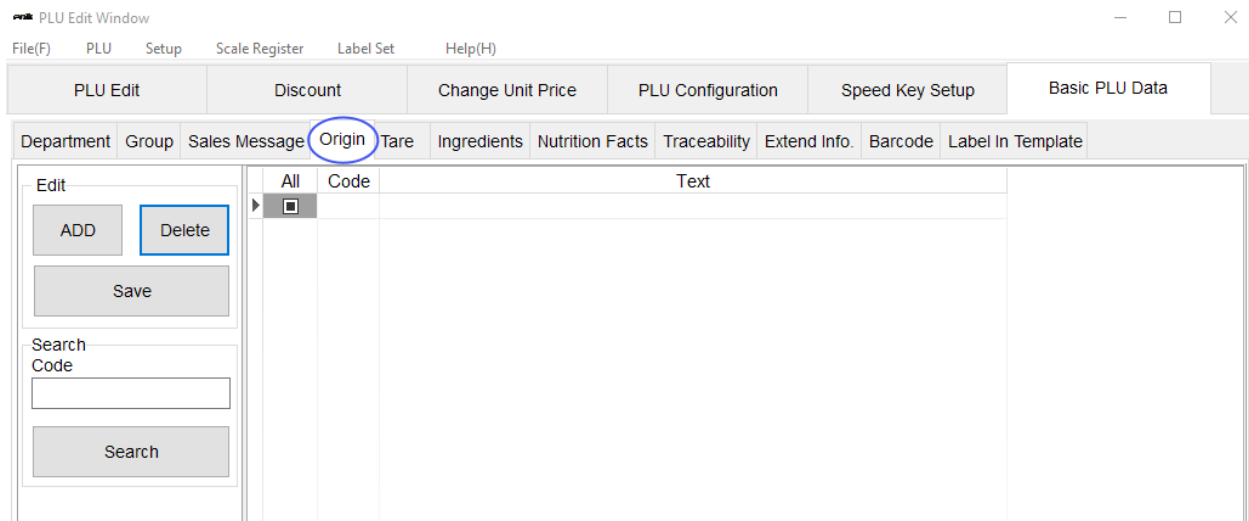
Step 3: Sales Message tab

Individual PLU items may require a Sales Message. Click on the "Sales Message" tab to define and edit the text.



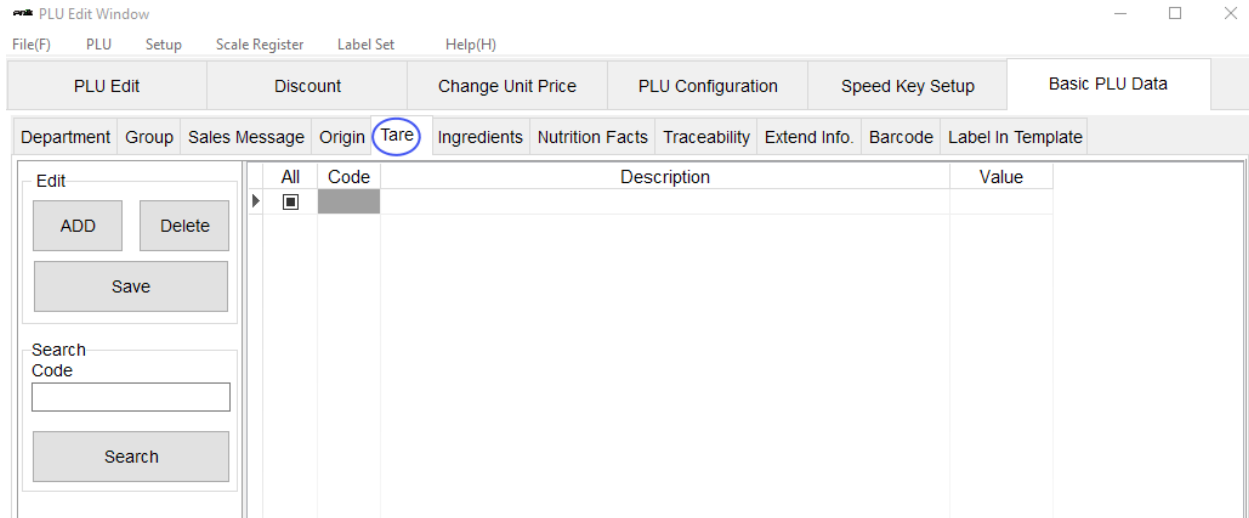
Step 4: Origin tab

Certain PLUs may require that the Country of Origin be specified on the label. Click on the "Origin" tab to define and edit the text.



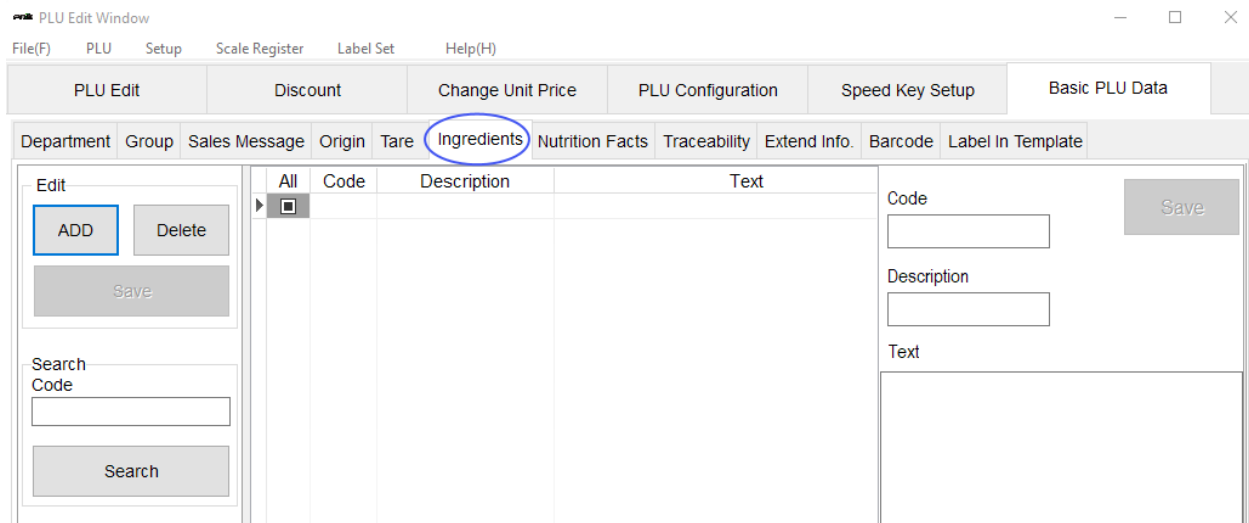
Step 5: Tare tab

Certain PLUs are weighed in containers, on trays or with some other type of packaging. Click on the "Tare" tab to define and edit the tare weight of the container being used.



Step 6: Ingredients tab

Certain PLUs require that the ingredients be printed on the label. Click on the “Ingredients” tab to define and edit the ingredients being used.

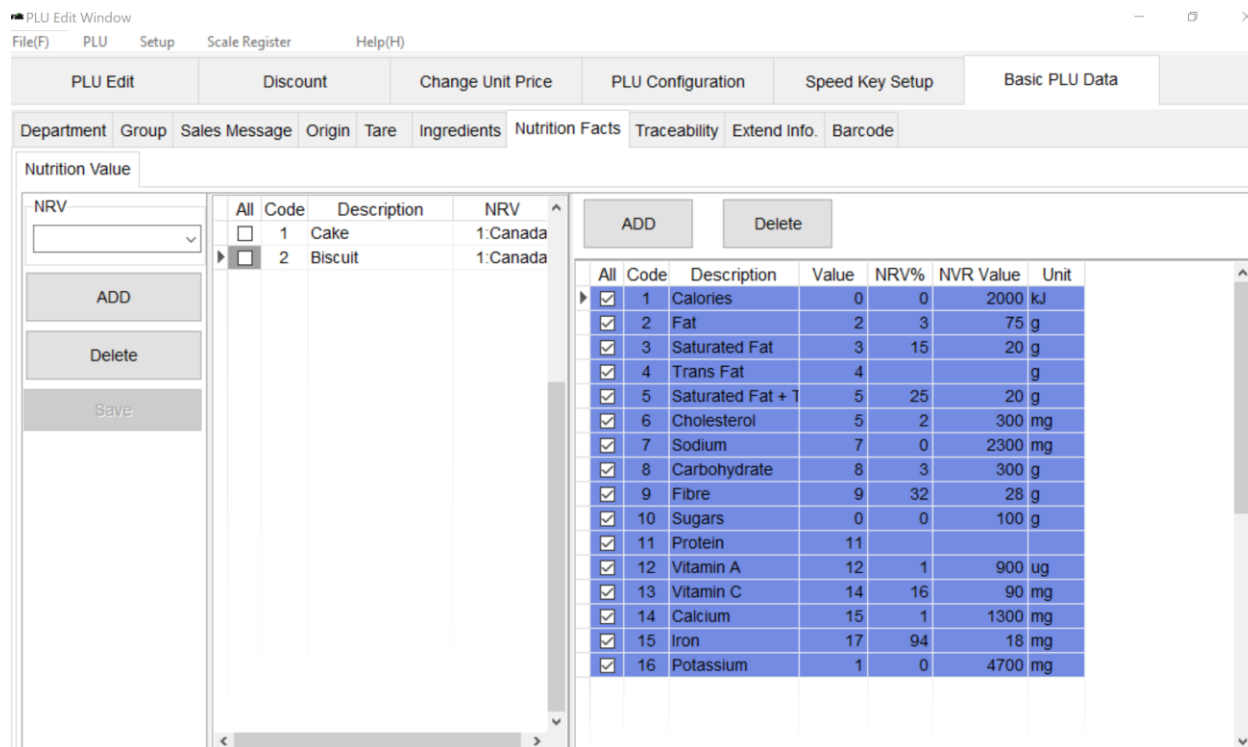


Step 7: Nutrition Facts Tab

There are food labeling requirements in Canada and the USA where nutritional information must be presented in table that has been designed according to specific criteria. Those criteria have been predefined in this scale.

Step 1: Using the predefined Canadian and US Nutritional Facts tables

Click on the “Basic PLU Data tab” and then click in the “Nutrition facts” tab. The window should default to the “Nutrition Facts Item Config” screen. If it doesn’t, then click on the tab. The predefined values appear in the right-hand table. Select the desired table.



Step 2: Adding data to the predefined Canadian and US Nutritional Facts tables

Once the correct table has been selected, the individual values in the table can be edited with the proper information for the PLU. Click on the rows of the table to edit the information in the cells.

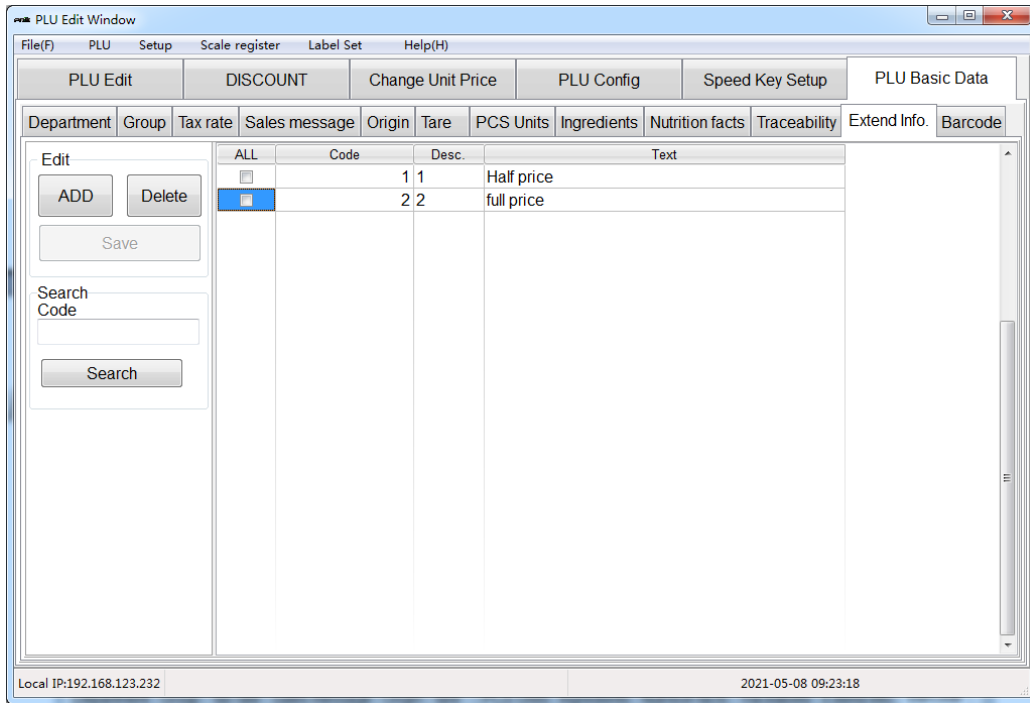
Step 8: Traceability tab

To comply with government and independent quality assurance and traceability standards, certain PLUs require detailed information on the provenance of meat, poultry and fish products. This traceability information can be added directly to the PLU.

Click on the "Basic PLU Data tab" and then click in the "Traceability" tab. The window should default to the "Traceability Edit" screen. If it doesn't, then click on the tab. Click on the "ADD" button to create a record and enter information. Once a record is created, clicking on the record itself allows you to edit the information. Traceability allows you document detailed information on the sourcing of each PLU to comply with local, regional or national requirements.

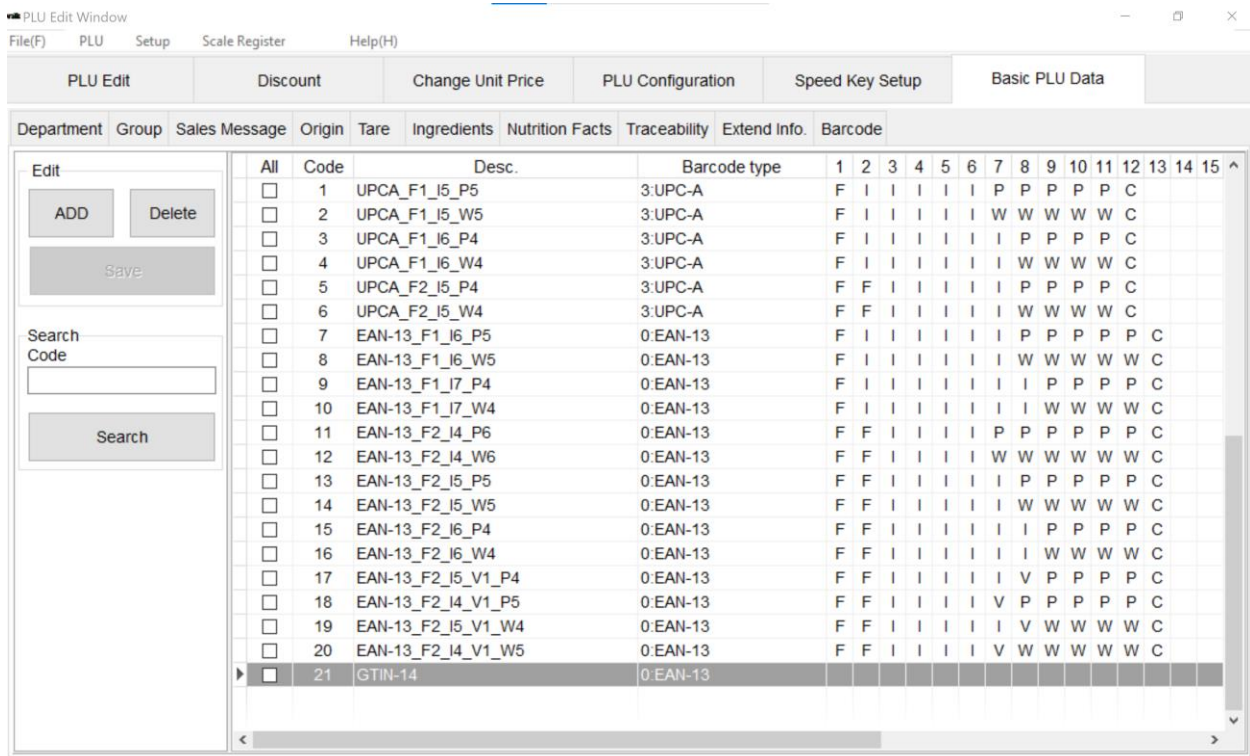
Step 9: Extend info tab

Click on the "Extend info" tab to add additional information for the PLU.



Step 10: Barcode tab

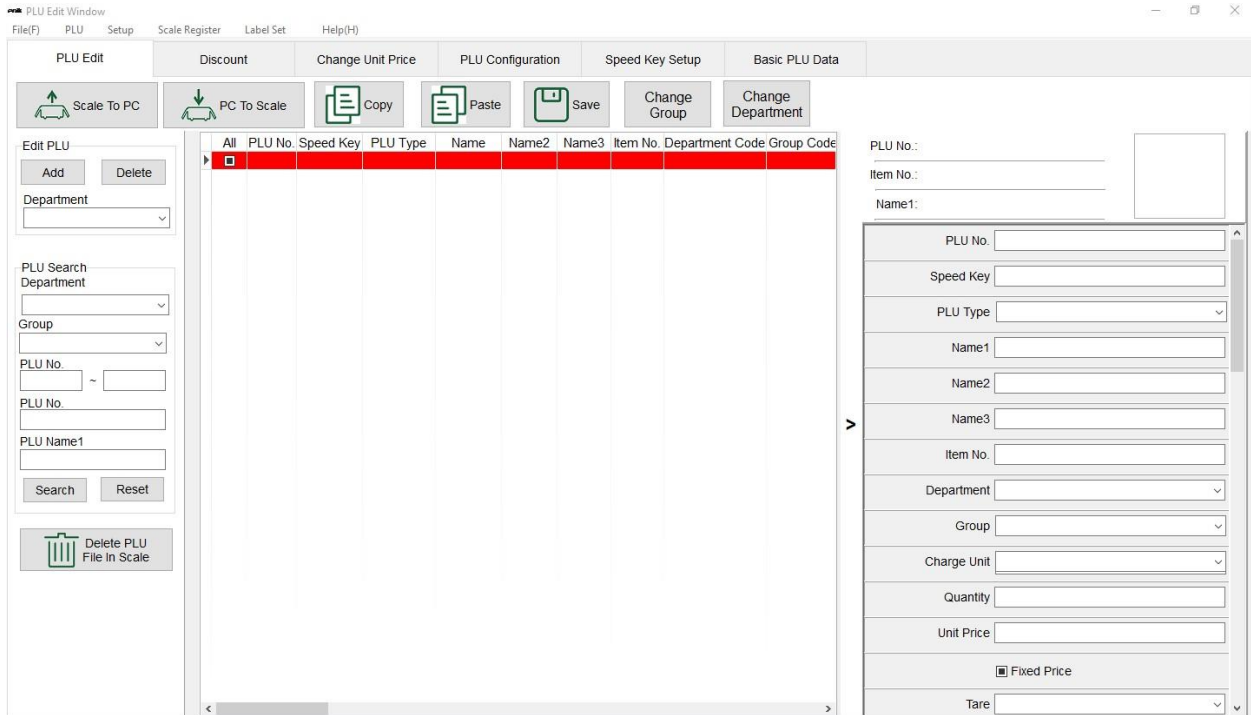
Click on the "Barcode" tab to select predefined barcode type for the PLU.



How to Create and Edit a PLU

Step 1: Click the "PLU Edit" tab and then "Add" to Create

This will automatically create a PLU record linked to a Department. Each PLU is a unique record, so as you add additional PLUs the table to the right will become populated with the sequence of records.



Step 2: Click on the PLU to enter information

The basic PLU settings can be populated with the specific information for each individual PLU. This is done on the popup window on the right-hand side of the screen. Some features are entered directly while others are available from a dropdown list.

PLU No.: **1**
Item No.: **A2019000012**
Name1: **Pakchoi**



PLU No.	1
Speed Key	1
PLU Type	0:By Weight
Name1	Pakchoi
Item No.	A2019000012
Department Code	1:D1
Group Code	2:g2
Charge Unit	0:/KG
Quantity	10
Unit Price	6
<input type="checkbox"/> Fixed Price	
Tare	1:TARE1

>

Step 3: Click the "PLU Edit" tab and then click on the PLU to edit

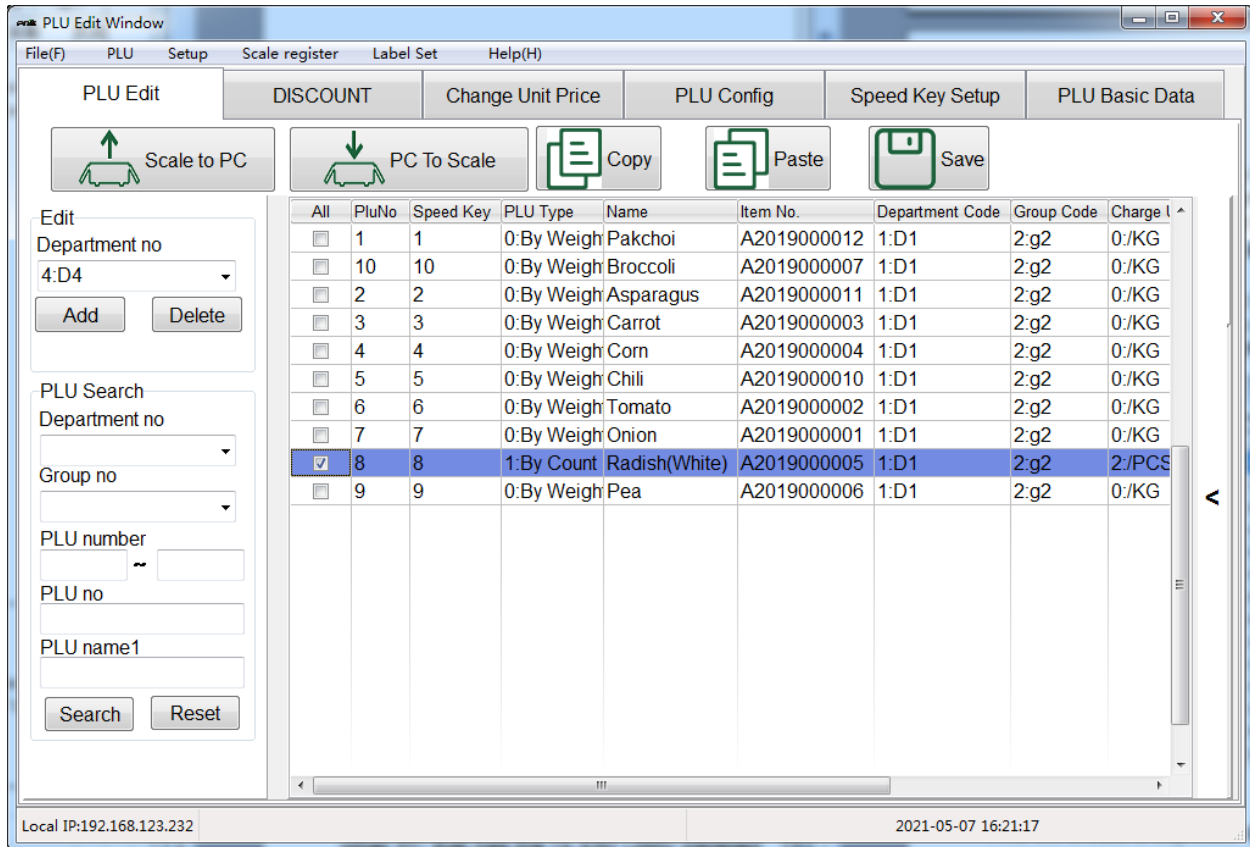
Once a PLU has already been created, you can edit any information by simply clicking on the PLU. The same screens and processes apply as in creating PLUs.

How to Clone a PLU

Many PLUs can share the same basic information, and so it is a lot faster to clone (or copy) a PLU than to create a new one from scratch every time.

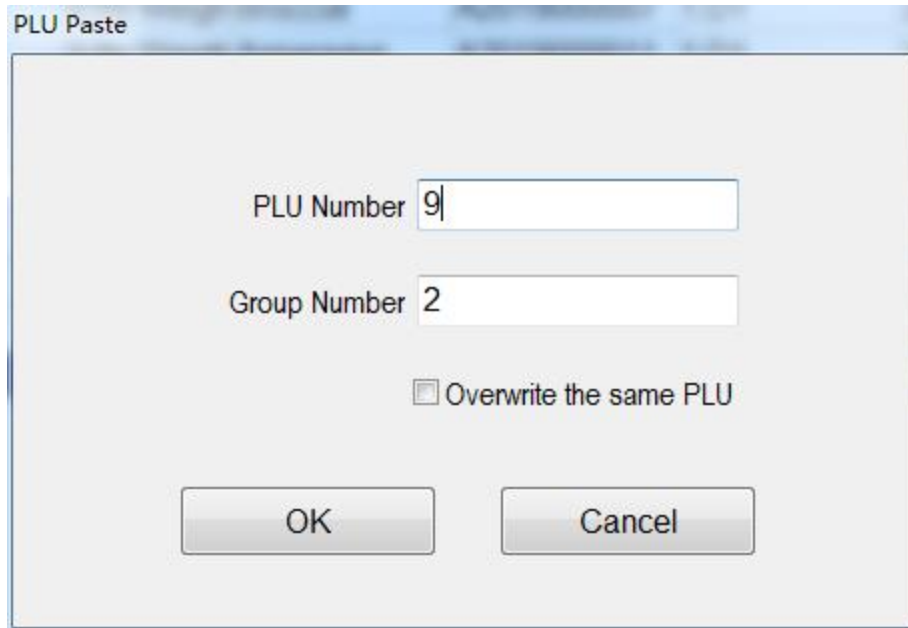
Step 1: Select the PLU that you want to Clone (copy)

From the "PLU Edit" tab, choose the PLU that already has most of the information that you need. Click "Copy"



Step 2: Create the new PLU

Once you have a new PLU, select it and click "Paste". The "PLU Paste" window will appear. Input the new PLU number into this window and click "OK". This will create a duplicate record of the selected PLU and will assign it to the new PLU.

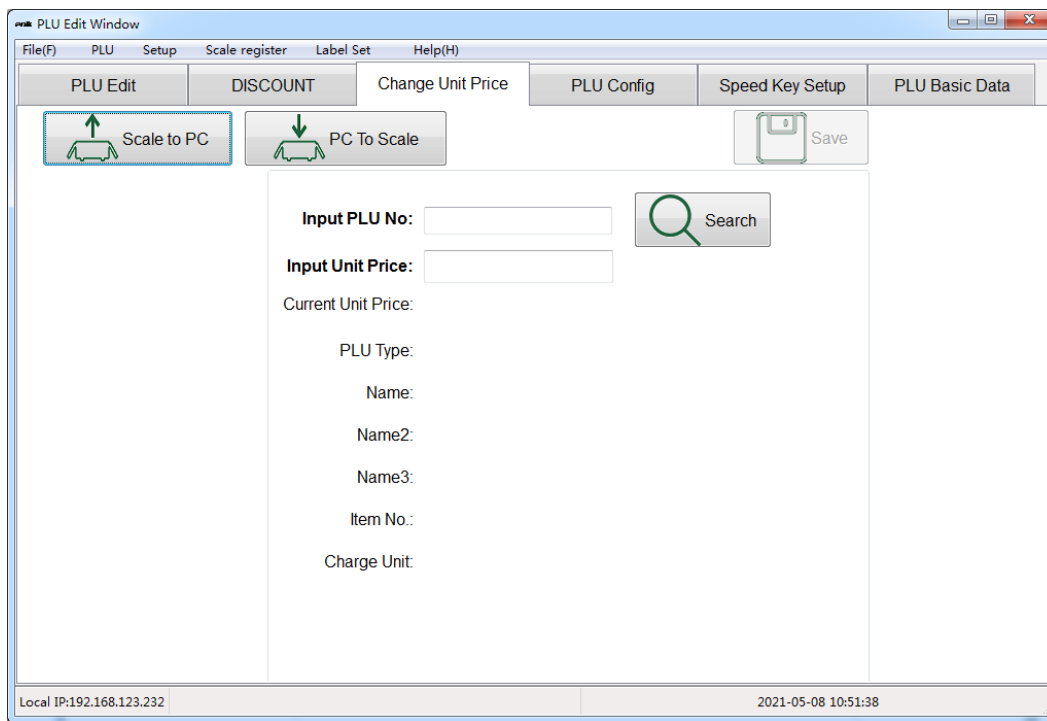


Step 3: Edit the PLU

If there is any information from the copied PLU that doesn't apply, simply click on the PLU and edit it directly.

How to Change the Unit Price

Step 1: Click on the "Change Unit Price" tab.



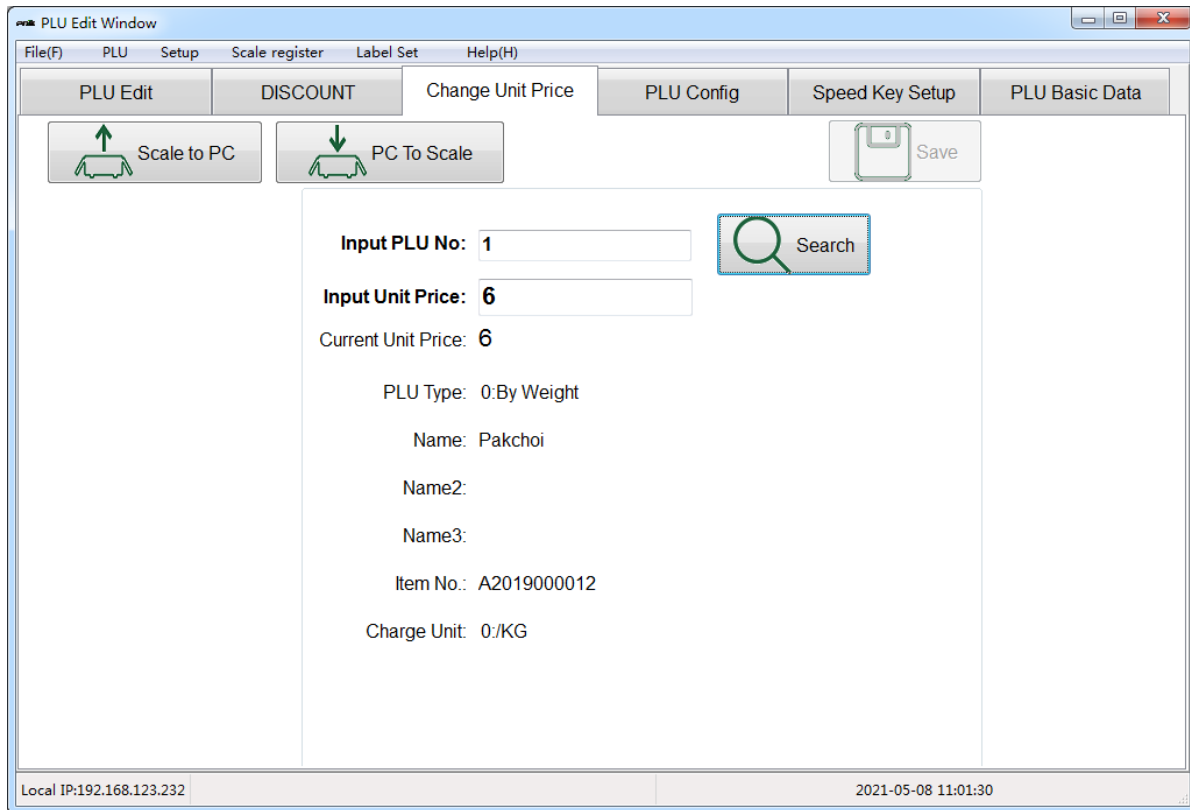
Step 2: Input the PLU number into the "Input PLU No.:" field.

The screenshot shows a software window titled "PLU Edit Window". The menu bar includes "File(F)", "PLU", "Setup", "Scale register", "Label Set", and "Help(H)". Below the menu bar are several tabs: "PLU Edit", "DISCOUNT", "Change Unit Price", "PLU Config", "Speed Key Setup", and "PLU Basic Data". The "PLU Edit" tab is active. At the top of the main area, there are three buttons: "Scale to PC" (with an upward arrow icon), "PC To Scale" (with a downward arrow icon), and "Save" (with a floppy disk icon). The main content area contains the following fields and labels:

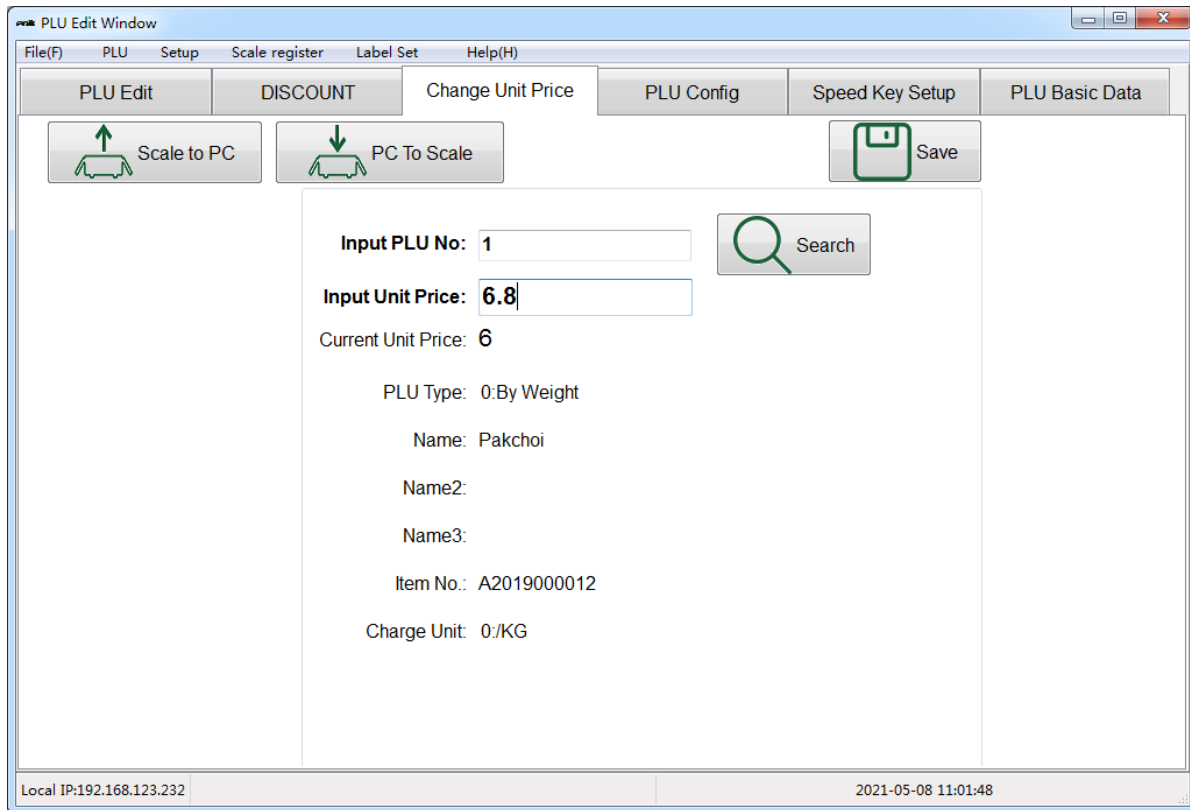
- Input PLU No.:** A text input field containing the number "1".
- Input Unit Price:** An empty text input field.
- Current Unit Price:** A label with no input field.
- PLU Type:** A label with no input field.
- Name:** A label with no input field.
- Name2:** A label with no input field.
- Name3:** A label with no input field.
- Item No.:** A label with no input field.
- Charge Unit:** A label with no input field.

To the right of the "Input PLU No." field is a "Search" button with a magnifying glass icon. At the bottom of the window, the status bar shows "Local IP:192.168.123.232" on the left and "2021-05-08 11:00:59" on the right.

Step 3: Click "Search" to return the current price.



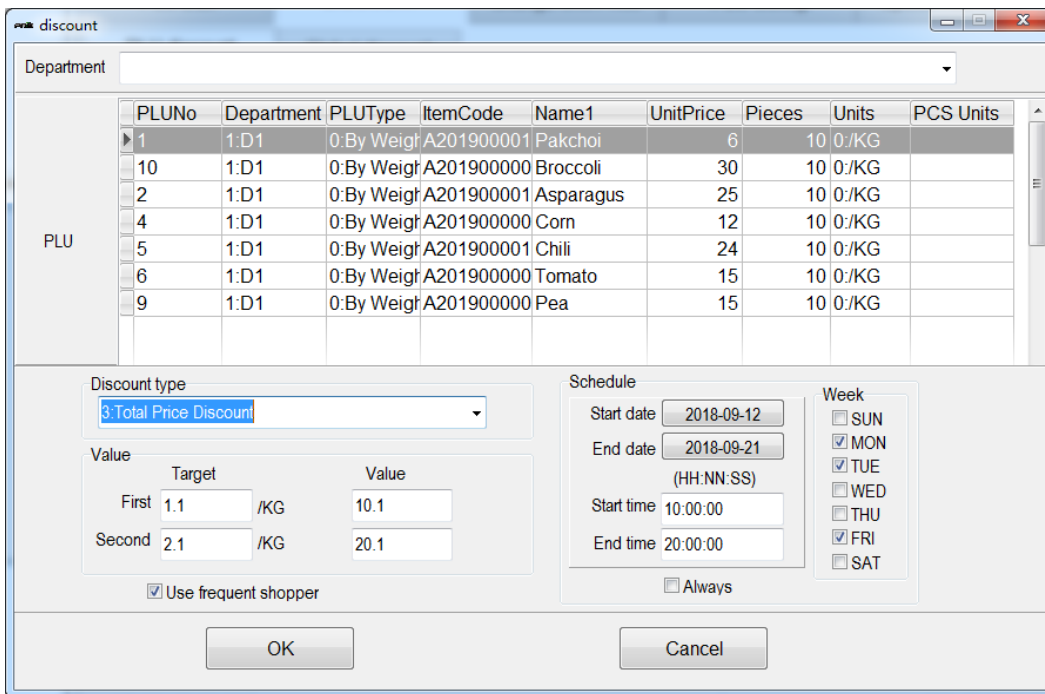
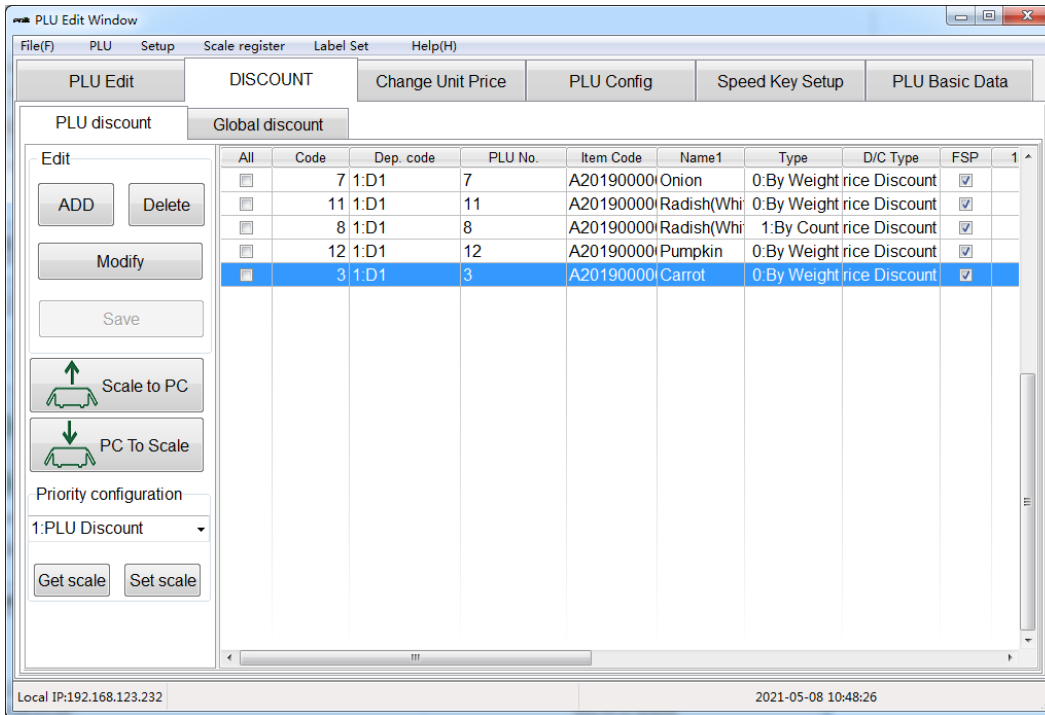
Step 4: Input the new price into the "Input Unit Price" field.



Step 5: press "Save" to complete the process.

How to add, modify and delete a PLU Discount

Click on the "DISCOUNT" tab and then on the "PLU discount" tab. Select the desired PLU. In the "Edit" section, click "ADD", "Delete", or "Modify" as required. You can then format it as desired in the popup windows.



discount

Department

PLUNo	Department	PLUType	ItemCode	Name1	UnitPrice	Pieces	Units	PCS Units
1	1:D1	0:By Weigh	A201900001	Pakchoi	6	10	0:/KG	
10	1:D1	0:By Weigh	A201900000	Broccoli	30	10	0:/KG	
2	1:D1	0:By Weigh	A201900001	Asparagus	25	10	0:/KG	
3	1:D1	0:By Weigh	A201900000	Carrot	7	10	0:/KG	
4	1:D1	0:By Weigh	A201900000	Corn	12	10	0:/KG	
5	1:D1	0:By Weigh	A201900001	Chili	24	10	0:/KG	
6	1:D1	0:By Weigh	A201900000	Tomato	15	10	0:/KG	
9	1:D1	0:By Weigh	A201900000	Pea	15	10	0:/KG	

PLU

Discount type: 3.Total Price Discount

Value

	Target	Value
First	1.1 /KG	10.1
Second	2.1 /KG	20.1

Use frequent shopper

Schedule

Start date: 2018-09-12
End date: 2018-09-21
(HH:NN:SS)

Start time: 10:00:00
End time: 20:00:00

Week

SUN
 MON
 TUE
 WED
 THU
 FRI
 SAT

Always

OK Cancel

PLU Edit Window

File(F) PLU Setup Scale register Label Set Help(H)

PLU Edit DISCOUNT Change Unit Price PLU Config Speed Key Setup PLU Basic Data

PLU discount Global discount

Edit

ADD Delete 1

Modify

Save

Scale to F

PC To Sc

Priority configurati

1:PLU Discount

Get scale Set scale

All	Code	Dep. code	PLU No.	Item Code	Name1	Type	D/C Type	FSP	1
<input type="checkbox"/>	7	1:D1	7	A201900000	Onion	0:By Weight	rice Discount	<input checked="" type="checkbox"/>	
<input type="checkbox"/>	11	1:D1	11	A201900000	Radish(Whi	0:By Weight	rice Discount	<input checked="" type="checkbox"/>	
<input type="checkbox"/>	8	1:D1	8	A201900000	Radish(Whi	1:By Count	rice Discount	<input checked="" type="checkbox"/>	
<input type="checkbox"/>	12	1:D1	12	A201900000	Pumpkin	0:By Weight	rice Discount	<input checked="" type="checkbox"/>	
<input type="checkbox"/>	2	1:D1	2	A201900000	Carrot	0:By Weight	rice Discount	<input checked="" type="checkbox"/>	

Warning

Delete current Data?

Cancel OK 2

Local IP:192.168.123.232 2021-05-08 10:49:14

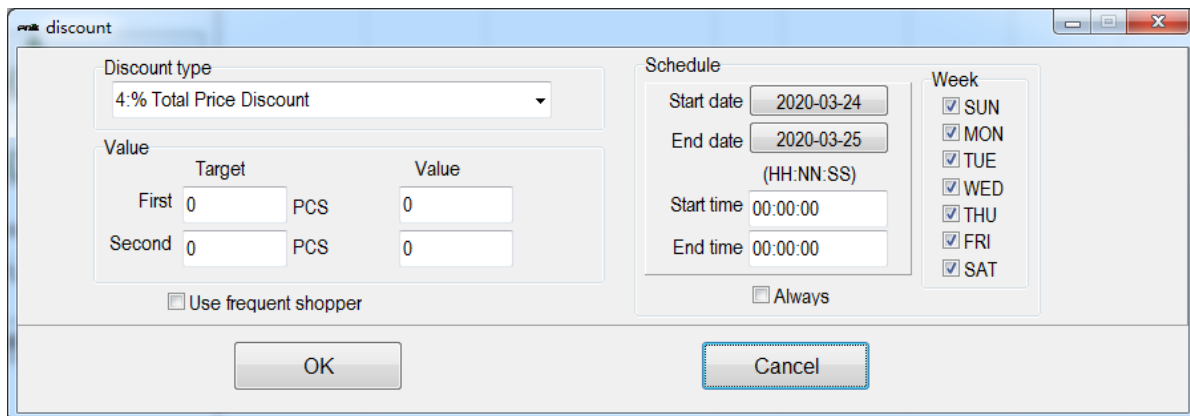
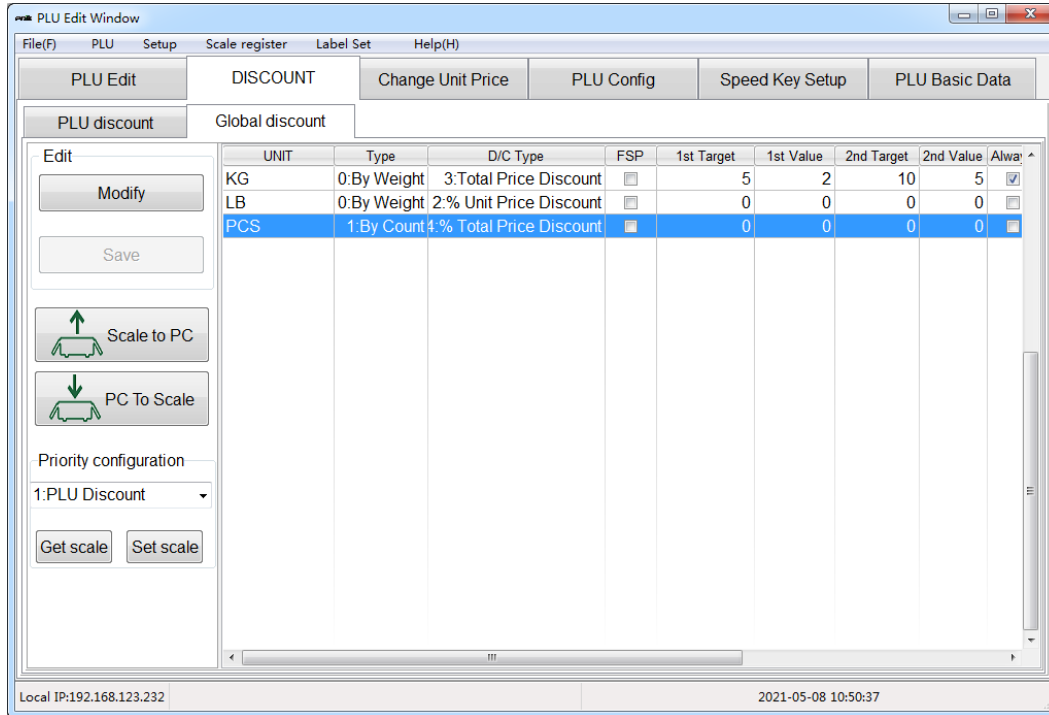
0: No discount

1: PLU Discount

2: Global Discount

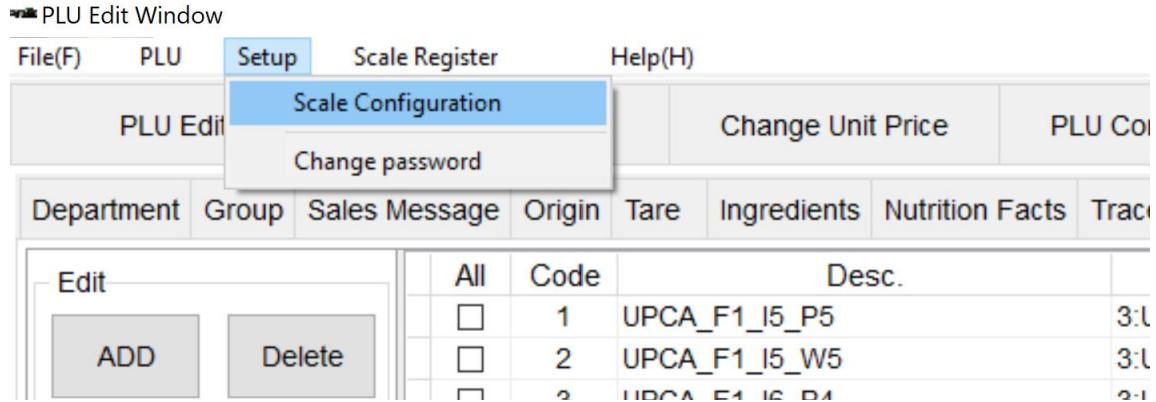
How to set a Global Discount

Click on the "DISCOUNT" tab and then on the "Global discount" tab. In the "Edit" section, click "Modify". You can then format it as desired in the popup windows.



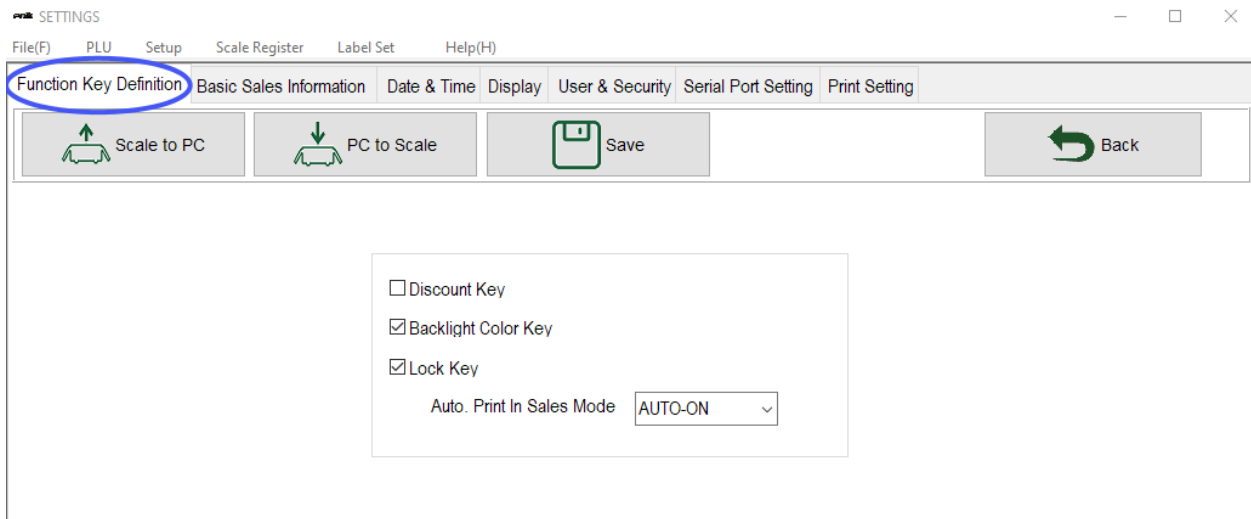
How to Configure the Scale

From the taskbar, click "setup" and then select "Scale Config" to access the settings tabs. The first tab is the "Function Key define" setting.



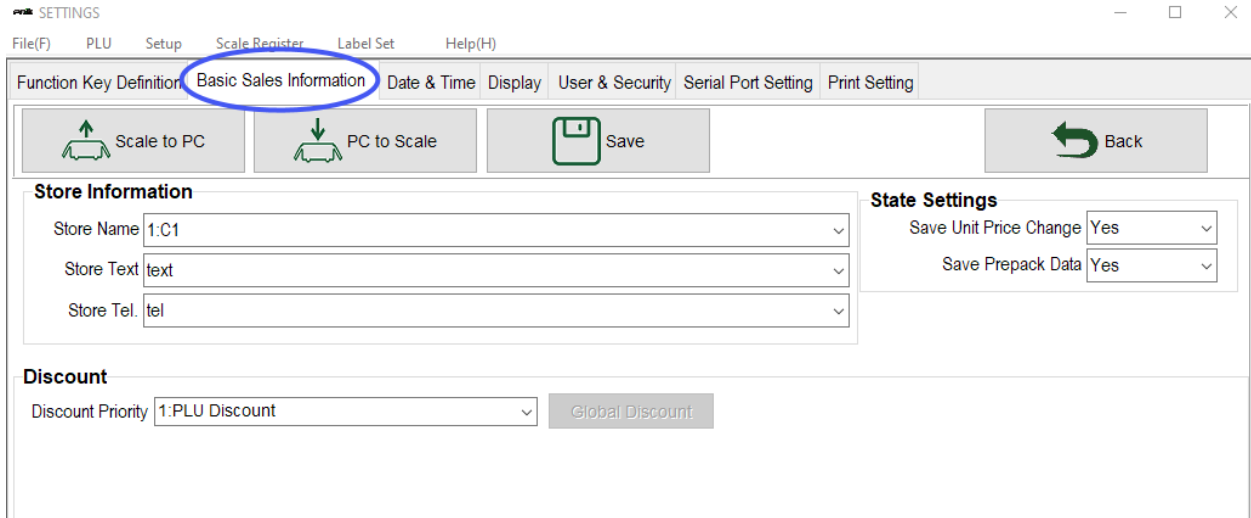
Step 1: Function Key Definition tab

Click on the "Function Key definition" tab to adjust your settings.



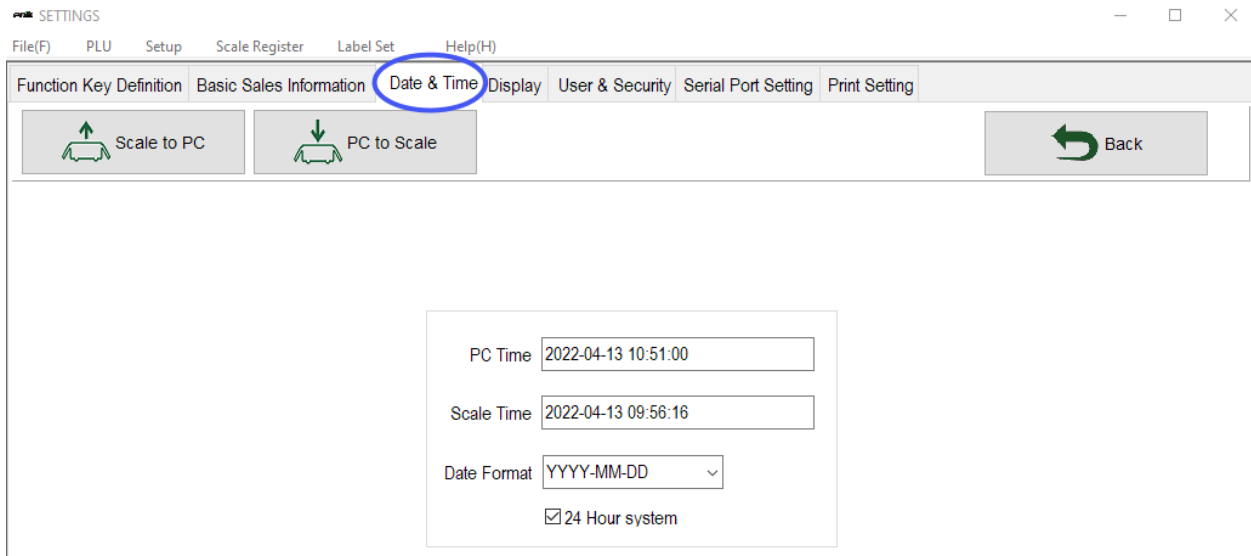
Step 2: Scale Basic Information tab

Click on the "Scale Basic Information" tab to set up the basic information for your store or business.



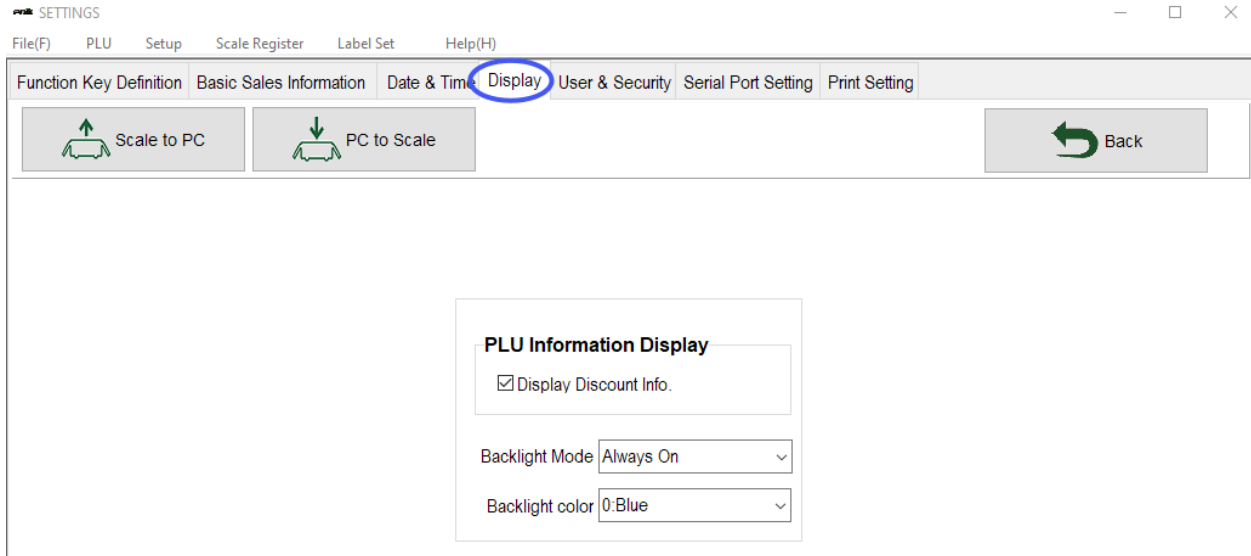
Step 3: Date & Time tab

Click in the "Date & Time" tab select the date format and time settings for the PC and scale.



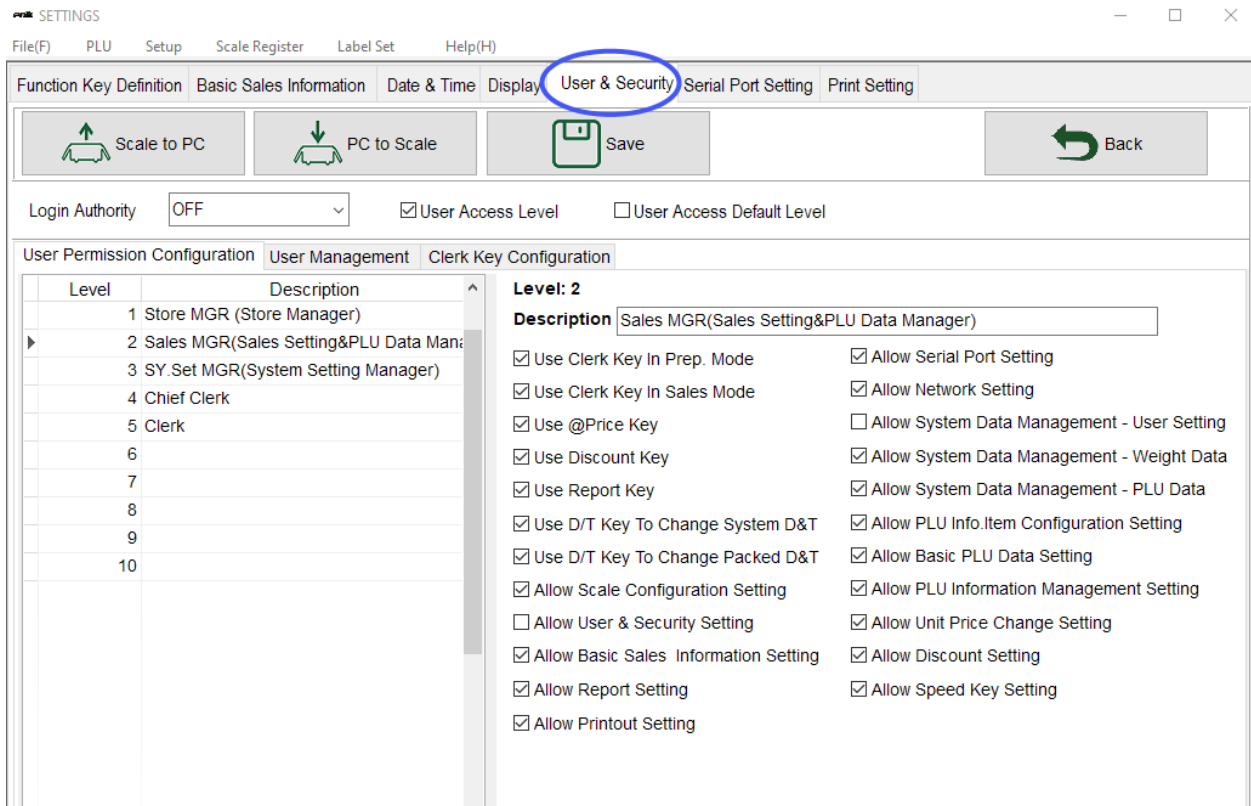
Step 4: Display tab

Click on the "Display" tab to customize your display. You can choose from a blue, green or amber backlight.



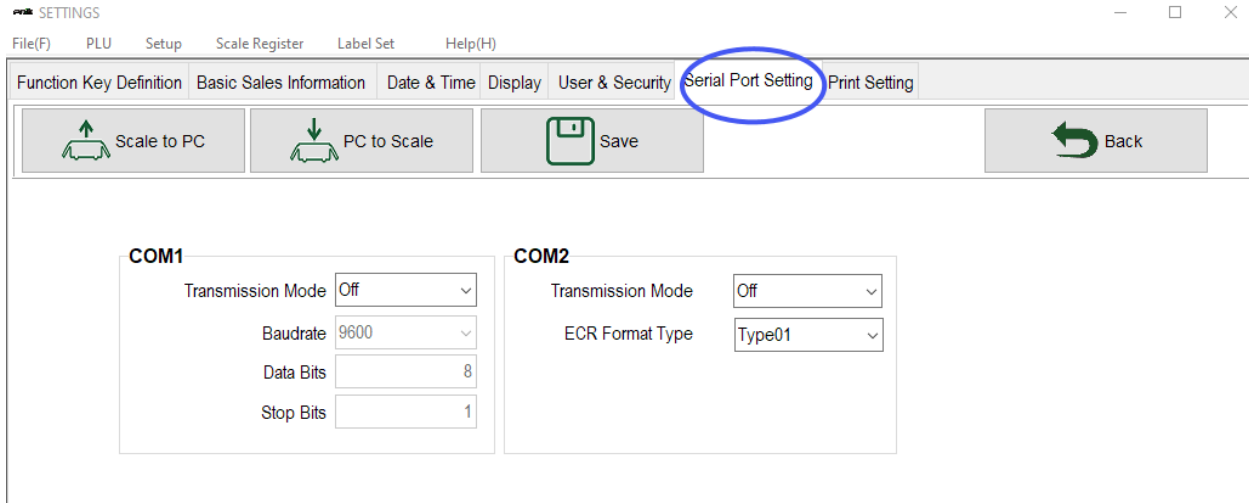
Step 5: User Security Config tab

Click on the "User Security Config" tab to configure user permissions, to manage users, and to configure the clerks.



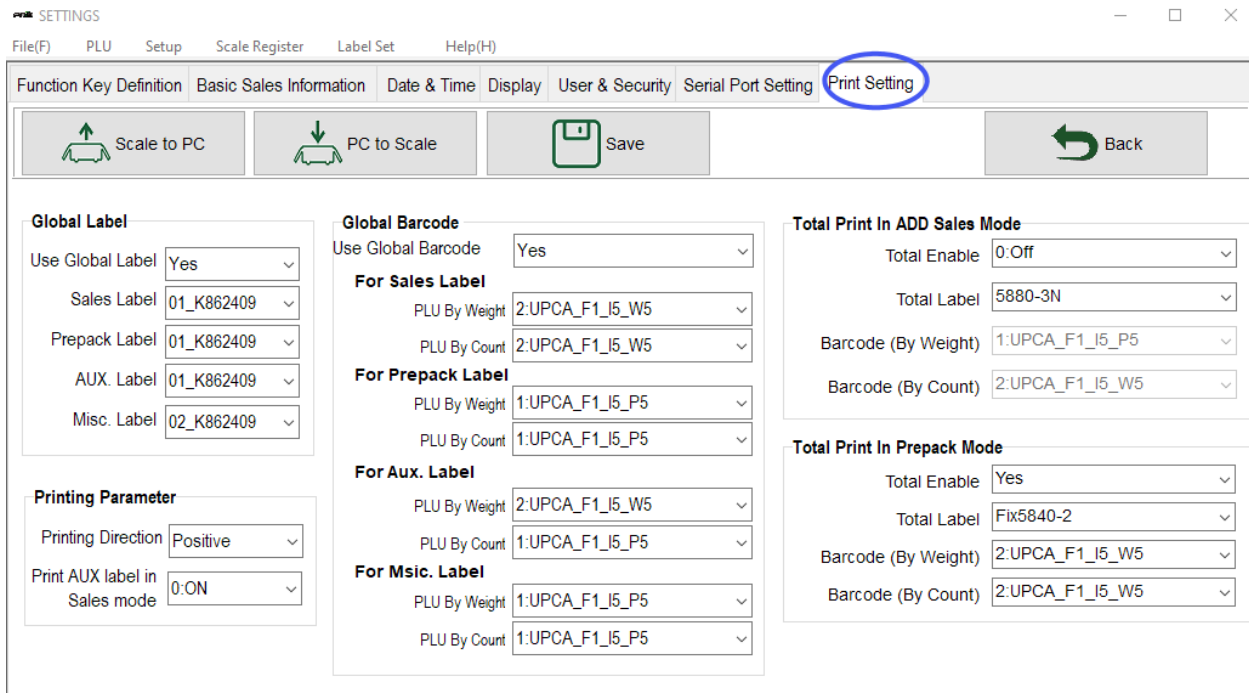
Step 6: Serial Port Setting tab

Click on the "Serial Port Setting" tab to view the serial ports. Note that these are predefined settings, so do not change them.



Step 7: Print Setting tab

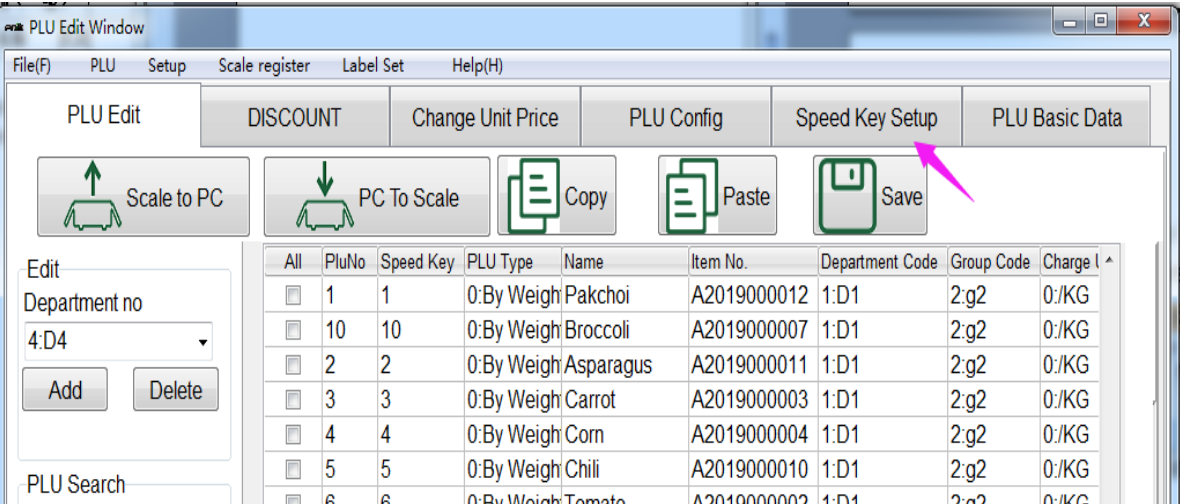
Click on the "Print Setting" tab to configure how the labels will print. Note that these are factory settings that can be changed as needed.



How to Program Speed Keys

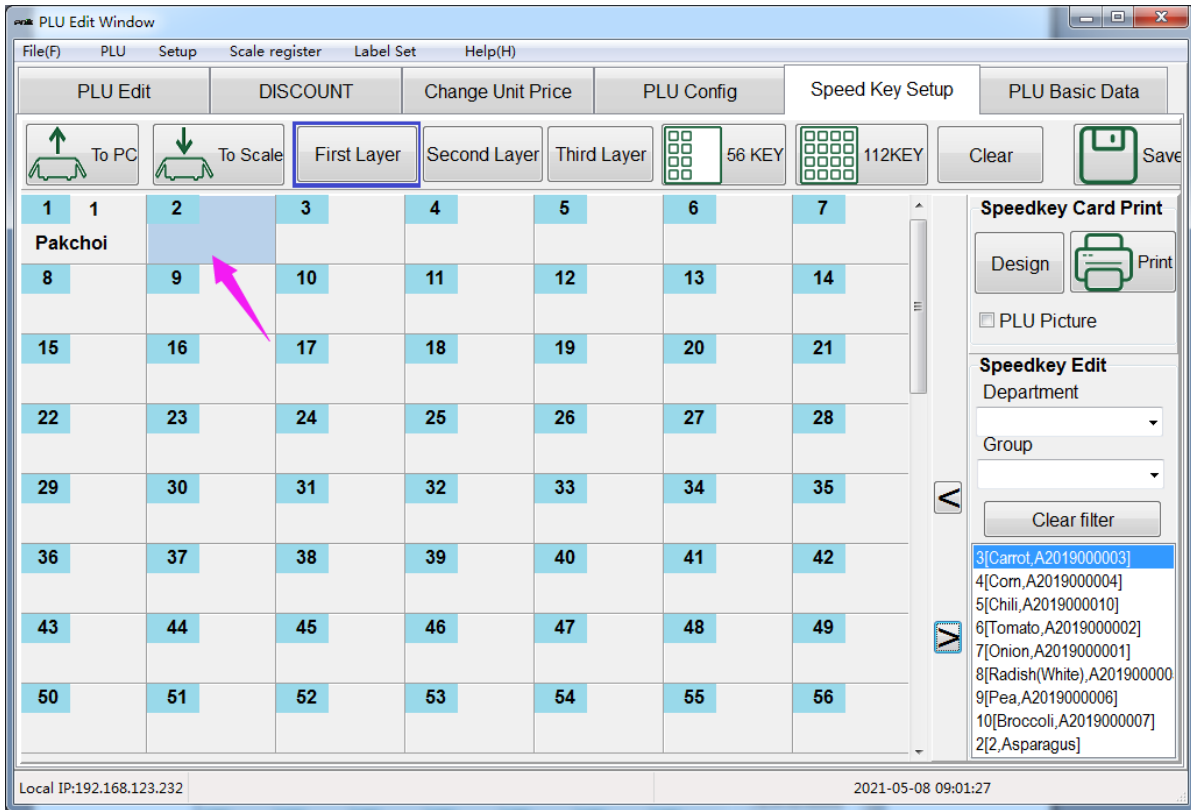
How to Assign a PLU to a Speed Key

For frequently used PLUs., it is convenient to have them assigned to Speed Keys. To begin, click on the "Speed Key Setup" tab which will open the graphic display of the PLU keys.

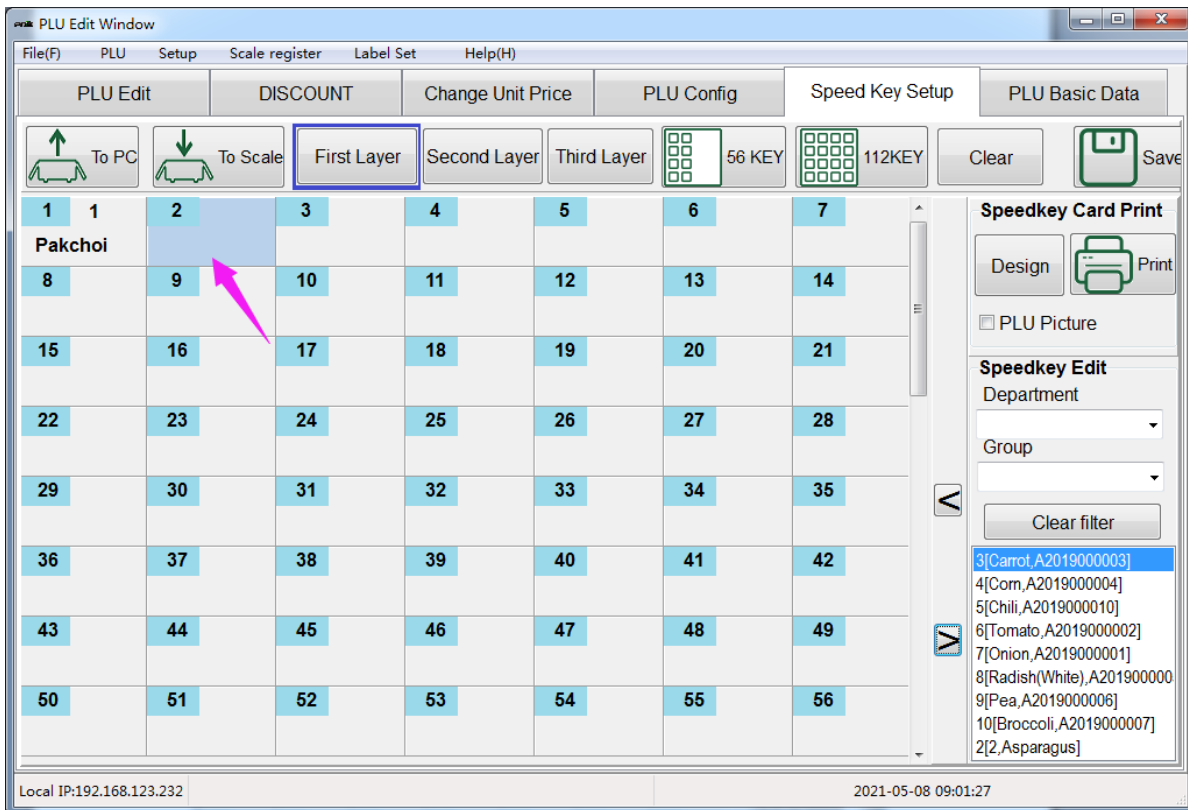
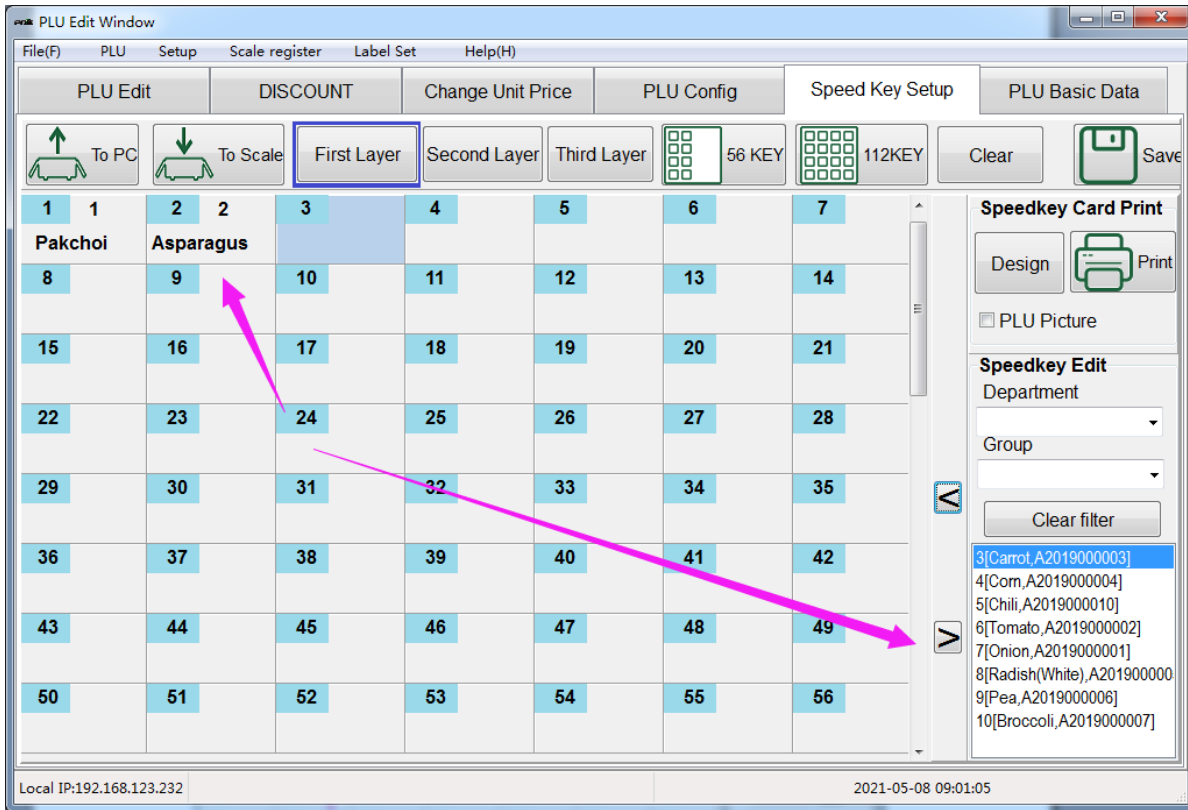


From this screen, you can begin assigning PLUs on up to 3 layers per key, on either a 56 Key or 112 Key display.

To add or remove PLUs to a speed key, click on the key you want to use.

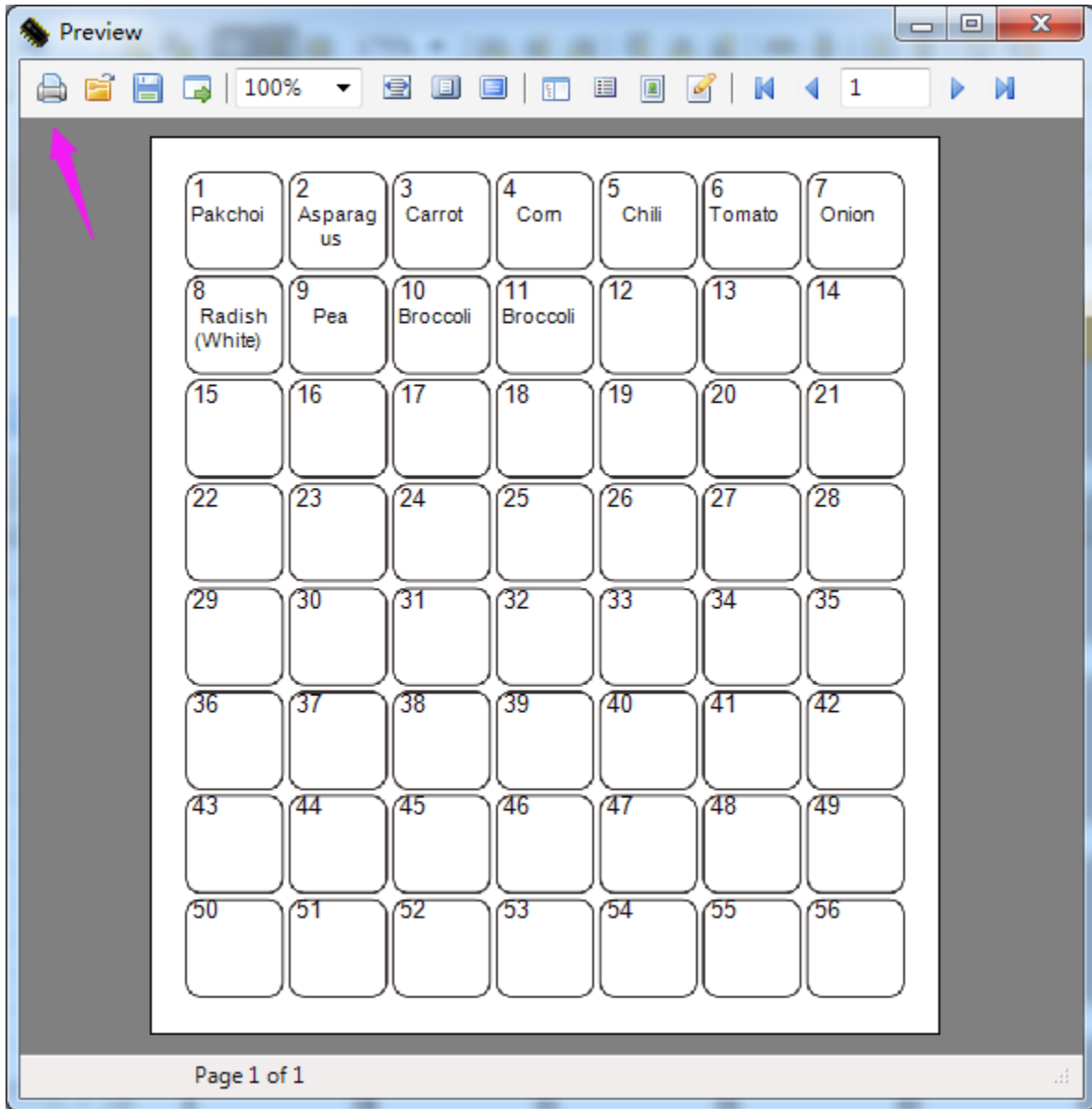


Once the key is selected, use the arrows on the bottom right of the screen to either add or remove PLUs from the list of available items. In this example, Asparagus was removed from Speed Key 2 of the First Layer of a 56 Key display.



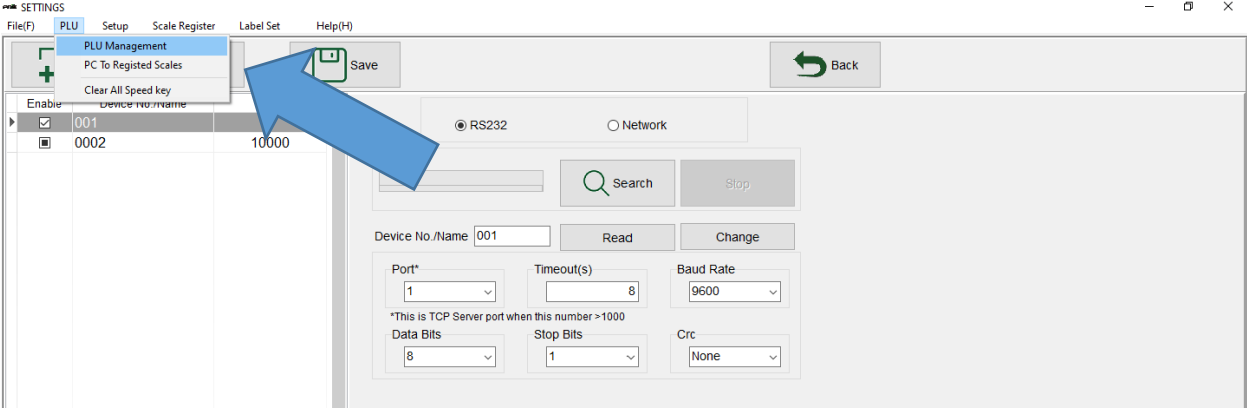
How to Print your Speed Key overlay

Once all of your Speed Keys are assigned, you can print them on an overlay to apply on your Scale. On the right-hand side of the window under Speed Key Card Print, click the "Design" button to view and edit your Speed Key layout. When it is ready, click "Print".

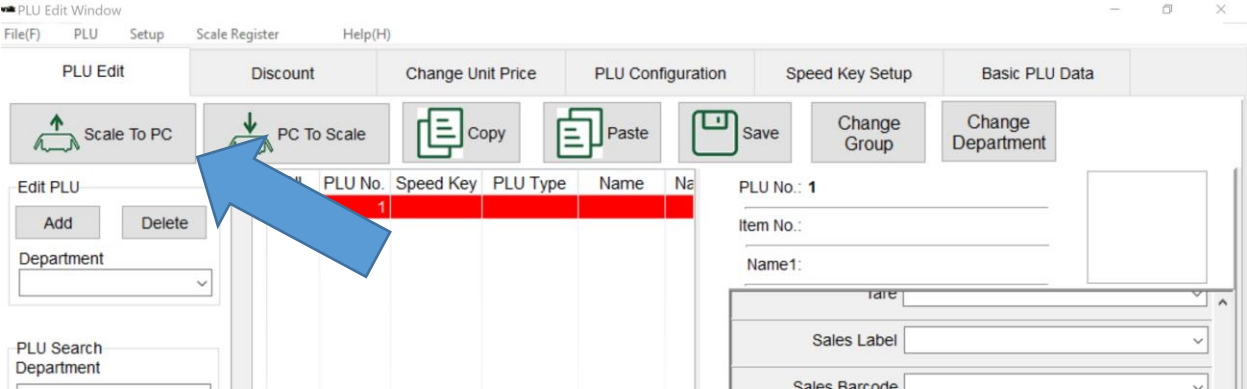


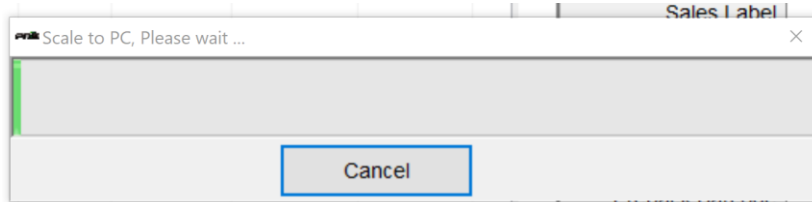
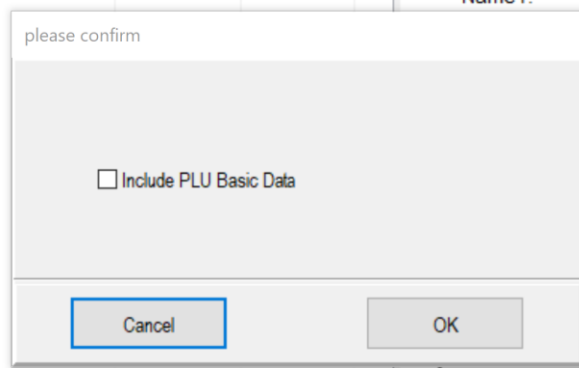
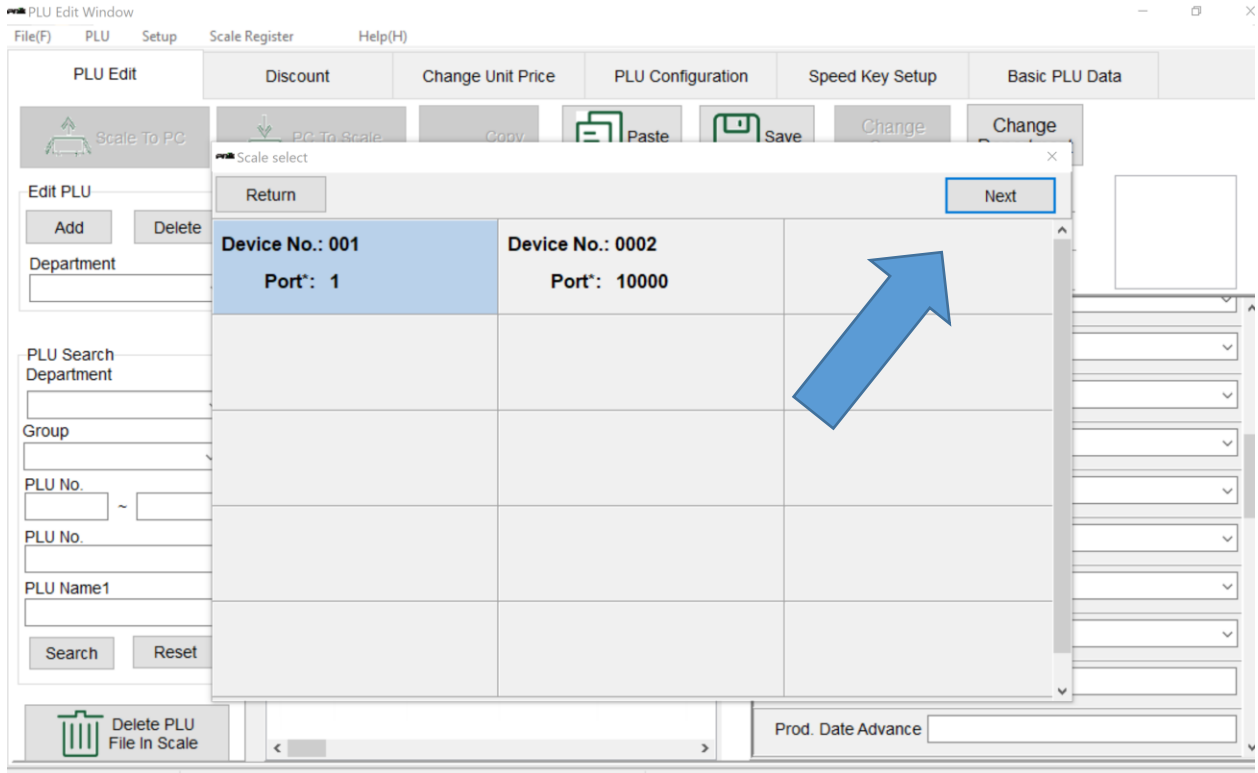
How to Upload and Download to the Scale

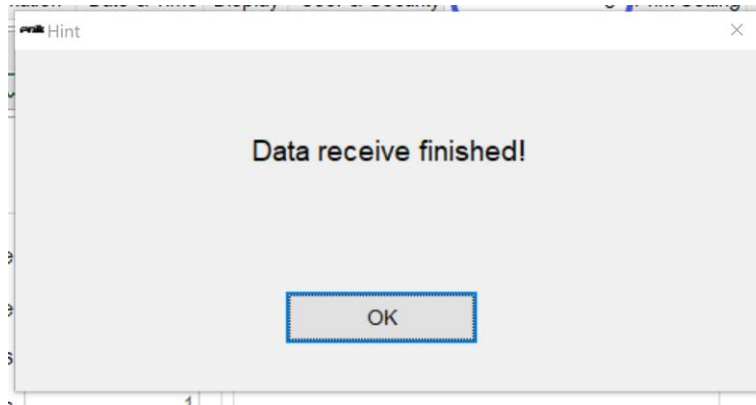
To access the PLU Edit tab, start by selecting PLU and then PLU Management. You can alternatively work from the Setup tab through Scale Configuration



To upload from the scale to the PC, click the "Scale to PC" icon and follow the prompts in the pop-up windows.







To download from the scale to the PC, click the "PC to Scale" icon and follow the prompts in the pop-up windows.

