

# Photo Album for Yarmouth, MA Job 28904 November 20, 2015

This week the body was merged with the chassis at the Pierce rescue facility where your apparatus will remain until complete. Wire harnessing continued to be installed along with generator access. In the next report work should continue on installation of body components.

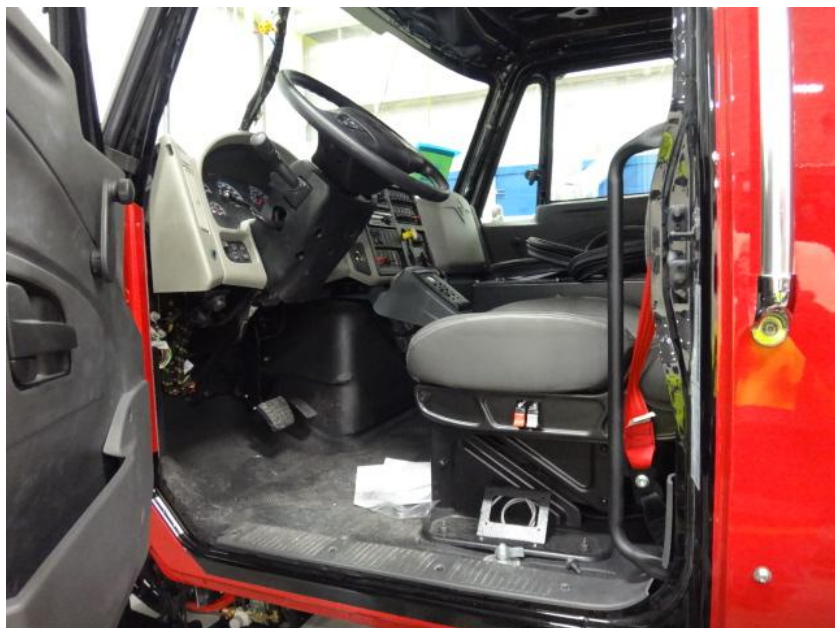
**Due to the Pierce Plant Holiday shut down,  
your next report is scheduled for December 4, 2015.**

<b>ITEM NO.</b>	<b>28904</b>
TRUCK NO.	18965052
INTERNAL ORDER NO.	18966775
AERIAL NO.	N/A
TORQUE BOX NO.	N/A
V.I.N. NO.	N/A
CHASSIS BY:	<input checked="" type="checkbox"/> PIERCE <input type="checkbox"/> CUSTOMER
DEALER:	MINUTEMAN
CUSTOMER:	YARMOUTH
STATE:	MA

DSC04313



DSC04314



DSC04315



DSC04316





DSC04317



DSC04318



DSC04319



DSC04320





DSC04321



DSC04322



DSC04323



DSC04324





DSC04325



DSC04326



DSC04327



DSC04328





DSC04329



DSC04330



DSC04331



DSC04332



DSC04333



DSC04334