

# Photo Album for Tewksbury, MA Job 30270 September 30, 2016

This week the cab finished on the cab line and has been merged with the chassis along with the pump plumbing module. The aerial pedestal was also merged with the chassis. The body finished in paint and had harnessing and trim added. Next week the body and water tank are scheduled to be merged with the chassis on the main assembly line.



DSC00577



DSC00578



DSC00579



DSC00580





DSC00581



DSC00582



DSC00583



DSC00584



DSC00585



DSC00586



DSC00587



DSC00588





DSC00589



DSC00590

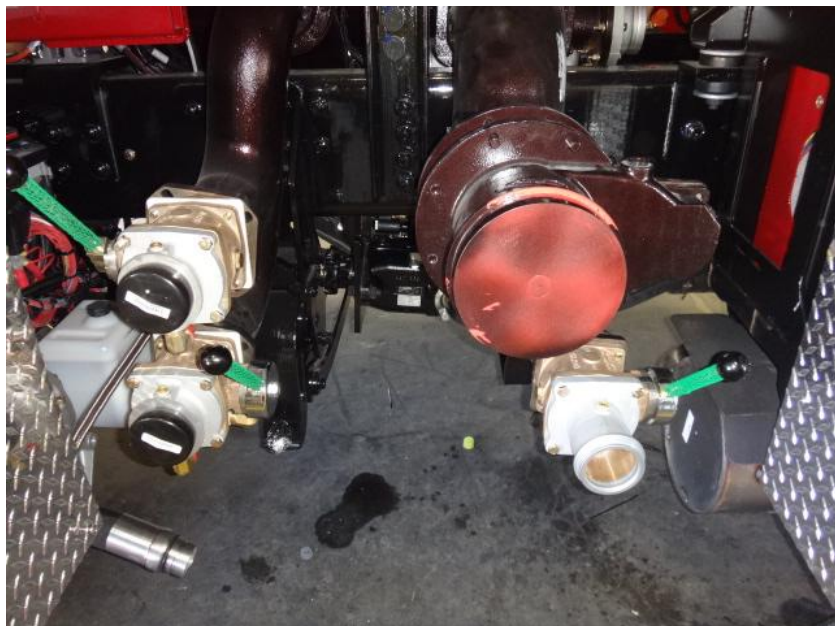


DSC00591



DSC00592

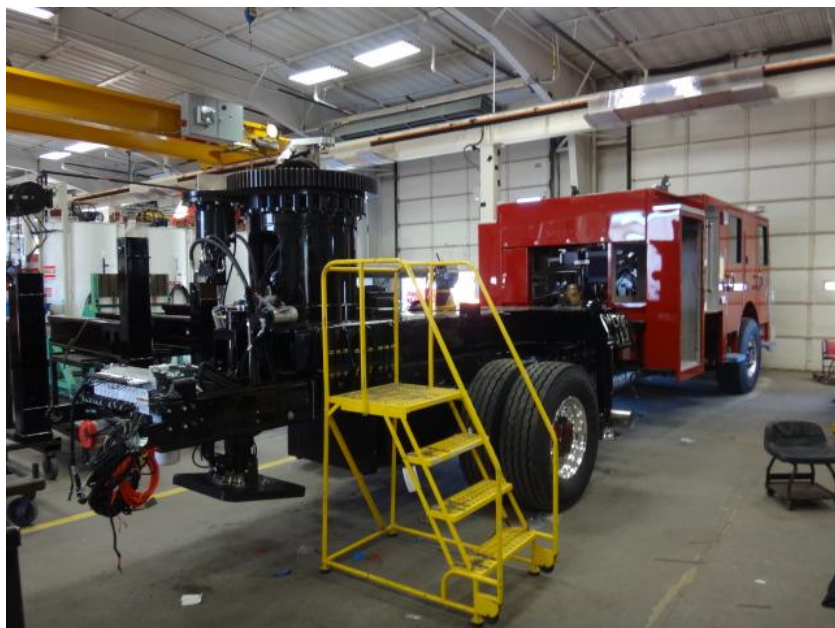




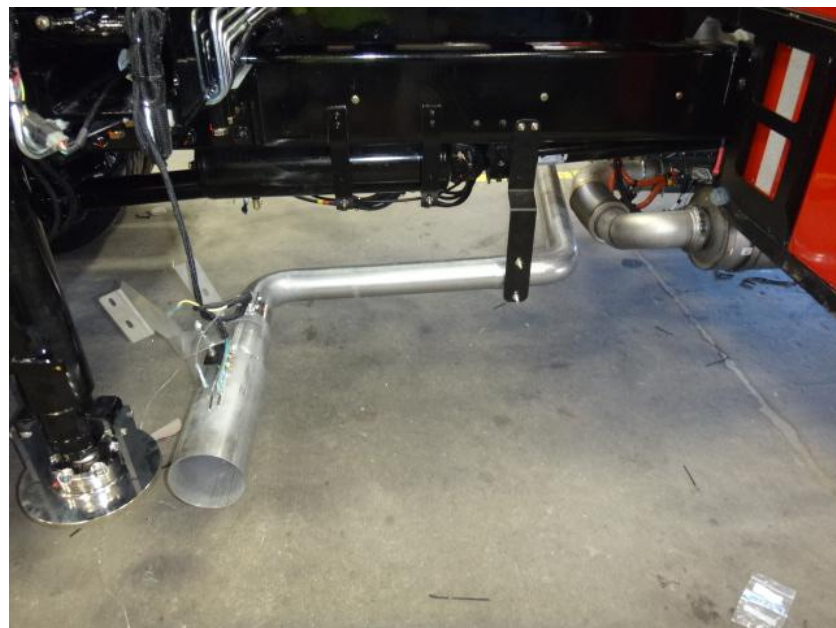
DSC00593



DSC00594



DSC00595



DSC00596





DSC00597



DSC00598



DSC00599



DSC00600





DSC00601



DSC00602



DSC00603



DSC00604





DSC00605



DSC00606



DSC00607



DSC00200



DSC00201



DSC00202



DSC00203



DSC00204