



Photo Album for Salem, NH Job 30437 March 10, 2017

This week the cab finished in paint while the chassis began assembly. Initial plumbing of the pump house was completed while body fabrication began. Next week the cab is scheduled to begin on the cab line where cab related content is added. The chassis should continue assembly. The pump house should be painted and may have trim added. The body may begin the paint process.



DSC04240



DSC04241



DSC04242



DSC04243



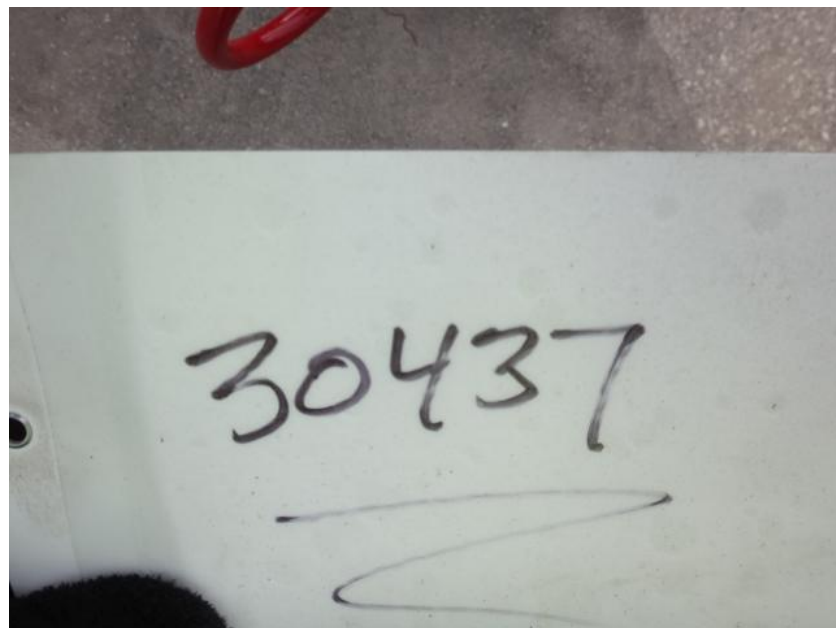
DSC04244



DSC04245



DSC04246



DSC00281



DSC00282



DSC00283



DSC00284



DSC00285



DSC00286



DSC00287



DSC00288



DSC00289



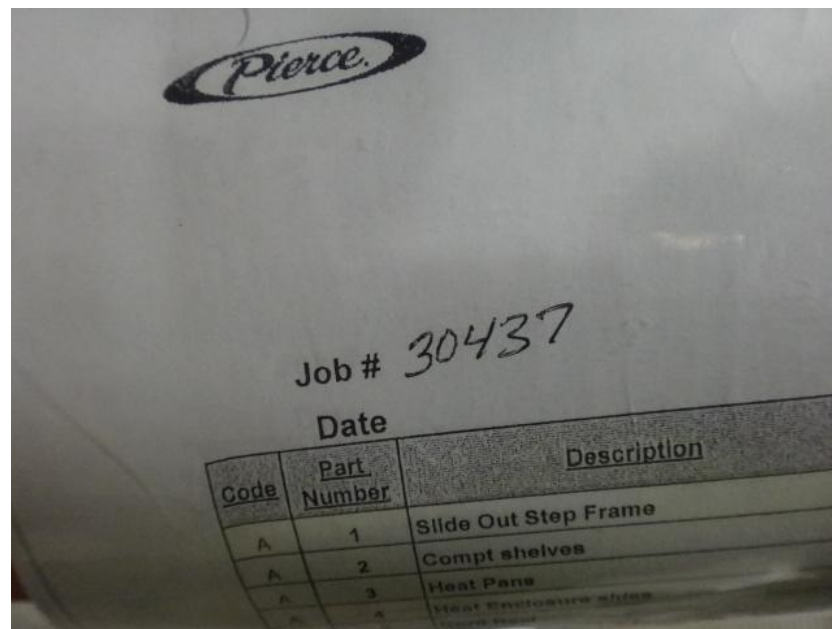
DSC00290



DSC00291



DSC00292



DSC07030



DSC07031



DSC07032



DSC07033



DSC07034



DSC07054



DSC07055



DSC07056



DSC07057



DSC07058