

The background is a collage of three images related to firefighting. The top left shows a close-up of a firefighter's helmet and face mask. The top right shows a red fire truck with 'FIRE-RESCUE' written on its side. The bottom right shows two firefighters in full gear standing next to a large fire. The text is overlaid on the top half of the collage.

Photo Album for Meredith, NH Job 30070 July 29, 2016

This week the cab began the paint process and was nearing completion in paint. The pump house structure was fabricated. A body side panel began fabrication. Next week the cab is scheduled to begin on the cab line where cab related content is added while the chassis may begin assembly. The pump should be installed in the pump house. The body side panels should be joined in fabrication.



DSC00305



DSC00306



DSC00307



DSC00308



DSC00309



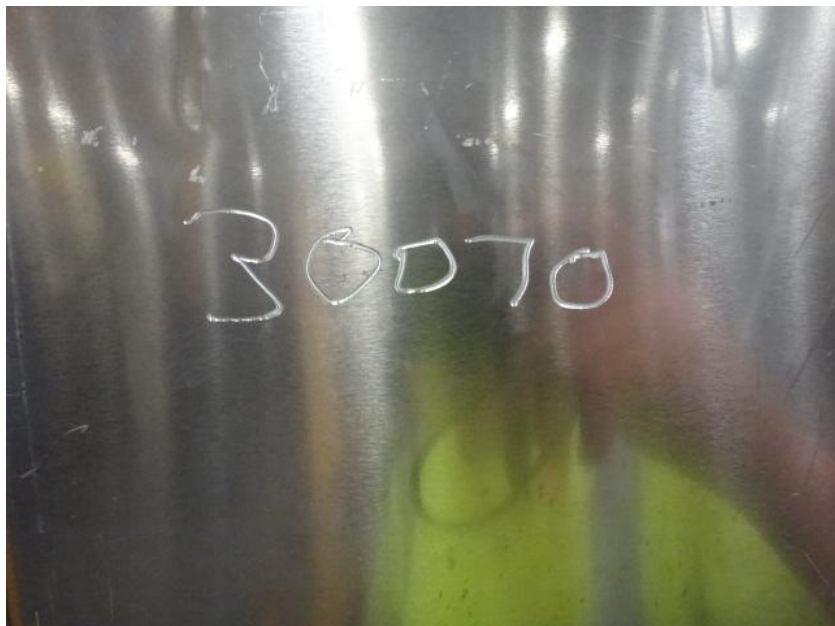
DSC07123



DSC07124



DSC07125



DSC07067



DSC07068



DSC07069



DSC07070