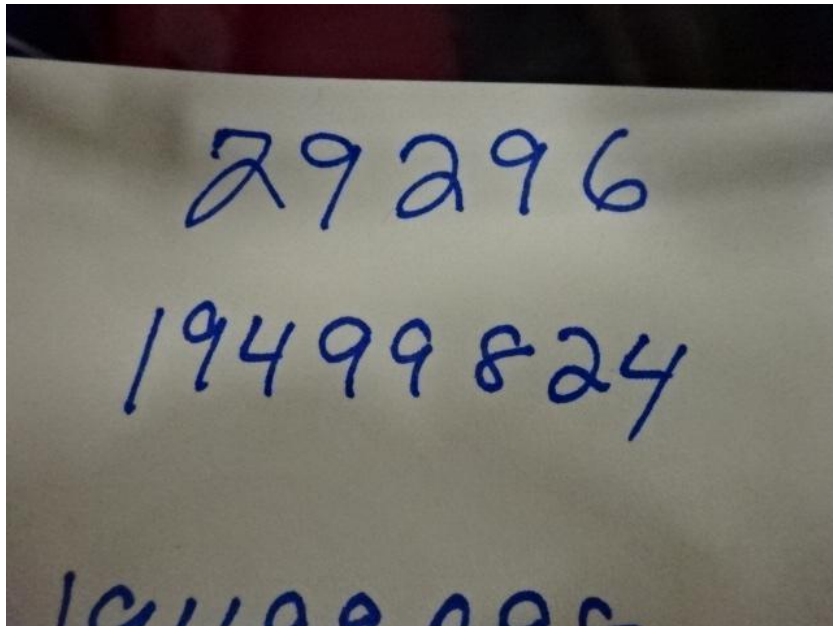


Photo Album for Henniker, NH Job 29296 February 12, 2016

This week the cab began on the cab line where cab related content is added. The pump was installed in the pump house. The body was fabricated. Next week the cab should be nearing completion in assembly while the chassis may begin assembly. The pump house and body may begin the paint process.



DSC07646



DSC07647



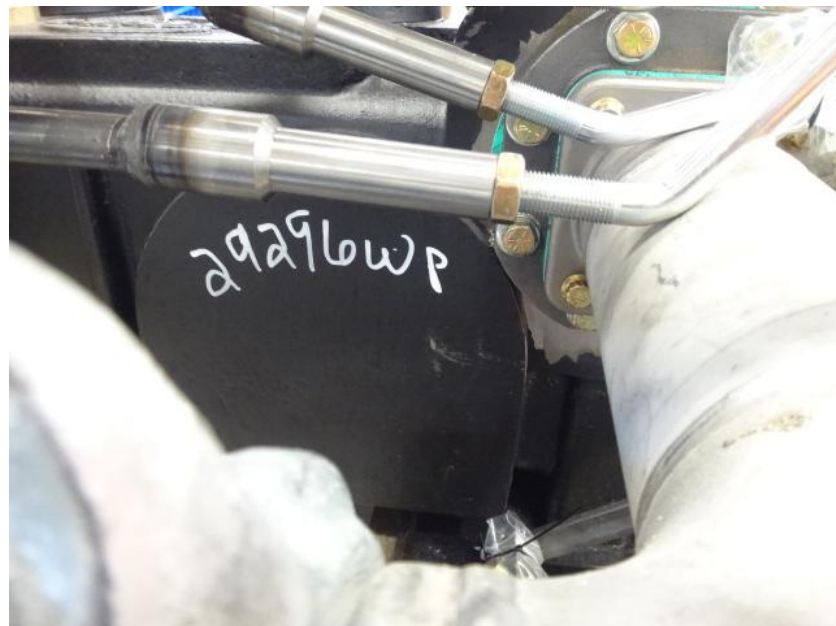
DSC07648



DSC07649



DSC07650



DSC04179



DSC04180



DSC04181



DSC04182



DSC04183



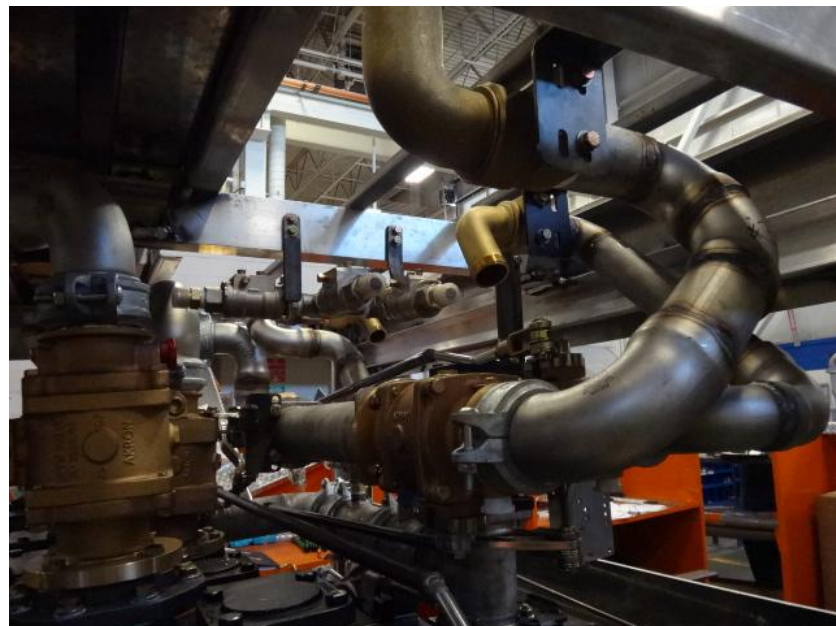
DSC04184



DSC04185



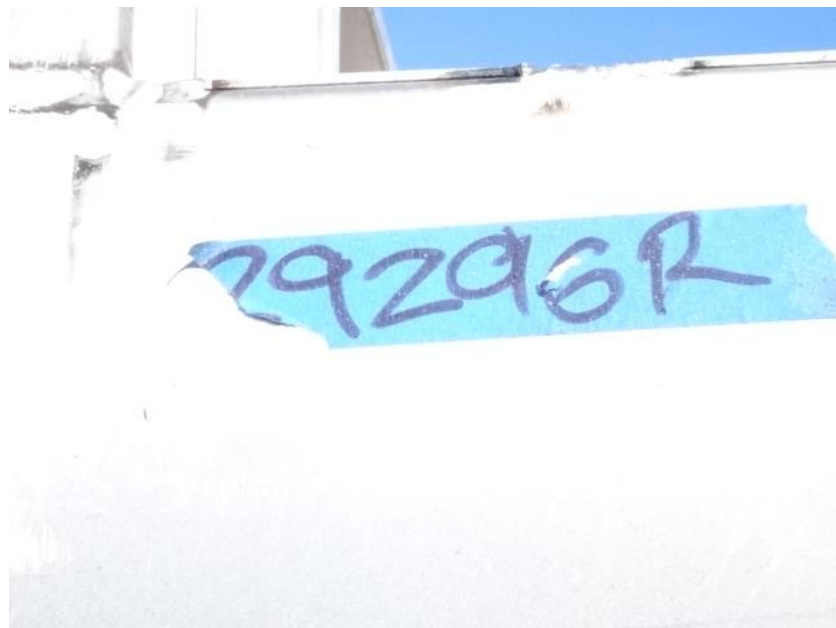
DSC04186



DSC04187



DSC04188



DSC04125



DSC04126



DSC04127



DSC04128



DSC04129



DSC04130